



**Reclamation Activities Quarterly Report
(3rd Quarter 2005)
(PER Water License NWBNAN0208)**

Submitted to:
The Nunavut Water Board

TABLE OF CONTENTS

1.0 INTRODUCTION

2.0 REMEDIATION WORK

2.1 Earthworks

- 2.1.1 West Twin Disposal Area
- 2.1.2 Area 14
- 2.1.3 East Open Pit
- 2.1.4 K-Baseline
- 2.1.5 Oceanview
- 2.1.6 Land Fill
- 2.1.7 STOL Port
- 2.1.8 West Open Pit
- 2.1.9 Carpenter Shop
- 2.1.10 Mine Portals
- 2.1.11 Quarries and Borrow Areas
- 2.1.12 Upper Dump Pond
- 2.1.13 Lower Dump Pond

2.2 Building Demolition

- 2.2.1 Mill
- 2.2.2 DMS Plant
- 2.2.3 Town Site Residences

2.3 Waste disposal

- 2.3.1 Waste Disposal Summary

3.0 EFFLUENT MONITORING

3.1 West Twin Decant

- 3.1.1 Daily results
- 3.1.2 Acute Lethality
- 3.1.3 Daphnia Magna toxicity
- 3.1.4 Sub lethal Toxicity
- 3.1.5 Effluent Characterization
- 3.1.6 Water Quality Monitoring

4.0 PROJECT COSTS

5.0 APPENDICES:

5.1 Photos

1.0 INTRODUCTION

The Nanisivik Mine is located on northern Baffin Island in the Nunavut Territory. It is an underground zinc-lead mine owned by CanZinco Ltd. and was in continuous operation from 1976 to 2002 when it ceased production permanently.

CanZinco Ltd. was issued Water License **NWB2NAN0208**, by the Nunavut Water Board (NWB) on October 1, 2002 for the Closure and Reclamation of the Nanisivik project. A requirement of the License, under *Part G, Items 3 to 9*, was to submit a final Reclamation and Closure Plan to the NWB, which was approved by letter on July 6, 2004 (“Approval Letter”).

Condition 2 of the Approval Letter states the following:

The Licensee shall, during the Reclamation Period, provide the NWB for its review, Quarterly Reclamation Reports (“Quarterly Reports”), which are to be submitted not later than 45 days after the end of the quarter (i.e., February 14, May 14, August 14, and November 14). The quarterly reports shall include, but not be limited to: a summary of remediation work completed to date; expenditures to date; documentation regarding waste disposal, including volumes and final location; and a revised implementation schedule, as referred to in Item 2 of this Letter of Approval. It is recommended that the Licensee should submit, with the Quarterly Reports, the effluent monitoring requirements as noted in Part H, Item 30 of the Licence.

The information contained herein is submitted as the Quarterly Report covering the months of July through September 2005.

2.0 REMEDIATION WORK

2.1 Earthworks

A summary of the work completed in each area follows.

2.1.1 West Twin Disposal Area

Tailings ponds: The remaining shale cover on the “toe” areas of the test cell and surface cell were completed in August. The shale came from material that was hauled in the previous quarter and stockpiled on site.

The sand and gravel cover which was begun in a small way in the last quarter, proceeded to completion from August 23 to September 22. In that period *149,000m³ of material (from the East Twin sand & gravel borrow area) were placed, graded and compacted.

Shorelines: The water level in West Twin was lowered so that the sludge along the shore line could be pushed 1 metre below the final water elevation. This was completed during the quarter utilizing a D4 and D8 tractor.

West Twin outlet structure: The excavation for the WTDA outlet structure was begun on September 9, with the foundation poured on Sept. 20 and the wall poured on September 29. The completion of the structure (final excavations and riprap fill) and the reinforcement of the West Twin diversion dike were scheduled for October.



2.1.2 Area 14

The design cover for this area was completed in the previous quarter, except for a small touch up fill. During the 3rd quarter, 540 m³ of shale was quarried from the Area 14 quarry and placed in the unfinished area. 630 m³ of sand and gravel acquired from an adjacent source was applied to the touch up fill area and the old portal area.

2.1.3 East Open Pit

In total *188,000m³ of shale was quarried from the Shale Hill borrow pit and placed to grade during this period. *37,000m³ of sand and gravel armouring (acquired from areas adjacent to the pit) was applied. The design cover for this area is now complete excepting for a minor touch up at the deflection berm located at the toe of the cover (to be completed in 2006).

2.1.4 K-Baseline

In total *7,290m³ of shale was quarried from the Shale Hill borrow pit and placed to grade during this period. *2,100m³ of sand and gravel armouring (acquired from areas adjacent to the portal) was applied. The design cover for this area is now complete.

2.1.5 Oceanview

In total *33,000m³ of shale was quarried from the Shale Hill borrow pit and placed to grade during this and the previous period. *7,500m³ of sand and gravel armouring (acquired from areas adjacent to the portal) was applied. The design cover for this area is now complete.

2.1.6 Land Fill

In total *1,000m³ of shale was quarried from the Landfill borrow pit and placed to grade during this period to complete the shale cover. *12,000m³ of sand and gravel armouring (acquired from the East Twin sand & gravel borrow area) was applied. The design cover for this area is now complete.

2.1.7 STOL Port

The remainder of the contaminated soils (120 m³) from this area were excavated during the third quarter. This area is now complete except for some minor recontouring which is scheduled for 2006.

2.1.8 West Open Pit

Waste rock located along the roadway and slopes from 09S portal to the West open pit was removed and placed in the pit excavation. In total 24,000m³ of waste rock were removed by excavation up September 30, 2005. Portals 00 and 01 were closed as part of this operation. An additional 380 cubic metres of hydrocarbon contaminated soils from the day tank near oo portal were excavated and hauled underground. Some of the shale cover will be placed in the 4th quarter and the remainder (including the armour rock) is scheduled for 2006.

2.1.9 Carpenter Shop

Excavation of the contaminated soils beneath (and adjacent to) the former carpenter shop was well under way at the start of the quarter. The area is now complete with an additional 5530 cubic metres excavated during the 3rd quarter. Some re-contouring took place but was not completed by the end of the season.

2.1.10 Portals

17N, 88 and 039 portals: These portals were reclaimed. Closure consisted of waste rock fill followed by shale and sand and gravel armouring.

00 and 01 portals: Both portals have been closed by placement of waste rock fill. Completion of the reclamation will consist of shale and an armour cover of sand and gravel to be completed in 2006.

2.1.11 Quarries/borrow areas

Fuji pit: This pit has been reclaimed. No additional quarrying activity in this area during the period.

Area 14 pit: This pit has been reclaimed. No additional quarrying activity in this area during the period.

Shale Hill pit: This pit was active during the quarter. The pit has been reclaimed.

Landfill pit: This pit has been reclaimed; however a small amount of work needs to be done to contour a road and berms adjacent to the top of the pit. No additional quarrying activity in this area during the period.

2.1.12 Upper Dump Pond

This area was too moist to excavate so it was covered with a minimum of 2 metres of shale and 30 centimeters of Twin Lakes Sand and Gravel. In total 2550 cubic metres of shale was placed as well as 1160 cubic metres of sand & gravel.

2.1.13 Lower Dump Pond

The liner and sludge from this pond was excavated and hauled underground. In total 440 cubic metres were excavated.

* All stated totals are estimates based on truck counts

2.2 Building Demolition

2.2.1 Mill

Vendetti Construction, (the contractor for Wolfden Resources) continued dismantling the mill and related infrastructure. Most of the exterior cladding and insulation has now been removed.



2.2.2 DMS Plant

The DMS plant was dismantled except for the two stairwells which will be taken down next year.



2.2.3 Town Site Residences

Two Houses were removed during the quarter. The units were demolished with the excavator and the rubble was loaded into haul trucks and brought underground.

2.3 Waste disposal Summary

A total of 10430 cubic metres of demolition debris were disposed of in the mine during the quarter. The waste disposal summary is tabled below.

WasteOrigin	Classification	Location	Sum Of Volume
Warehouse Yard	AE1	01 Block	20
Miscellaneous	AE2	01 Block	20
Miscellaneous	AE2	NZ9 Area	30
Carp Shop/TownW/house	DD1	NZ7 Area	250
Carp Shop/TownW/house	DD1	NZ9 Area	440
DMS	DD1	01 Block	350
Houses	DD1	01 Block	60
Houses	DD1	10&11 Block Area	250
Industrial Complex	DD1	01 Block	200
Industrial Complex	DD1	10&11 Block Area	50
Miscellaneous	DD1	01 Block	10
Miscellaneous	DD1	NZ9 Area	20
Miscellaneous	DD1	West Open Pit	40
Area 14	S1	West Open Pit	350
Lower Dump Pond	S1	NZ9 Area	100
Lower Dump Pond	S1	Vent Fan Area	340
West Adit Waste Rock	S1	10&11 Block Area	10
West Adit Waste Rock	S1	9 South Portal Area	60
West Adit Waste Rock	S1	NZ9 Area	310
West Adit Waste Rock	S1	Vent Fan Area	1110
Carp Shop/TownW/house	S2	58 Block Area	420
Carp Shop/TownW/house	S2	8 Block Area	140
Carp Shop/TownW/house	S2	NZ 54 Block Area	1570
Carp Shop/TownW/house	S2	NZ 55 Block Area	970
Carp Shop/TownW/house	S2	NZ6 Area	130
Carp Shop/TownW/house	S2	NZ7 Area	950
Carp Shop/TownW/house	S2	NZ9 Area	1350
Day Tanks on Mine Roads	S2	NZ9 Area	380
Stol Port	S2	58 Block Area	30
Stol Port	S2	NZ 54 Block Area	470

AE1 =
Abandoned
Equipment
(Free Phase HC's)
removed

AE2 =
Abandoned
Equipment
(Direct Storage)

DD1 = Demolition
Debris

S1 = Metal
Contaminated Soil

S2 = HC
Contaminated Soil

Total AE 1 =
20

Total AE2 =
50

Total DD1 = 1670

Total S1 = 2280

Total S2 = 6410

Grand Total for
Quarter = 10430

3.0 EFFLUENT MONITORING

3.1 West Twin Decant (159-4)

3.1.1 Daily Results

Effluent was released from the final discharge point 159-4 through out the month of July and continued until the 27th of August. The results of all tests and monitoring at the final discharge point broken down by month are shown in the following tables as required under Part H, Item 30 of our water license nwb1nan0208.

Station 159-4 - West Twin Decant (July)

Date	Temp. (oC)	pH	Cond. (mS)	T.S.S. (mg/L)	SO4	Cd total (mg/L)	Pb total (mg/L)	As total (mg/L)	Cu Total (mg/L)	Ni Total (mg/L)	Rad 226 (Bq/L)	Zn total (mg/L)	NH3 (mg/L)	24 hour flow
1-Jul	10.1	9.23	1.33	2.4	570	0.0001	0.002	<0.001	0.003			0.05	1.03	104933
2-Jul	13.0	8.40	1.32	1.4	619	0.0001	0.002	<0.001	0.003	0.008	<.01	0.04	0.87	114221
3-Jul	15.6	8.04	1.33	2.2	639	0.0001	0.003	0.001	0.004			0.07	1.04	7862
4-Jul	13.2	7.69	1.35	1.6	646	0.0001	0.003	0.001	0.004			0.07	0.91	7862
5-Jul	12.9	7.61	1.41	1.6	665	0.0001	0.003	0.001	0.004			0.08	1.02	6242
6-Jul	10.9	7.70	1.41	5.2	666	0.0002	0.004	0.001	0.004			0.08	0.98	4925
7-Jul	13.9	7.74	1.50	0.6	717	0.0001	0.004	0.001	0.004			0.07	1.02	8908
8-Jul	12.2	7.25	1.63	0.0	774	0.0002	0.003	0.002	0.005	0.010	<.01	0.08	0.82	8614
9-Jul	16.3	7.60	1.65	1.2	851	0.0001	0.004	0.001	0.004			0.08	1.42	7046
10-Jul	10.1	7.68	1.15	6.8	867	0.0001	0.004	0.001	0.004	0.007		0.08	1.48	7504
11-Jul	11.9	7.37	1.77	2.4	911	0.0001	0.004	0.001	0.004			0.07	1.63	78516
12-Jul	10.2	7.69	1.96	0.6	1010	0.0002	0.003	0.002	0.004			0.080	1.99	87718
13-Jul	9.2	7.61	2.06	0.0	1060	0.0002	0.004	0.002	0.005			0.1	2.14	5875
14-Jul	8.9	7.54	2.14	0.0	1060	0.0002	0.003	0.002	0.005			0.1	2.11	5556
15-Jul	9.30	7.30	2.16	0.0	1110	0.0002	0.002	0.002	0.005			0.10	2.38	4272
16-Jul	8.2	7.68	2.20	0.8	1100	0.0002	0.002	0.002	0.005	0.014	0.040	0.11	2.18	5525
17-Jul	10.1	7.52	2.14	0.0	1100	0.0002	0.003	0.002	0.005			0.11	2.19	5996
18-Jul	10.0	7.54	2.10	0.0	1100	0.0002	0.003	0.002	0.006			0.11	2.46	3940
19-Jul	10.4	7.42	2.11	6.4	1090	0.0002	0.003	0.002	0.005			0.11	2.34	9448
20-Jul	9.4	7.87	2.08	0.0	1080	0.0002	0.003	0.002	0.005			0.10	2.40	11547
21-Jul	7.4	8.06	2.12	0.0	116	0.0002	0.003	0.003	0.005			0.09	2.59	9556
22-Jul	9.10	7.86	2.19	0.2	118	0.0002	0.002	0.003	0.005			0.10	2.19	6083
23-Jul	10.2	7.84	2.19	1.0	120	0.0002	0.002	0.003	0.005	0.021	<.01	0.10	2.5	7046
24-Jul	13.6	7.56	2.22	0.6	124	0.0002	0.003	0.003	0.006			0.11	2.62	6834
25-Jul	12.3	7.54	2.27	2.0	127	0.0002	0.003	0.003	0.006			0.11	2.75	5132
26-Jul	9.5	7.23	2.33	5.2	127	0.0003	0.003	0.003	0.006			0.11	2.81	26136
27-Jul	11.1	7.73	2.30	5.4	128	0.0003	0.002	0.003	0.006			0.11	3.4	30084
28-Jul	10.2	7.76	2.34	2.4	1320	0.0004	0.002	0.002	0.006			0.11	1.14	27384
29-Jul	12.6	7.69	2.31	3.2	1310	0.0004	0.002	0.002	0.005			0.11	1.88	26909
30-Jul	12.0	7.76	2.34	2.4	1290	0.0003	0.003	0.001	0.006	0.015	0.040	0.12	2.28	24620
31-Jul	13.4	7.81	2.28	0.0	1230	0.0003	0.003	0.003	0.006			0.11	2.69	20835
mass Loading (kg)				1380	530489	0.124	1.848	0.894	2.926	1.647	2.731	53.212	1094.00	687131

Station 159-4 - West Twin Decant (August)

Date	Temp. (oC)	pH	Cond. (mS)	T.S.S. (mg/L)	SO4 Accutest	Cd total (mg/L)	Pb total (mg/L)	As total (mg/L)	Cu Total (mg/L)	Ni Total (mg/L)	Rad 226 (Bq/L)	Zn total (mg/L)	NH3 (mg/L)	24 Hour Flow
1-Aug	12.6	7.85	2.3	0.0	1200	0.0003	0.003	0.003	0.006			0.11	2.75	25250.4
2-Aug	13.5	7.72	2.29	0.0	1200	0.0003	0.003	0.003	0.006			0.11	2.57	25578.72
3-Aug	13.1	7.73	2.32	0.0	1210	0.0003	0.004	0.003	0.006			0.11	2.75	26723.52
4-Aug	11.70	7.80	2.32	0.4	1230	0.0002	0.007	0.003	0.005			0.11	2.51	23012.64
5-Aug	10.8	7.81	2.36	0.0	1240	0.0003	0.009	0.003	0.005			0.11	0.02	22161.6
6-Aug	11.1	7.91	2.29	0.0	1220	0.0003	0.008	0.003	0.005	0.018	0.03	0.11	2.75	21638.88
7-Aug	12.2	7.79	2.32	0.6	1380	0.0003	0.010	0.002	0.006			0.13	2.07	20174.4
8-Aug	12.0	7.88	2.32	0.6	1370	0.0004	0.001	0.002	0.007			0.13	2.30	20839.68
9-Aug	13.0	7.84	2.35	0.0	1410	0.0004	0.013	0.002	0.008			0.13	2.01	21997.44
10-Aug	14.9	7.80	2.32	0.4	1390	0.0003	0.017	0.002	0.007			0.13	2.53	19440
11-Aug	12.4	8.02	2.35	2.0	1390	0.0003	0.017	0.002	0.007			0.13	2.36	22273.92
12-Aug	13.8	7.84	2.34	0.2	1380	0.0003	0.014	0.002	0.007			0.12	2.07	535.68
13-Aug	14.4	7.94	2.59	1.2	1400	0.000	0.013	0.002	0.006	0.018		0.13	2.30	544.32
14-Aug	16.3	8.02	2.76	0.6	1470	0.0003	0.005	0.002	0.006			0.13	2.10	627.12
15-Aug	12.6	8.02	2.68	0.0	1420	0.0004	0.006	0.002	0.006			0.13	2.68	594.55
16-Aug	10.4	7.95	2.83	1.8	1480	0.0003	0.008	0.002	0.006			0.14	2.39	18316.8
17-Aug	10.6	7.84	2.80	0.0	1490	0.0003	0.007	0.002	0.006			0.13	2.45	1836
18-Aug	9.7	8.07	2.83	4.6	1470	0.0003	0.007	0.002	0.006			0.13	2.27	548.64
19-Aug	9.3	8.00	2.81	0.2	1540	0.000	0.005	0.002	0.006			0.12	2.57	535.68
20-Aug	8.6	8.04	2.85	1.8	1430	0.0002	0.004	0.002	0.006	0.021		0.11	2.51	574.56
21-Aug	9.5	7.96	2.83	0.0	1480	0.0003	0.004	0.002	0.006			0.11	2.33	502.74
22-Aug	10.0	7.92	2.85	2.8	1540	0.0003	0.005	0.003	0.005			0.09	2.51	430.92
23-Aug	9.5	7.85	2.85	3.7	1250	0.0002	0.004	0.003	0.005			0.07	2.27	359.10
24-Aug	9.4	7.62	2.85	2.3	1450	0.0002	0.004	0.003	0.005			0.07	2.39	287.28
25-Aug	8.1	7.72	2.88	2.0	1410	0.0002	0.004	0.004	0.004			0.06	2.51	215.46
26-Aug	8.9	7.72	2.88	2.2	1490	0.0002	0.004	0.003	0.004			0.08	2.21	143.64
27-Aug	5.6	8.07	2.99	1.7	1510	0.0002	0.003	0.003	0.004	0.020		0.07	2.68	71.82
Mass Loading (kg)				128.0	359370	0.0845	2.211	0.697	1.690	2.781	n/a	32.96	624.45	275216

3.1.2 Acute Lethality

Samples were collected at 159-4 on July 30th and August 27th and tested for Acute Lethality to Rainbow Trout. The results are tabled below

Acute Lethality to Rainbow Trout			
Date	Sample Station	% Mortality Effluent	Effluent Concentration
July 30	159-4	0	100
August 27	159-4	0	100

3.1.3 Daphnia Magna Toxicity

The Effluent from 159-4 was also tested for toxicity to Daphnia magna on July 30th and August 27th. The results from these tests are tabled below.

Daphnia Magna Toxicity			
Date	Sample Station	% Mortality Effluent	Effluent Concentration
July 30	159-4	0	100
August 27	159-4	0	100

3.1.4 Sublethal Toxicity

Results from the various sublethal toxicity tests on the 159-4 – August 27th sample are tabled below.

Test	Effect	Value
Ceriodaphnia Dubia (Survival and Reproduction)	LC50 (Survival)	>100%
	IC25 (Reproduction)	60.8%
Fathead Minnow (Survival and Growth)	IC25 (Growth)	>100%
	LC50 (Survival)	>100%
Lema Minor (Growth Inhibition)	IC25 (Weight)	>97%
	IC25 (Frond Production)	66.1%
Selenastrum Capricornutum (Growth Inhibition)	IC25 (Growth)	>100%

3.1.5 Effluent Characterization

Effluent characterization was conducted as per the metal mining effluent regulations and is tabled below.

Date	Location	Type	Al	Cd	Fe	Hg	Mo	NH3	Nitrate
			mg/L	mg/L	mg/L	mg/L	mg/L	mg/L	mg/L
Jul-30	159-4	Grab	0.03	0.0001	0.1	<0.0001	0.021	1.25	0.76
Aug-27	159-4	Grab	0.04	0.0003	0.12	<0.0001	0.026	2.28	0.96

3.1.6 Water Quality Monitoring

Water quality monitoring was conducted on samples taken from the exposure and reference areas relating to the effluent discharge as per the metal mining effluent regulations. The results are tabled below. The exposure area sample (159-4A) is located approximately 50 metres downstream from the decant structure at station 159-4. The reference area sample (159-4B) is located approximately 50 metres upstream from the decant structure.

Date	Location	Type	Al	Cd	Fe	Hg	Mo	NH ₃	Nitrate
			mg/L	mg/L	mg/L	mg/L	mg/L	mg/L	mg/L
July 30	159-4A	Composite	0.34	0.0001	0.17	< 0.0001	0.008	n/a	0.38
July 30	159-4B	Grab	0.17	< 0.0001	0.08	< 0.0001	< 0.005	0.05	< 0.10
August 27	159-4A	Composite	0.23	< 0.0001	0.10	< 0.0001	< 0.005	0.06	< 0.10
August 27	159-4B	Grab	0.22	< 0.0001	0.08	< 0.0001	< 0.005	0.02	< 0.10

Date	Location	Type	Temp	Diss O ₂	pH	TSS	Hardness	Alkalinity
			°C	%		mg/L	mg/L	mg/L
July 30	159-4A	Composite	12.0	11.25	7.78	2.6	479	24
July 30	159-4B	Grab	11.2	11.70	7.99	3.6	25	16
August 27	159-4A	Composite	6.9	12.52	8.33	1.2	66	24
August 27	159-4B	Grab	6.2	12.42	8.68	0.8	34	21

Date	Location	Type	Arsenic	Copper	Cyanide	Lead	Nickel	Zinc	Ra 226
			°C	%		mg/L	mg/L	mg/L	Bq/L
July 30	159-4A	Composite	<0.001	0.002	n/a	0.001	0.005	0.04	<0.01
July 30	159-4B	Grab	<0.001	<0.001	n/a	<0.001	<0.005	<0.01	<0.01
August 27	159-4A	Composite	<0.001	<0.001	n/a	<0.001	<0.005	<0.01	n/a
August 27	159-4B	Grab	<0.001	<0.001	n/a	<0.001	<0.005	<0.01	n/a

4.0 PROJECT COSTS

The following is a list of costs attributed to 3rd quarter reclamation activities at Nanisivik Mine.

Description	Jul-05	Aug-05	Sep-05	Total 3rd Quarter 2005
Water Quality Monitoring	23,983.56	28,410.85	10,241.25	62,635.66
Geotechnical Monitoring West Twin Dyke	2,284.74	1,740.29	24,352.88	28,377.91
Outside Services/Closure Studies		5,213.47	0.00	5,213.47
Tailings Impoundment & Dump Ponds	-1,453,729.70	8,508.17	30,324.08	-1,414,897.45
Spillway	1,683.66	6,841.73	9,934.96	18,460.35
Tailings Cover	1,521,679.73	1,335,688.73	925,364.08	3,782,732.54
Material Haulage	392,552.43	-245,760.82	170,623.42	317,415.03
Open Pits & Waste Rock	78,136.58	77,514.80	78,580.54	234,231.92
Buildings & Equipment	52,936.50	48,586.75	34,875.08	136,398.33
Tank Farm & Dock	0.00	0.00	0.00	0.00
Townsite	10,670.40	22,418.61	11,355.94	44,444.95
Landfill Site	0.00	352.02	8,393.72	8,745.74
Mine Closure(Sealing entrances)	0.00	0.00	0.00	0.00
Hazardous Material Disposal	0.00	13,303.25	0.00	13,303.25
Tailings & Water Line Recovery	0.00	0.00	0.00	0.00
Access Road Cleanup, Culvert Removal	0.00	0.00	0.00	0.00
Vehicle Maintenance/Operating labour	19,552.27	11,010.88	32,207.89	62,771.04
Inventory Adjustments		742.71		742.71
Total	649,750.17	1,314,571.44	1,336,253.84	3,300,575.45

5.0 APPENDICES:

5.1 Photos

- Sand and Gravel Cover in progress at the Test cell
- View of the reclaimed East Open Pit
- Final Sloping of the Shale Hill Quarry
- Sand and Gravel placement at the landfill site in progress
- Final Sloping of the Shale Hill Quarry
- Shale layered in to the upper dump pond
- Waste Rock placed in the West Open Pit

APPENDIX 5.1

Photos



Sand and Gravel Cover in progress at the Test cell



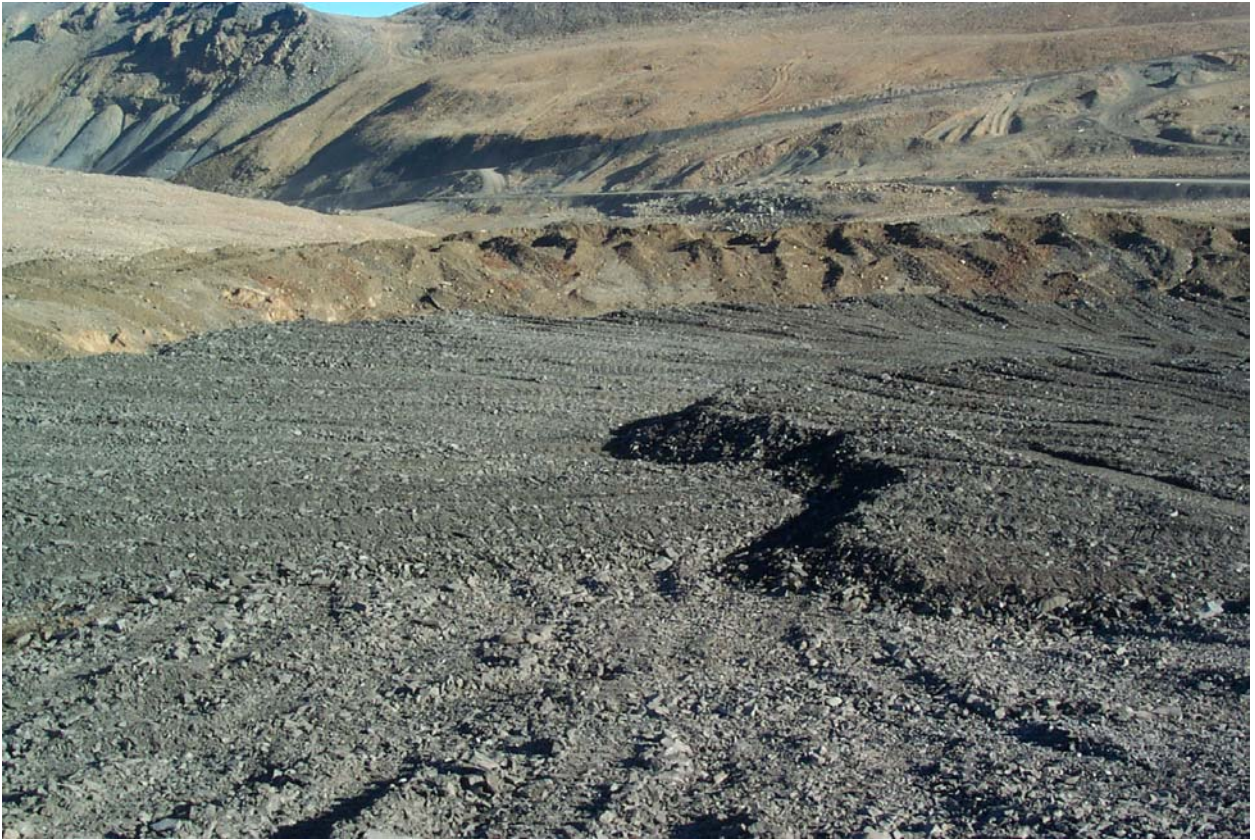
View of the reclaimed East Open Pit



Sand and Gravel placement at the landfill site in progress



Final Sloping of the Shale Hill Quarry



Shale layered in to the upper dump pond



Waste Rock placed in the West Open Pit

