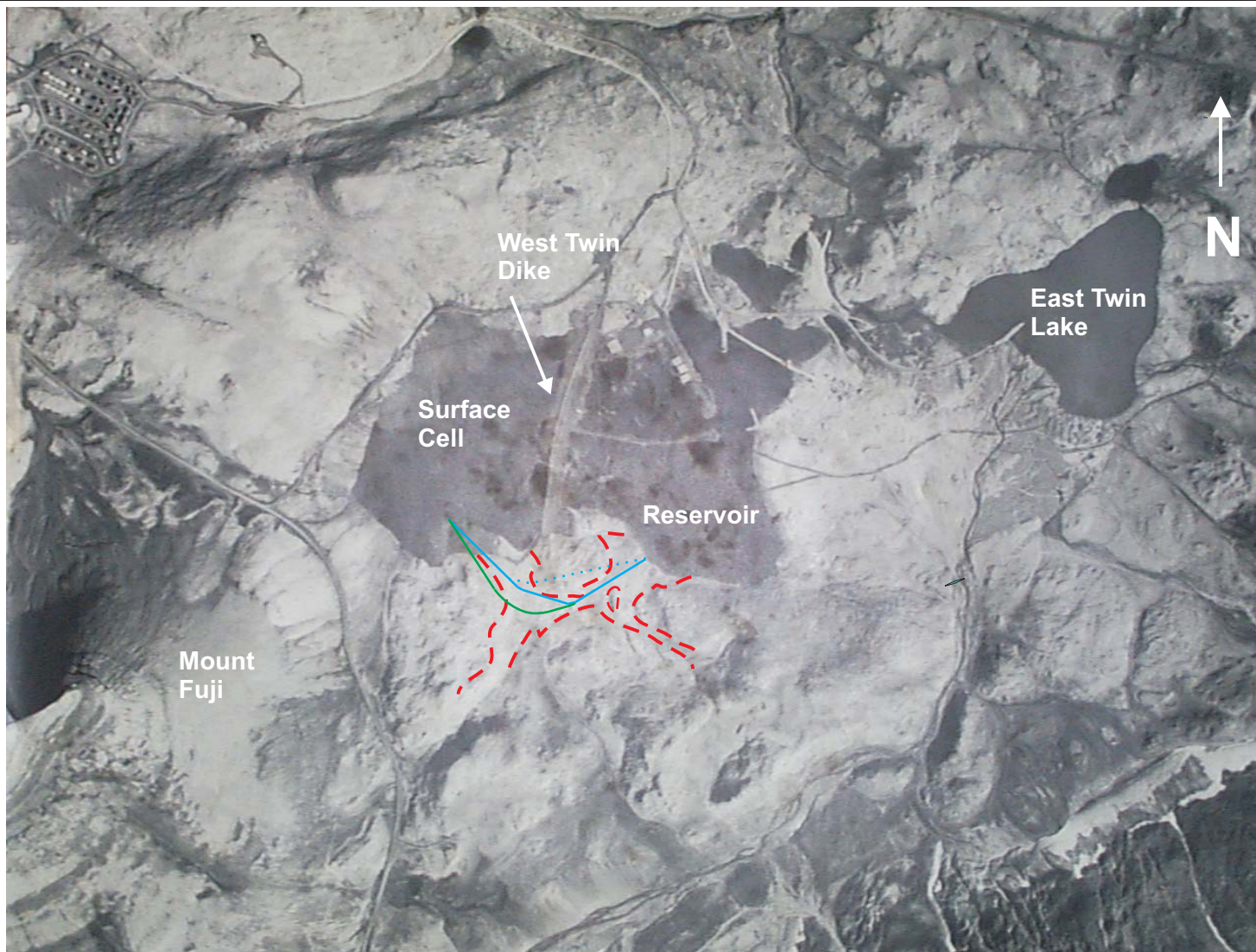
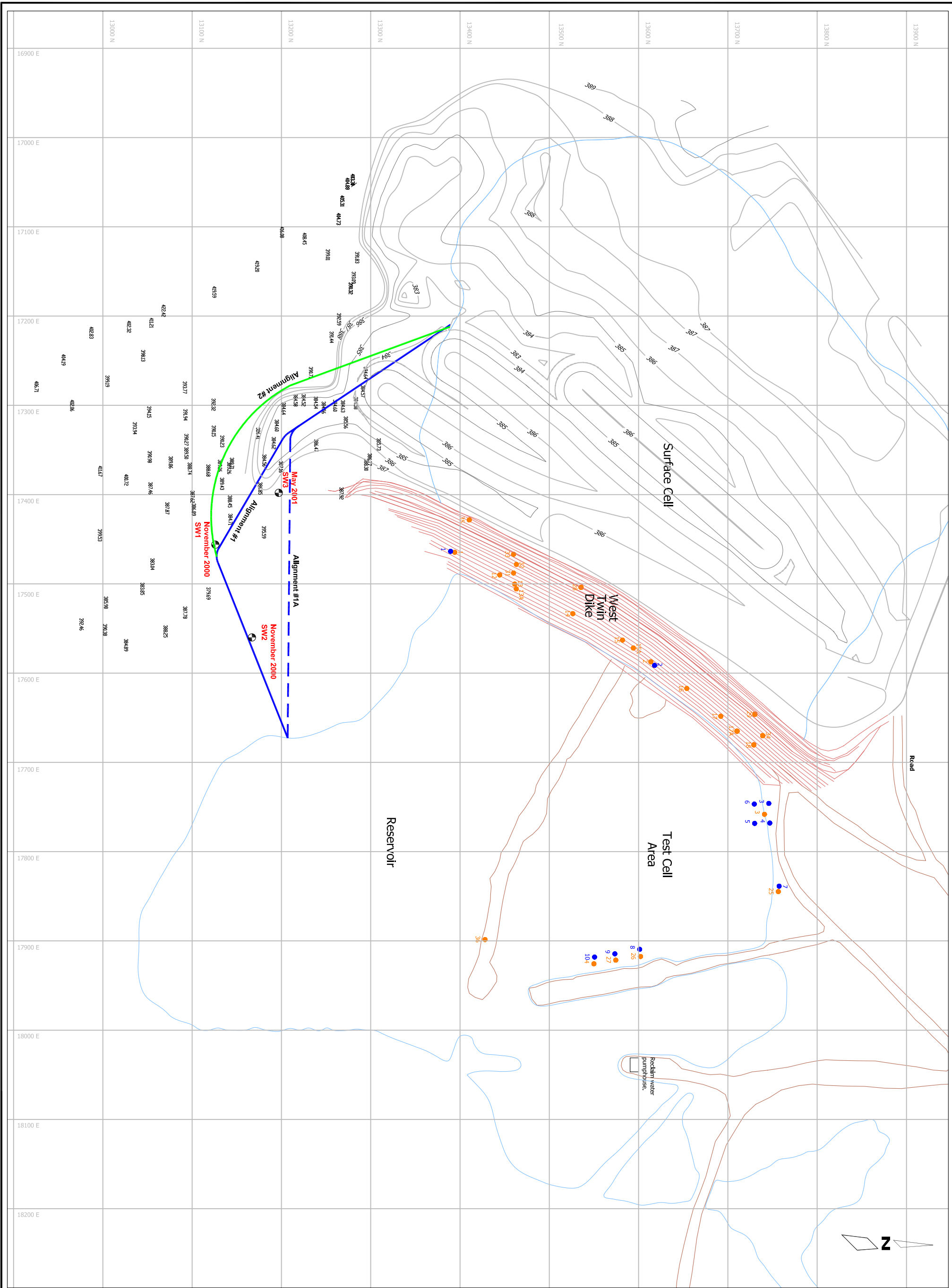


- Spillway Alignment #1
- - - Spillway Alignment #1a
- Spillway Alignment #2
- - - Natural Drainage Path Watershed Boundaries



Note: Aerial Photo Taken Circa 1995

SCALE: 1:13500	DATE: February, 2002	DRAWN: GKC	<div><div><div>BGC ENGINEERING INC.</div><div>AN APPLIED EARTH SCIENCES COMPANY</div><div>Calgary, AB Phone (403) 250-5185</div></div></div>	PROJECT: Preliminary Spillway Design		
DESIGNED: GKC	CHECKED: JWC	APPROVED: JWC		TITLE: Proposed Spillway Alignments		
AS A MUTUAL PROTECTION TO OUR CLIENT, THE PUBLIC AND OURSELVES, ALL REPORTS AND DRAWINGS ARE SUBMITTED FOR THE CONFIDENTIAL INFORMATION OF OUR CLIENT FOR A SPECIFIC PROJECT AND AUTHORIZATION FOR USE AND/OR PUBLICATION OF DATA, STATEMENTS, CONCLUSIONS OR ABSTRACTS FROM OR REGARDING OUR REPORTS AND DRAWINGS IS RESERVED PENDING OUR WRITTEN APPROVAL.			CLIENT Nanisivik Mine	PROJECT No. 0255-004-01	DWG. No. Figure 2	REV. 0



- LEGEND:**
- ALIGNMENT #1
 - ALIGNMENT #2
 - ALIGNMENT #1A
 - DENOTES THERMOCUPLE LOCATION
 - DENOTES FROST GAUGE LOCATION
 - DENOTES BOREHOLE LOCATION

- NOTES:**
1. BASE MAP AND SURVEY INFORMATION SUPPLIED BY NANISIVIK MINE AS THE FOLLOWING TWO FILES:
a). SPILLWAY BASE MAP-14.DWG
b). WTDN-14.DWG
 2. SURFACE CELL CONTOURS FROM DRAWING S9909-1a29v14.dwg AS ESTIMATED BY NANISIVIK MINE FOR CLOSURE PHASE BEGINNING.
 3. THE CREST OF WEST TWIN DYKE IS NOMINALLY SITUATED AT ELEVATION OF 388.0 m ASL.
 4. ELEVATION OF RESERVOIR TYPICALLY VARIES BETWEEN 369.5 m AND 371.3 m ASL.



CLIENT:
**NANISIVIK MINE,
A DIVISION OF
CANZINCO LTD.**

THIS DESIGN IS INTENDED TO BE USED FOR THE DESIGN AND CONSTRUCTION OF THE RESERVOIR AND SPILLWAY AND IS LIMITED TO THE USE OF THE INFORMATION PROVIDED IN THE DESIGN. THE DESIGNER IS NOT RESPONSIBLE FOR ANY OTHER USES OF THIS DESIGN OR FOR ANY OTHER INFORMATION OR DATA PROVIDED TO THE DESIGNER. THE DESIGNER IS NOT RESPONSIBLE FOR ANY OTHER USES OF THIS DESIGN OR FOR ANY OTHER INFORMATION OR DATA PROVIDED TO THE DESIGNER.

REV.	DATE	REVISION NOTES	DRAWN	CHECKED	APPROVED
-	-	-	-	-	-
-	-	-	-	-	-
-	-	-	-	-	-
-	-	-	-	-	-

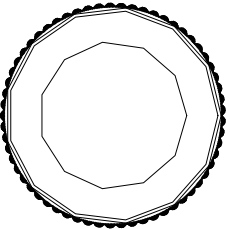
SCALE:	1:1,000
DATE:	02-02-16
DRAWN:	TN
DESIGNED:	GC
CHECKED:	JWC
APPROVED:	JWC

PROJECT:	PRELIMINARY SPILLWAY DESIGN
TITLE:	LAYOUT OF
PROPOSED SPILLWAY ALIGNMENTS	
PROJECT NO.	0255-004-01
DWG. NO.	FIGURE 5
REV.	-

CLIENT:

NANISIVIK MINE,
A DIVISION OF
CANZINCO LTD.

—	—	—	—	—	—
—	—	—	—	—	—
—	—	—	—	—	—
REV.	DATE	REVISION NOTES	DRAWN	CHECKED	APPROVED

SCALE:	AS SHOWN	
DATE:	02-02-18	
DRAWN:	TN	
DESIGNED:	GC	
CHECKED:	JWC	
APPROVED:	JWC	

PROJECT	PRLIMINARY SPILLWAY DESIGN	
TITLE	APPROXIMATE LONGITUDINAL SECTION FOR ALIGNMENT #1	
PROJECT No.	DWG. No.	REV.
0255-004-01	FIGURE 7	

BGC

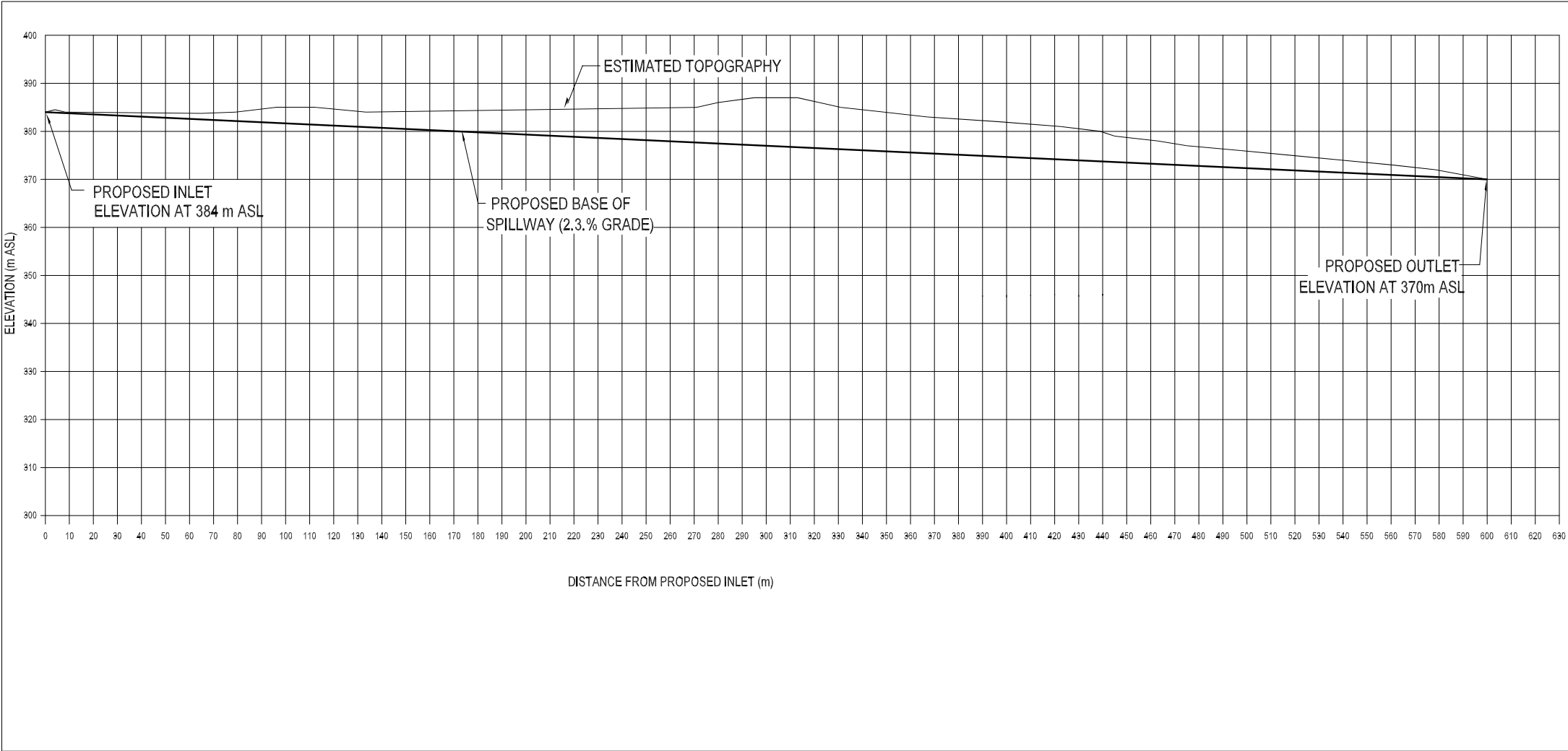
AN APPLIED EARTH SCIENCES COMPANY

Calgary, AB

BGC ENGINEERING INC.

AN APPLIED EARTH SCIENCES COMPANY

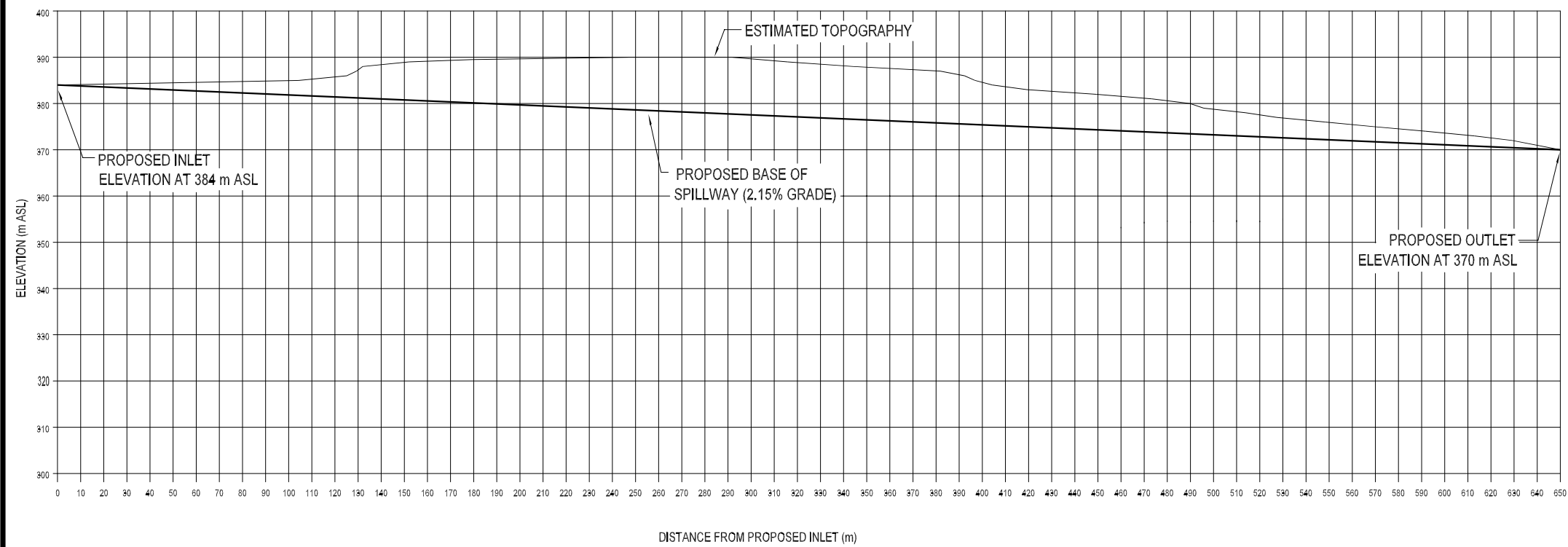
Phone: (403) 250 5185



NOTE: SURFACE TOPOGRAPHY BASED ON SURVEY DATA PROVIDED BY
NANISIVIK MINE ON DRAWING: 'SPILLWAY BASE MAPv14.DWG

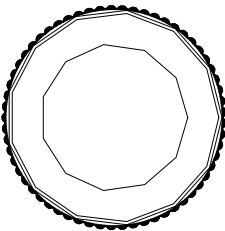
CLIENT:

**NANISIVIK MINE,
A DIVISION OF
CANZINCO LTD.**



NOTE: SURFACE TOPOGRAPHY BASED ON SURVEY DATA PROVIDED BY
NANISIVIK MINE ON DRAWING: 'SPILLWAY BASE MAPv14.DWG

SCALE:	AS SHOWN
DATE:	02-02-18
DRAWN:	TN
DESIGNED:	GC
CHECKED:	JWC
APPROVED:	JWC



PROJECT	PRLIMINARY SPILLWAY DESIGN		
TITLE	APPROXIMATE LONGITUDINAL SECTION FOR ALIGNMENT #2		
PROJECT No.	DWG. No.	REV.	
0255-004-01	FIGURE 8		

BGC

BGC ENGINEERING INC.

AN APPLIED EARTH SCIENCES COMPANY

Calgary, AB

Phone: (403) 250 5185