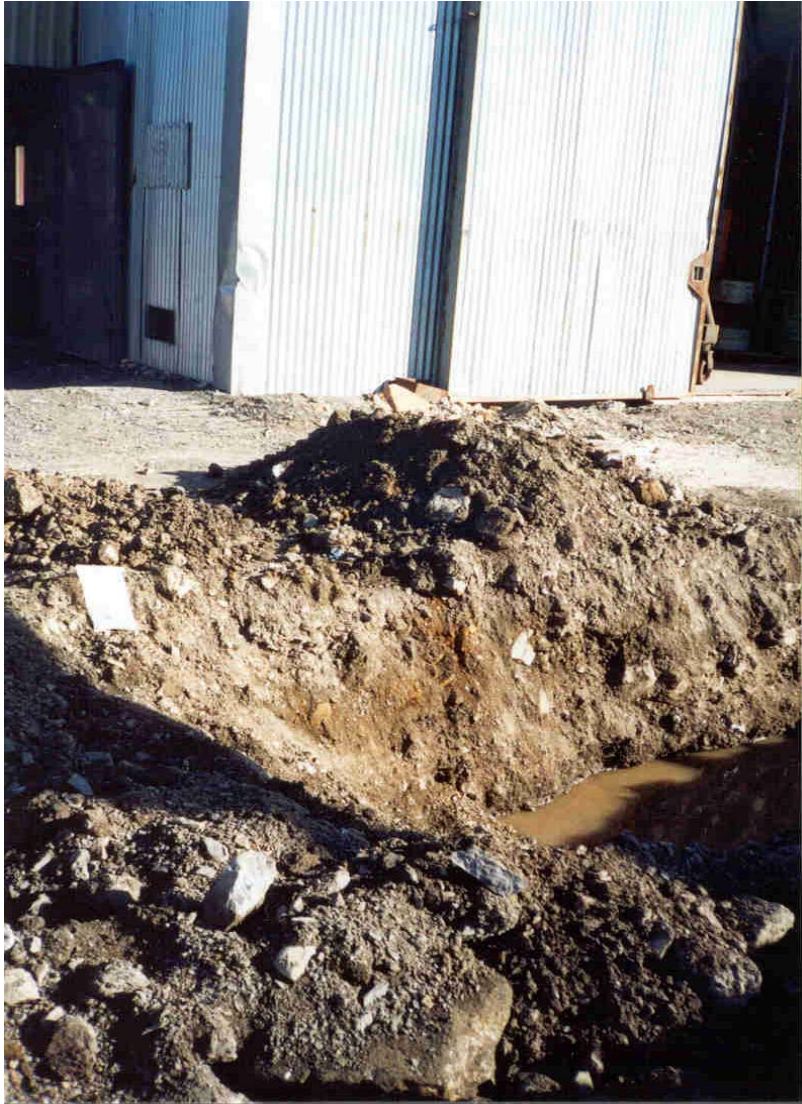


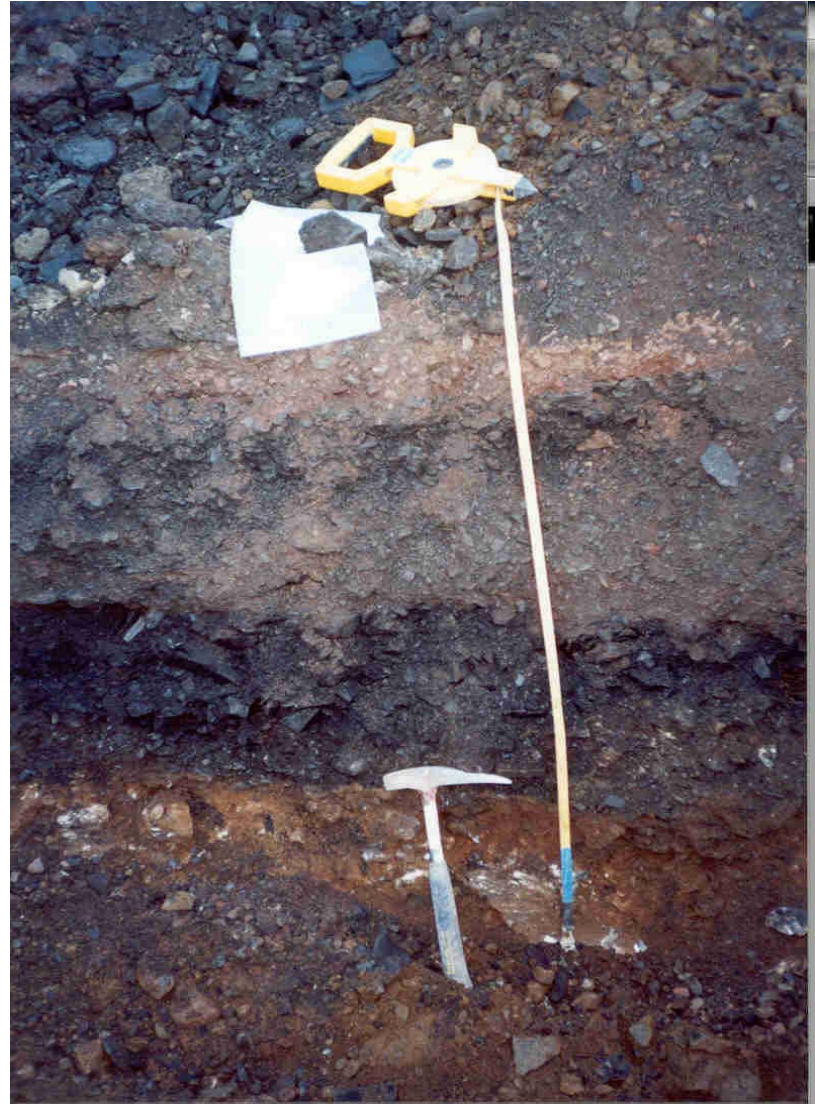
- PHOTOGRAPHS -

PHOTOGRAPH 16



TP02-81 Detail near Compressor Shed at Industrial Complex Area, July 2002

PHOTOGRAPH 17



TP02-87 Detail at Industrial Complex Area, July 2002. Blue and green coloured staining 0.2 m to 0.25 m.

- PHOTOGRAPHS -

PHOTOGRAPH 18



TP02-45 Detail at Dock Area, July 2002. Typical coarse-grained texture.

PHOTOGRAPHS -

PHOTOGRAPH 19



TP02-33 Detail near Concentrate Storage Shed at Dock Area, July 2002. Former ditch adjacent conveyor.

- PHOTOGRAPHS -

PHOTOGRAPH 20



TP02-49 and TP02-50 Excavation within berm surrounding the fuel pump building at Dock Area, July 2002.

PHOTOGRAPH 21



SS02-08 Detail at Historic Tailings Line Break down gradient of Potable Water Tank, July 2002.
Note fresh shale under tailings pipeline.

- PHOTOGRAPHS -

PHOTOGRAPH 22



TP02-130 Detail at Historic Tailings Line Break, July 2002

PHOTOGRAPHS -

PHOTOGRAPH 23



SS02-011 Detail at Historic Tailings Line Break, July 2002. Note orange stained drainage path from tailings pipeline at crest of ridge to sample site.