



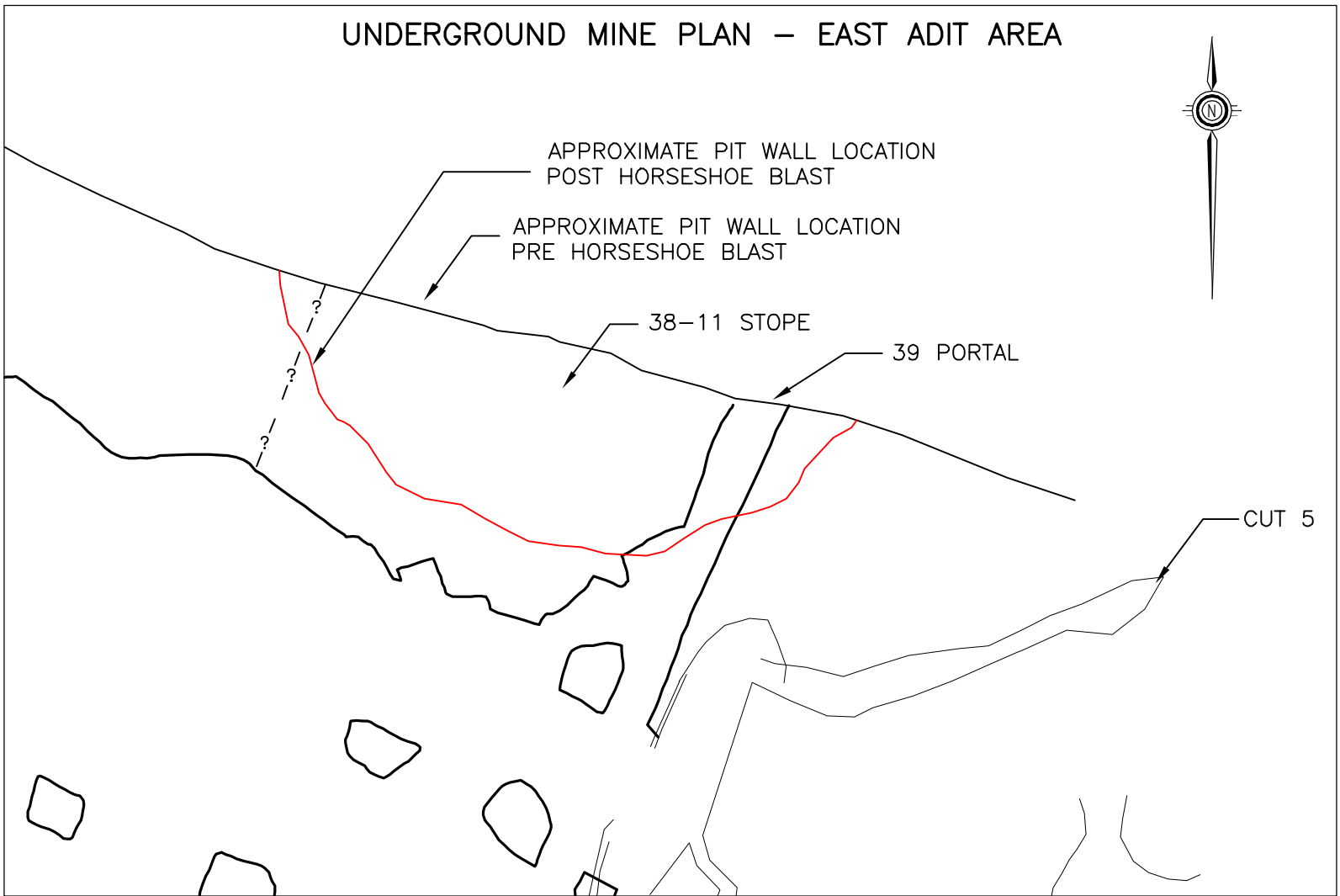
PHOTO 1 (SEPTEMBER 2004)  
TAKEN FROM NEAR PILON 1 LOOKING SOUTHWEST.  
VIEW OF PILE OF BLOCKY DEBRIS FROM HORSESHOE BLAST AND OPENING INTO 38-11 STOPE.



PHOTO 2 (SEPTEMBER 2004)  
TAKEN FROM TOP OF BROW LOOKING NORTHEAST.  
VIEW OF PILE OF BLOCKY DEBRIS FROM HORSESHOE BLAST.



PHOTO 3 (SEPTEMBER 2004)  
TAKEN FROM TOP OF DEBRIS PILE LOOKING SOUTHWEST.  
VIEW OF ROCK BLOCK ON HEADWALL EXHIBITING DILATED JOINTS.



- NOTES:
1. SCALE IS APPROXIMATE.
  2. UNDERGROUND MINE PLAN SUPPLIED BY MINE SITE.
  3. PRE- AND POST- HORSESHOE BLAST PIT WALL LOCATION APPROXIMATE.
  4. 38-11 STOPE EXCAVATION APPROXIMATED BASED ON FIELD OBSERVATIONS AND PRE AND POST HORSESHOE BLAST PHOTOGRAPHS.

#### FIELD MAPPING OF HEADWALL NEAR HORSESHOE BLAST (BGC SEPTEMBER 2004)

- NOTES:
1. ALL SURVEY DETAILS ARE BASED ON STEEL TAPE, RANGE FINDER AND BRUNTON COMPASS. ALL DETAILS ARE APPROXIMATE.
  2. PILON ELEVATIONS BASED ON ASSUMED 100m ELEVATION AT PILON 1.

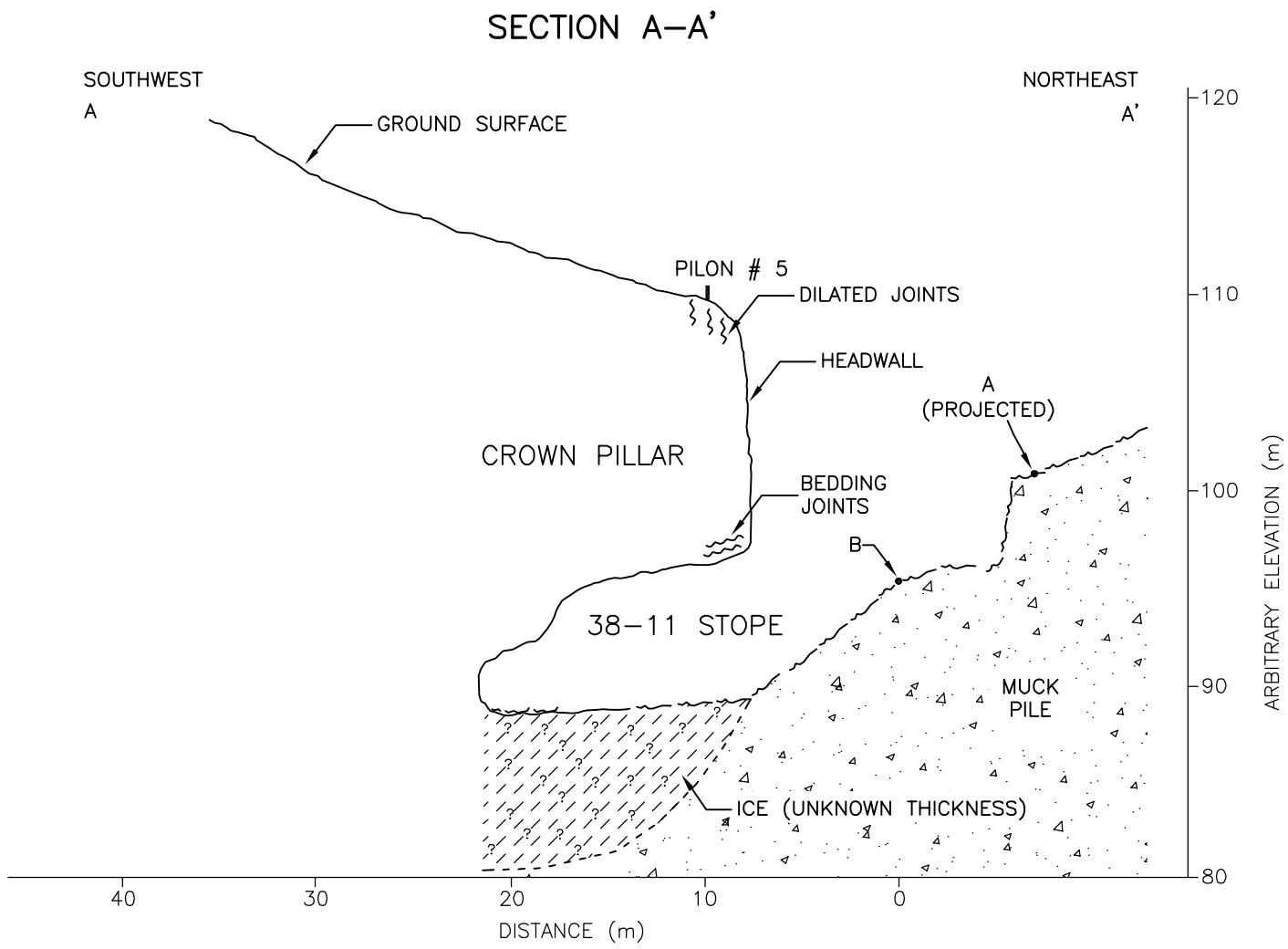
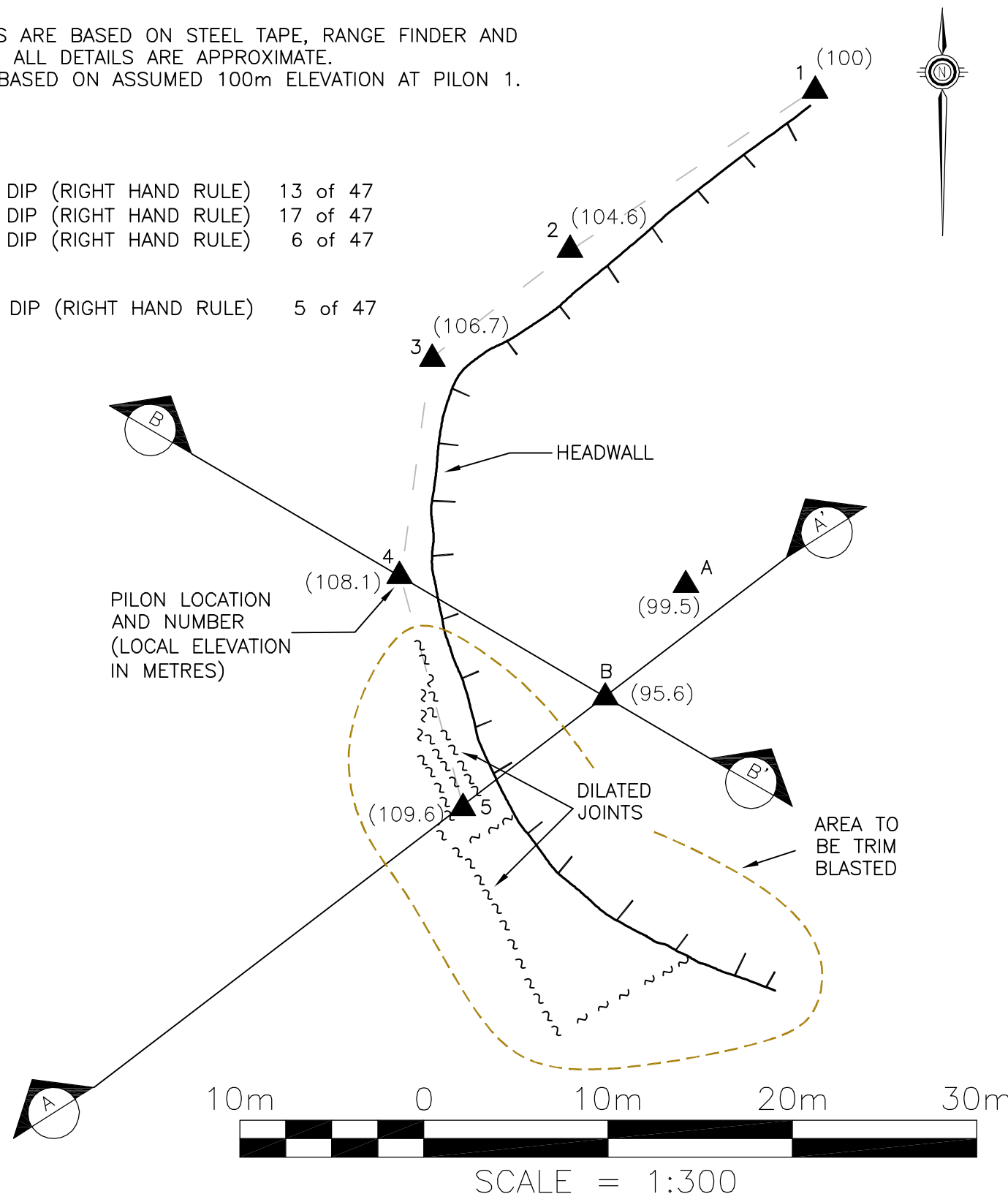
##### DIPS SUMMARY

##### JOINTS:

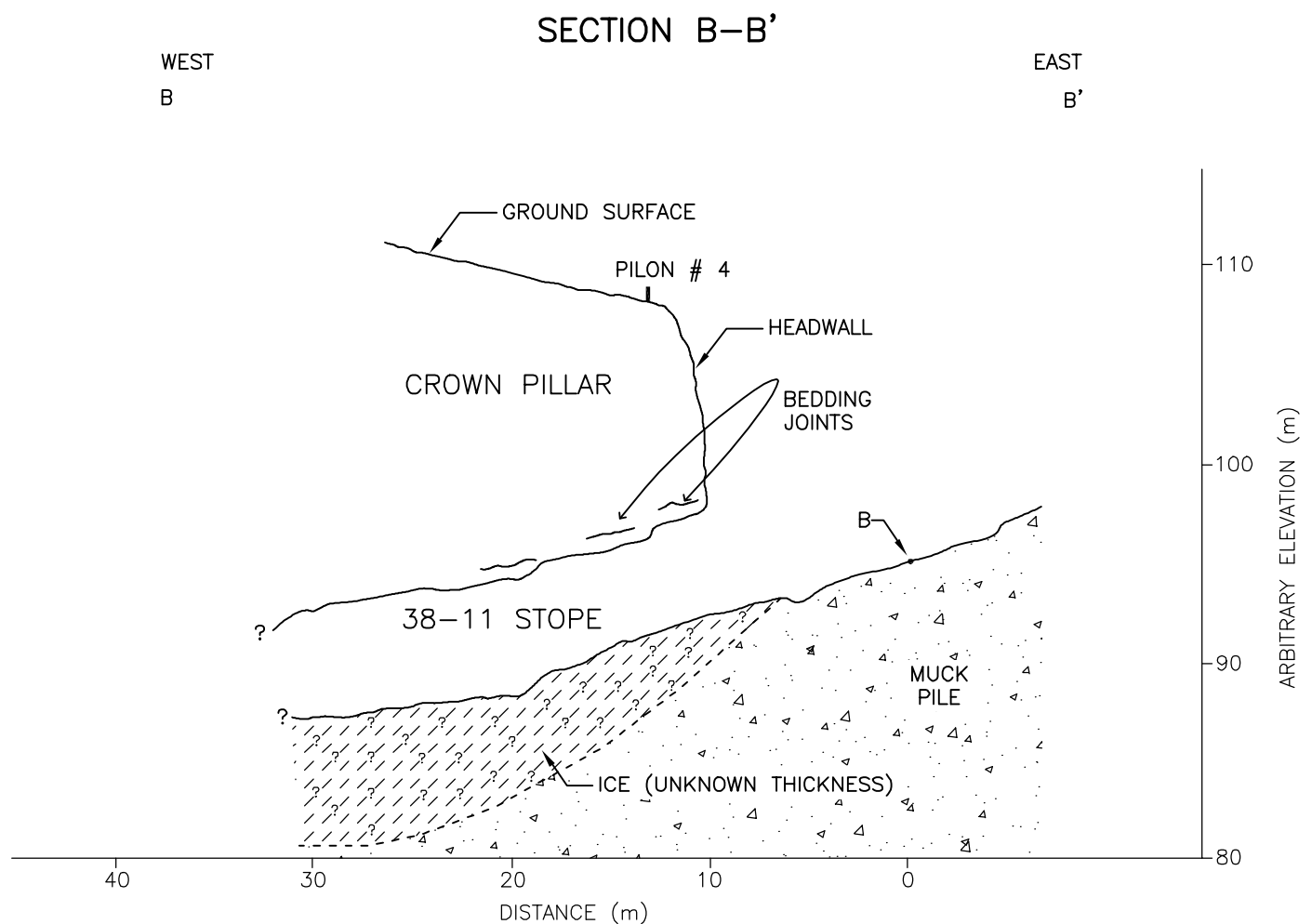
- |  |          |
|--|----------|
| 1. 58° 89° STRIKE & DIP (RIGHT HAND RULE)  | 13 of 47 |
| 2. 143° 85° STRIKE & DIP (RIGHT HAND RULE) | 17 of 47 |
| 3. 190° 90° STRIKE & DIP (RIGHT HAND RULE) | 6 of 47  |

##### BEDDING:

- |  |         |
|--|---------|
| 1. 310° 29° STRIKE & DIP (RIGHT HAND RULE) | 5 of 47 |
|--|---------|

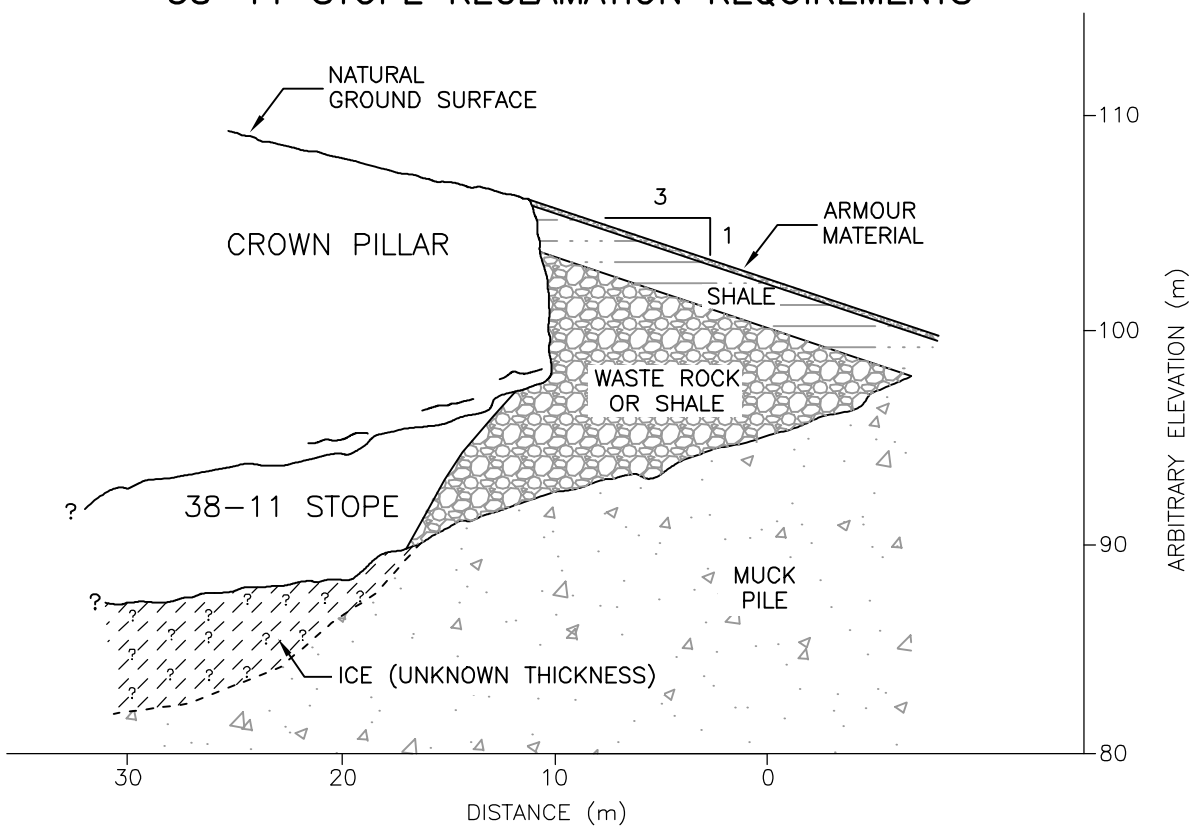


- NOTES:
1. ALL SURVEY DETAILS ARE BASED ON STEEL TAPE, RANGE FINDER AND BRUNTON COMPASS. ALL DETAILS ARE APPROXIMATE.
  2. PILON ELEVATIONS BASED ON ASSUMED 100 m ELEVATION AT PILON 1.



- NOTES:
1. ALL SURVEY DETAILS ARE BASED ON STEEL TAPE, RANGE FINDER AND BRUNTON COMPASS. ALL DETAILS ARE APPROXIMATE.
  2. PILON ELEVATIONS BASED ON ASSUMED 100 m ELEVATION AT PILON 1.

#### 38-11 STOPE RECLAMATION REQUIREMENTS



#### RECLAMATION WORK PRESCRIPTION:

1. TRIM BLAST TO REMOVE ROCK MASS WITH DILATED JOINTS (PHOTO 3),
2. SCALE AREA TRIM BLASTED AND REMAINING PORTION OF BROW.
3. USING A DOZER, OPEN ACCESS TO TOP OF "HORSESHOE BLAST" MUCK PILE.
4. IMPORT ROCKFILL AND PUSH IT AS FAR INTO STOPE AS POSSIBLE WITHOUT OPERATOR PASSING UNDERNEATH CROWN PILLAR.
5. CONTINUE PLACING ROCKFILL UNTIL ENTIRE "HORSESHOE BLAST" AND RECENTLY TRIMMED AREAS ARE COMPLETELY BACKFILLED AND SLOPED TO CONFORM TO THE PRE-EXISTING NATURAL ANGLE.
6. WHEN COMPLETE, THERE SHOULD BE AT MINIMUM 2.2 m OF SHALE FILL AND ARMOUR MATERIAL COVERING ALL WASTE BACKFILL.

CLIENT:  
NANISIVIK MINE, A DIVISION OF CANZINCO LTD.

AS A MUTUAL PROTECTION TO OUR CLIENT, THE PUBLIC AND OURSELVES, ALL REPORTS AND DRAWINGS ARE SUBMITTED FOR THE CONFIDENTIAL INFORMATION OF OUR CLIENT FOR A SPECIFIC PROJECT AND AUTHORIZATION FOR USE AND/OR PUBLICATION OF DATA, STATEMENTS, CONCLUSIONS OR ABSTRACTS FROM OUR REPORTS AND DRAWINGS IS RESERVED PENDING OUR WRITTEN APPROVAL.

REV.	DATE	REVISION NOTES	DRAWN	CHECKED	APPROVED
------	------	----------------	-------	---------	----------

SCALE:	AS SHOWN
DATE:	JAN 2005
DRAWN:	CJT
DESIGNED:	BRG
CHECKED:	GKC
APPROVED:	JWC

PROJECT	MINE OPENINGS CLOSURE PLAN				
TITLE	EAST ADIT AREA RECLAMATION REQUIREMENTS				
PROJECT No.	0255-009-10.03	DWG. No.	29	REV.	0

**BGC ENGINEERING INC.**  
AN APPLIED EARTH SCIENCES COMPANY  
BGC Calgary, AB Phone: (403) 250 5185