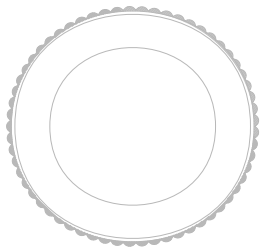


CLIENT: NANISIVIK MINE, A DIVISION OF CANZINCO LTD.

AS A MUTUAL PROTECTION TO OUR CLIENT, THE PUBLIC AND OURSELVES, ALL REPORTS AND DRAWINGS ARE SUBMITTED FOR THE CONFIDENTIAL INFORMATION OF OUR CLIENT FOR A SPECIFIC PROJECT AND AUTHORIZATION FOR USE AND/OR PUBLICATION OF DATA STATEMENTS CONCLUSIONS OR ABSTRACTS FROM OR REGARDING OUR REPORTS AND DRAWINGS IS RESERVED PENDING OUR WRITTEN APPROVAL.

	-	-	-	-	-
-	-	-	-	-	-
-	-	-	-	-	-
REV.	DATE	REVISION NOTES	DRAWN	CHECKED	APPROVED

SCALE:	AS SHOWN
DATE:	DECEMBER 2004
DRAWN:	SLF
DESIGNED:	BRG
CHECKED:	GKC
APPROVED:	JWC



PROJECT	MINE OPENINGS CLOSURE PLAN		
TITLE	STRUCTURAL GEOLOGY OF NANISIVIK AREA		
PROJECT No.	0255-009-10.03	DWG. No.	4
		REV.	0

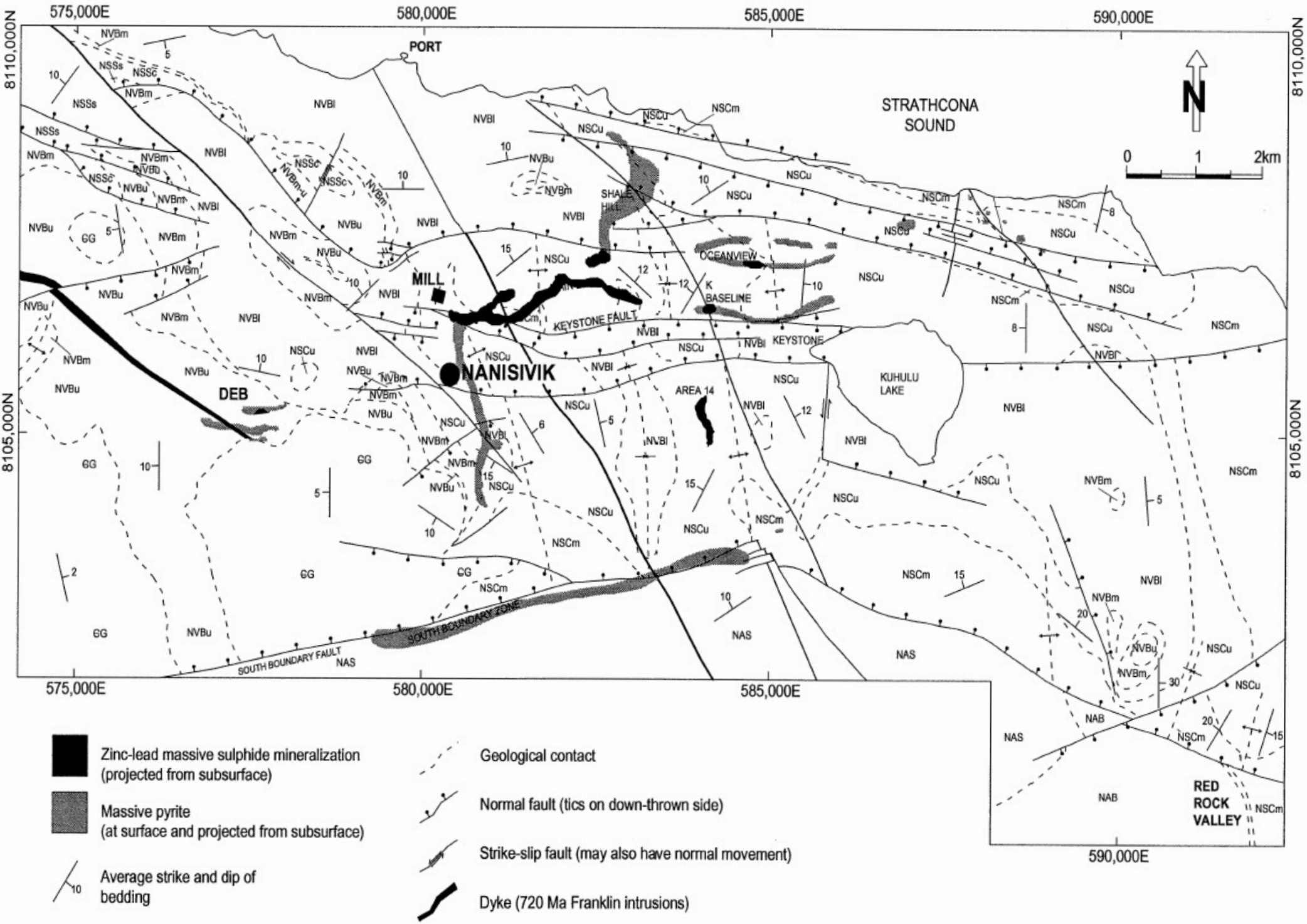
BGC

BGC Engineering Inc.

AN APPLIED EARTH SCIENCES COMPANY

Calgary Alberta

Phone: (403) 250-5185



Source: Patterson and Powis, (2002)