

PHOTO 1 – JULY 2004 (VIEW LOOKING NORTH)
GENERAL VIEW OF WEST OPEN PIT AREA.
NOTE LOCATIONS OF 00 AND 01 PORTALS.



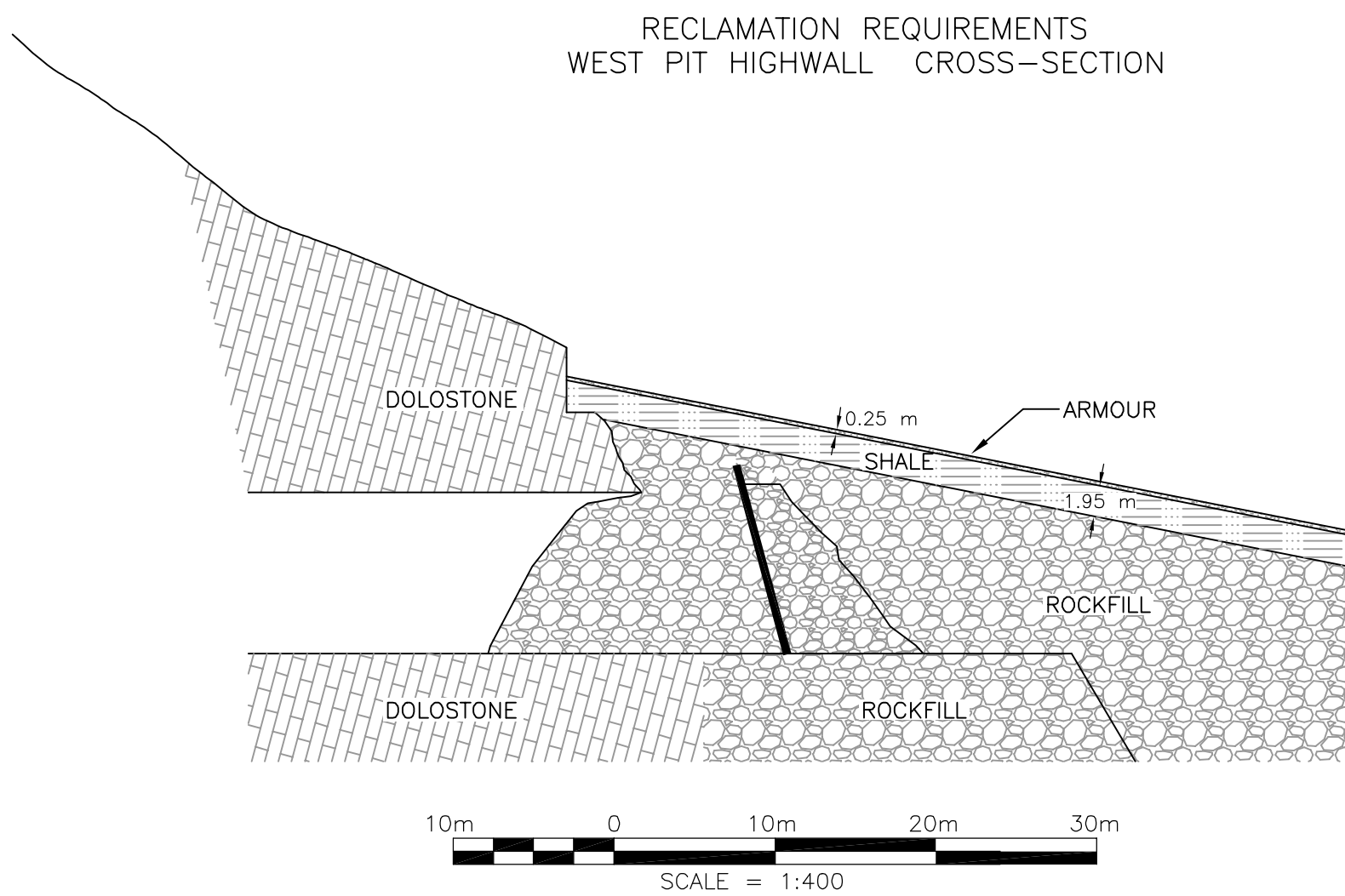
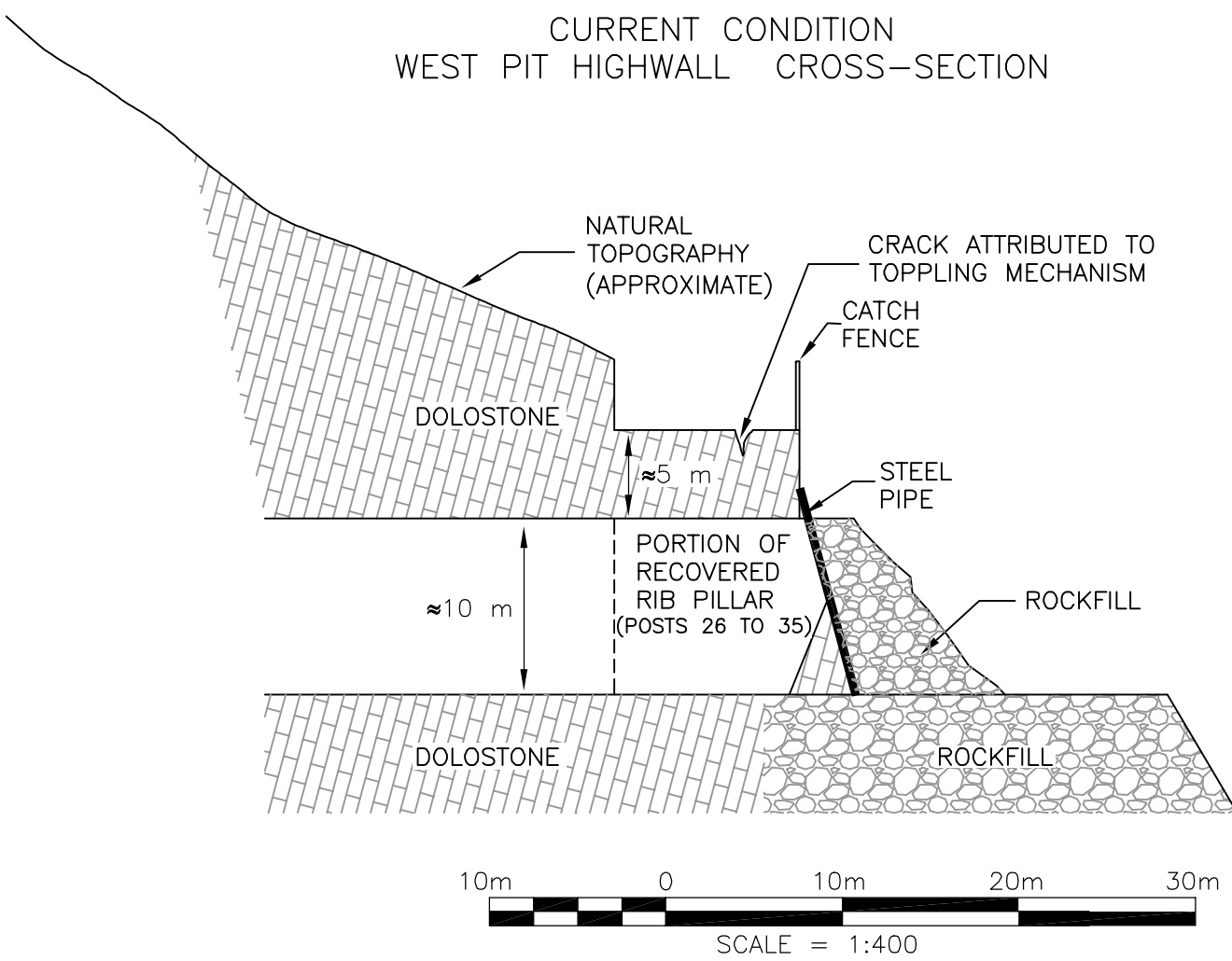
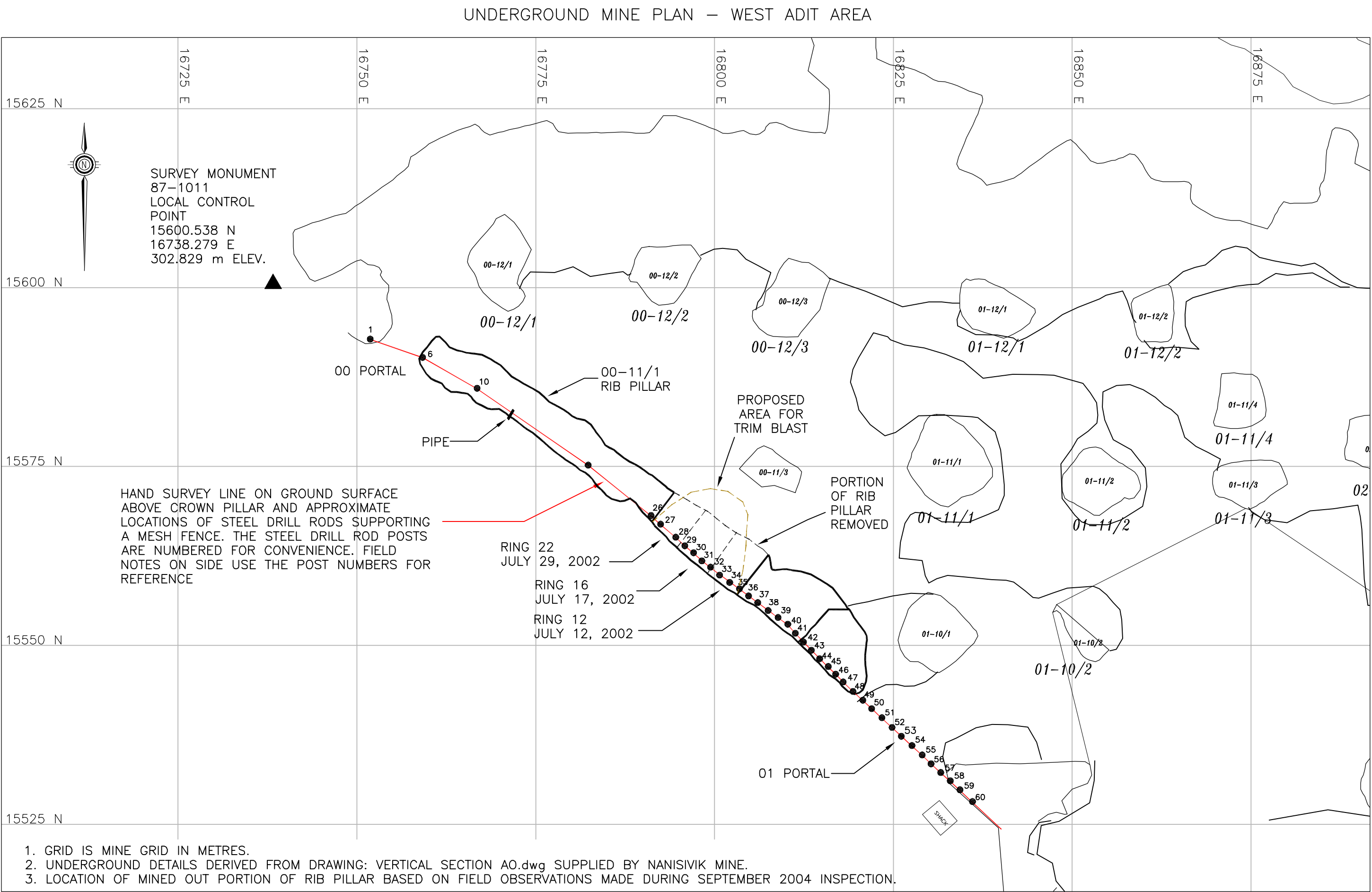
PHOTO 2 – JULY 2004 (VIEW LOOKING EAST)
BENCH ABOVE WEST OPEN PIT HIGHWALL.
NOTE THE LONGITUDINAL CRACK RUNNING PARALLEL TO THE HIGHWALL MARKED OUT BY ORANGE STAKES.



PHOTO 3 – JULY 2004 (VIEW LOOKING NORTH)
ROCKFILL PLACED AGAINST STEEL PIPES LAID AGAINST THE OUTSIDE OF WEST OPEN PIT HIGHWALL ADJACENT TO 01 PORTAL.



PHOTO 4 – SEPTEMBER 2004 (VIEW LOOKING SOUTH)
VIEW OF REMOVED PORTION OF RIB PILLAR FROM UNDERGROUND.
NOTE THE STEEL PIPES VISIBLE BY THE FROST COVER ON THE PIPES NEAR THE TOP OF THE EXCAVATION. THE PIPES RETAIN THE ROCKFILL PLACED AGAINST THE OUTSIDE FACE OF THE HIGHWALL.



RECLAMATION WORK PRESCRIPTION:

1. TRIM BLAST THE SOUTHWEST EDGE OF THE CROWN PILLAR OVER AN APPROXIMATE 12 m LENGTH.
2. CHECK SCALE THE EXPOSED EDGE OF THE CROWN PILLAR AFTER THE TRIM BLAST.
3. USE A DOZER TO PUSH A RAMP ACROSS THE WASTE ROCK AND STEEL PIPES TO OPEN ACCESS INTO THE STOPE.
4. PUSH FILL INTO THE STOPE AS FAR AS POSSIBLE WITHOUT THE OPERATOR PASSING UNDER THE CROWN PILLAR.
5. RAMP FILL ACROSS THE REMAINING HIGHWALL AND COMPLETION OF THE PRECEDING TASK.

CLIENT:
NANISIVIK MINE, A DIVISION OF CANZINCO LTD.

AS A MUTUAL PROTECTION TO OUR CLIENT, THE PUBLIC AND OURSELVES, ALL REPORTS AND DRAWINGS ARE SUBMITTED FOR THE CONFIDENTIAL INFORMATION OF OUR CLIENT FOR A SPECIFIC PROJECT AND AUTHORIZATION FOR USE AND/OR PUBLICATION OF DATA, STATEMENTS, CONCLUSIONS OR ABSTRACTS FROM OR REGARDING OUR REPORTS AND DRAWINGS IS RESERVED PENDING OUR WRITTEN APPROVAL.

REV.	DATE	REVISION NOTES	DRAWN	CHECKED	APPROVED

SCALE:	AS SHOWN
DATE:	JAN 2005
DRAWN:	CJT
DESIGNED:	KWS
CHECKED:	CKC
APPROVED:	JWC

PROJECT		MINE OPENINGS CLOSURE PLAN	
TITLE		WEST ADIT AREA RECLAMATION REQUIREMENTS	
PROJECT No.	0255-009-10.03	DWG. No.	28
		REV.	0