

- LEGEND:
- EXISTING GROUND
 - EXTENT OF FILL
 - MINED SURFACE

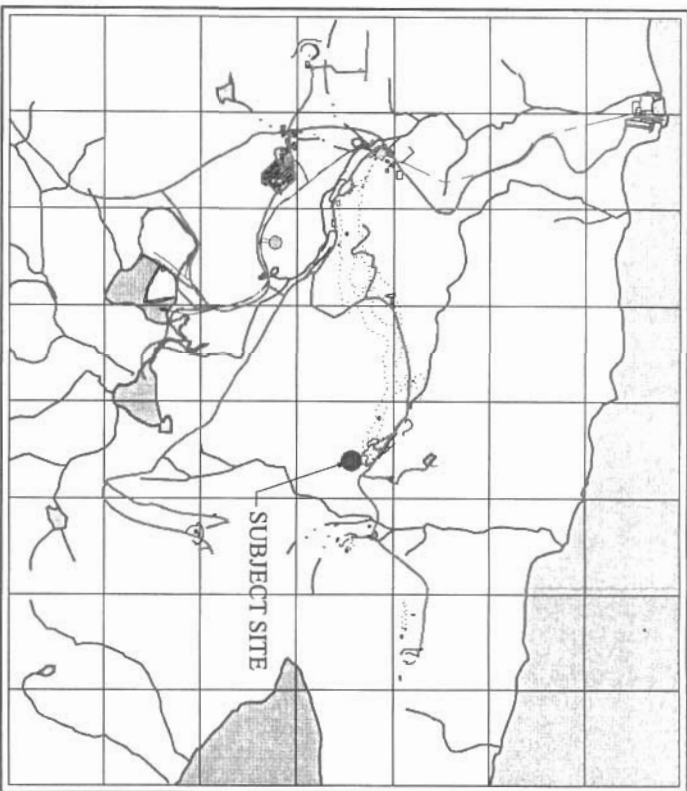
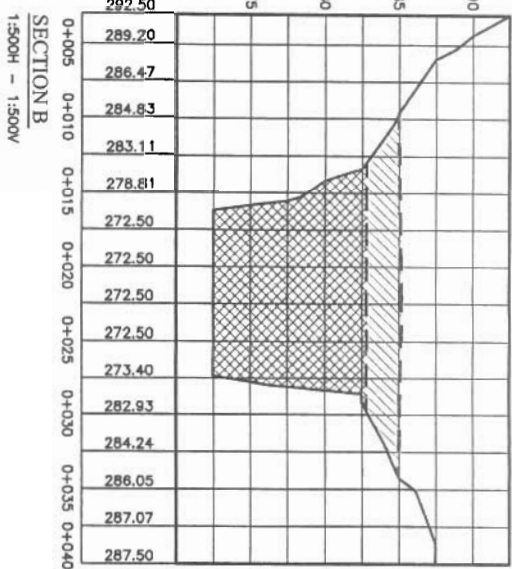
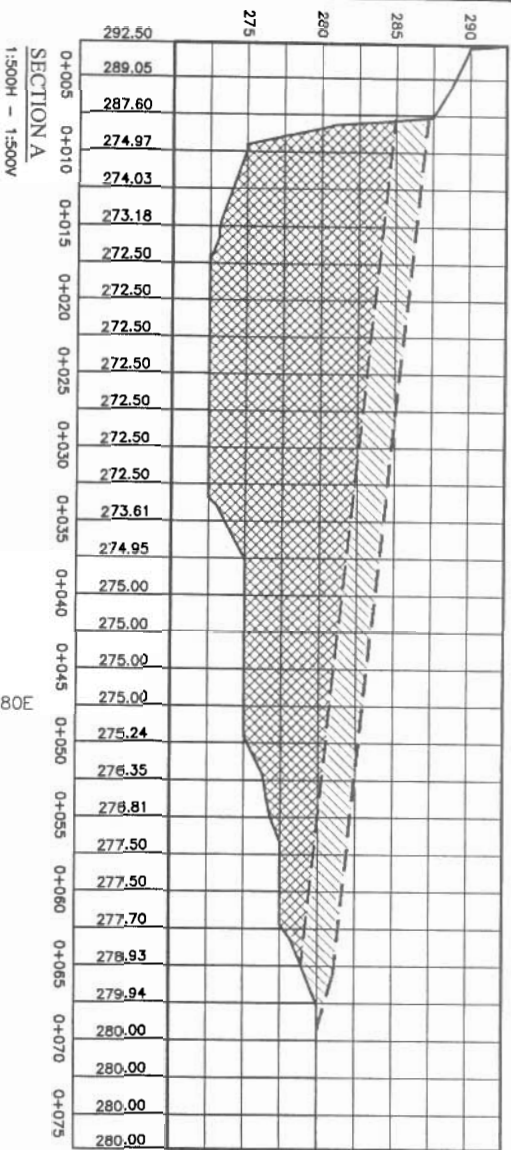
NOTE:
CORRELATION BETWEEN CURRENT AND MINED
SURFACES APPROXIMATE

SOURCE OF DRAWING:
DATA COMPILED FROM FILES RECEIVED FROM
NANISIVIK MINE AND SURVEYS CONDUCTED BY
SUB-ARCTIC SURVEYS LTD.

DRAWING INFORMATION:	
REVIEWED BY:	EJD
DRAWN BY:	CCL
DATE ISSUED:	FEB 2004
PROJECT NUMBER:	23-635
FILE NAME:	23635-8F-12.DWG
REVISION:	0

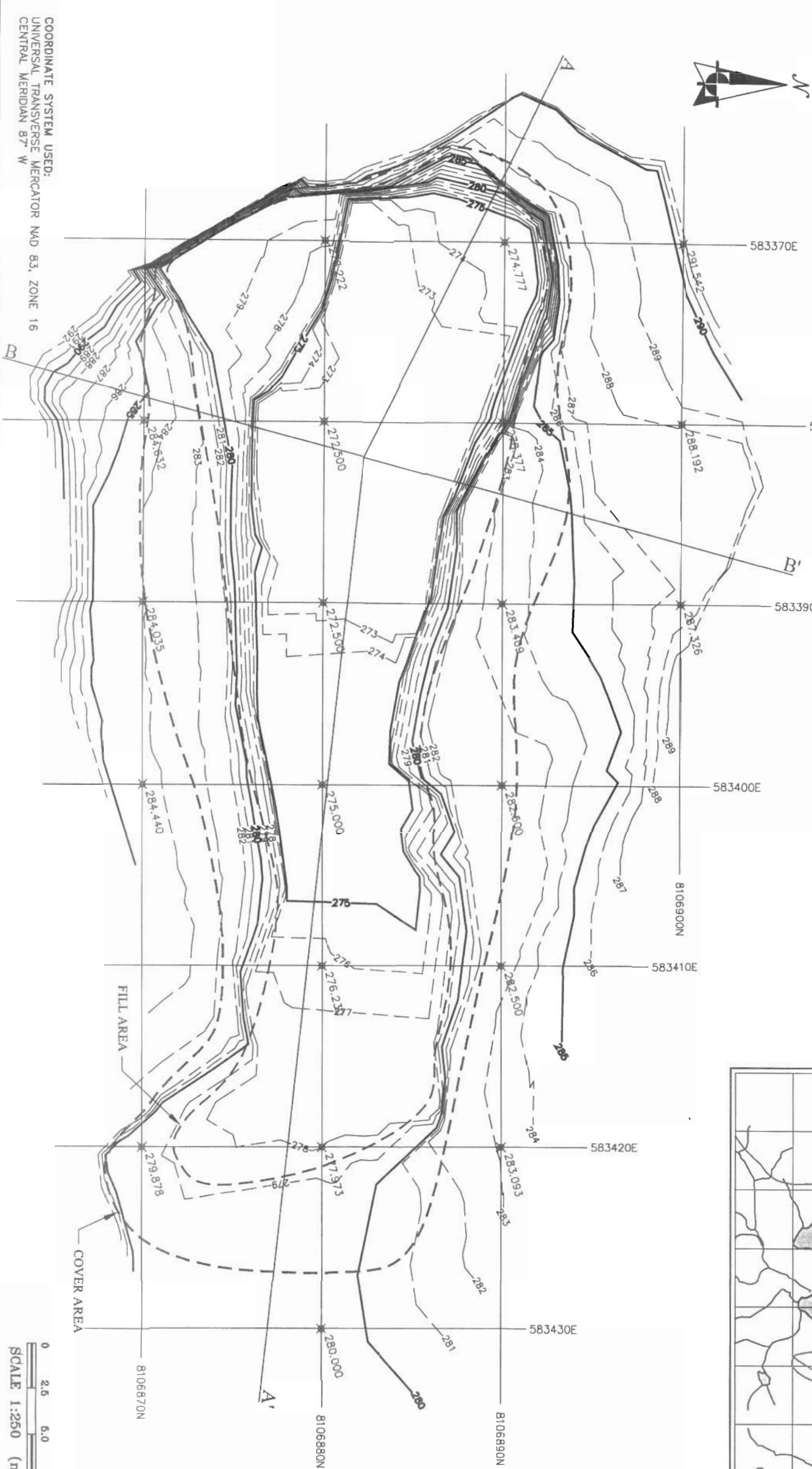
Project: ROCK PILES AND OPEN PITS CLOSURE PLAN
Location: NANISIVIK MINE, NUNAVUT
Client: CanZinco Ltd.

EAST ADIT AREA - SECTION 'G'



LEGEND:

- EXTENT OF COVER
- EXTENT OF FILL
- CONTOUR - MAJOR
- CONTOUR - MINOR
- GRID LINE
- SPOT ELEVATION



SOURCE OF DRAWING:

DATA COMPILED FROM FILES RECEIVED FROM NANISVIK MINE AND SURVEYS CONDUCTED BY SUB-ARCTIC SURVEYS LTD.

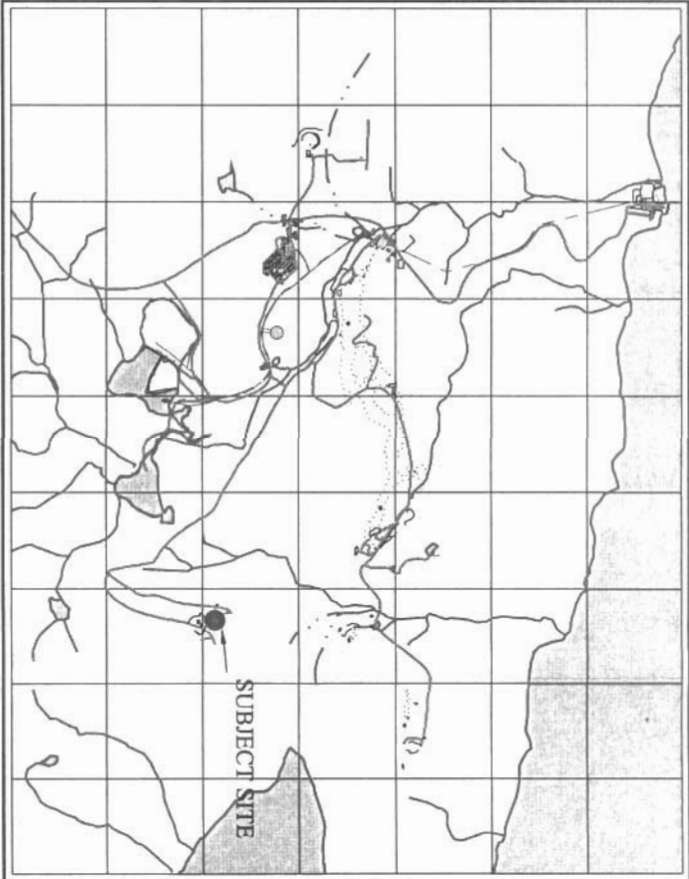
DRAWING INFORMATION:

REVIEWED BY: EJD
DRAWN BY: CCL
DATE ISSUED: FEB 2004
PROJECT NUMBER: 23-635
FILE NAME: 23635-BF-13.DWG
REVISION: 0

Project: ROCK PILES AND OPEN PITS CLOSURE PLAN
Location: NANISVIK MINE, NUUNAVUT
Client: CanZinco Ltd.

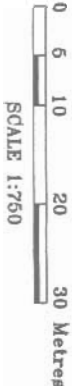
EAST TRENCH DETAIL





- LEGEND:
- EXTENT OF COVER
 - EXTENT OF FILL
 - MAJOR CONTOUR
 - MINOR CONTOUR
 - GRID LINE
 - SPOT ELEVATION

COORDINATE SYSTEM USED:
LOCAL MINE GRID



SOURCE OF DRAWING:
DATA COMPILED FROM FILES RECEIVED FROM
NANISIVIK MINE AND SURVEYS CONDUCTED BY
SUB-ARCTIC SURVEYS LTD.

DRAWING INFORMATION:
REVIEWED BY: EJD
DRAWN BY: CCL
DATE ISSUED: FEB 2004
PROJECT NUMBER: 23-635
FILE NAME: 23635-8F-15.DWG
REVISION: 0

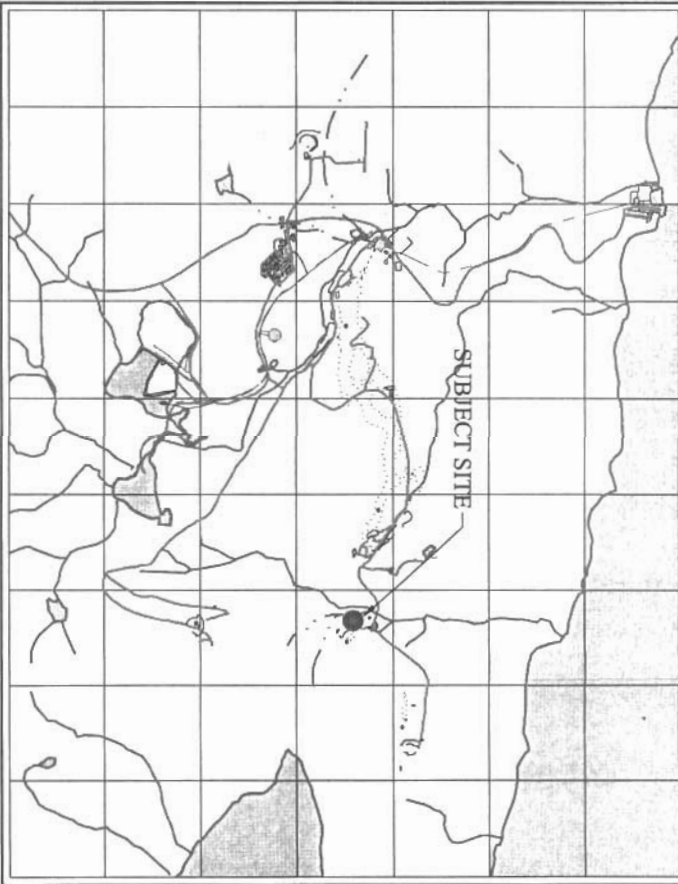
Project: ROCK PILES AND OPEN PITTS CLOSURE PLAN
Location: NANISIVIK MINE, NUNAVUT
Client: CanZimco Ltd.

AREA 14 DETAIL



Garthner Lee

Figure No.



LEGEND:

- CONTOUR - MAJOR
- CONTOUR - MINOR
- GRID LINE
- SPOT ELEVATION

SOURCE OF DRAWING:

DATA COMPILED FROM FILES RECEIVED FROM NANISVIK MINE AND SURVEYS CONDUCTED BY SUB-ARCTIC SURVEYS LTD.

DRAWING INFORMATION:
REVIEWED BY: EJD
DRAWN BY: CCL
DATE ISSUED: FEB 2004
PROJECT NUMBER: 23-635
FILE NAME: 23635-BF-16.DWG
REVISION: 0

Project: ROCK PILES AND OPEN PITS CLOSURE PLAN

Location: NANISVIK MINE, NUNAVUT

Client: CanZinco Ltd.

K-BASELINE DETAIL

Appendices



Appendix A

**BGC Eengineering Inc. Memorandum - Results of Geotechnical
Drilling and Geothermal Monitoring at East and West Open Pits,
February 4, 2004**





BGC ENGINEERING INC.

AN APPLIED EARTH SCIENCES COMPANY

1605, 840 – 7 Avenue S.W. , Calgary, Alberta, Canada. T2P 3G2

Phone (403) 250-5185 Fax (403) 250-5330

PROJECT MEMORANDUM

To:	Gartner Lee Ltd.	Fax No.:	Via email
Attention:	Eric Denholm	CC:	
From:	Geoff Claypool (Ext. 104)	Date:	February 4, 2004
Subject:	Results of Geotechnical Drilling and Geothermal Monitoring at East and West Open Pits		
No. of Pages (including this page):	8	Project No:	0255-008-06

This memorandum has been prepared to summarize the results of geotechnical drilling and results of geothermal monitoring at the East and West Open pits conducted in 2003.

In May 2003, Mr. Gerry Ferris, P.Eng. of BGC Engineering Inc. supervised a geotechnical drilling program to observe the subsurface ground conditions at various locations around the Nanisivik Mine site. As part of the investigation one borehole was drilled at each of the East and West Open Pits. The purpose of the investigation was to determine the current geothermal regime within the pits.

The borehole at the East Open Pit (BGC03-29) was drilled near the crest of the pit, proximal to the former portal location. Borehole BGC03-29 encountered bedrock from surface. The borehole was terminated in rock at a depth of 10.7 m. No information regarding lithology or rock quality was documented.

The borehole at the West Open Pit (BGC03-30) was drilled from the bottom of the pit, near Portal 01. Borehole BGC03-30 encountered approximately 5.5 m of waste rock overlying bedrock. The borehole was terminated in rock at a depth of 10.7 m. No information regarding lithology or rock quality was documented.

No samples were collected from either of the boreholes and, therefore, no lab testing was completed.

This communication is intended for the use of the above named recipient. Any unauthorized use, copying, review or disclosure of the contents by other than the recipient is prohibited.

N:\Projects\0255 CanZinco\008 2003 Geotech. Services\06 Cover design\Open Pit Memo.doc

BGC Project Memorandum

To: Eric Denholm – Gartner Lee Ltd.

From: Geoff Claypool – BGC Engineering Inc.

Date: February 4, 2004

Subject: Results of Geotechnical Drilling and Geothermal Monitoring of East and West Open Pits

Proj. No: 0255-008-06

Regular monitoring of the geothermal instruments has been ongoing since May 2003. The results of the monitoring are illustrated graphically on the attached thermocouple plots. The monitoring data verifies the field observations made in 2003 that permafrost conditions exist in the area of both open pits. Ground temperatures at depth are approximately -10°C . The available monitoring data indicates that the base of the active layer is approximately 0.75 m below ground surface in the native ground located at the East Open Pit and 3.25 m below ground surface in the waste rock located in the West Open Pit.

This memo has been developed to summarize the results of the geotechnical investigations conducted in the east and west open pits in May 2003. Should you have any questions or comments regarding any of the information presented in this memo please do not hesitate to contact the undersigned.

BGC Engineering Inc.

Per:



Geoff Claypool, B.Sc., P.Eng. (AB)
Geological Engineer

This communication is intended for the use of the above named recipient. Any unauthorized use, copying, review or disclosure of the contents by other than the recipient is prohibited.

DRILL HOLE # BGC03-29

Page 1 of 2

Date Drilled: May 27, 2003

Contractor & Rig: Mine's Diamond Drill

Drill Method: BQ Chilled Brine Coring

Hammer Type: N/A

Location: East Open Pit

Elevation: 304 m (approx.)

Co-ord: 8107127N, 583183E (UTM-NAD83) (approx.)

Logged by: N/A

Project No. 0255-008-03

Reviewed by: J. Cassie

Notes: No Logging by BGC

Depth (m)	SOIL DESCRIPTION	Core Run	Recovery	Moisture Content %				Installation / Backfill		Depth (m)
				Wp	X	WI				
0	Ground Surface 304.0									0
0	BEDROCK 0.0									0
1	Driller noted bedrock from surface, based on drill response.									1
2										2
3										3
4										4
5										5
6										6
7										7
8										8
9										9
10										10

Wooden surface protective box installed.

Stick-up of 0.39 m

T/C node @ 1.23 m

Backfilled with shale and bentonite

T/C node @ 3.23 m

25 mm solid PVC

T/C node @ 5.23 m

T/C node @ 7.73m



BGC ENGINEERING INC.

AN APPLIED EARTH SCIENCES COMPANY

Calgary, AB

Phone (403) 250-5185

CLIENT: Nanisivik Mine, a Division of CanZinco Ltd.

PROJECT: Geotechnical Investigation

Final Depth: 10.9 m

DRILL HOLE # BGC03-29

Page 2 of 2

Date Drilled: May 27, 2003
 Contractor & Rig: Mine's Diamond Drill
 Drill Method: BQ Chilled Brine Coring
 Hammer Type: N/A

Location: East Open Pit
 Elevation: 304 m (approx.)
 Co-ord: 8107127N, 583183E (UTM-NAD83) (approx.)
 Logged by: N/A

Project No. 0255-008-03
 Reviewed by: J. Cassie
 Notes: No Logging by BGC

Depth (m)	SOIL DESCRIPTION	Core Run	Recovery	Moisture Content %				Installation / Backfill		Depth (m)
				Wp	X	WI				
				10	20	30	40			
11	End of Borehole									11
12										12
13										13
14										14
15										15
16										16
17										17
18										18
19										19
20										20

293.1
10.9

T/C node @ 10.9 m



BGC ENGINEERING INC.
 AN APPLIED EARTH SCIENCES COMPANY
 Calgary, AB Phone (403) 250-5185

CLIENT: Nanisivik Mine, a Division of CanZinco Ltd.
 PROJECT: Geotechnical Investigation
 Final Depth: 10.9 m

Page 1 of 2

Logged by: N/A

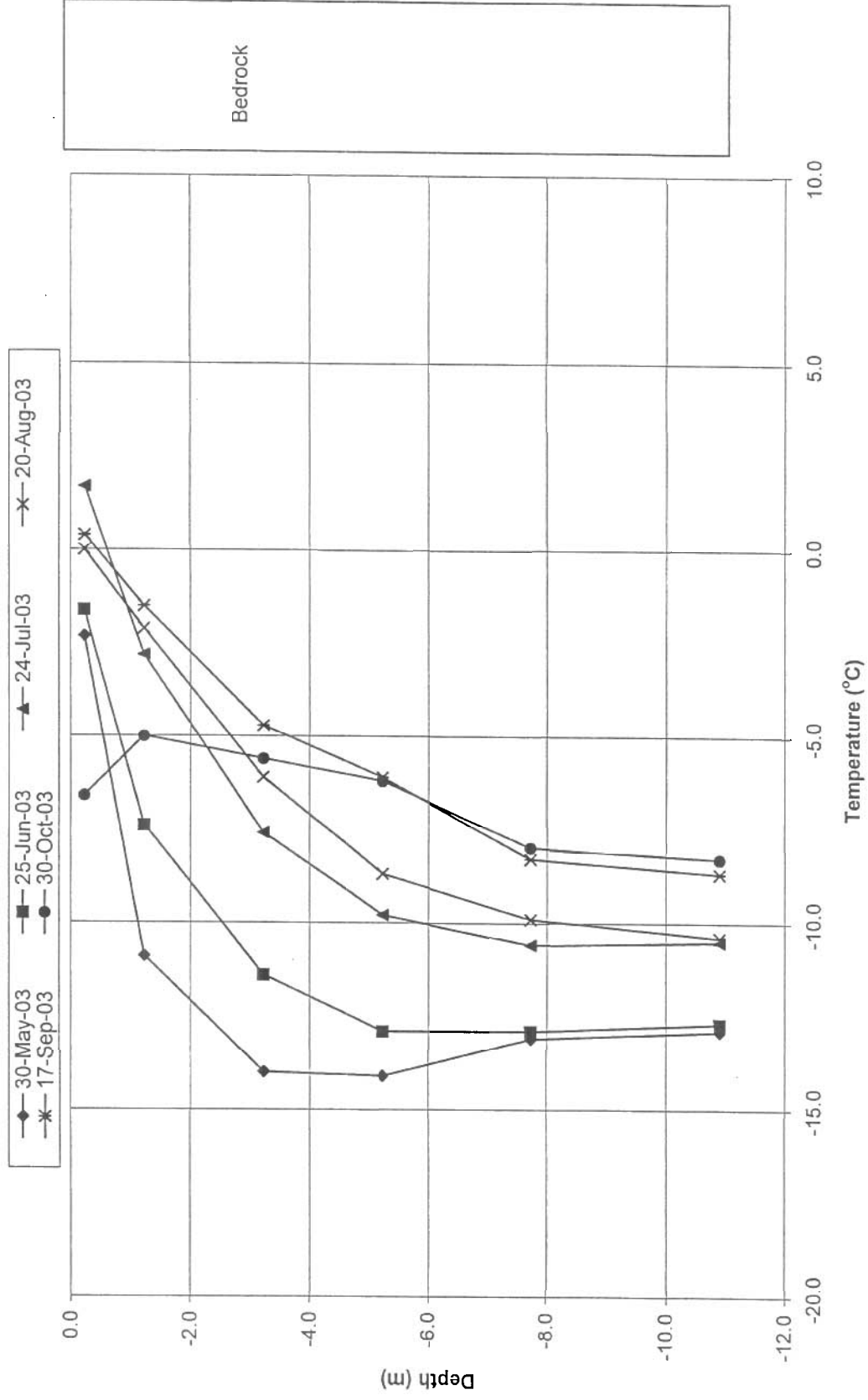


Final Depth: 10.7 m

Project No. 0255-008-03
Reviewed by: J. Cassie
Notes: No logging by BGC

CLIENT: Nanisivik Mine, a Division of CanZinco Ltd.
PROJECT: Geotechnical Investigation
Final Depth: 10.7 m

Geothermal Monitoring East Open Pit Thermocouple BGC03-29



Geothermal Monitoring West Open Pit Thermocouple BGC03-30

