

APPENDIX D

RECORD OF DEBRIS

PLACEMENT INTO

LITTLE RED DOG QUARRY LANDFILL

PLACEMENT OF DEBRIS INTO LRD QUARRY LANDFILL

2nd QUARTER, 2003

DRAWING OF WASTE PLACEMENT

The following drawing indicates the areas where debris was placed each month during the 2nd quarter of 2003 (April 1, 2003 to June 30, 2003). The locations represent the final placement locations and not temporary staging areas. The drawing also includes locations of debris place prior to the beginning of the quarter where the debris was placed at the same elevation in the pit.

This drawing represents the Second Lift (L2) of debris in the pit. The Second Lift of the debris is being placed into Bench 6 of LRD Quarry. The drawing indicates a different colour for each lift, year, and month that the debris was placed. For example 'L2 – 2003 – 05' represents Lift 2, for the month of May, 2003.

RECORD OF WASTE SOURCE/VOLUME & TYPE

Following the diagram are records from each month showing the source of the debris, where it was placed, the quantity and the type of debris.

VERIFICATION OF HYDROCARBON REMOVAL

Stationary and Mobile Equipment usually contain sources of hydrocarbons such as lubrication oils, fuels, greases and/or hydraulic oil. Attached to this appendix are signoff sheets indicating equipment that contained hydrocarbons were cleaned and/or drained of the hydrocarbons. After the equipment was drained and/or cleaned, they were inspected by our prime contractor, the demolition subcontractor and an owner representative. Each representative signs the inspection sheet once it has been verified that the equipment has been adequately drained. The only equipment prepared during this quarter relates to the power house facilities on the barge.

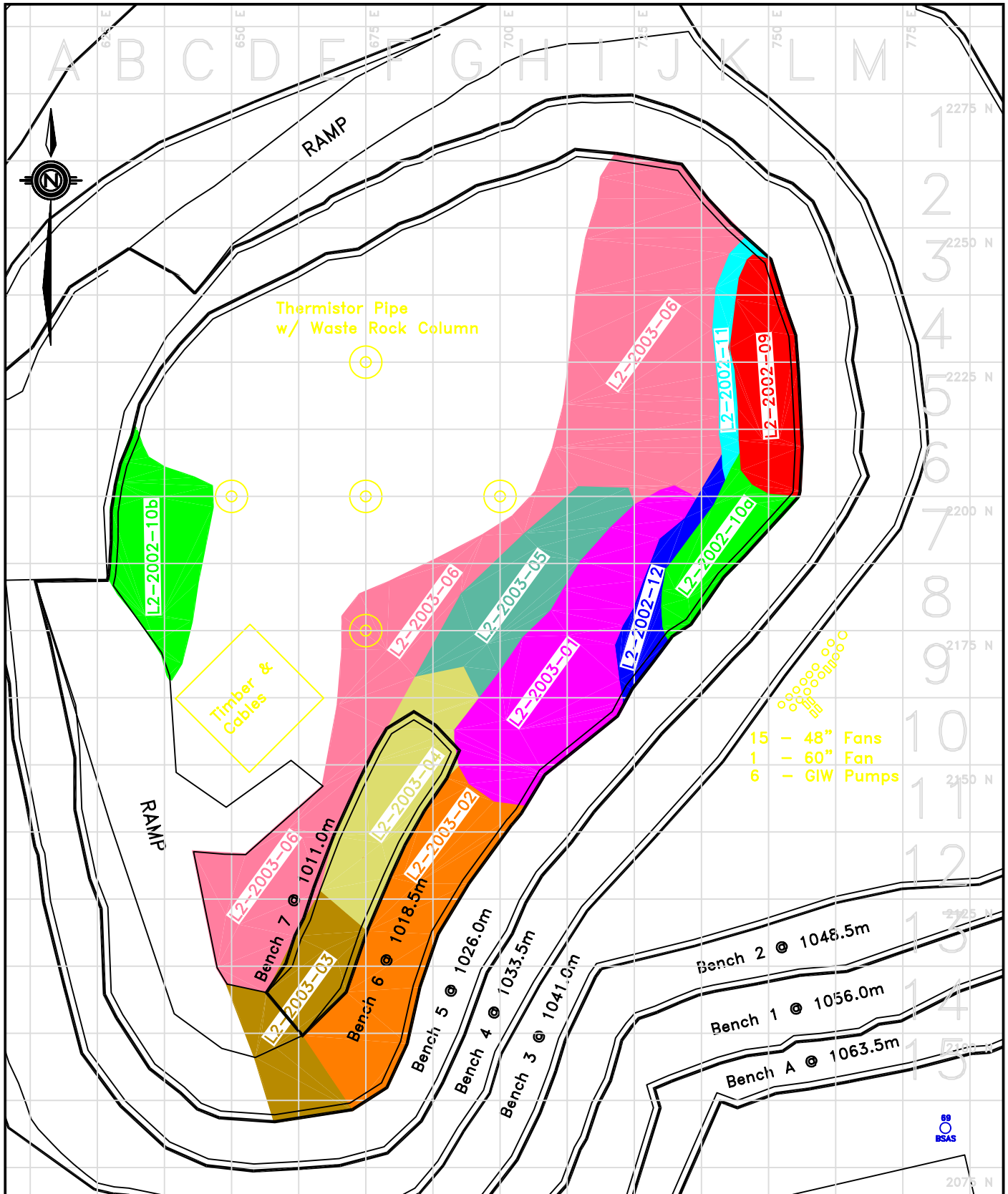
PHOTOGRAPHIC RECORD

As specified in the Closure Plan, a photographic record of debris placement is being maintained. Attached to this appendix are pictures of typical debris being placed in LRD Quarry.

The weather was too cold for the hydraulic shearers and bailer to function properly until May. Debris shown has been further processed using the bailer for siding and shearers for heavier steel prior to final burial.

The pictures are included in chronological order. Comments related to some of the pictures are as follows:

Date	Comment
2003 05 09	Secondary shearing of debris is underway
2003 05 20	The trailer mounted bailing machine is now in operation
2003 05 30	Temporary stock piles have separated out some different material types into separate piles for easier handling/cutting up prior to burial
2003 06 01	Note the pipes in the picture. These are return lines and not tailings lines. Tailings lines are being disposed of underground as per the Closure Plan.
2003 06 01	Note the large cylindrical ball mills. They are made of heavy walled steel and are difficult to cut into small pieces.
2003 06 14	The ball mills have been placed on end with one end cut off. This will allow filling of them so there are no voids caused when they are buried.
2003 06 24	Melting of snow and rain starting to cause water to pond in the quarry. This is helping to fill voids within the fill and will quickly freeze along with the landfill.



POLARIS PROJECT



LRD Quarry — LIFT 02 Demolition Debris Placement

DRAWN BY: TSF

SCALE: 1:1000

DATE: June 30, 2003

DWG #:

Polaris Mine Decommissioning and Reclamation Project

Daily Disposal Record For 2nd Quarter 2003

Structural Steel/Concrete/Building Components

Date	Origin location	Disposal Location	Disposal Location Details	Quantity (m3)	Remarks
04-Apr-03	Barge	L.R.D.	Bench 5 (B13-B14)	500	Concrete from barge demolition.
04-Apr-03	Barge	L.R.D.	Bench 6	50	Steel from demolitiom of the ball mill
18-Apr-03	Barge	L.R.D.	bench 6(H7)	100	ball mill
18-Apr-03	Barge	L.R.D.	bench 6 (G10)	20	steel
28-apr-03	Barge	L.R.D.	Bench 6 (D13)	75	(6 loads)Concrete
29-apr-03	Barge	L.R.D.	Bench 6 (D13)	240	(14 loads) Concrete
29-apr-03	Barge	L.R.D.	Bench 6 (G9)	20	(2 loads) Steel
May 1, 03	Burn Pit	L.R.D.	Bench 6 (J4-I5)	165	(11 loads) steel + wood
May 2, 03	Barge	L.R.D.	Bench 6 (H8-J7)	105	(7 loads) steel
May 3, 03	Barge	L.R.D.	Bench 6 (F9-H8)	315	(21 loads) steel
May 8, 03	Barge	L.R.D.	Bench 6 (G5-6)	25	(1 load) rubber + steel
May 11, 03	Barge	L.R.D.	Bench 6 (G5-6)	20	(1 load) steel
May 11, 03	Thickener	L.R.D.	Bench 6 (G5-6)	30	(2 loads) steel
May 13, 03	Barge	L.R.D.	Bench 6 (F13-14)	40	(2 loads) steel
May 13, 03	Barge	L.R.D.	Bench 6 (F13-14)	140	(7 loads) steel
May 17, 03	Barge	L.R.D.	Bench 6	24	Steel
May 19, 03	Barge	L.R.D.	Bench 6	324	Steel
May 20, 03	Barge	L.R.D.	Bench 6	142	Steel
May 21, 03	Barge	L.R.D.	Bench 6	284	Steel
May 22, 03	Barge	L.R.D.	Bench 6	145	Steel
May 22, 03	Barge	Burn Pit	Bench 6	80	Steel
23-May-03	Storage	L.R.D.	Bench 6	110	Steel
24-May-03	Storage	L.R.D.	Bench 6	140	Steel
25-May-03	Storage	L.R.D.	Bench 6	130	Steel
25-May-03	Barge	L.R.D.	Bench 6	15	Steel
27-May-03	Storage	L.R.D.	Bench 6	168	Steel
28-May-03	Barge	L.R.D.	Bench 6	30	Steel
28-May-03	Storage	L.R.D.	Bench 6	162	Steel
29-May-03	Barge	L.R.D.	Bench 6	534	Steel
30-May-03	Barge	L.R.D.	Bench 6	478	Steel
29-May-03	Barge	L.R.D.	Bench 6	534	Steel
30-May-03	Barge	L.R.D.	Bench 6	478	Steel
31-May-03	Storage building	L.R.D.	Bench 6	64	Steel
31-May-03	Barge	L.R.D.	Bench 6	250	Steel

Polaris Mine Decommissioning and Reclamation Project

Daily Disposal Record For 2nd Quarter 2003

Structural Steel/Concrete/Building Components

Date	Origin location	Disposal Location	Disposal Location Details	Quantity (m3)	Remarks
01-Jun-03	Barge	L.R.D.	Bench 6	296	Steel
01-Jun-03	Storage building	L.R.D.	Bench 6	120	Steel
02-Jun-03	Barge	L.R.D.	Bench 6	230	Steel
03-Jun-03	Barge	L.R.D.	Bench 6	78	Steel
June 04-03	Barge	L.R.D.	Bench 6	420	Steel
June 5,03	Storage Building	L.R.D.	Bench 6	315	Steel
June 6,03	Storage Building	L.R.D.	Bench 6	255	Steel
June 6,03	Barge	L.R.D.	Bench 6	255	Steel
June 7,03	Storage Building	L.R.D.	Bench 6	75	Steel
June 7,03	Barge	L.R.D.	Bench 6	270	Steel
June 7,03	Foldaway	L.R.D.	Bench 6	30	Steel
	Note - material taken to burn pit was then transerred to LRD				
TOTAL DEBRIS TAKEN TO LRD QUARRY				8,281	

STATIONARY EQUIPMENT LUBRICANT EVACUATION CHECKLIST

Cominco Polaris Minesite Demolition and Reclamation Project
Daily Activity Log and Disposal Record

SNC-LAVALIN
Engineers & Constructors

Date	Origin Location	Equipment Description	Lubricant/Fluid Type	Quantity If Appl.	Disposal Location	Sub-Contractor	SLC	Owner/Rep
	BARGE POWER House	141-CK-01 Heat dump	Glycol		Future Incineration	Jh	PS	Real
	"	141-CK-02 " "	"		" "	Jh	PS	Real
	"	141-CK-03 " "	"		" "	Jh	PS	Real
	"	141-CK-04 " "	"		" "	Jh	PS	Real
	"	141-CK-05 " "	"		" "	Jh	PS	Real
	"	141-CK-06 Heat dump	"		" "	Jh	P.S	Real
	BARGE	144-TK-01 Fuel tank	Diesel Fuel		" "	Jh	PS	Real
	"	144-TK-02 " "	" "		" "	Jh	PS	Real
	"	AIR Handler 241-AH-01 unit	Glycol		" "	Jh	PS	Real
	"	241-AH-02 " "	"		" "	Jh	PS	Real
	"	241-AH-03 " "	"		" "	Jh	PS	Real
	"	241-AH-06 " "	"		" "	Jh	PS	Real
	"	Diesel Fuel 241-PP-01 Supply Pump	Diesel Fuel		" "	Jh	PS	Real
	"	241-PP-02 " "	" "		" "	Jh	PS	Real
	"	241-PP-03 " "	" "		" "	Jh	PS	Real

NOTE - SNC Records indicate this work was done
Between April 12-2003 and May 12, 2003.

\\freezy\snc\insert directory and file name here.xls

- ONCE THE INDIVIDUALS WHO DID THE WORK ARE BACK ON SITE, WILL GET MORE INFO

STATIONARY EQUIPMENT LUBRICANT EVACUATION CHECKLIST

Cominco Polaris Minesite Demolition and Reclamation Project
Daily Activity Log and Disposal Record

SNC-LAVALIN
Engineers & Constructors

Date	Origin Location	Equipment Description	Lubricant/Fluid Type	Quantity If Appl.	Disposal Location	Sub-Contractor	SLEC	Owner/Rep
	BARGE Power House	Domestic HOT WATER Dump 241-PP-08	Gear box oil		Future Incineration	Jh	PS	hal
	" "	241-PP-09	" " "		" "	Jh	PS	hal
	" "	241-PP-10	" " "		" "	Jh	PS	hal
	" "	241-PP-11	" " "		" "	Jh	PS	hal
	" "	241-PP-12	Gear box oil		" "	Jh	PS	hal
	" "	HEATING WATER REC'D PUMP 241-PP-15	" " "		Future Incineration	Jh	PS	hal
	" "	241-PP-16	" " "		" "	Jh	PS	hal
	" "	Compressed AIR RECEIVER 241-RE-01	oil		" "	Jh	PS	hal
	" "	241-RE-02	"		" "	Jh	PS	hal
	" "	FUEL OIL DRIP TANK 241-TK-04	Diesel Fuel		" "	Jh	PS	hal
	" "	HOT water TANK 241-TK-07						
	" "	241-TK-08	"					
	" "	HOT water Expansion TANK 241-TK-15						
	" "	241-TK-20	"					
	" "	241-TK-21	"					

\\freezy\snc\insert directory and file name here.xls

SEE SHEET. ① B

Apr 12/03 to May 12/03

STATIONARY EQUIPMENT LUBR. INT EVACUATION CHECKLIST

Cominco Polaris Minesite Demolition and Reclamation Project
Daily Activity Log and Disposal Record

Date	Origin Location	Equipment Description	Lubricant/Fluid Type	Quantity If Appl.	Disposal Location	Sub-Contractor	SLEC	Owner/Rep
	BARGE POWER HOUSE	GLYCOL Solution 241-TK-23 TANK	GLYCOL		FUTURE Incineration	44	PS	Real
	"	MAK Diesel 24A-GE-01 Generator	LUBE OIL		"	46	PS	Real
	"	24A-GE-02 "	LUBE OIL		"	44	PS	Real
	"	24A-GE-03 "	LUBE OIL		"	44	PS	Real
	"	24A-GE-04 "	LUBE OIL		"	44	PS	Real
	"	Diesel Fuel Transfer 24A-PP-07 Pump	LUBE OIL Diesel Fuel		"	44	PS	Real
	"	24A-PP-08 "	LUBE OIL Diesel Fuel		"	44	PS	Real
	"	LUBE OIL Priming 24A-PP-09 Pump	GEAR OIL BOX		"	44	PS	Real
	"	24A-PP-10 "	" "		"	44	PS	Real
	"	24A-PP-11 "	" "		"	44	PS	Real
	"	24A-PP-12 "	" "		"	44	PS	Real
	"	SEPARATOR LUBE OIL 24A-PP-13 Pump	" "		"	44	PS	Real
	"	SEPARATOR Sludge 24A-PP-14 Pump	GEAR OIL BOX		"	44	PS	Real
	"	ENGINE HOT COOLING 24A-PP-15 WATER PUMP	" "		"	44	PS	Real
	"	Diesel Cooling water 24A-PP-17 Pump	" "		"	44	PS	Real
	"	24A-PP-18 "	" "		"	44	PS	Real

See Sheet D.

Apr 12/03 to May 12/03

STATIONARY EQUIPMENT LUBRICANT EVACUATION CHECKLIST



Cominco Polaris Minesite Demolition and Reclamation Project
Daily Activity Log and Disposal Record

SNC-LAVALIN
Engineers & Constructors

Date	Origin Location	Equipment Description	Lubricant/Fluid Type	Quantity If Appl.	Disposal Location	Sub-Contractor	SLEC	Owner/Rep
	BARCE POWER HOUSE	Compressor STARTING AND RECEIVERS 244-RE-01	OIL GEAR BOX		FUTURE Incineration	Jay	PS	hnd
	"	244-RE-02	"	"	"	Jay	PS	hnd
	"	Oil Separator 244-SP-01	"	"	"	Jay	PS	hnd
	"	Fuel Separator 244-SP-02	DIESEL GEAR BOX OIL		"	Jay	PS	hnd
	"	Separator Sludge 244-TK-05 TANK	Sludge GEAR BOX OIL		"	Jay	PS	hnd
	"	STARTING Receiver 244-TK-06 TANK	oil		"	Jay	PS	hnd
	"	244-TK-07	"	"	"	Jay	PS	hnd
	"	Cooling water Expansion 244-TK-08 TANK			"	Jay	PS	hnd
	"	Emergency Starting Fuel 244-TK-01 TANK	Diesel Fuel		"	Jay	PS	hnd

See SHEET ①.
Apr 12/03 to May 12/03

\\freezy\snc\insert directory and file name here.xls























2003 05 20 16:47



























