

APPENDIX 9

RECORD OF DEBRIS PLACED INTO LITTLE RED DOG QUARRY LANDFILL

PLACEMENT OF DEBRIS INTO LRD QUARRY LANDFILL

3rd QUARTER, 2003

DRAWING OF WASTE PLACEMENT

The following two drawings indicate the areas where debris was placed each month during the 3rd quarter of 2003 (July 1, 2003 to September 30, 2003). The locations represent the final placement locations and not temporary staging areas. The drawing also includes locations of debris placed prior to the beginning of the quarter where the debris was placed at the same elevation in the quarry.

The drawings represent the Second Lift (L2) and Third Lift (L3) of debris in the quarry. Both of these lifts are being placed into Bench 6 of Little Red Dog Quarry Landfill ('LRDQL'). The drawing indicates a different colour for each month that the debris was placed. However, note that September 2002 and 2003 both use the colour Red. However each area is dated, for example 'L2 – 2003 – 05' represents Lift 2, for the month of May, 2003.

RECORD OF WASTE SOURCE/VOLUME & TYPE

Following the placement drawings are records from each month showing the source of the debris, where it was hauled to, the quantity and the type of debris.

VERIFICATION OF HYDROCARBON REMOVAL

There was no equipment that required hydrocarbon removal during the period. The demolition of the mill facilities had progressed to the point where the equipment had all been cleaned by the 3rd Quarter. No mobile equipment was disposed of during the period.

PHOTOGRAPHIC RECORD

As specified in the Closure Plan, a photographic record of debris placement is being maintained. Attached to this appendix are pictures of typical debris being placed in LRDQL.

The water pooled in the bottom of the quarry is from natural melt water as the 3rd quarter of the year includes the two snow free months. Bulky items that are difficult to cut up or shred (tires) have been preferentially placed in the water so that their void spaces are filled. During the periods of active demolition, materials arrive at the LRDQL quicker than they can be processed and as result temporary piles of debris frequently build up until they can be processed further. An example is in Photographs #25 and #26 where sheet metal siding is piled in one area until the bailing machine (Photographs #28 and #48) can compact them. The water lines shown in Photographs xxx and xxx are the water return lines from the Tailings Thickener and are not tailings pipelines. Photograph #6 shows melt water contaminated with a red dye used in the production of Anfo. This should not have been placed into LRDQL but the contractor made an error in sorting. A skimmer was used to capture the dye and tests of the water were taken to confirm that the freezing temperatures were not affected. Refer to Appendix 7 of the 3rd Quarter report for further information. The water samples taken are included in Appendix 8.

POLARIS MINE DEBRIS DISPOSAL IN LANDFILLS - 3rd QUARTER 2003

Date	Origin Location	Disposal Location	Material	Quantity (m3)
1-Jul-03	Barge	L.R.D.	Steel	312
1-Jul-03	Barge	L.R.D.	Steel	228
1-Jul-03	Barge	L.R.D.	Steel	180
1-Jul-03	CRF Plant	Sink Hole	Concrete	80
1-Jul-03	CRF Plant	Sink Hole	Concrete	72
2-Jul-03	Barge	L.R.D.	Steel	12
2-Jul-03	Barge	L.R.D.	Steel	144
2-Jul-03	Dock	L.R.D.	Steel	15
3-Jul-03	Dock	L.R.D.	Steel	15
3-Jul-03	Dock	L.R.D.	Steel	45
4-Jul-03	Barge	L.R.D.	Steel	24
4-Jul-03	Burn Pit	L.R.D.	Garbage	40
4-Jul-03	Burn Pit	L.R.D.	Garbage	36
5-Jul-03	Barge	L.R.D.	Steel	108
5-Jul-03	Barge	L.R.D.	Steel	132
5-Jul-03	Burn Pit	L.R.D.	Steel	36
5-Jul-03	Dock	L.R.D.	Steel	30
6-Jul-03	Barge	L.R.D.	Steel	144
6-Jul-03	Storage building	L.R.D.	Steel	24
7-Jul-03	Barge	L.R.D.	Steel	60
7-Jul-03	Barge	L.R.D.	Steel	72
8-Jul-03	Barge	L.R.D.	Steel	180
9-Jul-03	Barge	L.R.D.	Steel	108
9-Jul-03	Storage building	L.R.D.	Steel	60
10-Jul-03	Barge	L.R.D.	Steel	180
10-Jul-03	Dock	L.R.D.	Concrete	15
10-Jul-03	Dock	L.R.D.	Steel	36
10-Jul-03	Dock	L.R.D.	Steel	36
10-Jul-03	Dock	L.R.D.	Steel	15
11-Jul-03	Barge	L.R.D.	Steel	180
11-Jul-03	Dock	L.R.D.	Steel	15
12-Jul-03	Barge	L.R.D.	Steel	72
12-Jul-03	Barge	L.R.D.	Steel	5
12-Jul-03	Dock	L.R.D.	Steel	18
12-Jul-03	Dock	L.R.D.	Steel	45
13-Jul-03	Barge	L.R.D.	Steel	60
13-Jul-03	Thickener	L.R.D.	Steel	120
13-Jul-03	Thickener	L.R.D.	Steel	48
13-Jul-03	Thickener	L.R.D.	Steel	24
14-Jul-03	Barge	L.R.D.	Steel	84
14-Jul-03	Thickener	Sink Hole	Concrete	80
14-Jul-03	Thickener	Sink Hole	Concrete	60
14-Jul-03	Thickener	L.R.D.	Steel	48
15-Jul-03	Barge	L.R.D.	Steel	192
15-Jul-03	Barge	L.R.D.	Steel	144
15-Jul-03	Barge	L.R.D.	Steel	204
15-Jul-03	Barge	L.R.D.	Steel	132
15-Jul-03	Thickener	Sink Hole	Concrete	60
15-Jul-03	Thickener	Sink Hole	Concrete	50
16-Jul-03	Barge	L.R.D.	Steel	24
16-Jul-03	Barge	L.R.D.	Steel	264
16-Jul-03	Barge	L.R.D.	Steel	120
16-Jul-03	Dock	L.R.D.	Steel	75
16-Jul-03	Thickener	L.R.D.	Steel	36
17-Jul-03	Barge	L.R.D.	Steel	108
17-Jul-03	Barge	L.R.D.	Steel	120
17-Jul-03	Barge	L.R.D.	Steel	120
17-Jul-03	Thickener	L.R.D.	Steel	12
18-Jul-03	Barge	L.R.D.	Steel	120
18-Jul-03	Barge	L.R.D.	Steel	156
18-Jul-03	Barge	L.R.D.	Steel	132
18-Jul-03	Barge	L.R.D.	Steel	204
18-Jul-03	Dock	L.R.D.	Steel	15
19-Jul-03	Barge	L.R.D.	Concrete	130
19-Jul-03	Barge	L.R.D.	Steel	20
19-Jul-03	Barge	L.R.D.	Steel	96
19-Jul-03	Barge	L.R.D.	Steel	108

POLARIS MINE DEBRIS DISPOSAL IN LANDFILLS - 3rd QUARTER 2003

Date	Origin Location	Disposal Location	Material	Quantity (m3)
19-Jul-03	Barge	L.R.D.	Steel	228
20-Jul-03	Barge	L.R.D.	Concrete	144
20-Jul-03	Barge	L.R.D.	Concrete	108
20-Jul-03	Barge	L.R.D.	Steel	160
20-Jul-03	Barge	L.R.D.	Steel	108
20-Jul-03	Barge	L.R.D.	Steel	12
20-Jul-03	Barge	L.R.D.	Steel	84
20-Jul-03	Barge	L.R.D.	Steel	192
21-Jul-03	Barge	L.R.D.	Concrete	26
21-Jul-03	Barge	Sink Hole	Concrete	12
21-Jul-03	Barge	L.R.D.	Steel	40
21-Jul-03	Barge	L.R.D.	Steel	210
21-Jul-03	Barge	L.R.D.	Steel	60
21-Jul-03	Barge	L.R.D.	Steel	108
21-Jul-03	Barge	L.R.D.	Steel	228
22-Jul-03	Barge	L.R.D.	Steel	140
22-Jul-03	Barge	L.R.D.	Steel	80
22-Jul-03	Barge	L.R.D.	Steel	108
22-Jul-03	Barge	L.R.D.	Steel	84
22-Jul-03	Barge	L.R.D.	Steel	264
22-Jul-03	Dock	L.R.D.	Steel	15
23-Jul-03	Barge	Sink Hole	Concrete	12
23-Jul-03	Barge	L.R.D.	Steel	96
24-Jul-03	Barge	L.R.D.	Concrete	198
24-Jul-03	Barge	L.R.D.	Concrete	72
24-Jul-03	Barge	L.R.D.	Concrete	126
24-Jul-03	Barge	L.R.D.	Concrete	180
24-Jul-03	Barge	L.R.D.	Concrete	78
25-Jul-03	Barge	L.R.D.	Steel	96
26-Jul-03	Barge	L.R.D.	Concrete	30
26-Jul-03	Barge	L.R.D.	Concrete	36
27-Jul-03	Barge	L.R.D.	Steel	70
27-Jul-03	Barge	L.R.D.	Steel	84
27-Jul-03	Barge	L.R.D.	Steel	36
27-Jul-03	Barge	L.R.D.	Steel	36
27-Jul-03	Barge	L.R.D.	Steel	84
27-Jul-03	Barge	L.R.D.	Steel	24
29-Jul-03	Barge	L.R.D.	Steel	72
29-Jul-03	Barge	L.R.D.	Steel	72
30-Jul-03	Barge	L.R.D.	Steel	168
30-Jul-03	Barge	L.R.D.	Steel	168
31-Jul-03	Barge	L.R.D.	Steel	48
31-Jul-03	Barge	L.R.D.	Steel	120
1-Aug-03	Barge	L.R.D.	Steel	12
1-Aug-03	Barge	L.R.D.	Steel	228
1-Aug-03	Barge	L.R.D.	Steel	192
1-Aug-03	Barge	L.R.D.	Steel	252
1-Aug-03	Barge	L.R.D.	Steel	216
1-Aug-03	Storage building	L.R.D.	Steel	120
1-Aug-03	Thickener	L.R.D.	Steel	15
2-Aug-03	Barge	L.R.D.	Steel	72
2-Aug-03	Barge	L.R.D.	Steel	180
2-Aug-03	Barge	L.R.D.	Steel	216
2-Aug-03	CRF Plant	L.R.D.	Cement bag	130
3-Aug-03	L.R.D.	L.R.D.	Steel & plastic	72
3-Aug-03	Storage building	L.R.D.	Steel	120
3-Aug-03	Storage building	L.R.D.	Steel	108
4-Aug-03	Barge	L.R.D.	Steel	20
5-Aug-03	Barge	L.R.D.	Steel	30
6-Aug-03	Barge	L.R.D.	Steel	13
6-Aug-03	Barge	L.R.D.	Steel	60
7-Aug-03	Barge	L.R.D.	Steel	104
8-Aug-03	Barge	L.R.D.	Steel	26
9-Aug-03	Barge	L.R.D.	Steel	13
9-Aug-03	Tank Farm	Underground	Pipe	105
10-Aug-03	Storage building	L.R.D.	Steel	195
10-Aug-03	Storage building	L.R.D.	Steel	300

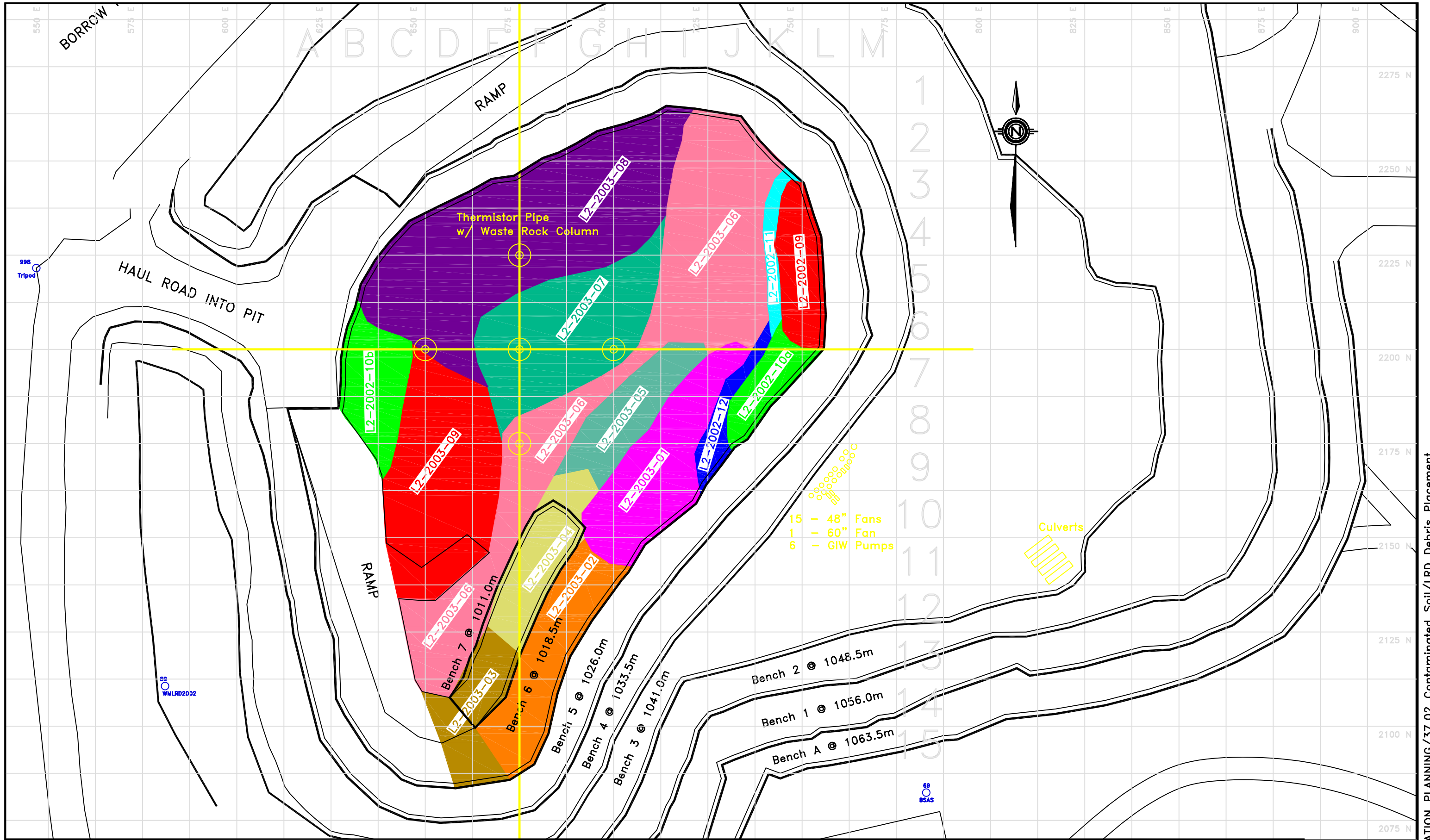
POLARIS MINE DEBRIS DISPOSAL IN LANDFILLS - 3rd QUARTER 2003

Date	Origin Location	Disposal Location	Material	Quantity (m3)
10-Aug-03	Thickener	L.R.D.	Tailing line	52
11-Aug-03	Barge	L.R.D.	Steel	169
11-Aug-03	Barge	L.R.D.	Steel	78
11-Aug-03	Raisebore	L.R.D.	Steel	18
11-Aug-03	Thickener	L.R.D.	Tailing line	65
12-Aug-03	Barge	L.R.D.	Steel	210
12-Aug-03	Storage building	L.R.D.	Steel	128
12-Aug-03	Storage building	L.R.D.	Steel	256
12-Aug-03	Storage building	L.R.D.	Steel	247
12-Aug-03	Storage building	L.R.D.	Steel	156
13-Aug-03	Storage building	L.R.D.	Steel	195
13-Aug-03	Storage building	L.R.D.	Steel	130
13-Aug-03	Storage building	L.R.D.	Steel	26
13-Aug-03	Storage building	L.R.D.	Steel	221
13-Aug-03	Storage building	L.R.D.	Steel	208
13-Aug-03	Storage building	L.R.D.	Steel	234
14-Aug-03	Barge	L.R.D.	Steel	150
14-Aug-03	Barge	L.R.D.	Steel	221
14-Aug-03	Barge	L.R.D.	Steel	360
14-Aug-03	Storage building	L.R.D.	Steel	220
14-Aug-03	Storage building	L.R.D.	Steel	15
14-Aug-03	Storage building	L.R.D.	Steel	130
14-Aug-03	Storage building	L.R.D.	Steel	13
14-Aug-03	Storage building	L.R.D.	Steel	169
14-Aug-03	Storage building	L.R.D.	Steel	143
15-Aug-03	Barge	L.R.D.	Steel	240
15-Aug-03	Barge	L.R.D.	Steel	26
15-Aug-03	Barge	L.R.D.	Steel	39
15-Aug-03	Storage building	L.R.D.	Steel	91
15-Aug-03	Storage building	L.R.D.	Steel	156
15-Aug-03	Storage building	L.R.D.	Steel	13
16-Aug-03	Barge	L.R.D.	Steel	20
16-Aug-03	Barge	L.R.D.	Steel	156
16-Aug-03	North Portal	L.R.D.	Steel	60
18-Aug-03	Loon Lake	L.R.D.	Steel	50
22-Aug-03	Barge	L.R.D.	Steel	75
22-Aug-03	Dock	L.R.D.	Steel	30
23-Aug-03	Storage building	L.R.D.	Steel	15
24-Aug-03	Barge	L.R.D.	Steel	50
24-Aug-03	Storage building	L.R.D.	Steel	24
25-Aug-03	Barge	L.R.D.	Steel	40
25-Aug-03	Storage building	L.R.D.	Steel	12
26-Aug-03	Barge	L.R.D.	Concrete	72
26-Aug-03	Barge	L.R.D.	Steel	24
26-Aug-03	Storage building	L.R.D.	Steel	24
28-Aug-03	Barge	L.R.D.	Steel	90
28-Aug-03	Barge	L.R.D.	Steel	12
29-Aug-03	Barge	L.R.D.	Steel	20
30-Aug-03	Barge	L.R.D.	Steel	72
30-Aug-03	Barge	L.R.D.	Steel	10
30-Aug-03	Barge	L.R.D.	Steel	48
30-Aug-03	Barge	L.R.D.	Steel	12
30-Aug-03	Barge	L.R.D.	Steel	48
30-Aug-03	Barge	L.R.D.	Steel	72
31-Aug-03	Barge	L.R.D.	Steel	24
31-Aug-03	Barge	L.R.D.	Steel	36
31-Aug-03	Shoreline North	L.R.D.	Steel	30
1-Sep-03	Barge	L.R.D.	Steel	12
1-Sep-03	Storage building	L.R.D.	Steel	48
2-Sep-03	Barge	L.R.D.	Steel	30
2-Sep-03	Barge	L.R.D.	Steel	36
2-Sep-03	Barge	L.R.D.	Steel	12
3-Sep-03	Barge	L.R.D.	Steel	36
3-Sep-03	Dock	L.R.D.	Concrete	90
4-Sep-03	Barge	L.R.D.	Steel	160
4-Sep-03	Barge	L.R.D.	Steel	12
4-Sep-03	Barge	L.R.D.	Steel	24

POLARIS MINE DEBRIS DISPOSAL IN LANDFILLS - 3rd QUARTER 2003

Date	Origin Location	Disposal Location	Material	Quantity (m3)
4-Sep-03	Barge	L.R.D.	Steel	12
5-Sep-03	Barge	L.R.D.	Concrete	16
5-Sep-03	Barge	L.R.D.	Steel	300
5-Sep-03	Shoreline North	L.R.D.	Concrete	45
5-Sep-03	Storage building	L.R.D.	Steel	12
6-Sep-03	Barge	L.R.D.	Steel	320
7-Sep-03	Barge	L.R.D.	Steel	60
7-Sep-03	Dock	L.R.D.	Steel	30
9-Sep-03	Dock	L.R.D.	Steel	15
9-Sep-03	Storage building	L.R.D.	Steel	18
10-Sep-03	Barge	L.R.D.	Steel	40
10-Sep-03	Barge	L.R.D.	Steel	12
11-Sep-03	Barge	L.R.D.	Steel	450
12-Sep-03	Barge	L.R.D.	Steel	240
13-Sep-03	Barge	L.R.D.	Steel	100
15-Sep-03	Barge	L.R.D.	Steel	18
15-Sep-03	Barge	L.R.D.	Steel	80
15-Sep-03	Barge	L.R.D.	Steel	80
15-Sep-03	Barge	L.R.D.	Steel	18
15-Sep-03	Storage building	L.R.D.	Steel	32
16-Sep-03	Dock	L.R.D.	Steel	210
16-Sep-03	Dock	L.R.D.	Styrofoam	3
17-Sep-03	Barge	L.R.D.	Steel	80
18-Sep-03	Barge	L.R.D.	Steel	120
18-Sep-03	Barge	L.R.D.	Steel	48
18-Sep-03	Barge	L.R.D.	Steel	18
19-Sep-03	Arctic Club	L.R.D.	Steel	12
20-Sep-03	Garrow Lake Dam	L.R.D.	Plastic pipe	120
20-Sep-03	Garrow Lake Dam	L.R.D.	Plastic pipe	200
21-Sep-03	Garrow Lake Dam	L.R.D.	Plastic pipe	280
21-Sep-03	Storage building	L.R.D.	Steel	36
21-Sep-03	Storage building	L.R.D.	Steel	12
22-Sep-03	Barge	L.R.D.	Steel	30
22-Sep-03	Barge	L.R.D.	Steel	108
22-Sep-03	Storage building	L.R.D.	Steel	24
22-Sep-03	Storage building	L.R.D.	Steel	24
23-Sep-03	Barge	L.R.D.	Steel	16
23-Sep-03	Storage building	L.R.D.	Steel	36
23-Sep-03	Storage building	L.R.D.	Steel	12
24-Sep-03	Barge	L.R.D.	Steel	12
24-Sep-03	Dock	L.R.D.	Steel	30
24-Sep-03	Storage building	L.R.D.	Steel	24
25-Sep-03	Garrow Lake Dam	L.R.D.	Styrofoam	12
25-Sep-03	Storage building	L.R.D.	Steel	48
26-Sep-03	Barge	L.R.D.	Steel	48
26-Sep-03	Garrow Lake Dam	L.R.D.	Styrofoam	48
26-Sep-03	Garrow Lake Dam	L.R.D.	Styrofoam	24
26-Sep-03	Garrow Lake Dam	L.R.D.	Styrofoam	12
26-Sep-03	Garrow Lake Dam	L.R.D.	Styrofoam	24
26-Sep-03	Storage building	L.R.D.	Steel	12
26-Sep-03	Storage building	L.R.D.	Steel	12
27-Sep-03	Garrow Lake Dam	L.R.D.	Styrofoam	72
27-Sep-03	Storage building	L.R.D.	Steel	12
28-Sep-03	Garrow Lake Dam	L.R.D.	Styrofoam/gravel	96
29-Sep-03	Garrow Lake Dam	L.R.D.	Styrofoam/gravel	12
29-Sep-03	Storage building	L.R.D.	Steel	12
30-Sep-03	Dock	L.R.D.	Steel	64
TOTAL PLACED				22,882

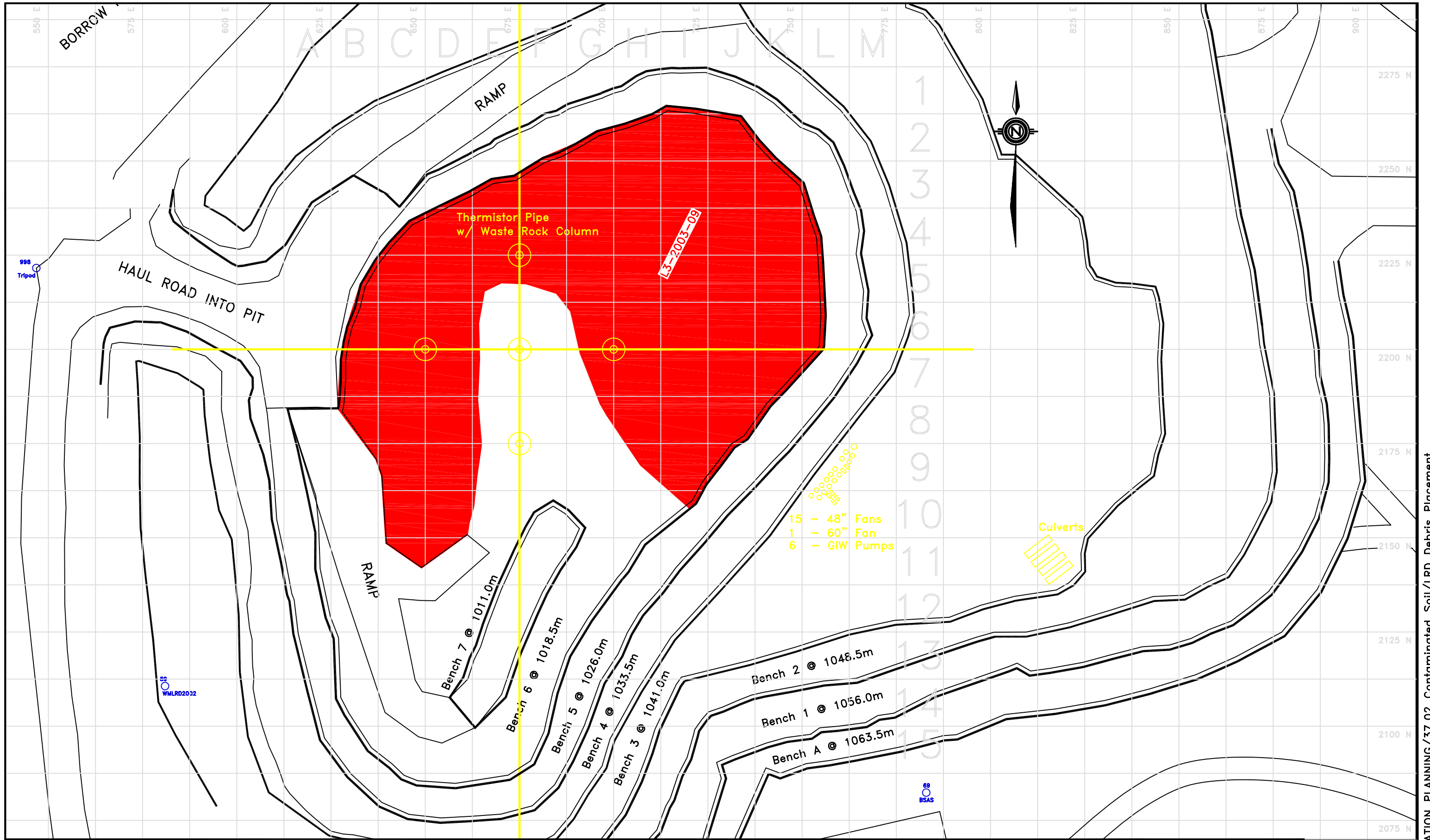
Note: Volume in m³ is loose volume before additional cutting / compacting in LRDQL



POLARIS PROJECT

LRD Quarry – LIFT 02 Demolition Debris Placement

DRAWN BY: TSF SCALE: 1:1000 DATE: JULY-2003 DWG #:



POLARIS PROJECT

LRD Quarry – LIFT 03
Demolition Debris Placement

DRAWN BY: TSF SCALE: 1:1000 DATE: JULY-2003 DWG #:

POLAIRS MINE – 2003 3rd QUARTER REPORT
PHOTOGRAPHS OF LITTLE RED DOG QUARRY LANDFILL DISPOSAL



Photograph #1
02-Jul-2003



Photograph #2
02-Jul-2003



Photograph #3
02-Jul-2003



Photograph #4
02-Jul-2003



Photograph #5
02-Jul-2003



Photograph #6
05-Jul-2003

POLAIRS MINE – 2003 3rd QUARTER REPORT
PHOTOGRAPHS OF LITTLE RED DOG QUARRY LANDFILL DISPOSAL



Photograph #7
09-Jul-2003



Photograph #8
10-Jul-2003



Photograph #9
14-Jul-2003



Photograph #10
15-Jul-2003



Photograph #11
21-Jul-2003



Photograph #12
31-Jul-2003

POLAIRS MINE – 2003 3rd QUARTER REPORT
PHOTOGRAPSH OF LITTLE RED DOG QUARRY LANDFILL DISPOSAL



Photograph #13
31-Jul-2003



Photograph #14
02-Aug-2003



Photograph #15
02-Aug-2003



Photograph #16
02-Aug-2003



Photograph #17
10-Aug-2003



Photograph #18
10-Aug-2003

POLAIRS MINE – 2003 3rd QUARTER REPORT
PHOTOGRAPSH OF LITTLE RED DOG QUARRY LANDFILL DISPOSAL



Photograph #19
10-Aug-2003



Photograph #20
13-Aug-2003



Photograph #21
13-Aug-2003



Photograph #22
14-Aug-2003



Photograph #23
14-Aug-2003



Photograph #24
15-Aug-2003

POLAIRS MINE – 2003 3rd QUARTER REPORT
PHOTOGRAPHS OF LITTLE RED DOG QUARRY LANDFILL DISPOSAL



Photograph #25
18-Aug-2003



Photograph #26
25-Aug-2003



Photograph #27
26-Aug-2003



Photograph #28
28-Aug-2003



Photograph #29
28-Aug-2003



Photograph #30
30-Aug-2003

POLAIRS MINE – 2003 3rd QUARTER REPORT
PHOTOGRAPSH OF LITTLE RED DOG QUARRY LANDFILL DISPOSAL



Photograph #31
31-Aug-2003



Photograph #32
31-Aug-2003



Photograph #33
31-Aug-2003



Photograph #34
31-Aug-2003



Photograph #35
01-Sep-2003



Photograph #36
01-Sep-2003

POLAIRS MINE – 2003 3rd QUARTER REPORT
PHOTOGRAPSH OF LITTLE RED DOG QUARRY LANDFILL DISPOSAL



Photograph #37
07-Sep-2003



Photograph #38
07-Sep-2003



Photograph #39
07-Sep-2003



Photograph #40
08-Sep-2003



Photograph #41
08-Sep-2003



Photograph #42
08-Sep-2003

POLAIRS MINE – 2003 3rd QUARTER REPORT
PHOTOGRAPHS OF LITTLE RED DOG QUARRY LANDFILL DISPOSAL



Photograph #43
10-Sep-2003



Photograph #44
14-Sep-2003



Photograph #45
16-Sep-2003



Photograph #46
18-Sep-2003



Photograph #47
18-Sep-2003



Photograph #48
18-Sep-2003

POLAIRS MINE – 2003 3rd QUARTER REPORT
PHOTOGRAPHS OF LITTLE RED DOG QUARRY LANDFILL DISPOSAL



Photograph #49
20-Sep-2003



Photograph #50
20-Sep-2003



Photograph #51
23-Sep-2003



Photograph #52
27-Sep-2003



Photograph #53
27-Sep-2003