



Photo 9 Arrival at Polaris via Air Nunavut King Air 200.



Photo 10 Transportation on site with quads provided by Teck Cominco.



Photo 11 View looking north along west side of airstrip towards former site of accommodation complex.



Photo 12 Causeway to Frustration Lake water intake. Piping and pump/intake building have been removed.



Photo 13 View (towards camp) along access road to Frustration Lake water intake.



Photo 14 View along Frustration Lake causeway from site of pump/intake building.



Photo 15 Arctic fox at temporary trailer camp.



Photo 16 View looking north of re-contoured area in vicinity of former CRF plant.



Photo 17 View of New Quarry. Some material was recently removed to complete site reclamation.



Photo 18 View to north of subsidence area and Reclamation Landfill. Tripod is location of survey point to measure subsidence.

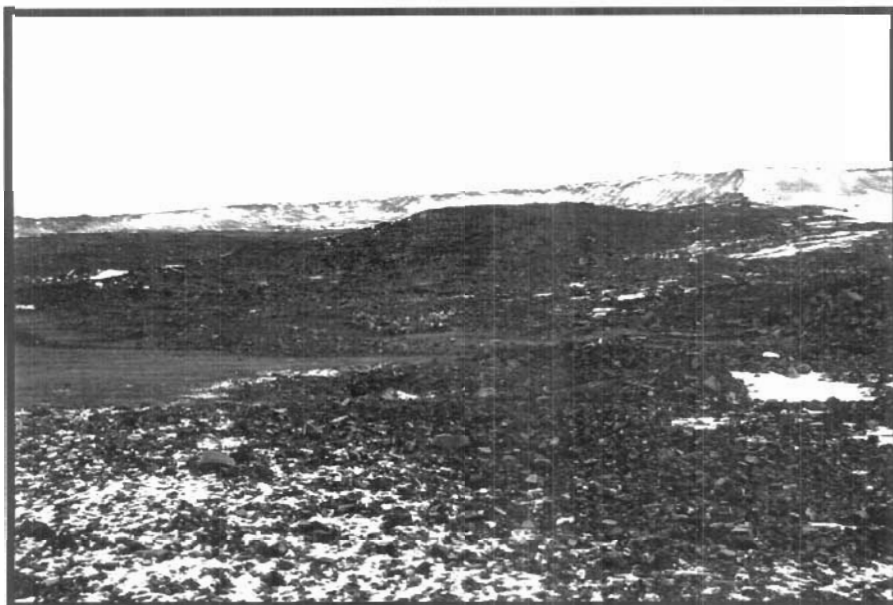


Photo 19 Berm of excavated shale with oversteepened slope in New Quarry. This slope should be flattened to conform to the remaining pit side slopes.



Photo 20 View to west from inside New Quarry.

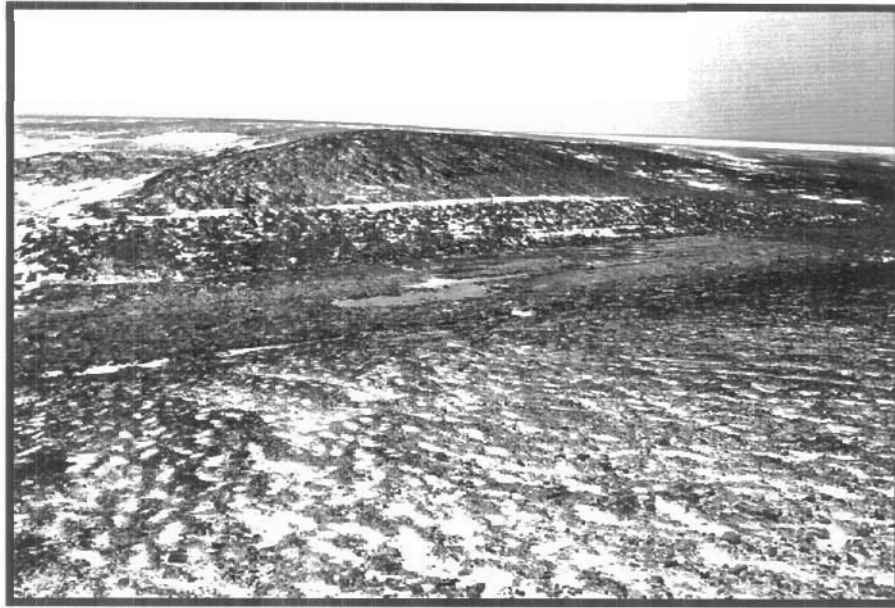


Photo 21 Garrow Lake Dam breach. View across channel to left abutment area.



Photo 22 View looking downstream along re-established channel through Garrow Lake Dam. Note coarse rip rap lining channel. A finer grade of rip rap was added above the channel rip rap to protect the lower exposed cuts through the dam embankment against erosion.



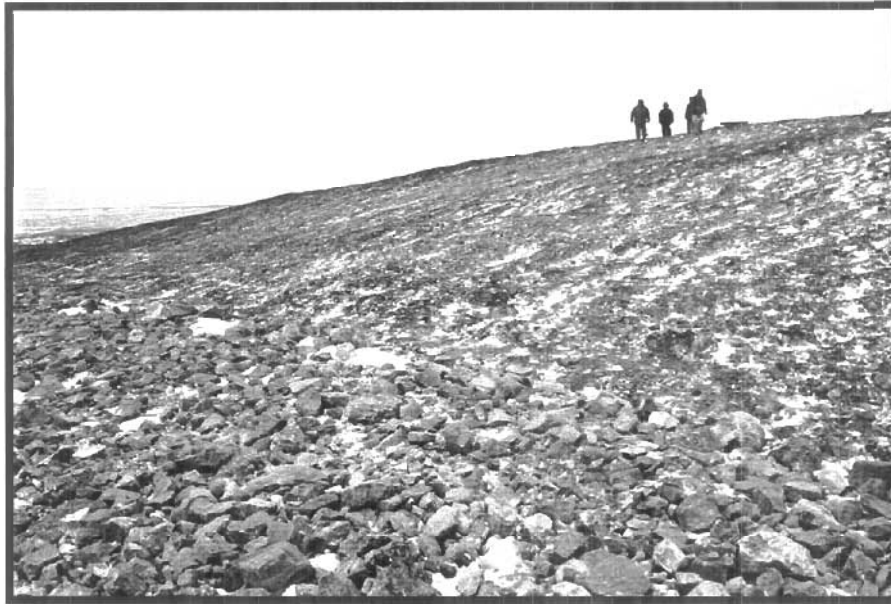


Photo 23 View along right bank cut slope through dam embankment.



Photo 24 View along upstream face of right bank of Garrow Lake Dam. Some of the material on the slope contains entrained ice and snow and will have to be removed over the next few years as it melts and drains out .





Photo 2 Rip rap cover placed on exposed erodible soils downstream of dam on right bank.



Photo 3 View of breached Garrow Lake Dam in distance from top of wave break structure. Note rusty colour of exposed lake bed.



Photo 4 Looking upstream towards Garrow Lake along the channel excavated through wave break structure.



Photo 5 Looking east along crest of wave break structure. Garrow Lake on left.



Photo 6 Looking west along wave break structure. Channel in foreground. Garrow Lake on right. Garrow Lake level is about 0.76 m below former natural lake level.

Photo 7 Close-up view of rusty coloured sediments in exposed lakebed. Samples were taken of this material by Teck Cominco as well as DIAND staff for analysis.

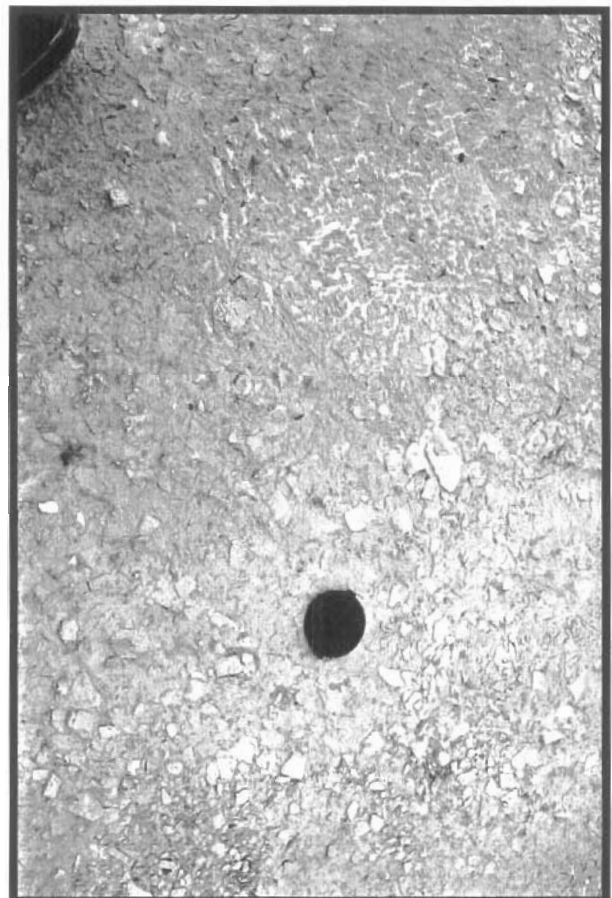




Photo 8 Re-established channel in lakebed downstream of wave break structure.



Photo 9 View of exposed lakebed downstream of wave break structure, with rusty coloured sediments.



Photo 10 Looking upstream along channel excavated through wave break structure. Teck Cominco added some fill into the breach to bring water level in Garrow Lake back up to former natural level.



Photo 11 View of reclaimed settling pond area adjacent to tailings thickener. Garrow Lake in background.



Photo 12 Reclaimed pad of former tailings thickener.



Photo 13 Tailings thickener pad, looking south.





Photo 14 Operational Landfill- cover with thermistor installation.



Photo 15 South slope of Operational Landfill. A 30 cm layer of finer grained cover material was placed to repair the cracks and settled areas noted in this area in the previous visit.





Photo 16 Slope of fill material below site of incinerator. This slope needs to be flattened.



Photo 17 View of shoreline, looking north in vicinity of former foldaway buildings. Note minor plume of suspended sediment along shoreline.