

UNSURVEYED CANADA LANDS

UTM COORDINATES  
NAD83-CSRS (EPOCH 2010.0) ZONE 14  
CENTRAL MERIDIAN 99° WEST

POINT	NORTHING	EASTING	ELEVATION	CSF	ACCURACY
GCP86C26	7136875.58	643583.65	32.85	0.999847	0.05
GCP8692900	7135894.41	644760.63	6.57	0.999847	0.05

COORDINATES WERE DERIVED FROM GNSS OBSERVATIONS HOLDING STATION GCP86C26 FIXED.

THE COORDINATES AND ACCURACY OF GCP86C26 WERE DERIVED FROM THE NATURAL RESOURCES CANADA PRECISE POINT POSITIONING (PPP) SERVICE.

THE PUBLISHED ESTIMATED ABSOLUTE HORIZONTAL ACCURACIES ARE AT THE 95% CONFIDENCE LEVEL.

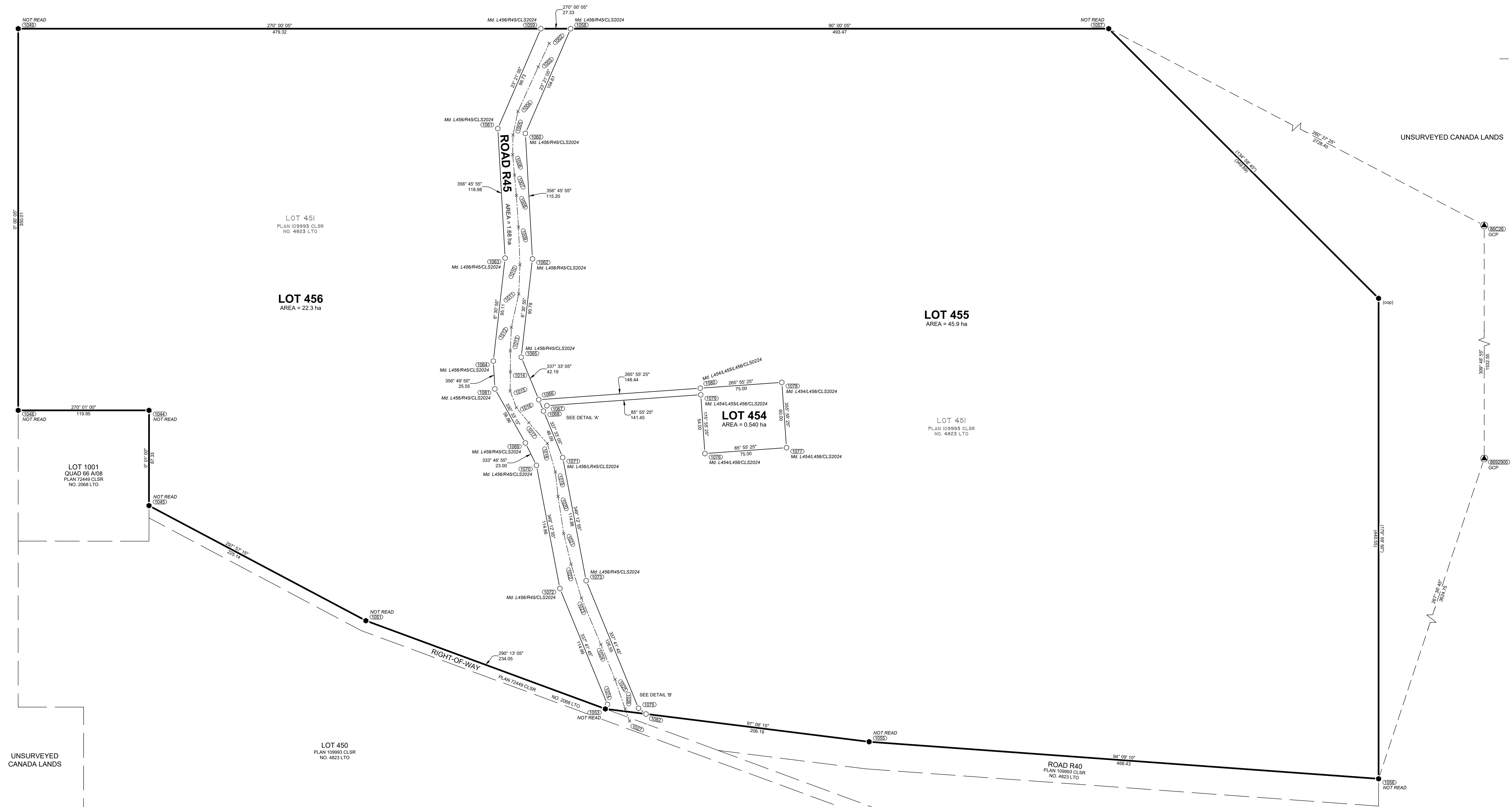
ELEVATIONS ARE ELLIPSOIDAL.

CSF STANDS FOR COMBINED SCALE FACTOR.

TIES TO FEATURES  
UTM COORDINATES  
NAD 83-CSRS (EPOCH 2010.0) ZONE 14  
CENTRAL MERIDIAN 99° WEST

POINT	NORTHING	EASTING	DESCRIPTION
1002	7136417.71	640379.12	CENTER LINE OF ROAD
1003	7136396.21	640369.08	CENTER LINE OF ROAD
1004	7136355.33	640350.50	CENTER LINE OF ROAD
1005	7136333.74	640345.96	CENTER LINE OF ROAD
1006	7136315.64	640345.61	CENTER LINE OF ROAD
1007	7136296.98	640347.32	CENTER LINE OF ROAD
1008	7136278.27	640349.03	CENTER LINE OF ROAD
1009	7136249.34	640350.96	CENTER LINE OF ROAD
1010	7136214.70	640352.31	CENTER LINE OF ROAD
1011	7136187.96	640351.22	CENTER LINE OF ROAD
1012	7136157.44	640344.45	CENTER LINE OF ROAD
1013	7136135.88	640343.49	CENTER LINE OF ROAD
1014	7136116.62	640343.52	CENTER LINE OF ROAD
1015	7136098.99	640343.30	CENTER LINE OF ROAD
1016	7136083.70	640349.05	CENTER LINE OF ROAD
1017	7136069.96	640360.43	CENTER LINE OF ROAD
1018	7136050.90	640377.38	CENTER LINE OF ROAD
1019	7136024.72	640384.76	CENTER LINE OF ROAD
1020	7136002.31	640387.26	CENTER LINE OF ROAD
1021	7135968.33	640392.42	CENTER LINE OF ROAD
1022	7135940.16	640399.14	CENTER LINE OF ROAD
1023	7135909.16	640408.67	CENTER LINE OF ROAD
1024	7135866.54	640426.46	CENTER LINE OF ROAD
1025	7135834.55	640439.48	CENTER LINE OF ROAD
1026	7135807.50	640448.76	CENTER LINE OF ROAD
1027	7135796.34	640452.86	CENTER LINE OF ROAD

QUAD 86 A/08  
PLAN 7249 CLSR  
NO. 2088 LTO



COMPILED PLAN  
OF  
LOTS 454 TO 456, AND  
ROAD R45  
AND FIELD NOTES OF SURVEY

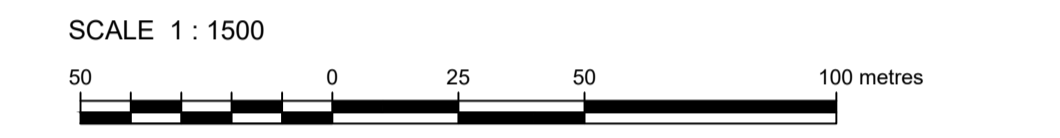
BAKER LAKE, NUNAVUT

NOTE: LANDS DEALT WITH BY THIS PLAN SUPERSEDES LOT 451, PLAN 109993 C.L.S.R., NO. 4823 L.T.O.

NOTE: THE COMPILED PORTIONS OF THIS PLAN ARE COMPILED FROM PLAN 109993 CLSR, NO. 4823 LTO SURVEYED BY VARICK OLLERHEAD, C.L.S. IN 2020

THE BOUNDARY INFORMATION FOR THE COMPILED PORTION OF THIS PLAN HAS BEEN COMPILED FROM INFORMATION AS NOTED AND NO NEW FIELD WORK WAS PERFORMED TO VERIFY THE MONUMENTS, MEASUREMENTS OR POTENTIAL BOUNDARY ENCROACHMENTS, UNLESS OTHERWISE SHOWN.

THIS SURVEY WAS EXECUTED DURING THE PERIOD OCTOBER 10 TO 13, 2024 BY REID EGGER, C.L.S.



THE PLOT SIZE THAT WILL PROVIDE TRUE SCALE AND OPTIMUM READABILITY FOR THIS PLAN IS 600MM BY 1400MM.

LEGEND

BEARINGS ARE GRID, DERIVED FROM GNSS OBSERVATIONS AND ARE REFERRED TO THE CENTRAL MERIDIAN OF U.T.M. ZONE 14 (99° WEST).

DISTANCES SHOWN ARE EXPRESSED IN METRES AND ARE HORIZONTAL AT GENERAL GROUND LEVEL.

ALL POSTS PLACED IN THE COURSE OF THIS SURVEY ARE MARKED WITH LOT, THE YEAR 2024, AND R FOR ROAD.

UTM COORDINATES ARE REFERRED TO A STATIC GNSS OBSERVATION, WHICH WAS PROCESSED BY PRECISE POINT POSITIONING BY THE CANADIAN SPATIAL REFERENCE SYSTEM TO COMPUTE UTM COORDINATES. DISTANCES HAVE BEEN REDUCED TO SEA LEVEL AND THE PROJECTION PLANE BY APPLYING A COMBINED SCALE FACTOR OF 0.999843

REAL TIME KINEMATIC GNSS OBSERVATIONS WERE USED TO DETERMINE ALL BOUNDARY DIMENSIONS SHOWN ON THIS SURVEY.

ALL PLACED MONUMENTS ARE MARKED WITH 0.05m X 0.05m X 0.60m LONG WOODEN MARKERS, UNLESS OTHERWISE NOTED. THESE MARKERS ARE PLACED 0.30m FROM THE MONUMENTS.

THE SURVEY REPORT FOR THIS PROJECT IS RECORDED UNDER FIELD BOOK NO. EB45067 C.L.S.R.

ALL COPIED DIMENSIONS ARE SHOWN THUS - (123.45) - (123' 45" 55")

- GEODETIC SURVEY CONTROL FOUND SHOWN THUS . . . . .
- CLS 77 POST FOUND SHOWN THUS . . . . .
- CLS 77 POST PLACED SHOWN THUS . . . . .
- CLS 77 POST CORDED SHOWN THUS . . . . .
- LANDS DEALT WITH BY THIS PLAN BOUNDED THUS . . . . .
- TIES SHOWN THUS . . . . .
- CENTER LINE OF ROAD SHOWN THUS . . . . .
- C.S. DENOTES COUNTERSUNK POST.

RE: SECTION 38, CANADA LANDS SURVEYORS REGULATIONS  
**CERTIFIED CORRECT**

I, REID EGGER, A CANADA LANDS SURVEYOR, CERTIFY THAT THIS PLAN ACCURATELY SHOWS THE MANNER IN WHICH I HAVE SURVEYED ANY LOT OR OTHER PARCEL SHOWN ON THE PLAN, THAT THE LOTS OR OTHER PARCELS SHOWN ON THIS PLAN WHICH I HAVE NOT SURVEYED ARE DELINEATED ACCURATELY, AND THAT I HAVE PREPARED THIS PLAN IN ACCORDANCE WITH THE PROVISIONS OF THE LAND TITLES ACT AND THE REGULATIONS.

DATED AT STRATHCONA COUNTY, AB

