

# **STANTEC INC.**

**CA - Operating**

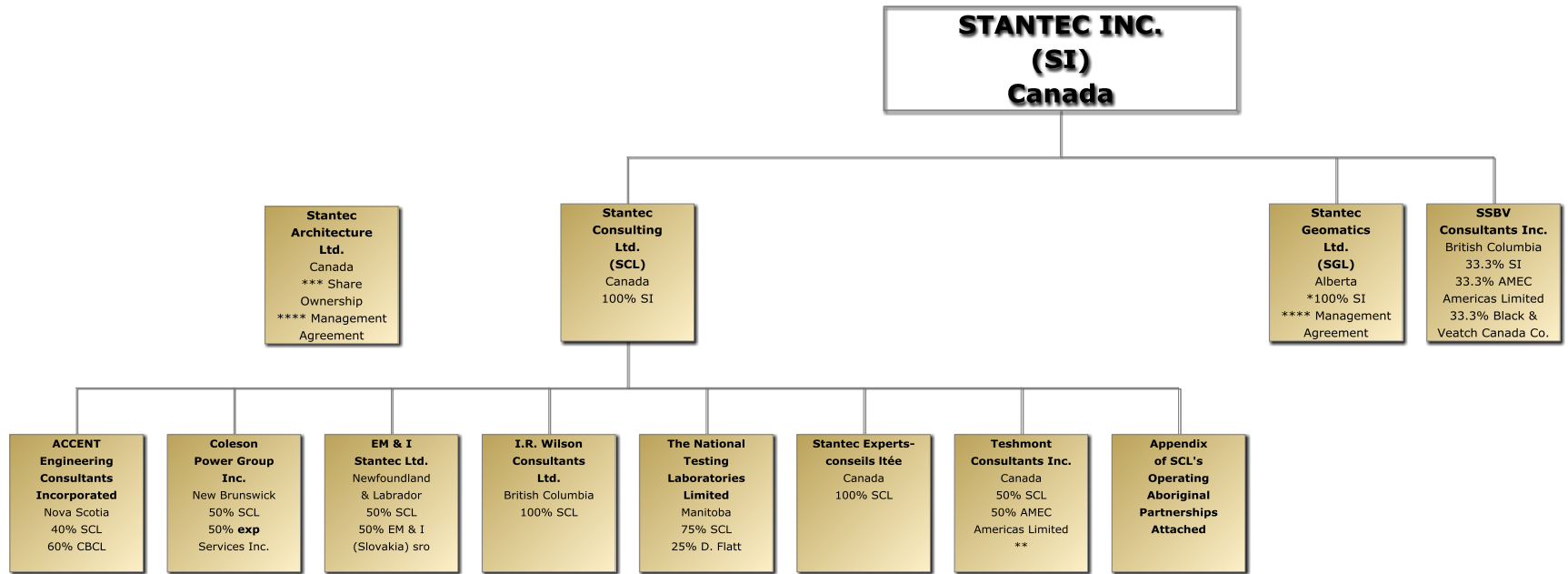
**Corporate Entity Structure**

**As of March 31, 2013**

**One Team. Infinite Solutions**



**STANTEC INC.  
CA - OPERATING  
CORPORATE ENTITY STRUCTURE  
AS OF MARCH 31, 2013**



Operating entities are shaded.

\* Beneficial holdings. See minute book for actual share structure.

\*\* See minute book for ownership of Preferred Shares.

\*\*\* See minute book for ownership details.

\*\*\*\* Has entered into a Management Agreement with SCL.

**STANTEC CONSULTING LTD.  
CA – OPERATING  
ABORIGINAL PARTNERSHIPS APPENDIX  
AS OF MARCH 31, 2013**

