

March 18, 2013

Phyllis Beaulieu
Licensing Manager
Nunavut Water Board
P.O. Box 119
Gjoa Haven, NU X0B 1J0

Dear Phyllis:

Project No: Water Use Licence No.: 1BR-BYR0712 2012 Annual Report
Regarding: PIN-4, Byron Bay DEW Line Site

AECOM Canada Ltd. is providing the attached annual report form as per Section B.1 of the above-noted water use license. The report is being submitted on behalf of Defence Construction Canada and the Department of National Defence.

During the 2012 field season at PIN-4, site activities included grading and completion of the Non-Hazardous Waste Landfill (NHWL) and Tier II Disposal Facility, reclamation of borrow areas, and monitoring of soil and water at various locations. The following is a detailed summary of the work items completed during the 2012 summer construction season at PIN-4:

- Reclamation of borrow areas
- Soil samples were collected at the North and Northwest Landfills as part of the baseline landfill monitoring program
- Final grading and capping at the Non-Hazardous Waste Landfill and Tier II Disposal Facility was completed
- Specifically, the work completed at the NHWL facility in 2012 included:
 - Completion of Type II granular application
 - Type I granular placed on side slopes of landfill
 - ~ 150mm of organic soil was placed on top of NHWL facility
 - Granular slow release fertilizer placed on top of landfill to promote revegetation
- The work completed at the Tier II Disposal Facility in 2012 included:
 - Placement of Type II granular fill
 - Type I material placed on side slopes of facility
 - ~ 150 mm thickness of organic material placed on top of the facility
 - Granular slow release fertilizer placed on top of facility to promote revegetation
 - Thermistor cables and data loggers were installed in PVC casings
 - Perimeter of eastern side of facility was reshaped to provide positive drainage

Community Consultations: The results of the community meetings held by DCC were submitted with the Project Description. The contractor typically holds a project start up meeting prior to each season; however, the 2012 season was very short and mainly had the same workforce as 2011. As a result, only a short start up meeting was completed, which did not include a formal presentation.

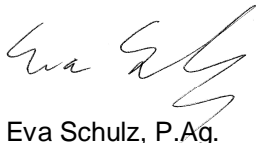
Spill Incidences: None reported.

Monitoring Reports: No monitoring reports were prepared, as there were no wastewater or sewage effluent samples collected.

All decommissioning work at the PIN-4 site has been completed. The only remaining task is to remove the PCB material currently in the registered temporary storage area, which is expected to be completed in August 2013.

We trust the information provided is sufficient. Please feel free to contact the undersigned if you require any additional information.

Sincerely,
AECOM Canada Ltd.



Eva Schulz, P.Ag.
Senior Environmental Scientist
Eva.Schulz@aecom.com

EMS.
cc: Tamara Van Dyck, DCC

Encl. Annual Report Form; Updated Site Figures; Selected Site Photos

NWB Annual Report

Year being reported:

2012

License No: 1BR-BYR0712 Issued Date: July 23, 2007
 Expiry Date: December 31, 2012

Project Name: PIN-4, Byron Bay DEW Line Site Clean Up

Licensee: Defence Construction Canada

Mailing Address: Defence Construction Canada
 DGME
 101 Colonel By Drive,
 Ottawa, Ontario, Canada. K1A 0K2

Name of Company filing Annual Report (if different from Name of Licensee please clarify relationship between the two entities, if applicable):

AECOM
 Design Engineering and Regulatory Support

General Background Information on the Project (*optional):

Licence Requirements: the licensee must provide the following information in accordance with

Part B ▼ Item 1 ▼

A summary report of water use and waste disposal activities, including, but not limited to: methods of obtaining water; sewage and greywater management; drill waste management; solid and hazardous waste management.

Water Source(s):	Water Supply Lake (BYR-1)	
Water Quantity:	55 per day	Quantity Allowable Domestic (cu.m)
	14.5 per day/ for 32 days	Actual Quantity Used Domestic (cu.m)
		Quantity Allowable Drilling (cu.m)
		Total Quantity Used Drilling (cu.m)

Waste Management and/or Disposal

- ☒ Solid Waste Disposal
☒ Sewage 123.2 cu.m of sewage and greywater discharged to sewage lagoon
☐ Drill Waste
☒ Greywater
☐ Hazardous
☒ Other:

Additional Details:

Details of the waste management were provided in the application supporting documents.

A list of unauthorized discharges and a summary of follow-up actions taken.

Spill No.: (as reported to the Spill Hot-line)
 Date of Spill:
 Date of Notification to an Inspector:
 Additional Details: (impacts to water, mitigation measures, short/long term monitoring, etc)
 N/A

N/A

Revisions to the Spill Contingency Plan

SCP submitted and approved - no revision required or proposed

Additional Details:

Revisions to the Abandonment and Restoration Plan

N/A - not applicable

Additional Details:

The project is an Abandonment and Restoration project.

Progressive Reclamation Work Undertaken

Additional Details (i.e., work completed and future works proposed)

n/a

Results of the Monitoring Program including:**The GPS Co-ordinates (in degrees, minutes and seconds of latitude and longitude) of each location where sources of water are utilized:**

Select

Additional Details:

The GPS Co-ordinates (in degrees, minutes and seconds of latitude and longitude) of each location where wastes associated with the licence are

Details attached

Additional Details:

Results of any additional sampling and/or analysis that was requested by an Inspector

No additional sampling requested by an Inspector or the Board

Additional Details: (date of request, analysis of results, data attached, etc)

Any other details on water use or waste disposal requested by the Board by November 1 of the year being reported.

No additional sampling requested by an Inspector or the Board ▼

Additional Details: (Attached or provided below)

--

Any responses or follow-up actions on inspection/compliance reports

No inspection and/or compliance report issued by INAC ▼

Additional Details: (Dates of Report, Follow-up by the Licensee)

--

Any additional comments or information for the Board to consider

--

Date Submitted:

March 18, 2013

Submitted/Prepared by:

Eva Schulz

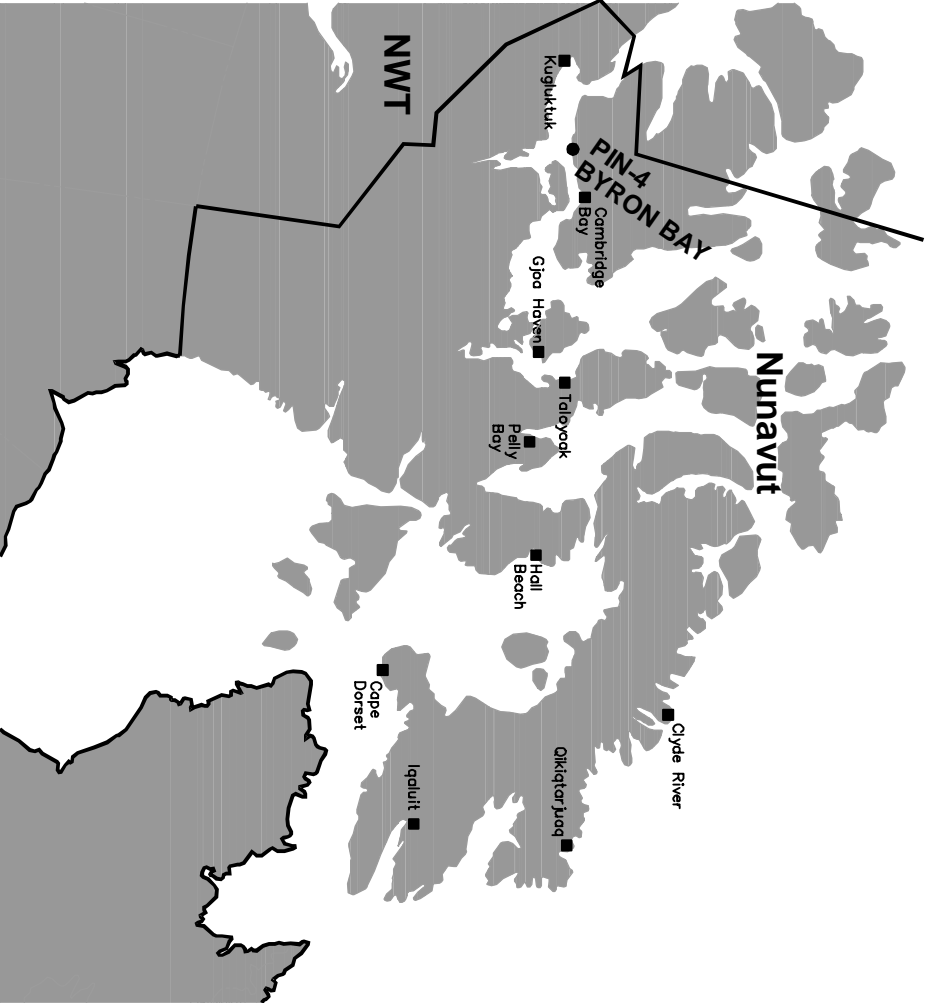
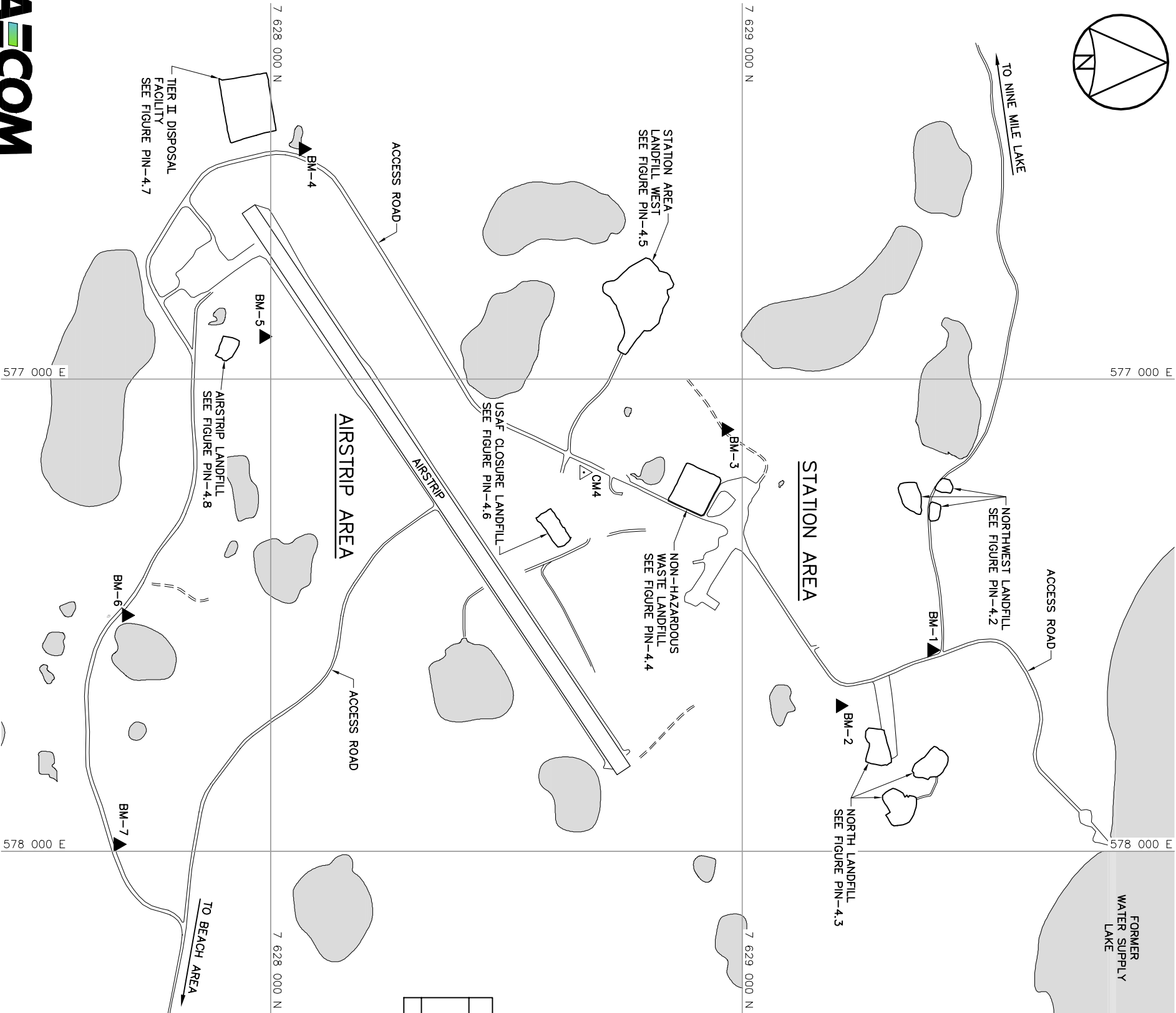
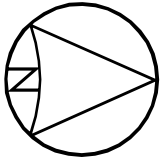
Contact Information:**Tel:** 403-270-9220**Fax:** 403-270-9196**email:** eva.schulz@aecom.com

GPS Coordinates for water sources utilized

Source Description	UTM Zone 12N, NAD83	
	Northing	Easting
water supply lake	7629850	578000

GPS Locations of areas of waste disposal

Location Description (type)	UTM Zone 12N, NAD83	
	Northing	Easting
Landfarm Berm (NO1)	7627922.1	581046.7
Landfarm Berm (NO3)	7627868.7	581139.9
Landfarm Berm (NO4)	7627772.2	581056.9
Landfarm Berm (NO6)	7627857.6	580991.2
Non-Hazardous Waste Landfill (Q01)	7628945.2	577219.4
Non-Hazardous Waste Landfill (Q02)	7628915.3	577282.7
Non-Hazardous Waste Landfill (Q03)	7628856.6	577255
Non-Hazardous Waste Landfill (Q04)	7628886.4	577191.7
Tier II Landfill (R01)	7627978.4	576372.9
Tier II Landfill (R02)	7627993.9	576456.5
Tier II Landfill (R03)	7627934.9	576467.4
Tier II Landfill (R04)	7627919.4	576383.9
Sewage Lagoon	n/a	



LOCATION OF BYRON BAY WITHIN NUNAVUT TERRITORY
SCALE: NTS

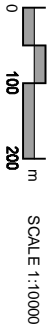
SURVEY CONTROL MONUMENTS			
NO.	UTM COORDINATES		ELEV.
	NORTHING	EASTING	
CM4	7 628 665.138	577 197.194	106.968
			GEODETIC MONUMENT 649020

- GENERAL NOTES:
- ALL COORDINATES ARE REFERENCED TO NAD83 (CSRS), UTM ZONE 12N. ALL ELEVATIONS REFER TO GEODETIC DATUM.
 - ALL DIMENSIONS ARE IN METRES UNLESS NOTED OTHERWISE.

PERMANENT BENCHMARK (AS-BUILT)			
NO.	UTM COORDINATES		ELEV.
	NORTHING	EASTING	
BM-1	7 629 402.938	577 573.748	105.711
BM-2	7 629 208.381	577 691.650	106.895
BM-3	7 628 966.171	577 106.215	102.610
BM-4	7 628 070.119	576 511.803	90.608
BM-5	7 627 986.564	576 909.188	87.778
BM-6	7 627 694.789	577 499.858	88.479
BM-7	7 627 677.411	577 985.417	88.710
			25mm DIA. STEEL PIPE

- LEGEND:
- SURVEY CONTROL MONUMENT
 - PERMANENT BENCHMARK
 - BODY OF WATER

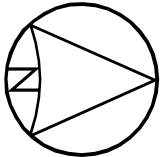
RECORD DRAWING
NOT FOR CONSTRUCTION



SCALE 1:10000

DEW LINE CLEAN UP
LANDFILL MONITORING PLAN
PIN-4 BYRON BAY
LOCATION PLAN
FIGURE PIN-4.1





RECORD DRAWING
NOT FOR CONSTRUCTION

07.515m

SCALE 1:750

- GENERAL NOTES:
- ALL COORDINATES ARE REFERENCED TO NAD83 (CSRS), UTM ZONE 12N. ALL ELEVATIONS REFER TO GEODETIC DATUM.
 - ALL DIMENSIONS ARE IN METRES UNLESS NOTED OTHERWISE.

LEGEND:

COORDINATE POINT

MONITORING SOIL SAMPLE LOCATION (S)

BODY OF WATER

NORTHWEST LANDFILL (LOBE B) REGRADED (AS-BUILT)			
NO.	UTM COORDINATES		ELEV.
	NORTHING	EASTING	
110	7 629 366.7	577 224.6	105.0
111	7 629 371.4	577 240.1	105.5
112	7 629 376.2	577 251.3	105.7
113	7 629 375.2	577 280.0	105.8
114	7 629 356.3	577 271.1	104.8
115	7 629 345.4	577 261.4	104.4
116	7 629 336.5	577 230.7	103.8
117	7 629 344.3	577 223.5	103.7

NORTHWEST LANDFILL (LOBE C) REGRADED (AS-BUILT)			
NO.	UTM COORDINATES		ELEV.
	NORTHING	EASTING	
120	7 629 416.9	577 270.2	104.3
121	7 629 412.0	577 285.5	105.0
122	7 629 409.3	577 294.9	105.1
123	7 629 402.7	577 295.1	105.6
124	7 629 401.4	577 287.7	105.5
125	7 629 401.7	577 265.7	105.0

NORTHWEST LANDFILL (LOBE D) REGRADED (AS-BUILT)			
NO.	UTM COORDINATES		ELEV.
	NORTHING	EASTING	
130	7 629 439.4	577 216.6	102.3
131	7 629 443.8	577 222.6	102.1
132	7 629 443.9	577 235.5	103.0
133	7 629 431.0	577 236.3	103.6
134	7 629 414.0	577 231.7	104.2
135	7 629 416.0	577 224.4	103.9
136	7 629 425.7	577 212.8	103.4

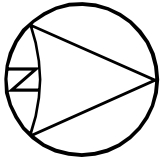
DEW LINE CLEAN UP
LANDFILL MONITORING PLAN

PIN-4 BYRON BAY

NORTHWEST LANDFILL
LOBES B, C, D

FIGURE PIN-4.2





NORTH LANDFILL (LOBE C) REGRADED (AS-BUILT)			
NO.	UTM COORDINATES		ELEV.
	NORTHING	EASTING	
301	7 629 297.0	577 748.3	110.4
302	7 629 309.8	577 807.9	109.6
303	7 629 301.9	577 814.1	107.5
304	7 629 278.2	577 810.0	107.4
305	7 629 268.7	577 805.8	107.4
306	7 629 280.3	577 774.0	107.8
307	7 629 266.6	577 755.3	108.6
308	7 629 270.6	577 745.0	109.0
309	7 629 285.9	577 746.2	109.3

NORTH LANDFILL (LOBE A) REGRADED (AS-BUILT)			
NO.	UTM COORDINATES		ELEV.
	NORTHING	EASTING	
201	7 629 345.5	577 888.4	106.6
202	7 629 336.2	577 904.2	107.4
203	7 629 334.4	577 912.0	107.4
204	7 629 331.3	577 916.3	107.3
205	7 629 323.5	577 918.4	106.9
206	7 629 318.7	577 916.5	106.8
207	7 629 317.1	577 909.1	106.9
208	7 629 303.0	577 887.3	107.0
209	7 629 306.3	577 881.9	107.1
210	7 629 319.0	577 871.9	106.9
211	7 629 324.9	577 870.8	106.8

NORTH LANDFILL (LOBE B) REGRADED (AS-BUILT)			
NO.	UTM COORDINATES		ELEV.
	NORTHING	EASTING	
220	7 629 406.5	577 783.4	105.0
221	7 629 427.8	577 803.2	99.0
222	7 629 431.8	577 815.1	97.4
223	7 629 428.5	577 822.5	97.3
224	7 629 414.7	577 836.4	97.5
225	7 629 407.2	577 836.5	98.4
226	7 629 385.0	577 840.8	100.5
227	7 629 376.3	577 835.6	105.0
228	7 629 370.7	577 834.6	107.1
229	7 629 366.2	577 826.7	108.0
230	7 629 375.9	577 813.3	107.7
231	7 629 394.1	577 797.6	106.0
232	7 629 401.7	577 786.1	105.3

- GENERAL NOTES:
- ALL COORDINATES ARE REFERENCED TO NAD83 (CSRS), UTM ZONE 12N. ALL ELEVATIONS REFER TO GEODETIC DATUM.
 - ALL DIMENSIONS ARE IN METRES UNLESS NOTED OTHERWISE.

LEGEND:

- PERMANENT BENCHMARK LOCATION (1)
- COORDINATE POINT
- MONITORING SOIL SAMPLE LOCATION (7)

PERMANENT BENCHMARK (AS-BUILT)			
NO.	UTM COORDINATES		ELEV.
	NORTHING	EASTING	
BM-2	7 629 208.381	577 691.650	106.895
25mm DIA. STEEL PIPE			

RECORD DRAWING
NOT FOR CONSTRUCTION

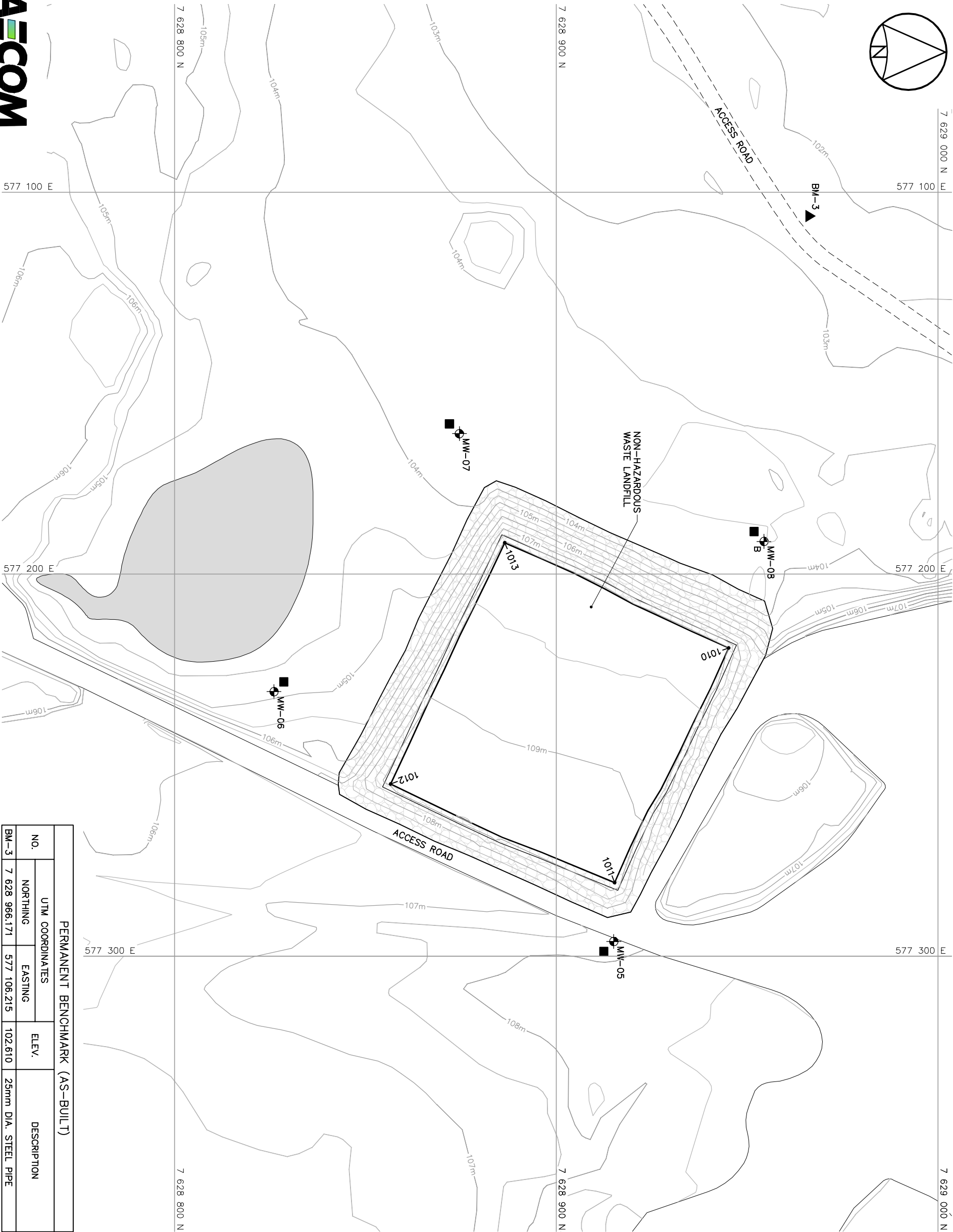
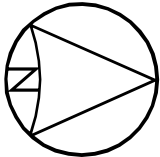


DEW LINE CLEAN UP
LANDFILL MONITORING PLAN

PIN-4 BYRON BAY

NORTH LANDFILL
LOBES A, B, C
FIGURE PIN-4.3





- GENERAL NOTES:
- ALL COORDINATES ARE REFERENCED TO NAD83 (CSRS), UTM ZONE 12N. ALL ELEVATIONS REFER TO GEODETIC DATUM.
 - ALL DIMENSIONS ARE IN METRES UNLESS NOTED OTHERWISE.

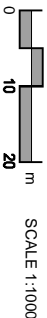
- LEGEND:
- ▲ BM-3 PERMANENT BENCHMARK LOCATION (1)
 - 1010 COORDINATE POINT
 - ⊕ MW-05 MONITORING WELL LOCATION (3)
 - ⊕ B MW-08 BACKGROUND MONITORING WELL LOCATION (1)
 - MONITORING SOIL SAMPLE LOCATION (4)
 - ☁ BODY OF WATER

NON-HAZARDOUS WASTE LANDFILL FINAL GRADING (AS-BUILT)			
NO.	UTM COORDINATES		ELEV.
	NORTHING	EASTING	
1010	7 628 945.2	577 219.3	108.0
1011	7 628 915.3	577 280.7	109.5
1012	7 628 856.6	577 254.9	109.4
1013	7 628 886.5	577 191.7	108.1

NOTE:
COORDINATE POINTS AND ELEVATIONS PROVIDED ARE TO THE FINAL GRADE OF THE TYPE 2 GRANULAR FILL CAP PRIOR TO THE PLACEMENT OF THE TYPE 1 GRANULAR FILL ON THE SIDE SLOPES.

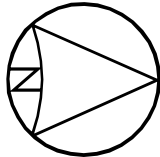
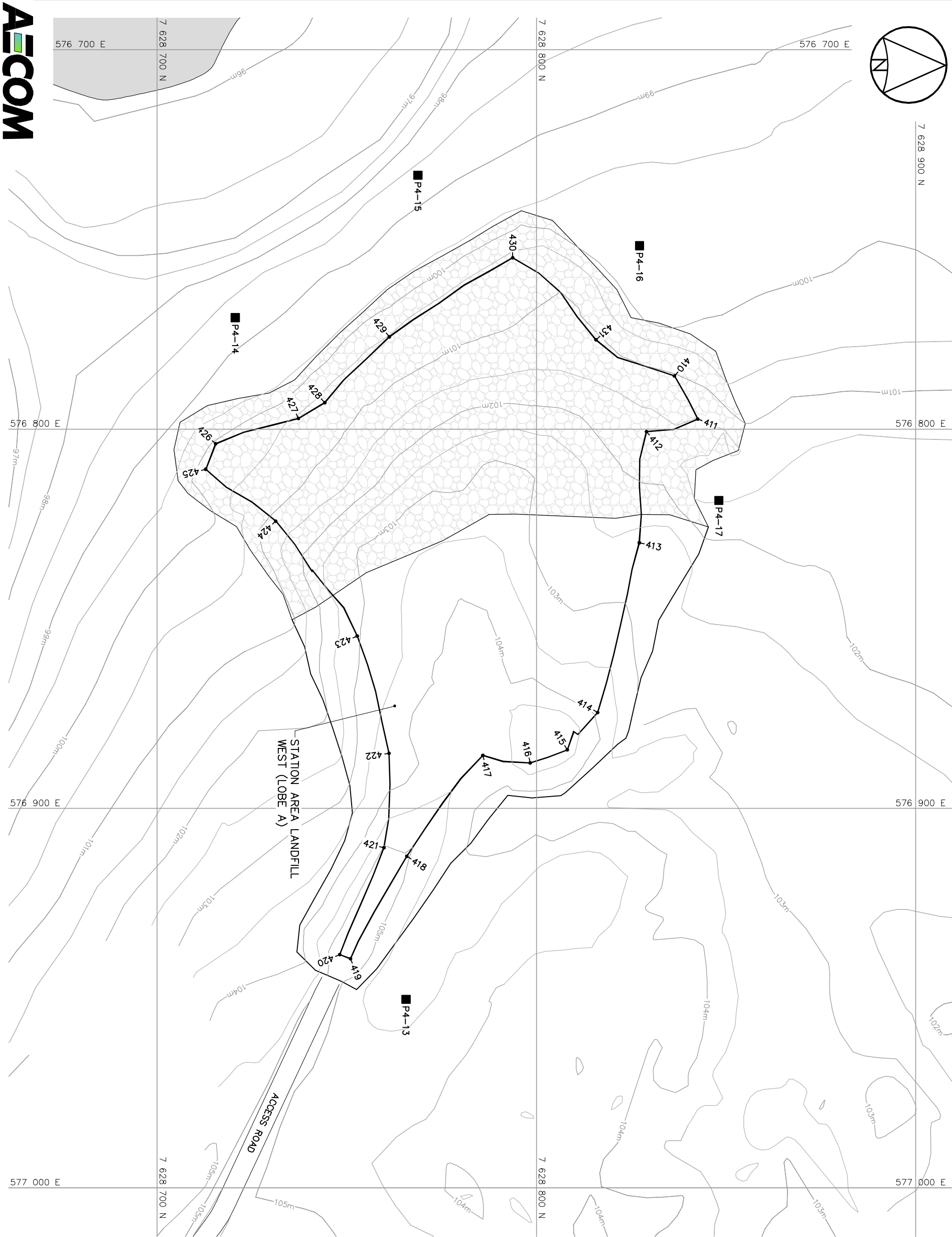
NON-HAZARDOUS WASTE LANDFILL MONITORING WELLS (AS-BUILT)			
NO.	UTM COORDINATES		ELEV.
	NORTHING	EASTING	
MW-05	7 628 915.1	577 296.1	107.9
MW-06	7 628 826.1	577 230.7	104.7
MW-07	7 628 874.6	577 163.2	103.7
MW-08	7 628 954.4	577 191.4	103.6

RECORD DRAWING
NOT FOR CONSTRUCTION



DEW LINE CLEAN UP
LANDFILL MONITORING PLAN

PIN-4 BYRON BAY
NON - HAZARDOUS
WASTE LANDFILL
FIGURE PIN-4.4



- GENERAL NOTES:
- ALL COORDINATES ARE REFERENCED TO NAD83 (CSRS), UTM ZONE 12N. ALL ELEVATIONS REFER TO GEODETIC DATUM.
 - ALL DIMENSIONS ARE IN METRES UNLESS NOTED OTHERWISE.

LEGEND:

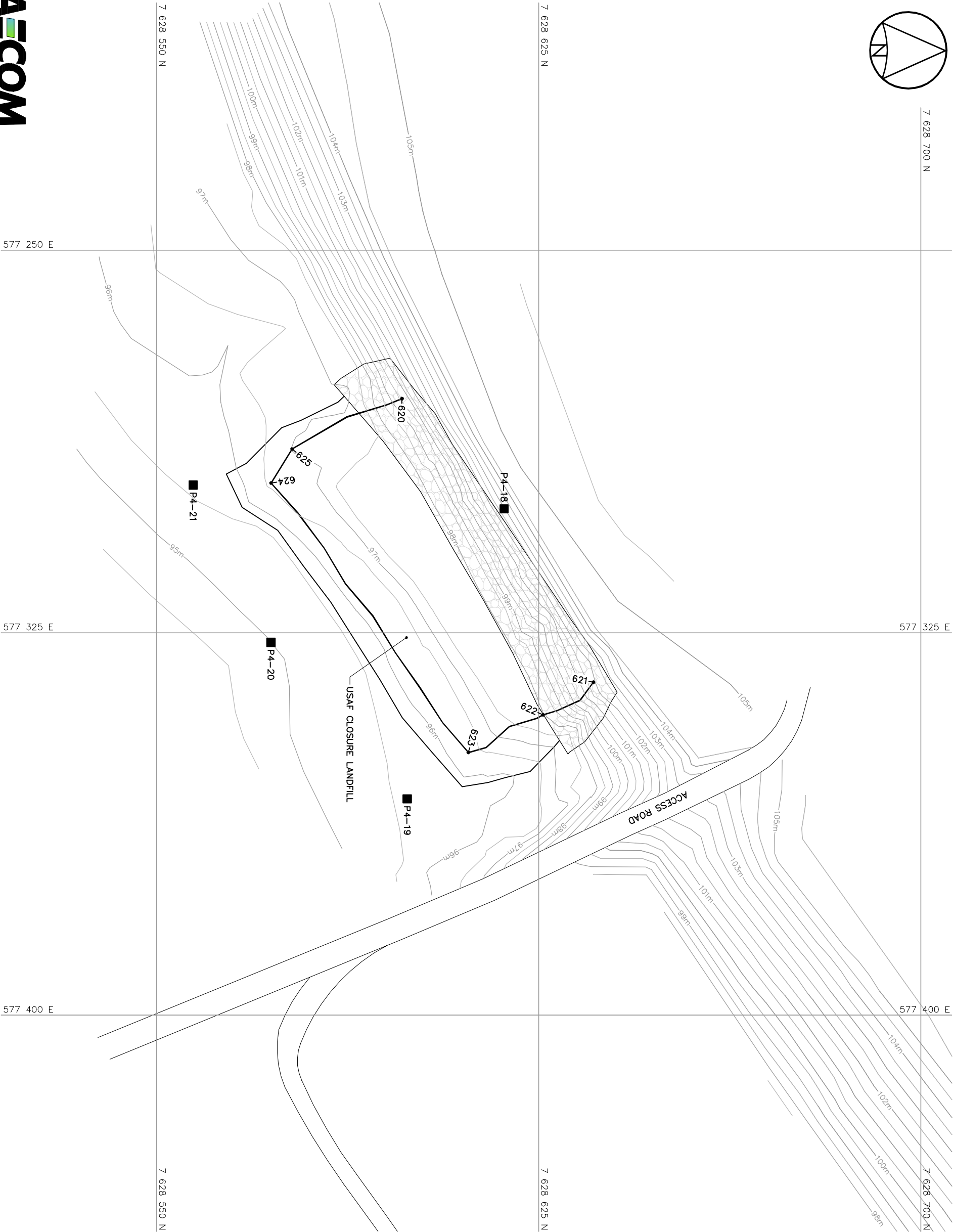
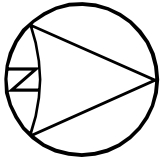
- COORDINATE POINT
- MONITORING SOIL SAMPLE LOCATION (S)
- BODY OF WATER

STATION AREA LANDFILL-WEST (LOBE A) REGRADED (AS-BUILT)			
NO.	UTM COORDINATES		ELEV.
	NORTHING	EASTING	
410	7 628 836.5	576 785.9	101.0
411	7 628 842.6	576 797.3	101.5
412	7 628 829.1	576 800.6	101.7
413	7 628 827.2	576 828.9	102.7
414	7 628 816.2	576 874.6	103.9
415	7 628 808.2	576 884.5	104.9
416	7 628 798.4	576 887.9	104.9
417	7 628 785.9	576 886.0	104.3
418	7 628 765.9	576 912.5	105.0
419	7 628 751.0	576 939.6	105.5
420	7 628 748.2	576 938.5	105.4
421	7 628 759.9	576 910.3	105.0
422	7 628 761.2	576 885.4	103.7
423	7 628 752.8	576 854.5	103.0
424	7 628 731.3	576 824.2	101.1
425	7 628 712.9	576 810.5	100.1
426	7 628 715.4	576 803.8	100.1
427	7 628 737.3	576 797.2	100.6
428	7 628 744.2	576 793.0	100.7
429	7 628 761.3	576 775.6	100.5
430	7 628 793.8	576 754.8	100.6
431	7 628 815.8	576 776.4	101.1

RECORD DRAWING
NOT FOR CONSTRUCTION



DEW LINE CLEAN UP
LANDFILL MONITORING PLAN
PIN-4 BYRON BAY
STATION AREA LANDFILL
WEST LOBE A
FIGURE PIN-4.5



- GENERAL NOTES:
1. ALL COORDINATES ARE REFERENCED TO NAD83 (CSRS), UTM ZONE 12N. ALL ELEVATIONS REFER TO GEODETIC DATUM.
 2. ALL DIMENSIONS ARE IN METRES UNLESS NOTED OTHERWISE.

- LEGEND:
- 620 COORDINATE POINT
 - MONITORING SOIL SAMPLE LOCATION (4)

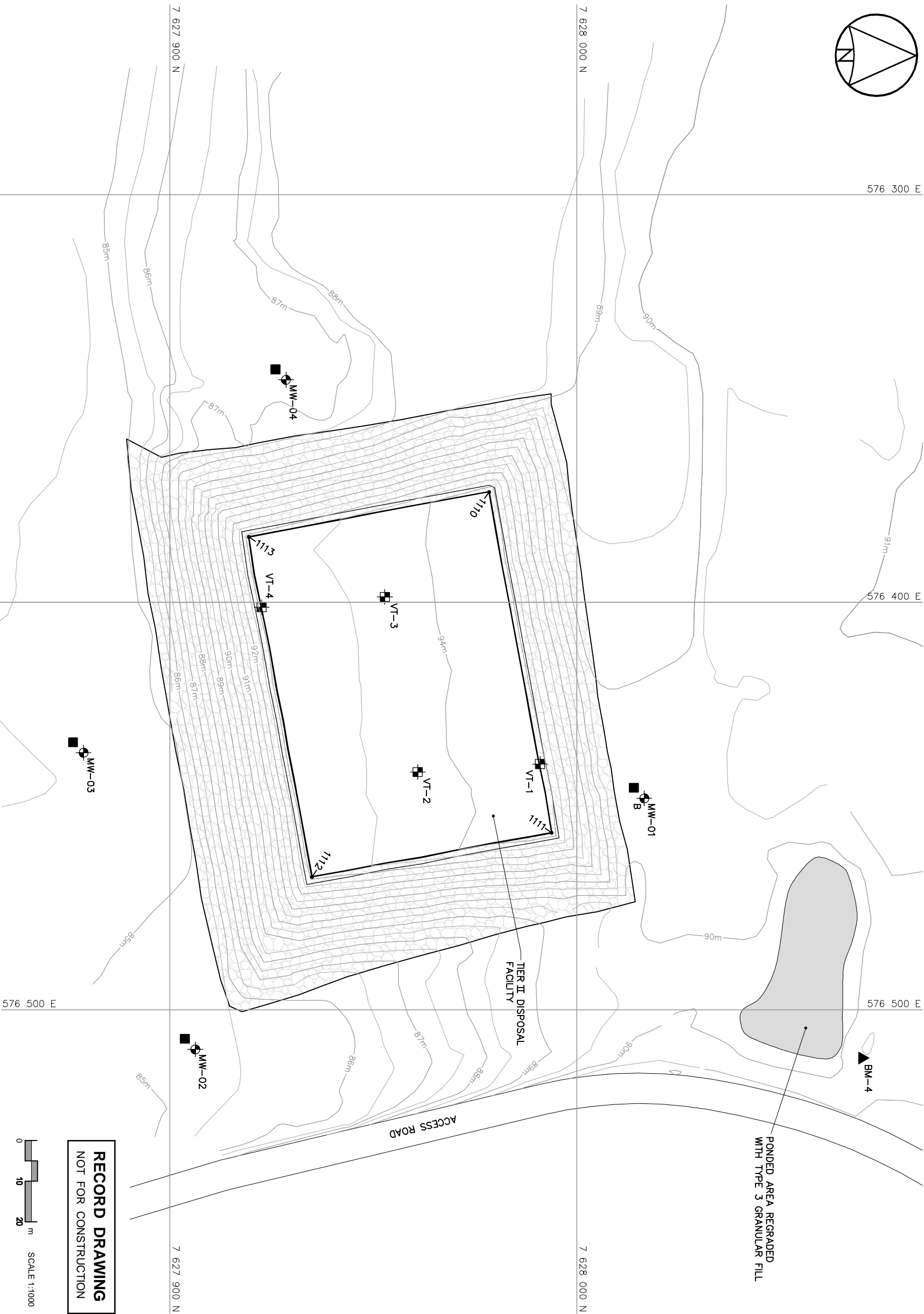
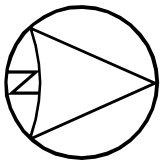
USAF CLOSURE LANDFILL REGRADED (AS-BUILT)			
NO.	UTM COORDINATES		ELEV.
	NORTHING	EASTING	
620	7 628 598.2	577 279.1	99.6
621	7 628 635.7	577 334.7	101.9
622	7 628 625.9	577 341.1	98.0
623	7 628 611.2	577 348.5	96.3
624	7 628 572.5	577 295.6	96.6
625	7 628 576.6	577 289.0	97.0

RECORD DRAWING
NOT FOR CONSTRUCTION



DEW LINE CLEAN UP
LANDFILL MONITORING PLAN
PIN-4 BYRON BAY
USAF CLOSURE LANDFILL
FIGURE PIN-4.6





RECORD DRAWING
NOT FOR CONSTRUCTION



PERMANENT BENCHMARK (AS-BUILT)			
NO.	UTM COORDINATES		ELEV.
	NORTHING	EASTING	
BM-4	7 628 070.119	576 511.803	90.608
			25mm DIA. STEEL PIPE

- GENERAL NOTES:
- ALL COORDINATES ARE REFERENCED TO NAD83 (CSRS), UTM ZONE 12N. ALL ELEVATIONS REFER TO GEODETIC DATUM.
 - ALL DIMENSIONS ARE IN METRES UNLESS NOTED OTHERWISE.

LEGEND:

- BM-4 PERMANENT BENCHMARK LOCATION (1)
- 1110 COORDINATE POINT
- MW-02 MONITORING WELL LOCATION (3)
- MW-01 BACKGROUND MONITORING WELL LOCATION (1)
- VT-1 GROUND TEMPERATURE CABLE LOCATION (4)
- MONITORING SOIL SAMPLE LOCATION (4)
- BODY OF WATER

TIER II DISPOSAL FACILITY FINAL GRADING (AS-BUILT)			
NO.	UTM COORDINATES		ELEV.
	NORTHING	EASTING	
1110	7 627 978.4	576 372.9	94.4
1111	7 627 983.8	576 456.5	94.2
1112	7 627 935.0	576 467.3	93.2
1113	7 627 919.4	576 383.9	93.2

NOTE:
COORDINATE POINTS AND ELEVATIONS PROVIDED ARE TO THE FINAL GRADE OF THE TYPE 2 GRANULAR FILL CAP PRIOR TO THE PLACEMENT OF THE TYPE 1 GRANULAR FILL ON THE SIDE SLOPES.

TIER II DISPOSAL FACILITY MONITORING WELLS (AS-BUILT)			
NO.	UTM COORDINATES		ELEV.
	NORTHING	EASTING	
MW-01	7 628 016.6	576 448.1	89.8
MW-02	7 627 906.3	576 509.7	85.2
MW-03	7 627 878.8	576 436.9	84.7
MW-04	7 627 928.6	576 345.4	86.8

TIER II DISPOSAL FACILITY GROUND TEMPERATURE CABLES (AS-BUILT)			
NO.	UTM COORDINATES		ELEV.
	NORTHING	EASTING	
VT-1	7 627 991.0	576 439.6	94.4
VT-2	7 627 960.9	576 441.6	93.9
VT-3	7 627 952.9	576 398.7	93.8
VT-4	7 627 922.6	576 401.2	93.3

DEW LINE CLEAN UP
LANDFILL MONITORING PLAN

PIN-4 BYRON BAY

TIER II DISPOSAL FACILITY
FIGURE PIN-4.7



576 300 E

576 400 E

576 500 E

576 300 E

576 400 E

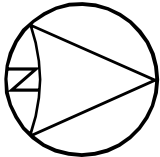
576 500 E

7 628 000 N

7 628 000 N

7 627 900 N

7 627 900 N



576 875 E

576 950 E

577 025 E

▲ BM-5

- GENERAL NOTES:
- ALL COORDINATES ARE REFERENCED TO NAD83 (CSRS), UTM ZONE 12N. ALL ELEVATIONS REFER TO GEODETIC DATUM.
 - ALL DIMENSIONS ARE IN METRES UNLESS NOTED OTHERWISE.

LEGEND:

- ▲ BM-5 PERMANENT BENCHMARK LOCATION (1)
- 10' COORDINATE POINT
- MONITORING SOIL SAMPLE LOCATION (3)

7 627 950 N

7 627 950 N

AIRSTRIp LANDFILL (LOBE B)

■ P4-24

■ P4-23

■ P4-22

PERMANENT BENCHMARK (AS-BUILT)			
NO.	UTM COORDINATES		ELEV.
	NORTHING	EASTING	
BM-5	7 627 986.564	576 909.188	87.778
25mm DIA. STEEL PIPE			

AIRSTRIp LANDFILL (LOBE B) REGRADED (AS-BUILT)			
NO.	UTM COORDINATES		ELEV.
	NORTHING	EASTING	
701	7 627 929.2	576 921.9	87.0
702	7 627 923.9	576 935.4	87.0
703	7 627 908.2	576 953.6	86.9
704	7 627 895.4	576 946.2	86.6
705	7 627 897.5	576 935.3	86.6
706	7 627 905.2	576 916.3	86.5
707	7 627 912.2	576 916.8	86.7

RECORD DRAWING
NOT FOR CONSTRUCTION



DEW LINE CLEAN UP
LANDFILL MONITORING PLAN

PIN-4 BYRON BAY

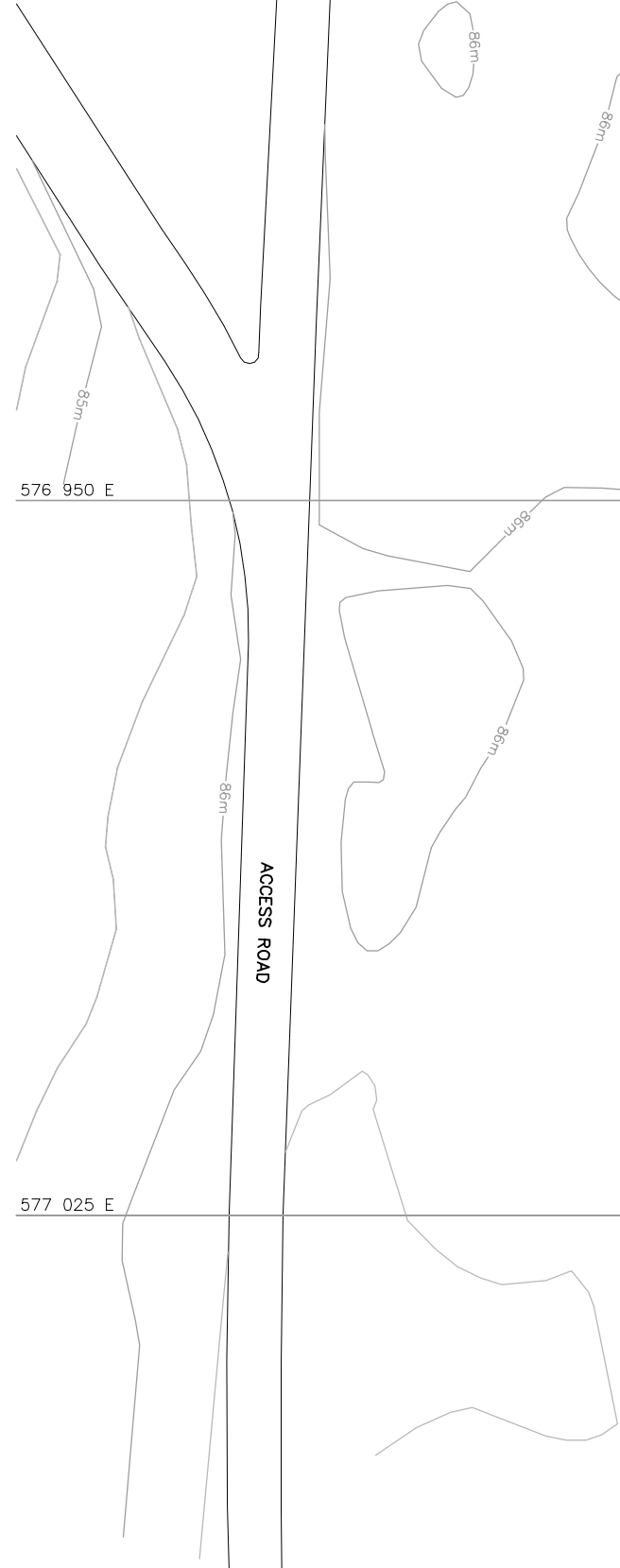
AIRSTRIp LANDFILL LOBE B
FIGURE PIN-4.8

576 875 E

576 950 E

577 025 E

ACCESS ROAD



PHOTOGRAPHIC LOG



Site Name: PIN-4

Site Location: Byron Bay, NU

Project No.
60263359

Photo No.
1

Date:
July 9,
2012

Direction Photo
Taken:

South

Description:

Type 2 placed on Tier II
DF.



Photo No.
2

Date:
July 10,
2012

Direction Photo
Taken:

West

Description:

Lift 7 Placed on Tier II DF



PHOTOGRAPHIC LOG



Site Name: PIN-4

Site Location: Byron Bay, NU

Project No.
60263359

Photo No.
3

Date:
July 13,
2012

**Direction Photo
Taken:**

North

Description:

Lift 8 Being Watered on
Tier II DF.



Photo No.
4

Date:
July 14,
2012

**Direction Photo
Taken:**

West

Description:

Lift 8 on Tier II DF
being watered and
spread.



PHOTOGRAPHIC LOG



Site Name: PIN-4

Site Location: Byron Bay, NU

Project No.
60263359

Photo No.
5

Date:
July 15,
2012

Direction Photo
Taken:

North

Description:

Lift 9 Being Compacted on
Tier II.



Photo No.
6

Date:
July 16,
2012

Direction Photo
Taken:

South

Description:

Lift 9 Being Compacted.



PHOTOGRAPHIC LOG



Site Name: PIN-4

Site Location: Byron Bay, NU

Project No.
60263359

Photo No.
7

Date:
July 18,
2012

Direction Photo Taken:

South

Description:

Open Section of NHWL.



Photo No.
8

Date:
July 19,
2012

Direction Photo Taken:

South

Description:

Packing Type 1 on USAF Regrade.



PHOTOGRAPHIC LOG



Site Name: PIN-4

Site Location: Byron Bay, NU

Project No.
60263359

Photo No.
9

Date:
July 19,
2012

**Direction Photo
Taken:**

Not Available.

Description:

Final Lift of Type 2 on Tier
II DF.



Photo No.
10

Date:
July 21,
2012

**Direction Photo
Taken:**

South

Description:

Type 1 Placed on S Slope
of Tier II DF.



PHOTOGRAPHIC LOG



Site Name: PIN-4

Site Location: Byron Bay, NU

Project No.
60263359

Photo No.
11

Date:
July 22,
2012

Direction Photo Taken:

North

Description:

Type 1 Placed on N Slope of Tier II.



Photo No.
12

Date:
July 22,
2012

Direction Photo Taken:

West.

Description:

Type 3 Placed on Tier II DF.



PHOTOGRAPHIC LOG



Site Name: PIN-4

Site Location: Byron Bay, NU

Project No.
60263359

Photo No.
13

Date:
July 24,
2012

Direction Photo Taken:

West

Description:

Type 6 placed on
NHWL



Photo No.
14

Date:
July 25,
2012

Direction Photo Taken:

South

Description:

Type 2 Being Spread on
NHWL.



PHOTOGRAPHIC LOG



Site Name: PIN-4

Site Location: Byron Bay, NU

Project No.
60263359

Photo No.
15

Date:
July 27,
2012

Direction Photo Taken:

Not Available.

Description:

Reshaped area E of Tier II.



Photo No.
16

Date:
July 29,
2012

Direction Photo Taken:

North

Description:

Open Pit in NHWL for Camp De-Mob.



PHOTOGRAPHIC LOG



Site Name: PIN-4

Site Location: Byron Bay, NU

Project No.
60263359

Photo No.
17

Date:
July 30,
2012

**Direction Photo
Taken:**

North

Description:

BA 18 Reclamation in
Progress.

