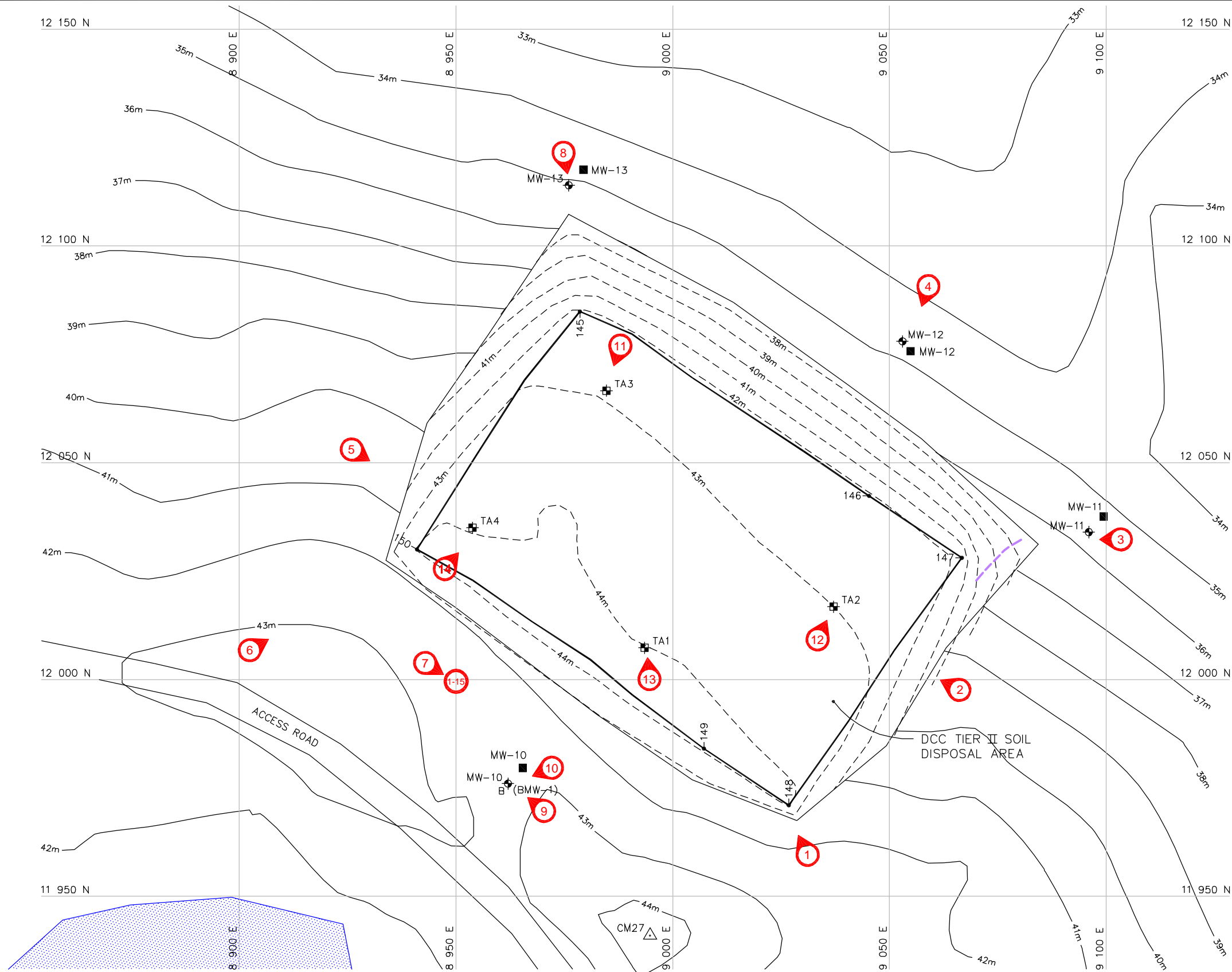


Path: S:\AutoCad\acad-Prj\2005\50-714 DEW Cambridge\1B-Draft-Oct2005\ Plotted on: Oct 21, 2005-3:15pm Edited by: Public



SURVEY CONTROL MONUMENTS				
NO.	COORDINATES		ELEV.	DESCRIPTION
	NORTHING	EASTING		
27	11 940.993	8 994.768	44.981	GNWT 500 9018

LEGEND:

- CM27 SURVEY CONTROL MONUMENT
- MONITORING WELL LOCATION
- THERMISTOR
- 145 COORDINATE POINT
- MONITORING SOIL SAMPLE LOCATION
- 2005 PHOTOGRAPH NUMBER AND LOCATION (2 = TI12)
- SURFACE CRACK

MONITORING WELLS			
NO.	COORDINATES		ELEV.
	NORTHING	EASTING	
MW-10	11 976	8 962	43.6
MW-11	12 034	9 096	35.1
MW-12	12 078	9 053	34.9
MW-13	12 114	8 976	35.3

THERMISTORS			
NO.	COORDINATES		ELEV.
	NORTHING	EASTING	
TA1	12 007.3	8 993.5	43.8
TA2	12 016.8	9 037.1	43.4
TA3	12 066.6	8 984.7	43.0
TA4	12 035.0	8 953.8	44.2

COORDINATE POINTS			
NO.	COORDINATES		ELEV.
	NORTHING	EASTING	
145	12 084.9	8 978.6	42.4
146	12 042.4	9 045.3	42.2
147	12 028.1	9 066.7	41.8
148	11 971.0	9 026.8	44.1
149	11 984.1	9 007.2	44.1
150	12 030.0	8 941.0	44.1

DATA SOURCES:
DRAWING BY UMA
CM-RD06.DWG
DATED: 02/04/10
DEW LINE CLEAN UP
LANDFILL MONITORING PLAN
CAM-M - CAMBRIDGE BAY
DCC TIER II SOIL DISPOSAL AREA
FIGURE CAM-M.6

0 5 10 20 30 Metres
SCALE 1:1000

REVIEWED BY : DL/AK
PREPARED BY : PW/NT0
DATE ISSUED : OCTOBER, 2005
PROJECT NO. : 50-714
FILE NAME : 50714-1B-07.dwg
REVISION : 0

Project: DEW Line Monitoring
Location: Cambridge Bay, Nunavut
Client: Defence Construction Canada

D.C.C TIER II SOIL DISPOSAL AREA



Figure No. F-1