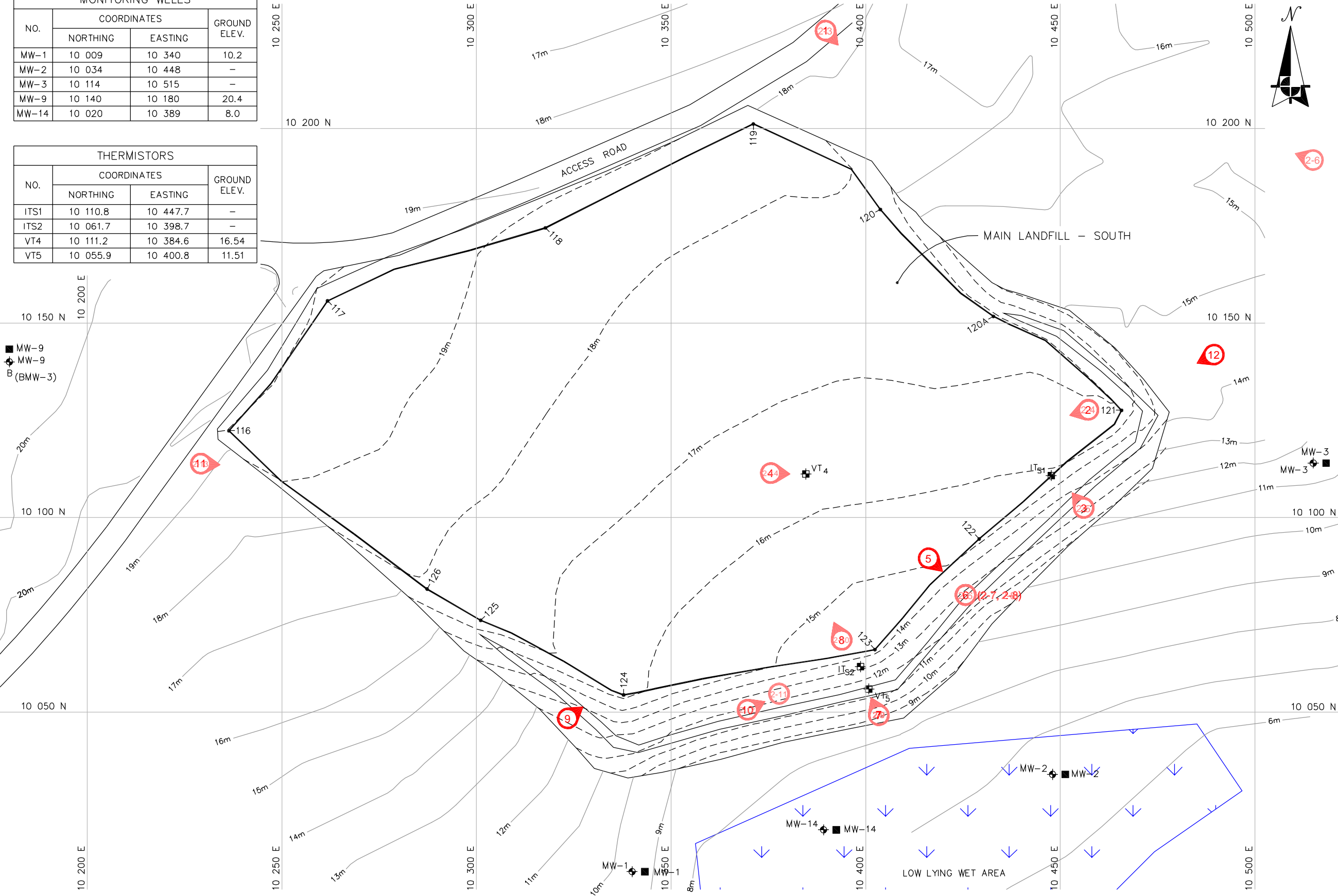


Path: Si:\AutoCad\acad-Prj\2005\50-714 DEW Cambridge\1B-Draft-Oct2005\ Plotted on: Oct 21, 2005-3:08pm Edited by: Public

MONITORING WELLS			
NO.	COORDINATES		GROUND ELEV.
	NORTHING	EASTING	
MW-1	10 009	10 340	10.2
MW-2	10 034	10 448	-
MW-3	10 114	10 515	-
MW-9	10 140	10 180	20.4
MW-14	10 020	10 389	8.0

THERMISTORS			
NO.	COORDINATES		GROUND ELEV.
	NORTHING	EASTING	
ITS1	10 110.8	10 447.7	-
ITS2	10 061.7	10 398.7	-
VT4	10 111.2	10 384.6	16.54
VT5	10 055.9	10 400.8	11.51

■ MW-9
◆ MW-9
B (BMW-3)



LEGEND:

- ◆ MONITORING WELL LOCATION
- VT ◆ VERTICAL THERMISTOR
- IT ◆ INCLINED THERMISTOR
- 116 • COORDINATE POINT
- MONITORING SOIL SAMPLE LOCATION
- 6 PHOTOGRAPH NUMBER AND LOCATION(6 = MLFS-6)

COORDINATE POINTS			
NO.	COORDINATES		ELEV.
	NORTHING	EASTING	
116	10 122.3	10 236.4	19.9
117	10 155.7	10 261.8	19.8
118	10 174.5	10 317.7	18.5
119	10 201.2	10 371.2	18.6
120	10 179.2	10 403.8	17.6
120A	10 151.7	10 432.9	17.1
121	10 127.6	10 465.8	16.9
122	10 094.5	10 429.2	15.3
123	10 066.1	10 402.4	14.4
124	10 054.4	10 337.9	16.3
125	10 073.6	10 301.1	17.6
126	10 081.7	10 287.3	17.9

DATA SOURCES:
DRAWING BY UMA
CM-RD03.DWG
DATED: 02/04/10
DEW LINE CLEAN UP LANDFILL MONITORING
PLAN CAM-M - CAMBRIDGE BAY
MAIN LANDFILL SOUTH FIGURE CAM-M.3

0 5 10 20 30 Metres
SCALE 1:1000

REVIEWED BY : DL/AK
PREPARED BY : PW/NT0
DATE ISSUED : OCTOBER, 2005
PROJECT NO. : 50-714
FILE NAME : 50714-1B-02.dwg
REVISION : 0

Project: DEW Line Montioring
Location: Cambridge Bay, Nunavut
Client: Defence Construction Canada

MAIN LANDFILL SOUTH



Figure No. B-1