

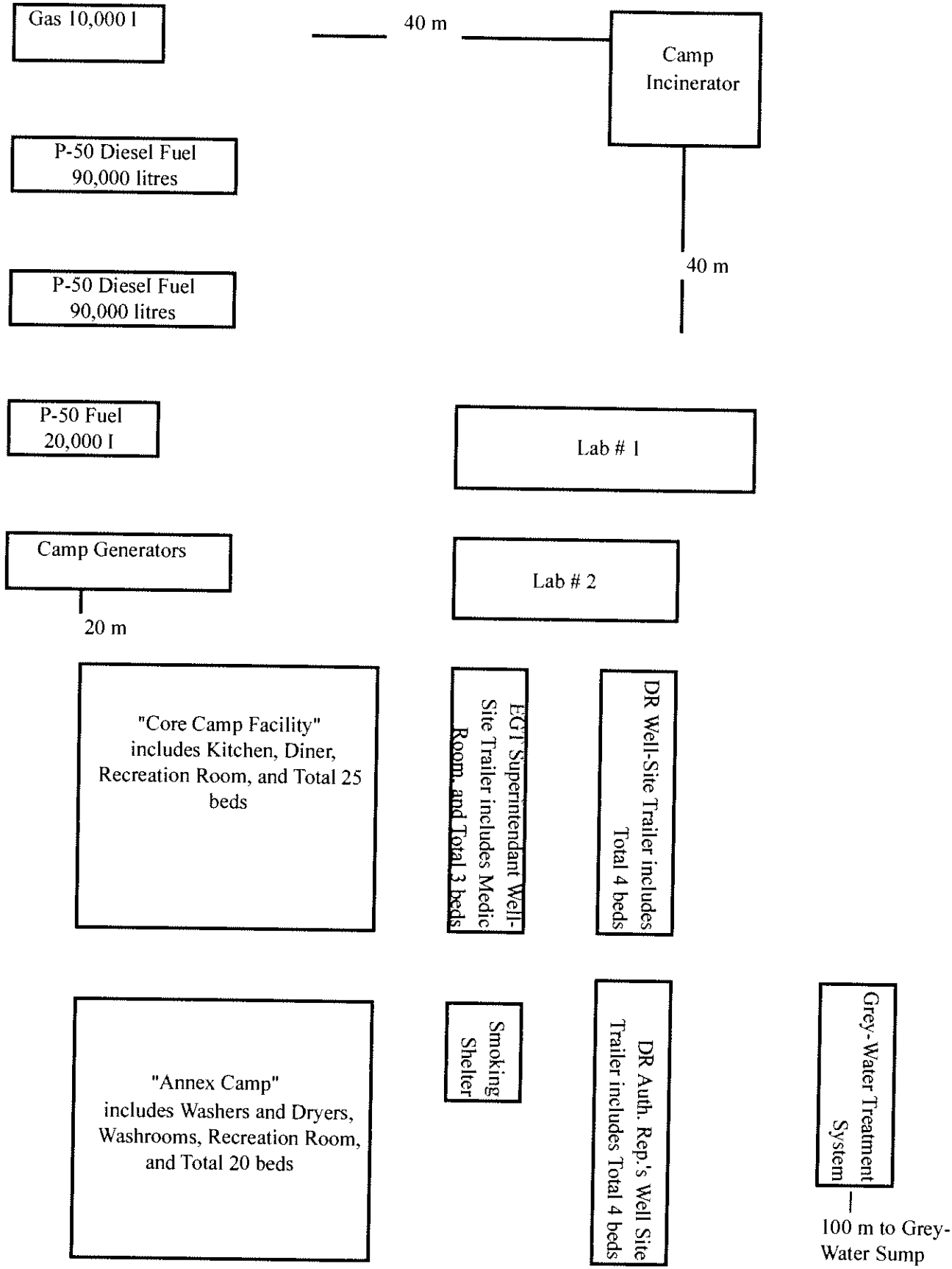
PIN B SUBMITTAL: CONSTRUCTION CAMP LOCATION PLAN

EGT will supply, set up, and support camp facilities in the Station Area of Clifton Point, NU, see attached map. The camp facilities site was selected for its central location to all areas of work, and is within walking distance of the majority of labour intensive work. The camp facilities site does not sit on any required work described in the Tender documents, is level, on a natural/native gravel pad and is greater than 100 meters from any water body or courses.

Please refer to the following attached:

- I. Camp and Facilities Layout
- II. Camp Location
- III. Complex Floor Plan

PLAN B: CONSTRUCTION CAMP LOCATION PLAN

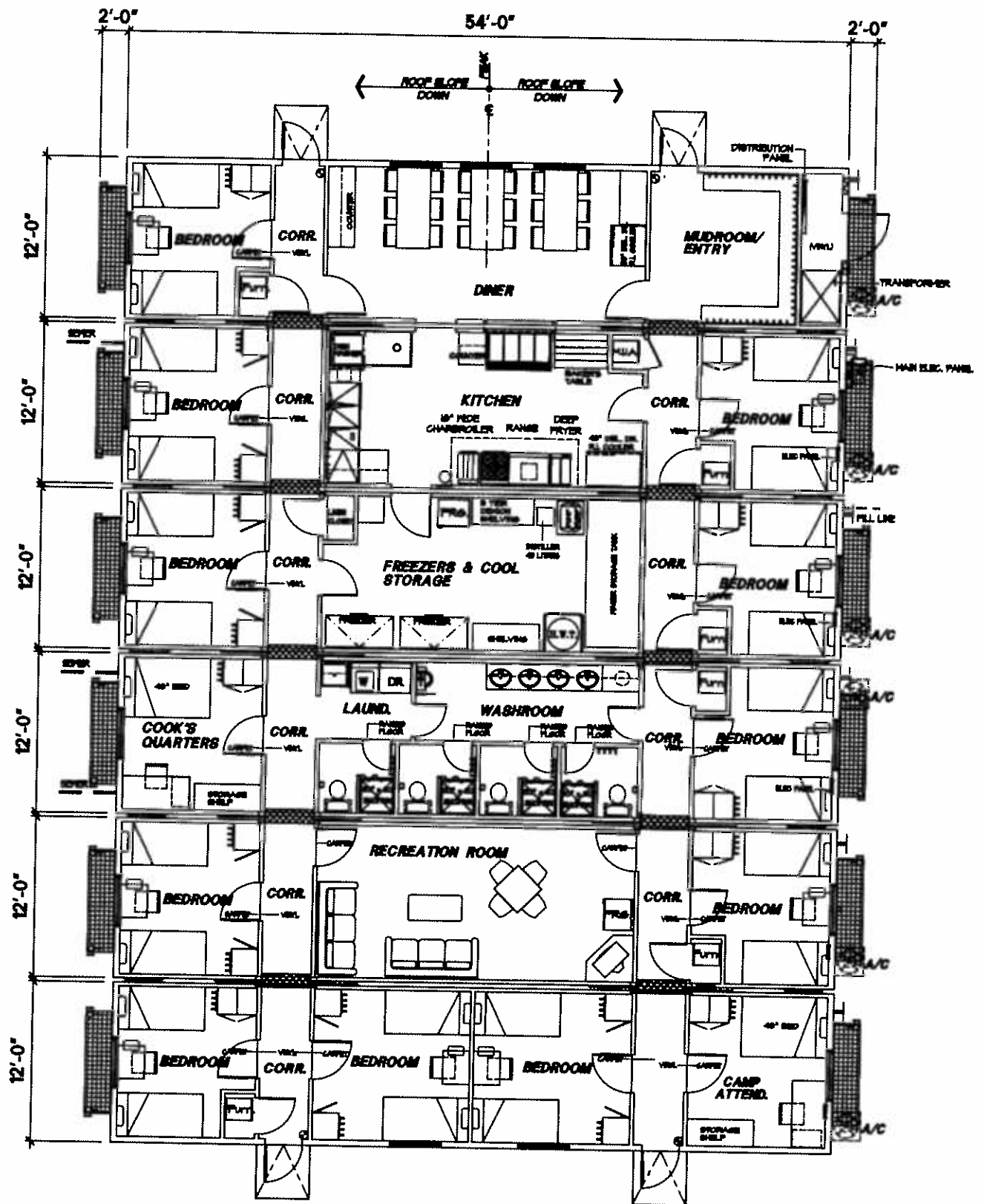


C-3	7 878 208.7	435 204.0
C-4		

NO.	NORTHING	435 210.8
F-1	7 878 176.7	435 215.3
F-2	7 878 172.4	435 212.1
F-3	7 878 168.7	435 207.4
F-4	7 878 173.1	



CONTAMINATED AREA SA-2-11	
COORDINATES	
NORTHING	EASTING
7 878 148.2	435 216.2
7 878 146.7	435 211.5
7 878 150.8	435 216.8



COMPLEX FLOOR PLAN

SCALE: 3/32"=1'-0"

SHANCO
CAMP SERVICES LTD.

by VIC
scale 3/32"=1'-0"

date 09-08-2001
sheet number F-194

SIX UNIT SIDE BY SIDE COMPLEX

COMPLEX FLOOR PLAN