

APPENDIX 12

CONTWOYTO LAKE
REMEDATION PROJECT

SPILL CONTINGENCY PLAN

Conwtoyto Lake Weather Station Remediation Spill Contingency Plan

Table of Contents

1	Introduction and Project Details	1
1.1	Company Name, site name, site location and mailing address	1
1.2	Effective Date of Spill Contingency Plan	1
1.3	Revisions to Spill Contingency Plan	1
1.4	Purpose and Scope	2
1.5	Company Environmental Policy	2
1.6	Project Description	2
1.7	Site Description	3
1.8	List of Hazardous Materials	3
1.9	Existing Preventative Measures	4
1.10	Process for Staff Response to Media and Public Inquiries	4
2	Action Plan	7
2.1	Potential Environmental Impacts of Spill	7
2.2	Procedures	8
2.2.1	Procedures for Initial Actions	8
2.2.2	Spill Reporting Procedures	8
2.2.3	Procedures for Containing and Controlling the Spill	9
2.2.4	Procedures for Transferring, Storing and Managing Spill Related Wastes 11	
2.2.5	Procedures for Restoring Affected Areas	12
3	Resource Inventory	12
3.1	On-site Resources	12
3.2	Off-site Resources	13
4	Training Program	14
4.1	Outline of Training Program	14
	Appendix A – Site Location Map	15
	Appendix B – Material Safety Data Sheets	16
	Appendix C – NU Spill Report Form	34
	Appendix D – Instructions for Completing the Spill Report Form	36
	Appendix E – Immediately Reportable Spill Quantities	37

Prepared by:
Delta Engineering Ltd./Carter Industries Ltd. – A Joint Venture

1 Introduction and Project Details

Delta Engineering Ltd. and Carter Industries Ltd. have joined as a joint venture effort for this project. For conciseness, this joint venture will be referred to as DELTA.

1.1 Company Name, site name, site location and mailing address

The following table present key corporate information pertaining to DELTA.

Table 1: Key Corporate Information Pertaining to TLICHO

JOINT VENTURE NAME	Delta Engineering Ltd./Carters Industries Ltd. – A Joint Venture
CONTACT PERSON	Robert Johnson, P.Eng General Manager Tel: (867) 669 9481 Fax: (867) 669 9482 deltaengineeringltd@gmail.com
PROJECT OFFICE LOCATION	P.O. Box 1447 Yellowknife, NT, X1A 2P1

1.2 Effective Date of Spill Contingency Plan

October 10/12 to March 31, 2016

1.3 Revisions to Spill Contingency Plan

REVISION LIST

The following table tracks the process of this Spill Contingency Plan (SCP) revisions and ensures that all stakeholders have the most up to date copy of the plan. The table must be updated each time a revision is made to the Spill Contingency Plan.

Table 2: Table of Revisions

VERSION # or REVISION #	TEES/AEL APPROVAL	DATE	CROWN APPROVAL	DATE	SECTIONS REVISED	COMMENTS	REVISION DISTRIBUTION DATE
Version #1	Robert E. Johnson, Project Manager	Novem ber 15/2013			ALL	FIRST APPROVAL	

Prepared by:
Delta Engineering Ltd./Carter Industries Ltd. – A Joint Venture

--	--	--	--	--	--	--	--

1.4 Purpose and Scope

The purpose of this plan is to outline response actions for potential spills of any size, including a worst case scenario for Delta and all subcontractors on site at the Conwtoyto Lake Weather Station Remediation. The plan identifies key response personnel and their roles and responsibilities in the event of a spill, as well as the equipment and other resources available to respond to a spill. It details spill response procedures that will minimize potential health and safety hazards, environmental damage, and clean-up efforts. The plan has been prepared to ensure quick access to all the information required in responding to a spill.

1.5 Company Environmental Policy

DELTA is committed to the concept of sustainable development and the protection of the environment and human health. DELTA's environmental, health and safety policy is to:

- protect employees, the public and the environment
- comply with all applicable legislation, regulations, and authorizations
- work proactively with federal, territorial and Aboriginal governments, other relevant organizations, and the general public, on all aspects of environmental protection
- anticipate future spill control requirements and make provision for them
- keep employees, contractors, Inspectors, Land and Water Boards, appropriate governments (Aboriginal, federal and territorial), and the public informed of any changes at the site.

The plan is presented to all staff during their on-site orientation sessions. During the worker orientation seminar, training sessions are scheduled to ensure employees have an understanding of the steps to be undertaken in the event of a spill. All spill kits are located wherever fuel is stored or transferred. Workers will be trained in using spill equipment and spill response.

1.6 Project Description

The aim of this project is to remediate the site and to leave as minimal presence in the area as possible. The footprint left behind must be acceptable to the affected aboriginal people for their future use and to ensure the safety of local wildlife and plants.

This project is expected to span approximately 1 year. Work will commence Mid March, 2013. Mobilization will occur in the months of March/April/May and all supplies and equipment will be supplied via Ice Strip. Summer mobilization will consist of airlift via Twin Otter Planes on floats and wheels, as required. Winter mobilization will occur by air over an ice strip utilizing heavy lift aircraft including Buffalo DHC5, C130 Hercules

Prepared by:
Delta Engineering Ltd./Carter Industries Ltd. – A Joint Venture

and Skyvan. Delta plans to build and maintain the ice strip for roughly one month to accommodate mobilization.

Remediation activities for Conwtoyto Lake Weather Station Remediation consist of the following tasks:

1. Mobilization and demobilization
2. Excavating, sorting and treating of hydrocarbon contaminated soil,
3. Hazardous material collection and disposal,
4. Building demolition,
5. Barrel collection and removal,
6. Installing monitoring
7. Site Surveying
8. Surface debris collection and removal from site

1.7 Site Description

Conwtoyto Lake Weather Station is located approximately 390 km North East of Yellowknife at 65.5° north latitude and 110.37° west longitude. The Site consists of an abandoned weather station on an island on Conwtoyto Lake. The site is accessible by an airstrip and float plane.

1.8 List of Hazardous Materials

The following table shows the fuel requirements for the duration of the project. The following figure describes the amount of fuel that will contain hazardous materials at the site.

Table 3: Hazardous Materials (Fuel)

Year	Fuel Requirement (L)			Mobilization Approach
	Diesel	Gas	Propane	
2013	70,000	2500	5000	Airlift

Propane is used for the kitchen and is stored in propane cylinders inside the camp perimeter. Smaller amounts of other petroleum products and oils/lubricants are stored on-site in the lined fuel containment facility.

Waste oil is stored in empty 20 L pails and 205L drums and will be shipped off-site for processing at a licenced waste facility.

Sewage will be incinerated and grey water from the main camp complex will be processed through a Bio-Barrier Membrane Bio-Reactor and stored in bladders for testing and disposal. On average, there will be 10 people on site at any given time with no peak occupancy of over 15 persons.

Prepared by:
Delta Engineering Ltd./Carter Industries Ltd. – A Joint Venture

Nutrients used for hydrocarbon treatment will consist of fertilizer that will be supplied in 20kg bags and stored on pallets. The fertilizer is not hazardous and will be stored near the camp.

1.9 Existing Preventative Measures

Planning for an emergency situation is imperative, due to the nature of the materials stored on-site as well as the remoteness of the site. Along with the preventative measures outlined below, adequate training of staff and contractors is paramount.

All diesel requirements for the project will be airlifted to site in 205L drums. The fuel will be transferred into bladders in the fuel storage area.

The site superintendent or designate will conduct visual inspections to check for leaks and damage to the fuel storage containers, as well as for stained or discoloured soils around the fuel storage areas and motorized equipment. For example lids and caps are checked for tight seals. Regular maintenance and oil checks of all motorized equipment are also undertaken to avoid preventable leaks.

1.10 Process for Staff Response to Media and Public Inquiries

All inquiries are to be directed to AANDC.

Response Organization

The flow chart depicted in the below figure identifies the response organization and when applicable their alternates, as well as the chain of command for responding to a spill or release. The duties of various response personnel are summarized, contact information is provided including 24-hour phone numbers for responsible people and the location of communications equipment on site is discussed.

An immediately reportable spill is defined as a release of a substance that is likely to be an imminent environmental or human health hazard or meets or exceeds the volumes outlined in Appendix E. It must be reported to the NU 24-Hour Spill Report – 867-920-8130. Any spills less than these quantities do not need to be reported immediately to the spill reporting line. Rather, these minor spills will be tracked and documented by the company and submitted to the appropriate authority either immediately upon request or at a pre-determined reporting interval. If there is any doubt that the quantity spilled exceeds reportable levels, the spill will be reported to the NU 24-Hour Spill Report Line.

An emergency satellite phone is located in the field office. In the event of a spill involving danger to human life, this phone will be used to contact emergency response personnel in Yellowknife. In addition, all employees and contractors carry two-way radios for communication with the site superintendent and other staff on site.

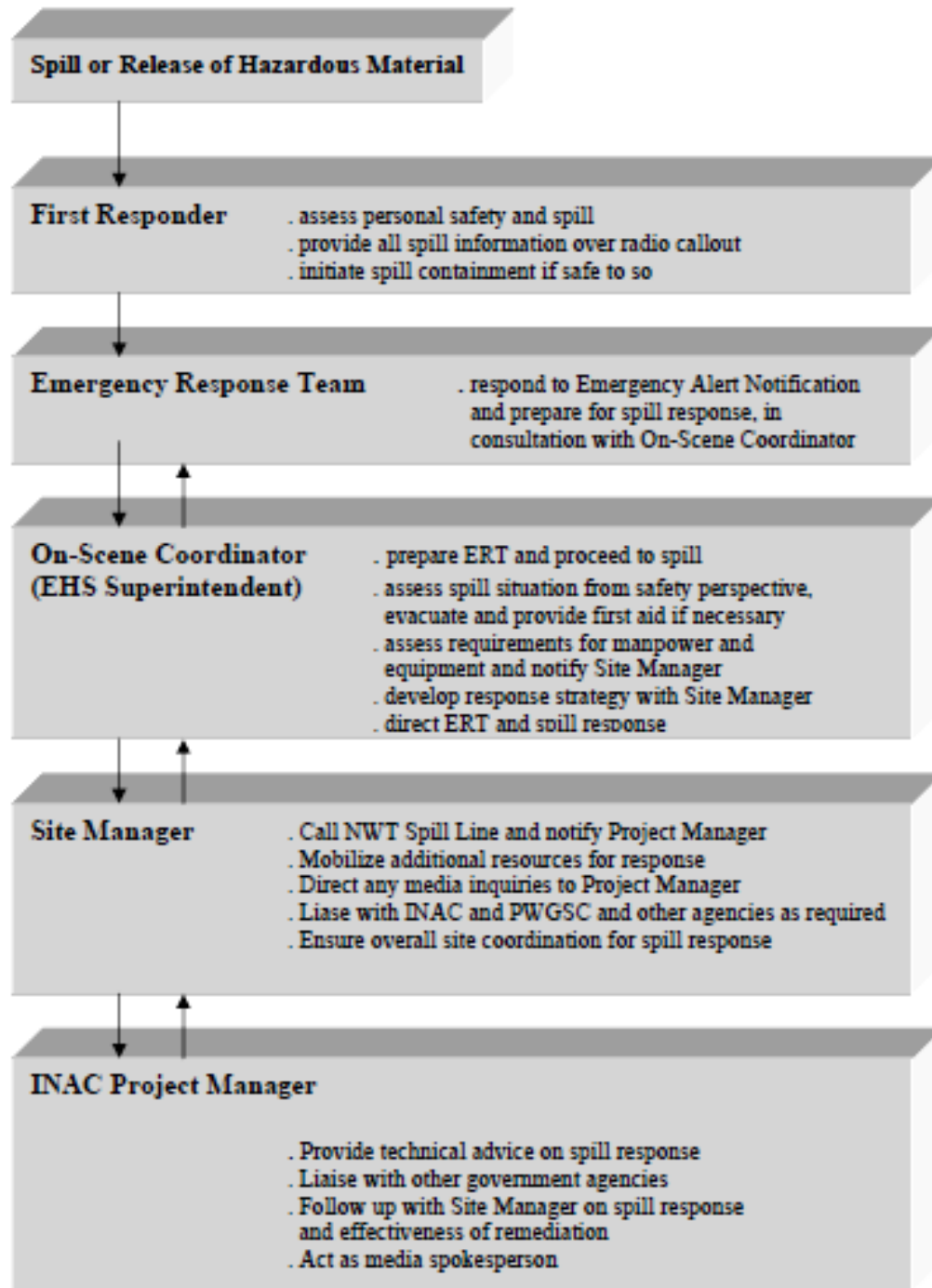
Following reporting of the spill to the site superintendent, he/she will report spills to the NU 24-Hour Spill Line as necessary. The site superintendent will also inform the head

Prepared by:
Delta Engineering Ltd./Carter Industries Ltd. – A Joint Venture

office for tracking spills in company databases and notify the head office in the event of media inquiries. The 24-hour emergency head office number is 867-446-4694.

Prepared by:
Delta Engineering Ltd./Carter Industries Ltd. – A Joint Venture

SPILL RESPONSE ORGANIZATION



For the organization chart above, the Site Manager is also the Site Superintendent.

NWT Spill Line will be NU Spill Line

INAC Project Manager will be AANDC Project Manager

Prepared by:

Delta Engineering Ltd./Carter Industries Ltd. – A Joint Venture

2 Action Plan

2.1 Potential Environmental Impacts of Spill

Overall for all hazardous materials discussed below, impacts are lower during winter as snow is a natural sorbent and ice forms a barrier limiting or eliminating soil or water contamination, thus spills can be more readily recovered when identified and reported.

Gasoline

Environmental Impacts: Gasoline may be harmful to wildlife and aquatic life. It is not readily biodegradable and has the potential for bioaccumulation in the environment. Gasoline is quick to volatilize. Runoff into water bodies must be avoided.

Worst Case Scenario: All fuel drums were punctured or open simultaneously and contents seeped into surrounding soil and water bodies. This could cause illness or death to aquatic life and indirectly affect wildlife feeding from the land and water.

Diesel Fuel

Environmental Impacts: Diesel may be harmful to wildlife and aquatic life. It is not readily biodegradable and has the potential for bioaccumulation in the environment. Diesel burns slowly and thus risk to the environment is reduced during recovery as burn can be more readily contained compared with volatile fuels. Runoff into water bodies must be avoided.

Worst Case Scenario: All fuel drums were punctured or open simultaneously and contents seeped into surrounding soil and water bodies. This could cause illness or death to aquatic life and indirectly affect wildlife feeding from the land and water.

Propane

Environmental Impacts: Propane may be harmful to wildlife and the surrounding environment. It has the potential to accumulate in the environment. Propane is extremely volatile and is the most flammable material stored on-site, thus immediate impacts to the surrounding environment are a concern.

Worst Case Scenario: All cylinders were punctured or failed simultaneously and contents leaked into the surrounding environment and ignited leading to an explosion. This could cause serious environmental impacts in the immediate surroundings. Safety during emergency response to a propane spill is of the utmost concern.

Waste Oil and Miscellaneous Oils/Grease

Environmental Impacts: Waste Oils may be harmful to wildlife and aquatic life. It is not readily biodegradable and has the potential for bioaccumulation in the environment. Runoff into water bodies must be avoided.

Prepared by:
Delta Engineering Ltd./Carter Industries Ltd. – A Joint Venture

Worst Case Scenario: All storage drums were punctured or open simultaneously and contents seeped into surrounding soil and water bodies. This could cause illness or death to aquatic life and indirectly affect wildlife feeding from the land and water.

2.2 Procedures

2.2.1 Procedures for Initial Actions

- Ensure safety of all personnel.
- Assess spill hazards and risks.
- Remove all sources of ignition.
- Stop the spill if safely possible e.g. shut of pump, replace cap, tip drum upward, patch leaking hole. Use the contents of the nearest spill kit to aid in stopping the spill if it is safe to do so. Tyvek suits and chemical master gloves are located in the spill kit and should be worn immediately if there is any risk of being in contact with fuel.
- No matter what the volume is, notify site superintendent via two-way radio (all employees carry these, as well as on-site contractors if they are not accompanied by an employee).
- Contain the spill – use contents of spill kits to place sorbent materials on the spill, or use shovel to dig dike to contain spill. Methods will vary depending on the nature of the spill. See section – Procedures for Containing and Controlling the Spill for more details.

2.2.2 Spill Reporting Procedures

Report spill immediately to site superintendent, who will determine if spill is to be reported to the NU 24-Hour Spill Line at 867-920-8130.

Each spill kit, as well as the office and site superintendent, will have copies of the NU Spill Report form to be filled out (see Appendix C). Fill out and fax or e-mail the Spill Report to the staff of the NU 24-Hour spill line. Also fax or e-mail the report to the head office in Yellowknife.

NU 24-Hour Spill Line Phone: 867-920-8130

NU 24-Hour Spill Line Fax: 867-873-6924

NU 24-Hour Spill Line E-mail: spills@gov.nu.ca

Head Office in Yellowknife: Delta Engineering Ltd. Phone: 867-446-4694

Prepared by:
Delta Engineering Ltd./Carter Industries Ltd. – A Joint Venture

2.2.3 Procedures for Containing and Controlling the Spill

- Initiate spill containment by first determining what will be affected by the spill.
- Assess speed and direction of spill and cause of movement (water, wind and slope).
- Determine best location for containing spill, avoiding any water bodies.
- Have a contingency plan ready in case spill worsens beyond control or if the weather or topography impedes containment.

2.2.3.1 Specific Spill Containment Methods for Land, Water, Ice and Snow

1) Containment of Spills on Land

Spills on land include spills on rock, gravel, soil and/or vegetation. It is important to note that soil is a natural sorbent, thus spills on soil are generally less serious than spills on water as contaminated soil can be more easily recovered. Generally spills on land occur during the late spring, summer or fall when snow cover is at a minimum. It is important that all measures be undertaken to avoid spills reaching open water bodies.

Dykes

Dykes can be created using soil surrounding a spill on land. These dykes are constructed around the perimeter or down slope of the spilled fuel. A dyke needs to be built up to a size that will ensure containment of the maximum quantity of fuel that may reach it. A plastic tarp can be placed on and at the base of the dyke such that fuel can pool up and subsequently be removed with sorbent materials or by pump into barrels or bags. If the spill is migrating very slowly a dyke may not be necessary and sorbents can be used to soak up fuels before they migrate away from the source of the spill.

Trenches

Trenches can be dug out to contain spills as long as the top layer of soil is thawed. Shovels, pick axes or a loader can be used depending on the size of trench required. It is recommended that the trench be dug to the bedrock or permafrost, which will then provide containment layer for the spilled fuel. Fuel can then be recovered using a pump or sorbent materials.

2) Containment of Spills on Water

Spills on water such as rivers, streams or lakes are the most serious types of spills as they can negatively impact water quality and aquatic life. All measures need to be undertaken to taken to contain spills on open water.

Booms

Booms are commonly used to recover fuel floating on the surface of lakes or slow moving streams. They are released from the shore of a water body to create a circle around the spill. If the spill is away from the shoreline, a boat will need to be used to reach the spill, then the boom can be set out. More than one boom may be used at once. Booms may be also be used in streams and should be set out at an angle to the current.

Prepared by:
Delta Engineering Ltd./Carter Industries Ltd. – A Joint Venture

Booms are designed to float and have sorbent materials built into them to absorb fuels at the edge of the boom. Fuel contained within the circle of the boom will need to be recovered using sorbent materials or pumps and placed into barrels or bags for disposal.

Weirs

Weirs can be used to contain spills in streams and to prevent further migration downstream. Plywood or other materials found on site can be placed into and across the width of the stream, such that water can still flow under the weir. Spilled fuel will float on the water surface and be contained at the foot of the weir. It can then be removed using sorbents, booms or pumps and placed into barrels or plastic bags.

Barriers

In some situations barriers made of netting or fence material can be installed across a stream, and sorbent materials placed at the base to absorb spilled fuel. Sorbents will need to be replaced as soon as they are saturated. Water will be allowed to flow through. This is very similar to the weir option discussed above.

Note that in some cases, it may be appropriate to burn fuel or to let volatile fuels such as gasoline evaporate after containment on the water surface. This should only be undertaken in consultation with, and after approval from the AANDC or lead agency Inspector.

3) Containment of Spills on Ice

Spills on ice are generally the easiest spills to contain due to the predominantly impermeable nature of the ice. For small spills, sorbent materials are used to soak up spilled fuel. Remaining contaminated ice/slush can be scraped and shovelled into a plastic bag or barrel. However, all possible attempts should be made to prevent spills from entering ice covered waters as no easy method exists for containment and recovery of spills if they seep under ice.

Dykes

Dykes can be used to contain fuel spills on ice. By collecting surrounding snow, compacting it and mounding it to form a dyke down slope of the spill, a barrier is created thus helping to contain the spill. If the quantity of spill is fairly large, a plastic tarp can be placed over the dyke such that the spill pools at the base of the dyke. The collected fuel can then be pumped into barrels or collected with sorbent materials.

Trenches

For significant spills on ice, trenches can be cut into the ice surrounding and/or down slope of the spill such that fuel is allowed to pool in the trench. It can then be removed via pump into barrels, collected with sorbent materials, or mixed with snow and shovelled into barrels or bags.

Burning

Prepared by:
Delta Engineering Ltd./Carter Industries Ltd. – A Joint Venture

Burning should only be considered if other approaches are not feasible, and is only to be undertaken with the permission of the AANDC or lead agency Inspector.

4) Containment of Spills on Snow

Snow is a natural sorbent, thus as with spills on soil, spilled fuel can be more easily recovered. Generally, small spills on snow can be easily cleaned up by raking and shovelling the contaminated snow into plastic bags or empty barrels, and storing these at an approved location.

Dykes

Dykes can be used to contain fuel spill on snow. By compacting snow down slope from the spill, and mounding it to form a dyke, a barrier or berm is created thus helping to contain the spill. If the quantity of spill is fairly large, a plastic tarp can be placed over the dyke such that the spill pools at the base of the dyke. The collected fuel/snow mixture can then be shovelled into barrels or bags, or collected with sorbent materials.

5) Worst Case Scenarios

Dealing with spilled fuel which exceeds the freeboard of a dyke or barrier would present a possible worst case scenario for the Mine site. To contain the overflow, a trench or collection pit would have to be created downstream of the spill to contain the overflow.

Another worst case scenario would be an excessive spill on water may be difficult to contain with the booms present at the site. In this case, an emergency response mobile unit would have to be called in to deal with the spill using appropriate equipment.

2.2.4 Procedures for Transferring, Storing and Managing Spill Related Wastes

In most cases, spill cleanups are initiated at the far end of the spill and contained moving toward the center of the spill. Sorbent socks and pads are generally used for small spill clean up. A pump with attached fuel transfer hose can suction spills from leaking containers or large accumulations on land or ice, and direct these larger quantities into empty drums. Hand tools such as cans, shovels, and rakes are also very effective for small spills or hard to reach areas. Heavy Equipment can be used if deemed necessary, and given space and time constraints.

Used sorbent materials are to be placed in plastic bags for future disposal. All materials mentioned in this section are available in the spill kits located at the fuel storage and in camp. Following clean-up, any tools or equipment used will be properly washed and decontaminated, or replaced if this is not possible.

Spills will be containerized either in 45 gallon drums, or lined Bono Bags, depending on where the spill occurred (water or soil) and the area impacted. The drums and Bono bags with the contaminated materials will be stored at the fuel storage area. Quantities will be logged. The contaminated materials will be backhauled to Yellowknife or treated on site. A waste manifest will be produced to track the movement of this material from the time

Prepared by:
Delta Engineering Ltd./Carter Industries Ltd. – A Joint Venture

of spill, to the backhaul from Conwtoyto to Yellowknife, and then acceptance at the licenced waste facility for processing.

2.2.5 Procedures for Restoring Affected Areas

Once a spill of reportable size has been contained, DELTA will consult with the AANDC or Lead Agency Inspector assigned to the file to determine the level of cleanup required. The Inspector may require a site-specific study to ensure appropriate clean up levels are met. Criteria that may be considered include natural biodegradation of oil, replacement of soil and re-vegetation.

3 Resource Inventory

3.1 On-site Resources

Spill Kits are located throughout the sites (fuel storage area and camp). The contents are described below. In addition, earth moving and other equipment located at site is also listed below.

Contents of Spill Kits

- Tyvek splash suits
- pairs of chemical master gloves
- 10 large bags with ties for temporary use
- 2 oil only booms (5' x 10')
- 50 oil only mats (16' x 20')
- sorbent socks
- 10 sorbent pads
- 2 large tarps and rolls of polyethylene sheeting
- 1 roll duct tape
- 1 utility knife
- 1 field notebook and pencil
- 1 rake
- 1 pick axe
- aluminum scoop shovels
- 1 instruction binder
- Aquaguard Skimmer
- Empty Drums
- Hatch Removal Sock

Earth Moving and Other Equipment Resources

- Dozer
- Excavator
- Loader
- Skid steer

Prepared by:
Delta Engineering Ltd./Carter Industries Ltd. – A Joint Venture

- Haul truck

3.2 Off-site Resources

The following table lists the Project Management Team and applicable contacts for spill response.

Project Management Staff and Emergency Numbers

Name	Position	CONTACT #	ORGANIZATION
PROJECT MANAGEMENT			
Janice Lee	Project Manager	Ph: 867-766-8364 Cell: 867-445-2424	Public Works and Government Services Canada
Erika Solski	Project Manager	Ph: 867-975-4577	AANDC, CARD
Robert Johnson	Project Manager	Cell: (867) 446-4694	Delta Engineering Ltd.
Shawn Carter	Project Manager	Ph. (867) 874-6574 Cell: (867) 875-8170 Fax (867) 874-6154	Carter Industries Ltd.
TBA	Site Superintendent	Site Ph: TBA	TBA
Robert Johnson	Health and Safety Officer	Cell: (867) 446-4694	Delta Engineering Ltd.
SPILL RESPONSE NUMBERS			
NU 24 Hour Spill Reporting Line	GNU and AANDC	Ph. (867) 920.8130 (call collect if required) Fax: (867) 873-6924	Triggers multiple governmental and private organizations for spill response
Jimmy Noble	Enforcement Officer Environment	Ph. (867) 975-4644	Environment Canada
Erik Allain	Field Operations Manager	Ph. (867) 975-4295	AANDC
CANUTEC	Federal Department of Transportation	Ph. (613) 996.6666 (call collect if required)	Triggers multiple governmental and private organizations for spill response for dangerous goods
Robert Eno	Pollution Control Environmental Protection Services	Ph. (867) 975-7748 Fax (867) 975-7739	GNU Department of Environment
Danielle Morin	North Slave Region Environmental Protection Officer	Ph: 867-920-3387	GNWT Environment and Natural Resources
AIR CHARTERS			
Air Tindi	Air Charter – Plane	Ph. (867) 669.8200 Fax. (867) 669.8219	Private Company
Summit Air	Air Charter – Plane	Ph. (867) 669.9789 Fax (867) 669.9649	Private Company
Great Slave Helicopters	Air Charter - Helicopter	Ph. (867) 873.2081 Fax (867) 873.6087 After Hours Ph. (867) 873.2081	Private Company

Prepared by:
Delta Engineering Ltd./Carter Industries Ltd. – A Joint Venture

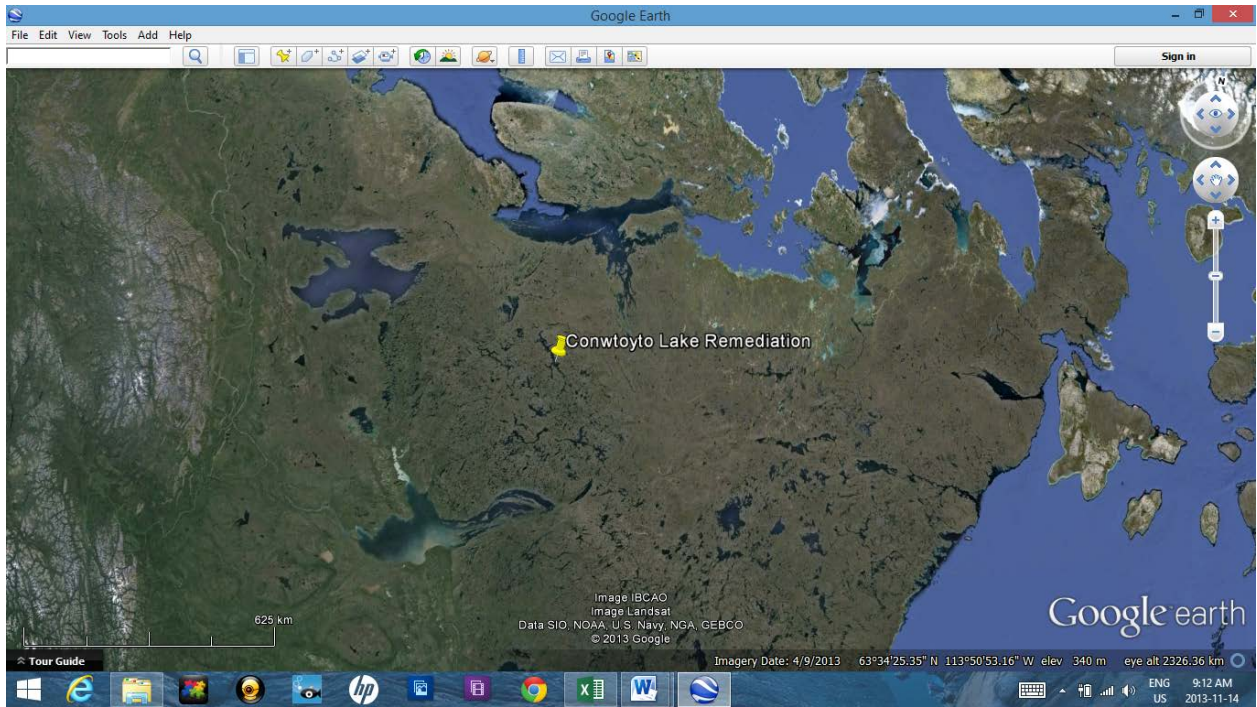
4 Training Program

4.1 Outline of Training Program

The employee and contractor training program was developed by the project manager, and has been distributed by the site superintendent. The following are key steps in the program:

- all individuals entering the site are required to participate in an orientation session
- during this session, all locations of the spill plan and spill kits are provided on a map in hard copy
- an overview of the plan is provided by the site superintendent or designate leading the orientation session
- specific training sessions, including mock spill exercises, are scheduled for individuals directly involved in handling hazardous materials to ensure they know all steps to be undertaken in handling these materials, as well as the steps involved in the event of a spill, including the proper use of spill kits
- all employees and contractors are required to have their basic first aid training, as well as WHMIS training, before working on the site
- supervisors are required to have first aid training

Appendix A – Site Location Map



Prepared by:
Delta Engineering Ltd./Carter Industries Ltd. – A Joint Venture

Appendix B – Material Safety Data Sheets

MSDS Binders are located on-site. One copy is stored in camp. Copies of MSDS sheets for diesel fuel, unleaded gasoline, lubricating oil, and propane have been appended to this plan.

Prepared by:
Delta Engineering Ltd./Carter Industries Ltd. – A Joint Venture

Material Safety Data Sheet



GASOLINE - ETHANOL



1. Product and company identification

Product name	: GASOLINE - ETHANOL
Synonym	: SuperClean, SuperClean 94 (Montreal), GASOHOL, Regular, Mid-Grade, Plus, WinterGas, RegularClean, PlusClean, marked or dyed gasoline, Super Premium (94 RO), E-10, Ethanol blended gasoline
Code	: GASOHOL
Material uses	: Gasoline-Ethanol is used in spark ignition engines including motor vehicles, farm vehicles, inboard and outboard boat engines, small engines and recreational vehicles.
Manufacturer	: PETRO-CANADA P.O. Box 2844 150 – 6th Avenue South-West Calgary, Alberta T2P 3E3
<u>In case of emergency</u>	: Petro-Canada: 403-296-3000 Canutec Transportation: 613-996-6666 Poison Control Centre: Consult local telephone directory for emergency number(s).

2. Hazards identification

Physical state	: Clear liquid.
Odour	: Gasoline
WHMIS (Canada)	:   Class B-2: Flammable liquid Class D-2A: Material causing other toxic effects (Very toxic). Class D-2B: Material causing other toxic effects (Toxic).
OSHA/HCS status	: This material is considered hazardous by the OSHA Hazard Communication Standard (29 CFR 1910.1200).
Emergency overview	: WARNING! FLAMMABLE LIQUID AND VAPOUR. CAUSES RESPIRATORY TRACT, EYE AND SKIN IRRITATION. CANCER HAZARD - CAN CAUSE CANCER. CONTAINS MATERIAL WHICH MAY CAUSE HERITABLE GENETIC EFFECTS. Flammable liquid. Irritating to eyes, respiratory system and skin. Keep away from heat, sparks and flame. Avoid exposure - obtain special instructions before use. Do not breathe vapour or mist. Avoid contact with eyes, skin and clothing. Can cause cancer. Risk of cancer depends on duration and level of exposure. Contains material which may cause heritable genetic effects. Use only with adequate ventilation. Keep container tightly closed and sealed until ready for use. Wash thoroughly after handling.
Routes of entry	: Dermal contact. Eye contact. Inhalation. Ingestion.
<u>Potential acute health effects</u>	
Inhalation	: Inhalation of this product may cause respiratory tract irritation and Central Nervous System (CNS) Depression, symptoms of which may include; weakness, dizziness, slurred speech, drowsiness, unconsciousness and in cases of severe overexposure; coma and death.
Ingestion	: Ingestion of this product may cause gastro-intestinal irritation. Aspiration of this product may result in severe irritation or burns to the respiratory tract. Ingestion of this product may cause Central Nervous System (CNS) Depression, symptoms of which may include; weakness, dizziness, slurred speech, drowsiness, unconsciousness and in cases of severe overexposure; coma and death.
Skin	: Irritating to skin.
Eyes	: Irritating to eyes.
<u>Potential chronic health effects</u>	

Prepared by:
Delta Engineering Ltd./Carter Industries Ltd. – A Joint Venture

2. Hazards identification

Chronic effects	: This product contains an ingredient or ingredients, which have been shown to cause chronic toxic effects. Repeated or prolonged exposure to the substance can produce blood disorders.
Carcinogenicity	: Can cause cancer. Risk of cancer depends on duration and level of exposure.
Mutagenicity	: Contains material which may cause heritable genetic effects.
Teratogenicity	: No known significant effects or critical hazards.
Developmental effects	: No known significant effects or critical hazards.
Fertility effects	: No known significant effects or critical hazards.
Medical conditions aggravated by over-exposure	: Repeated or prolonged contact with spray or mist may produce chronic eye irritation and severe skin irritation. Repeated skin exposure can produce local skin destruction or dermatitis.

See toxicological information (section 11)

3. Composition/information on ingredients

<u>Name</u>	<u>CAS number</u>	<u>%</u>
Gasoline	86290-81-5	90 - 97
Toluene	108-88-3	10-20
Ethanol	64-17-5	5-10
Benzene	71-43-2	0.5-1.5

There are no additional ingredients present which, within the current knowledge of the supplier and in the concentrations applicable, are classified as hazardous to health or the environment and hence require reporting in this section.

4. First-aid measures

Eye contact	: Check for and remove any contact lenses. Immediately flush eyes with plenty of water for at least 15 minutes, occasionally lifting the upper and lower eyelids. Get medical attention immediately.
Skin contact	: In case of contact, immediately flush skin with plenty of water for at least 15 minutes while removing contaminated clothing and shoes. Wash skin thoroughly with soap and water or use recognised skin cleanser. Wash clothing before reuse. Clean shoes thoroughly before reuse. Get medical attention immediately.
Inhalation	: Move exposed person to fresh air. If not breathing, if breathing is irregular or if respiratory arrest occurs, provide artificial respiration or oxygen by trained personnel. Loosen tight clothing such as a collar, tie, belt or waistband. Get medical attention immediately.
Ingestion	: Wash out mouth with water. Do not induce vomiting unless directed to do so by medical personnel. Never give anything by mouth to an unconscious person. Get medical attention immediately.
Protection of first-aiders	: No action shall be taken involving any personal risk or without suitable training. If it is suspected that fumes are still present, the rescuer should wear an appropriate mask or self-contained breathing apparatus. It may be dangerous to the person providing aid to give mouth-to-mouth resuscitation. Wash contaminated clothing thoroughly with water before removing it, or wear gloves.
Notes to physician	: No specific treatment. Treat symptomatically. Contact poison treatment specialist immediately if large quantities have been ingested or inhaled.

5. Fire-fighting measures

Flammability of the product	: Flammable.
Extinguishing media	
Suitable	: Use dry chemical, CO ₂ , alcohol-resistant foam or water spray (fog).
Not suitable	: Do not use water jet.

Prepared by:
Delta Engineering Ltd./Carter Industries Ltd. – A Joint Venture

5. Fire-fighting measures

- Special exposure hazards** : Promptly isolate the scene by removing all persons from the vicinity of the incident if there is a fire. No action shall be taken involving any personal risk or without suitable training. Move containers from fire area if this can be done without risk. Use water spray to keep fire-exposed containers cool.
- Products of combustion** : Carbon oxides (CO, CO₂), nitrogen oxides (NO_x), lead, aldehydes, ketones, phenols, polynuclear aromatic hydrocarbons, smoke and irritating vapours as products of incomplete combustion.
- Special protective equipment for fire-fighters** : Fire-fighters should wear appropriate protective equipment and self-contained breathing apparatus (SCBA) with a full face-piece operated in positive pressure mode.
- Special remarks on fire hazards** : Extremely flammable in presence of open flames, sparks, and heat. This product can accumulate static charge and ignite. Vapours are heavier than air and may travel considerable distance to sources of ignition and flash back.
- Special remarks on explosion hazards** : Do not pressurise, cut, weld, braze, solder, drill, grind or expose containers to heat or sources of ignition. Containers may explode in heat of fire. Runoff to sewer may create fire or explosion hazard.

6. Accidental release measures

- Personal precautions** : No action shall be taken involving any personal risk or without suitable training. Evacuate surrounding areas. Keep unnecessary and unprotected personnel from entering. Do not touch or walk through spilled material. Shut off all ignition sources. No flames, smoking or flames in hazard area. Avoid breathing vapour or mist. Provide adequate ventilation. Wear appropriate respirator when ventilation is inadequate. Put on appropriate personal protective equipment (see section 8).
- Environmental precautions** : Avoid dispersal of spilled material and runoff and contact with soil, waterways, drains and sewers. Inform the relevant authorities if the product has caused environmental pollution (sewers, waterways, soil or air).
- Methods for cleaning up**
- Small spill** : Stop leak if without risk. Move containers from spill area. Dilute with water and mop up if water-soluble or absorb with an inert dry material and place in an appropriate waste disposal container. Use spark-proof tools and explosion-proof equipment. Dispose of via a licensed waste disposal contractor.
- Large spill** : Stop leak if without risk. Move containers from spill area. Approach the release from upwind. Prevent entry into sewers, water courses, basements or confined areas. Wash spillages into an effluent treatment plant or proceed as follows. Contain and collect spillage with non-combustible, absorbent material e.g. sand, earth, vermiculite or diatomaceous earth and place in container for disposal according to local regulations (see section 13). Use spark-proof tools and explosion-proof equipment. Dispose of via a licensed waste disposal contractor. Contaminated absorbent material may pose the same hazard as the spilled product. Note: see section 1 for emergency contact information and section 13 for waste disposal.

7. Handling and storage

- Handling** : Put on appropriate personal protective equipment (see section 8). Eating, drinking and smoking should be prohibited in areas where this material is handled, stored and processed. Workers should wash hands and face before eating, drinking and smoking. Do not get in eyes or on skin or clothing. Do not ingest. Avoid breathing vapour or mist. Use only with adequate ventilation. Wear appropriate respirator when ventilation is inadequate. Do not enter storage areas and confined spaces unless adequately ventilated. Keep in the original container or an approved alternative made from a compatible material, kept tightly closed when not in use. Store and use away from heat, sparks, open flame or any other ignition source. Use explosion-proof electrical (ventilating, lighting and material handling) equipment. Use non-sparking tools. Take precautionary measures against electrostatic discharges. To avoid fire or explosion, dissipate static electricity during transfer by earthing and bonding containers and equipment before transferring material. Empty containers retain product residue and can be hazardous. Do not reuse container. Ground all equipment containing material.

Prepared by:
Delta Engineering Ltd./Carter Industries Ltd. – A Joint Venture

7. Handling and storage

Storage

- Store in accordance with local regulations. Store in a segregated and approved area. Store in original container protected from direct sunlight in a dry, cool and well-ventilated area, away from incompatible materials (see section 10) and food and drink. Eliminate all ignition sources. Separate from oxidizing materials. Keep container tightly closed and sealed until ready for use. Containers that have been opened must be carefully resealed and kept upright to prevent leakage. Do not store in unlabelled containers. Use appropriate containment to avoid environmental contamination. Ensure the storage containers are grounded/bonded.

8. Exposure controls/personal protection

Ingredient	Exposure limits
Gasoline	ACGIH TLV (United States). TWA: 300 ppm 8 hour(s). STEL: 500 ppm 15 minute(s).
Toluene	ACGIH TLV (United States). TWA: 20 ppm 8 hour(s).
Ethanol	ACGIH TLV (United States). STEL: 1000 ppm 15 minute(s).
Benzene	ACGIH TLV (United States). Absorbed through skin. TWA: 0.5 ppm 8 hour(s). STEL: 2.5 ppm 15 minute(s).

Consult local authorities for acceptable exposure limits.

Recommended monitoring procedures

- If this product contains ingredients with exposure limits, personal, workplace atmosphere or biological monitoring may be required to determine the effectiveness of the ventilation or other control measures and/or the necessity to use respiratory protective equipment.

Engineering measures

- Use only with adequate ventilation. Use process enclosures, local exhaust ventilation or other engineering controls to keep worker exposure to airborne contaminants below any recommended or statutory limits. The engineering controls also need to keep gas, vapour or dust concentrations below any lower explosive limits. Use explosion-proof ventilation equipment.

Hygiene measures

- Wash hands, forearms and face thoroughly after handling chemical products, before eating, smoking and using the lavatory and at the end of the working period. Appropriate techniques should be used to remove potentially contaminated clothing. Wash contaminated clothing before reusing. Ensure that eyewash stations and safety showers are close to the workstation location.

Personal protection

Respiratory

- Use a properly fitted, air-purifying or air-fed respirator complying with an approved standard if a risk assessment indicates this is necessary. Respirator selection must be based on known or anticipated exposure levels, the hazards of the product and the safe working limits of the selected respirator. Recommended: A NIOSH-approved air-purifying respirator with an organic vapour cartridge or canister may be permissible under certain circumstances where airborne concentrations are expected to exceed exposure limits. Protection provided by air-purifying respirators is limited. Use a positive-pressure, air-supplied respirator if there is any potential for uncontrolled release, exposure levels are unknown, or any other circumstances where air-purifying respirators may not provide adequate protection.

Hands

- Chemical-resistant, impervious gloves complying with an approved standard should be worn at all times when handling chemical products if a risk assessment indicates this is necessary. Recommended: polyvinyl alcohol (PVA), Viton. Consult your PPE provider for breakthrough times and the specific glove that is best for you based on your use patterns. It should be realized that eventually any material regardless of their imperviousness, will get permeated by chemicals. Therefore, protective gloves should be regularly checked for wear and tear. At the first signs of hardening and cracks, they should be changed.

Prepared by:
Delta Engineering Ltd./Carter Industries Ltd. – A Joint Venture

8 . Exposure controls/personal protection

- Eyes** : Safety eyewear complying with an approved standard should be used when a risk assessment indicates this is necessary to avoid exposure to liquid splashes, mists or dusts.
- Skin** : Personal protective equipment for the body should be selected based on the task being performed and the risks involved and should be approved by a specialist before handling this product.
- Environmental exposure controls** : Emissions from ventilation or work process equipment should be checked to ensure they comply with the requirements of environmental protection legislation. In some cases, fume scrubbers, filters or engineering modifications to the process equipment will be necessary to reduce emissions to acceptable levels.

9 . Physical and chemical properties

- Physical state** : Clear liquid.
- Flash point** : -43°C (-45.4°F) (NFPA)
- Auto-ignition temperature** : Not available.
- Flammable limits** : Lower: 1.4% (NFPA)
Upper: 7.6% (NFPA)
- Colour** : Clear, undyed liquid. May be dyed for taxation purposes.
- Odour** : Gasoline
- Odour threshold** : Not available.
- pH** : Not available.
- Boiling/condensation point** : 26 to 200°C (78.8 to 392°F)
- Melting/freezing point** : Not available.
- Relative density** : 0.7 to 0.78 kg/L @ 15°C (59°F)
- Vapour pressure** : 41 to 107 kPa (307 to 802 mm Hg) @ 15°C (59°F)
- Vapour density** : 3 to 4 [Air = 1] (NFPA)
- Volatility** : Not available.
- Evaporation rate** : Not available.
- Viscosity** : 0.6 cSt @ 40°C (104°F)
- Pour point** : Not available.
- Solubility** : Hydrocarbon components virtually insoluble in water. Ethyl alcohol is completely soluble in water.

10 . Stability and reactivity

- Chemical stability** : The product is stable.
- Hazardous polymerisation** : Under normal conditions of storage and use, hazardous polymerisation will not occur.
- Materials to avoid** : Reactive with oxidising agents, acids and interhalogens.
- Hazardous decomposition products** : May release COx, NOx, aldehydes, ketones, phenols, polynuclear aromatic hydrocarbons, smoke and irritating vapours when heated to decomposition.

11 . Toxicological information

Acute toxicity

Product/ingredient name	Result	Species	Dose	Exposure
Gasoline	LD50 Dermal	Rabbit	>5000 mg/kg	-
	LD50 Oral	Rat	13600 mg/kg	-
Toluene	LD50 Dermal	Rabbit	12125 mg/kg	-
	LD50 Oral	Rat	636 mg/kg	-
	LC50 Inhalation	Rat	7585 ppm	4 hours
	Vapour			
Ethanol	LD50 Dermal	Rabbit	>15800 mg/kg	-
	LD50 Oral	Mouse	3450 mg/kg	-

Prepared by:
Delta Engineering Ltd./Carter Industries Ltd. – A Joint Venture

11 . Toxicological information

Benzene	LC50 Inhalation Vapour	Rat	8850 mg/m ³	4 hours
	LD50 Dermal	Rabbit	>8240 mg/kg	-
	LD50 Oral	Rat	930 mg/kg	-
	LC50 Inhalation Vapour	Rat	13228 ppm	4 hours

Conclusion/Summary : Not available.

Chronic toxicity

Conclusion/Summary : Not available.

Irritation/Corrosion

Conclusion/Summary : Not available.

Sensitiser

Conclusion/Summary : Not available.

Carcinogenicity

Conclusion/Summary : Not available.

Classification

Product/ingredient name	ACGIH	IARC	EPA	NIOSH	NTP	OSHA
Gasoline	A3	2B	-	-	-	-
Toluene	A4	3	D	-	-	-
Ethanol	A3	-	-	-	-	-
Benzene	A1	1	A	+	Proven.	+

Mutagenicity

Conclusion/Summary : Not available.

Teratogenicity

Conclusion/Summary : There is a wealth of information about the teratogenic hazards of Toluene in the literature; however, based upon professional judgement regarding the body of evidence, WHMIS classification as a teratogen is not warranted.

Reproductive toxicity

Conclusion/Summary : Not available.

12 . Ecological information

Environmental effects : No known significant effects or critical hazards.

Aquatic ecotoxicity

Conclusion/Summary : Not available.

Biodegradability

Conclusion/Summary : Not available.

13 . Disposal considerations


Waste disposal : The generation of waste should be avoided or minimised wherever possible. Empty containers or liners may retain some product residues. This material and its container must be disposed of in a safe way. Dispose of surplus and non-recyclable products via a licensed waste disposal contractor. Disposal of this product, solutions and any by-products should at all times comply with the requirements of environmental protection and waste disposal legislation and any regional local authority requirements. Avoid dispersal of spilt material and runoff and contact with soil, waterways, drains and sewers.

Disposal should be in accordance with applicable regional, national and local laws and regulations.

Refer to Section 7: HANDLING AND STORAGE and Section 8: EXPOSURE CONTROLS/PERSONAL PROTECTION for additional handling information and protection of employees.

Prepared by:
Delta Engineering Ltd./Carter Industries Ltd. – A Joint Venture

14 . Transport information

Regulatory information	UN number	Proper shipping name	Classes	PG*	Label	Additional information
TDG Classification	UN1203	GASOLINE	3	II		-
DOT Classification	Not available.	Not available.	Not available.	-		-

PG* : Packing group

15 . Regulatory informationUnited States

HCS Classification : Flammable liquid
Irritating material
Carcinogen

Canada

WHMIS (Canada) : Class B-2: Flammable liquid
Class D-2A: Material causing other toxic effects (Very toxic).
Class D-2B: Material causing other toxic effects (Toxic).

This product has been classified in accordance with the hazard criteria of the Controlled Products Regulations and the MSDS contains all the information required by the Controlled Products Regulations.

International regulations

Canada inventory : All components are listed or exempted.

United States inventory (TSCA 8b) : All components are listed or exempted.

Europe inventory : All components are listed or exempted.

16 . Other information

Label requirements : FLAMMABLE LIQUID AND VAPOUR. CAUSES RESPIRATORY TRACT, EYE AND SKIN IRRITATION. CANCER HAZARD - CAN CAUSE CANCER. CONTAINS MATERIAL WHICH MAY CAUSE HERITABLE GENETIC EFFECTS.

Hazardous Material Information System (U.S.A.) :

Health	3
Flammability	3
Physical hazards	0
Personal protection	H

National Fire Protection Association (U.S.A.) :



References

: Available upon request.
™ Trademark of Suncor Energy Inc. Used under licence.

Date of printing

: 4/22/2010.

Date of issue

: 22 April 2010

Date of previous issue

: 4/22/2010.

Responsible name

: Product Safety - RS

Indicates information that has changed from previously issued version.

Prepared by:
Delta Engineering Ltd./Carter Industries Ltd. – A Joint Venture

16 . Other information**For Copy of (M)SDS**: Internet: www.petro-canada.ca/msds

Canada-wide: telephone: 1-800-668-0220; fax: 1-800-837-1228

For Product Safety Information: (905) 804-4752

Notice to reader

To the best of our knowledge, the information contained herein is accurate. However, neither the above-named supplier, nor any of its subsidiaries, assumes any liability whatsoever for the accuracy or completeness of the information contained herein.

Final determination of suitability of any material is the sole responsibility of the user. All materials may present unknown hazards and should be used with caution. Although certain hazards are described herein, we cannot guarantee that these are the only hazards that exist.

Prepared by:
Delta Engineering Ltd./Carter Industries Ltd. – A Joint Venture

Material Safety Data Sheet



DIESEL FUEL



1. Product and company identification

Product name	: DIESEL FUEL
Synonym	: Seasonal Diesel, #1 Diesel, #2 Heating Oil, #1 Heating Oil, D50, D60, P40, P50, Arctic Diesel, Farm Diesel, Marine Diesel, Low Sulphur Diesel, LSD, Ultra Low Sulphur Diesel, ULSD, Mining Diesel, Naval Distillate, Dyed Diesel, Marked Diesel, Coloured Diesel, Furnace special
Code	: W104, W293; SAP: 120, 121, 122, 129, 135, 287
Material uses	: Diesel fuels are distillate fuels suitable for use in high and medium speed internal combustion engines of the compression ignition type. Mining Diesel has a higher flash point requirement, for safe use in underground mines.
Manufacturer	: PETRO-CANADA P.O. Box 2844 150 – 6th Avenue South-West Calgary, Alberta T2P 3E3
In case of emergency	: Petro-Canada: 403-296-3000 Canutec Transportation: 613-996-6666 Poison Control Centre: Consult local telephone directory for emergency number(s).

2. Hazards identification

Physical state	: Bright oily liquid.
Odour	: Mild petroleum oil like.
WHMIS (Canada)	:   Class B-3: Combustible liquid with a flash point between 37.8°C (100°F) and 93.3°C (200°F). Class D-2B: Material causing other toxic effects (Toxic).
OSHA/HCS status	: This material is considered hazardous by the OSHA Hazard Communication Standard (29 CFR 1910.1200).
Emergency overview	: WARNING! COMBUSTIBLE LIQUID AND VAPOUR. CAUSES EYE AND SKIN IRRITATION. Combustible liquid. Severely irritating to the skin. Irritating to eyes. Keep away from heat, sparks and flame. Do not get in eyes. Avoid breathing vapour or mist. Avoid contact with skin and clothing. Use only with adequate ventilation. Wash thoroughly after handling.
Routes of entry	: Dermal contact. Eye contact. Inhalation. Ingestion.
Potential acute health effects	
Inhalation	: Inhalation of this product may cause respiratory tract irritation and Central Nervous System (CNS) Depression, symptoms of which may include; weakness, dizziness, slurred speech, drowsiness, unconsciousness and in cases of severe overexposure; coma and death.
Ingestion	: Ingestion of this product may cause gastro-intestinal irritation. Aspiration of this product may result in severe irritation or burns to the respiratory tract.
Skin	: Severely irritating to the skin.
Eyes	: Irritating to eyes.
Potential chronic health effects	
Chronic effects	: No known significant effects or critical hazards.
Carcinogenicity	: No known significant effects or critical hazards.
Mutagenicity	: No known significant effects or critical hazards.
Teratogenicity	: No known significant effects or critical hazards.
Developmental effects	: No known significant effects or critical hazards.

Prepared by:
Delta Engineering Ltd./Carter Industries Ltd. – A Joint Venture

2. Hazards identification

- Fertility effects** : No known significant effects or critical hazards.
- Medical conditions aggravated by over-exposure** : Repeated skin exposure can produce local skin destruction or dermatitis.

See toxicological information (section 11)

3. Composition/information on ingredients

<u>Name</u>	<u>CAS number</u>	<u>%</u>
Kerosine (petroleum), hydrodesulfurized/Fuels, diesel/Fuel Oil No. 2	64742-81-0/68334-30-5/68476-30-2	100

There are no additional ingredients present which, within the current knowledge of the supplier and in the concentrations applicable, are classified as hazardous to health or the environment and hence require reporting in this section.

4. First-aid measures

- Eye contact** : Check for and remove any contact lenses. Immediately flush eyes with plenty of water for at least 15 minutes, occasionally lifting the upper and lower eyelids. Get medical attention immediately.
- Skin contact** : In case of contact, immediately flush skin with plenty of water for at least 15 minutes while removing contaminated clothing and shoes. Wash skin thoroughly with soap and water or use recognised skin cleanser. Wash clothing before reuse. Clean shoes thoroughly before reuse. Get medical attention immediately.
- Inhalation** : Move exposed person to fresh air. If not breathing, if breathing is irregular or if respiratory arrest occurs, provide artificial respiration or oxygen by trained personnel. Loosen tight clothing such as a collar, tie, belt or waistband. Get medical attention immediately.
- Ingestion** : Wash out mouth with water. Do not induce vomiting unless directed to do so by medical personnel. Never give anything by mouth to an unconscious person. Get medical attention immediately.
- Protection of first-aiders** : No action shall be taken involving any personal risk or without suitable training. It may be dangerous to the person providing aid to give mouth-to-mouth resuscitation.
- Notes to physician** : No specific treatment. Treat symptomatically. Contact poison treatment specialist immediately if large quantities have been ingested or inhaled.

5. Fire-fighting measures

- Flammability of the product** : Combustible liquid
- Extinguishing media**
- Suitable** : Use dry chemical, CO₂, water spray (fog) or foam.
- Not suitable** : Do not use water jet.
- Special exposure hazards** : Promptly isolate the scene by removing all persons from the vicinity of the incident if there is a fire. No action shall be taken involving any personal risk or without suitable training. Move containers from fire area if this can be done without risk. Use water spray to keep fire-exposed containers cool.
- Products of combustion** : Carbon oxides (CO, CO₂), nitrogen oxides (NO_x), sulphur oxides (SO_x), sulphur compounds (H₂S), smoke and irritating vapours as products of incomplete combustion.
- Special protective equipment for fire-fighters** : Fire-fighters should wear appropriate protective equipment and self-contained breathing apparatus (SCBA) with a full face-piece operated in positive pressure mode.
- Special remarks on fire hazards** : Flammable in presence of open flames, sparks, and heat. Vapours are heavier than air and may travel considerable distance to sources of ignition and flash back. This product can accumulate static charge and ignite.
- Special remarks on explosion hazards** : Do not pressurise, cut, weld, braze, solder, drill, grind or expose containers to heat or sources of ignition. Runoff to sewer may create fire or explosion hazard.

Prepared by:
Delta Engineering Ltd./Carter Industries Ltd. – A Joint Venture

6 . Accidental release measures

Personal precautions

- : No action shall be taken involving any personal risk or without suitable training. Evacuate surrounding areas. Keep unnecessary and unprotected personnel from entering. Do not touch or walk through spilt material. Shut off all ignition sources. No flares, smoking or flames in hazard area. Avoid breathing vapour or mist. Provide adequate ventilation. Wear appropriate respirator when ventilation is inadequate. Put on appropriate personal protective equipment (see section 8).

Environmental precautions

- : Avoid dispersal of spilt material and runoff and contact with soil, waterways, drains and sewers. Inform the relevant authorities if the product has caused environmental pollution (sewers, waterways, soil or air).

Methods for cleaning up

Small spill

- : Stop leak if without risk. Move containers from spill area. Dilute with water and mop up if water-soluble or absorb with an inert dry material and place in an appropriate waste disposal container. Use spark-proof tools and explosion-proof equipment. Dispose of via a licensed waste disposal contractor.

Large spill

- : Stop leak if without risk. Move containers from spill area. Approach the release from upwind. Prevent entry into sewers, water courses, basements or confined areas. Wash spillages into an effluent treatment plant or proceed as follows. Contain and collect spillage with non-combustible, absorbent material e.g. sand, earth, vermiculite or diatomaceous earth and place in container for disposal according to local regulations (see section 13). Use spark-proof tools and explosion-proof equipment. Dispose of via a licensed waste disposal contractor. Contaminated absorbent material may pose the same hazard as the spilt product. Note: see section 1 for emergency contact information and section 13 for waste disposal.

7 . Handling and storage

Handling

- : Put on appropriate personal protective equipment (see section 8). Eating, drinking and smoking should be prohibited in areas where this material is handled, stored and processed. Workers should wash hands and face before eating, drinking and smoking. Do not ingest. Avoid contact with eyes, skin and clothing. Avoid breathing vapour or mist. Use only with adequate ventilation. Wear appropriate respirator when ventilation is inadequate. Do not enter storage areas and confined spaces unless adequately ventilated. Keep in the original container or an approved alternative made from a compatible material, kept tightly closed when not in use. Store and use away from heat, sparks, open flame or any other ignition source. Use explosion-proof electrical (ventilating, lighting and material handling) equipment. Use non-sparking tools. Take precautionary measures against electrostatic discharges. To avoid fire or explosion, dissipate static electricity during transfer by earthing and bonding containers and equipment before transferring material. Empty containers retain product residue and can be hazardous. Do not reuse container.

Storage

- : Store in accordance with local regulations. Store in a segregated and approved area. Store in original container protected from direct sunlight in a dry, cool and well-ventilated area, away from incompatible materials (see section 10) and food and drink. Eliminate all ignition sources. Separate from oxidizing materials. Keep container tightly closed and sealed until ready for use. Containers that have been opened must be carefully resealed and kept upright to prevent leakage. Do not store in unlabelled containers. Use appropriate containment to avoid environmental contamination. Ensure the storage containers are grounded/bonded.

8 . Exposure controls/personal protection

Ingredient	Exposure limits
Kerosine (petroleum), hydrodesulfurized	ACGIH TLV (United States). Absorbed through skin. TWA: 200 mg/m ³ 8 hour(s).
Fuels, diesel	ACGIH TLV (United States). Absorbed through skin. TWA: 100 mg/m ³ , (Inhalable fraction and vapour) 8 hour(s).
Fuel oil No. 2	ACGIH TLV (United States). Absorbed through skin. TWA: 100 mg/m ³ , (Inhalable fraction and vapour) 8 hour(s).

Consult local authorities for acceptable exposure limits.

Prepared by:
Delta Engineering Ltd./Carter Industries Ltd. – A Joint Venture

8 . Exposure controls/personal protection

Recommended monitoring procedures	: If this product contains ingredients with exposure limits, personal, workplace atmosphere or biological monitoring may be required to determine the effectiveness of the ventilation or other control measures and/or the necessity to use respiratory protective equipment.
Engineering measures	: Use only with adequate ventilation. Use process enclosures, local exhaust ventilation or other engineering controls to keep worker exposure to airborne contaminants below any recommended or statutory limits. The engineering controls also need to keep gas, vapour or dust concentrations below any lower explosive limits. Use explosion-proof ventilation equipment.
Hygiene measures	: Wash hands, forearms and face thoroughly after handling chemical products, before eating, smoking and using the lavatory and at the end of the working period. Appropriate techniques should be used to remove potentially contaminated clothing. Wash contaminated clothing before reusing. Ensure that eyewash stations and safety showers are close to the workstation location.
Personal protection	
Respiratory	: Use a properly fitted, air-purifying or air-fed respirator complying with an approved standard if a risk assessment indicates this is necessary. Respirator selection must be based on known or anticipated exposure levels, the hazards of the product and the safe working limits of the selected respirator. Recommended: organic vapour cartridge or canister may be permissible under certain circumstances where airborne concentrations are expected to exceed exposure limits. Protection provided by air-purifying respirators is limited. Use a positive-pressure, air-supplied respirator if there is any potential for uncontrolled release, exposure levels are unknown, or any other circumstances where air-purifying respirators may not provide adequate protection.
Hands	: Chemical-resistant, impervious gloves complying with an approved standard should be worn at all times when handling chemical products if a risk assessment indicates this is necessary. Recommended: nitrile, neoprene, polyvinyl alcohol (PVA), Viton. Consult your PPE provider for breakthrough times and the specific glove that is best for you based on your use patterns. It should be realized that eventually any material regardless of their imperviousness, will get permeated by chemicals. Therefore, protective gloves should be regularly checked for wear and tear. At the first signs of hardening and cracks, they should be changed.
Eyes	: Safety eyewear complying with an approved standard should be used when a risk assessment indicates this is necessary to avoid exposure to liquid splashes, mists or dusts.
Skin	: Personal protective equipment for the body should be selected based on the task being performed and the risks involved and should be approved by a specialist before handling this product.
Environmental exposure controls	: Emissions from ventilation or work process equipment should be checked to ensure they comply with the requirements of environmental protection legislation. In some cases, fume scrubbers, filters or engineering modifications to the process equipment will be necessary to reduce emissions to acceptable levels.

9 . Physical and chemical properties

Physical state	: Bright oily liquid.
Flash point	: Diesel fuel: Closed cup: $\geq 40^{\circ}\text{C}$ ($\geq 104^{\circ}\text{F}$) Marine Diesel Fuel: Closed Cup: $\geq 60^{\circ}\text{C}$ ($\geq 140^{\circ}\text{F}$) Mining Diesel: Closed Cup: $\geq 52^{\circ}\text{C}$ ($\geq 126^{\circ}\text{F}$)
Auto-ignition temperature	: 225°C (437°F)
Flammable limits	: Lower: 0.7% Upper: 6%
Colour	: Clear to yellow (This product may be dyed red for taxation purposes).
Odour	: Mild petroleum oil like.
Odour threshold	: Not available.
pH	: Not available.
Boiling/condensation point	: 150 to 371°C (302 to 699.8°F)

Prepared by:
Delta Engineering Ltd./Carter Industries Ltd. – A Joint Venture

9. Physical and chemical properties

Melting/freezing point	: Not available.
Relative density	: 0.80 to 0.88 kg/L @ 15°C (59°F)
Vapour pressure	: 1 kPa (7.5 mm Hg) @ 20°C (68°F).
Vapour density	: 4.5 [Air = 1]
Volatility	: Semivolatile to volatile.
Evaporation rate	: Not available.
Viscosity	: Diesel fuel: 1.3 - 4.1 cSt @ 40°C (104°F) Marine Diesel Fuel: 1.3 - 4.4 cSt @ 40°C (104°F)
Pour point	: Not available.
Solubility	: Insoluble in cold water, soluble in non-polar hydrocarbon solvents.

10. Stability and reactivity

Chemical stability	: The product is stable.
Hazardous polymerisation	: Under normal conditions of storage and use, hazardous polymerisation will not occur.
Materials to avoid	: Reactive with oxidising agents and acids.
Hazardous decomposition products	: May release COx, NOx, SOx, H2S, smoke and irritating vapours when heated to decomposition.

11. Toxicological information

Acute toxicity

Product/ingredient name	Result	Species	Dose	Exposure
Kerosine (petroleum), hydrodesulfurized	LD50 Dermal	Rabbit	>2000 mg/kg	-
	LD50 Oral	Rat	>5000 mg/kg	-
	LC50 Inhalation	Rat	>5000 mg/m ³	4 hours
	Vapour			
Fuels, diesel	LD50 Dermal	Mouse	24500 mg/kg	-
	LD50 Oral	Rat	7500 mg/kg	-
Fuel oil No. 2	LD50 Oral	Rat	12000 mg/kg	-

Conclusion/Summary : Not available.

Chronic toxicity

Conclusion/Summary : Not available.

Irritation/Corrosion

Conclusion/Summary : Not available.

Sensitiser

Conclusion/Summary : Not available.

Carcinogenicity

Conclusion/Summary : Not available.

Classification

Product/ingredient name	ACGIH	IARC	EPA	NIOSH	NTP	OSHA
Kerosine (petroleum), hydrodesulfurized	A3	-	-	-	-	-
Fuels, diesel	A3	3	-	-	-	-
Fuel oil No. 2	A3	3	-	-	-	-

Mutagenicity

Conclusion/Summary : Not available.

Teratogenicity

Conclusion/Summary : Not available.

Reproductive toxicity

Conclusion/Summary : Not available.

Prepared by:
Delta Engineering Ltd./Carter Industries Ltd. – A Joint Venture

12 . Ecological information

Environmental effects : No known significant effects or critical hazards.

Aquatic ecotoxicity

Conclusion/Summary : Not available.

Biodegradability

Conclusion/Summary : Not available.


13 . Disposal considerations

Waste disposal : The generation of waste should be avoided or minimised wherever possible. Empty containers or liners may retain some product residues. This material and its container must be disposed of in a safe way. Dispose of surplus and non-recyclable products via a licensed waste disposal contractor. Disposal of this product, solutions and any by-products should at all times comply with the requirements of environmental protection and waste disposal legislation and any regional local authority requirements. Avoid dispersal of spilt material and runoff and contact with soil, waterways, drains and sewers.

Disposal should be in accordance with applicable regional, national and local laws and regulations.

Refer to Section 7: HANDLING AND STORAGE and Section 8: EXPOSURE CONTROLS/PERSONAL PROTECTION for additional handling information and protection of employees.

14 . Transport information

Regulatory information	UN number	Proper shipping name	Classes	PG*	Label	Additional information
TDG Classification	UN1202	DIESEL FUEL	3	III		-
DOT Classification	Not available.	Not available.	Not available.	-		-

PG* : Packing group

15 . Regulatory information

United States

HCS Classification

: Combustible liquid
Irritating material

Canada

WHMIS (Canada)

: Class B-3: Combustible liquid with a flash point between 37.8°C (100°F) and 93.3°C (200°F).
Class D-2B: Material causing other toxic effects (Toxic).

This product has been classified in accordance with the hazard criteria of the Controlled Products Regulations and the MSDS contains all the information required by the Controlled Products Regulations.

International regulations

Canada inventory

: All components are listed or exempted.

United States inventory (TSCA 8b)

: All components are listed or exempted.

Europe inventory

: All components are listed or exempted.

Prepared by:
Delta Engineering Ltd./Carter Industries Ltd. – A Joint Venture

16 . Other information

Label requirements : COMBUSTIBLE LIQUID AND VAPOUR. CAUSES EYE AND SKIN IRRITATION.

**Hazardous Material
Information System (U.S.A.)** :

Health	2
Flammability	2
Physical hazards	0
Personal protection	H

**National Fire Protection
Association (U.S.A.)** :



References

: Available upon request.
TMAC Marque de commerce de Petro-Canada - Trademark

Date of printing

: 12/17/2009.

Date of issue

: 3 July 2009

Date of previous issue

: No previous validation.

Responsible name

: **Product Safety - DSR**

■ Indicates information that has changed from previously issued version.

For Copy of (M)SDS

: Internet: www.petro-canada.ca/msds

Canada-wide: telephone: 1-800-668-0220; fax: 1-800-837-1228

For Product Safety Information: (905) 804-4752

Notice to reader

To the best of our knowledge, the information contained herein is accurate. However, neither the above-named supplier, nor any of its subsidiaries, assumes any liability whatsoever for the accuracy or completeness of the information contained herein.

Final determination of suitability of any material is the sole responsibility of the user. All materials may present unknown hazards and should be used with caution. Although certain hazards are described herein, we cannot guarantee that these are the only hazards that exist.

Prepared by:
Delta Engineering Ltd./Carter Industries Ltd. – A Joint Venture

SECTION 1 – PRODUCT INFORMATION

Product Name:	Propane	Supplier:	Superior Propane
Trade Name:	LPG (Liquefied Petroleum Gas), LP-Gas		A Division of Superior Plus LP
Chemical Formula:	C ₃ H ₈		1111 - 49th Avenue N.E.
WHMIS Classification:	Class A – Compressed Gas Class B, Division 1 – Flammable Gas		Calgary, AB T2E 8V2 Business: (403) 730-7500
		24-Hour Emergency Contact:	Canutec (613) 996-6666

Application and Use: Propane is commonly used as a fuel for heating, cooking, automobiles, forklift trucks, crop drying and welding and cutting operations. Propane is used in industry as a refrigerant, solvent and as a chemical feedstock.

SECTION 2 – HAZARDOUS INGREDIENTS

COMPONENTS	CAS No	% VOLUME (v/v)	LD 50 (RAT, ORAL)
Propane	74-98-6	90% -99%	Not Applicable
Propylene	115-07-1	0% - 5%	Not Applicable
Ethane	74-84-0	0% - 5%	Not Applicable
Butane and heavier hydro carbons	106-97-8	0% - 2.5%	Not Applicable

Occupational Exposure Limit:

Based upon animal test data, the acute toxicity of this product is expected to be inhalation: 4 hour LC50 = 280,000 ppm (Rat)

Note: Composition is typical for HD-5 Propane per The Canadian General Standard Board CGSB 3.14 National Standard of Canada. Exact composition will vary from shipment to shipment.

SECTION 3 – CHEMICAL AND PHYSICAL DATA

Form:	Liquid and vapour while stored under pressure	pH:	Not available
Boiling Point:	-42°C @ 1 atm	Solubility in Water :	Slight, 6.1% by volume @ 17.8°C
Freezing Point:	-188°C	Specific Gravity:	0.51 (water = 1)
Evaporation Rate:	Rapid (Gas at normal ambient conditions)	Appearance/Odour:	Colourless liquid and vapour while stored under pressure. Colourless and odourless gas in natural state at any concentration. Commercial propane has an odourant added, ethyl mercaptan, which has an odour similar to boiling cabbage.
Vapour Pressure:	1435 kPa (maximum) @ 37.8°C		
Vapour Density:	1.52 (Air = 1)		
Coefficient of Water/ Oil Distribution:	Not available	Odour Threshold:	4800 ppm

With proper handling, transportation and storage, adding a chemical odourant such as ethyl mercaptan has proven to be a very effective warning device, but all odourants have certain limitations. The effectiveness of the odourant may be diminished by a person's sense of smell, by competing odours and by oxidation which may cause a potentially dangerous situation.

SECTION 4 – FIRE OR EXPLOSION HAZARD

Flash Point:	-103.4°C
Method:	Closed cup
Flammable Limits:	Lower 2.4%, Upper 9.5%
Auto Ignition Temperature:	432°C
Hazardous Combustion Products:	Carbon monoxide can be produced when primary air and secondary air are deficient while combustion is taking place.
Fire and Explosive Hazards :	Explosive air -vapour allowed to leak to atmosphere.
Sensitivity to Impact:	No
Sensitivity to Static Discharge:	Yes

Fire Extinguishing Precautions: Use water spray to cool exposed cylinders or tanks. Do not extinguish fire unless the source of the escaping gas that is fueling the fire can be turned off. Fire can be extinguished with carbon dioxide and/or dry chemical (BC). Container metal shells require cooling with water to prevent flame impingement and the weakening of metal. If sufficient water is not available to protect the container shell from weakening, the area will be required to be evacuated. If gas has not ignited, liquid or vapour may be dispersed by water spray or flooding.

Special Fire Fighting Equipment: Protective clothing, hose monitors, fog nozzles, self-contained breathing apparatus.

SECTION 5 – REACTIVITY DATA

Stability:	Stable
Conditions to Avoid:	Keep separate from oxidizing agents. Gas explodes spontaneously when mixed with chloride dioxide.
Incompatibility:	Remove sources of ignition and observe distance requirements for storage tanks from combustible material, drains and openings to building.
MSDS-Propane-32003-2	(02/08)

Hazardous Decomposition Products: Deficient primary and secondary air can produce carbon monoxide.

Hazardous Polymerization: Will not occur.

Prepared by:

Delta Engineering Ltd./Carter Industries Ltd. – A Joint Venture

SECTION 6 – TOXICOLOGICAL PROPERTIES OF MATERIAL

Routes of Entry: Skin Contact, Eye Contact, Inhalation

Inhalation: Simple asphyxiant. No effect at concentrations of 10,000 ppm (peak exposures). Higher concentrations may cause central nervous system disorder and/or damage. Lack of oxygen may cause dizziness, loss of coordination, weakness, fatigue, euphoria, mental confusion, blurred vision, convulsions, breathing failure, coma and death. Breathing high vapour concentrations (saturated vapours) for a few minutes may be fatal. Saturated vapours may be encountered in confined spaces and/or under conditions of poor ventilation. Avoid breathing vapours or mist.

Skin and Eye Contact: Exposure to vaporizing liquid may cause frostbite (cold burns) and permanent eye damage.

Ingestion: Not considered to be a hazard.

Acute Exposure: Contact with Liquefied Petroleum Gas may cause frostbite or cold burns. Propane acts as a simple asphyxiant as oxygen content in air is displaced by the propane. At increasing concentration levels, propane may cause dizziness, headaches, loss of coordination, fatigue, unconsciousness and death.

Chronic Exposure: No reported effects from long term low level exposure.

Sensitization to Product: Not known to be a sensitizer.

Occupational Exposure Limits: American Conference of Governmental Industrial Hygienists (ACGIH) lists as a simple asphyxiant.

ACGIH TLV: 1000 ppm

Carcinogenicity, Reproductive Toxicity, Teratogenicity, Mutagenicity: No effects reported.

Other Toxicological Effects: None

SECTION 7 – PREVENTATIVE MEASURES

Eyes: Safety glasses or chemical goggles are recommended when transferring product.

Skin: Insulated gloves required if contact with liquid or liquid cooled equipment is expected. Wear gloves and long sleeves when transferring product.

Inhalation: Where concentration in air would reduce the oxygen level below 18% air or exceed occupational exposure limits in section 6, self-contained breathing apparatus is required.

Ventilation: Use in well-ventilated areas. Use with explosion proof mechanical ventilation in confined spaces or poorly ventilated areas.

SECTION 8 – EMERGENCY AND FIRST AID PROCEDURES

Eyes: Should eye contact with liquid occur, flush eyes with lukewarm water for 15 minutes. Obtain immediate medical care.

Skin: In case of "Cold Burn" from contact with liquid, immediately place affected area in lukewarm water and keep at this temperature until circulation returns. If fingers or hands are frostbitten, have the victim hold his hand next to his body such as under the armpit. Obtain immediate medical care.

Ingestion: None considered necessary.

Inhalation: Remove person to fresh air. If breathing is difficult or has stopped, administer artificial respiration. Obtain immediate medical care.

Spill or Leak: Eliminate leak if possible. Eliminate source of ignition. Ensure cylinder is upright. Disperse vapours with hose streams using fog nozzles. Monitor low areas as propane is heavier than air and can settle into low areas. Remain upwind of leak. Keep people away. Prevent vapour and/or liquid from entering into sewers, basements or confined areas.

SECTION 9 – TRANSPORTATION, HANDLING AND STORAGE

- Transport and store cylinders and tanks secured in an upright position in a ventilated space away from ignition sources (so the pressure relief valve is in contact with the vapour space of the cylinder or tank).
- Cylinders that are not in use must have the valves in the closed position and be equipped with a protective cap or guard.

- Do not store with oxidizing agents, oxygen, or chlorine cylinders.

- Empty cylinders and tanks may contain product residue. Do not pressurize, cut, heat or weld empty containers.

- Transport, handle and store according to applicable federal and provincial codes and regulations.

Transportation of Dangerous Goods (TDG)

TDG Classification: Flammable Gas 2.1

TDG Shipping Name: Liquefied Petroleum Gas (Propane)

PIN Number: UN1075

SECTION 10 – PREPARATION INFORMATION

Prepared by: Superior Propane
Health Safety and Environment Team

Telephone: (403) 730-7500
Revision: March 1, 2008
Supersedes: March 24, 2005

The information contained herein is believed to be accurate. It is provided independently of any sale of the product. It is not intended to constitute performance information concerning the product. No express warranty, implied warranty of merchantability or fitness for a particular purpose is made with respect to the product information contained herein.

Appendix C – NU Spill Report Form

Prepared by:
Delta Engineering Ltd./Carter Industries Ltd. – A Joint Venture



NT-NU SPILL REPORT

EMAIL: spills@gov.nt.ca

REPORT LINE USE ONLY

PAGE 1 OF

IQALUIT753275-V2

Appendix D – Instructions for Completing the Spill Report Form

Instructions for Completing the NT-NU Spill Report Form	
<p>This form can be filled out electronically and faxed to the spill line at 867-873-6924. Commencing on January 2, 2007, the form can also be e-mailed as an attachment to spills@gov.nt.ca. Until further notice, please verify receipt of e-mail transmissions with a follow-up telephone call. Spills can still be phoned in by calling collect at 867-920-8130.</p>	
A. Report Date/Time	The actual date and time that the spill was reported to the spill line. If the spill is phoned in, the Spill Line will fill this out. Please do not fill in the Report Number: the spill line will assign a number after the spill is reported.
B. Occurrence Date/Time	Indicate, to the best of your knowledge, the exact date and time that the spill occurred. Not to be confused with the report date and time (see above).
C. Land Use Permit Number /Water Licence Number	This only needs to be filled in if the activity has been licenced by the Nunavut Water Board and/or if a Land Use Permit has been issued. Applies primarily to mines and mineral exploration sites.
D. Geographic Place Name	In most cases, this will be the name of the city or town in which the spill occurred. For remote locations – outside of human habitations – identify the most prominent geographic feature, such as a lake or mountain and/or the distance and direction from the nearest population center. You must include the geographic coordinates (Refer to Section E).
E. Geographic Coordinates	This only needs to be filled out if the spill occurred outside of an established community such as a mine site. Please note that the location should be stated in degrees, minutes and seconds of Latitude and Longitude.
F. Responsible Party Or Vessel Name	This is the person who was in management/control/ownership of the substance at the time that it was spilled. In the case of a spill from a ship/vessel, include the name of the ship/vessel. Please include full address, telephone number and e-mail. Use box K if there is insufficient space. Please note that, the owner of the spilled substance is ultimately responsible for any spills of that substance, regardless of who may have actually caused the spill.
G. Contractor involved?	Were there any other parties/contractors involved? An example would be a construction company who is undertaking work on behalf of the owner of the spilled substance and who may have contributed to, or directly caused the spill and/or is responding to the spill.
H. Product Spilled	Identify the product spilled; most commonly, it is gasoline, diesel fuel or sewage. For other substances, avoid trade names. Wherever possible, use the chemical name of the substance and further, identify the product using the four digit UN number (eg: UN1203 for gasoline; UN1202 for diesel fuel; UN1863 for Jet A & B).
I. Spill Source	Identify the source of the spill: truck, ship, home heating fuel tank and, if known, the cause (eg: fuel tank overflow, leaking tank; ship ran aground; traffic accident, vandalism, storm, etc.). Provide an estimate of the extent of the contaminated/impacted area (eg: 10 m ²).
J. Factors Affecting Spill	Any factors which might make it difficult to clean up the spill: rough terrain, bad weather, remote location, lack of equipment. Do you require advice and/or assistance with the cleanup operation? Identify any hazards to persons, property or equipment: for example, a gasoline spill beside a daycare centre would pose a safety hazard to children. Use box K if there is insufficient space.
K. Additional Information	Provide any additional, pertinent details about the spill, such as any peculiar/unique hazards associated with the spilled material. State what action is being taken towards cleaning up the spill; disposal of spilled material; notification of affected parties. If necessary, append additional sheets to the spill report. Number the pages in the same format found in the lower right hand corner of the spill form: eg. "Page 1 of 2", "Page 2 of 2" etc. Please number the pages to ensure that recipients can be certain that they received all pertinent documents. If only the spill report form was filled out, number the form as "Page 1 of 1".
L. Reported to Spill Line by	Include your full name, employer, contact number and the location from which you are reporting the spill. Use box K if there is insufficient space.
M. Alternate Contact	Identify any alternate contacts. This information assists regulatory agencies to obtain additional information if they cannot reach the individual who reported the spill.
N. Report Line Use Only	Leave Blank. This box is for the Spill Line's use only.

Prepared by:
Delta Engineering Ltd./Carter Industries Ltd. – A Joint Venture

Appendix E – Immediately Reportable Spill Quantities

Immediately Reportable Spill Quantities

TDG Class	Substance for NWT 24 Hour Spill Line	Immediately Reportable Quantities
1 2.3 2.4 6.2 7 None	Explosives Compressed gas (toxic) Compressed gas (corrosive) Infectious substances Radioactive Unknown substance	Any amount
2.1 2.2	Compressed gas (flammable) Compressed gas (non-corrosive, non-flammable)	Any amount of gas from containers with a capacity greater than 100 L
3.1 3.2 3.3	Flammable liquids	> 100 L
4.1 4.2 4.3	Flammable solids Spontaneously combustible solids Water reactant	> 25 kg
5.1 9.1	Oxidizing substances Miscellaneous products or substances excluding PCB mixtures	> 50 L or 50 kg
5.2 9.2	Organic peroxides Environmentally hazardous	> 1 L or 1 kg
6.1 8 9.3	Poisonous substances Corrosive substances Dangerous wastes	> 5 L or 5 kg
9.1	PCB mixtures of 5 or more ppm	> 0.5 L or 0.5 kg
None	Other contaminants (e.g. crude oil, drilling fluid, produced water, waste or spent chemicals, used or waste oil, vehicle fluids, waste water, etc.)	> 100 L or 100 kg
None	Sour natural gas (i.e. contains H ₂ S) Sweet natural gas	Uncontrolled release or sustained flow of 10 minutes or more

In addition, all releases of harmful substances, regardless of quantity, are to be reported to the NWT spill line if the release is near or into a water body, is near or into a designated sensitive environment or sensitive wildlife habitat, poses imminent threat to human health or safety, poses imminent threat to a listed species at risk or its critical habitat, or is uncontrollable.

Prepared by:
Delta Engineering Ltd./Carter Industries Ltd. – A Joint Venture