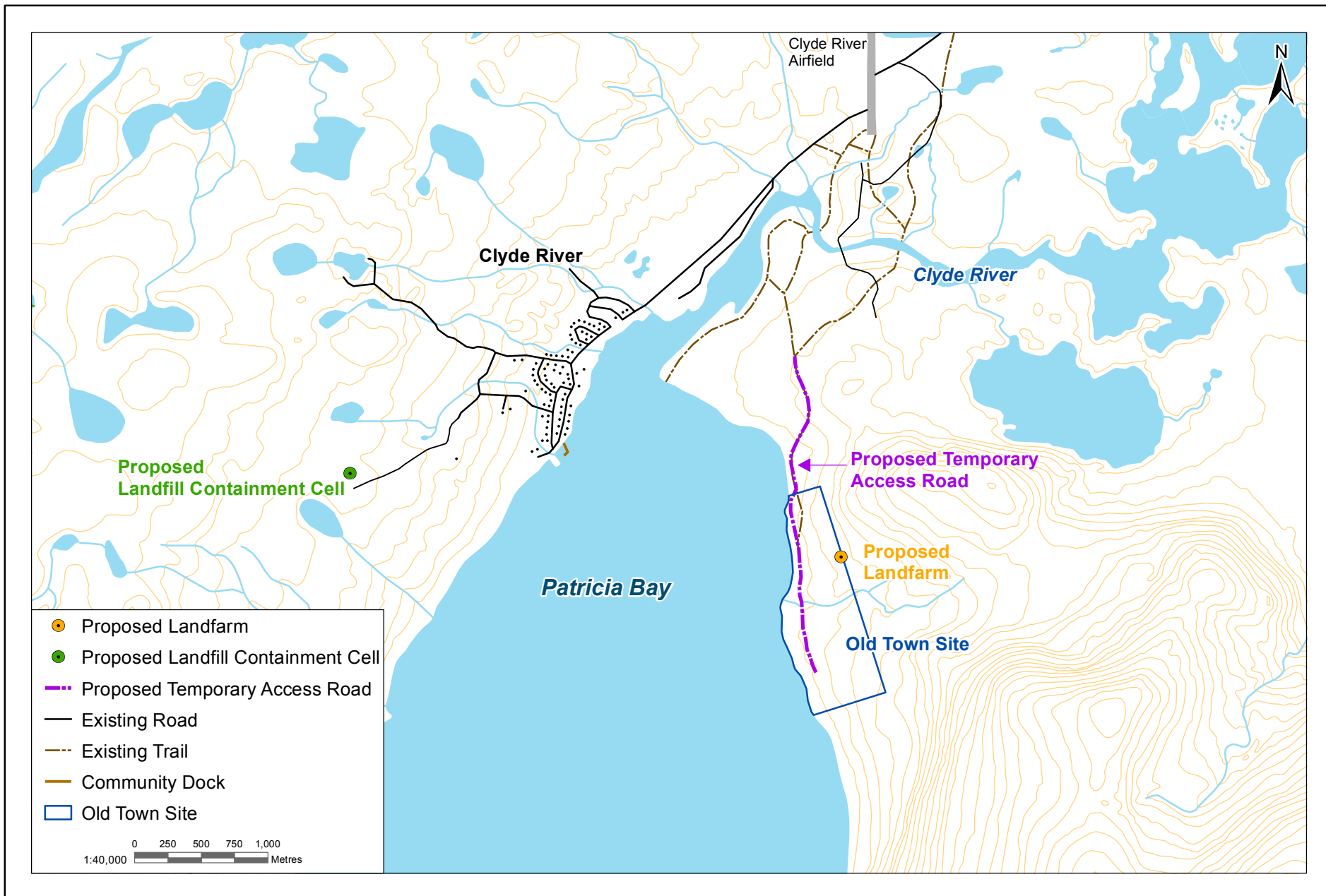


APPENDIX A

Figures



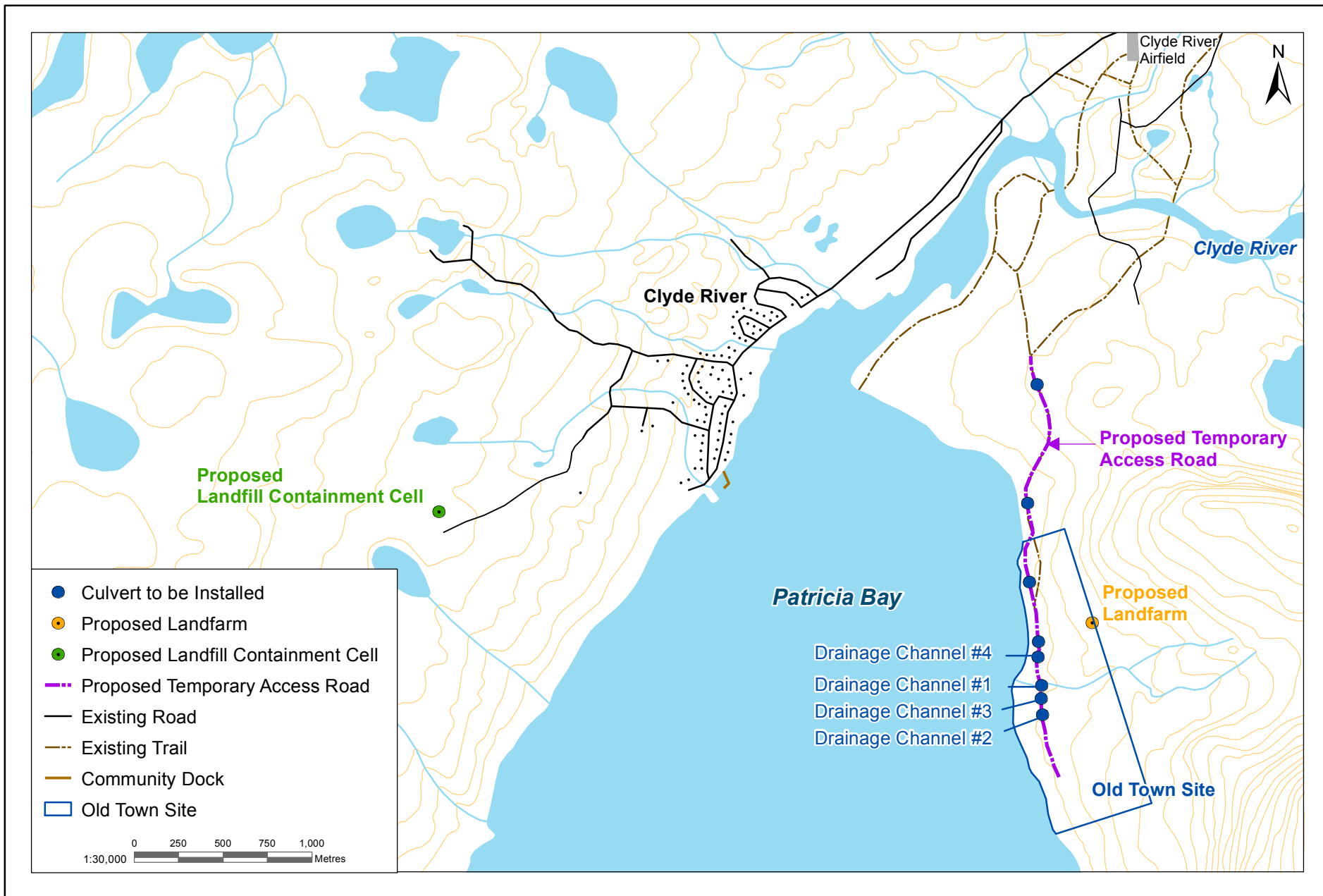
Landfill, Landfarm and Access Road Development at Clyde River, NU

Clyde River Old Town Site Remediation Overview

Acknowledgements: Original Drawing by Nunami Stantec; NTS Data: Sheet 027F08, 1:50,000 provided by Government of Canada, Natural Resources Canada, Centre for Topographic Information.

PREPARED BY	
PREPARED FOR	
FIGURE NO.	1

Last Modified: 08. 07. 2012 By: jachs V:\1102\active\110216433\gal\XDO_20120607\Figure_1_Overview.mxd



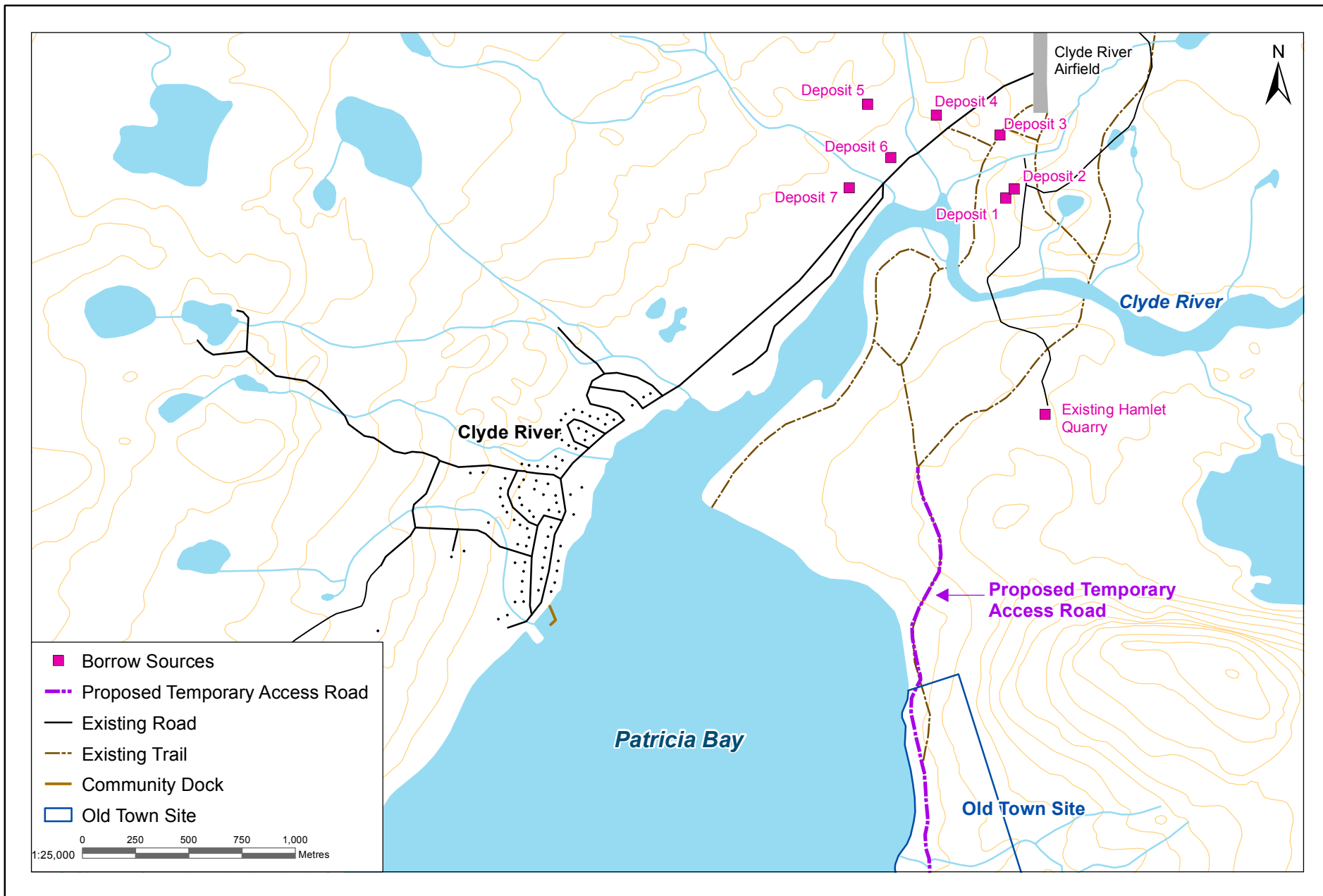
Landfill, Landfarm and Access Road Development at Clyde River, NU

Clyde River Old Town Site Remediation - Watercrossings

Acknowledgements: Original Drawing by Nunami Stantec; NTS Data: Sheet 027F08, 1:50,000 provided by Government of Canada, Natural Resources Canada, Centre for Topographic Information.

PREPARED BY	
PREPARED FOR	
FIGURE NO.	2

Last Modified: 08.07.2012 By: jachs V:\1102\active\110216433\gal\XDO_20120307\Figure_1_Overview.mxd



Landfill, Landfarm and Access Road Development at Clyde River, NU

Clyde River Old Town Site Remediation - Borrow Sources

Acknowledgements: Original Drawing by Nunami Stantec; NTS Data: Sheet 027F08, 1:50,000 provided by Government of Canada, Natural Resources Canada, Centre for Topographic Information.

PREPARED BY	
PREPARED FOR	
FIGURE NO.	3

Last Modified: 08_07_2012 By: jachs V:\1102\active\110216433\gal\X00_20120307\Figure_1_Overview.mxd