



Since 1957

1142 Roland Street
Thunder Bay, ON
P7B 5M4

Tel: 807-623-9495
Fax: 807-623-8070
thunderbay@trow.com

Buildings

Environment

Geotechnical

Infrastructure

Materials & Quality

www.trow.com

One Company.
One Contact.
One Stop.



December 1, 2005

Reference: F-90132

Mr. Paul Brugger
Barrick Gold Corporation
171 Copper Cliff Road East
Station F
Thunder Bay, ON P7C 5V5

***Shear Lake Encapsulated Waste Rock Stockpile
Cullaton Lake Gold Mine, Nunavut
Licence NWB1CUL020***

Dear Sirs:

Further to your authorization, Trow arranged for a topographic survey of the Shear Lake Encapsulated Waste Rock Stockpile at the Cullaton Lake Gold Mine Site. The survey was performed on August 3, 2005 by Delta Survey Inc., under subcontract to Trow, during our annual tailings dam inspection. It was performed to address a requirement of the Nunavut Water Board, which states the following:

".... suitable drawing(s) showing the as-built location of the encapsulated waste rock pile and its relationship to the site with respect to drainage and sensitive areas, its dimensions and cross sections....."

The attached Figures 1 and 2 show the site plan and two typical cross sections, respectively.

Figure 1 indicates that generally, surface drainage from the stockpile is directed to the east, away from Shear Lake.

Trow was not present during the construction of the stockpile, reportedly in 2001. However, our observations suggest that the stockpile is covered with a layer of locally sourced glacial till, placed and compacted into a relatively low permeability cover. This was subsequently seeded and was re-seeded in early August 2005.

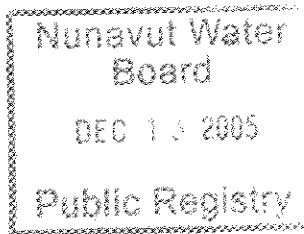
We trust that this letter is sufficient for your current requirements. Should you require clarification of some point, please contact the undersigned.

Yours truly,

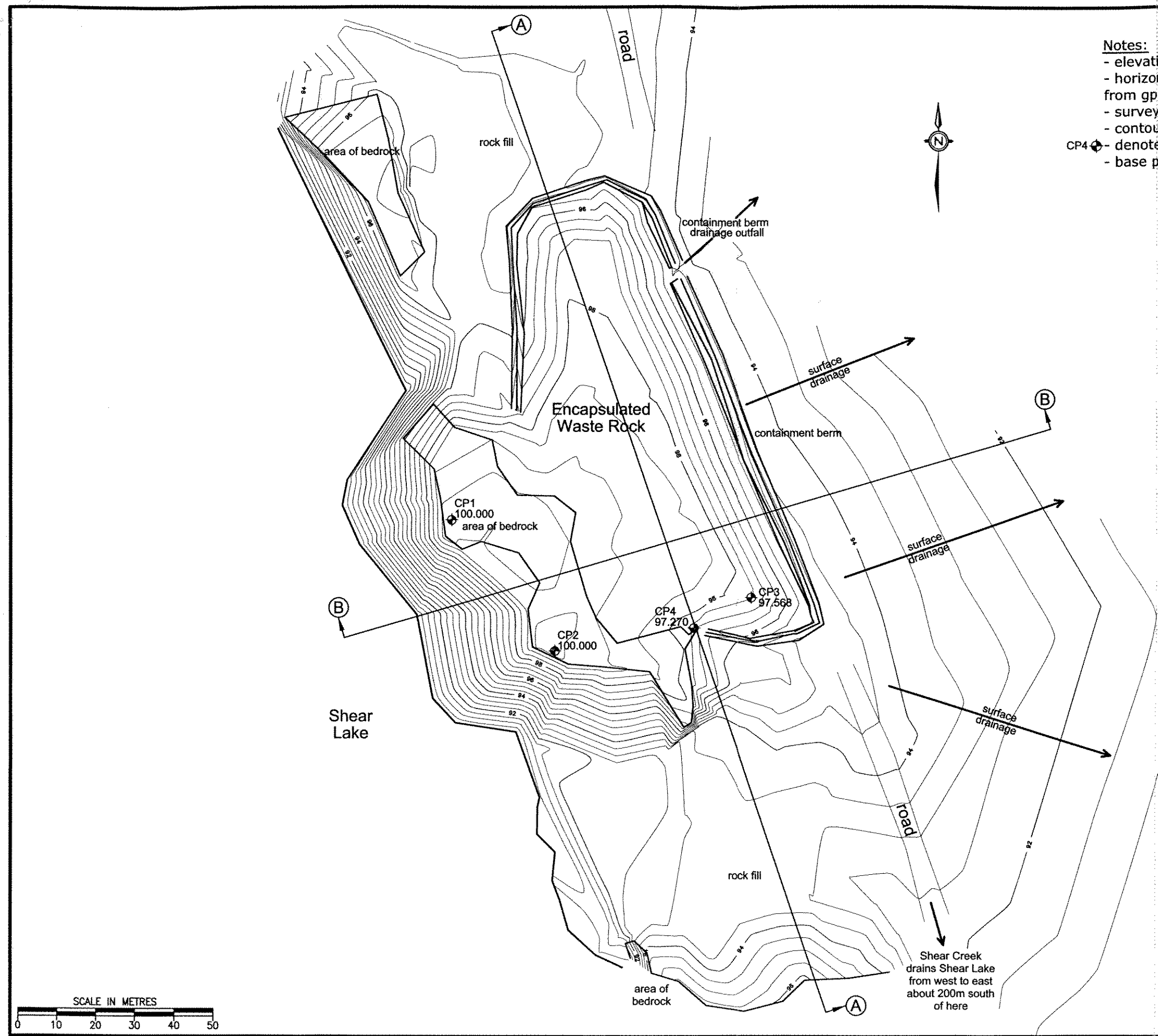
Trow Associates Inc.

Prepared by:

Demetri N. Georgiou, M.A.Sc., P.Eng.
Branch Manager/Principal Engineer




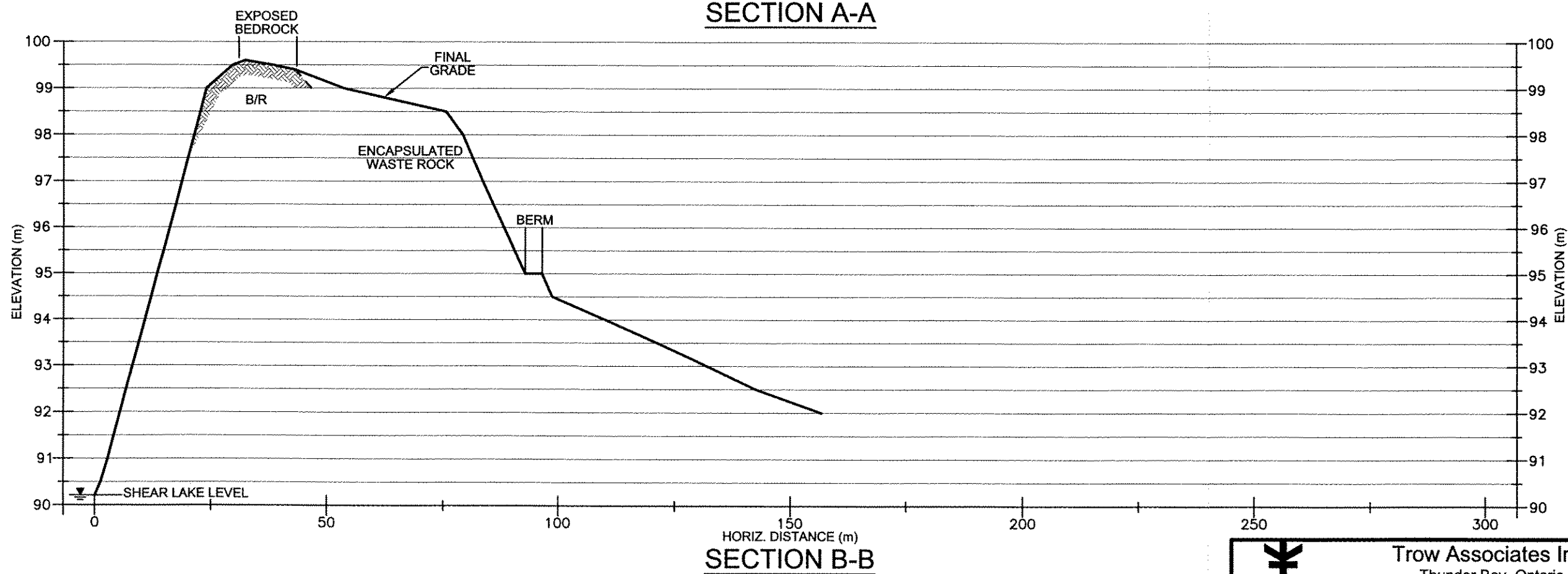
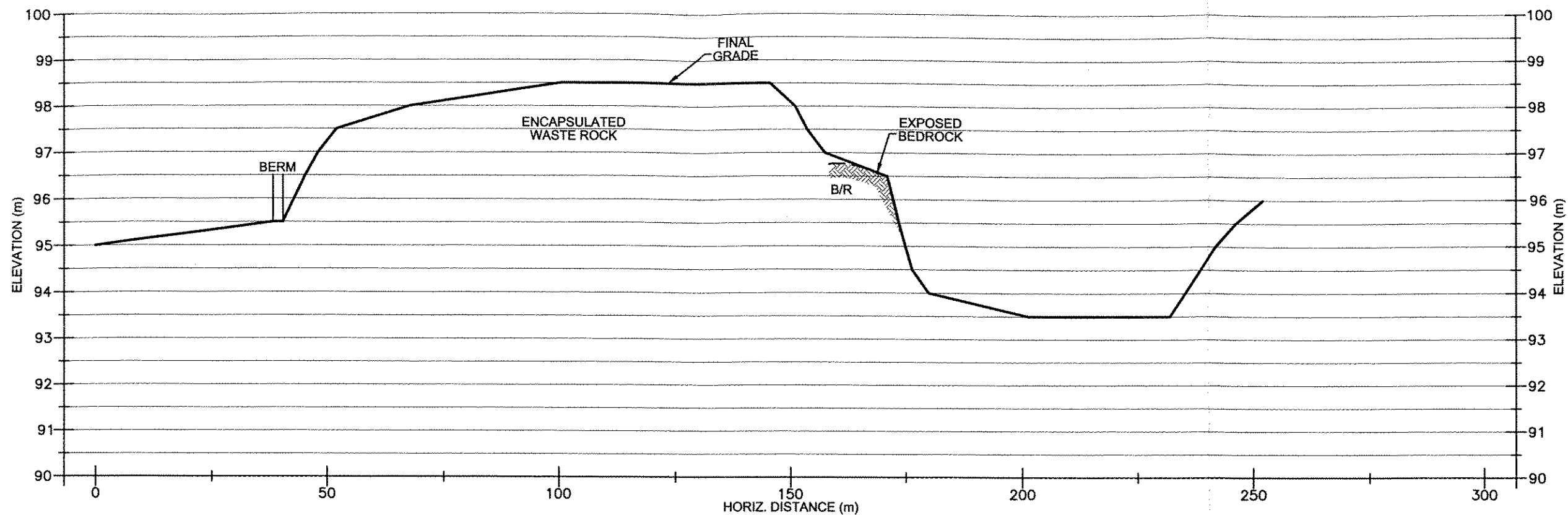
Attachments: Figures 1 and 2




- Notes:**
- elevations are relative to control point #1, assumed elevation 100.00m
 - horizontal coordinates are relative to control points #1 and #2, derived from gps coordinates
 - survey conducted August 3, 2005
 - contour interval 0.5 meters, index contour interval 2.0 meters
 - CP4 - denotes existing or set control point
 - base plan by Delta Survey Inc, Aug. 8/2005



 Trow	Trow Associates Inc. Thunder Bay, Ontario	FIGURE 1
<div>SITE PLAN</div> <div>Drainage Survey-Shear Lake Encapsulated Waste Rock and Vicinity Cullaton Lake, NU Barrick Gold Inc.</div>		PROJECT NO.: F-90132-A/G
		SCALE: 1:1000
		DRAWN BY: DT
		CHECKED BY: DG
		DATE: NOV. 28, 2005



 Trow	Trow Associates Inc. Thunder Bay, Ontario	FIGURE 2
	SECTIONS Drainage Survey-Shear Lake Encapsulated Waste Rock and Vicinity Cullaton Lake, NU Barrick Gold Inc.	PROJECT NO.: F-90132-A/G SCALE: 1:1000H/1:100V DRAWN BY: DT CHECKED BY: DG DATE: NOV. 28, 2005