

Memorandum

To	Stephen Hooey - AANDC	Page 1
CC	Matt McElwaine - PWGSC	
Subject	Durban Island and Padloping Island – NWB Condition for the Provision of Landfarm Monitoring Wells	
From	Barry Fedorak - AECOM	
Date	July 17, 2013	Project Number 60214959

In response to the Nunavut Water Board's request for the provision of upgradient and downgradient monitoring wells for the landfarm treatment facilities at the Padloping and Durban Island sites, AECOM submits the following discussion regarding this item.

The landfarm treatment areas at Padloping and Durban Island are temporary facilities and expected to be in operation for only one or two summer construction seasons. There are no requirements for long term monitoring of landfarm treatment areas in the Abandoned Military Site Remediation Protocol which forms the framework for site remediation requirements. There is provision in the contract for a baseline soil sampling and analysis program in the area of the stockpile and treatment areas to verify existing conditions, as well as a confirmatory testing program to be provided by the contractor for these areas upon completion of the treatment operations. This level of environmental monitoring is considered suitable with respect to these types of facilities and time frame for which they are expected to operate. If these landfarms are operational for longer than two years, then the provision of monitoring wells and groundwater sampling and testing would be considered suitable for monitoring purposes.

We trust that this information meets with your requirements. Please contact the undersigned should you require additional information.

Sincerely,
AECOM Canada Ltd.



Barry Fedorak, P.Eng.
Senior Project Engineer
barry.fedorak@aecom.com

Amendment Application: Durban and Padloping Island

BR1-DPI1217

Summary

Aboriginal Affairs and Northern Development Canada (AANDC) requests three changes to the water licence.

1. Part D, #16: Sampling and analysis of borrow material

Borrow sources on Padloping and Durban Islands are highly unlikely to show any acid rock drainage or metal leaching potential. Therefore, we do not believe further evaluation through geochemical testing is warranted and request that the board review and consider removing this provision.

2. Part K, #2, DPI 5, DPI-6, DPI-8 and DPI-9: Monitoring Wells for Landfarms

We believe the provision of monitoring wells to support landfarm operations for this project are not required and request the board review and consider removing this provision. A baseline soil sampling and analysis program in the area of the stockpile and treatment areas will be used to verify existing conditions and a confirmatory testing program will be conducted upon completion of operations.

If landfarm operation continues for more than two years monitoring wells will be installed.

3. Water Source Change –Padloping Island

The water source originally planned cannot be accessed reliably. A small stream close to the camp will be used for water. Water usage will be less than 4 m³/day from this source.

ᐱᓯᔭᕐᑲᑐᑦ ᐃᑲᑐᑭᑎᓂ: ᑐᐸ^a ᐱᒻᒪᑐ ᐸᑦᑐᐱ^b ᕿᑭᕿᑲᑕᐱᑦ

BR1-DPI1217

ᐃᓄᑦᐱᓂᒃ ᐸᓂᓂᓂᒃ

[illegible]

1. ልረጃ D, ሕዋስ 16: ነፍሱን በእርሱ ውስጥ የሚያስቀምጥበት ስልጣኑን እናውቃለን

[illegible]

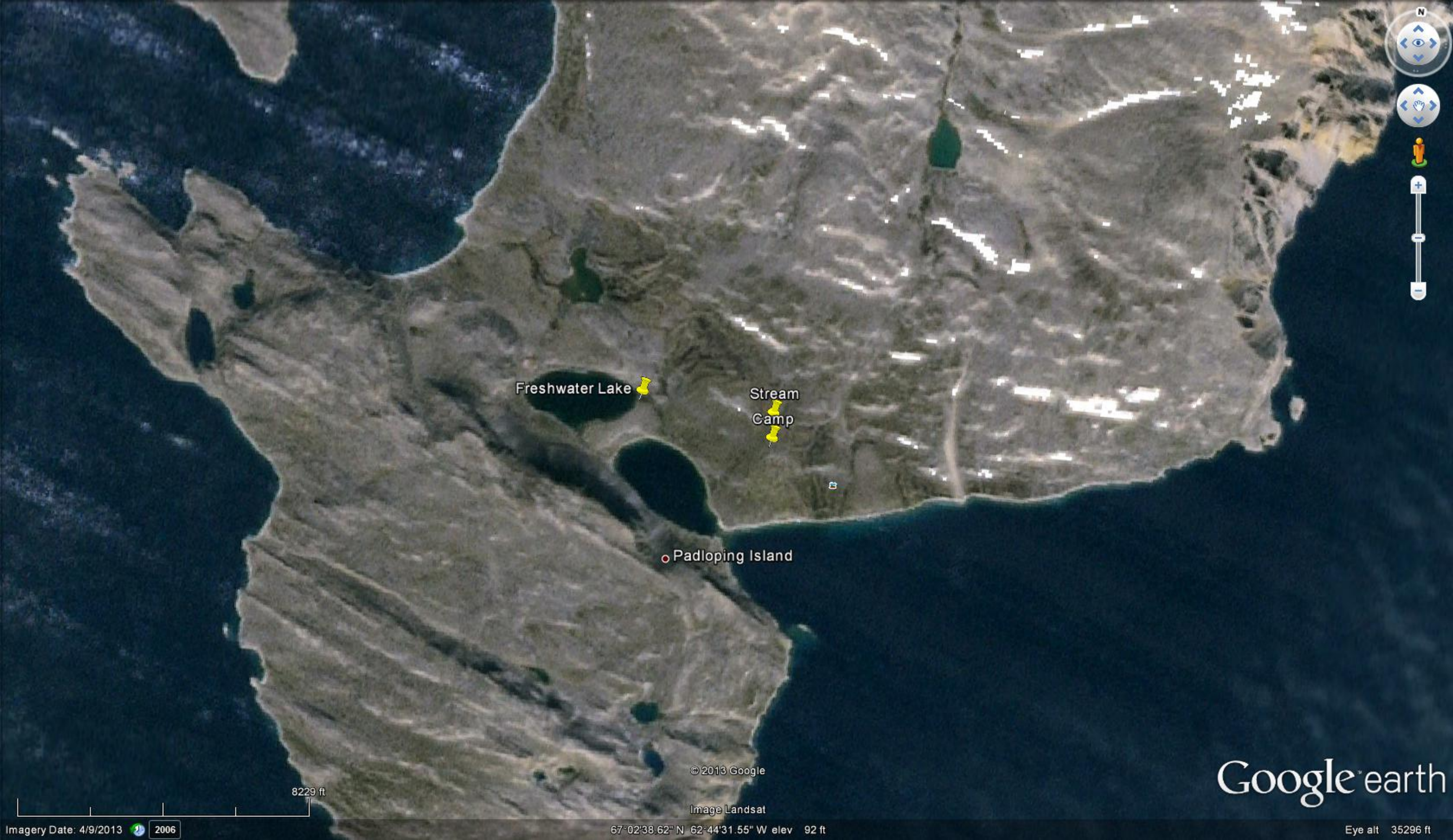
2. Δαῖμα K, ὁξυδάν 2, DPI 5, DPI-6, DPI-8 Ἀπὸ DPI-9: Γραμμάτιο
Διγλυκόζης πρὶν καὶ μετὰ τὴν αἵματος ἐκκαθάριση ἀποδοτικῶς
ἀφαιρέσειται

[illegible]

$\Gamma \Delta \sigma \eta \sigma^{\zeta b} \Delta \zeta^{\zeta b} \zeta \Delta^{\zeta a} \Delta^{\zeta \zeta} \zeta \sigma^{\zeta} \zeta^{\zeta a} \sigma^{\zeta b} \Delta^{\zeta} \zeta \zeta^{\zeta} \Delta^{\zeta} \Delta^{\zeta b} \zeta \Delta^{\zeta} \Delta^{\zeta b}$
 $\Delta^{\zeta} \rho \zeta \Delta^{\zeta b} \zeta \Delta^{\zeta} \zeta^{\zeta b} \zeta^{\zeta b}$

3. $\Delta \Gamma^{\text{cb}} C^{\text{cb}} \delta \triangleright_{\text{r}^{\text{cb}}} <^c_{\text{c}} \Delta L \Gamma^c \dot{\circ} C \triangleright \sigma \cup \cup \gamma^{\text{cb}} C^{\text{cb}}$

[illegible]



Navigation controls including a compass, a hand icon for panning, a person icon for street view, and a vertical zoom slider with '+' and '-' buttons.

Freshwater Lake

Stream
Camp

Padloping Island

© 2013 Google

Image Landsat

Google[®] earth

8229 ft

Imagery Date: 4/9/2013 2006

67°02'38.62" N 62°44'31.55" W elev 92 ft

Eye alt 35296 ft