

UMA Engineering Ltd.
2540 Kensington Road NW
Calgary, Alberta T2N 3S3
T 403.270.9200 F 403.270.0399 www.uma.aecom.com

March 31, 2006

Project Number: DYE-M (3.6)

Phyllis Beaulieu
Licensing Manager
Nunavut Water Board
P.O. Box 119
Gjoa Haven, NU X0B 1J0

Dear Ms. Beaulieu:

Re: 2005 Annual Report: Water Use License #NWB5DYE0409

UMA Engineering Ltd. is pleased to submit this annual report as per the requirements of Part B.1 of water use license NWB5DYE0409. The report was prepared on behalf of Defence Construction Canada and the Department of National Defence.

Water Usage

The following table provides a summary of the water usage from the Summer Water Supply Lake and the sewage effluent discharged to the sewage lagoon.

Month	Quantity of Water Extracted (cubic metres)	Quantity of Effluent Discharged (cubic metres)
June	195	155
July	512	410
August	272	218
September	190	152

One effluent sample was collected by the contractor on August 12, 2005 and submitted to Accutest Laboratories Ltd. in Ottawa, ON for analysis. No other information was provided by the contractor. The following table provides a summary of the results.

Parameter	Units	Concentration
Faecal Coliforms	cfu/100 mL	95,000
Biological Oxygen Demand	mg/L	23
pH	pH units	7.46
Total Suspended Solids	mg/L	155
Oil & Grease	mg/L	<5

Phyllis Beaulieu
Licensing Manager
Nunavut Water Board
March 31, 2006

There was no discharge events recorded in 2005.

Summary of Completed Work in 2005

The majority of the work at the DYE-M site focused on granular material extraction and construction of the Lower Site Tier II Soil Disposal Facility and landfarm. Removal of debris, contaminated soil and advanced demolition will occur once the new disposal facilities have been completed and are ready to receive waste materials. Approximately 55,000 m³ of granular materials were extracted for construction purposes. The work plan for 2006 is to continue with the clean up program as described in the 2003 Project Description.

Demolition: Asbestos abatement has been completed in Module Train C, Power and Equipment Building, Switching Centre, and Abandoned Powerhouse. Batteries were removed from the switching building and placed in two sea-cans. Three sea-cans have been filled with PCB amended painted material from demolition activities. The sea-cans were placed in the Temporary PCB Storage Area.

Landfarm: The landfarm area constructed in 1999 is being expanded to fit current requirements. Approximately 3600 m³ of hydrocarbon contaminated soil has been removed and placed in the landfarm.

Tier II Soil Disposal Facilities: Construction of the Lower Site Tier II facility has started, including key trench excavation, intermediate berm construction and leveling course. It is anticipated the Lower Site Tier II Facility will be completed in 2006 and will then begin to receive Tier II contaminated soil.

Non-Hazardous Waste Landfills: Not started.

Contaminated Soil Removal: Not started.

Landfill Remediation: Not started.

Debris Removal: Not started.

Community Meetings

Community meetings will be held by the contractor prior to the start of the 2006 season in Qikiqtarjuaq, Pangnirtung, and Clyde River.

Spill Incidences

No spill incidences were reported to the Spill Report Line at DYE-M in 2005.

Phyllis Beaulieu
Licensing Manager
Nunavut Water Board
March 31, 2006

Overall Site Plans and the location of the construction camp are attached.

We trust the information provided is consistent with the requirements of Water Use License #NWB5DYE0409.
Please feel free to contact the undersigned if you have any questions or comments.

Sincerely,

UMA Engineering Ltd.



Eva Schulz, P.Ag.
Environmental Scientist
eva.schulz@uma.aecom.com

Encl. Project Drawings







cc: Philip Warren, DCC
Sarah Gagné, NWB



General Notes:

1. ALL COORDINATES ARE REFERENCED TO UTM ZONE 20N, NAD83.
2. ALL NON-HAZARDOUS DEBRIS FROM SOURCES WEST OF BORROW AREA #7 TO BE PLACED IN LOWER SITE NON-HAZARDOUS WASTE LANDFILL. ALL NON-HAZARDOUS DEBRIS FROM SOURCES EAST OF BORROW AREA #7 TO BE PLACED IN UPPER SITE NON-HAZARDOUS WASTE LANDFILL.
3. REFER TO TABLE 02219-1 IN SPECIFICATIONS FOR DESCRIPTION OF DEBRIS AREAS.

Legend:

- | | |
|---|---|
|  | PHOTOGRAPHIC VIEWPOINT |
|  | TEST PIT LOCATION |
|  | BODY OF WATER |
|  | APPROXIMATE EXTENT OF DEBRIS AREAS |
|  | APPROXIMATE EXTENT OF BORROW AREAS |
|  | APPROXIMATE LOCATION OF PROPERTY BOUNDARIES |

No.	DATE	REVISION	REVISION	APPR
-----	------	----------	----------	------



THE ASSOCIATION OF
PROFESSIONAL ENGINEERS,
GEOLOGISTS and GEOPHYSICISTS
OF THE NORTHWEST TERRITORIES
PERMIT NUMBER
P 007
UMA ENGINEERING
LTD.

SEE

SCALE - ECHELLE 400 200 0 400 800 1200m

PROJECT - PROJCT
DYE-M CAPE DYER

DEW LINE CLEAN UP

© COPYRIGHT
HER MAJESTY THE QUEEN IN RIGHT OF
CANADA 2003, AS REPRESENTED BY THE
MINISTER OF NATIONAL DEFENCE.

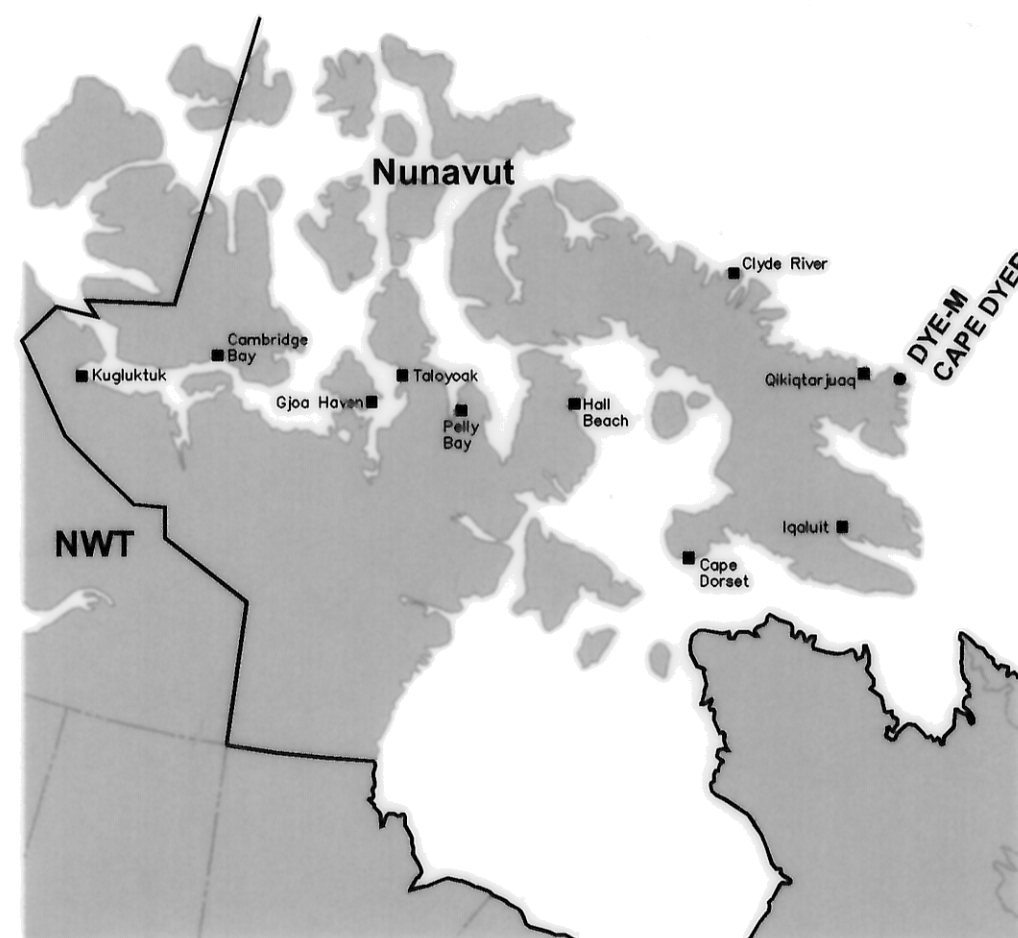
TRADE - METIER	SITING	DATE
		2003-12-16

OVERALL SITE PLAN

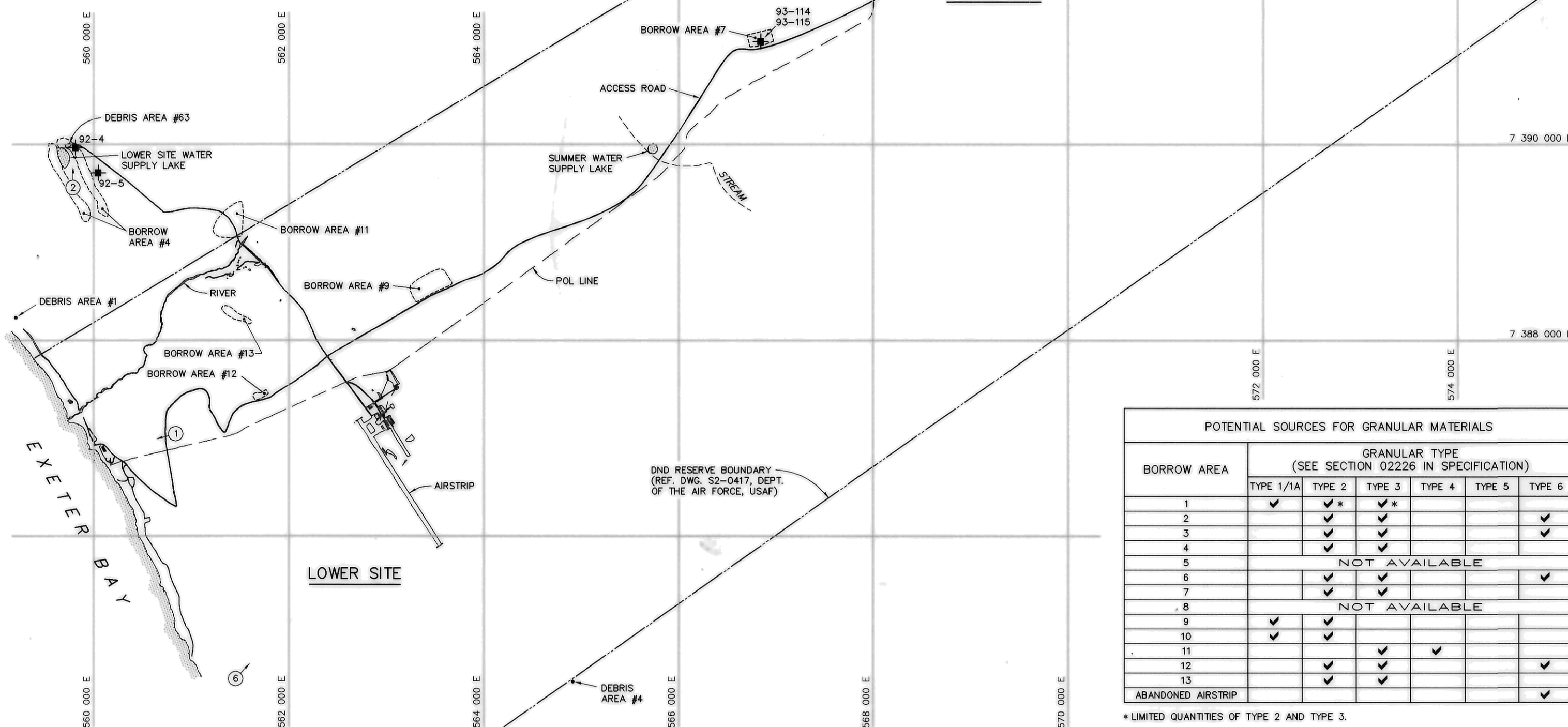
PRODUCTION	CONCURRENCE - ASSENTIMENT	
DESIGNED ETUDE <i>BWF/CY</i>		DES OFF AGENT CONCEPT
DRAWN DESSINE <i>IC/CAE</i>		SECT HD CHEF SECT
CHECKED VERIFIE <i>RRM</i>		DES MGR GEST CONCEPT
COORDINATION <i>SMS</i>	REVIEWED - REVU	

DWG. NO. — DESSIN NO.
H-C75/1-9101-101

Canada

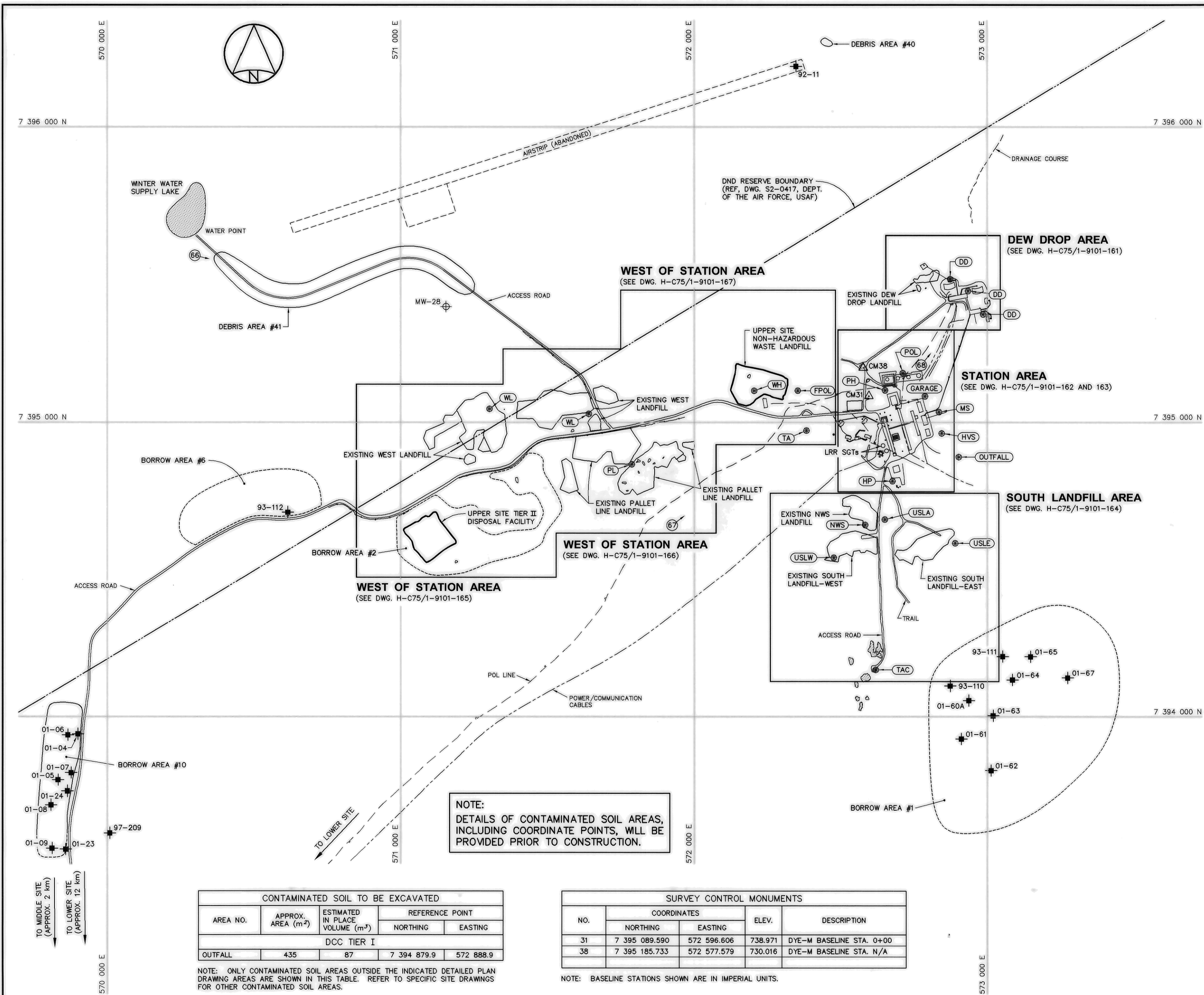


LOCATION OF CAPE DYER WITHIN NUNAVUT TERRITORY



POTENTIAL SOURCES FOR GRANULAR MATERIALS						
BORROW AREA	GRANULAR TYPE (SEE SECTION 02226 IN SPECIFICATION)					
	TYPE 1/1A	TYPE 2	TYPE 3	TYPE 4	TYPE 5	TYPE 6
1	✓	✓ *	✓ *			
2		✓	✓			✓
3		✓	✓			✓
4		✓	✓			
5	NOT AVAILABLE					
6		✓	✓			✓
7		✓	✓			
8	NOT AVAILABLE					
9	✓	✓				
10	✓	✓				
11			✓	✓		
12		✓	✓			✓
13		✓	✓			
ABANDONED AIRSTRIP						✓

* LIMITED QUANTITIES OF TYPE 2 AND TYPE 3



**National
Défense**
**Défense
nationale**

**Headquarters
Quartier général**

General Notes:

1. ALL COORDINATES ARE REFERENCED TO UTM ZONE 20N, NAD83.
2. HORIZONTAL CONTROL REFERENCED TO SURVEY CONTROL MONUMENTS.
3. ALL DIMENSIONS ARE IN METRES UNLESS NOTED OTHERWISE.
4. ALL NON-HAZARDOUS DEBRIS WITHIN PLAN AREA TO BE PLACED IN UPPER SITE NON-HAZARDOUS WASTE LANDFILL.
5. REFER TO TABLE 02219-1 IN SPECIFICATIONS FOR DESCRIPTION OF DEBRIS AREAS.
6. ALL LONG RANGE RADAR (LRR) FACILITIES ARE CURRENTLY OPERATIONAL AND ARE NOT TO BE DISTURBED. SEE DWGS. H-C75/1-9101-202 AND 203 FOR ADDITIONAL DETAILS.
7. ALL SURFACE DEBRIS IS TO BE REMOVED FROM ALL CONTAMINATED SOIL AREAS AND EXISTING AND NEW LANDFILL AREAS PRIOR TO ANY FILL PLACEMENT OR EXCAVATION TAKING PLACE.

Legend:

- CM31 SURVEY CONTROL MONUMENT
- CONTAMINATED AREA
- TEST PIT LOCATION
- PHOTOGRAPHIC VIEWPOINT
- BODY OF WATER
- APPROXIMATE EXTENT OF DEBRIS AREA

No.	DATE	REVISION	REVISION	APPR.

THE ASSOCIATION OF
PROFESSIONAL ENGINEERS,
GEOLOGISTS AND GEOPHYSICISTS
OF THE NORTHWEST TERRITORIES
PERMIT NUMBER
P. 007
UMA ENGINEERING
LTD.

uma **SHI**

SCALE - ECHELLE 100 50 0 100 200 300m

PROJECT - PROJET
DYE-M CAPE DYER

DEW LINE CLEAN UP

© COPYRIGHT
HER MAJESTY THE QUEEN IN RIGHT OF
CANADA 2003, AS REPRESENTED BY THE
MINISTER OF NATIONAL DEFENCE.

TRADE - METIER	SITING	DATE
		2003-12-16

SUBJECT - SUJET

**UPPER SITE
PROJECT LAYOUT**

PRODUCTION	CONCURRENCE - ASSENTMENT
DESIGNED ETUDIE <i>BWF/CY</i>	DES OFF AGENT CONCEPT
DRAWN DESSINE <i>IC/CAE</i>	SECT HD CHEF SECT
CHECKED VERIFIE <i>RRM</i>	DES MGR GEST CONCEPT
COORDINATION <i>SMS</i>	REVIEWED - REVU

DWG. NO. - DESSIN NO.
H-C75/1-9101-160

Canada

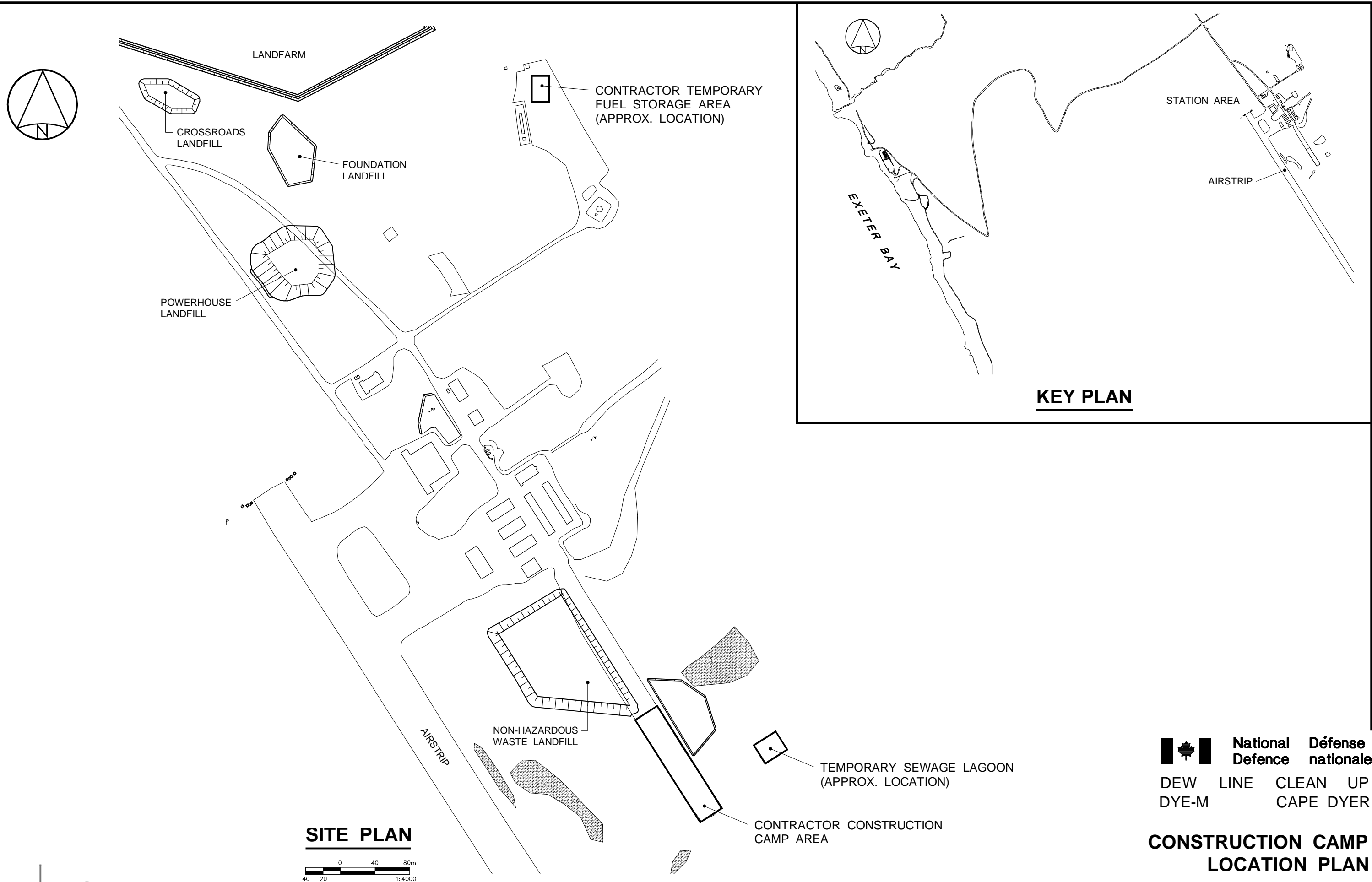


Figure - 1.0