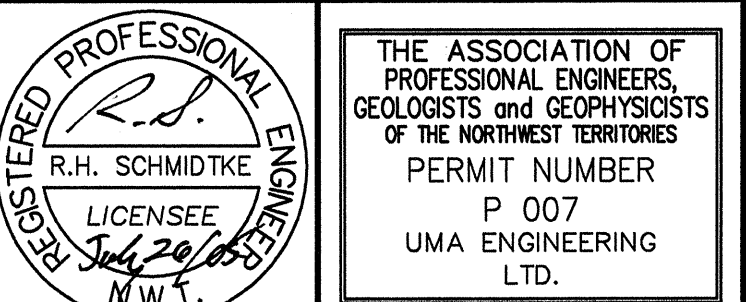


General Notes:

1. ALL DIMENSIONS ARE IN MILLIMETRES UNLESS NOTED OTHERWISE.
2. REFER TO DEMOLITION TABLES IN SPECIFICATIONS FOR LIST OF MAJOR BUILDING CONTENTS.
3. FACILITIES TO BE DEMOLISHED CONTAIN PCB CONTAMINATED PAINT. REFER TO SECTION 02060 OF THE SPECIFICATIONS.
4. FACILITIES TO BE DEMOLISHED CONTAIN ASBESTOS. REFER TO SECTION 02061 OF THE SPECIFICATIONS.
5. INFORMATION SHOWN ON THE DRAWING BASED ON ENGINEERING DESIGN (95% SUBMISSION) DATED OCTOBER, 2001. PREPARED BY SINANNI INC. AND QIKITAALUK CORPORATION, AS PROVIDED BY PWGSC.

Legend:



REVISIONS	DESCRIPTION	DATE
A	detail number	
B	source drawing no.	
C	detail on drawing no.	

project title
**FOX-C Intermediate DEW Line Site
EKALUGAD FIORD
Site Restoration**

Nunavut

drawing title
**WAREHOUSE
FLOOR PLAN, ELEVATION
AND SECTION**

designed by
B. FEDORAK

drawn by
L. VARGAS

approved by
R. SCHMIDTKE

PWGSC Project Manager
B. THOMPSON

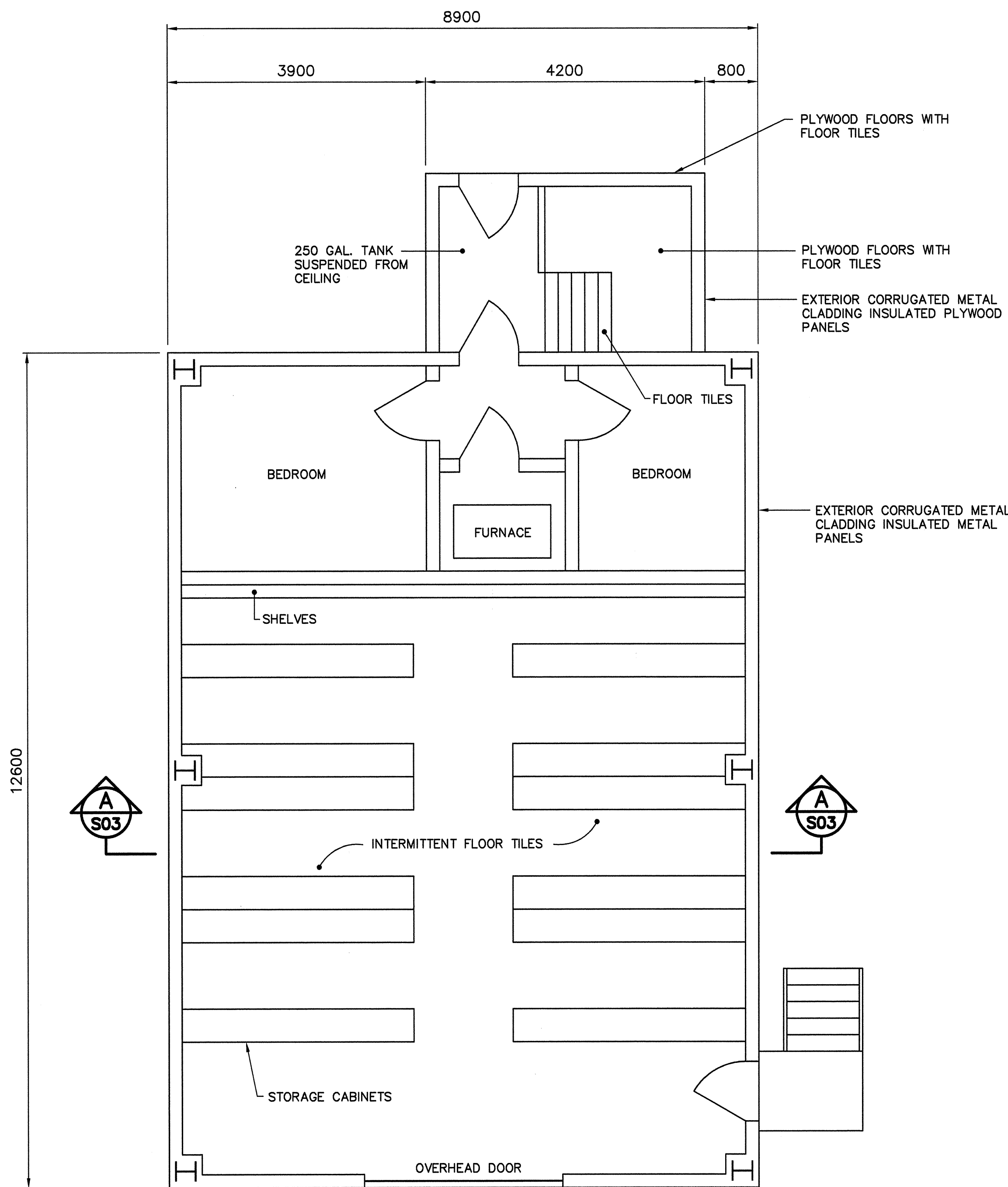
scale
1:50

project no.
413759

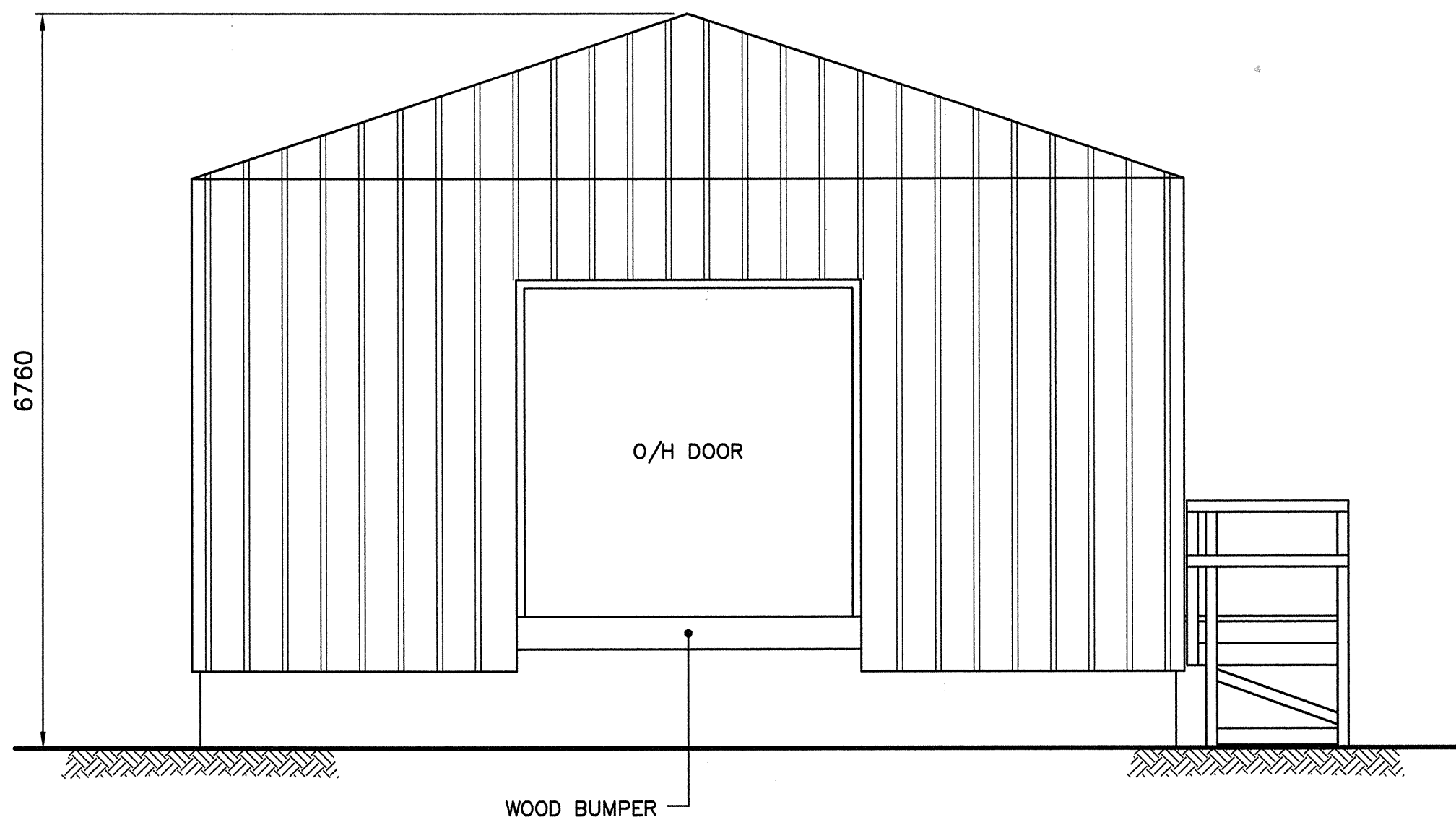
date
FEBRUARY, 2005

S03

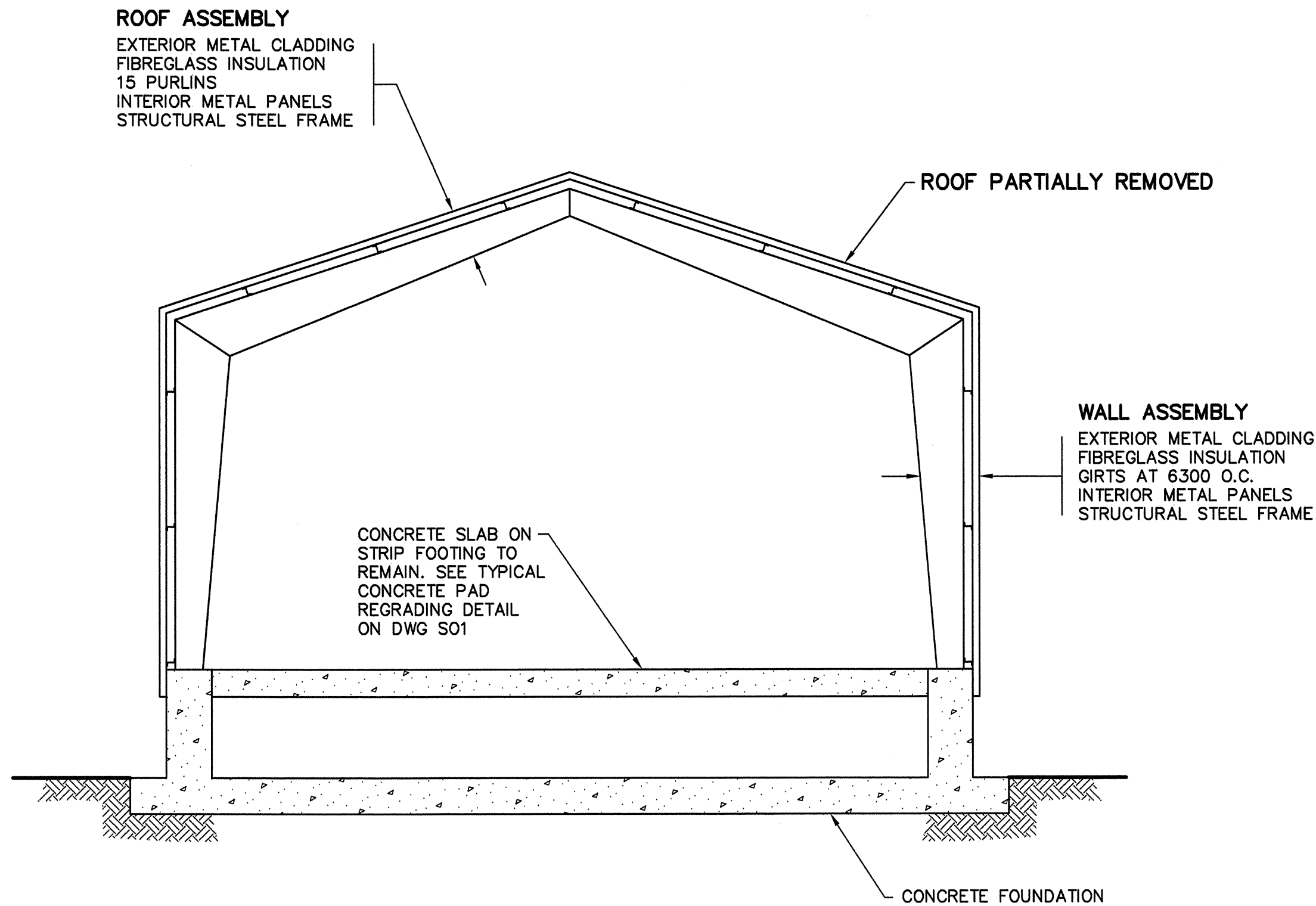
OF 5



FLOOR PLAN



ELEVATION



SECTION

