

---

**APPENDIX H**  
  
**NCS CLASSIFICATION**

---

Site Information: FOX - C DEW Line

Site No.: Not Entered

Custodian Dept.: INAC

Type of Site: Not Entered

Zone:

Location: Ekalguad Fiord, Nunavut

Address: Not Entered

Brief Description of Site:

Abandoned DEW Line Site

Site Name: FOX - C DEW Line

Facility Name: FOX - C DEW Line

UTM Coordinates:

Easting

Nothing

Latitude:

68 deg. 42 min. sec.

Longitude:

68 deg. 33 min. sec.

Legal Land Desc.: Not Entered

Provincial Parcel No.: Not Entered

Province/Territory: N.W. Territories

Site Operator/Mngr.: Not Entered

Site Owner: Not Entered

Site Land Use:

Current: Not Entered

Proposed: Not Entered

Comments:

Not Entered

## Detailed Evaluation: FOX - C DEW Line

### I. Contaminants Characteristics

#### A Degree of Hazard

List possible contaminants and estimated concentrations:

None

Scoring Rationale & Information Source:

None

Score: 11

#### B Contaminant Quantity

Estimated or measured area/volume of contaminated zone:

None

Scoring Rationale & Information Source:

None

Score: 10

#### C Physical State of Contaminants

Does the site contain a) Predominantly liquids/gases, b) Primarily sludges, c) Primarily solids:

None

Scoring Rationale & Information Source:

None

Score: 9

#### Special Considerations

Document any other important contaminant characteristics not addressed above:

None

Scoring Rationale & Information Source:

None

Score: 0

### II. Exposure Pathways

#### A Groundwater

##### 1. Known Contamination of Groundwater at or beyond the Property Boundary

Document information on known groundwater contamination:

None

Scoring Rationale & Information Source:

None

Score: 6

##### 2. Potential for Groundwater Contamination

###### a) Engineered subsurface containment

Document engineered systems protecting groundwater:

None

Scoring Rationale & Information Source:

None

Score: 4

##### 2. Potential for Groundwater Contamination

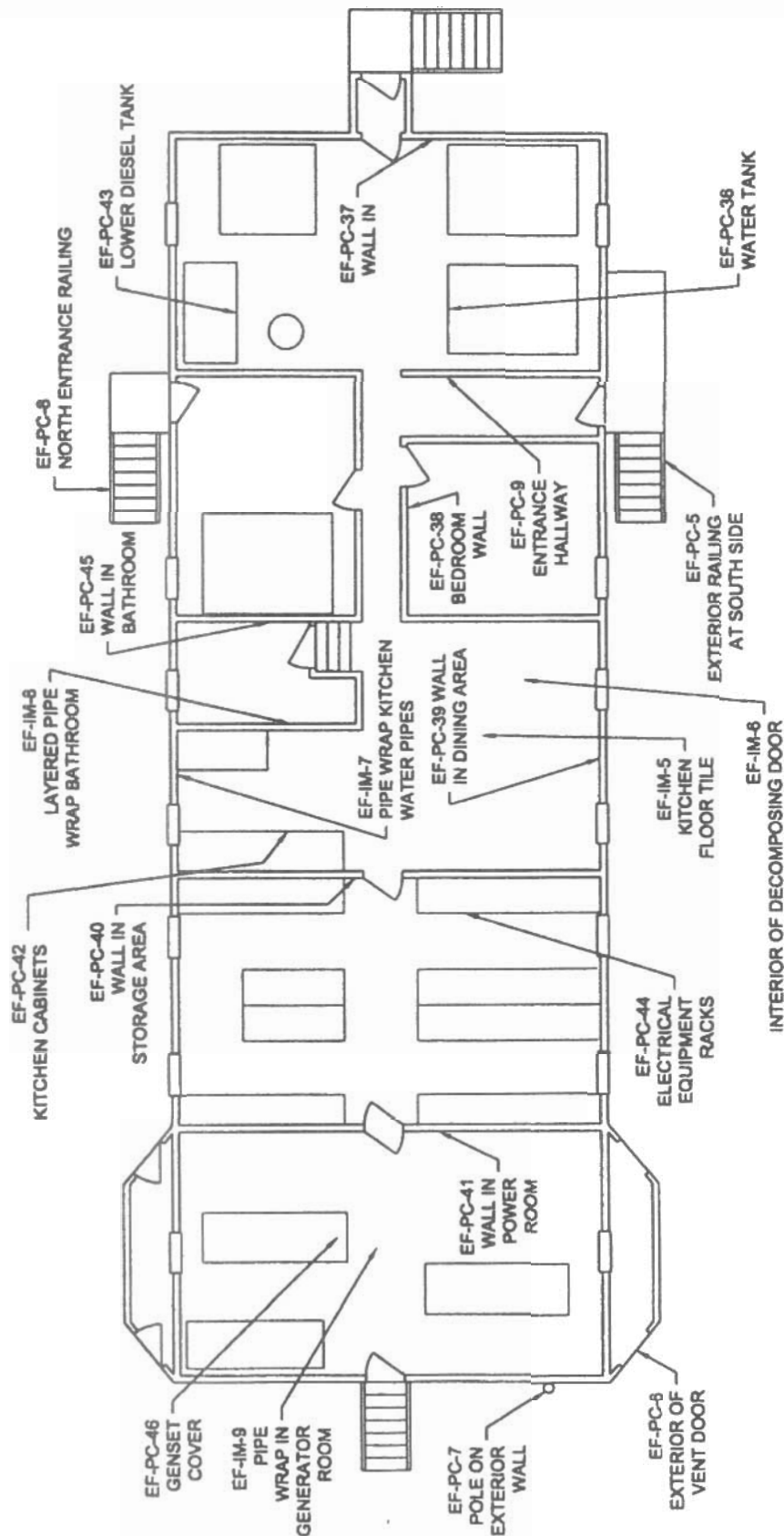
###### b) Thickness of confining layer over aquifer

Document local geological conditions and identify water-bearing zones used for water supply:

None

Scoring Rationale & Information Source:

None



1.0 0.5 0 1.0 2.0 3.0 m

CONTAMINATED SITE OFFICE

Overall Release

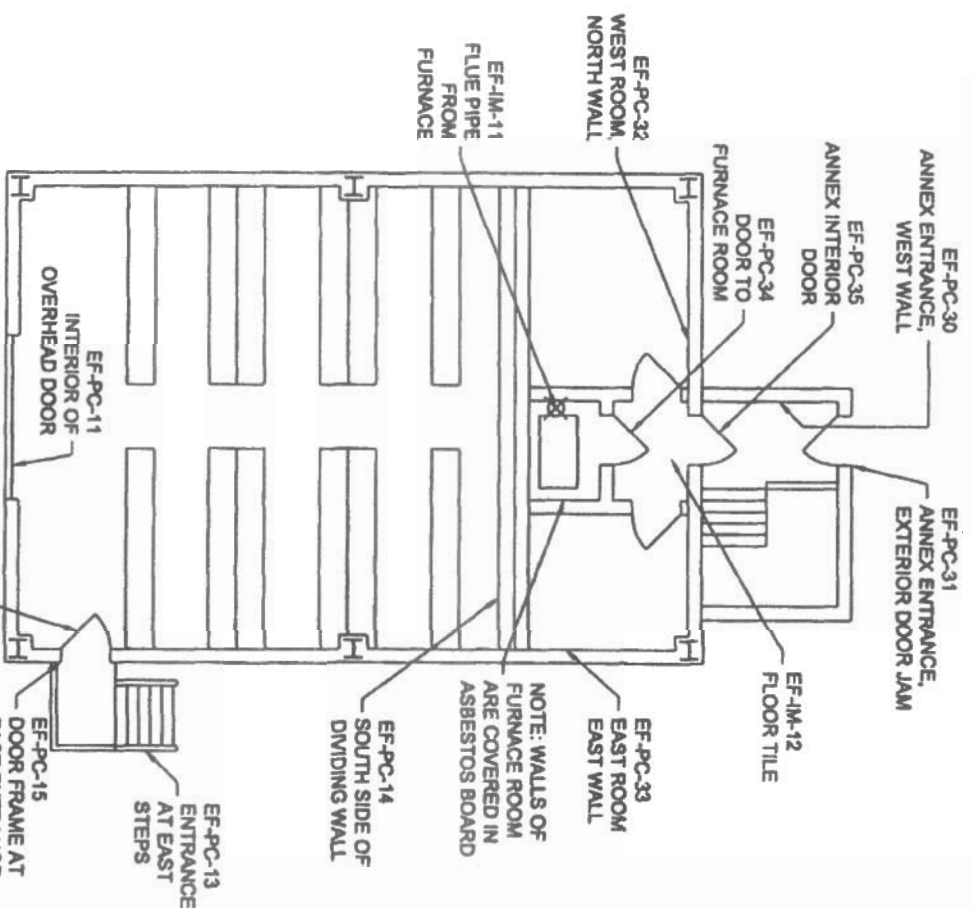
Legend  
PC = PAINT CHIPS  
IM = INSULATING MATERIAL

ORIGITALUK CORPORATION  
SINAHNI INC.

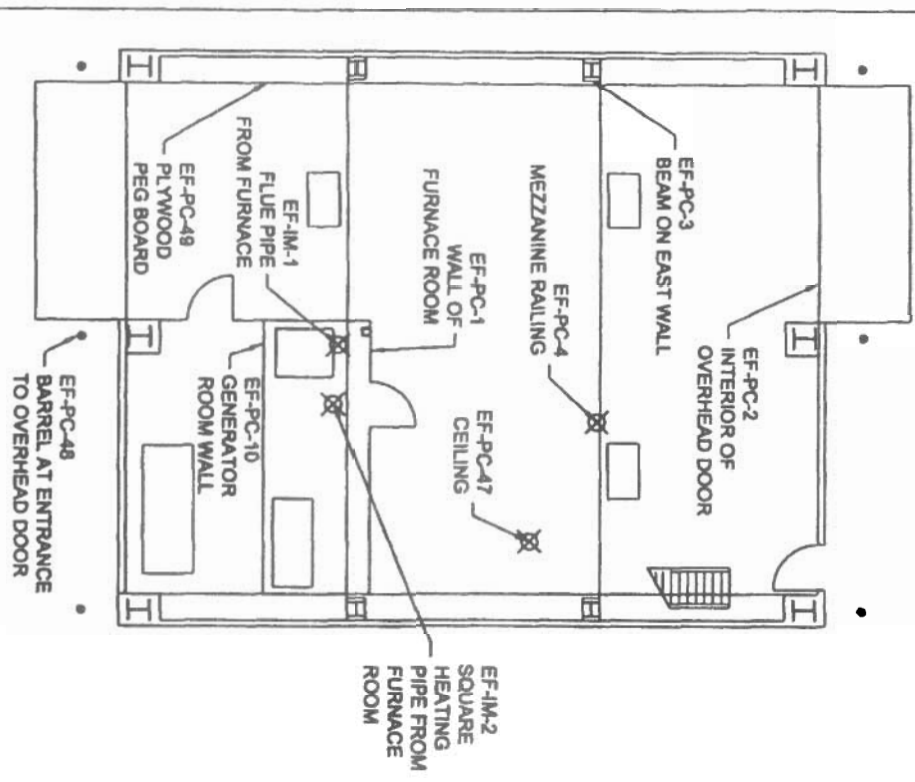
FOR C. BOLLAND / AND  
INTERMEDIATE DEVELOPMENT  
IN THE NORTH OF CANADA 201,  
AS REPRESENTED BY THE DEPARTMENT OF  
HOME AFFAIRS AND NORTHWEST  
DEVELOPMENT

PAINT AND ASBESTOS SAMPLING LOCATION  
CHANCE / HANDBOOK

DATE	BY	REMARKS
1997-08-12	RL	
1997-08-12	JMA/JL	
1997-08-12	P.A.	
1997-08-12		
1997-08-12		



WAREHOUSE



GARAGE

Score: 0

2. Potential for Groundwater Contamination

c) Hydraulic conductivity of the confining layer

Estimate hydraulic conductivity of any confining layer:

None

Scoring Rationale & Information Source:

None

Score: 1

2. Potential for Groundwater Contamination

d) Annual rainfall

Document rainfall data:

None

Scoring Rationale & Information Source:

None

Score: 0.2

2. Potential for Groundwater Contamination

e) Hydraulic conductivity of aquifer(s) of concern

Estimate hydraulic conductivity of relevant aquifer(s):

None

Scoring Rationale & Information Source:

None

Score: 0.5

3. Special Considerations

Document any other important groundwater issues not addressed above:

None

Scoring Rationale & Information Source:

None

Score: 0

**II. Exposure Pathways**

**B Surface Water**

1. Observed or Measured Contamination of Water/Effluent Discharged from Site

Document information on surface water contamination:

None

Scoring Rationale & Information Source:

None

Score: 6

2. Potential for Surface Water Contamination

a) Surface containment

Review and document engineered or natural systems protecting surface water:

None

Scoring Rationale & Information Source:

None

Score: 5

2. Potential for Surface Water Contamination

b) Distance to perennial surface water

Estimate distance from site to nearest stream or other water body:

None

Scoring Rationale & Information Source:

None

Score: 3

2. Potential for Surface Water Contamination

c) Topography

Document terrain conditions and document positions of contaminants (are they above ground or buried?):

None

Scoring Rationale & Information Source:

None

Score: 1.5

2. Potential for Surface Water Contamination

d) Run-off potential

Document geological and rainfall conditions:

None

Scoring Rationale & Information Source:

None

Score: 0.2

2. Potential for Surface Water Contamination

e) Flood potential

Estimate flood frequency of nearby water courses or water bodies:

None

Scoring Rationale & Information Source:

None

Score: 0.3

3. Special Considerations

Document any other important surface water conditions not addressed above:

None

Scoring Rationale & Information Source:

None

Score: 0

II. Exposure Pathways

C Direct Contact

1. Known Contamination of Media Off-site

Document reports of off-site contamination due to contact with contaminated soil, dust, air, etc.:

None

Scoring Rationale & Information Source:

None

Score: 0

2. Potential for Direct Human and/or Animal Contact

a) Airborne Emissions (gases, vapours, contaminated dust, etc.)

Document incidents or complaints about fumes, gases, dust, odours, etc.:

Airbourne release of PCB containing paint

Scoring Rationale & Information Source:

None

Score: 5

2. Potential for Direct Human and/or Animal Contact

b) Accessibility of Site (Ability to Contact Materials)

Review and document avenues of site access by humans and animals:

Remote location however PCB containing paint material is not covered

Scoring Rationale & Information Source:

None

Score: 4

2. Potential for Direct Human and/or Animal Contact

c) Hazardous soil gas migration from the site

Review potential for hazardous soil gas production and migration from site:

None

Scoring Rationale & Information Source:

None

Score: 0

3. Special Considerations

Document any other conditions whereby humans/animals could contact contamination:

None

Scoring Rationale & Information Source:

None

Score: 0

III. Receptors

A Human and Animal Uses

1. Known Impact on Humans or Animals

Record known or suspected adverse effects on humans or domestic animals:

None

Scoring Rationale & Information Source:

None

Score: 0

2. Potential for Impact on Humans or Animals

a) Drinking Water Supply

i) Known impact on drinking water supply

Record known or suspected incidents of contamination of drinking water:

Drinking water (surface water) is not known to be contaminated

Scoring Rationale & Information Source:

None

Score: 0

2. Potential for Impact on Humans or Animals

a) Drinking Water Supply

ii) Potential for impact on drinking water supply

- Proximity to drinking water supply

Identify nearest drinking water well and measure distance to site:

None

Scoring Rationale & Information Source:

None

Score: 5

2. Potential for Impact on Humans or Animals

a) Drinking Water Supply

- ii) Potential for impact on drinking water supply
  - "Availability" of alternate drinking water supply

Document availability of alternate sources of drinking water and ease of implementation:

None

Scoring Rationale & Information Source:

None

Score: 2

2. Potential for Impact on Humans or Animals

b) Other Water Resources

- i) Known impact on water resources

Record information on water resource that is or is potentially affected by site contamination:

None

Scoring Rationale & Information Source:

None

Score: 0

2. Potential for Impact on Humans or Animals

b) Other Water Resources

- ii) Potential for impact on water resources
  - Proximity to water resources used for activities (specified below)

Locate and measure nearest water resource areas to site:

None

Scoring Rationale & Information Source:

None

Score: 2

2. Potential for Impact on Humans or Animals

b) Other Water Resources

- ii) Potential for impact on water resources
  - Use of water resources

Record uses of nearby water resources:

None

Scoring Rationale & Information Source:

None

Score: 1

2. Potential for Impact on Humans or Animals

c) Direct Human Exposure

- i) Known contamination of land used by humans

Record land use type (current or proposed) and level of contamination for land known to be contaminated due to site:

None

Scoring Rationale & Information Source:

None

Score: 0

2. Potential for Impact on Humans or Animals

c) Direct Human Exposure

- ii) Potential human exposure through land use
  - Use of land at and around site

Document land uses (current and proposed) for up to five kilometers from the site:

Residential (fishing/hunting)

Scoring Rationale & Information Source:

None

Score: 5

3. Special Considerations

Document any other important human or animal use information, including details of air contamination if known:

None

Scoring Rationale & Information Source:

None

Score: 0

III. Receptors

B Environmental Receptors

1. Known Adverse Impact on the Environment as a Result of the Contaminated Site

Record known impact(s) on any sensitive biological environment at and/or around the site:

None

Scoring Rationale & Information Source:

None

Score: 0

2. Potential for Impact on Sensitive Environments

a) Distance from the site to the nearest sensitive environment

Document location, distance, type and details of any nearby sensitive environments or habitats:

None

Scoring Rationale & Information Source:

None

Score: 2

2. Potential for Impact on Sensitive Environments

b) Groundwater

Measure distance to major recharge or discharge area:

None

Scoring Rationale & Information Source:

None

Score: 2

3. Special Considerations

Document any other important impacts on the environment not addressed above:

None

Scoring Rationale & Information Source:

None

Score: 0

## Evaluation Totals

	Known:	Estimated:	Combined:
<b>I. Contaminant Characteristics</b>	30	0	30
<b>II. Exposure Pathways</b>			
A. Ground Water	4.7	1	5.7
B. Surface Water	9.7	0.3	10
C. Direct Contact	9.000001	0	9.000001
<b>Section II Totals:</b>	23.4	1.3	24.7
<b>III. Receptors</b>			
A. Human and Animal Uses	15	0	15
B. Environment	4	0	4
<b>Section III Totals:</b>	19	0	19
<b>TOTAL SCORES FOR THIS SITE</b>	<b>72.4</b>	<b>1.3</b>	<b>73.7</b>
<b>CLASSIFICATION:</b>	<b>Class 1</b>		
<b>Risk Potential:</b>	<b>High</b>		
<b>Action Required:</b>	<b>Yes</b>		
<b>Evaluation Last Updated:</b>	<b>Jan-3-2005</b>		

Evaluation Results

Contaminants Characteristics		Known	Estimated	Combined
A. Degree of Hazard		11		
B. Contaminant Quantity		10		
C. Physical State of Contaminants		9		
Special Considerations		0		
Section I Totals:		30		30

II. Exposure Pathways

A. Groundwater

☐ 1. Known Contamination of groundwater at or beyond the property boundary

☒ 2. Potential for Groundwater Contamination

a) Engineered subsurface containment	4	
b) Thickness of confining layer over aquifer	0	
c) Hydraulic conductivity of the confining layer		1
d) Annual Rainfall	0.2	
e) Hydraulic conductivity of aquifer(s) of concern	0.5	
Special Considerations	0	

Next Page

Go to Totals

Back to Questions

Evaluation Results

II. Exposure Pathways		Known	Estimated	Combined
B. Surface Water				
<input type="radio"/>	1. Observed or measured contamination of water/effluent discharged from site	6		
<input checked="" type="radio"/>	2. Potential for surface water contamination			
	a) Surface containment	5		
	b) Distance to perennial surface water	3		
	c) Topography	1.5		
	d) Run-off potential	0.2		
	e) Flood potential		0.3	
	3. Special Considerations	0		
C. Direct Contact				
<input type="radio"/>	1. Known contamination of media off-site	0		
<input checked="" type="radio"/>	2. Potential for direct human and/or animal contact			
	a) Airborne emissions	5		
	b) Accessibility to site	4		
	c) Hazardous soil gas migration from site	0		
	3. Special Considerations	0		
Section II Totals:		23.4	1.3	24.7
<a href="#">Previous Page</a>		<a href="#">Next Page</a>		<a href="#">Go to Totals</a>
				<a href="#">Back to Questions</a>

Evaluation Results

III. Receptors

Known      Estimated      Combined

A. Human and Animal Uses

- ☐ 1. Known impact on humans or animals
- ☒ 2. Potential for impact on humans or animals

a) Drinking water supply

☐ i) Known impact on drinking water

☒ ii) Potential for impact on drinking water

- Proximity to drinking water supply

- 'Availability' of alternate drinking water supply

b) Other water resources

☐ i) Known impact on water resources

☒ ii) Potential for impact on water resources

- Proximity to water resources

- Use of water resources

0

0

5  
2

0

2  
1

Previous Page

Next Page

Go to Totals

Back to Questions

Evaluation Results

III. Receptors		Known	Estimated	Combined
c) Direct human exposure				
<input type="radio"/>	i) Known contamination of land used by humans	0		
<input checked="" type="radio"/>	ii) Potential human exposure through land use			
	- Use of land at and surrounding site	5		
3.	Special Considerations	0		
B. Environmental Receptors				
<input type="radio"/>	1. Known adverse impact on sensitive environments	0		
<input checked="" type="radio"/>	2. Potential for impact on sensitive environments			
	a) Distance from site to the nearest sensitive environment	2		
	b) Groundwater	2		
		0		
3.	Special Considerations			
Section III Totals:		19	0	19

## Evaluation Totals

	Known	Estimated	Combined
I. Contaminant Characteristics	30	0	30
II. Exposure Pathways			
A. Ground Water	4.7	1	5.7
B. Surface Water	9.7	0.3	10
C. Direct Contact	00000	0	00000
Section II Totals:	23.4	1.3	24.7
III. Receptors			
A. Human and Animal Uses	15	0	15
B. Environment	4	0	4
Section III Totals:	19	0	19
TOTAL SCORES FOR THIS SITE	72.4	1.3	73.7

CLASSIFICATION:

Class 1

Risk Potential:

High

Action Required:

Yes

Last Update:

Jan-3-2005

[Previous Page](#)

[Back to Questions](#)

---

**APPENDIX I**  
  
**GENERAL TERMS AND CONDITIONS**

---

The production and use of this Report is conditional upon the following agreement by the Client and Others who may use or rely upon it.

**MANDATE OF EARTH TECH**

This Report has been prepared pursuant to the instructions of the Client, and is subject to the constraints imposed by those instructions. Earth Tech & Partners Ltd. ("Earth Tech") and the Client are aware of these instructions and constraints. Others, who wish to rely upon this Report in any manner, should inquire of the Client for the terms of Earth Tech's mandate in preparing this Report.

**BASIS OF REPORT****2.1 Representations to Earth Tech by Client**

This Report has been prepared for the specific site, development, design objective, and purpose described to Earth Tech by the Client and is specifically based on all of the aforesaid.

Inaccuracies or alterations, of any of the matters upon which this Report is based, will affect the reliability and applicability of this Report.

**2.2 Representations to Earth Tech by Other Persons**

Earth Tech may have relied upon the representations or opinions of persons other than the Client in the course of preparing this Report. Earth Tech may not have checked the accuracy of such representations or opinions except where directed to do so by the Client. The accuracy of these representations and opinions will affect the accuracy of this Report.

**2.3 Time Sensitivity of Report**

The findings expressed in this Report by Earth Tech were valid, in accordance with generally accepted engineering practice and procedures, at the time that they were made. The Client and Others are advised that the conditions upon which such findings were based, and the findings themselves may be subject to change as a result of the passage of time.

**USE OF REPORT BY THE CLIENT**

The Client recognizes that projects involving pollutants and hazardous waste, as defined below, create extraordinary risks. In consideration of the said extraordinary risks and in consideration of Earth Tech providing the services to the Client in connection with the project on which pollutants and hazardous wastes are involved, the Client agrees that Earth Tech's liability to the Client, including liability resulting from claims by Third Parties upon the Client, with respect to any matter in any way arising out of Earth Tech's involvement with pollutants and hazardous wastes associated shall be limited to or otherwise protected as provided in paragraphs (a) and (b) below.

- (a) Earth Tech's liability to the Client in connection with pollutants and hazardous waste is absolutely limited, both in contract and in tort for any and all claims arising out of or in connection with the project to a total maximum aggregate amount not to exceed the cost of reperformance of the services at the sole cost of Earth Tech for that portion of the services proven to be in error.

It is further agreed that such limitation shall be exclusive of the liability of Earth Tech to the Client which may otherwise be provided for in this Agreement for claims unrelated to pollutants and hazardous wastes.

In further consideration of Earth Tech providing the services to the Client in connection with the project in which pollutants and hazardous wastes are involved, the Client agrees that in connection with incidents and claims initiated by Third Parties involving pollutants and hazardous wastes, the Client shall indemnify, defend and hold harmless Earth Tech of and from any and all suits, actions, legal and administrative or arbitration proceedings, claims, demands, damages, penalties, fines, losses, costs and expenses of whatsoever kind or character, arising or alleged to arise out of the services of Earth Tech or any claim against Earth Tech arising or alleged to arise from the acts, omissions or work of others. Such indemnification shall apply to the fullest extent permitted by law,

regardless of fault or breach of contract by Earth Tech and shall include the fees and charges of lawyers in defending or advising Earth Tech as to such claims under the Agreement.

Without limiting the generality of the foregoing, such indemnity extends to claims which arise out of the actual or threatened dispersal, discharge, escape, release or saturation (whether sudden or gradual) of any pollutant to hazardous waste in or into the atmosphere, or on, on to, upon, in or into the surface or subsurface, soils, water or water courses, persons, objects or any other tangible matter.

- (b) Nothing herein shall relieve Earth Tech from their obligations to provide the services required by this Agreement and generally as required by standard engineering practice current as of the date of the performance of the services.
- (c) For all purposes of this statement of limitations, "pollutants and hazardous wastes" shall mean any solid, liquid, gaseous or thermal irritant or contaminant, including without limitation smoke, vapour, soot, fumes, acids, alkalis, chemicals and wastes, including without limitation, pollutants, hazardous or special waste as defined in any federal, provincial or municipal laws.

**4. SUBCONSULTANTS AND SUBCONTRACTORS**

As a result of its mandate, Earth Tech may hire companies or individuals with special expertise or services not available within Earth Tech. These services are for the Client's benefit. The Client agrees to pay for the services of subconsultants and subcontractors. The Client also agrees to indemnify Earth Tech for any damage in any way resulting from the error, omission or negligent act of such subconsultants or subcontractors, including, without limiting the generality of the foregoing, the laboratory testing by subconsultants.

**5. JOB SITE SAFETY**

Earth Tech is only responsible for the activities of its employees on the job site and is not responsible for the supervision of any other persons whatsoever. The presence of Earth Tech personnel on the site shall not be construed in any way to relieve the Client or any other persons on site from their responsibilities for job site safety.

**6. HAZARDOUS CONDITIONS AND EMERGENCY PROCEDURE**

The Client undertakes to inform Earth Tech of all hazardous conditions, or possible hazardous conditions which are known to it. The Client recognizes that the activities of Earth Tech may uncover previously unknown hazardous materials or conditions and that such a discovery may result in the necessity to undertake emergency procedures to protect Earth Tech employees as well as other persons and the environment. These procedures may involve additional costs outside of any budgets previously agreed to. The Client agrees to pay Earth Tech for any expenses incurred as a result of such discoveries and to compensate Earth Tech through payment of additional fees and expenses for time spent by Earth Tech to deal with the consequences of such discoveries.

**7. NOTIFICATION OF AUTHORITIES**

The Client acknowledges that in certain instances the discovery of hazardous substances or conditions and materials may require that government bodies, and other persons, be informed and the client agrees that notification to such bodies or persons as required may be done by Earth Tech in its reasonably exercised discretion.

**8. USE OF REPORT BY OTHERS**

Others wishing to rely upon this Report in any manner may do so only upon condition that such use, and the consequences of such use, are entirely at their own risk and that they understand fully the terms of the Mandate and Basis of this Report.

It is further agreed by such Others that Earth Tech will not be liable to them in any manner including any liability in contract or in tort for any damages whatsoever arising from such use.