

LEGEND: NOTE: FEATURES IN GREY PREDATE THE 2005 FIELD SEASON

CM1 SURVEY CONTROL MONUMENT

LANDFILL BOUNDARIES (APPROXIMATE)

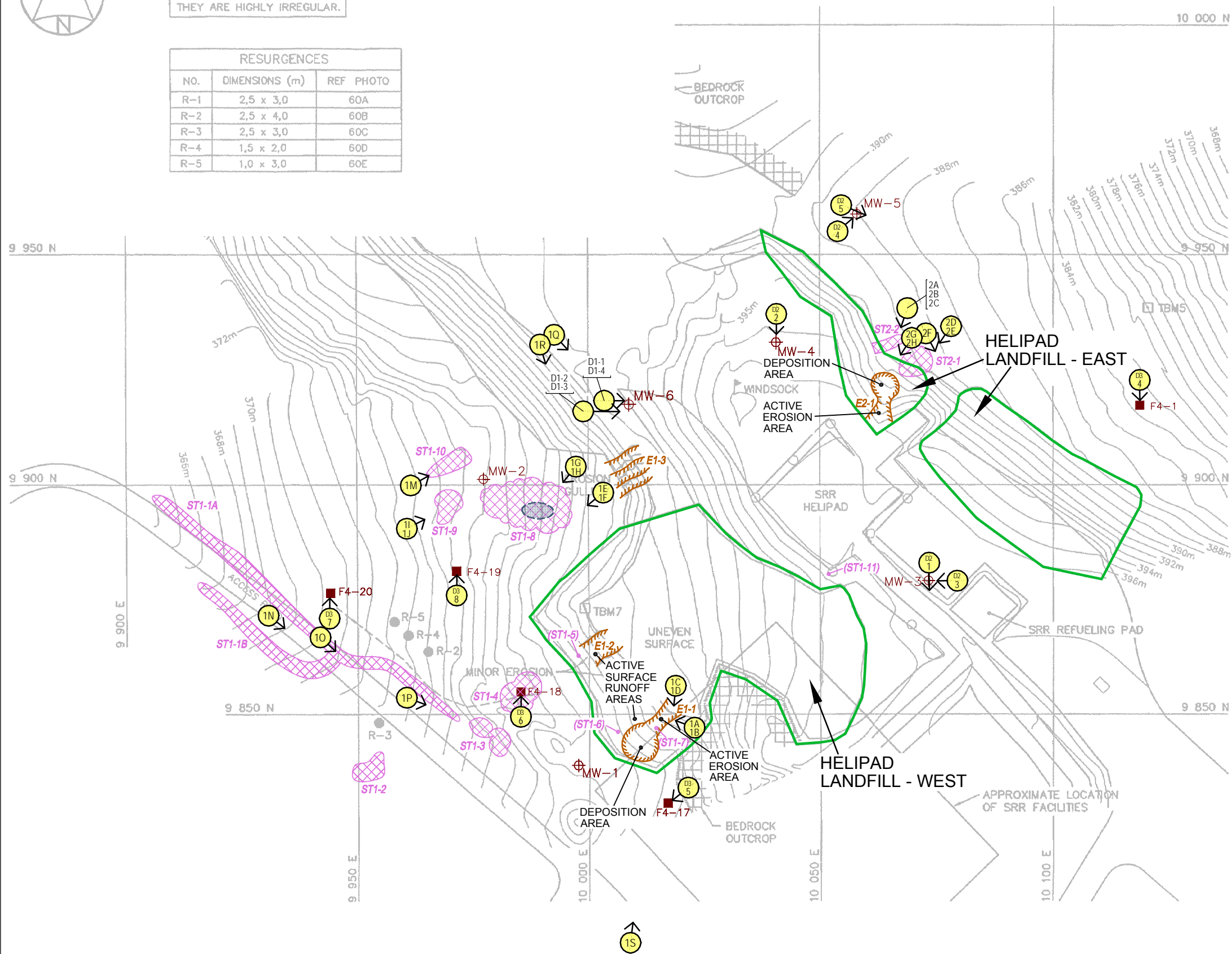
SURVEY CONTROL MONUMENTS				
NO.	COORDINATES		ELEV. (m)	DESCRIPTION
	NORTHING	EASTING		
CM1	10 000.000	10 000.000	397.575	FOX-4 BASELINE STA. 0+00 (LEAD PLUG IN ROCK)

Title: FOX-4 CAPE HOOPER - OVERALL SITE PLAN	
	Project: FOX-4 CAPE HOOPER DEW LINE CLEAN UP LANDFILL MONITORING PLAN
Date: JANUARY 2007	Client: DEFENCE CONSTRUCTION CANADA
SCALE 1:20,000 	
FIGURE 1	



NOTE:
THE RESURGENCES ARE DRAWN
TO APPROXIMATE SHAPES AS
THEY ARE HIGHLY IRREGULAR.

RESURGENCES		
NO.	DIMENSIONS (m)	REF PHOTO
R-1	2,5 x 3,0	60A
R-2	2,5 x 4,0	60B
R-3	2,5 x 3,0	60C
R-4	1,5 x 2,0	60D
R-5	1,0 x 3,0	60E



LEGEND:

NOTE: FEATURES IN GREY PREDATE THE 2005 FIELD SEASON

CM1

TBM5

SURVEY CONTROL MONUMENT

TEMPORARY BENCHMARK

MONITORING WELL LOCATION

SOIL SAMPLE

LANDFILL BOUNDARY (APPROXIMATE)

2006 OBSERVATIONS:

ST1-2

(ST1-6)

D

STAINS

(STAIN ID LABELS IN BRACKETS ARE 2005 OBSERVATIONS REFERRED TO IN THE 2006 TEXT)

DEBRIS

EROSION

POOLING

SINKHOLE

PHOTOGRAPH LOCATION (INDICATING PHOTO NUMBER, LOCATION, VIEWING DIRECTION)

TEMPORARY BENCHMARKS				
NO.	COORDINATES		ELEV. (m)	DESCRIPTION
	NORTHING	EASTING		
5	9 938.442	10 120.491	388.170	CROSS CUT IN ROCK
7	9 873.107	9 999.103	388.170	NAIL

SURVEY CONTROL MONUMENTS				
NO.	COORDINATES		ELEV. (m)	DESCRIPTION
	NORTHING	EASTING		
CM1	10 000.000	10 000.000	397.575	FOX-4 BASELINE STA. 0+00

MONITORING WELLS		
NO.	COORDINATES	
	NORTHING	EASTING
MW-1	9 839.1	9 997.6
MW-2	9 901.6	9 977.5
MW-3	9 878.9	10 074.0
MW-4	9 930.8	10 040.0
MW-5	9 958.9	10 058.0
MW-6	9 917.3	10 008.5

Title: FOX-4 CAPE HOOPER - HELIPAD LANDFILLS - EAST AND WEST

Project: FOX-4 CAPE HOOPER DEW LINE CLEAN UP LANDFILL MONITORING PLAN

Date: JANUARY 2007

Client: DEFENCE CONSTRUCTION CANADA

SCALE 1:335

25 20 15 10 5 0 5 10 15 20 25 metres

FIGURE 2



- LEGEND: NOTE: FEATURES IN GREY PREDATE THE 2005 FIELD SEASON
- CM1 SURVEY CONTROL MONUMENT
 - TBM5 TEMPORARY BENCHMARK
 - MONITORING WELL LOCATION
 - SOIL SAMPLE
 - LANDFILL BOUNDARY (APPROXIMATE)

2006 OBSERVATIONS:

- ST3-1 STAINS
- DEBRIS
- E3-1 EROSION
- POOLING
- SINKHOLE
- PHOTOGRAPH LOCATION (INDICATING PHOTO NUMBER, LOCATION, VIEWING DIRECTION)

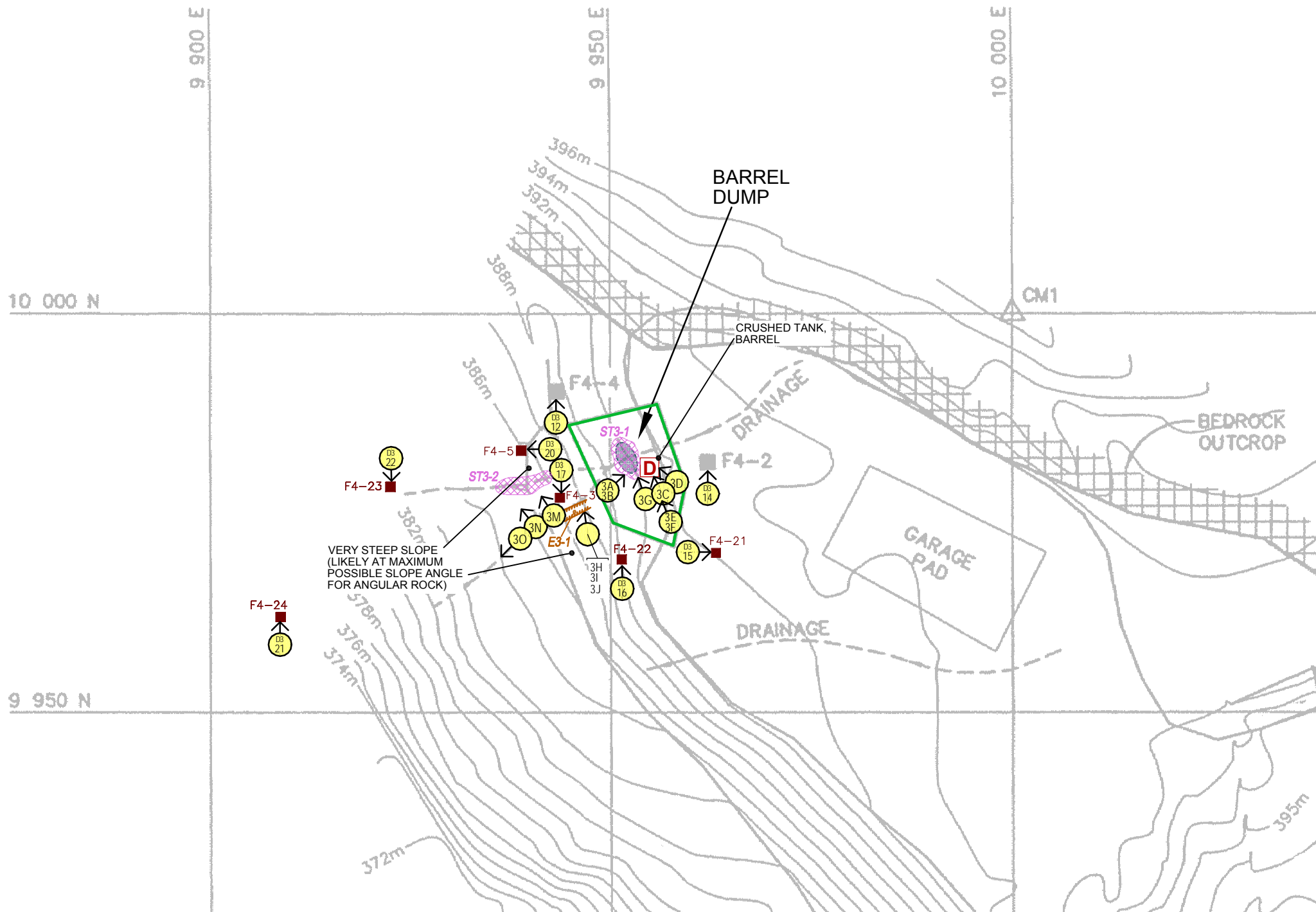
TEMPORARY BENCHMARKS				
NO.	COORDINATES		ELEV. (m)	DESCRIPTION
	NORTHING	EASTING		
5	9 938.442	10 120.491	388.170	CROSS CUT IN ROCK
7	9 873.107	9 999.103	388.170	NAIL

SURVEY CONTROL MONUMENTS				
NO.	COORDINATES		ELEV. (m)	DESCRIPTION
	NORTHING	EASTING		
CM1	10 000.000	10 000.000	397.575	FOX-4 BASELINE STA. 0+00

MONITORING WELLS		
NO.	COORDINATES	
	NORTHING	EASTING
MW-1	9 839.1	9 997.6
MW-2	9 901.6	9 977.5
MW-3	9 878.9	10 074.0
MW-4	9 930.8	10 040.0
MW-5	9 958.9	10 058.0
MW-6	9 917.3	10 008.5

NOTE:
THE RESURGENCES ARE DRAWN TO APPROXIMATE SHAPES AS THEY ARE HIGHLY IRREGULAR.

RESURGENCES		
NO.	DIMENSIONS (m)	REF PHOTO
R-1	2,5 x 3,0	60A
R-2	2,5 x 4,0	60B
R-3	2,5 x 3,0	60C
R-4	1,5 x 2,0	60D
R-5	1,0 x 3,0	60E



Title: FOX-4 CAPE HOOPER - BARREL DUMP LANDFILL

Project: FOX-4 CAPE HOOPER DEW LINE CLEAN UP LANDFILL MONITORING PLAN

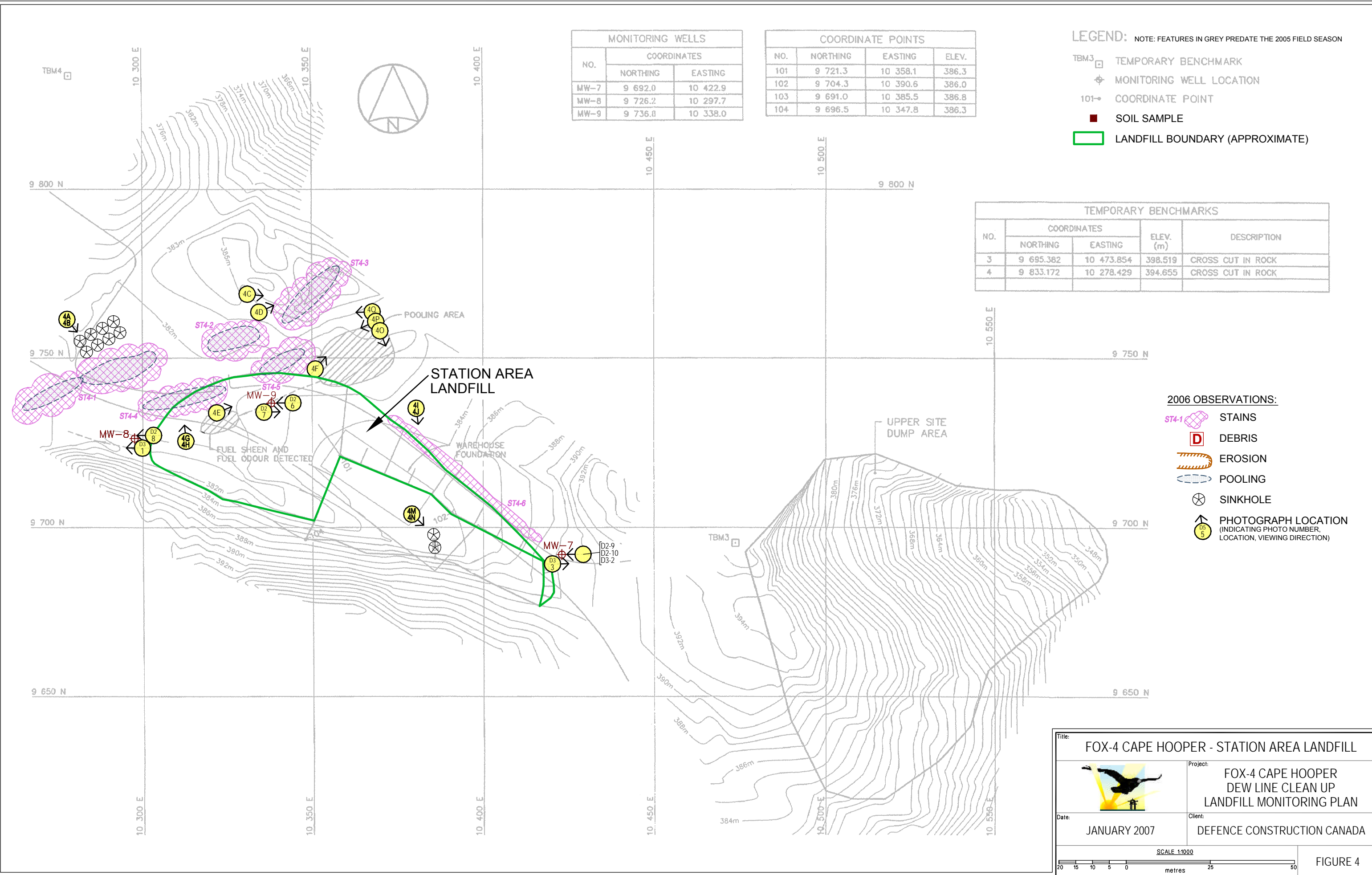
Date: JANUARY 2007

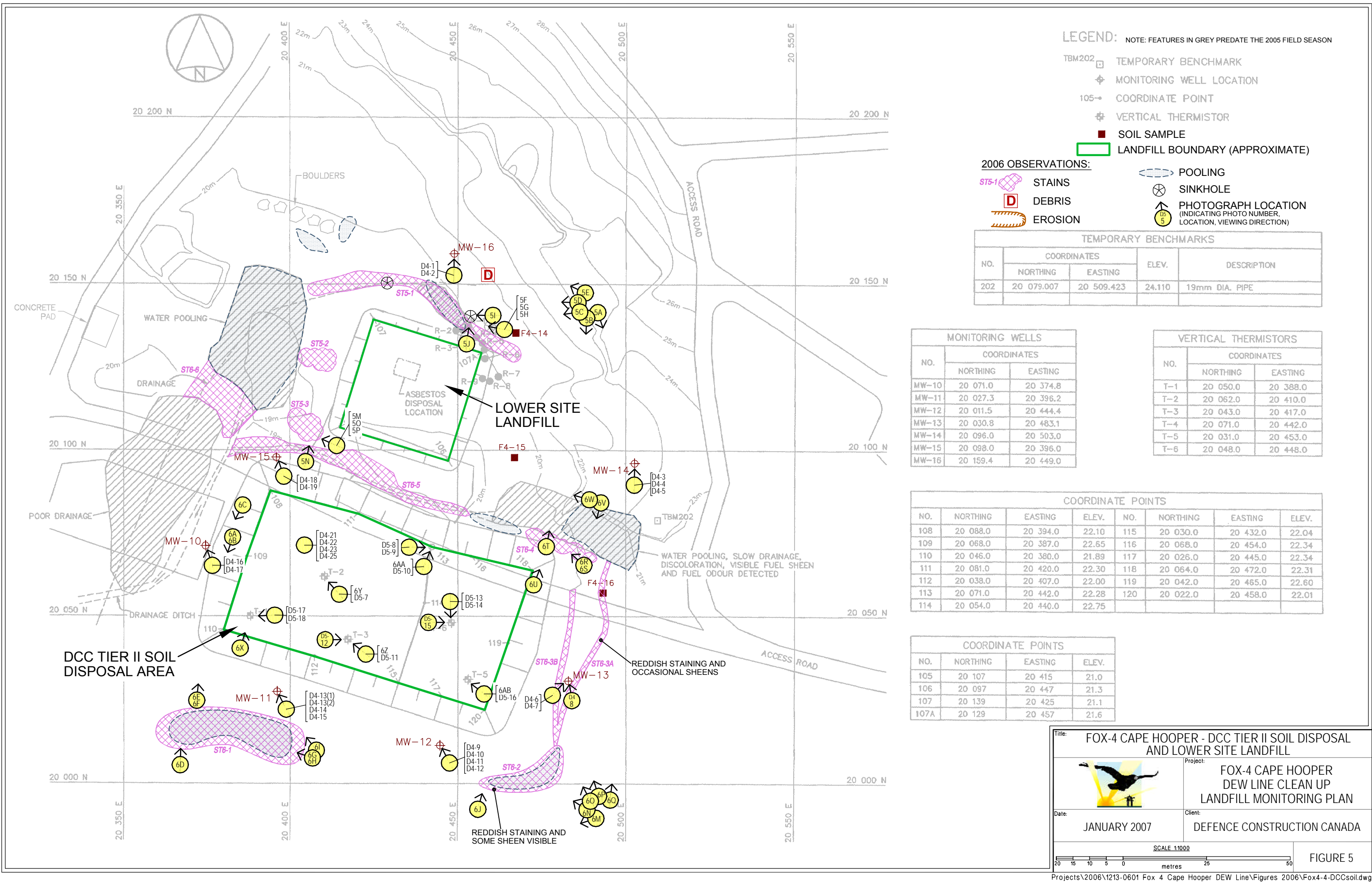
Client: DEFENCE CONSTRUCTION CANADA

SCALE 1:600

10 5 0 10 20 30 metres

FIGURE 3





LEGEND: NOTE: FEATURES IN GREY PREDATE THE 2005 FIELD SEASON

- TBM202 □ TEMPORARY BENCHMARK
- ⊕ MONITORING WELL LOCATION
- 105→ COORDINATE POINT
- ⊕ VERTICAL THERMISTOR
- SOIL SAMPLE
- LANDFILL BOUNDARY (APPROXIMATE)

- 2006 OBSERVATIONS:
- STAINS
 - DEBRIS
 - EROSION
 - POOLING
 - SINKHOLE
 - PHOTOGRAPH LOCATION (INDICATING PHOTO NUMBER, LOCATION, VIEWING DIRECTION)

TEMPORARY BENCHMARKS				
NO.	COORDINATES		ELEV.	DESCRIPTION
	NORTHING	EASTING		
202	20 079.007	20 509.423	24.110	19mm DIA. PIPE

MONITORING WELLS			
NO.	COORDINATES		
	NORTHING	EASTING	
MW-10	20 071.0	20 374.8	
MW-11	20 027.3	20 396.2	
MW-12	20 011.5	20 444.4	
MW-13	20 030.8	20 483.1	
MW-14	20 096.0	20 503.0	
MW-15	20 098.0	20 396.0	
MW-16	20 159.4	20 449.0	

VERTICAL THERMISTORS		
NO.	COORDINATES	
	NORTHING	EASTING
T-1	20 050.0	20 388.0
T-2	20 062.0	20 410.0
T-3	20 043.0	20 417.0
T-4	20 071.0	20 442.0
T-5	20 031.0	20 453.0
T-6	20 048.0	20 448.0

COORDINATE POINTS							
NO.	NORTHING	EASTING	ELEV.	NO.	NORTHING	EASTING	ELEV.
108	20 088.0	20 394.0	22.10	115	20 030.0	20 432.0	22.04
109	20 068.0	20 387.0	22.65	116	20 068.0	20 454.0	22.34
110	20 046.0	20 380.0	21.89	117	20 026.0	20 445.0	22.34
111	20 081.0	20 420.0	22.30	118	20 064.0	20 472.0	22.31
112	20 038.0	20 407.0	22.00	119	20 042.0	20 465.0	22.60
113	20 071.0	20 442.0	22.28	120	20 022.0	20 458.0	22.01
114	20 054.0	20 440.0	22.75				

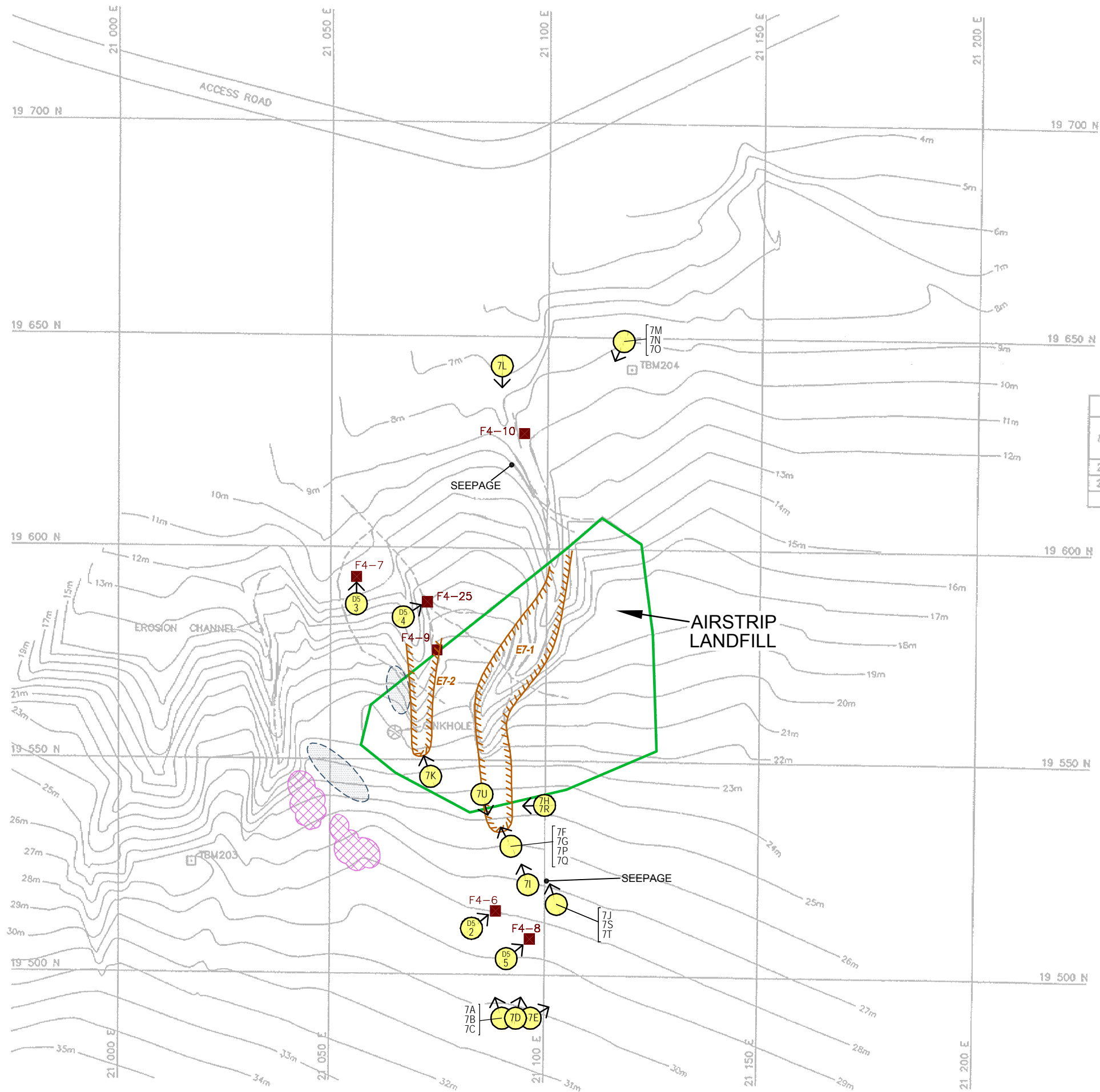
COORDINATE POINTS			
NO.	NORTHING	EASTING	ELEV.
105	20 107	20 415	21.0
106	20 097	20 447	21.3
107	20 139	20 425	21.1
107A	20 129	20 457	21.6

Title: FOX-4 CAPE HOOPER - DCC TIER II SOIL DISPOSAL AND LOWER SITE LANDFILL

Date: JANUARY 2007

Project: FOX-4 CAPE HOOPER DEW LINE CLEAN UP LANDFILL MONITORING PLAN

Client: DEFENCE CONSTRUCTION CANADA



LEGEND: NOTE: FEATURES IN GREY PREDATE THE 2005 FIELD SEASON

TBM203 TEMPORARY BENCHMARK

SOIL SAMPLE

LANDFILL BOUNDARY (APPROXIMATE)

2006 OBSERVATIONS:

STAINS

DEBRIS

EROSION


POOLING

SINKHOLE

PHOTOGRAPH LOCATION
(INDICATING PHOTO NUMBER, LOCATION, VIEWING DIRECTION)

TEMPORARY BENCHMARKS				
NO.	COORDINATES		ELEV. (m)	DESCRIPTION
	NORTHING	EASTING		
203	19 525.545	21 017.155	28.241	19mm D/A. PIPE/STONE CAIRN
204	19 642.453	21 119.703	10.019	19mm D/A. PIPE/STONE CAIRN

Title: FOX-4 CAPE HOOPER - AIRSTRIP LANDFILL



Date: JANUARY 2007

Project: FOX-4 CAPE HOOPER
DEW LINE CLEAN UP
LANDFILL MONITORING PLAN

Client: DEFENCE CONSTRUCTION CANADA

SCALE 1:1000


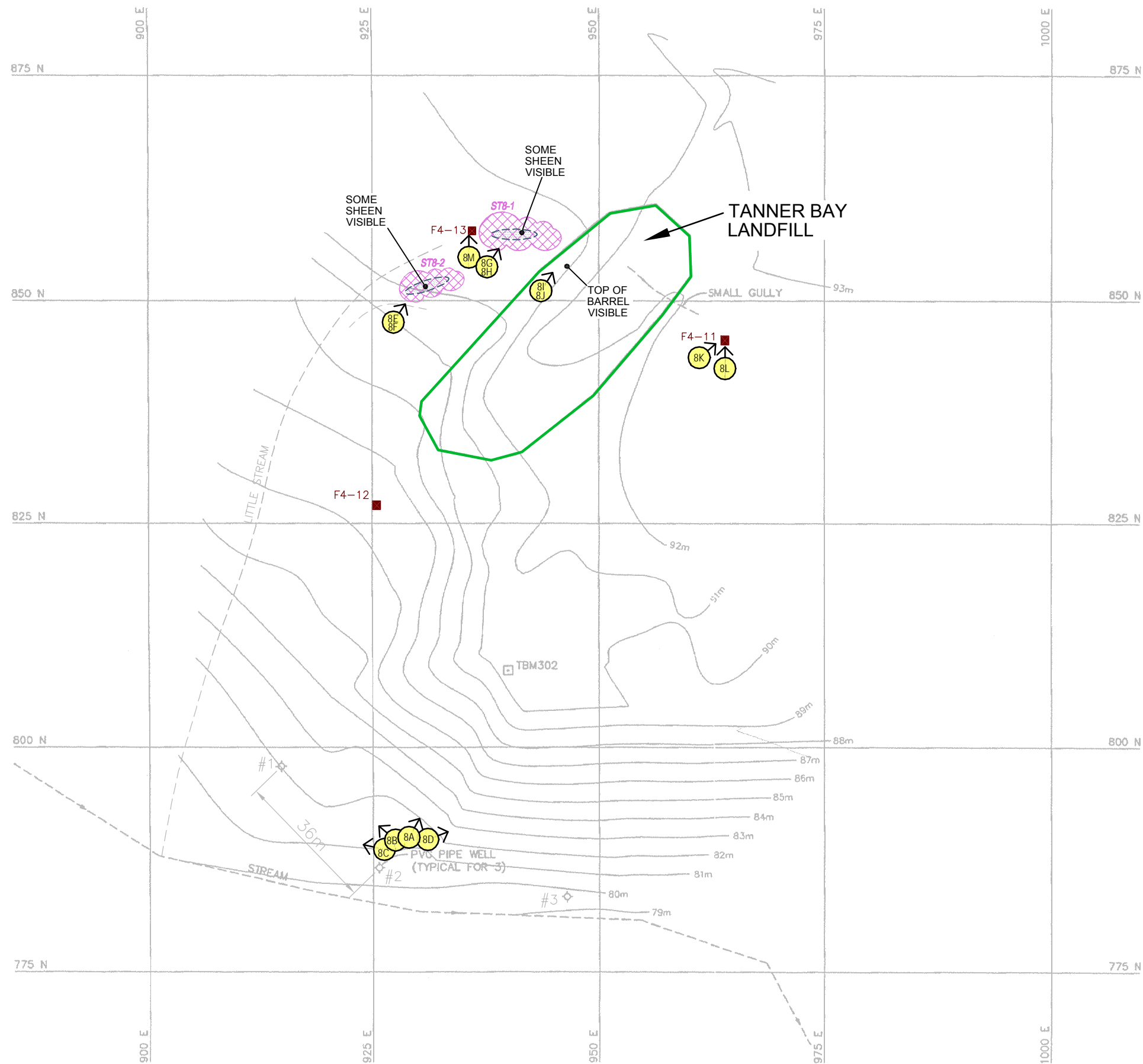


FIGURE 12



LEGEND: NOTE: FEATURES IN GREY PREDATE THE 2005 FIELD SEASON

TBM302 TEMPORARY BENCHMARK

SOIL SAMPLE

LANDFILL BOUNDARY (APPROXIMATE)

2006 OBSERVATIONS:

ST8-1 STAINS

DEBRIS

EROSION

POOLING

SINKHOLE

PHOTOGRAPH LOCATION
(INDICATING PHOTO NUMBER, LOCATION, VIEWING DIRECTION)

TEMPORARY BENCHMARKS				
NO.	COORDINATES		ELEV.	DESCRIPTION
	NORTHING	EASTING		
302	808.603	939.857	90.944	19mm DIA. PIPE/STONE CAIRN

Title: FOX-4 CAPE HOOPER - TANNER BAY LANDFILL	
	Project: FOX-4 CAPE HOOPER DEW LINE CLEAN UP LANDFILL MONITORING PLAN
Date: JANUARY 2007	Client: DEFENCE CONSTRUCTION CANADA
SCALE 1:1000	

FIGURE 13