

Amy Dumoulin-Jeromel
The Royal Military College of Canada
PO Box 17000 Stn. Forces
Kingston, ON K7K 7B4



Eva Schulz
Environmental Scientist
UMA Engineering Ltd.
2540 Kensington Road NW
Calgary, AB T2N 3S3

Friday August 8, 2003

RE: July 2003 Monthly Report for Water Use License Number: NWB5FRA0209

Dear Eva:

The following results of the Surveillance Network Program (SNP) and/or Water Use License are provided by the Environmental Sciences Group to meet the requirements of the above-noted license for *PIN-3 (Lady Franklin Point)*.

1. SEWAGE EFFLUENT

There is *one* sewage lagoon in use at PIN-3. The Water Use License and SNP require that samples from treated sewage lagoon effluent at the point of discharge to the receiving water be collected prior to each discharge event. No sewage lagoon samples were collected during the month of July 2003. Photographs of the camp sewage lagoon are provided in Appendix B.

2. WASTE WATER

The SNP requires that all wash water and water collected from the dewatering of contaminated soil areas be analyzed prior to disposal to the environment for the effluent parameters listed below. The following wastewater samples were collected at PIN-3 during the month of July 2003:

Sample Number	Sample Location	GPS Coordinates	Sampling Date
03-07243	DEW Line Sewage Outfall	(none submitted)	6 July 2003
03-07255	West Module Train Holding Pond -- north section	12409012 E 7598256 N	8 July 2003
03-07256	West Module Train Holding Pond- south section	12409012 E 7598256 N	8 July 2003
03-07259	East Module Train Holding Pond- north section	12409240 E 7598259 N	10 July 2003
03-07260	East Module Train Holding Pond- south section	12409240 E 7598259 N	10 July 2003
03-07261	East Module Train Holding Pond- south section	12409240 E 7598259 N	10 July 2003

These samples were collected to determine if it could be discharged to the surrounding land. A summary of the results for the parameters tested is provided below. Laboratory results and photographs are provided in Appendices A and B, respectively.

LOCATION: DEW LINE SEWAGE OUTFALL

GPS COORDINATES: (NOT PROVIDED)

Parameter	Units	MAC ¹	03-07243 (6 July 2003)
pH	pH units	6.0-9.0	7.21
Oil & Grease	-	No visible sheen	None visible
Total Arsenic	mg/L	0.1	0.004
Dissolved Cadmium	mg/L	0.01	<0.001
Total Chromium	mg/L	0.1	<0.005
Dissolved Cobalt	mg/L	0.05	<0.003
Dissolved Copper	mg/L	0.2	0.005
Dissolved Lead	mg/L	0.05	<0.010
Total Mercury	ug/L	0.6	<0.4
Dissolved Nickel	mg/L	0.2	<0.005
Total Zinc	mg/L	1.0	0.036
PCBs	ug/L	50* or 5**	<3.0
Phenols	ug/L	20	<1.0

¹Maximum Average Concentration

*When discharging the water to barren land.

**When discharging the water to vegetated land.

LOCATION: WEST MODULE TRAIN HOLDING POND

GPS COORDINATES: 12409012 E, 7598256 N

Parameter	Units	MAC ¹	03-07255 (8 July 2003)	03-07256 (8 July 2003)
pH	pH units	6.0-9.0	7.48	7.25
Oil & Grease	-	No visible sheen	None visible	None visible
Total Arsenic	mg/L	0.1	<0.003	<0.003
Dissolved Cadmium	mg/L	0.01	<0.001	<0.001
Total Chromium	mg/L	0.1	<0.005	<0.005
Dissolved Cobalt	mg/L	0.05	<0.003	<0.003
Dissolved Copper	mg/L	0.2	0.005	<0.005
Dissolved Lead	mg/L	0.05	<0.010	<0.010
Total Mercury	ug/L	0.6	<0.4	<0.4
Dissolved Nickel	mg/L	0.2	<0.005	<0.005
Total Zinc	mg/L	1.0	0.014	<0.010
PCBs	ug/L	50* or 5**	<3.0	<3.0
Phenols	ug/L	20	<1.0	<1.0

¹Maximum Average Concentration

*When discharging the water to barren land.

**When discharging the water to vegetated land.

LOCATION: EAST MODULE TRAIN HOLDING POND

GPS COORDINATES: 12409240 E, 7598259 N

Parameter	Units	MAC ¹	03-07259 (10 Jul 03)	03-07260 ² (10 Jul 03)	03-07261 ² (10 Jul 03)
pH	pH units	6.0-9.0	7.48	7.92	8.01
Oil & Grease	-	No visible sheen	None visible	None visible	None visible
Total Arsenic	mg/L	0.1	<0.003	<0.003	<0.003
Dissolved Cadmium	mg/L	0.01	<0.001	<0.001	<0.001
Total Chromium	mg/L	0.1	<0.005	<0.005	<0.005
Dissolved Cobalt	mg/L	0.05	<0.003	<0.003	<0.003
Dissolved Copper	mg/L	0.2	0.007	0.006	0.008
Dissolved Lead	mg/L	0.05	<0.010	<0.010	<0.010
Total Mercury	ug/L	0.6	<0.4	<0.4	<0.4
Dissolved Nickel	mg/L	0.2	<0.005	<0.005	<0.005
Total Zinc	mg/L	1.0	0.025	<0.010	0.010
PCBs	ug/L	50* or 5**	<3.0	<3.0	<3.0
Phenols	ug/L	20	<1.0	<1.0	<1.0

¹Maximum Average Concentration²Samples 03-07260/07261 are a field duplicate pair. They were collected at the same location at the same time as part of ESG's internal QA/QC program.

*When discharging the water to barren land.

**When discharging the water to vegetated land.

3. QUALITY ASSURANCE AND QUALITY CONTROL (QA/QC) SAMPLES

The following samples were collected and analyzed as part of the QA/QC program for PIN-3 during the month of July 2003:

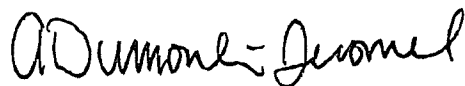
Sample Number	Sample Location	GPS Coordinates	Sampling Date
03-07257	Field Blank	(Not applicable)	8 July 2003
03-07258	Travel Blank	(Not applicable)	8 July 2003

Details on the specific types of QA/QC samples are included in the site-specific QA/QC plan that has been submitted to the Nunavut Water Board as required by the Water Use License.

Parameter	Units	Detection Limit	Field Blank 03-07257 (8 Jul 03)	Travel Blank 03-07258 (8 Jul 03)
PH	pH units	-	6.59	5.40
Oil & Grease	mg/L	1.0	<1.0	1.0
Total Arsenic	mg/L	0.003	<0.003	<0.003
Dissolved Cadmium	mg/L	0.001	<0.001	<0.001
Total Chromium	mg/L	0.005	<0.005	<0.005
Dissolved Cobalt	mg/L	0.003	<0.003	<0.003
Dissolved Copper	mg/L	0.005	<0.005	<0.005
Dissolved Lead	mg/L	0.010	<0.010	<0.010
Total Mercury	ug/L	0.4	<0.4	<0.4
Dissolved Nickel	mg/L	0.005	<0.005	<0.005
Total Zinc	mg/L	0.010	<0.010	<0.010
PCBs	ug/L	3.0	<3.0	<3.0
Phenols	ug/L	1.0	<1.0	<1.0

We trust that the information provided meets current requirements. Please contact the undersigned if you have any questions or concerns.

Sincerely,



ENVIRONMENTAL SCIENCES GROUP

APPENDIX A LABORATORY RESULTS

Notes:

1. Sample 03-07243 was collected from standing water contained within the DEW Line Sewage Outfall on 6 July 2003.
2. Samples 03-07255 and 03-07256 were collected from the northern and southern sections of the West Module Train Holding Pond on 8 July 2003.
3. Sample 03-07257 is a field blank that was filled on 8 July 2003.
4. Sample 03-07258 is a travel blank.
5. Samples 03-07259 and 03-07260/61 (a field duplicate pair) were collected from the northern and southern sections of the East Module Train Holding Pond on 10 July 2003.



RMC: ANALYTICAL SERVICES GROUP • GROUPE DES SERVICES ANALYTIQUES CMR

Royal Military College, Dept. Of Chem. and Chem. Eng., P.O. Box 17000 Stn. Forces, Kingston, ON, K7K 7B4
(613) 541-6000 ext 6684 / Fax: (613) 545-8341

Client: **ESG**
12 Verite Ave
Dept. of Chem. / Chem. Eng., RMC
P.O. Box 17000, Stn. Forces
Kingston, Ontario K7K 7B4
(613) 541-6000 ext 6567
Fax: (613) 541-6596

ASG Login No: 9485
Site: Pin-3
Client No: 03-029
Samples Received: 15-Jul-03
Date of analysis: 16-Jul-03
Method No: ASG 037
Date Reported: 16-Jul-07
Page: 1 of 1

RESULTS OF pH ANALYSIS

Sample I.D.	pH
03-07243*	7.21
03-07255	7.48
03-07256	7.25
03-07257	6.59
03-07258	5.40
03-07259	7.48
03-07260	7.92
03-07261	8.01

* Averaged result of duplicates

LABORATORY QA/QC

Sample I.D.	pH
03-07243; Duplicate	7.18, 7.23
control	4.01
control target	4.00

The results reported here relate only to the items tested.

Prepared By: _____
Ivina Velazco, AnalystAuthorization: _____
Cindy Cowin, Laboratory Manager

ASU #	6269		Report ID:	PIN-3W3		
Client:	ASG 9485		Date Submitted:	15-Jul-03		
			Date:	17-Jul-03		
Site:	PIN-3		Matrix:	Water		
	03-029					
Preliminary Report of Analysis						
SAMPLE	Oil & Grease	*Phenols				
	mg/L	ug/L				
03-07243	3.5	<1.0				
03-07255	<1.0	<1.0				
03-07256	<1.0	<1.0				
03-07257	1.1	<1.0				
**03-07258	1.0	result to follow				
03-07259	<1.0	<1.0				
03-07260	1.5	<1.0				
03-07261	2.3	<1.0				
Blank	<1.0	<1.0				
Control	15.6	11.8				
Control Target	15.6	10.0				
Date Tested	16-Jul-03	16-Jul-03				
* Samples run in duplicate and results averaged						
**Non-conformance due to insufficient sample volume						

ASU #	6269	Report ID:	PIN-3W5
Client:	ASG 9485	Date Submitted:	15-Jul-03
		Date:	18-Jul-03
Site:	PIN-3	Matrix:	Water
	03-029		
Preliminary Report of Analysis			
SAMPLE	*Phenols		
	ug/L		
03-07258	<1.0		
Blank	<1.0		
Control	10.6		
Control Target	10.0		
Date Tested	18-Jul-03		
* Samples run in duplicate and results averaged			

ASU #	6269	Report ID:	PIN-3 W4		
Client:	ASG 9485	Date submitte	15-Jul-03		
		Date tested	17-Jul-03		
Site:	PIN-3	Date	18-Jul-03		
ESG#:	03-029	Matrix	Water		
Preliminary Report of Analysis		All result are in mg/L			
Total Metals					
	Zn	Cr	As		
03-07243	0.036	<0.005	0.004		
03-07255	0.014	<0.005	<0.003		
03-07256	<0.010	<0.005	<0.003		
03-07259	0.025	<0.005	<0.003		
03-07260	<0.010	<0.005	<0.003		
03-07261	0.010	<0.005	<0.003		
Blank	<0.010	<0.005	<0.003		
Control	1.24	0.39	1.25		
Control Target	1.20	0.40	1.20		
Dissolved Metals					
	Cu	Ni	Co	Cd	Pb
03-07243	0.005	<0.005	<0.003	<0.001	<0.010
03-07255	0.005	<0.005	<0.003	<0.001	<0.010
03-07256	<0.005	<0.005	<0.003	<0.001	<0.010
03-07259	0.007	<0.005	<0.003	<0.001	<0.010
03-07260	0.006	<0.005	<0.003	<0.001	<0.010
03-07261	0.008	<0.005	<0.003	<0.001	<0.010
Blank	<0.005	<0.005	<0.003	<0.001	<0.010
Control	2.15	2.20	2.06	0.39	2.18
Control Target	2.20	2.20	2.20	0.40	2.20

ASU #	6269		Report ID:	PIN-3 W6	
Client:	ASG 9485		Date submitte	15-Jul-03	
			Date tested	21-Jul-03	
Site:	PIN-3		Date	23-Jul-03	
ESG#:	03-029		Matrix	Water	
Preliminary Report of Analysis			All result are in mg/L		
Total Metals					
	Zn	Cr	As		
03-07257	<0.010	<0.005	<0.003		
03-07258	<0.010	<0.005	<0.003		
Blank	<0.010	<0.005	<0.003		
Control	1.28	0.39	1.20		
Control Target	1.20	0.40	1.20		
Dissolved Metals					
	Cu	Ni	Co	Cd	Pb
03-07257	<0.005	<0.005	<0.003	<0.001	<0.010
03-07258	<0.005	<0.005	<0.003	<0.001	<0.010
Blank	<0.005	<0.005	<0.003	<0.001	<0.010
Control	2.13	2.25	2.08	0.40	2.22
Control Target	2.20	2.20	2.20	0.40	2.20



RMC ANALYTICAL SERVICES GROUP - GROUPE DES SERVICES ANALYTIQUES CMR

Royal Military College, Dept. Of Chem. and Chem. Eng., P.O. Box 17000 Stn. Forces, Kingston, ON K7K 7B4
(613) 541-6000 ext 6634 / Fax: (613) 541-6596

Client : **ESG**
12 Verite Ave
Dept. of Chem. / Chem. Eng., RMC
P.O. Box 17000, Stn. Forces
Kingston, Ontario K7K 7B4
(613) 541-6000 ext 6567
Fax: (613) 541-6596

ASG Login No: 9485
Site: Pin-3
ESG No: 03-029
Samples Received: 15-Jul-03
Date of analysis: 02-Aug-03
Method No: ASG 014 & ASG 021
Date Reported: 02-Aug-03
Sheet: 1 of 1

RESULTS OF MERCURY IN WATER ANALYSIS# AMMENDED REPORT

Sample I.D.	Unit	Total Mercury*	Dissolved Mercury
03-07243	µg/L	< 0.4	< 0.1
03-07255*	µg/L	< 0.4	< 0.1
03-07256	µg/L	< 0.4	< 0.1
03-07257	µg/L	< 0.4	< 0.1
03-07258	µg/L	< 0.4	< 0.1
03-07259	µg/L	< 0.4	< 0.1
03-07260	µg/L	< 0.4	< 0.1
03-07261	µg/L	< 0.4	< 0.1

LABORATORY QA/QC

Duplicate : 03-07255	µg/L	< 0.4 ; < 0.4	< 0.1 ; < 0.1
Blank	µg/L	< 0.4	< 0.1
Control Target	µg/L	4.0	2.0
Control	µg/L	4.5	2.2

* Averaged result of duplicates.

^ Acid digestion performed.

Reported at 0.4 µg/L detection limit.

The results reported here relate only to the items tested.

Prepared By: Nelson Melo, Analyst

Authorization: Dr. David Kelly, Assistant Director



RMC ANALYTICAL SERVICES GROUP • GROUPE DES SERVICES ANALYTIQUES CMR

Royal Military College, Dept. Of Chem. and Chem. Eng., P.O. Box 17000 Stn. Forces, Kingston, ON, K7K 7B4
(613) 541-6000 ext 6684 / 1600 (613) 541-8841

Client: ESG
12 Verite Ave
Dept. of Chem. / Chem. Eng., RMC
P.O. Box 17000, Stn. Forces
Kingston, Ontario K7K 7B4
(613) 541-6000 ext 6567
Fax: (613) 541-6596

ASG Login No: 9485
Site: Pin-3
Client No: 03-029
Samples Received: 15-Jul-03
Date of analysis: 15-Jul-03
Method No: ASG 006
Date Reported: 18-Jul-03
Sheet No: 1 of 1

RESULTS OF PCB IN WATER ANALYSIS

Sample Type **	Sample I.D.	Unit	Aroclor 1254	Aroclor 1260
W	03-07243	µg/L	< 3.0	< 3.0
W	03-07255	µg/L	< 3.0	< 3.0
W	03-07256	µg/L	< 3.0	< 3.0
W	03-07257	µg/L	< 3.0	< 3.0
W	03-07258	µg/L	< 3.0	< 3.0
W	03-07259	µg/L	< 3.0	< 3.0
W	03-07260	µg/L	< 3.0	< 3.0
W	03-07261	µg/L	< 3.0	< 3.0

LABORATORY QA/QC

Blank	µg/L	< 3.0	< 3.0
Control Sample	µg/L	< 3.0	19
Control Sample Target	µg/L	< 3.0	16.0

** S = Soil, C = Concrete, PC = Paint Chip, SW = Swab, P = Plant

All results corrected for the recovery of the surrogate decachlorobiphenyl

The results reported here relate only to the items tested.

Prepared By: _____
Stephanie Dwyre, Analyst

Authorization: _____
David Kelly, Assistant Director
03-029-015-0000

APPENDIX B
PHOTOGRAPHS



Photo 1: Camp Sewage Lagoon. The photo was taken on 30 July 2003 from the southwest corner of the lagoon looking northeast. The wettest area of the lagoon in this photo is the northeast corner.



Photo 2: DEW Line Sewage Outfall. This photo was taken on 30 July 2003 once a portion of the dewatering had already been completed. The photo was taken from the southern berm looking north towards the station area. The Station POL Pad and Warehouse are in the background of the photo.

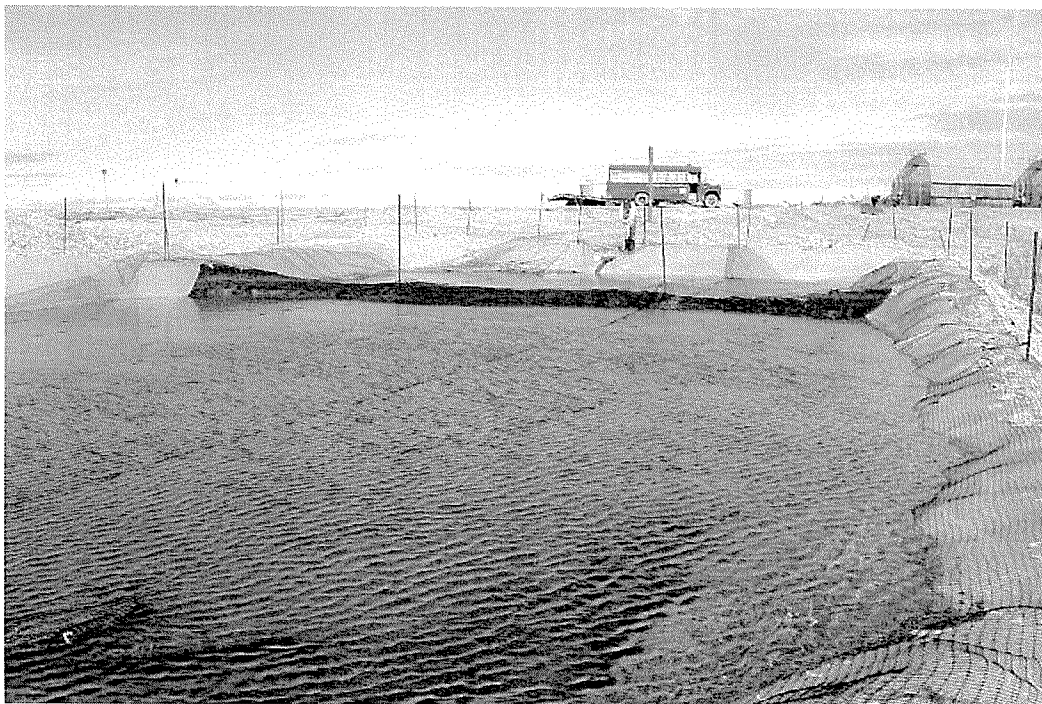


Photo 3 View of the West Module Train Holding Pond at PIN-3 on 8 July 2003. The photo was taken facing south. Samples 03-07255 and 03-07256 were collected from the north and south sections of the holding pond respectively.



Photo 4: View of the East Module Train Holding Pond at PIN-3 on 10 July 2003. The photo was taken facing south. Samples 03-07259 and 03-07260/07261 were collected from the north and south sections of the holding pond respectively.