







LEGEND

 Extent of Study Area

References:

Google Earth satellite image, 2009
Site location based on dGPS coordinates (NAD 83)

Title: STUDY AREA	
 <p>FRANZ ENVIRONMENTAL INC. CONSULTING • ENGINEERING • TECHNOLOGIES</p>	Project: CAMBRIDGE BAY AIRPORT PHASE III ENVIRONMENTAL SITE ASSESSMENT FINAL REPORT
	Client:  PUBLIC WORKS AND GOVERNMENT SERVICES CANADA  TRANSPORT CANADA
Date: MARCH 2010	Scale: See figures for scale
FIGURE 1	



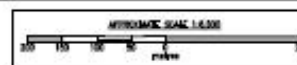
Aerial Photograph Date: 1985
Photo Number: A26791-24
Scale: 1: 5,000



LEGEND

- Area of Potential Environmental Concern (APEC)
- Background Soil Sampling Location (Franz 2009)
- Background Vegetation Sampling Location (Franz 2009)
- Soil/Groundwater Sample Location - CILON 1999
- Soil/Groundwater Sample Location - AGRA 1999

APEC #	Description
1	Screening Plant / Soneyard
2	Shoreline Disposal Area
3	Former Fire Training Area
4	Former F.H. Ross Tank Farm
5	Former AST North of Building T-6
6	Former AST West of Building T-4



Reference:
Google Earth satellite image, 2009
APEC locations based on GPS coordinates (UTM - NAD 83)
Sampling locations derived from historical reports

APEC LOCATIONS



CONSULTING • ENGINEERING • TECHNOLOGIES

Date: MARCH 2010

Scale: 1 : 6,600

Project:
CAMBRIDGE BAY AIRPORT PHASE III
ENVIRONMENTAL SITE ASSESSMENT
FINAL REPORT

Client:
PUBLIC WORKS AND
GOVERNMENT SERVICES
CANADA



FIGURE 2

SOIL

Station ID		3-09-481	3-09-481	3-09-581
Field label		3-09-481-2	3-09-481-3	3-09-581-2
Duplicate ID				
Date		29/Aug/09	29/Aug/09	29/Aug/09
Lab report ID		A947023	A947023	A947023
Depth (m)		0.5-1	2-2.1	0.5-1
PHCs				
Benzo(a)pyrene	0.03	4.88	1.2	<0.001
F2 (C10-C16)	268*	36	77	100

Station ID		3-09-481	3-09-481
Field label		3-09-481-2	3-09-481-3
Duplicate ID		3-09-481-2	3-09-481-3
Date		29/Aug/09	29/Aug/09
Lab report ID		A947023	A947023
Depth (m)		1-2	1-2
PHCs			
Benzo(a)pyrene	0.002	0.08	0.19
F2 (C10-C16)	268*	954	904



LEGEND

- Extent of APEC
- Soil Sample (TP): compliant with CCME guidelines
- Soil Sample (TP): exceeds CCME guidelines
- Vegetation Sample (VD): compliant with Ontario MOE guidelines

Reference:
Google Earth satellite image, 2008
No exceedances were found in vegetation in APEC 3
Site locations based on GPS coordinates (UTM - NAD 83)
CCME Soil Guidelines for Commercial Land Use (2008)
Vegetation analytical results compared to Ontario MOE Vegetation Guidelines

APEC 3 - Former Fire Training Area Sampling Locations and Analytical Results - Soil & Vegetation



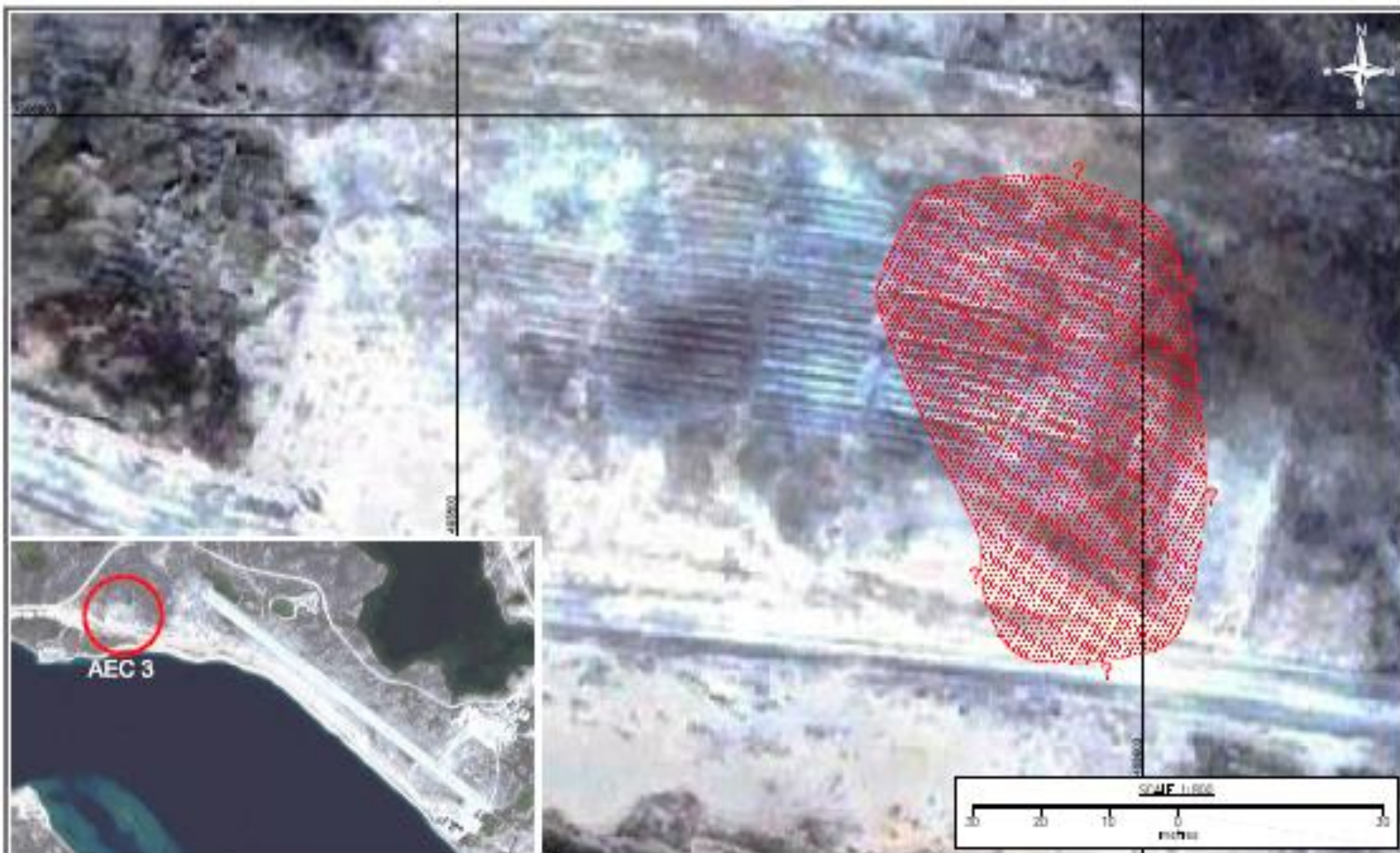
Project:
CAMBRIDGE BAY AIRPORT PHASE II
ENVIRONMENTAL SITE ASSESSMENT
FINAL REPORT

Date:
MARCH 2010



Client:
TRANSPORT CANADA

Scale:
1:1,000

Figure:
FIGURE 6



LEGEND

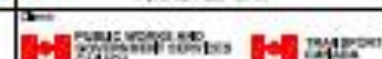
-  Approximate extent of contamination
-  Extent not fully delineated

AEC 3 - Estimated Extent of Contamination



Project: CAMBRIDGE BAY AIRPORT PHASE III
ENVIRONMENTAL SITE ASSESSMENT
FINAL REPORT

Date: MARCH 2010



Scale: 1 : 800

FIGURE 12

References:
Google Earth satellite image, 2008
Site location based on GCS coordinates (UTM - NAD 83)