

August 1, 2014



Photo #1: View looking west during PFOS Investigation Test Pit program.



Photo #2: View looking north during sample collection for PFOS Investigation.



August 2, 2014



Photo #3: View looking northwest of selected FTA LTU site prior to construction.

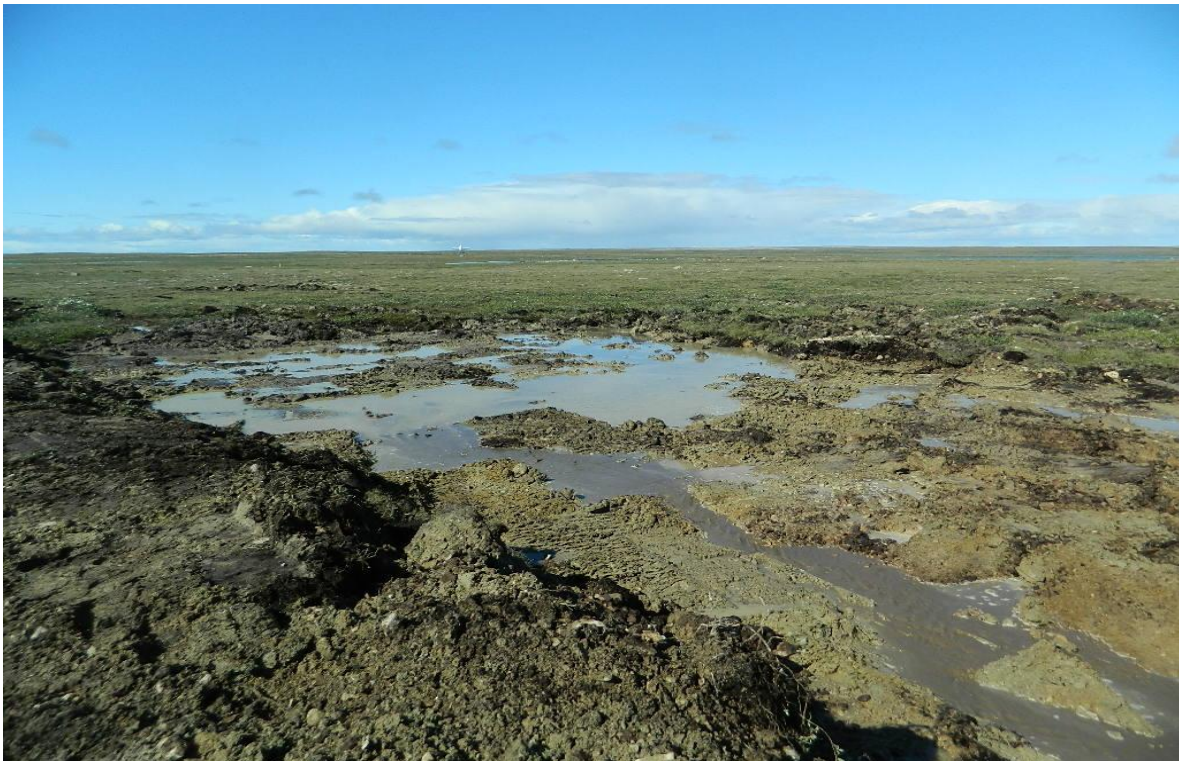


Photo #4: View looking north of selected FTA LTU site after initial grubbing process.





Photo #5: View looking northeast of excavator digging trench for water drainage of FTA LTU.



Photo #6: View looking northwest during initial grubbing process.



August 3, 2014



Photo #7: View looking northwest at first set of barrels found below ground during initial grubbing process.



Photo #8: View looking east while pumping out water holes.





Photo #9: View looking southwest at FTA LTU after some success with bulldozer in grubbing soils. A small portion of the total LTU area was found to contain less clays and more silty gravels.

**August 4, 2014**



Photo #10: View looking northwest, orange tape represents areas of strong metal detection readings underground.





Photo #11: View looking southwest of several large water holes being pumped of water. Bailed materials in background.



Photo #12: View northeast of several boulders pulled during grubbing process.



August 5, 2014



Photo #13: View looking northwest during ongoing grubbing and dewatering. Berms starting to be constructed.



Photo #14: View looking south after flattening LTU base with wide track bulldozer.



August 6, 2014



Photo #15: View looking north, material bailed out of LTU footprint and placed for outer berm construction.



Photo #16: View looking southeast of the southern berm and water hole.





Photo #17: View looking north during initial berm construction.



Photo #18: View looking southeast at ungrubbed barrel site.



August 8, 2014



Photo #19: View looking north during barrel access road construction.



Photo #20: View looking west of removal of surface soils and exposed barrels.





Photo #21: Markings “20W MOT” found on several of the barrels removed.



Photo #22: View looking southeast of first set of barrels removed and placed into Apron LTU.



August 9, 2014



Photo #23: View looking northeast of the construction of ballast material access road.



Photo #24: View looking northwest of ballast material access road and constructed south berm.



August 10, 2014



Photo #25: View looking northeast during continued berm construction.



Photo #26: View looking at one of many former munitions cylinders found amongst buried barrels.



August 12, 2014



Photo #27: View looking northwest of ongoing construction of FTA LTU.

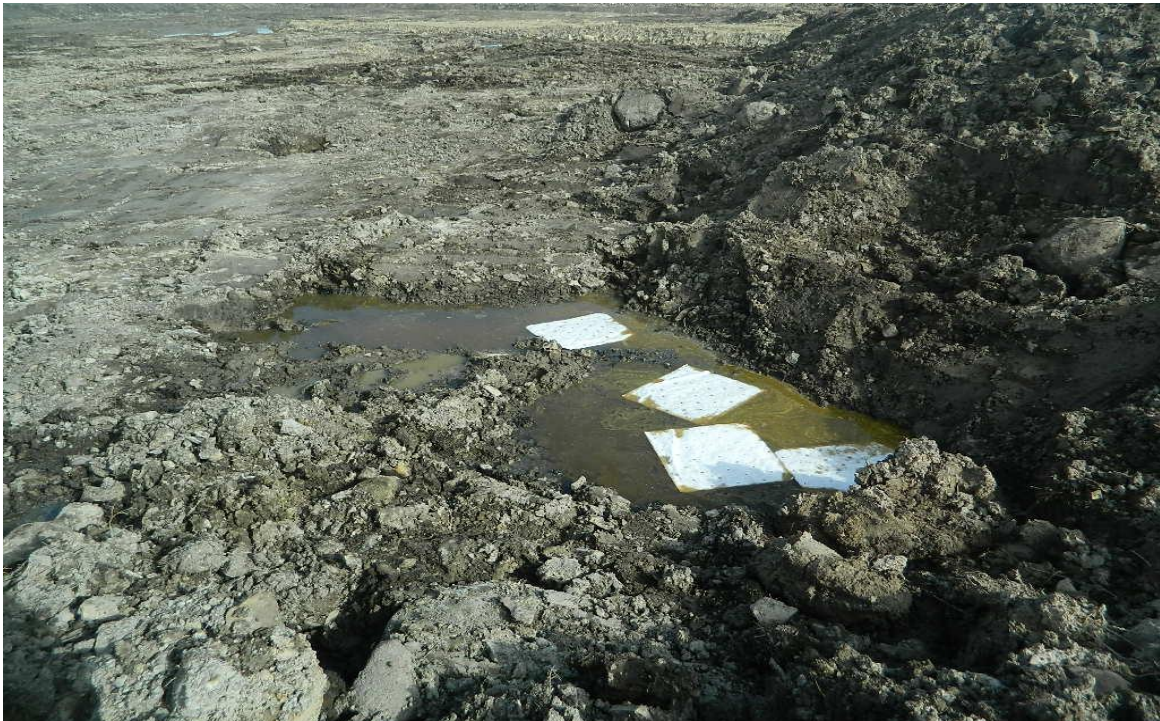


Photo #28: View of one of two water holes with free standing product as a result of removing barrel caches.



August 15, 2014



Photo #29: One of four test pits dug to examine soil conditions within FTA LTU.



Photo #30: Sidewall view. Clays encountered to permafrost were seen.



August 16, 2014



Photo #31: View looking southeast of limits of total barrel cache investigation.



Photo #32: View looking east during test pitting of total barrel cache investigation.



August 19, 2014



Photo #33: View looking north as impacted water is pumped out of barrel cache pits and stored in barrels.



Photo #34: Removing the remaining cylinders and barrels from the investigated area.





Photo #35: View looking southeast at the excavated barrels and cylinders being placed in the Apron LTU.



Photo #36: View looking northwest at the excavation and removal of barrels and cylinders to permafrost layer.





Photo #37: Cylinders being separated to be placed into Apron LTU



Photo #38: View looking southeast of excavation and removal of barrels and cylinders to permafrost layer.



August 20, 2014



Photo #39: View looking southwest at the final stockpile of barrels and cylinders removed from FTA LTU.



Photo #40: View looking northwest at the barrel cache excavation during impacted soil removal.





Photo #41: View looking north at final excavation of all barrel/cylinder cache and impacted soils.



Photo #42: View looking northeast as the backfilling of excavation with clean pitrun material begins.



**August 21, 2014**



Photo #43: View looking north at the backfilling and compacting of barrel cache excavation.



Photo #44: View looking north at completed backfilled barrel cache excavation.



**August 22, 2014**



Photo #45: View looking northwest at the north berm during shaping.

**August 23, 2014**



Photo #46: View looking north at the west berm during shaping.



August 25, 2014



Photo #47: Removing free product from excavated barrels. Free product was captured and placed into new barrels for off-site removal.

August 28, 2014



Photo #48: Looking east along southern FTA LTU berm.