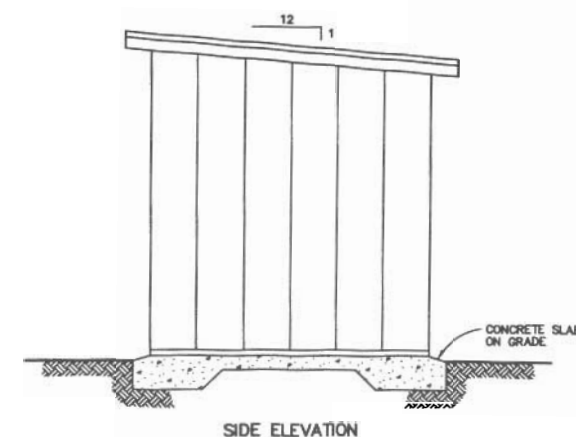
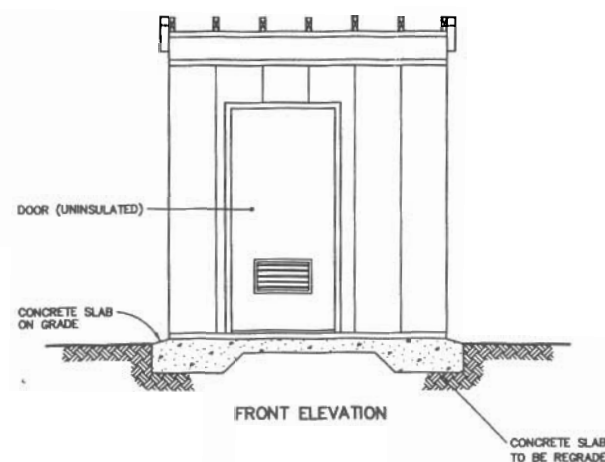
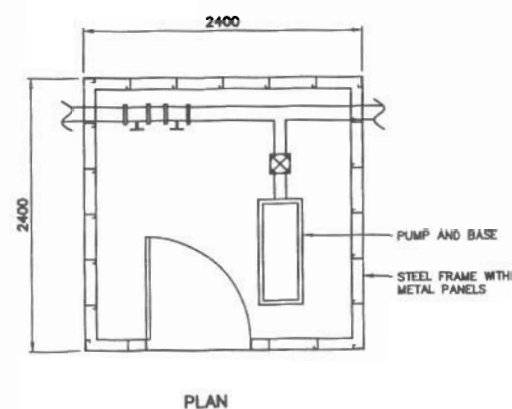


General Notes:

1. ALL DIMENSIONS ARE IN MILLIMETRES UNLESS NOTED OTHERWISE.
2. REFER TO DEMOLITION TABLES IN SPECIFICATIONS FOR LIST OF MAJOR BUILDING CONTENTS.
3. FACILITIES TO BE DEMOLISHED MAY CONTAIN PCB AND LEAD CONTAMINATED PAINT. REFER TO SECTION 02060 OF THE SPECIFICATIONS.

Legend:

BCE NUMBER	COMMENTS
13	AS SHOWN, PUMP, PUMP BASE AND PIPING INSIDE.



POL PUMPHOUSE
N.T.S.

No.	DATE	REVISION	REVISION
-----	------	----------	----------

DRAFT

uma **STEE**

SCALE - ECHELLE AS SHOWN

PROJECT - PROJET
CAM-2 GLADMAN POINT

DEW LINE CLEAN UP

© COPYRIGHT
HER MAJESTY THE QUEEN IN RIGHT OF
CANADA 2001, AS REPRESENTED BY THE
MINISTER OF NATIONAL DEFENCE

TRADE - METIER STRUCTURAL DATE 2002-12

SUBJECT - SUJET

POL PUMPHOUSE
PLAN AND ELEVATIONS

PRODUCTION	CONCURRENCE - ASSENTIMENT
DESIGNED ETUDIE ANP/KMS	DES OFF AGENT CONCEPT
DRAWN DESSINE RN/MH	SECT HD CHIEF SECT
CHECKED VERIFIE RRM	DES MOR GEST CONCEPT
COORDINATION SMS	REVIEWED - REVU

DWG. NO. - DESSIN NO.
H-G38/1-9101-206

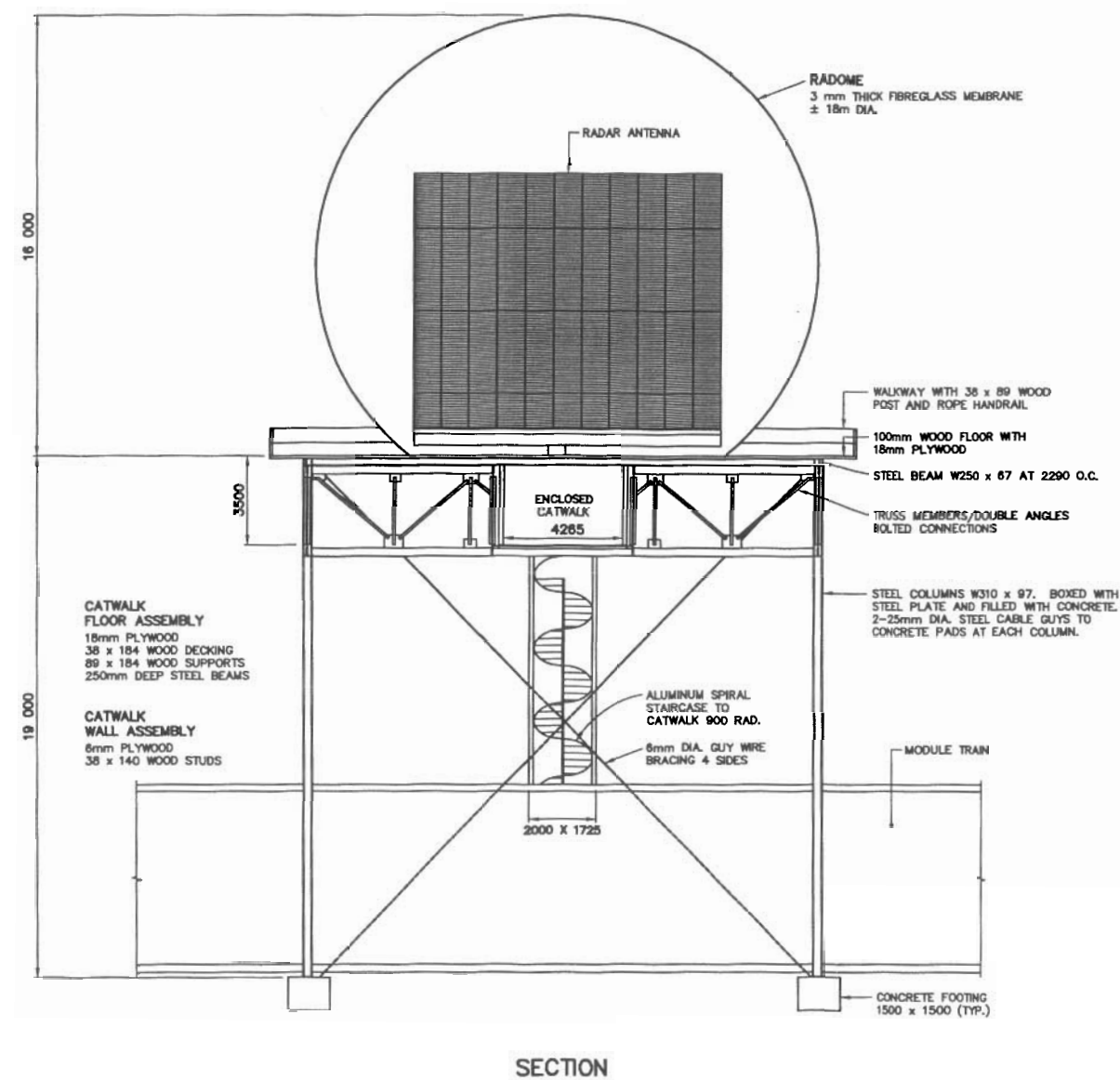
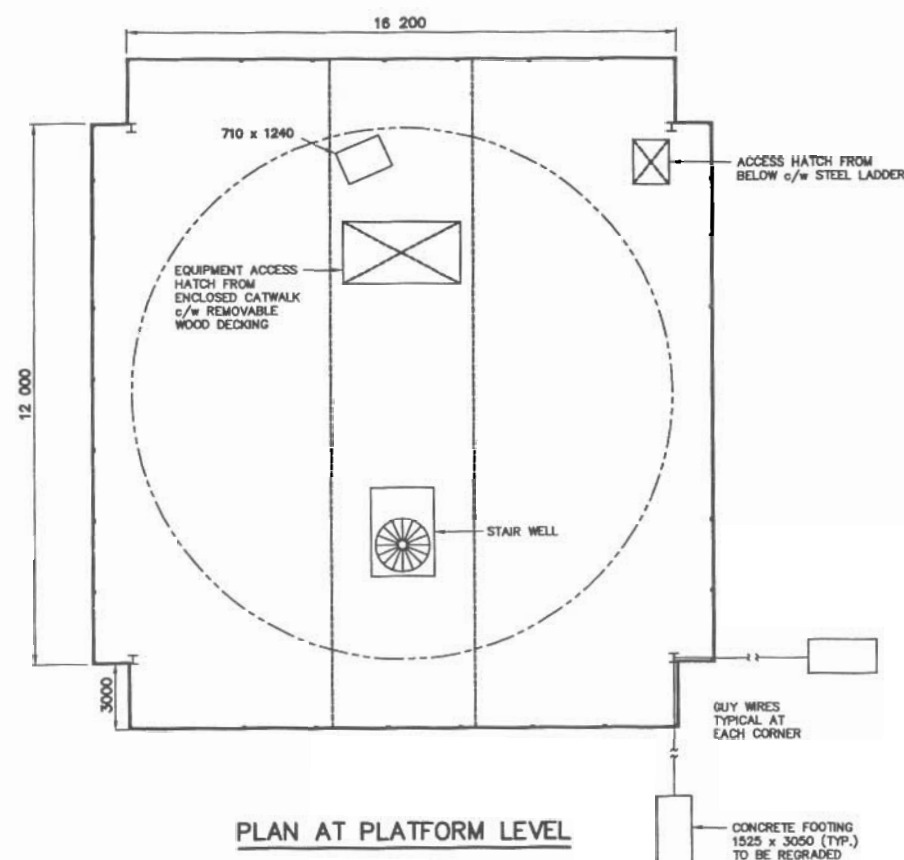
Canada

General Notes:

1. ALL DIMENSIONS ARE IN MILLIMETRES UNLESS NOTED OTHERWISE.
2. REFER TO DEMOLITION TABLES IN SPECIFICATIONS FOR LIST OF MAJOR BUILDING CONTENTS.
3. FACILITIES TO BE DEMOLISHED MAY CONTAIN PCB AND LEAD CONTAMINATED PAINT. REFER TO SECTION 02060 OF THE SPECIFICATIONS.

Legend:

BCE NUMBER	COMMENTS
—	RADAR TOWER, RADAR ANTENNA AND RADOME ARE ALL AS SHOWN.
8	TOTAL GUY WIRES APPROX. 15.5m LONG EACH COMPLETE WITH 1525 x 3050 CONCRETE BLOCK



No.	DATE	REVISION	REVISION
-----	------	----------	----------

DRAFT

UMA SEE

SCALE - ECHELLE 2 1 0 2 4

PROJECT - PROJET
CAM-2 GLADMAN POINT

DEW LINE CLEAN UP

© COPYRIGHT
HER MAJESTY THE QUEEN IN RIGHT OF
CANADA 2001, AS REPRESENTED BY THE
MINISTER OF NATIONAL DEFENCE.

TRADE - METIER STRUCTURAL DATE 2002-1
SUBJECT - SUJET

RADAR TOWER / RADOME
PLAN AND SECTION

PRODUCTION	CONCURRENCE - ASSENTIMENT
DESIGNED ETUDE ANP/KMS	DES OFF AGENT CONCE
DRAWN DESSINE RN/MH	SECT MD CHIEF SECT
CHECKED VERIFIE RRM	DES MGR BEST CONCEP
COORDINATION SMS	REVIEWED - REVU

DWG. NO. - DESSIN NO.
H-638/1-9101-209

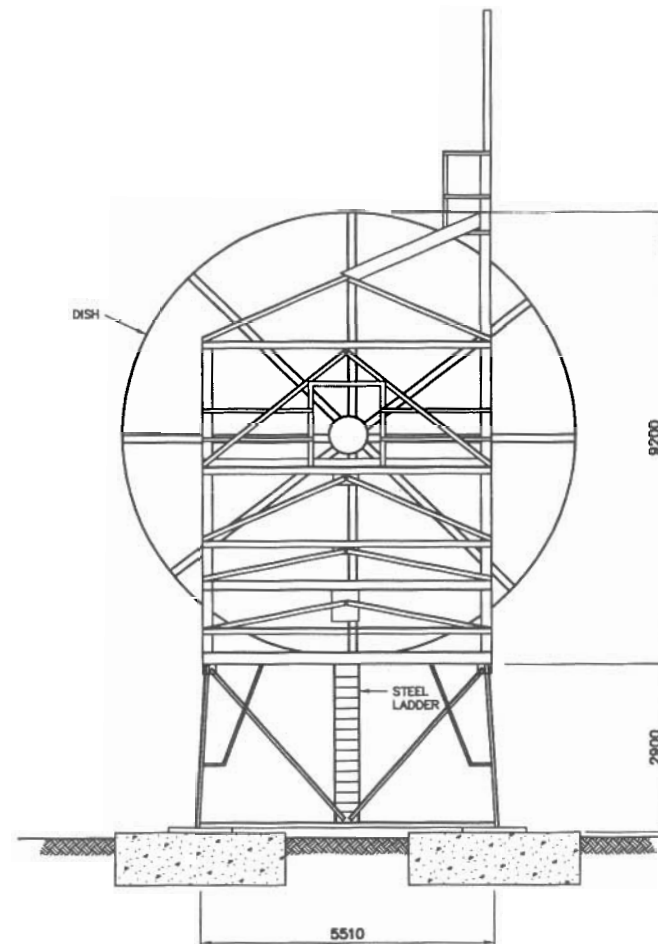
Canada

General Notes:

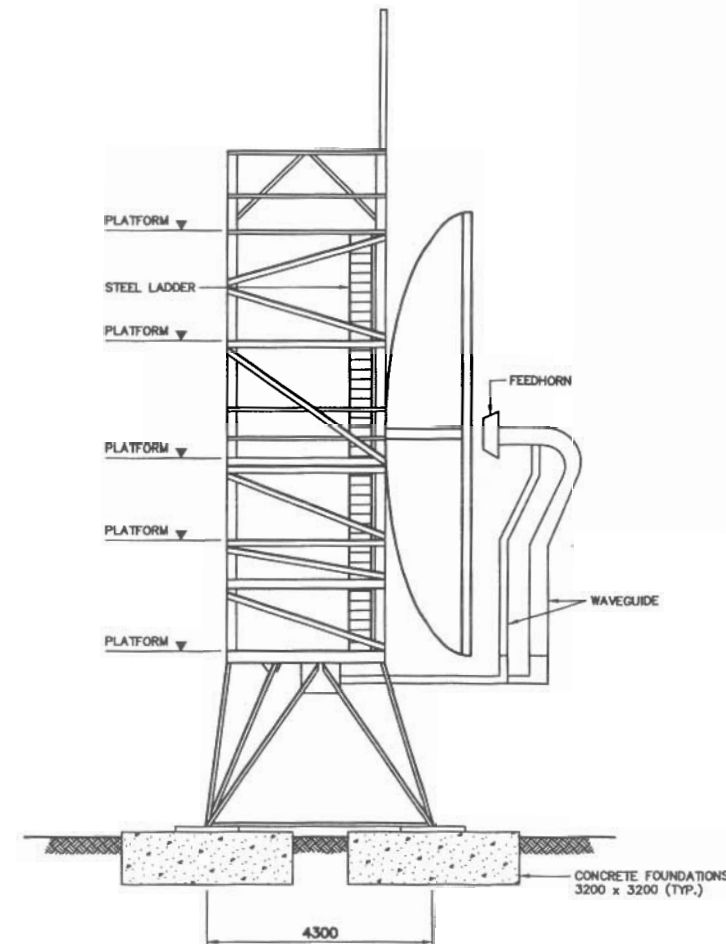
1. ALL DIMENSIONS ARE IN MILLIMETRES UNLESS NOTED OTHERWISE.
2. REFER TO DEMOLITION TABLES IN SPECIFICATIONS FOR LIST OF MAJOR BUILDING CONTENTS.
3. FACILITIES TO BE DEMOLISHED MAY CONTAIN PCB AND LEAD CONTAMINATED PAINT. REFER TO SECTION 02060 OF THE SPECIFICATIONS.

Legend:

BCE NUMBER	COMMENTS
5	AS SHOWN.
6	



REAR ELEVATION
 N.T.S.



SIDE ELEVATION
 N.T.S.

No.	DATE	REVISION	REVISION
-----	------	----------	----------

DRAFT

UTM SEE
 SCALE - ECHELLE AS SHOWN

PROJECT - PROJET
 CAM-2 GLADMAN POINT

DEW LINE CLEAN UP

© COPYRIGHT
 HER MAJESTY THE QUEEN IN RIGHT OF
 CANADA 2001, AS REPRESENTED BY THE
 MINISTER OF NATIONAL DEFENCE.

TRADE - METIER STRUCTURAL DATE 2002-1

SUBJECT - SUJET

COMMUNICATION DISH
 ELEVATIONS

PRODUCTION	CONCURRENCE - ASSENTIMENT
DESIGNED ETUOIE AMP/KMS	DES OFF AGENT CONCOE
DRAWN DESSINE RM/MH	SECT HD CHIEF SECT
CHECKED VERIFIE RRM	DES MGR DEST CONCOE
COORDINATION SMS	REVIEWED - REVU

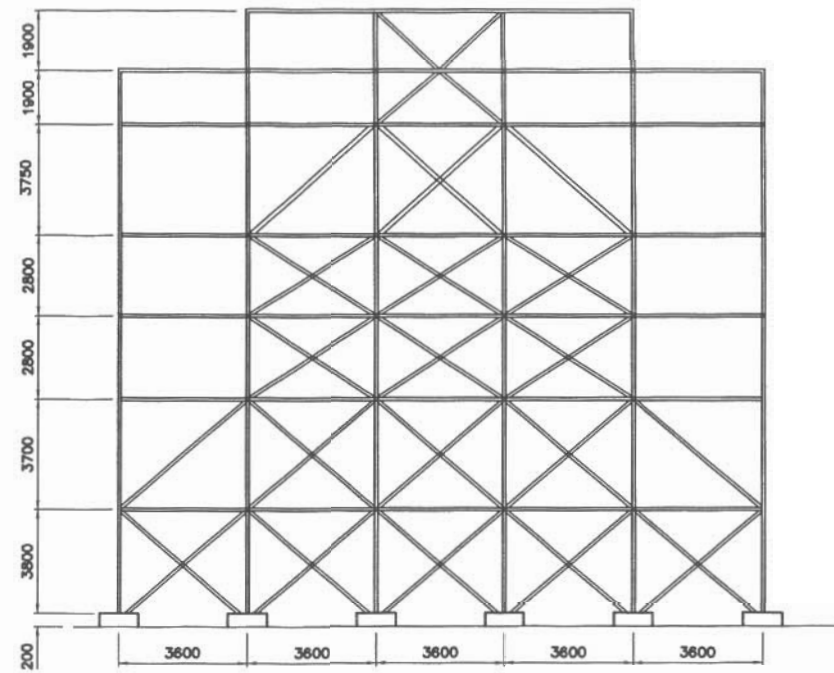
DWG. NO. - DESSIN NO.
 H-636/1-9101-210

Canada

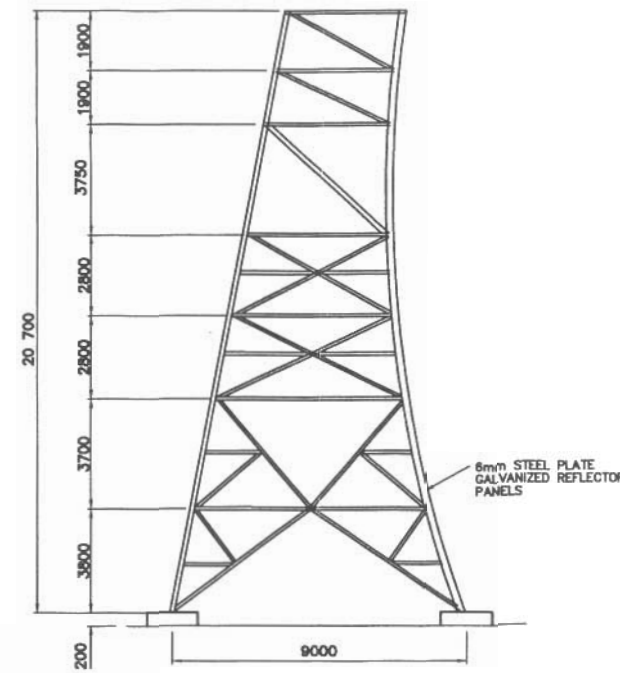
General Notes:

1. ALL DIMENSIONS ARE IN MILLIMETRES UNLESS NOTED OTHERWISE.
2. REFER TO DEMOLITION TABLES IN SPECIFICATIONS FOR LIST OF MAJOR BUILDING CONTENTS.

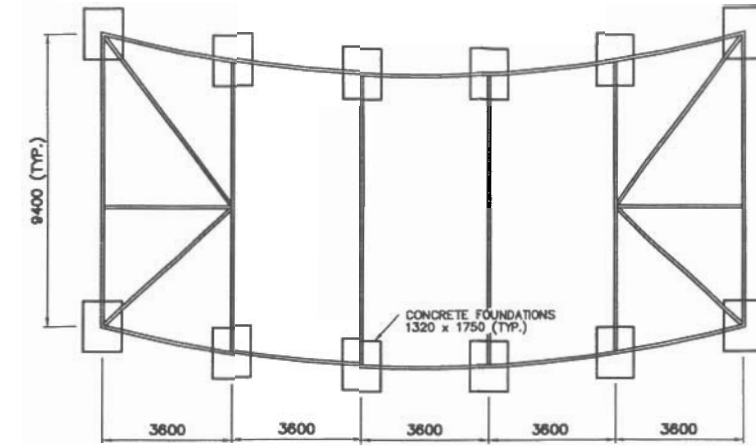
Legend:



REAR ELEVATION

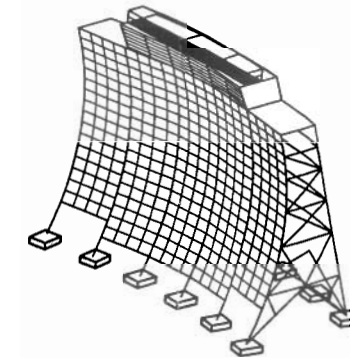


SECTION



PLAN

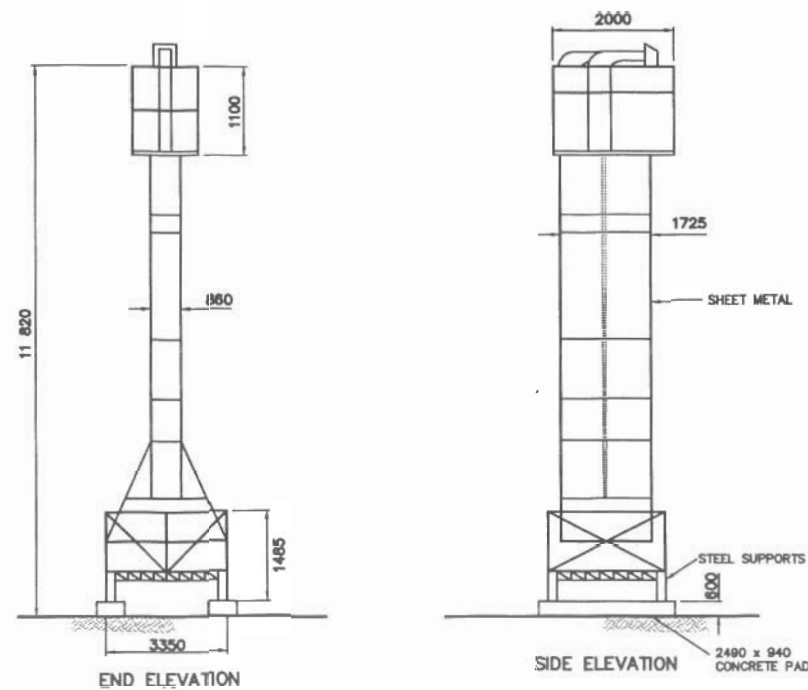
NOTE:
VISIBLE FOUNDATIONS ARE 1320 x 1750
CONCRETE FOOTINGS AT GRADE.



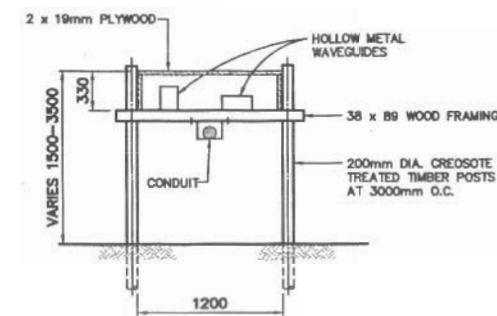
ISOMETRIC VIEW

COMMUNICATION BILLBOARD

N.T.S.

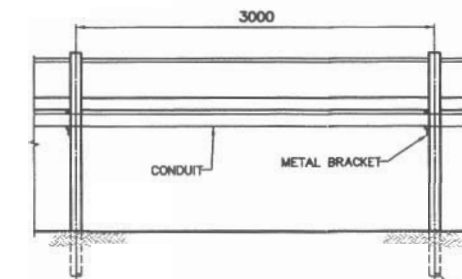


TYPICAL FEEDHORN



SECTION

NOTE:
WAVEGUIDE 120m TOTAL LENGTH



SIDE ELEVATION

NOTE: SOME POLES
EMBEDDED IN
CONCRETE FILLED
BARRELS

TYPICAL WAVEGUIDE



No.	DATE	REVISION	REVISION
-----	------	----------	----------

DRAFT

uma sse

SCALE - ECHELLE AS SHOWN

PROJECT - PROJET
CAM-2 GLADMAN POINT

DEW LINE CLEAN UP

© COPYRIGHT
HER MAJESTY THE QUEEN IN RIGHT OF
CANADA 2001, AS REPRESENTED BY THE
MINISTER OF NATIONAL DEFENCE.

TRADE - METIER STRUCTURAL DATE 2002-12

SUBJECT - SUJET
COMMUNICATION BILLBOARD,
FEEDHORN AND WAVEGUIDE
PLAN, SECTIONS AND ELEVATION

DESIGNED ETUDE	ANP/KMS	DES OFF AGENT CONCEPT
DRAWN DESSINE	RN/MH	SECT HD CHIEF SECT
CHECKED VERIFIE	RRM	DES MGR GEST CONCEPT
COORDINATION SMS		REVIEWED - REVU

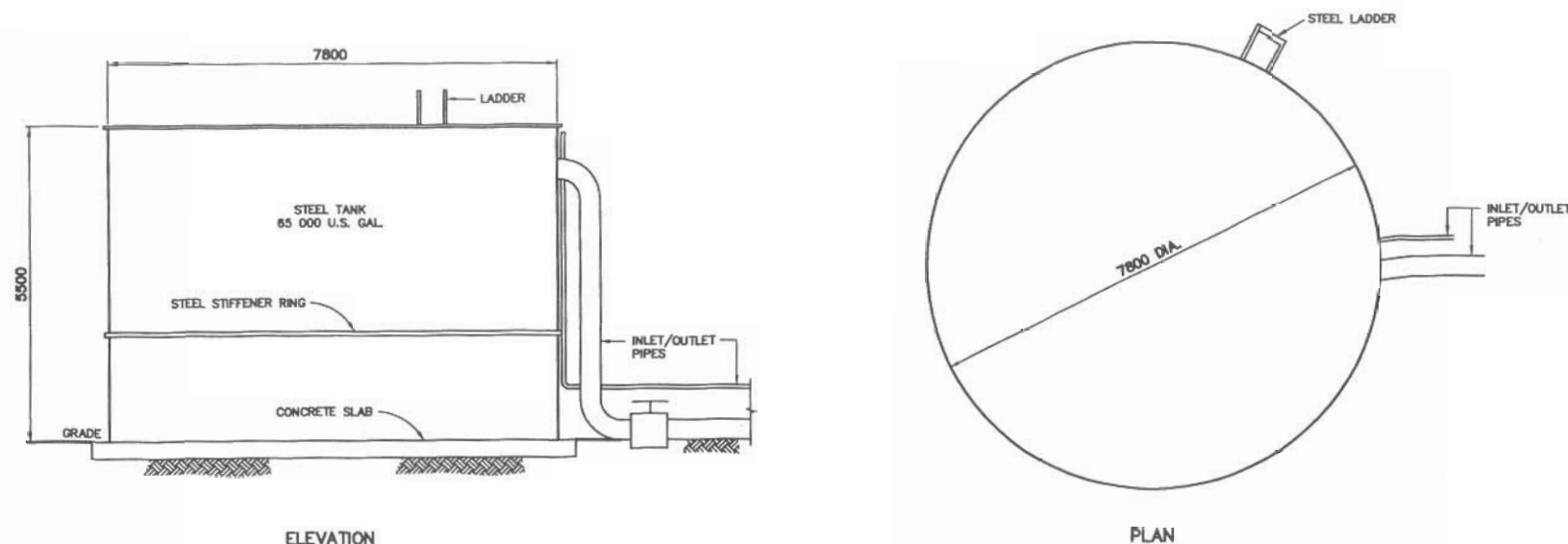
DWG. NO. - DESSIN NO.
H-G36/1-9101-211

Canada

General Notes:

1. ALL DIMENSIONS ARE IN MILLIMETRES UNLESS NOTED OTHERWISE.
2. REFER TO DEMOLITION TABLES IN SPECIFICATIONS FOR LIST OF DEMOLITION ITEMS.
3. FACILITIES TO BE DEMOLISHED MAY CONTAIN PCB AND LEAD CONTAMINATED PAINT. REFER TO SECTION 02080 OF THE SPECIFICATIONS.

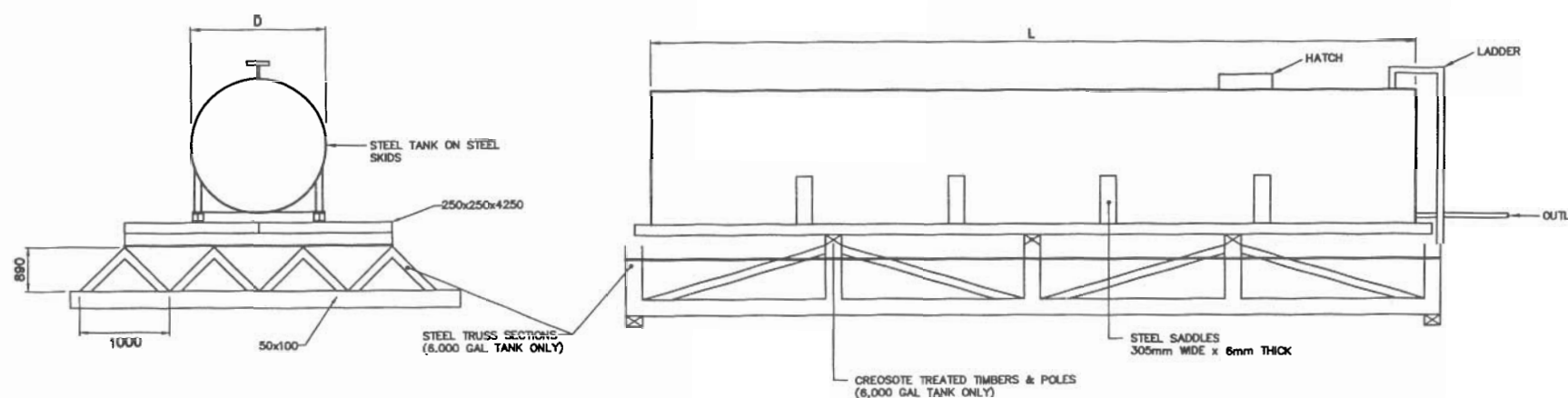
Legend:



DIESEL FUEL TANK

N.T.S.

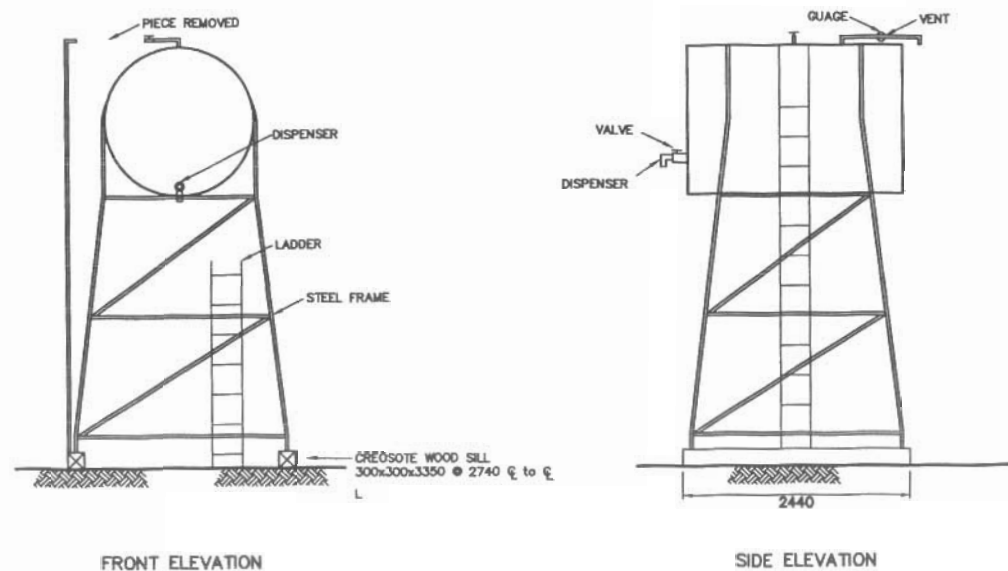
BCE NUMBER	COMMENTS
8	85 000 US GALLON CAPACITY (DIESEL)
9	
10	



FUEL TANK

N.T.S.

BCE NUMBER	COMMENTS
-	15,300 US GALLON CAPACITY (MOGAS) D = 2500mm ; L = 14 000mm 6 - STEEL SADDLES AT 2200mm O.C.
-	
-	8000 US GALLON CAPACITY (MOGAS) D = 2300mm ; L = 5500mm 4 - STEEL SADDLES AT 1400mm O.C. 11 - TIMBER SILL BEAMS AND POLES



500 GALLON TANK

N.T.S.

BCE NUMBER	COMMENTS
-	500 US GALLON CAPACITY (DIESEL) CYLINDRICAL STEEL TANK. D = 1200mm ; L = 1800mm

No.	DATE	REVISION	REVISION
-----	------	----------	----------

DRAFT

uma **STE**

SCALE - ÉCHELLE AS SHOWN

PROJECT - PROJET
CAM-2 GLADMAN POINT

DEW LINE CLEAN UP

© COPYRIGHT
HER MAJESTY THE QUEEN IN RIGHT OF
CANADA 2001, AS REPRESENTED BY THE
MINISTER OF NATIONAL DEFENCE.

TRADE - MÉTIER STRUCTURAL DATE 2002-11

SUBJECT - SUJET

**FUEL TANKS
PLAN AND ELEVATIONS**

PRODUCTION	CONCURRENCE - ASSESSMENT
DESIGNED ETUDE AMP/KMS	DES OFF AGENT CONCEP
DRAWN DESSINE RM/MH	SECT HD CHEF SECT
CHECKED VERIFIE RRM	DES MOR GEST CONCEP1
COORDINATION SMS	REVIEWED - REVU

DWG. NO. - DESSIN NO.
H-G36/1-9101-212

Canada