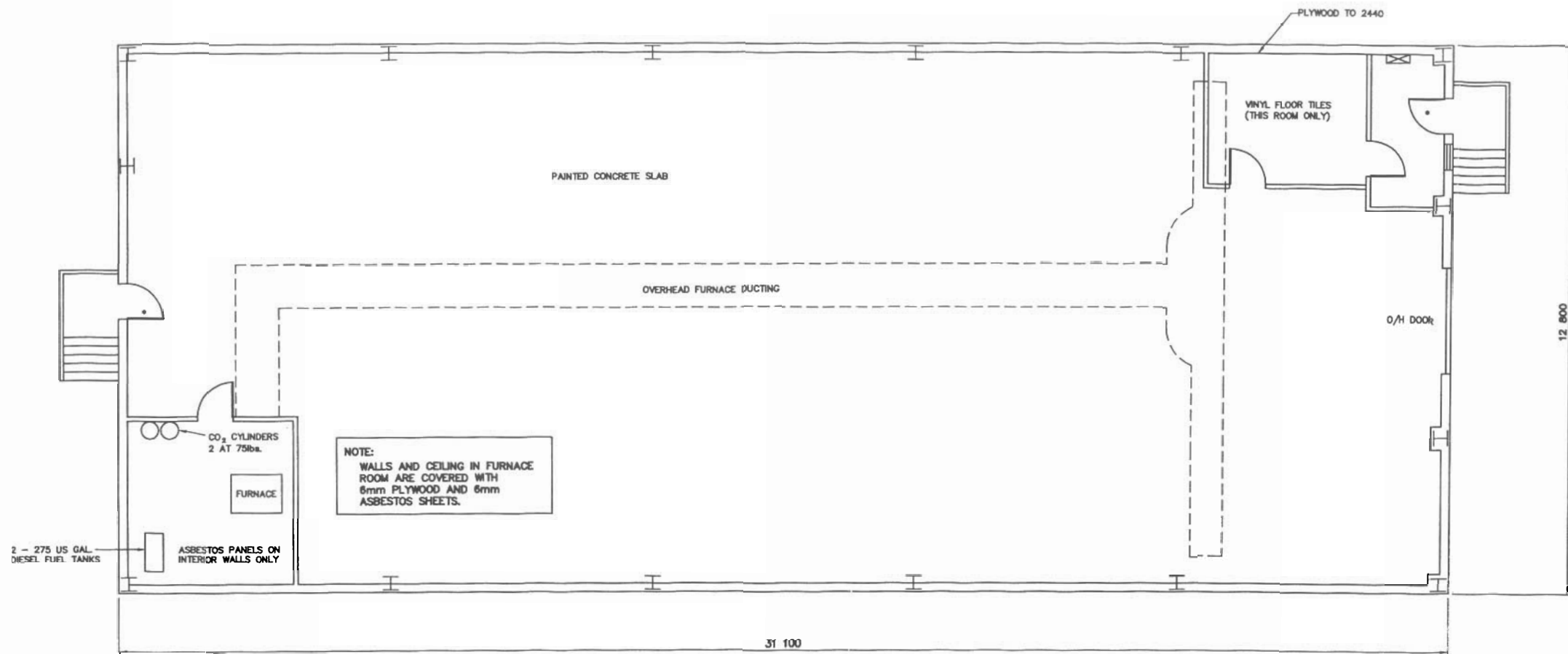


General Notes:

1. ALL DIMENSIONS ARE IN MILLIMETRES UNLESS NOTED OTHERWISE.
2. ASBESTOS PANELS TO BE REMOVED FROM FURNACE ROOM WALLS.
3. REFER TO DEMOLITION TABLES IN SPECIFICATIONS FOR LIST OF MAJOR BUILDING CONTENTS.
4. FACILITIES TO BE DEMOLISHED MAY CONTAIN PCB AND LEAD CONTAMINATED PAINT. REFER TO SECTION 02060 OF THE SPECIFICATIONS.

Legend:

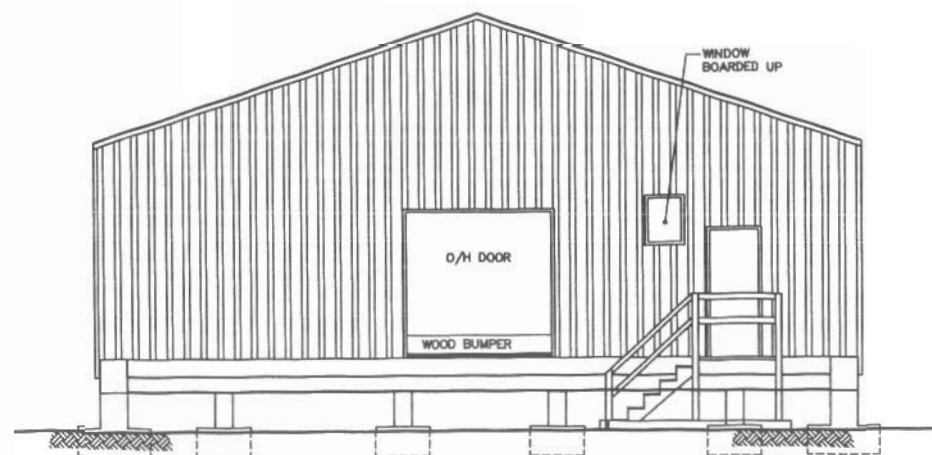


PLAN

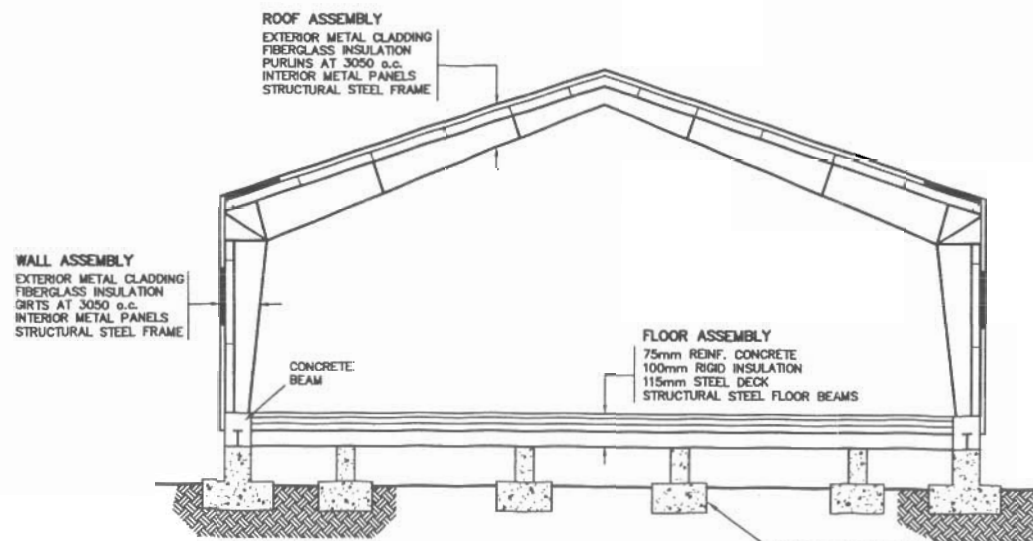
LIGHTING
COMBINATION OF FLOURESCENT
AND INCANDESCENT

DOORS
* ASBESTOS CORE

BCE NUMBER	COMMENTS
4	AS SHOWN



ELEVATION



SECTION

No.	DATE	REVISION	REVISION

DRAFT

SCALE - ECHELLE 1 0.5 0 1 2

PROJECT - PROJET
CAM-2 GLADMAN POINT

DEW LINE CLEAN UP

© COPYRIGHT
HER MAJESTY THE QUEEN IN RIGHT OF
CANADA 2001, AS REPRESENTED BY THE
MINISTER OF NATIONAL DEFENCE.

TRADE - METIER STRUCTURAL DATE 2002-11-

SUBJECT - SUJET

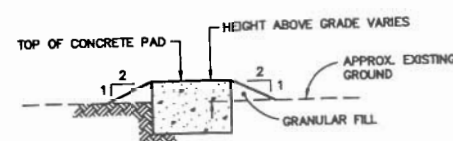
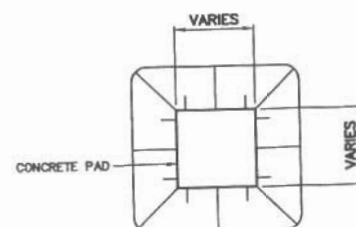
WAREHOUSE
PLAN, SECTION AND ELEVATION

PRODUCTION	CONCURRENCE - ASSENTMENT
DESIGNED ETUDE ANP/XMS	DES OFF AGENT CONCEPT
DRAWN DESSINE RN/MH	SECT HD CHIEF SECT
CHECKED VERIFIE RRM	DES MOR GEST CONCEPT
COORDINATION SMS	REVIEWED - REVU

DWG. NO. - DESSIN NO.
H-G36/1-9101-203

Canada

KEY PLAN



TYPICAL CONCRETE PAD REGRADING DETAIL

N.T.S.

7 618 600 N

7 618 550 N

7 618 500 N

PRIMARY POWER CABLE TO BE REMOVED.

BURIED POWER CABLE TO REMAIN.

548 400 E

7 618 700 N

7 618 650 N

2 UTILITY POLES (BROKEN OFF) TO BE REMOVED

COMMUNICATION DISH (TYP.) SEE DWG. H-G36/1-9101-210 FOR DETAILS

MODULE TRAIN. SEE DWG. H-G36/1-9101-205 AND H-G36/1-9101-206 FOR DETAILS.

SATELLITE DISH (BASE ONLY) TO BE REMOVED

GARAGE SEE DWG. H-G36/1-9101-204 FOR DETAILS.

DIESEL FUEL DAY TANK (STEEL, 500 US GAL) SEE DWG. H-G36/1-9101-212 FOR DETAILS.

WAREHOUSE SEE DWG. H-G36/1-9101-203 FOR DETAILS.

MOGAS TANK (STEEL, 6000 US GAL) SEE DWG. H-G36/1-9101-212 FOR DETAILS.

TRANSFORMER PLATFORM TO BE REMOVED

STEVENSON SCREEN TO BE REMOVED.

COMMUNICATION BILLBOARD (TYPICAL) SEE DWG. H-G36/1-9101-211 FOR DETAILS.

450mm DIA. CSP 12m LONG (PARTIALLY BURIED) TO BE REMOVED

5 UTILITY POLES WITH 3 GUY WIRES EACH IF AIR GROUND ANTENNA

RADAR/TOWER/RADOME SEE DWG. H-G36/1-9101-209 FOR DETAILS.

WAVEGUIDE (TYP.) SEE DWG. H-G36/1-9101-211 FOR DETAILS.

DIESEL FUEL TANK (STEEL, 65,000 US GAL) SEE DWG. H-G36/1-9101-204 FOR DETAILS.

POL PUMPHOUSE SEE DWG. H-G36/1-9101-208 FOR DETAILS.

DIESEL FUEL TANK (STEEL, 65,000 US GAL) SEE DWG. H-G36/1-9101-212 FOR DETAILS.

SEWAGE OUTFALL LINE APPROX. LENGTH 45m TO BE REMOVED.

ABANDONED SRR FUEL LINE TO BE REMOVED

CONTAINMENT BERM TO BE RESHAPED.

NOTE: RAPTORS MAY BE NESTING IN COMMUNICATION BILLBOARD. DEMOLITION REQUIREMENTS TO BE REVIEWED AT TIME OF CLEAN UP.

ABANDONED SRR FUEL LINE TO BE REMOVED

7 618 750 N

7 618 700 N

7 618 650 N

7 618 600 N

7 618 550 N

7 618 500 N

548 700 E

548 650 E

548 550 E

548 450 E

548 350 E

548 400 E

548 300 E

548 250 E

548 150 E

548 100 E

548 50 E

548 0 E

548 250 E

548 350 E

548 400 E

548 450 E

548 500 E

548 550 E

548 600 E

548 650 E

548 700 E

548 750 E

548 800 E

548 850 E

548 900 E

548 950 E

548 1000 E

548 1050 E

548 1100 E

548 1150 E

548 1200 E

548 1250 E

548 1300 E

548 1350 E

548 1400 E

548 1450 E

548 1500 E

548 1550 E

548 1600 E

548 1650 E

548 1700 E

548 1750 E

548 1800 E

548 1850 E

548 1900 E

548 1950 E

548 2000 E

548 2050 E

548 2100 E

548 2150 E

548 2200 E

548 2250 E

548 2300 E

548 2350 E

548 2400 E

548 2450 E

548 2500 E

548 2550 E

548 2600 E

548 2650 E

548 2700 E

548 2750 E

548 2800 E

548 2850 E

548 2900 E

548 2950 E

548 3000 E

548 3050 E

548 3100 E

548 3150 E

548 3200 E

548 3250 E

548 3300 E

548 3350 E

548 3400 E

548 3450 E

548 3500 E

548 3550 E

548 3600 E

548 3650 E

548 3700 E

548 3750 E

548 3800 E

548 3850 E

548 3900 E

548 3950 E

548 4000 E

548 4050 E

548 4100 E

548 4150 E

548 4200 E

548 4250 E

548 4300 E

548 4350 E

548 4400 E

548 4450 E

548 4500 E

548 4550 E

548 4600 E

548 4650 E

548 4700 E

548 4750 E

548 4800 E

548 4850 E

548 4900 E

548 4950 E

548 5000 E

548 5050 E

548 5100 E

548 5150 E

548 5200 E

548 5250 E

548 5300 E

548 5350 E

548 5400 E

548 5450 E

548 5500 E

548 5550 E

548 5600 E

548 5650 E

548 5700 E

548 5750 E

548 5800 E

548 5850 E

548 5900 E

548 5950 E

548 6000 E

548 6050 E

548 6100 E

548 6150 E

548 6200 E

548 6250 E

548 6300 E

548 6350 E

548 6400 E

548 6450 E

548 6500 E

548 6550 E

548 6600 E

548 6650 E

548 6700 E

548 6750 E

548 6800 E

548 6850 E

548 6900 E

548 6950 E

548 7000 E

548 7050 E

548 7100 E

548 7150 E

548 7200 E

548 7250 E

548 7300 E

548 7350 E

548 7400 E

548 7450 E

548 7500 E

548 7550 E

548 7600 E

548 7650 E

548 7700 E

548 7750 E

548 7800 E

548 7850 E

548 7900 E

548 7950 E

548 8000 E

548 8050 E

548 8100 E

548 8150 E

548 8200 E

548 8250 E

548 8300 E

548 8350 E

548 8400 E

548 8450 E

548 8500 E

548 8550 E

548 8600 E

548 8650 E

548 8700 E

548 8750 E

548 8800 E

548 8850 E

548 8900 E

548 8950 E

548 9000 E

548 9050 E

548 9100 E

548 9150 E

548 9200 E

548 9250 E

548 9300 E

548 9350 E

548 9400 E

548 9450 E

548 9500 E

548 9550 E

548 9600 E

548 9650 E

548 9700 E

548 9750 E

548 9800 E

548 9850 E

548 9900 E

548 9950 E

548 10000 E

548 10050 E

548 10100 E

548 10150 E

548 10200 E

548 10250 E

548 10300 E

548 10350 E

548 10400 E

548 10450 E

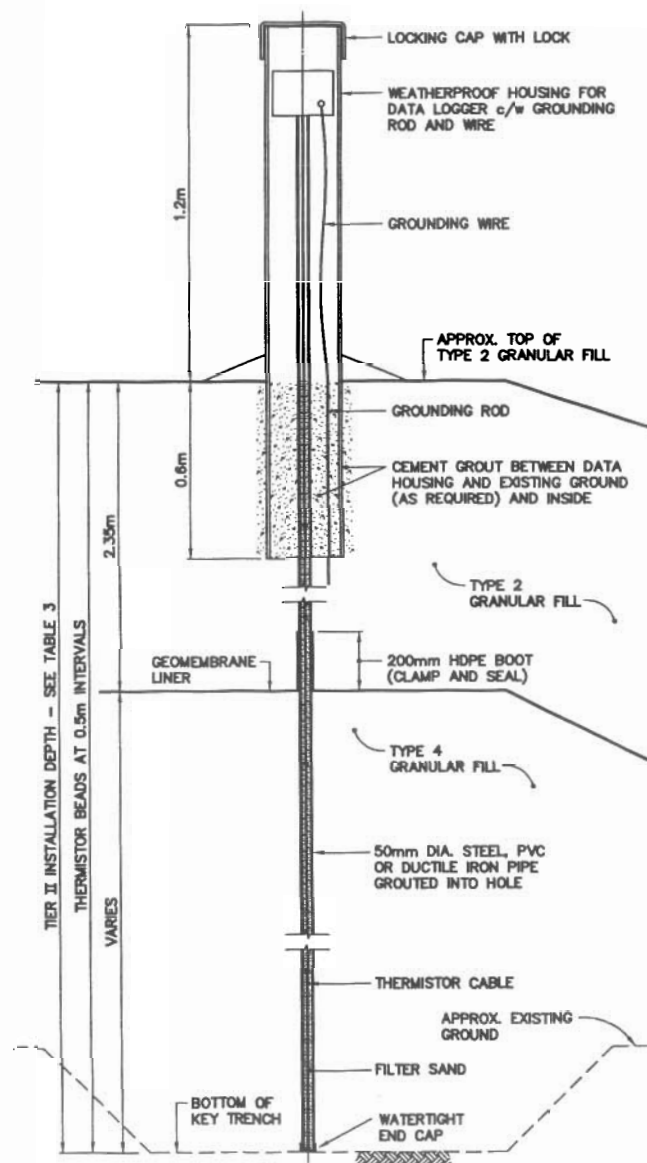
548 10500 E

548 10550 E

548 10600 E

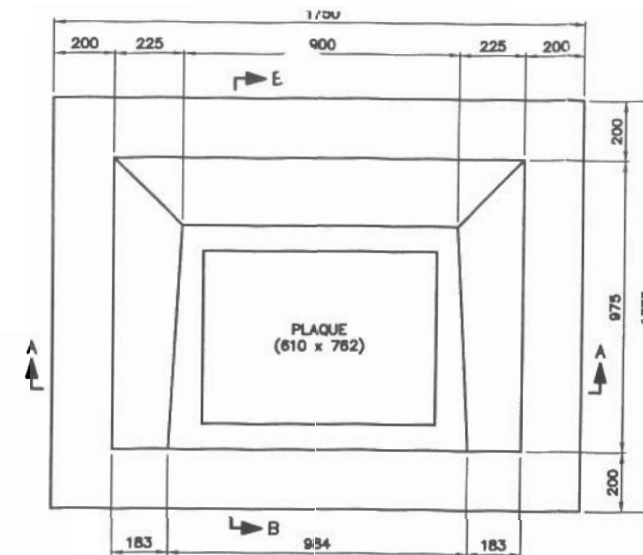
TABLE 3 VERTICAL THERMISTOR INSTALLATION		
INSTRUMENT No.	APPROXIMATE DEPTH BELOW FINAL GRADE (m)	COMMENTS
TIER II DISPOSAL FACILITY		
VT-1	7.5	INSTALL THROUGH CENTERLINE BERM TO INVERT OF KEY TRENCH
VT-2	5.0	INSTALL TO 1.0m ABOVE ELEVATION OF BOTTOM LINER
VT-3	5.0	INSTALL TO 1.0m ABOVE ELEVATION OF BOTTOM LINER
VT-4	7.5	INSTALL THROUGH CENTERLINE BERM TO INVERT OF KEY TRENCH

NOTE:
INSTALL ALL THERMISTOR STRINGS TO BASE LINER UNLESS NOTED OTHERWISE.

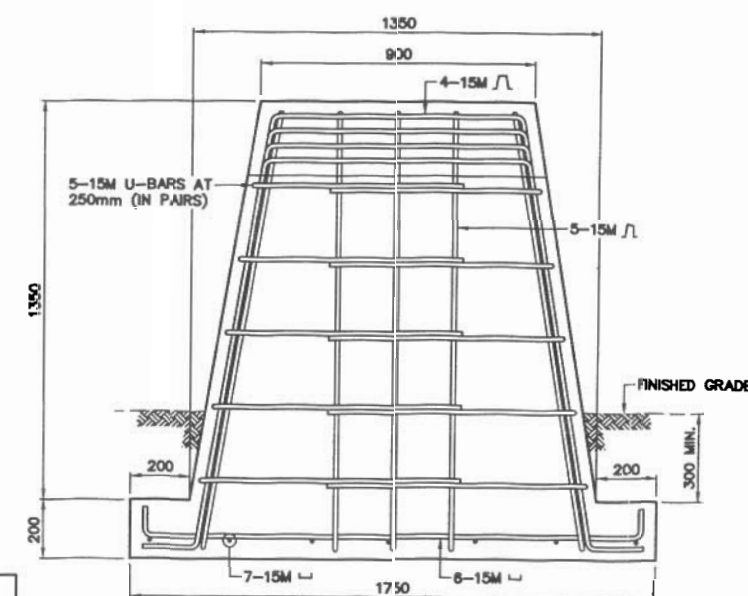


TYPICAL THERMISTOR INSTALLATION - TIER II
N.T.S.

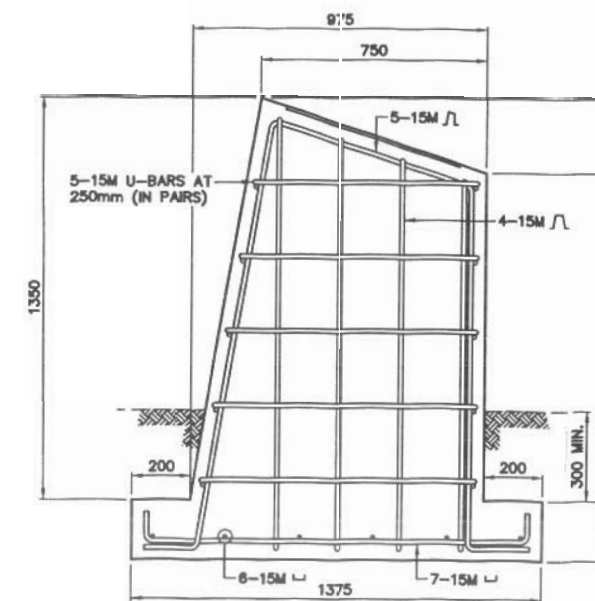
- COMMEMORATIVE PLAQUE BASE CONSTRUCTION NOTES:
1. PROVIDE TO SITE ALL EQUIPMENT, MATERIALS, TOOLS, TEMPORARY FORMS AND ASSOCIATED EXCAVATION AND/OR BACKFILL TO CONSTRUCT THE COMMEMORATIVE PLAQUE BASE, INCLUDING 30 MPa CONCRETE AND 15M STEEL REBAR.
 2. COMMEMORATIVE PLAQUE BASE CAN BE CONSTRUCTED ON SITE OR PRE-CAST AND DELIVERED TO SITE.
 3. OWNER TO SUPPLY COMMEMORATIVE PLAQUE.



PLAN

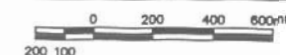


SECTION A-A



SECTION B-B

COMMEMORATIVE PLAQUE BASE DETAIL (SEE NOTE 4)



General Notes:

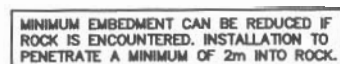
1. ALL DIMENSIONS ARE IN MILLIMETRES UNLESS NOTED OTHERWISE.
2. APPROXIMATE LOCATIONS FOR INSTRUMENTATION ARE SHOWN ON THE DRAWINGS. ALL LOCATIONS TO BE FIELD CONFIRMED BY THE ENGINEER.
3. MOUND FILL AROUND CASING TO PROMOTE DRAINAGE AWAY FROM INSTRUMENT.
4. COMMEMORATIVE PLAQUE BASE TO BE LOCATED ON A GRANULAR PAD IN A LOCATION DETERMINED BY THE ENGINEER.

Legend:

No.	DATE	REVISION	REVISION
DRAFT			
SCALE - ÉCHELLE: AS SHOWN PROJECT - PROJET: CAM-2 GLADMAN POINT DEW LINE CLEAN UP © COPYRIGHT: HER MAJESTY THE QUEEN IN RIGHT OF CANADA 2002, AS REPRESENTED BY THE MINISTER OF NATIONAL DEFENCE.			
TRADE - MÉTIER: SITING	DATE: 2002-		
SUBJECT - SUJET: MISCELLANEOUS DETAILS			
DESIGNED: BWF	CONCURRENCE - ASSÉNTIMENT: DES OFF: AGENT CONC		
DRAWN: CAE/AC	REVIEWED: RRM		
CHECKED: RRM	COORDINATION: SMS		
DWG. NO. - DESSIN NO.: H-C36/1-9101-121			

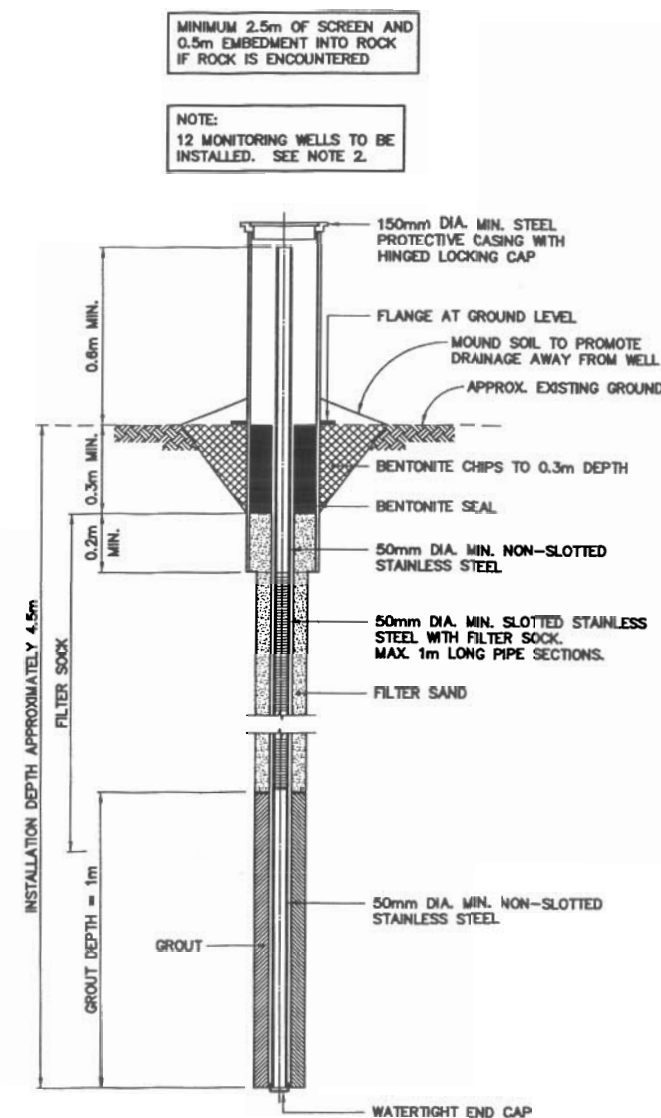
1. ALL DIMENSIONS ARE IN MILLIMETRES UNLESS NOTED OTHERWISE.
2. APPROXIMATE LOCATIONS FOR INSTRUMENTATION ARE SHOWN ON THE DRAWINGS. ALL LOCATIONS TO BE FIELD CONFIRMED BY THE ENGINEER.

Legend:



NOTE:
4 PERMANENT SURVEY CONTROL MONUMENTS
TO BE INSTALLED. SEE NOTE 2.

TYPICAL PERMANENT SURVEY
CONTROL MONUMENT (BENCHMARK)
N.T.S.



TYPICAL MONITORING WELL/
BACKGROUND MONITORING WELL
N.T.S.

DRAFT

Uma 32

SCALE - ECHELLE AS SHOWN

PROJECT - PROJCT
CAM-2 GLADMAN POINT

DEW LINE CLEAN UP

© COPYRIGHT
HER MAJESTY THE QUEEN IN RIGHT OF
CANADA 2002, AS REPRESENTED BY THE
MINISTER OF NATIONAL DEFENCE.

TRADE - METIER	SITING	DATE
		2002-12
SUBJECT - SUJET		

MISCELLANEOUS DETAILS SH.

PRODUCTION		CONCURRENCE - ASSESSMENT	
DESIGNED ETUDE	BWF		DES OFF AGENT CONCEPT
DRAWN DESSINE	CAE/IC		SECT HD CHIEF SECT
CHECKED VERIFIE	RRM		DES MOR GEST CONCEPT
COORDINATION SMS		REVIEWED - REVU	

DWG. NO. - DESSIN NO.
H-G36/1-9101-122

General Notes:

1. ALL STRUCTURES DESIGNATED FOR DEMOLITION TO BE DEMOLISHED TO TOP OF CONCRETE FOUNDATIONS UNLESS NOTED OTHERWISE.
2. ALL POLES, INCLUDING GUY WIRES, TO BE REMOVED UNLESS NOTES OTHERWISE.
3. ALL DIMENSIONS ARE IN METRES UNLESS NOTED OTHERWISE.
4. ALL SHORT RANGE RADAR (SRR) FACILITIES ARE CURRENTLY OPERATIONAL AND ARE NOT TO BE DISTURBED. THESE INCLUDE ALL BUILDINGS, STRUCTURES, ELECTRICAL POWER CABLES, FUEL STORAGE TANKS AND PIPELINES NOT SCHEDULED FOR DEMOLITION.

Legend:

- TO BE DEMOLISHED
- CONCRETE PAD TO BE REGRADED
- BODY OF WATER
- UTILITY POLE
- POL LINE
- POWER/COMMUNICATION CABLE
- SEWAGE OUTFALL LINE

No.	DATE	REVISION	REVISION

DRAFT

UMA **SCALE** 20 10 0 20 40 60
SCALE - ECHELLE

PROJECT - PROJET
CAM-2 GLADMAN POINT

DEW LINE CLEAN UP

© COPYRIGHT
HER MAJESTY THE QUEEN IN RIGHT OF
CANADA 2001, AS REPRESENTED BY THE
MINISTER OF NATIONAL DEFENCE.

TRADE - METIER
STRUCTURAL DATE
2002-12-

SUBJECT - SUJET

**AIRSTRIp AREA AND BEACH AREA
DEMOLITION SITE PLANS**

PRODUCTION	CONCURRENCE - ASSESSMENT
DESIGNED ETUDE ANP/AMS	DES OFF AGENT CONCEPT
DRAWN DESSINE RN/AM	SECT HD CHIEF SECT
CHECKED VERIFIE RRM	DES MOR GEST CONCEPT
COORDINATION SMS	REVIEWED - REVU

DWG. NO. - DESSIN NO.
H-G36/1-9101-202

Canada

