



Photograph NH-1. Looking SW towards NE corner of Landfill. ↑



Photograph NH-2. Looking W along the toe of the N side of NE corner. ↑



Photograph NH-3. Looking W along crest from NE corner. ↑



Photograph NH-4. Looking S along W side of LF from 10m NW of NW corner. ↑



Photograph NH-5. Looking S along crest from NW corner. Fine cracks that were observed last year cannot be seen. ↑



Photograph NH-6. Panoramic looking NE from adjacent to MW-8 looking to SW corner of LF. ↑



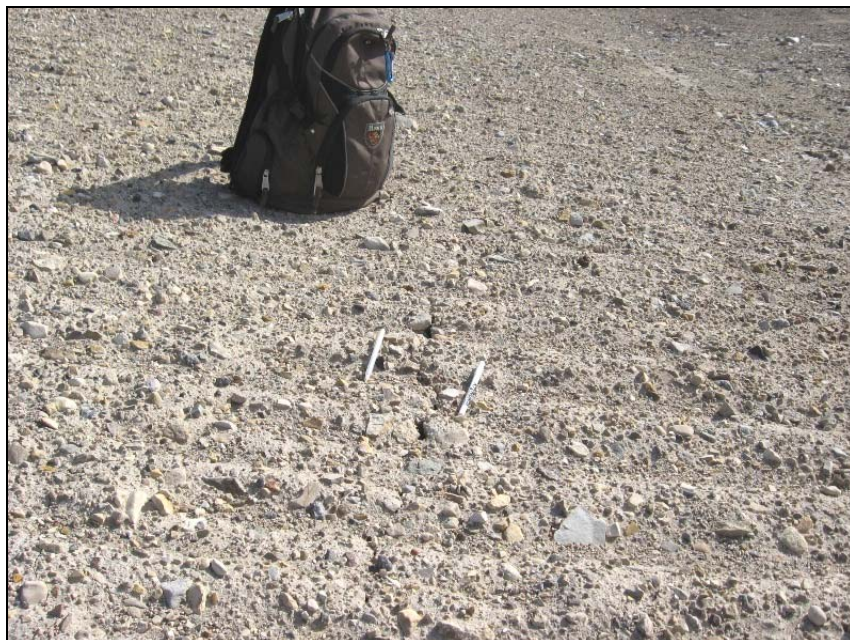
Photograph NH-7. Looking ENE along toe of S slope from SW corner of LF. Backpack located next to old in-filled crack. ↑



Photograph NH-8. Looking ENE along crest from SW top of LF. ↑



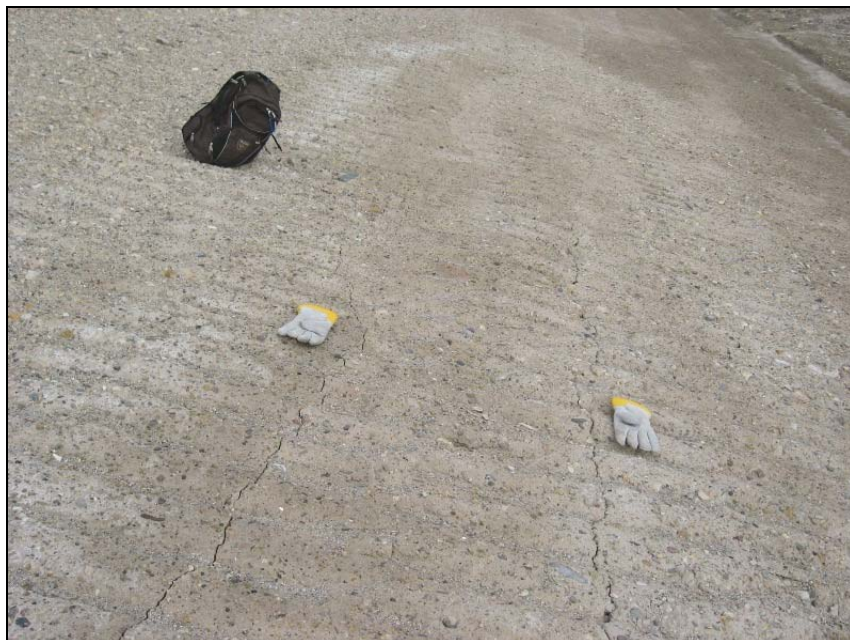
Photograph NH-9. Close-up of crack from last year, partially in-filled with no sign of recent movement (gloves and pen for scale). Splays and offset by up to 1m, always fine. ↑



Photograph NH-10. Close-up, portion of lower crack along W toe that was observed last year. Most has been in-filled and cannot be seen. ↑



Photograph NH-11. Looking ENE along slope along old, partially in-filled crack (between gloves). ↑



Photograph NH-12. Looking ENE at parallel cracks (old). ↑



Photograph NH-13. Looking ENE at parallel cracks (old) approaching SE corner. Area of minor (self armoured) surficial erosion visible in background. Zone of erosion appears unchanged from the time of the 2007 inspection. ↑



Photograph NH-14. Close-up, crack becomes narrow at SE corner. ↑



Photograph NH-15. Looking N along E toe from SE corner. ↑



Photograph NH-16. Looking N along crest from SE corner. ↑



Photograph NH-17. Minor crack along crest (old) looking N. ↑



Photograph NH-18. Crack along E crest looking N. Similar to last year. Gloves on either side of crack. ↑



Photograph NH-19. Following crack on crest. Looking N approaching NE corner. ↑



Photograph NH-20. Following crest crack to NE corner. Crack largely in-filled as it rounds corner. Faintly visible from about 30m W along N crest. ↑



Photograph NH-21. Representative picture of crack as it rounds corner and turns W. Gloves for scale on either side of in-filled crack. ↑



Photograph NH-22. Representative crack along E slope looking N. ↑



Photograph NH-23. Following crack on E slope looking N. ↑



Photograph NH-24. Looking NW from SE corner scanning L to R. Note approaching snow! ↑