



Photo 1: View north, Station Area.



Photo 2: View north at Lobe 3, Borrow Area North Landfill.





Photo 3: View northeast at Lobe 5, Borrow Area North Landfill.



Photo 4: View west, Northeast Landfill.





Photo 5: View northeast, Northeast Landfill.



Photo 6: View north, Main Landfill.





Photo 7: View south from entrance road, Main Landfill.



Photo 8: View E, Station East Landfill in background.





Photo 9: View east, Station East Landfill from gravel pile.

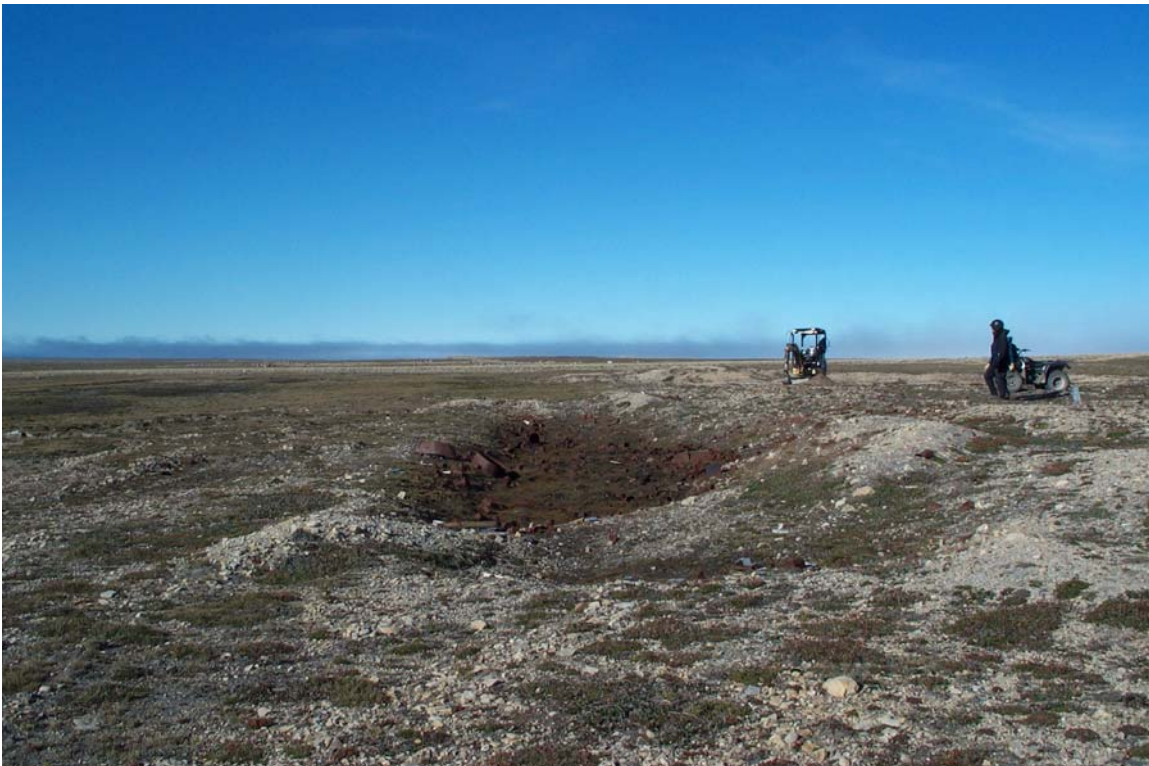


Photo 10: View northeast along north side of Station West Landfill.





Photo 11: View northeast at Lobe 1, Southeast Landfill.



Photo 12: View north across Lobe 1, USAF Landfill.





Photo 13: View southeast from Beach POL at East Landing Landfill.



Photo 14: View southwest at drainage through East Landing Landfill.





Photo 15: View northwest along toe, East Landing Landfill.



Photo 16: View southeast along toe, East Landing Landfill.



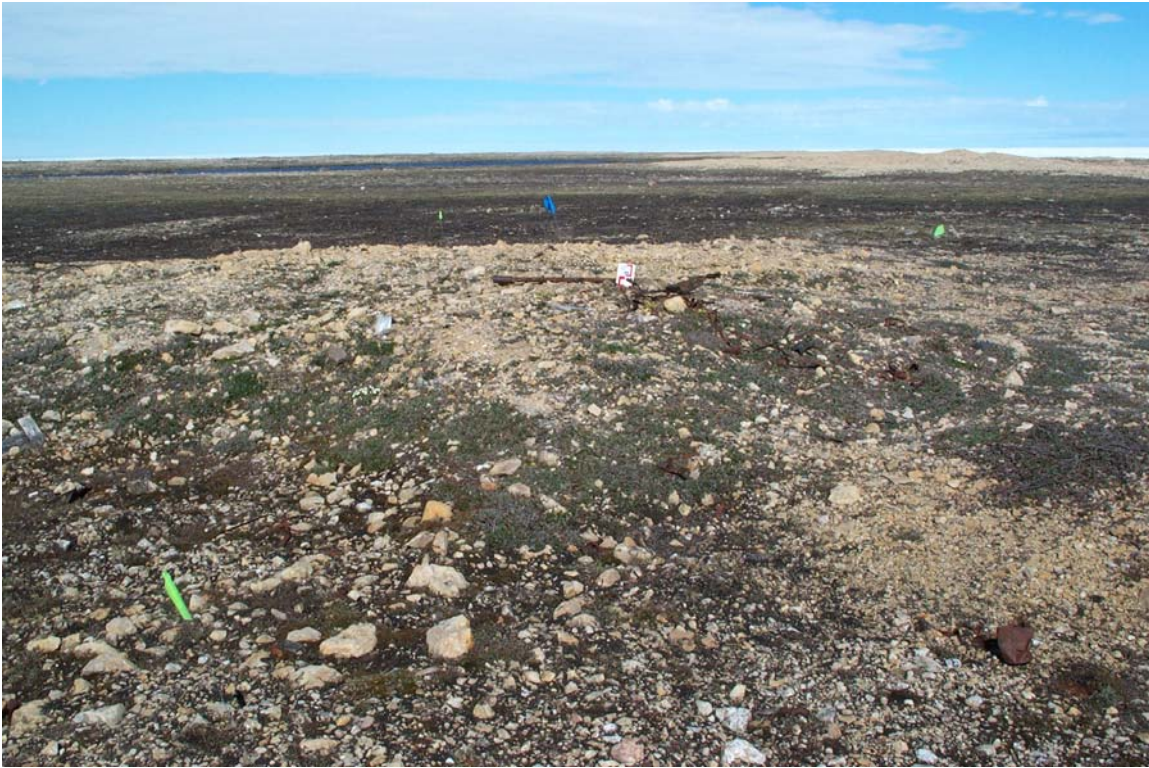


Photo 17: View northeast at Lobe 1, Northeast Debris Area.



Photo 18: View south at Lobe 1, Southwest Debris Area.





Photo 19: View northwest, Airstrip North Debris Area.



Photo 20: View north at metal debris in berm, Beach POL Debris Area.





Photo 21: View northeast at partially buried metal in berm, Beach POL Debris Area.



Photo 22: View west at stained area, West Landing Debris Area.





Photo 23: View northeast, West Landing Debris Area (Lobe 2).



Photo 24: View north at Lobe 1, East Point Debris Area.





Photo 25: View northwest, East Point Debris Area.



Photo 26: View east, South Airstrip Debris Area.





Photo 27: View southwest at Lobe 1, Station South Debris Area.



Photo 28: View northeast at Lobe 3, Station South Debris Area.





Photo 29: View west at scattered surface debris, Site Debris No.4.



Photo 30: View southwest at debris, Site Debris No. 18.





Photo 31: North anchor and antenna wires, Site Debris No. 39.



Photo 32: Wood crates, pallets and metal pipe frames, Site Debris No. 49.





Photo 33: View south, Garage



Photo 34: View west, Warehouse.





Photo 35: Interior of Warehouse.



Photo 36: View north, communication dishes, Module Train and Radome.





Photo 37: View west, modules 15 through 25 of Module Train.



Photo 38: Electrical Equipment Cabinets, Module 6 – Module Train.





Photo 39: Stainless steel cabinets and dishwasher, Module 14 – Module Train.



Photo 40: View south, QML storage shed.





Photo 41: Front and side view of pumphouse – Station POL.



Photo 42: View northeast from radome, water tanks.





Photo 43: Front of water tanks.



Photo 44: 6,000 gallon and 500 gallon mogas tanks along station access road.





Photo 45: View northeast, HF antenna.



Photo 46: View southwest, Air Terminal Building.





Photo 47: View south, beacon platform on apron.



Photo 48: View southwest, 6,000 gallon mogas tank at Beach.





Photo 49: side view, communications dish.



Photo 50: Front view, communications dish.



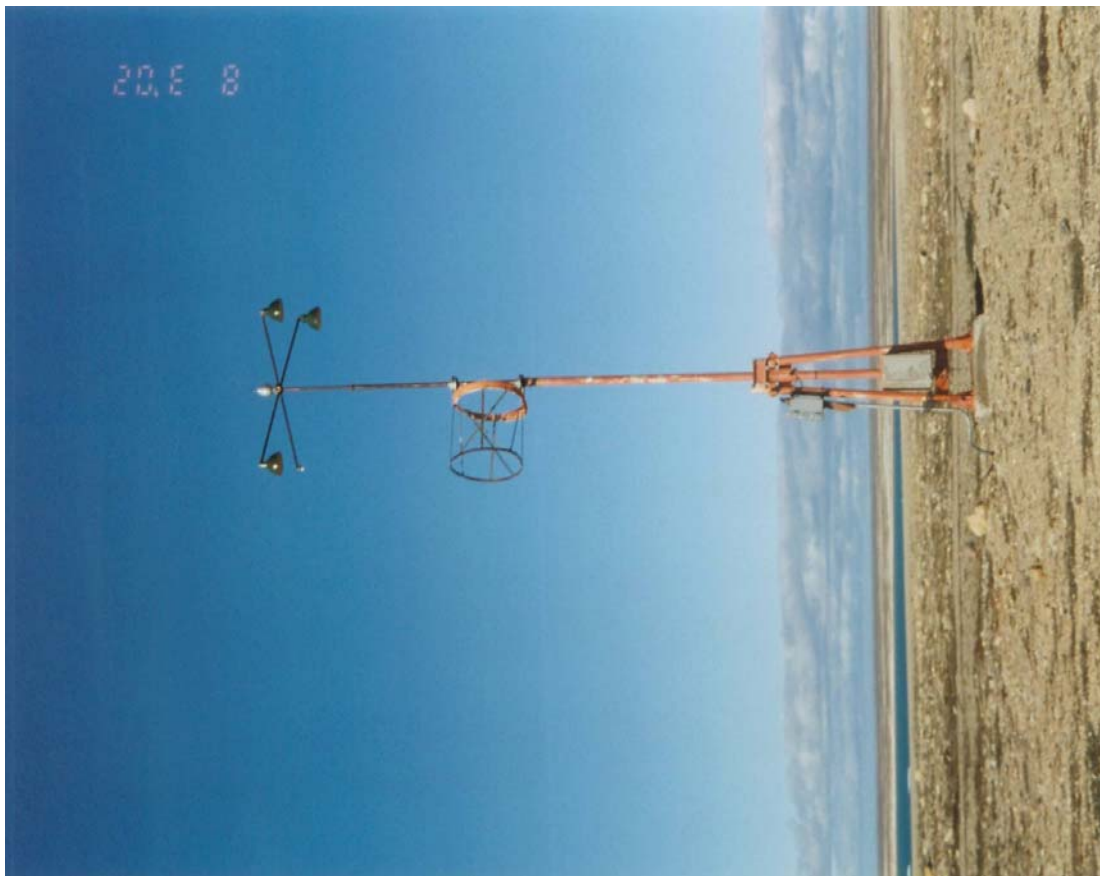


Photo 51: Windsock.



Photo 52: 65,000 gallon diesel tank (typical).