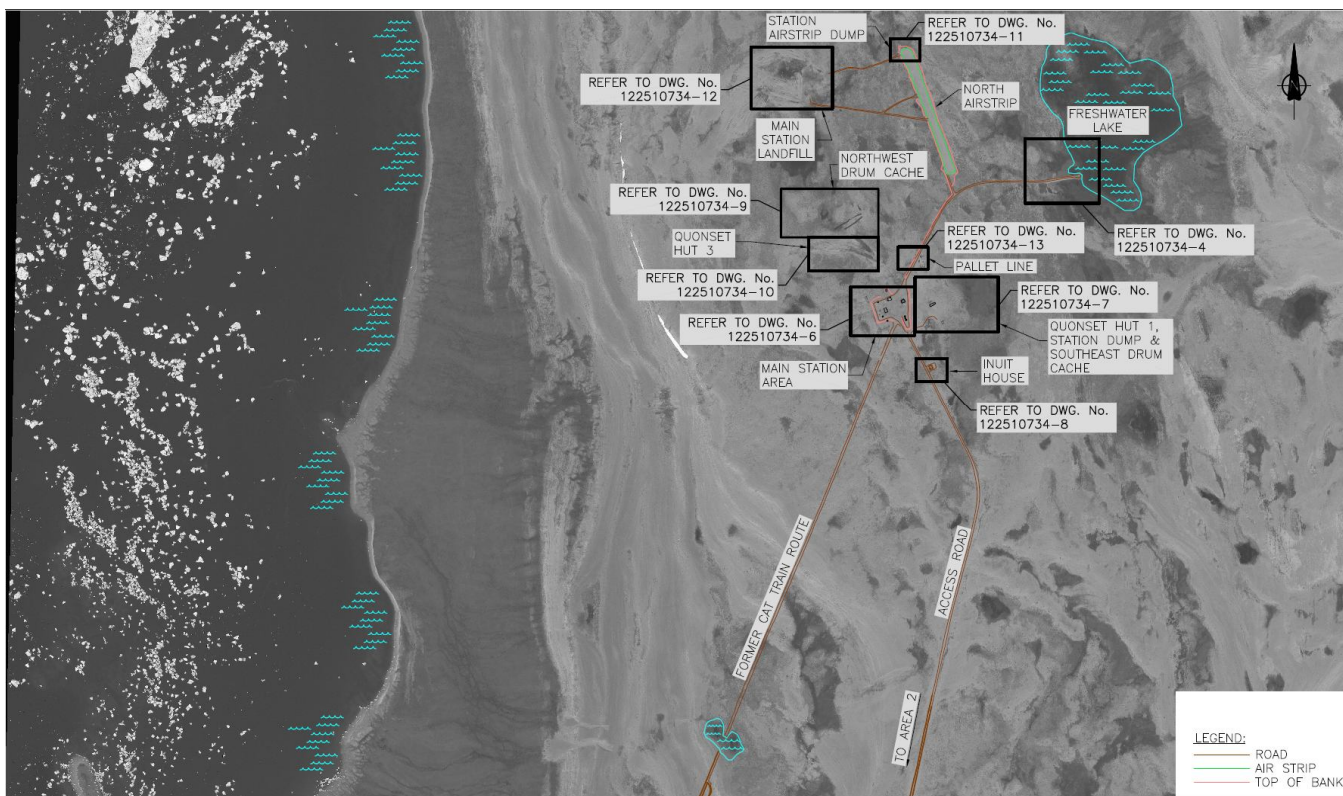




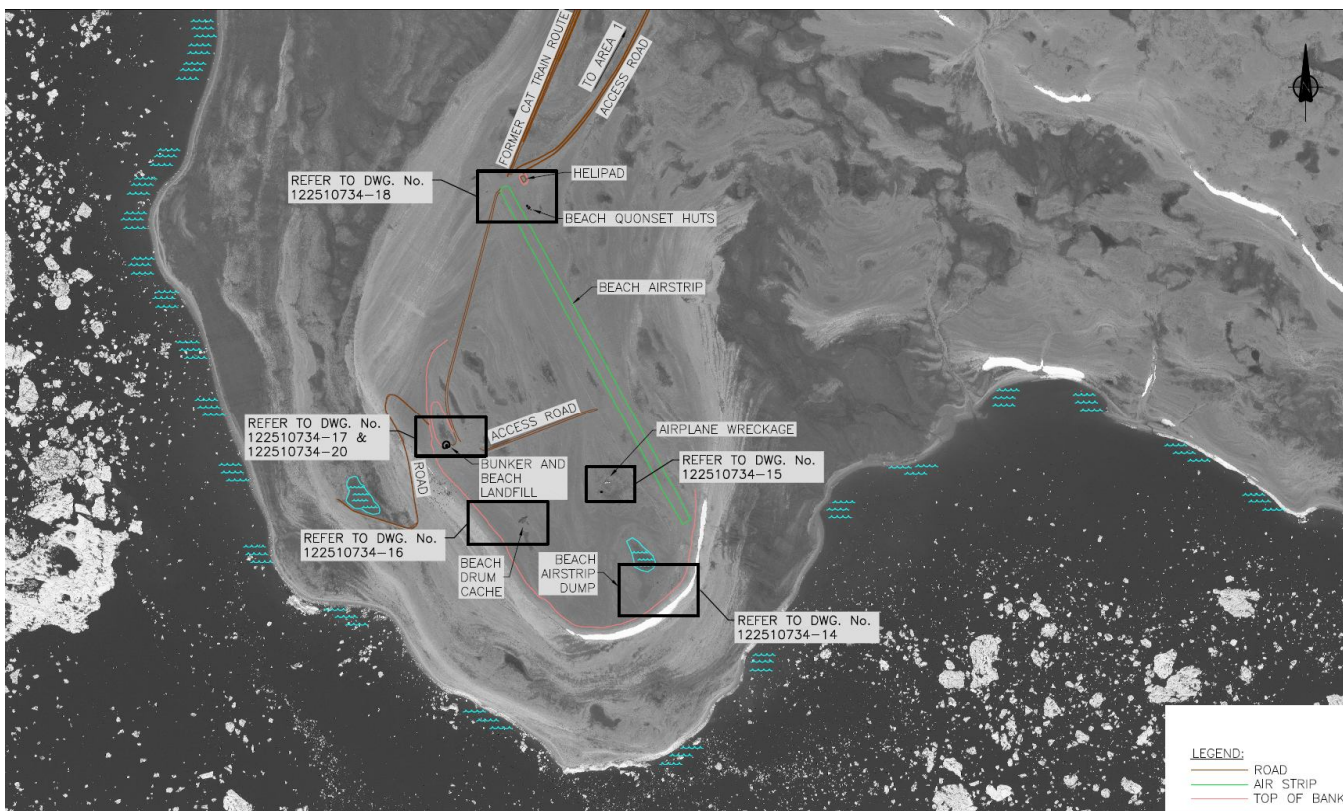
**LOCATION MAP: Keith Bay - 75 km East of Kugaaruk, NU, Canada**





### Layout Map of Area 1 (Main Station)

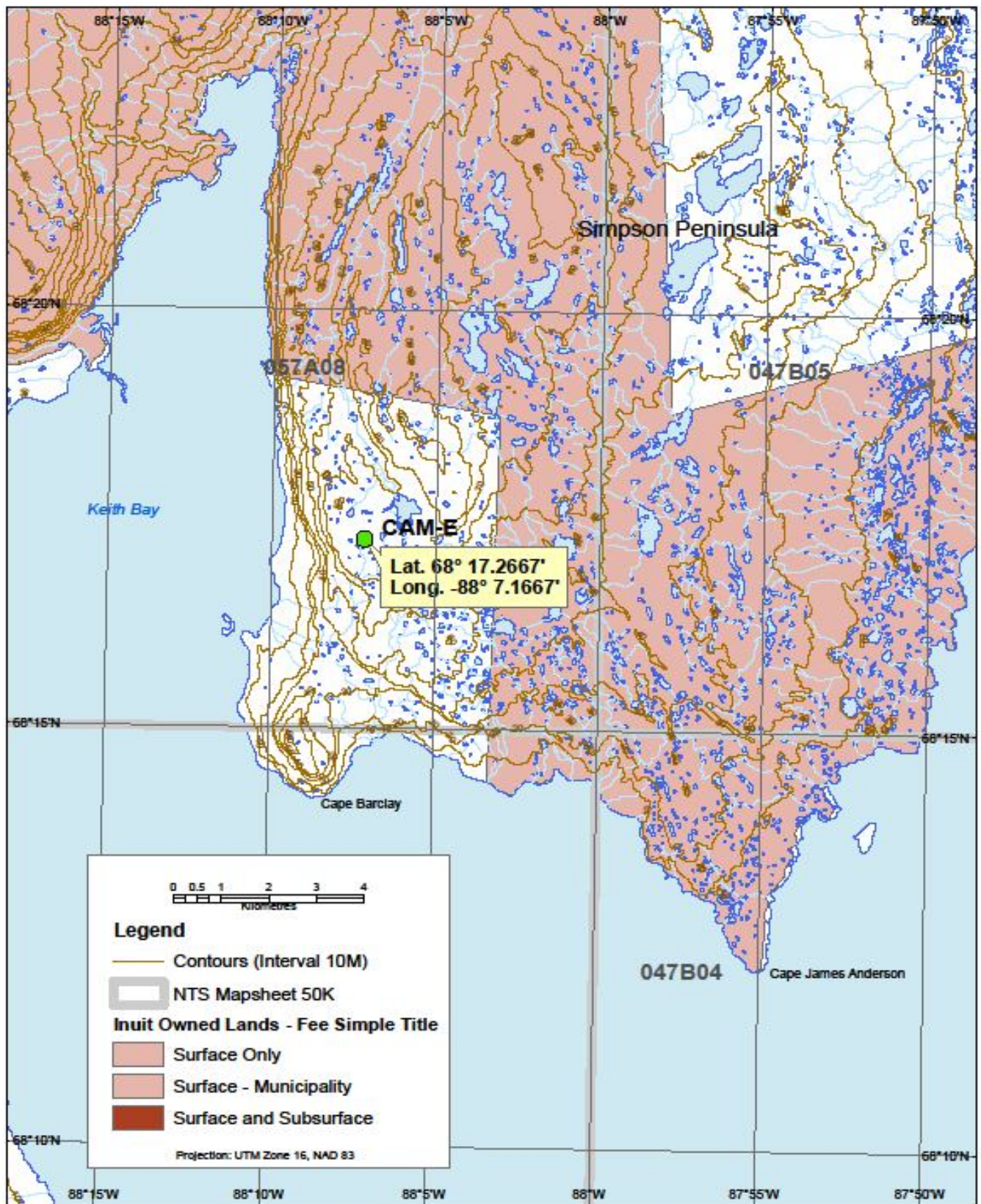
(Referred drawings and contained in the Phase III report submitted to NIRB through NPC)



### Layout Map of Area 2 (Beach Area)

(Referred drawings and contained in the Phase III report submitted to NIRB through NPC)

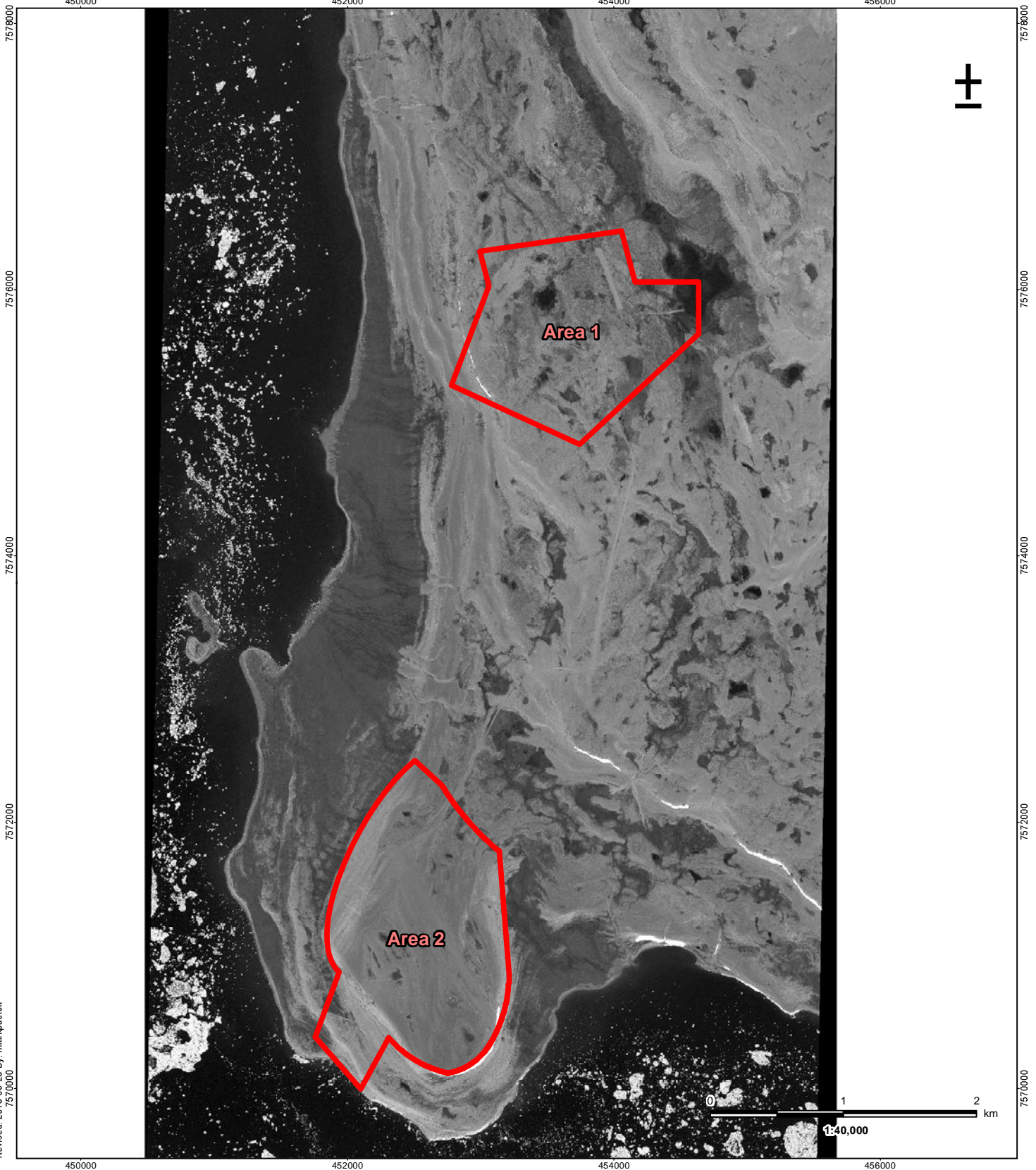




NTS Map Sheet No 057A08 (Scale: 1:50,000)




\\ed004-f06\Work\_group\01221\active\122140012\_data\_base\_mgm\m\Datasets\122510734 - Keith Bay - Public Works\Drawing\MXD\DetailedWorkplan\122510734\_DetailedWorkplan\_Fig02\_SitePlan.mxd  
Revised: 2013-05-28 By: mkrfpatrik



May 2013  
122510734



### Legend

 Area of Interest

### Notes

1. Coordinate System: NAD 1983 UTM Zone 16N
2. Imagery provided by GeoEye, Inc.

Client/Project

Public Works Government  
Services Canada  
CAM-E (Keith Bay)  
Detailed Workplan

Figure No.

2

Title

Site Plan



- Legend**
- APEC 1A
  - APEC 1B
  - APEC 1C
  - APEC 1D
  - APEC 1E
  - Area of Interest

**Notes**

1. Coordinate System: NAD 1983 UTM Zone 16N
2. Imagery provided by GeoEye, Inc.
3. APEC - Area of Potential Environmental Concern.

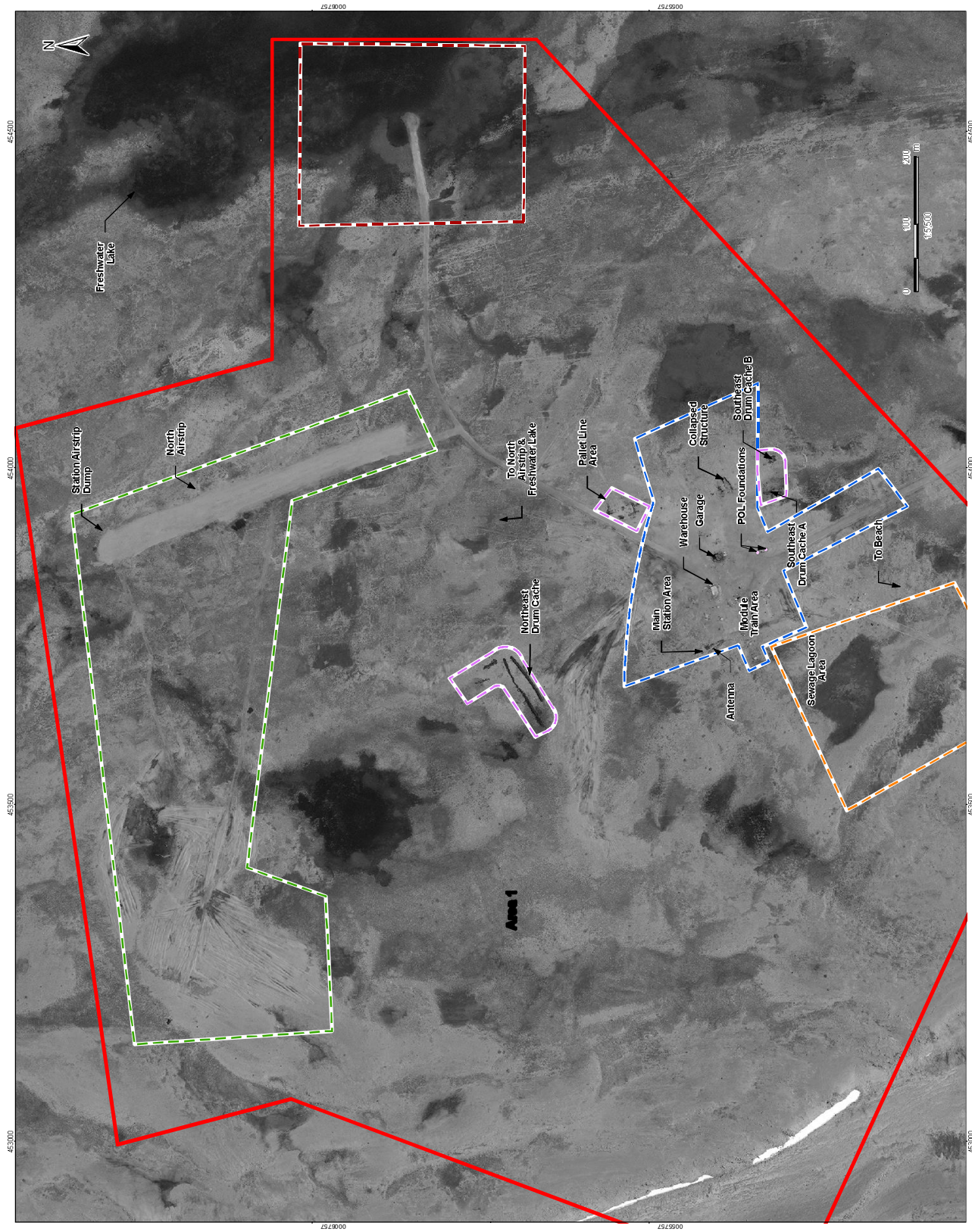


**Stantec**

Client/Project: Public Works Government Services Canada CAM-E (Keith Bay) Detailed Workplan

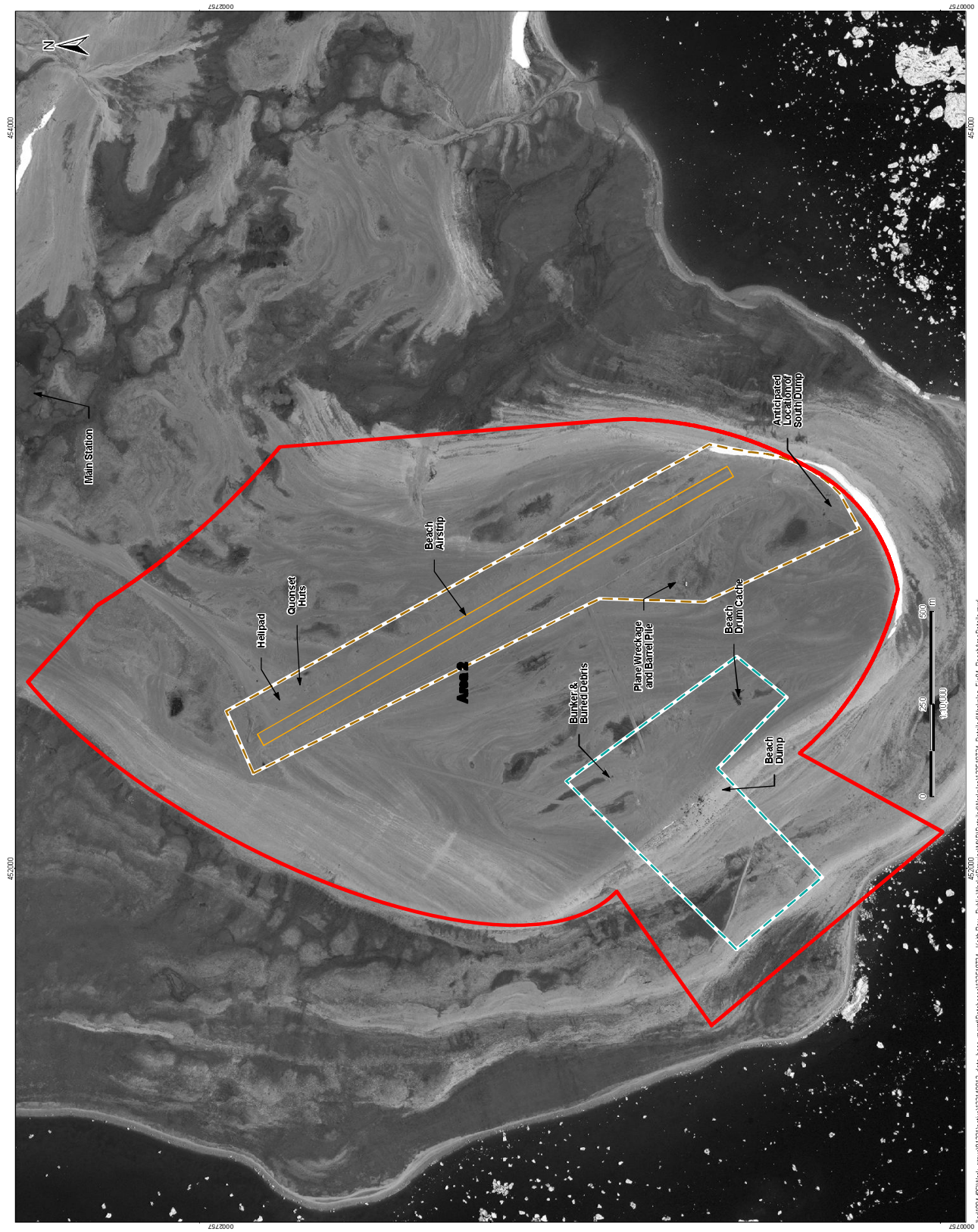
Map No: 1225/0734

Figure No: 3  
Title: Main Station Area and North Airstrip



\\004-05\Work\_group\0121\hatch\12140012\_data\_base\_rgn\01\Drawings\APEC\01225/0734\_DetailedWorkplan\_Fig03\_MainStationArea.mxd  
Renamed: 2013-05-23 By: mthgarack





### Legend

- APEC 2A
- APEC 2B
- Area of Interest
- Beach Airstrip

### Notes

- Coordinate System: NAD 1983 UTM Zone 16N
- Imagery provided by GeoEye, Inc.
- APEC - Area of Potential Environmental Concern.



Client/Project

Public Works Government  
Services Canada  
CAM-E (Keith Bay)  
Detailed Workplan

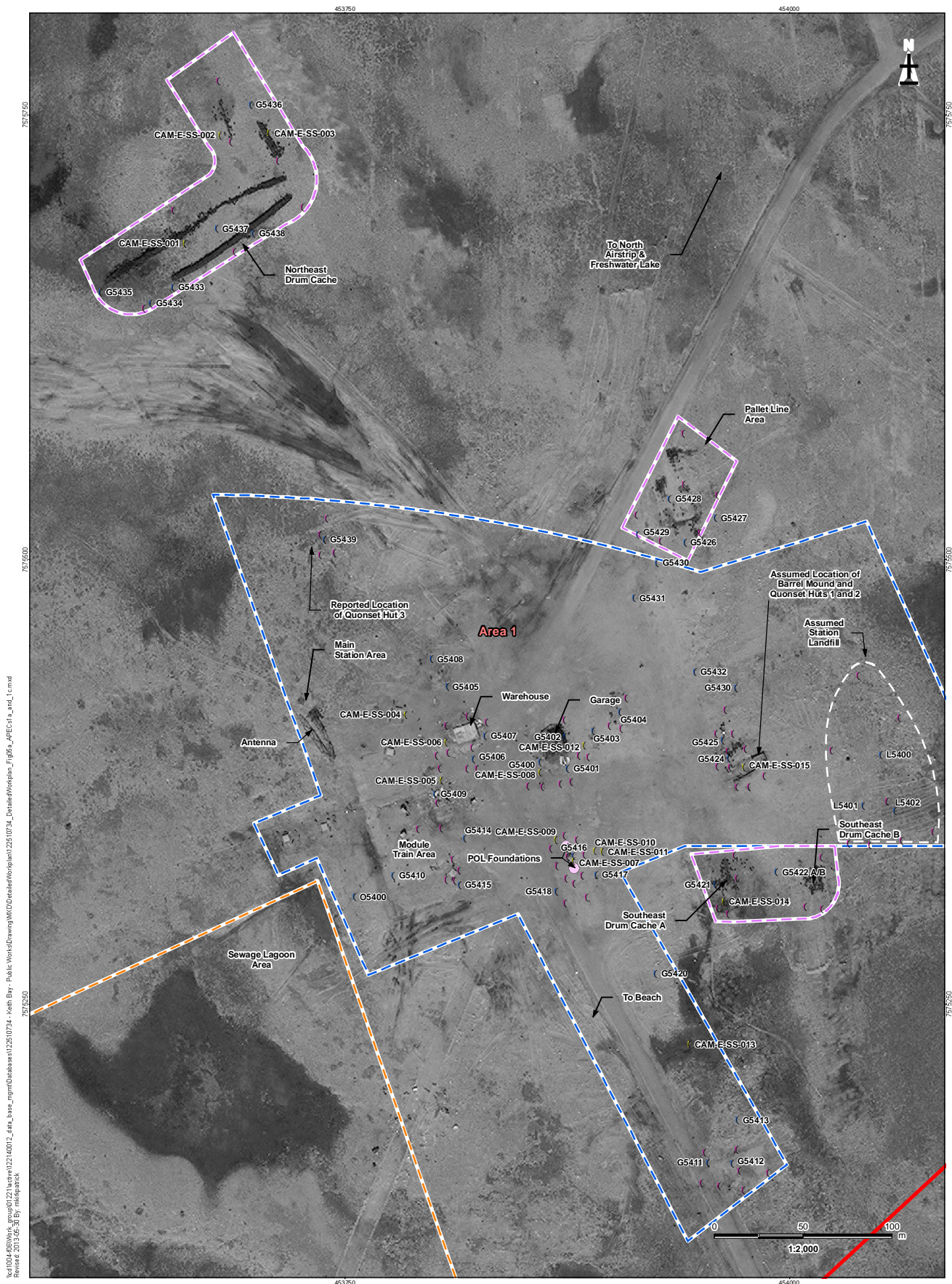
Figure No.

4

Title

Beach Area Details





\\ed1004\650\Work\_group\027\keith\12210734\_4eth Bay - Public Works\Drawings\MCDetailedWorkplan\12210734\_Details\Workplan\_Fig5a\_APECs1a\_and\_1c.mxd  
Revised: 2013.05.30 By: miki@stantec



## Legend

- Approximate Location of Soil Sample Collected by RRM/ESG, 1994
- Approximate Location of Soil Sample Collected by WESA, 2011
- Anticipated Soil Sample Location
- APEC 1A
- APEC 1B
- APEC 1C
- Area of Interest

## Notes

1. Coordinate System: NAD 1983 UTM Zone 16N
2. Imagery provided by GeoEye, Inc.
3. APEC - Area of Potential Environmental Concern.

Client/Project  
Public Works Government  
Services Canada  
CAM-E (Keith Bay)  
Detailed Workplan

Figure No.

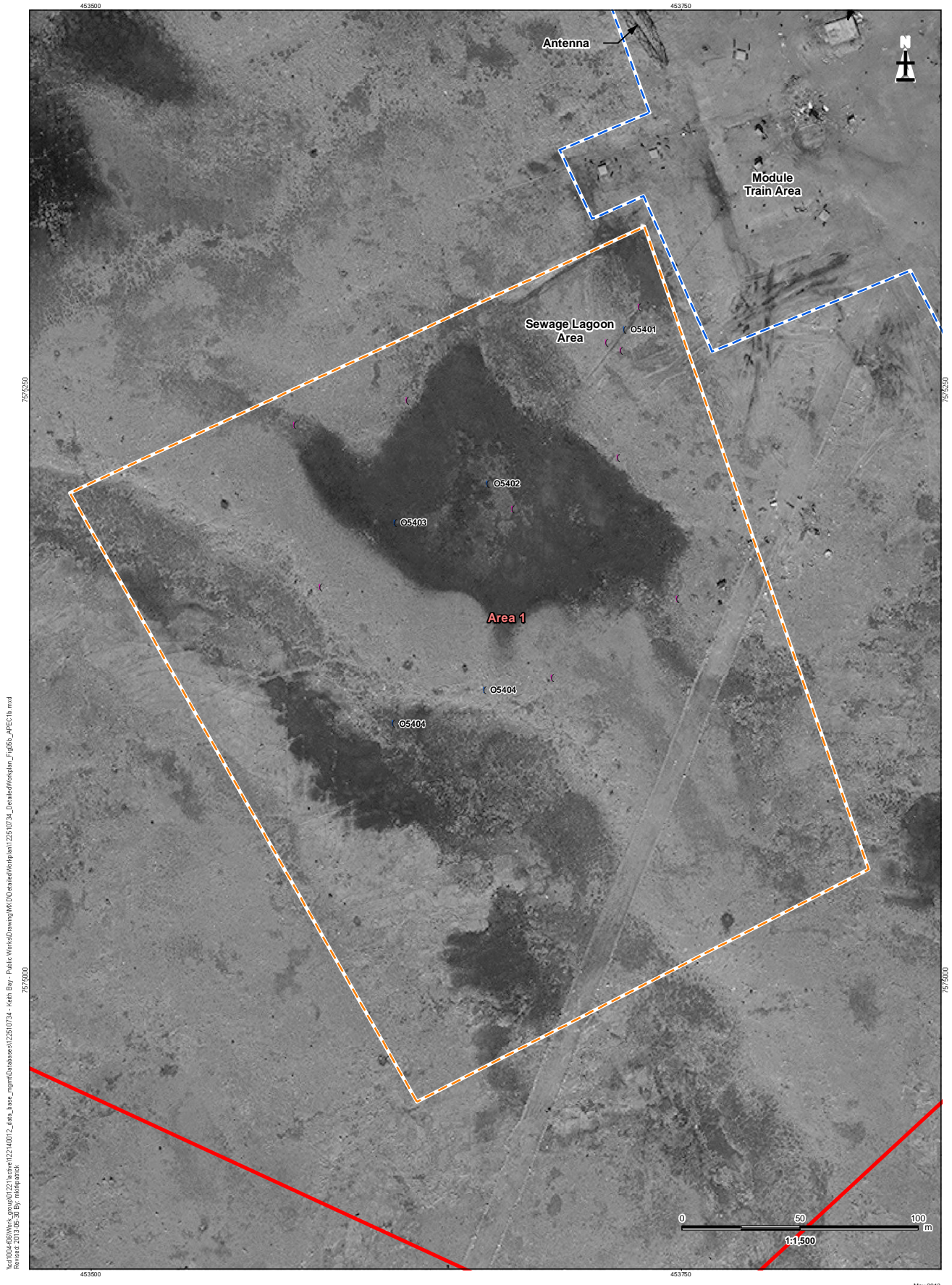
5a

Title

**APECs 1A and 1C Sampling Locations**

May 2013  
122610734





\\ed1004-650\work\_group\0271\work\12214\0012\_data\_base\_rpt\Drawings\DetailedWorkplan\1225\0734\_Keith Bay - Public Works Drawing\MT\DetailedWorkplan\_Fig5b\_APEC1b.mxd  
Revised: 2013.05.30 By: miki@stantec



### Legend

- ( Approximate Location of Soil Sample Collected by RRM/ESG, 1994
- ( Anticipated Soil Sample Location
- [---] APEC 1A
- [---] APEC 1B
- [---] Area of Interest

### Notes

1. Coordinate System: NAD 1983 UTM Zone 16N
2. Imagery provided by GeoEye, Inc.
3. APEC - Area of Potential Environmental Concern.

Client/Project  
Public Works Government  
Services Canada  
CAM-E (Keith Bay)  
Detailed Workplan

Figure No.

5b

Title

**APEC 1B Sampling  
Locations**

May 2013  
122510734









- Legend**
- Anticipated Sediment Sampling Location
  - Anticipated Surface Water Sampling Location
  - ▭ APEC 1E
  - ▭ Area of Interest

- Notes**
1. Coordinate System: NAD 1983 UTM Zone 16N
  2. Imagery provided by GeoEye, Inc.
  3. APEC - Area of Potential Environmental Concern.



**Stantec**

Client/Project

Public Works Government  
Services Canada  
CAVE-E (Keith Bay)  
Detailed Workplan

Figure No.

5d

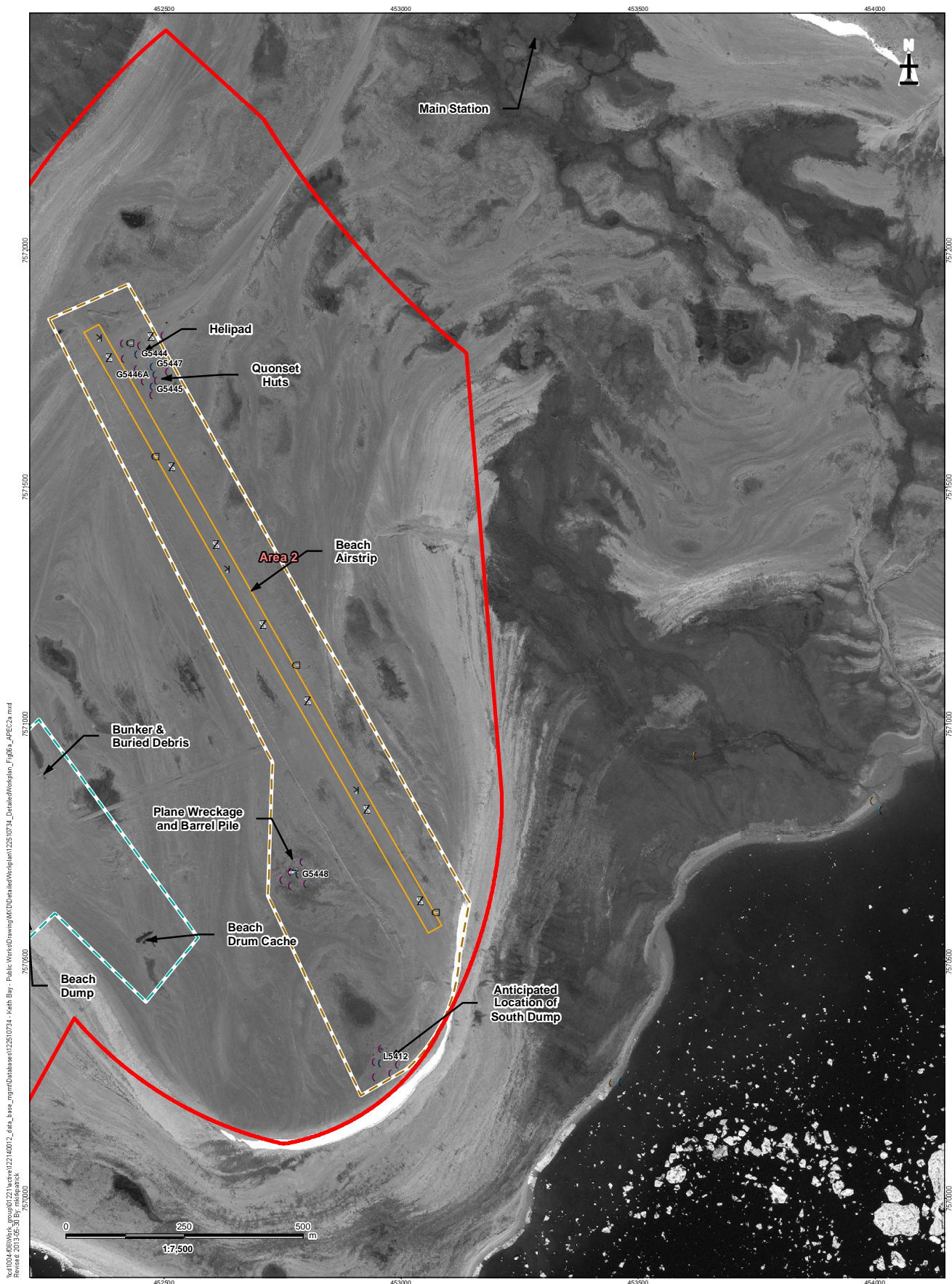
Title

**APEC 1E Sampling Locations**

Map No.  
1225.0734

\\s004-05\work\_group\0121\ba\1225.0734\_data\_mgm\Drawings\APEC\DetailedWorkplan\Fig5d\_APEC1E.mxd  
Revised: 2013-05-29 By: miki@stantec.com





## Legend

- ( ) Approximate Location of Soil Sample Collected by RRM/ESG, 1994
- ( ) Anticipated Soil Sample Location
- ( ) Anticipated Sediment Sampling Location
- ( ) Anticipated Surface Water Sampling Location
- X Proposed Hand Auger Location
- Proposed Test Pit Location
- Z Proposed DCP Test Location
- APEC 2A
- APEC 2B
- Area of Interest
- Beach Airstrip

## Notes

1. Coordinate System: NAD 1983 UTM Zone 16N
2. Imagery provided by GeoEye, Inc.
3. APEC - Area of Potential Environmental Concern.

Client/Project  
Public Works Government  
Services Canada  
CAM-E (Keith Bay)  
Detailed Workplan

Figure No.

6a

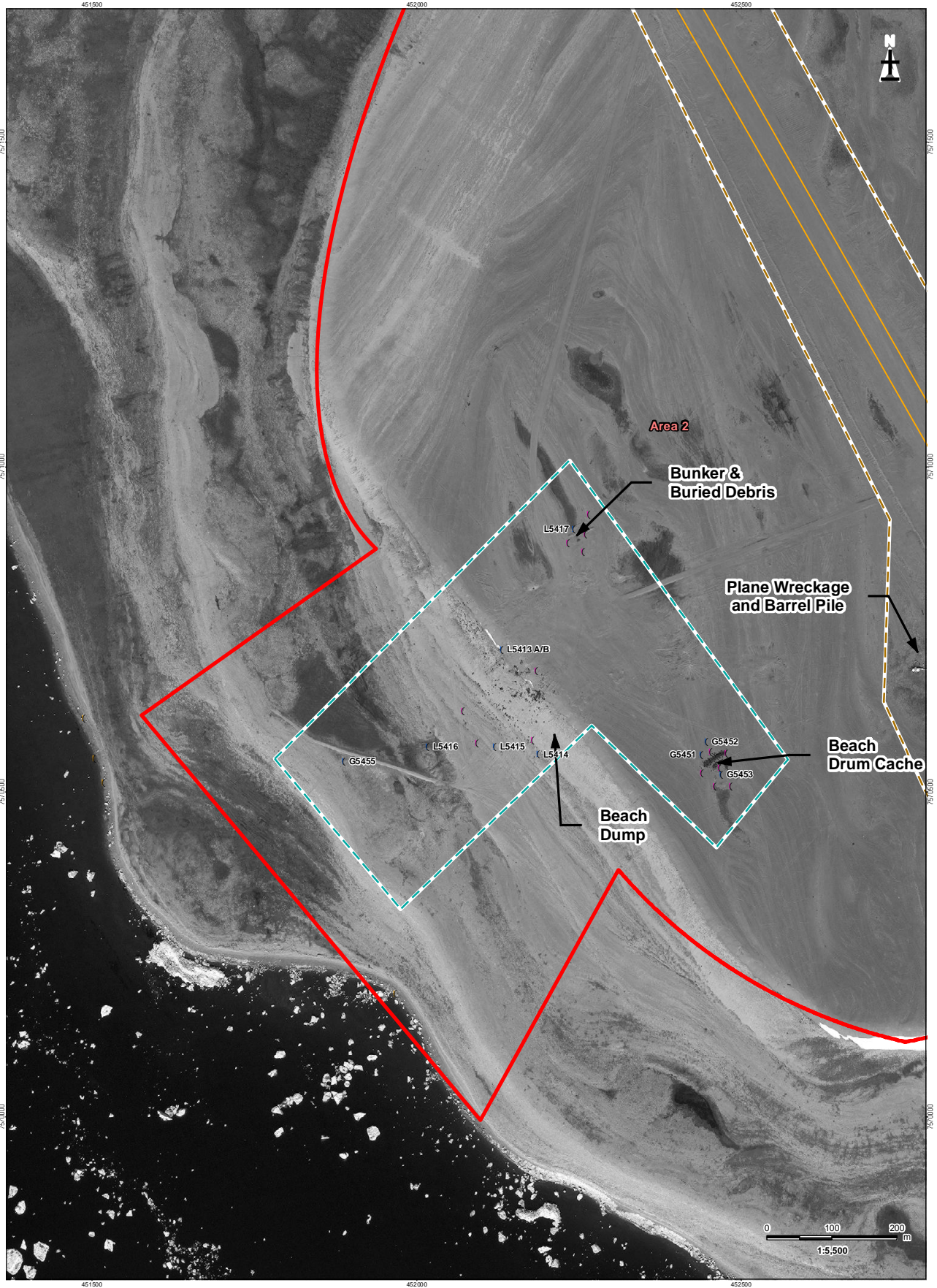
Title

## APEC 2A Sampling Locations

May 2013  
122610734



\\ed1004\650\Work\_group\0027\keith\122140012\_data\_base\_report\Drawings\Map\Detailed\Workplan\12250734\_Details\Workplan\_Fig6b\_APEC2b.mxd  
Revised: 2013.05.31 By: miki@stantec



### Legend

- ( Approximate Location of Soil Sample Collected by RRM/ESG, 1994
- ( Anticipated Soil Sample Location
- ( Anticipated Sediment Sampling Location
- ( Anticipated Surface Water Sampling Location
- APEC 2A
- APEC 2B
- Area of Interest
- Beach Airstrip

### Notes

1. Coordinate System: NAD 1983 UTM Zone 16N
2. Imagery provided by GeoEye, Inc.
3. APEC - Area of Potential Environmental Concern.

Client/Project  
Public Works Government  
Services Canada  
CAM-E (Keith Bay)  
Detailed Workplan

Figure No.

6b

Title

**APEC 2B Sampling  
Locations**

May 2013  
12250734