

VERTICAL GROUND TEMPERATURE CABLE INSTALLATION

INSTRUMENT NO.	APPROXIMATE DEPTH BELOW FINAL GRADE (m)	COMMENTS
UPPER SITE LANDFILL		
VT-6	2.7	LOCATED ON PLATEAU OF LANDFILL
VT-9	2.5	LOCATED ON PLATEAU OF LANDFILL

VERTICAL GROUND TEMPERATURE CABLE WITH PIEZOMETER INSTALLATION

INSTRUMENT NO.	APPROXIMATE DEPTH BELOW FINAL GRADE (m)	COMMENTS
UPPER SITE LANDFILL		
VF-5	4.0	NO PIEZOMETER REQUIRED
VF-7	4.0	NO PIEZOMETER REQUIRED
VF-8/P/8	4.0	INSTALL PIEZOMETER TIP BELOW LINER
VF-10/P/10	5.0	INSTALL PIEZOMETER TIP BELOW LINER
VF-11/P/11	4.0	INSTALL PIEZOMETER TIP BELOW LINER

VERTICAL GROUND TEMPERATURE CABLE INSTALLATION

INSTRUMENT NO.	APPROXIMATE DEPTH BELOW FINAL GRADE (m)	COMMENTS
TIER II DISPOSAL FACILITY		
VT-1	5.0	INSTALL THROUGH CENTRE LINE OF BERM TO INVERT OF KEY TRENCH.
VT-2	3.0	INSTALL TO 1.0m ABOVE ELEVATION OF BOTTOM LINER.
VT-3	3.0	INSTALL TO 1.0m ABOVE ELEVATION OF BOTTOM LINER.
VT-4	5.0	INSTALL THROUGH CENTRE LINE OF BERM TO INVERT OF KEY TRENCH.

General Notes:

1. ALL DIMENSIONS ARE IN METRES UNLESS NOTED OTHERWISE.
2. APPROXIMATE LOCATIONS FOR INSTRUMENTATION ARE SHOWN ON THE DRAWINGS. ALL LOCATIONS TO BE FIELD CONFIRMED BY THE ENGINEER.
3. MOUND TILL AROUND CASING TO PROMOTE DRAINAGE AWAY FROM INSTRUMENT.
4. PROVIDE THERMISTOR BEADS AT 0.5m MAXIMUM INTERVALS, INCLUDING ONE AT THE BOTTOM OF THE INSTALLATION AND ONE WITHIN A 0.5m DEPTH FROM FINAL DESIGN SURFACE IN EACH INSTALLATION.

Legend:

ISSUED FOR R.F.A.P.	12/28
REVISION	
DATE	
BY	

UMA	AECOM
-----	-------

SGE Acres

SCALE - 100000
AS SHOWN

CAM-5 MACKAR INLET

DEW LINE CLEAN UP

© COPYRIGHT
HER MAJESTY THE QUEEN IN RIGHT OF
CANADA 2005, AS REPRESENTED BY THE
MINISTER OF NATIONAL DEFENCE.

SLING	2005-06-24
-------	------------

SUBJECT - SUJET

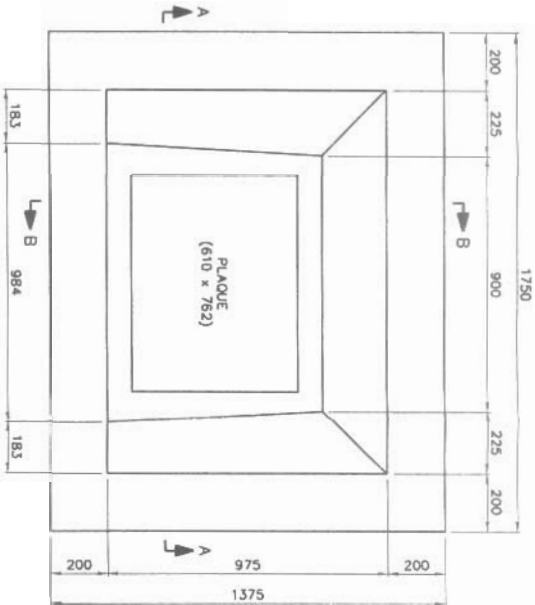
MISCELLANEOUS DETAILS SH. 1

PRODUCTION		COMPLETENCE - ASSIGNMENT	
DESIGNED		DES DPT	
E-UDRE	CJ / BWJ	AGENT CONCEPT	
DRAWN	RZ/DK	SECT HQ	
DES.SAME		CHIEF SECT	
CHECKED	REM	DES WORK	
VARIANTE		DESI CONCIPH	
COORDINATION		REVIEWED - REVU	
SHEET			

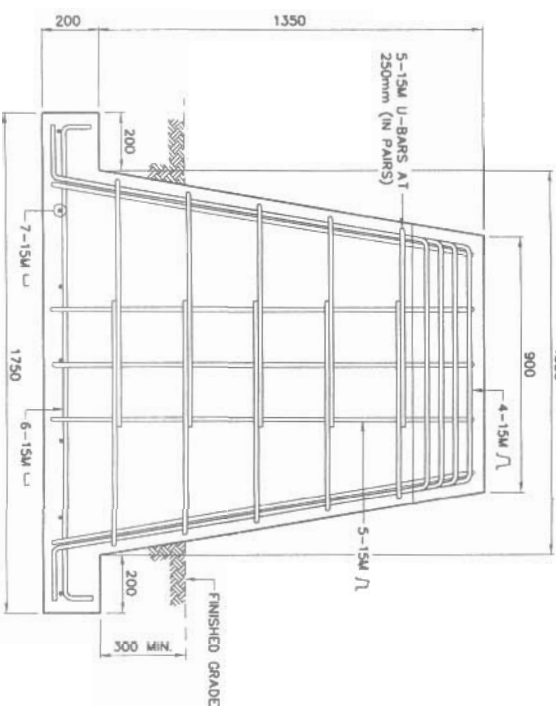
Canada

General Notes:

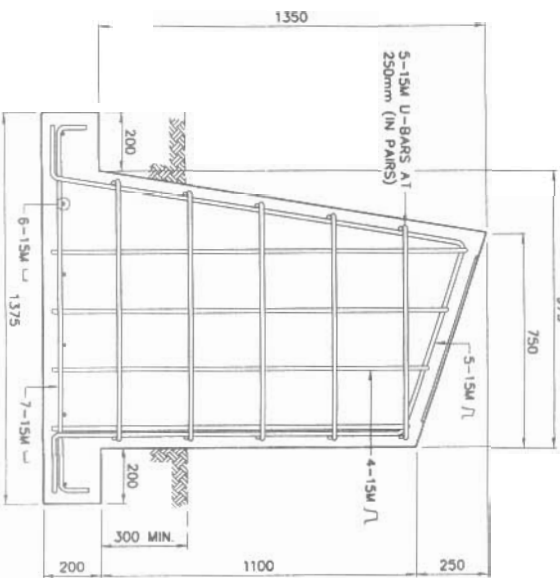
1. ALL DIMENSIONS ARE IN METRES UNLESS NOTED OTHERWISE.
2. APPROXIMATE LOCATIONS FOR INSTRUMENTATION ARE SHOWN ON THE DRAWINGS. ALL LOCATIONS TO BE FIELD CONFIRMED BY THE ENGINEER.
3. LOCATION OF COMMEMORATIVE PLAQUE BASE TO BE DETERMINED BY THE ENGINEER.



PLAN



SECTION A-A



SECTION B-B

COMMEMORATIVE PLAQUE BASE DETAIL (SEE NOTE



TYPICAL CONTAMINATED SOIL EXCAVATION SECTION
N.T.S.

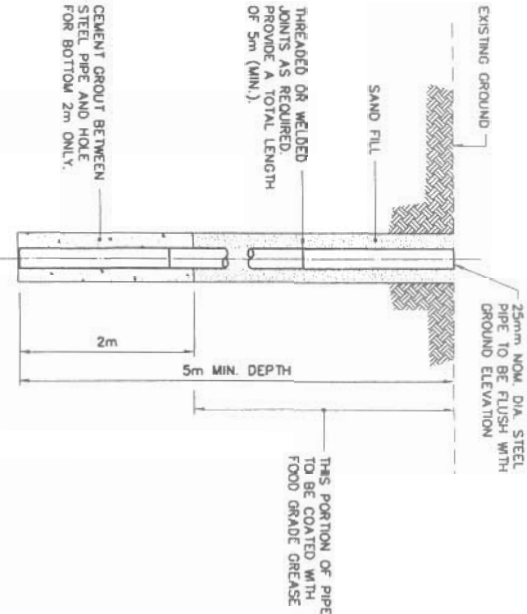


- NOTE:
1. MATERIAL TO BE REMOVED: DCC TIER I SOILS TO BE DISPOSED OF IN THE NON-HAZARDOUS WASTE LANDFILL, DCC TIER II SOILS TO BE DISPOSED OF IN THE TIER II SOIL DISPOSAL FACILITY, HYDROCARBON TYPE B SOILS PLACED IN THE LANDFARM AND TREATED.
 2. TYPE 3 GRANULAR MATERIAL TO BE PLACED IN EXCAVATION, COMPACTED AND MOUND TO 100mm ABOVE GROUND SURFACE TO PROMOTE DRAINAGE, UNLESS NOTED OTHERWISE.

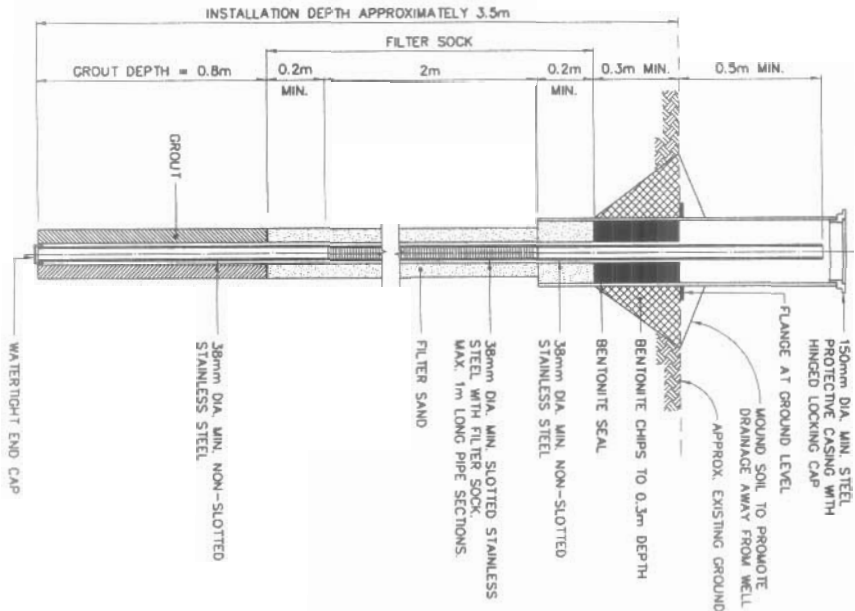
NOTE:
16 MONITORING WELLS TO BE
INSTALLED. SEE NOTE 2.

**TYPICAL PERMANENT SURVEY
CONTROL MONUMENT (BENCHMARK)**
N.T.S.

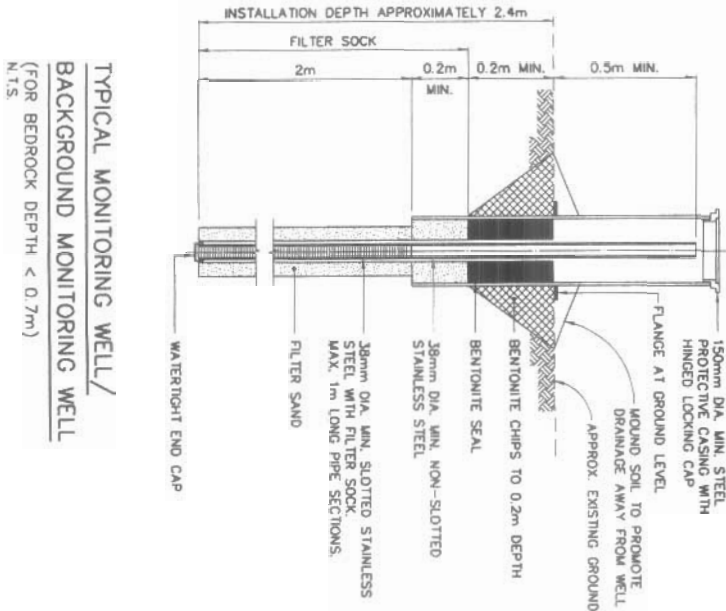
NOTE:
8 PERMANENT SURVEY CONTROL MONUMENTS
TO BE INSTALLED. SEE NOTE 2.



MINIMUM EMBEDMENT CAN BE REDUCED IF
ROCK IS ENCOUNTERED. INSTALLATION TO
PENETRATE A MINIMUM OF 2m INTO ROCK.



**TYPICAL MONITORING WELL/
BACKGROUND MONITORING WELL**
(FOR BEDROCK DEPTH > 0.7m)
N.T.S.



**TYPICAL MONITORING WELL/
BACKGROUND MONITORING WELL**
(FOR BEDROCK DEPTH < 0.7m)
N.T.S.

- COMMEMORATIVE PLAQUE BASE
CONSTRUCTION NOTES:
1. PROVIDE TO SITE ALL EQUIPMENT, MATERIALS, TOOLS, TEMPORARY FORMS AND ASSOCIATED EXCAVATION AND/OR BACKFILL TO CONSTRUCT THE COMMEMORATIVE PLAQUE BASE, INCLUDING 30 MPa CONCRETE AND 15M STEEL REBAR.
 2. COMMEMORATIVE PLAQUE BASE CAN BE CONSTRUCTED ON SITE OR PRE-CAST AND DELIVERED TO SITE.
 3. OWNER TO SUPPLY COMMEMORATIVE PLAQUE.

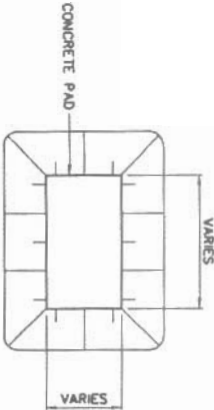
UMA	ACCOM	SCE ACRES
SCALE - EGGELLE	AS SHOWN	
PRODUCT - PROJECT	CAM-5 MACKAR INLET	
DEW LINE CLEAN UP		
TRADE - WATER	SITING	DATE 2005-06-24
SUBJECT - SLUET		
MISCELLANEOUS DETAILS	SH. 2	
PRODUCTION	CONCURRENCE - ASSASSINANT	
DESIGNED (P/M)	DES. OFF	
ETUDE	AGENT CONCEPT	
DRAWN (K/GM)	SECT. NO.	
DESIGNED	CHEF SECT.	
CHECKED	DES. WDR	
VERIFIE	DEST. CONCEPT	
COORDINATION	REVISED - REVU	
3MS		
DWG. NO. - DESIGN NO.	H-M27/1-9101-120	
Canada		

General Notes:

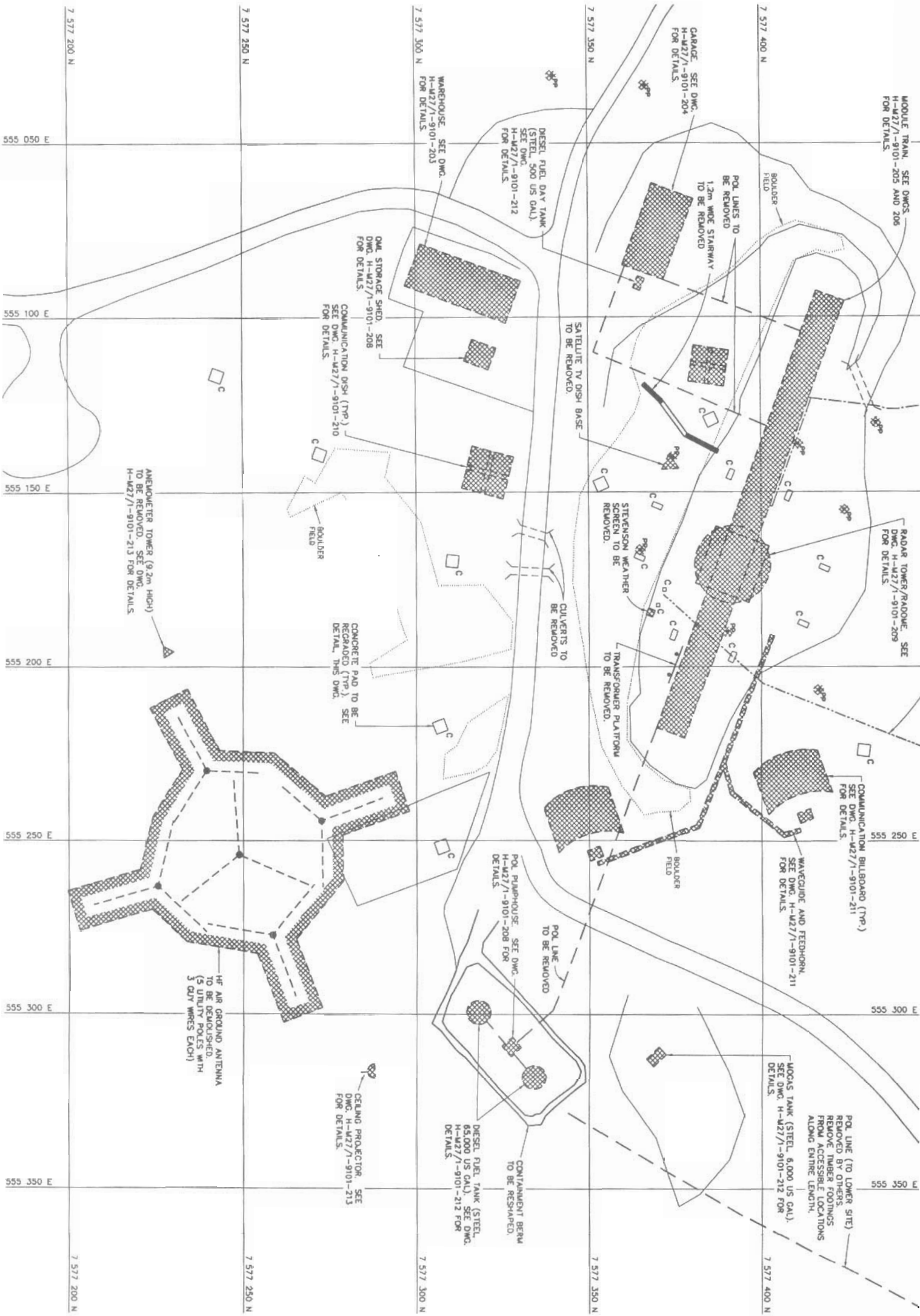
1. ALL STRUCTURES DESIGNATED FOR DEMOLITION TO BE DEMOLISHED TO TOP OF CONCRETE FOUNDATIONS UNLESS NOTED OTHERWISE.
2. ALL DIMENSIONS ARE IN METRES UNLESS NOTED OTHERWISE.
3. ALL POLES, INCLUDING GUY WIRES, TO BE REMOVED UNLESS NOTED OTHERWISE.
4. ALL ELECTRICAL CABLES AND POL LINES TO BE REMOVED.
5. PIPELINES AND ANCILLARY EQUIPMENT TO BE REMOVED TO INCLUDE ALL ASSOCIATED PIPE SUPPORTS AND PIPELINE MARKERS.
6. ALL CULVERTS ARE TO BE REMOVED AND DISPOSED OF.

Legend:

- TO BE DEMOLISHED
- CONCRETE PAD
- UTILITY POLE TO BE REMOVED
- POL LINE
- POWER/COMMUNICATION CABLE
- SEWAGE OUTFALL LINE
- CULVERT



TYPICAL CONCRETE PAD REGRADING DETAIL



8	16-16-N	ISSUED FOR R.F.A.P.	22/11
DATE	REVISION	REVISION	DATE
UNMA AECOM SGE ACRES			
PROJECT - PRODUCT			
CAM-5 MACKAR INLET			
DEW LINE CLEAN UP			
© COPYRIGHT THE QUEEN IN RIGHT OF CANADA 2005. ALL RIGHTS RESERVED BY THE MINISTER OF NATIONAL DEFENCE.			
TRADE - METRIC	STRUCTURAL	DATE	2005-06-24
SUBJECT - SUBJECT			
STATION AREA DEMOLITION SITE PLAN			
PRODUCTION	CONCURRENCE - ASSOCIANT	DES. OFF	AGENCY CONCEPT
DESIGNED	AMM/BN/	DESIGNED	AMM/BN/
CHECKED	AMM/BN/	CHECKED	AMM/BN/
APPROVED	AMM/BN/	APPROVED	AMM/BN/
COORDINATION	AMM/BN/	COORDINATION	AMM/BN/
DWM NO. - DESIGN NO. H-427/1-9101-201			

1. ALL STRUCTURES DESIGNATED FOR DEMOLITION TO BE DEMOLISHED TO TOP OF CONCRETE FOUNDATIONS UNLESS NOTED OTHERWISE.
2. ALL DIMENSIONS ARE IN METRES UNLESS NOTED OTHERWISE.
3. ALL PILES TO BE REMOVED UNLESS NOTED OTHERWISE.
4. ALL CLANGERS ARE TO BE REMOVED AND DISPOSED OF.

1. ALL STRUCTURES DESIGNATED FOR DEMOLITION TO BE DEMOLISHED TO TOP OF CONCRETE FOUNDATIONS UNLESS NOTED OTHERWISE.
2. ALL DIMENSIONS ARE IN METRES UNLESS NOTED OTHERWISE.
3. ALL PILES TO BE REMOVED UNLESS NOTED OTHERWISE.
4. ALL CLANGERS ARE TO BE REMOVED AND DISPOSED OF.

TO BE DEMOLISHED
BODY OF WATER
POWER/COMMUNICATION CABLE
CULVERT

B	05-06-24	ISSUED FOR R.F.A.P.	
MA	DATE	REVISION	REVISION

UMA AECOM SGE Acres

DEW LINE CLEAN UP

© COPYRIGHT
HER MAJESTY THE QUEEN IN RIGHT OF
CANADA 2005, AS REPRESENTED BY THE
MINISTER OF NATIONAL DEFENCE.

TRADE - MECHANICAL	DATE 2005-06
STRUCTURAL	
SUBJECT - SLAB	
AIRSTrip AREA DEMOLITION SITE PLANS	

PRECEDENCE		CONCURRENCE - ASSUMLANT	
DESIGNER	NAME / PW	DES. DEF	
ETUDE		AGENT CONCEPT	
DATA	DATE / P	SECT. HQ	
DESIGNER		CHEF SECT	
CHECKED	DATE	DES. WORK	
VERIFIED		DES. CONCEPT	
COORDINATION			
STAT		RECEIVED - REVU	

- General Notes:
1. ALL DIMENSIONS ARE IN MILLIMETRES.
 2. UNLESS NOTED OTHERWISE.
 3. REFER TO DEMOLITION TABLES IN BUILDING CONTENTS.
 4. FACILITIES TO BE DEMOLISHED MAY CONTAIN PCB AND LEAD CONTAMINATED PAINT. REFER TO SECTION 02060 OF THE SPECIFICATIONS.
 5. ASBESTOS PANELS TO BE REMOVED FROM FURNACE ROOM AND VESTIBULE WALLS.

Legend:

B	16-06-24	ISSUED FOR R.F.A.P.	22#
NO.	DATE	REVISION	REVISION
			APPROV

UMA AECOM SOE Acres

SCALE - EXHIBIT 1 0.5 0 1 2 3m
PROJECT - PROJECT
CAM-5 MACKAR INLET

DEW LINE CLEAN UP
© COPYRIGHT
HER MAJESTY THE QUEEN IN RIGHT OF
CANADA 2005, AS REPRESENTED BY THE
MINISTER OF NATIONAL DEFENCE

BLACK - VETTER STRUCTURAL DATE 2005-06-24

SUBJECT - BUILD
WAREHOUSE
PLAN, SECTION AND ELEVATION

PRODUCTION		CONCURRENCE - ASSIGNED	
DESIGNED	MAK/BBJ	DES. OFF.	AGMT. CONCEPT
ELUCID.		ELUCID.	
DRAWN	BBJ/RC	DRG. NO.	CHG. SECT
CHECKED	BBJ	DES. MOD.	DES. CONCPT
APPROVED	BBJ	REVIEWED	REVU
COORDINATION	BBJ		

DMC NO. - DESIGN NO.
H-427/1-9101-203

Legend:

CAM-5 MACKAR INLET

DEW LINE CLEAN UP

© COPYRIGHT
HER MAJESTY THE QUEEN IN RIGHT OF
CANADA 2003, AS REPRESENTED BY THE
MINISTER OF NATIONAL DEFENCE

TRADE - WEATHER	DATE
STRUCTURAL	2005-06-24

PRODUCTION	CONJUGATE - ASSIGNMENT
------------	------------------------

DESIGNED	DES OFF
ETUPE	ADJUT CONCEPT
DRAMA	SECT NO
DESISME	CHIEF SECT
CHECKED	DES WORK
VERIFIE	CEST CONCEPT
COORDINATION	REVEREND - REVU
JRG	

Legend:

HER MAJESTY THE QUEEN IN RIGHT OF CANADA 2005, AS REPRESENTED BY THE MINISTER OF NATIONAL DEFENCE.

MODULE TRAIN UNITS 1A-25
PLAN

DWA. NO. - DESSIN NO.
H-M27/1-9101-205

- General Notes:
1. REFER TO DEMOLITION TABLES IN SPECIFICATIONS FOR LIST OF MAJOR BUILDING CONTENTS.
 2. FACILITIES TO BE DEMOLISHED MAY CONTAIN PCB AND LEAD CONTAMINATED PAINT. REFER TO SECTION 02060 OF THE SPECIFICATIONS.
 3. ASBESTOS CONTAINING MATERIALS TO BE REMOVED PRIOR TO DEMOLITION.

Legend:

8	IS-B-N	ISSUED FOR R.F.A.P.	2005
DATE	REVISION	REVISION	APPROVE

UMA AECOM SQE Acres

SCALE - ELEVATION 2 1 0 2 4 5m

PROJECT - PROJECT
CAM-5 MACKAR INLET

DEW LINE CLEAN UP

© COPYRIGHT
HER MAJESTY THE QUEEN IN RIGHT OF
CANADA 2005. AS REPRESENTED BY THE
MINISTER OF NATIONAL DEFENCE.

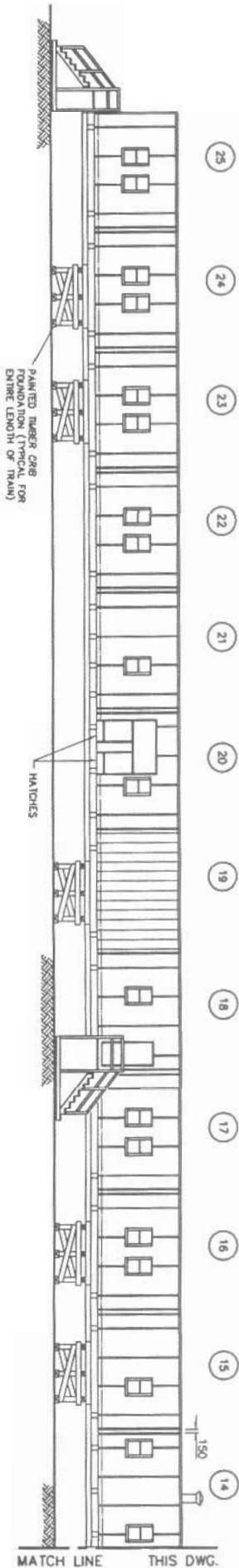
TRADE - METAL STRUCTURAL DATE 2005-06-24

MODULE TRAIN UNITS 1A-25
ELEVATIONS

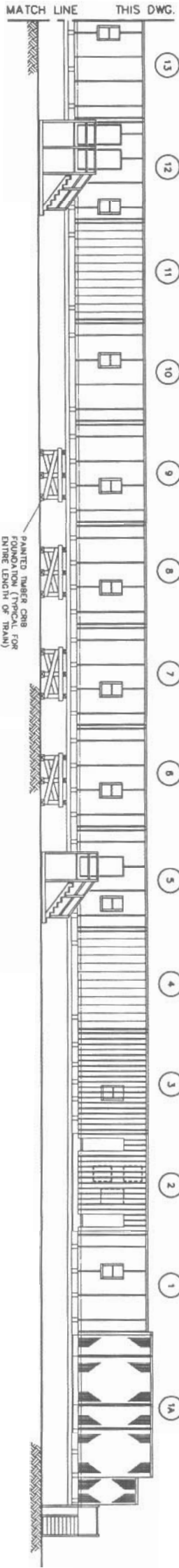
PRODUCTION	CONCURRENCE - ASSIGNED
DESIGNED <i>AMM/BJ</i>	DES. OFF
ETUDED <i>AMM/BJ</i>	ARCHIT. CONCEPT
DRAWN <i>AMM/BJ</i>	SECT. NO.
DESIGNED <i>AMM/BJ</i>	CHEF SECT.
CHECKED <i>AMM</i>	DES. MOD.
VERIFIED <i>AMM</i>	DES. CONCEPT
COORDINATION <i>AMM</i>	REVIEWED - REVU

DWG. NO. - DESIGN NO.
H-427/1-9101-206

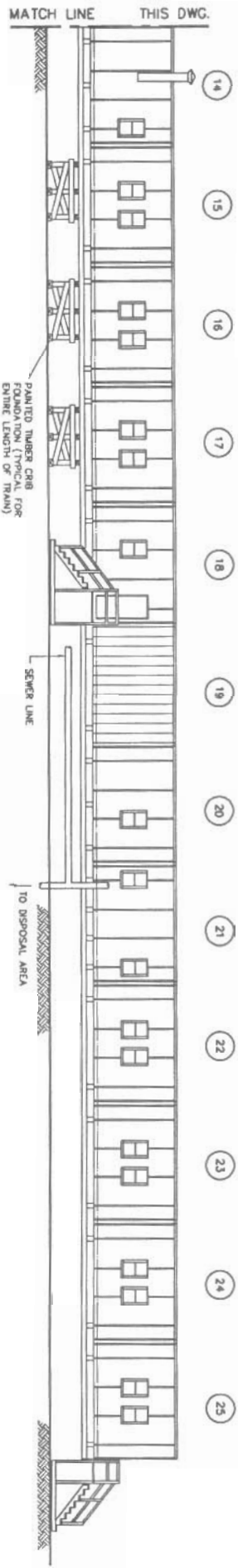
Canada



ELEVATION A
205



ELEVATION B
205



ELEVATION C
205

1. ALL DIMENSIONS ARE IN MILLIMETRES UNLESS NOTED OTHERWISE.
2. REFER TO DEMOLITION TABLE IN BUILDING CONTENTS.
3. FACILITIES TO BE DEMOLISHED MAY CONTAIN PCB AND LEAD CONTAMINATED PAINT. REFER TO SECTION 02060 OF THE SPECIFICATIONS.
4. DEMOLISH TO FINISH ELEVATION BELOW GRADE BEAL. PROVIDE 0.2m TYPE 3 GRAVELLY FILL COVER OVER REMAINING FOUNDATION.

Legend:

CAM-5 MACKAR INLET

MINISTER OF NATIONAL DEFENCE.

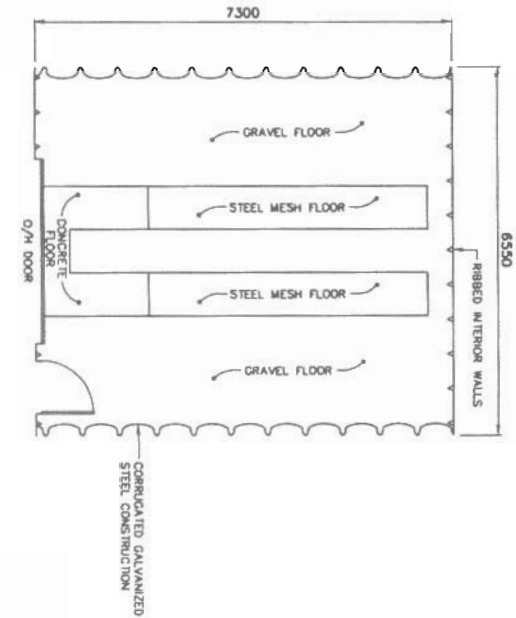
SUBJECT - SUJET

PLAN AND ELEVATIONS

DESIGNATION	DES OFF
DESIGNATION	AGENT CONCPT
DESIGNATION	SECT HQ
DESIGNATION	CHIEF SECT
DESIGNATION	DES HQ
DESIGNATION	DES CONCPT
DESIGNATION	REMOVED - REVU

- General Notes:
1. ALL DIMENSIONS ARE IN MILLIMETRES UNLESS NOTED OTHERWISE.
 2. REFER TO DEMOLITION TABLES IN SPECIFICATIONS FOR LIST OF MAJOR BUILDING COMPONENTS.
 3. FACILITIES TO BE DEMOLISHED MAY CONTAIN PCB AND LEAD CONTAMINATED PAINT. REFER TO SECTION 02060 OF THE SPECIFICATIONS.
 4. REMOVE CREOSOTE TREATED TIMBERS FROM OIL STORAGE SHED FOUNDATION. REMOVE CONCRETE FLOOR AND STEEL MESH FLOOR.
 5. DEMOLITION TO INCLUDE POL PUMPHOUSE CONCRETE SLAB ON GRADE.

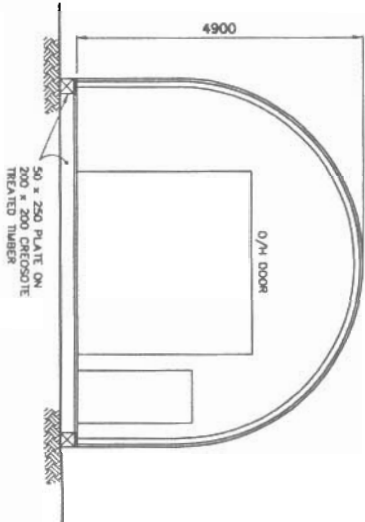
BCE NUMBER	COMMENTS
-	AS SHOWN.



PLAN

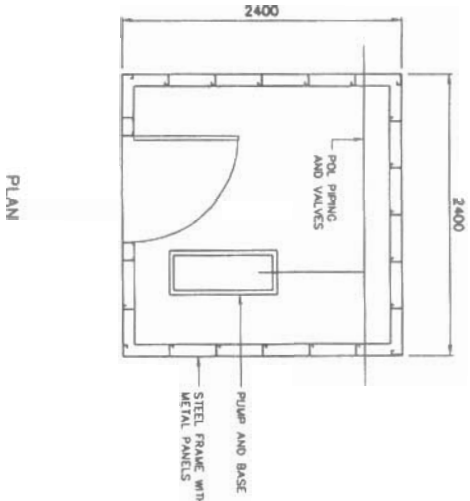
OML STORAGE SHED

0 1 2 3m
0.5

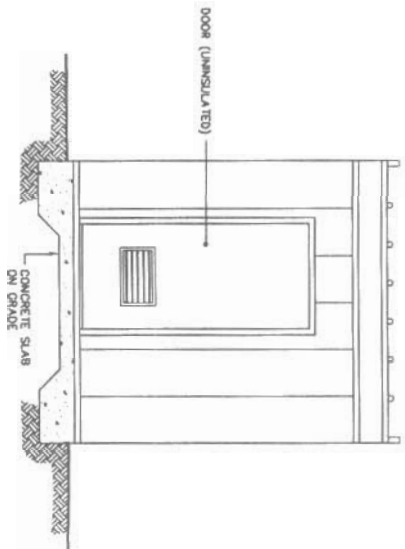


SECTION

BCE NUMBER	COMMENTS
11	AS SHOWN, PUMP, PUMP BASE AND PIPING INSIDE.

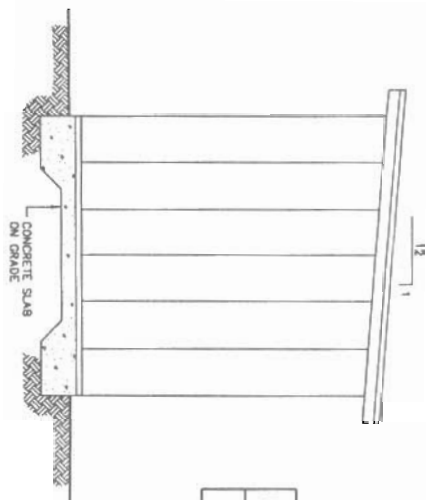


PLAN



FRONT ELEVATION
POL PUMPHOUSE

0 0.5 1 1.5m
0.5



SIDE ELEVATION

Legend:

8	ISSUED FOR R.F.A.P.	2005-08-24
DATE	REVISION	REVISION

UMA AECOM SGE ACRES

SCALE - EXHIBIT AS SHOWN
PROJECT - PROJECT
CAM-5 MACKAR INLET

DEW LINE CLEAN UP
© COPYRIGHT
HER MAJESTY THE QUEEN IN RIGHT OF
CANADA 2005, AS REPRESENTED BY THE
MINISTER OF NATIONAL DEFENCE

MADE - WETTER STRUCTURAL DATE 2005-08-24

OML STORAGE SHED AND
POL PUMPHOUSE
PLANS, SECTION AND ELEVATIONS

PRODUCTION	COMPLIANCE - ASSIGNMENT	DESIGN OFF
DESIGNED	ADAPT CONCEPT	DESIGN NO.
DRAWN	DESIGN NO.	DESIGN NO.
CHECKED	DESIGN NO.	DESIGN NO.
VERIFIED	DESIGN NO.	DESIGN NO.
COORDINATION	DESIGN NO.	DESIGN NO.
1/20	REVIEWED - REVU	DESIGN NO.

OML NO. - DESIGN NO.
H-82771-9101-205