

CAM-5 (Mackar Inlet) DEW Line Cleanup Community Presentation

CAM-5 DEW Line Site Remediation Project

Mackar Inlet, Nunavut

2008 – 2011



Defence Construction
Canada

Construction
de Défense Canada



Meeting Agenda

- Introduction
- Project Overview
- Site Cleanup
- Break
- Construction Camp
- Employment Opportunities
- Questions/Comments
- Door Prizes



Project Roles

Project Owner

- Defence Construction Canada
(DCC)

Asha-Rani Boucher-Sharma

Design Consultant for DCC

- UMA Engineering

Barry Fedorak



Scientific Advisor for DCC

Earth Sciences Group

Shari Reed

Site Remediation Operations

Biogenie S.R.D.C. Inc.

Sylvain Laberge, Project Director

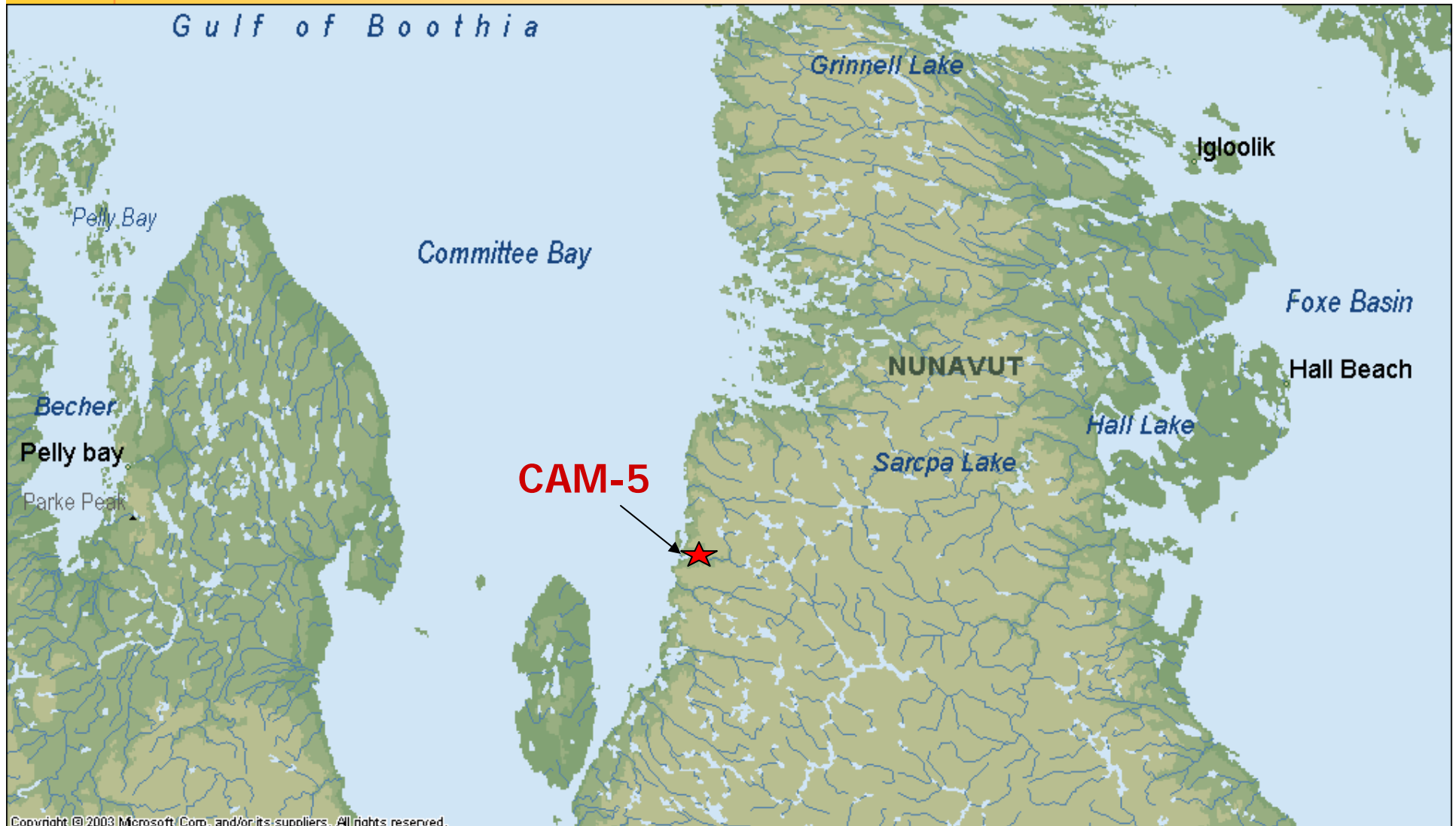
Guillaume Robert, Site Superintendent

Qikiqtani Inuit Association (QIA)



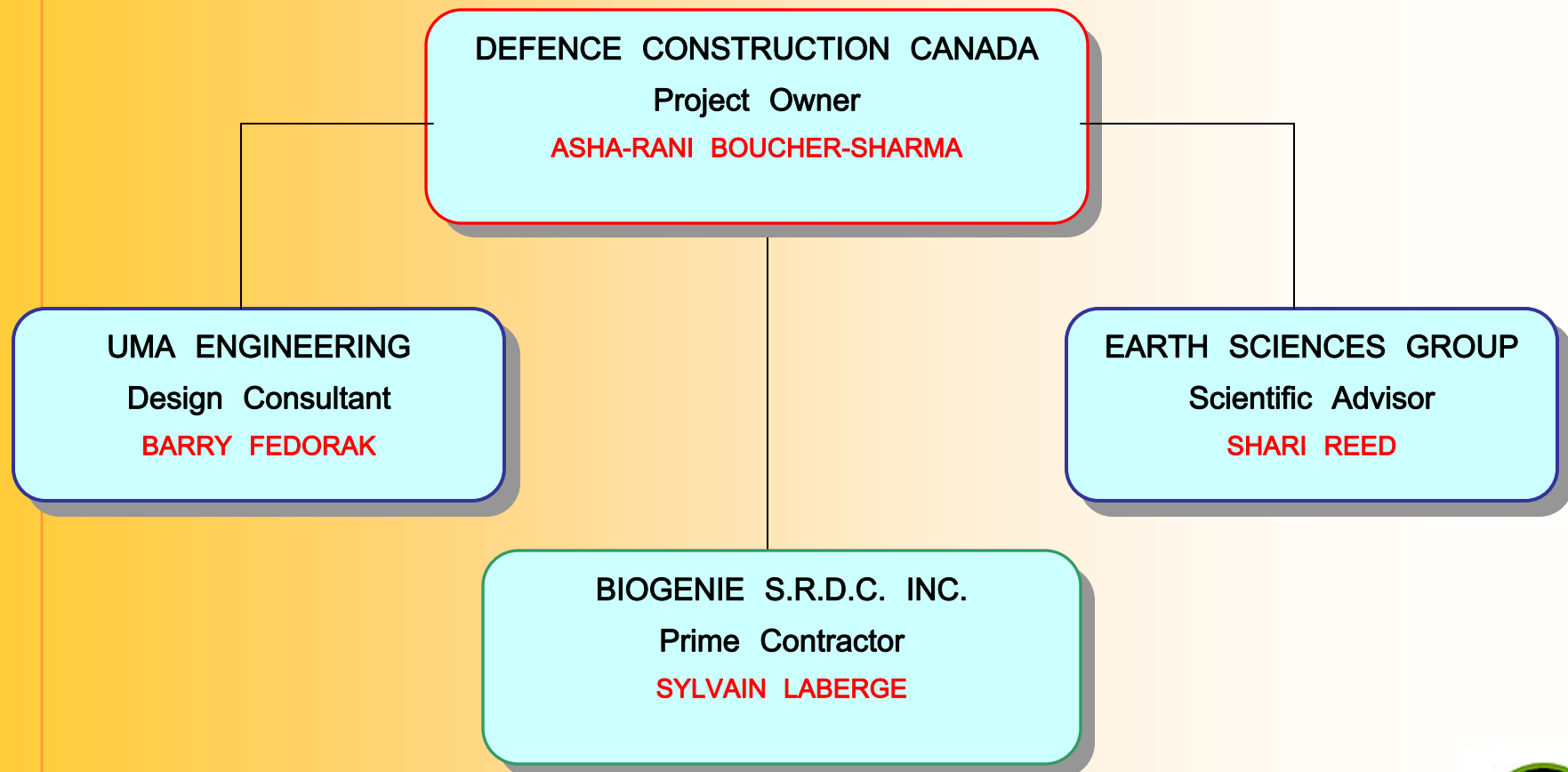
CAM-5 DEW Line Clean-up – Mackar Inlet

Project Location



- To present:
 - Key organizations
 - Current project status
 - Employment opportunities
- Hear input





ΛC₂◁^qb^qBC▷^rϕ^dj^aL^ajC

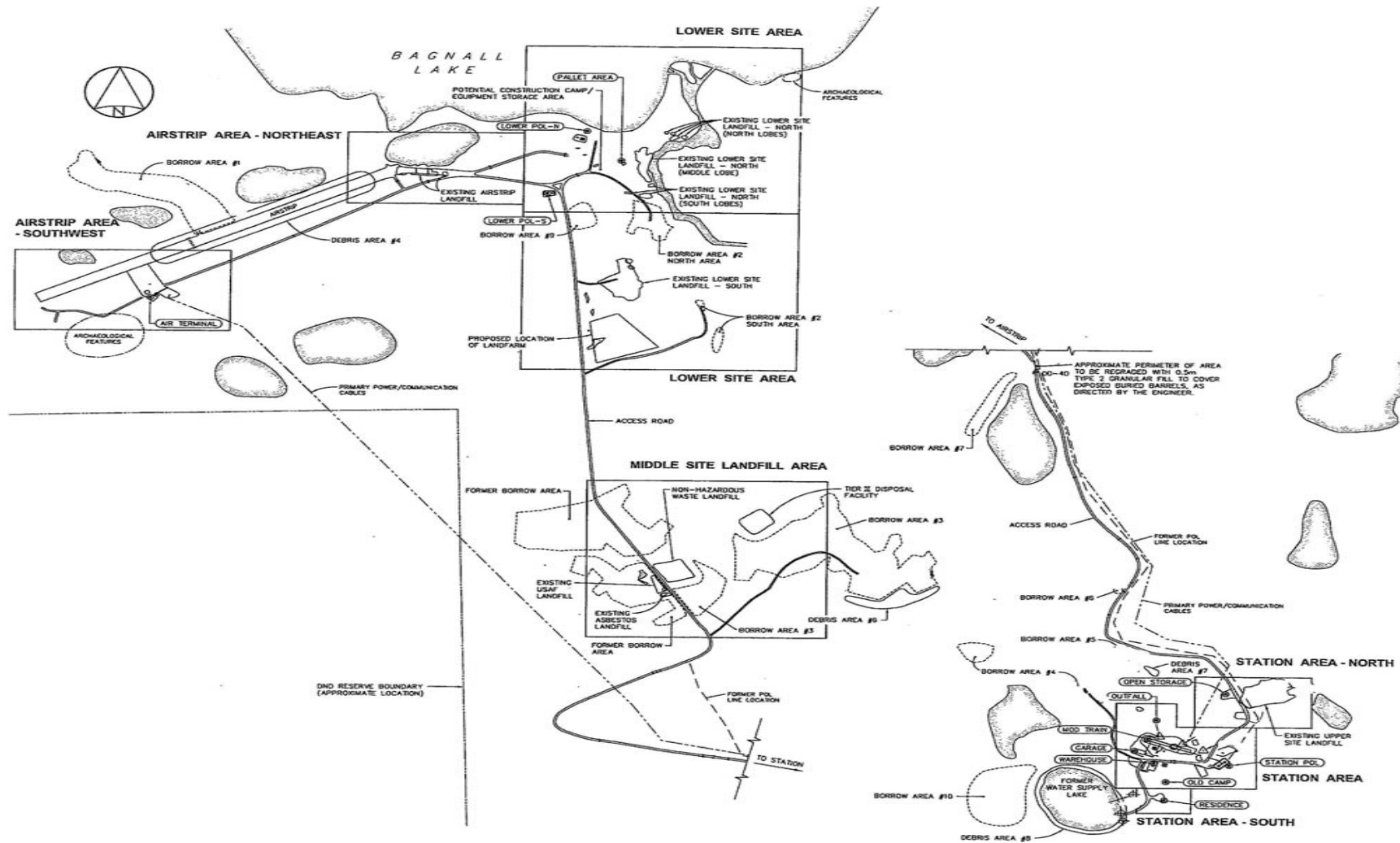


- Built in the 1950's
- Used as an auxiliary DEW line site
- Site was decommissioned in 1992
- Buildings and equipment abandoned
- Detailed site investigations carried out in 2000 and 2002



CAM-5 DEW Line Clean-up – Mackar Inlet

Site Layout



- Minimize environmental impacts to humans and wildlife at the site
- Bring benefits to Northerners and businesses
- Ensure the project is in accordance with all Government of Canada policies
- Complete the project by 2011



- Cat-Train
- On-site Operations
- Construction Camp
- Project Scheduling

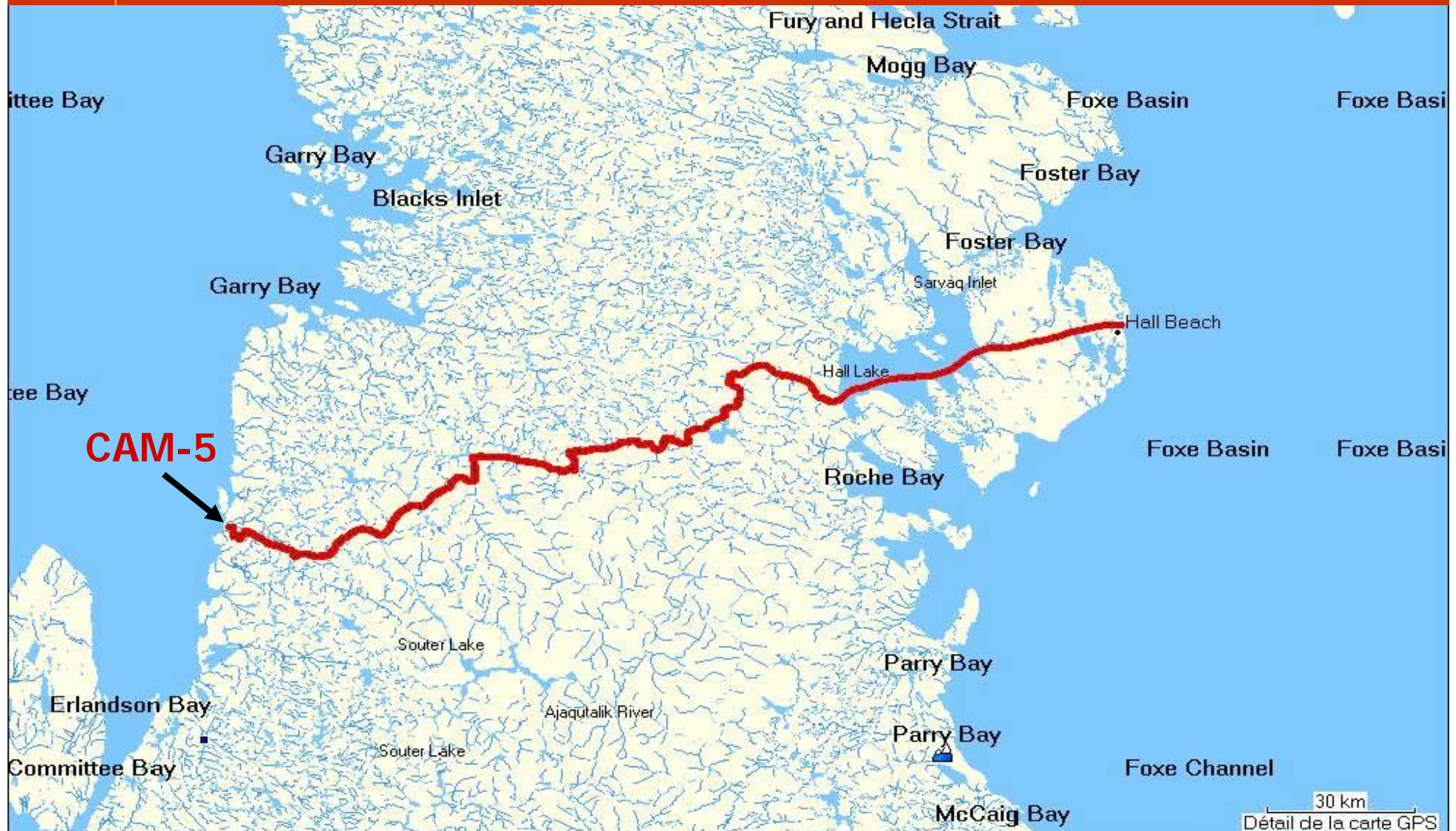


- From mid-March 2008
- Trail scouting and ice profiling
- Preparation of equipment
- Estimated 125 loads (from either Sarcpa Lake or Hall Beach)
- Loads to be hauled on sleighs by Challenger tractors



CAM-5 DEW Line Clean-up –
Mackar Inlet

Projected CAT-Train Route



- Building and Structures Demolition
- Debris Removal
- Contaminated Soil Excavation
- Granular Material Production
- Landfill Construction
- Landfarming
- Instrumentation



Building and Structures Demolition

- Tower and radome, radar
- Module train
- Garage
- Fuel tanks
- POL tanks
- Warehouse
- Communication dish
- Satellite TV dish
- Communication billboards



Demolition (cont.)

Hazardous Material Management

Asbestos:

- Bagging and landfilling

PCBs and lead paint:

- Removal
- Containerization in barge containers
- Off-site disposal (transport South)



Debris Removal

- Scattered debris
- Landfill debris
- Debris in and around lake
- Debris crushed and disposed in landfill



Debris Removal (cont.)

Barrel processing

1. Barrel assessment
2. Product consolidation
3. Barrel cleaning
4. Barrel crushing /Disposal



Contaminated Soil Excavation

- Tier I Soil: Soil slightly contaminated to be used in NHW Landfill
- Tier II Soil: Contaminated soil to be confined in the secure disposal facility
- Hazardous Soil: Soil to be excavated, containerized and transported South for proper final disposal



Granular Material Production

150,000 cubic metres (25,000 truck loads) of granular material will be produced to be used for:

- Landfill construction
- Regrading
- Backfilling of areas where contaminated soil has been excavated



Landfill Construction

- **Secure Landfill:** Lined to Confine Contaminated Soil
- **Non-Hazardous Waste Landfill:** Disposal of non-contaminated debris



Landfarming

Contaminated soil is spread into a thin layer and nutrients are added to aid in the biological decontamination process. The soil is then tilled periodically to increase its exposure to the air.

For this project, approximately 7,500 cubic metres (1,250 truck loads) of contaminated soil will be landfarmed.



Instrumentation

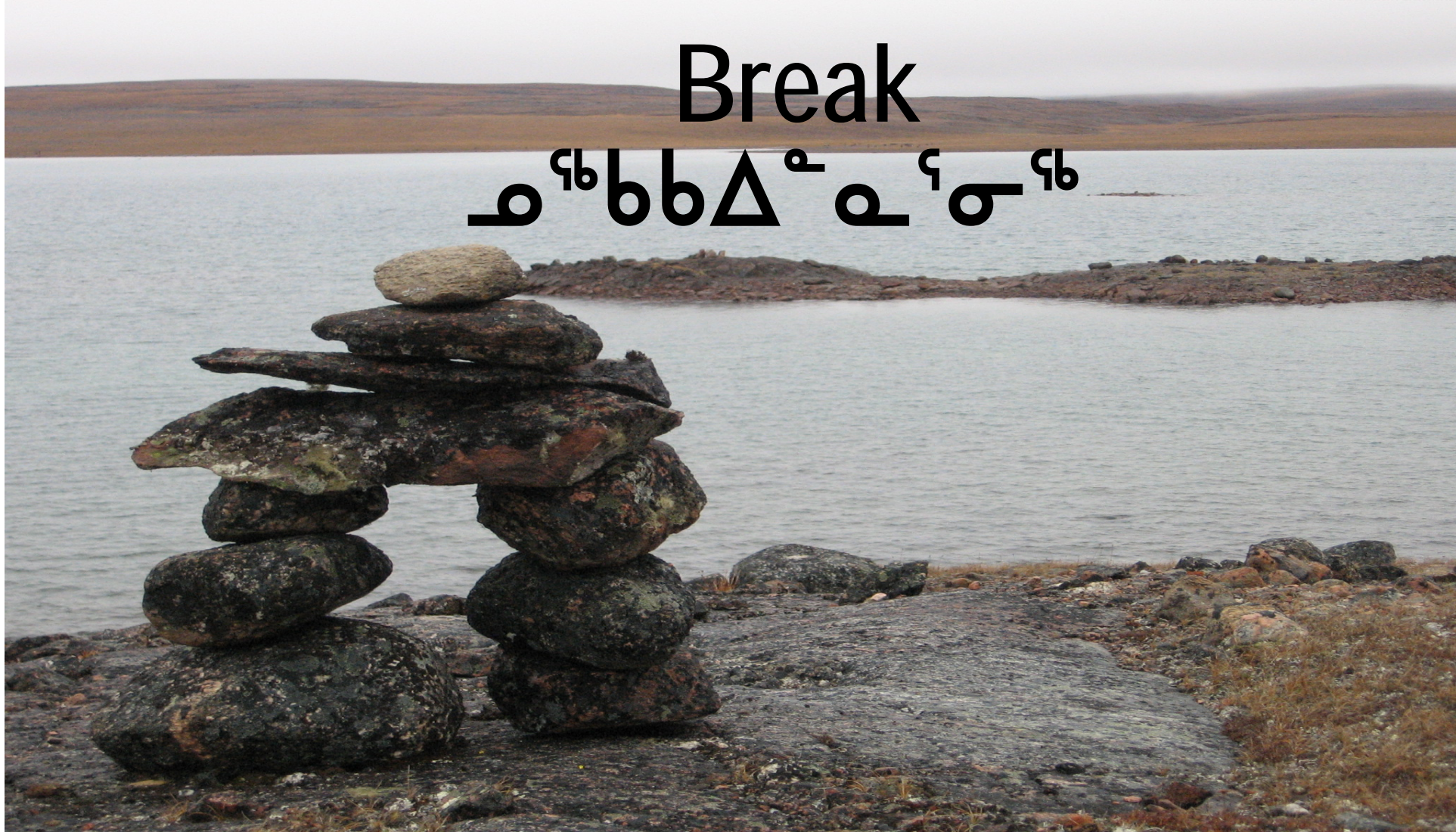
Installation of :

- Monitoring wells
- Ground temperature thermistors
- Permanent survey monuments



CAM-5 DEW Line Clean-up – Mackar Inlet

ᄃᆞᆫ ᄇᆞᆯ ᄇᆞᆯ ᄇᆞᆯ ᄇᆞᆯ ᄇᆞᆯ ᄇᆞᆯ ᄇᆞᆯ ᄇᆞᆯ ᄇᆞᆯ ᄇᆞᆯ



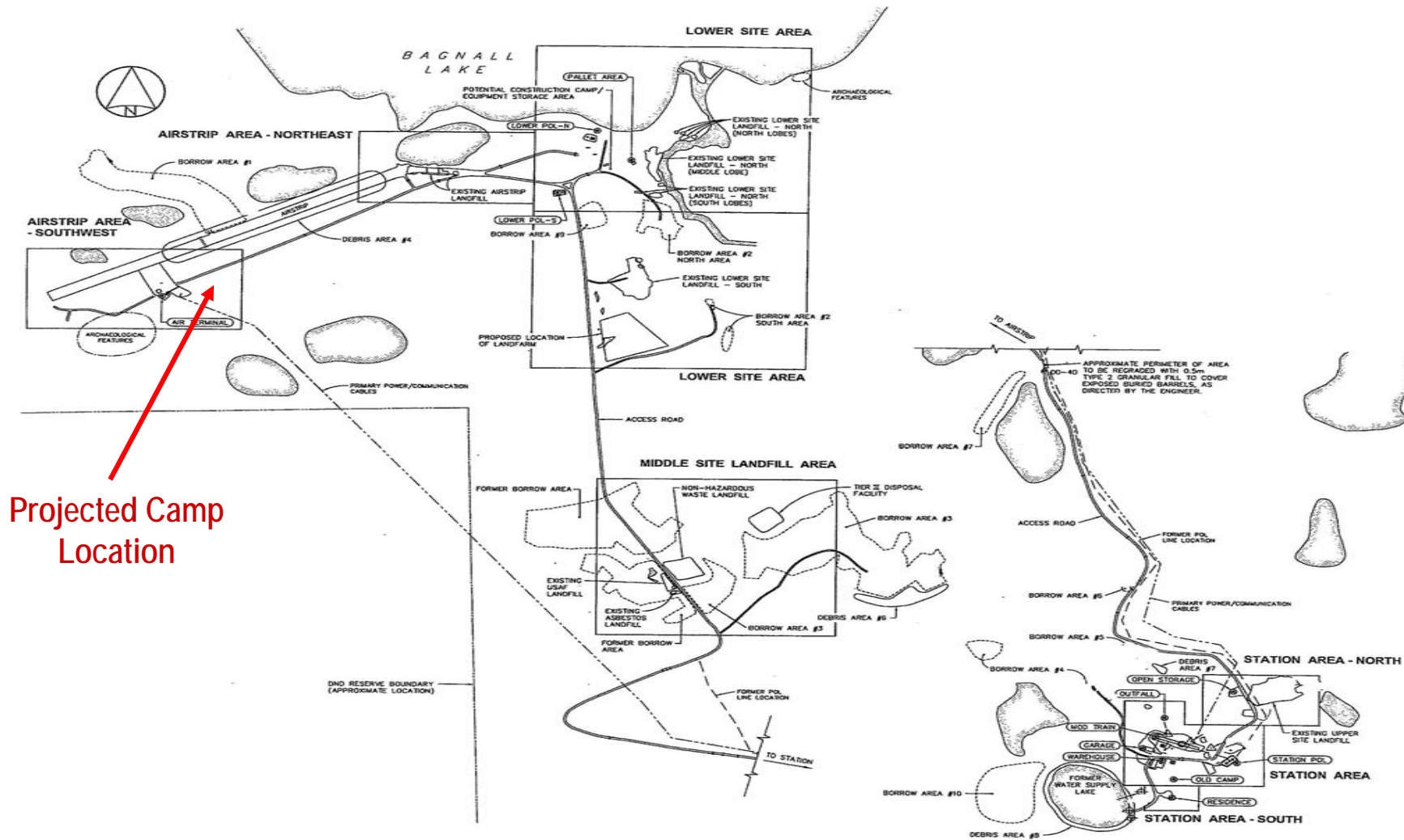
- Camp Construction Details
- Potable Water Management
- Waste Management
- Camp Winterization /
Surveillance



CAM-5 DEW Line Clean-up – Mackar Inlet

Camp Operations

Camp Location Map



Mackar Inlet Construction Camp is a 50-man capacity camp separated into 5 complexes

Complex #1:

- Camp Office
- Separate female quarters
- First aid room

Complexes #2 & #3

- Double occupancy dormitories

Complex #4

- Recreation complex

Complex #5

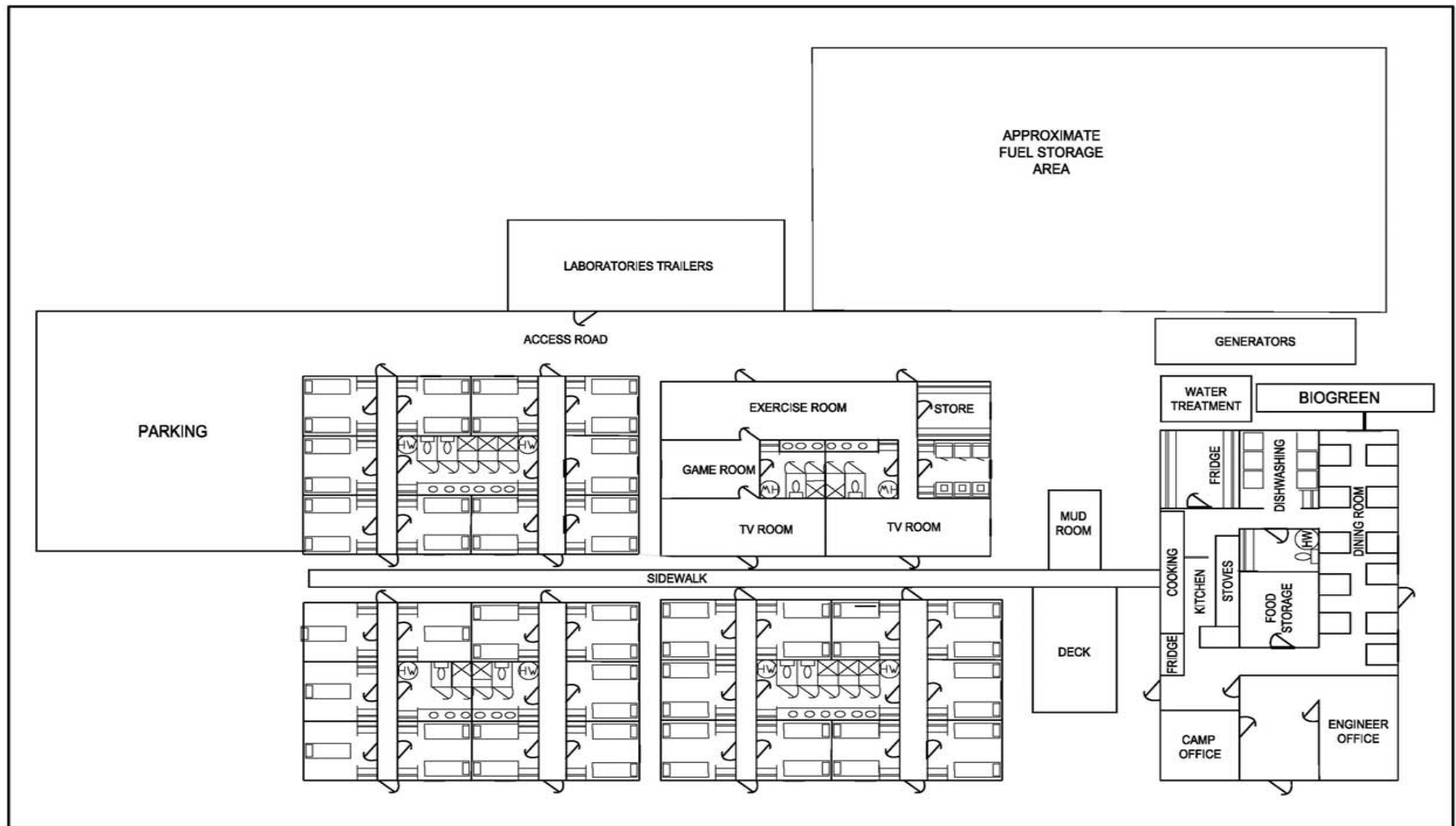
- Kitchen/ dining room complex
- Site office



CAM-5 DEW Line Clean-up – Mackar Inlet

Camp Operations

Preliminary Camp Layout



Recreational Complex

-DVD room

የኮሙኒኬሽን ርዕሰ ልሳን

-Games

ለጥንቃቄ

-Fitness room

ልማት ርዕሰ ልሳን

-Internet facility

የኢንተርኔት ርዕሰ ልሳን

-Laundry facility

ፋብሪካ ርዕሰ ልሳን



Dormitories Complex

- Double occupancy rooms
- Toilet/ shower in each complex
- Female quarters



CAM-5 DEW Line Clean-up – Mackar Inlet

Camp Operations

Kitchen / Dining Complex

- Cooking / dishwashing facilities
- Dining room
- Dry food storage
- Freezer / cooler
- Washroom
- Phone access



Water Supply

- Water supply from Bagnall Lake with water trucks

Potable water treatment

- Activated carbon / sediment filter
- Ultra Violet disinfection system

Water sampling

- Sampling campaigns
- Results must be compliant with Health Canada criteria



Waste Management

- Combustible waste incinerated on site
- Non-combustible waste disposed of in the non-hazardous waste landfill



Winterization

- Wood skirting around the camp
- Windows and doors placarded
- No valuable equipment left on site
- Diesel fuel storage tank locked
- No gas left on site
- Site surveillance on a regular basis



Employment Conditions

- Room and board provided
- Three weeks on/one week off
- Work shift 11 hours/day
- Day and night shifts



Site Limitations

- Only Wildlife Monitors are allowed to bring a gun on site
- The region around CAM-5 supports one of the largest polar bear populations in the Canadian Arctic - employees must remain inside the perimeter patrolled by bear monitors at all times
- No drugs or alcohol are permitted on site



Cat-train Mobilization

- Heavy equipment operators
- Labourers
- Wildlife monitors /
Scouts
- Cook's helper



Site Remediation (2008-2009)

- Loader / Tractor operators
- Dozer operators
- Truck drivers
- Labourers
- Mechanic & surveyor helpers
- Wildlife monitors
- Site clerk



CAMP

- *Camp Erection
(2008)*
 - Electrician &
Plumber
 - Carpenters
 - Labourers
- *Camp Operation
(2008-2009)*
 - Camp Attendant
 - Cook's Helper



Employment Process

- Job description/requirements to be posted on Biogenie's Website and at the Hamlet's Employment Office
- Resumes to be mailed/faxed or e-mailed
- Interview to be scheduled in coordination with the Hamlet Employment Office

www.biogenie-env.com
jobs@biogenie-env.com



CAM-5 DEW Line Clean-up – Mackar Inlet

Questions/Comments?

◀Λ^{9b}∂^c∩^c/▷^{9b}▷^c∩^c



CAM-5 DEW Line Clean-up – Mackar Inlet

End
⏮ ⏪ ⏩ ⏭

