



November 4, 2011

RECEIVED

By Manager of Licensing at 12:33 pm, Nov 04, 2011

Phyllis Beaulieu
Manager of Licensing
Nunavut Water Board
PO Box 119
Gjoa Haven NU
X0B 1J0

**RE: AMENDMENT REQUEST – WATER LICENCE #1BR-PEE1116 – PIN-E
CAPE PEEL REMEDIATION PROJECT**

Dear Ms. Beaulieu:

We would like to request a couple of amendments to the Water Licence issued for the PIN-E Cape Peel Remediation Project (#1BR-PEE1116). The amendments being requested are to the section detailed below:

Part C: Conditions Applying to Water Licence

1. The Licensee shall obtain water, for camp use and miscellaneous purposes identified in the application from the Fresh Water Lake adjacent to the PIN-E, Cape Peel Intermediate DEW Line Site, at Monitoring Station PEE-1. The maximum quantity of water allowed for the purpose of this licence is seven (7) cubic metres per day.

We would like to amend this section to:

- 1) Increase the maximum allowable quantity of water from seven (7) to ten (10) cubic metres per day
- 2) Add an additional water source, the creek located near the northwest end of the site, see Water Intake #2 on Figure #1 (GPS Coordinates: 69° 2'58.15"N, 107°16'48.55"W)

The reasons we are requesting an increase to the maximum allowable quantity of water per day are:

- The water truck we are using has a maximum capacity of 9.4 cubic metres and we would like to be able to fill it when we are pumping water.
- Our operations require more water than anticipated.

The reason we are requesting access to an additional water source is:

- When we used the Fresh Water Lake during September 2011 the water failed water quality tests due to the presence of coliforms. Having an additional source will give us a back-up source in case we have water quality issues in future years.

If you have any questions or require additional information please contact the Project Manager, Mark Yetman at (867) 975-4733 or via e-mail at mark.yetman@aadnc-aadnc.gc.ca.

Regards,

A handwritten signature in black ink, appearing to read 'Natalie Plato', with a stylized flourish at the end.

Natalie Plato
Director, Contaminated Sites Program
Nunavut Regional Office
867-975-4730 (tel)
867-975-4736 (fax)
natalie.plato@aadnc-aadnc.gc.ca

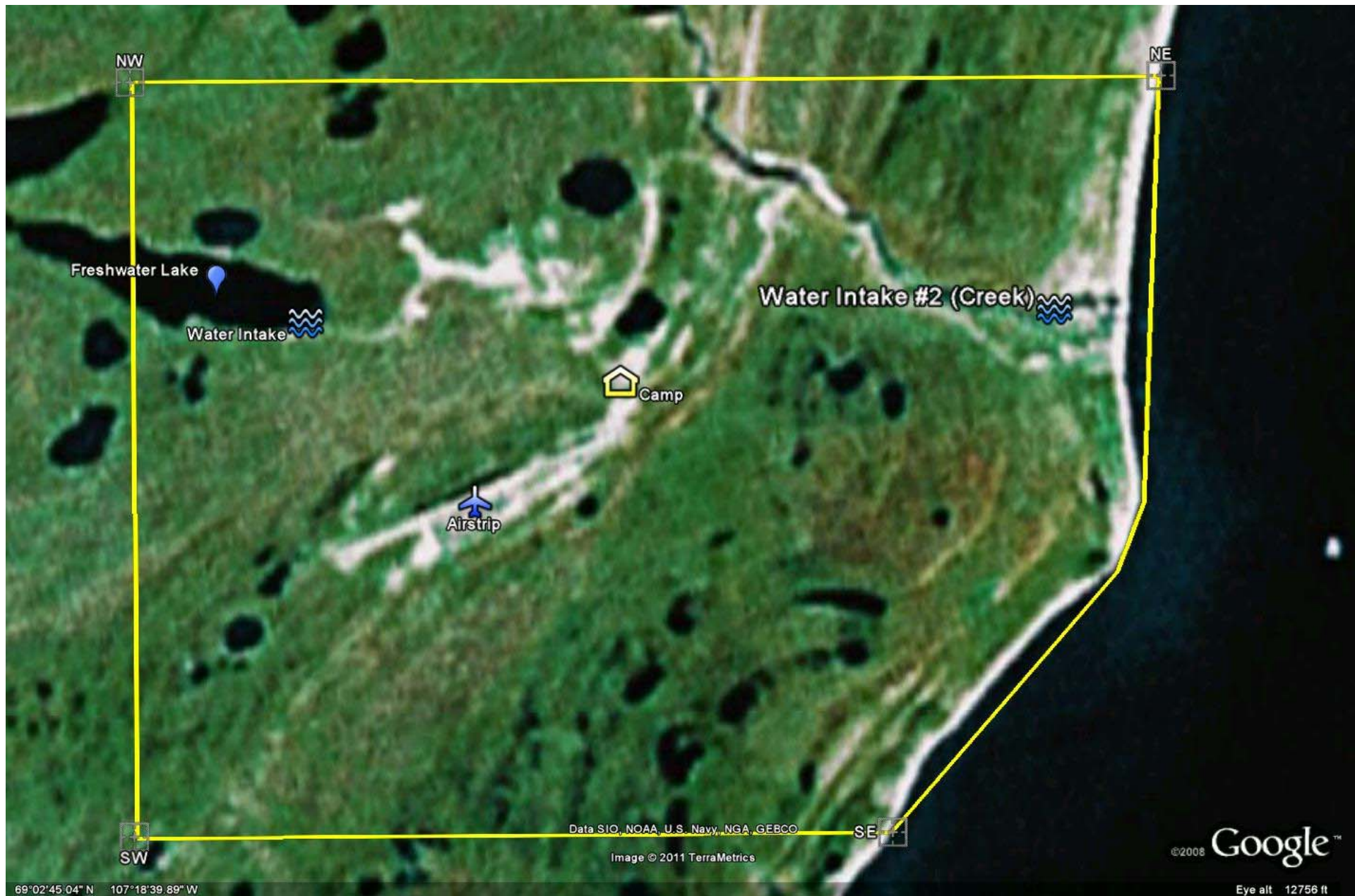


Figure 1: PIN-E Cape Peel Site Diagram Indicating the Location of the Water Intake #2 (Creek)