

FIGURES





LEGEND

- Approximate Alignment of Airstrip
- Intermediate Contour (0.5 m)
- Major Contour (1 m)

1				
REV.	DESCRIPTION	YY/MM/DD	BY	CHK

REFERENCES

PROPRIETARY INFORMATION MAY NOT BE REPRODUCED OR DIVULGED WITHOUT PRIOR WRITTEN CONSENT OF BLUMETRIC ENVIRONMENTAL INC. DO NOT SCALE DRAWING. THIS DRAWING MAY HAVE BEEN REDUCED. ALL SCALE NOTATIONS INDICATED ARE BASED ON 11"x17" FORMAT DRAWINGS.

1:10,000

CLIENT

Public Services and Procurement Canada

PROJECT

Environmental Impact Assessment
Pelly Lake Airstrip and
Former Fuel Cache Site, Nunavut

TITLE

Site Location Map

4916 49th Street,
PO Box 11086
Yellowknife, NT, X1A 1P3
TEL: (867) 873-3500
FAX: (867) 873-3499
Email: info@blumetric.ca
Web: <http://www.blumetric.ca>

PROJECT # 220515		DATE November 02, 2023	
DRAWN MB	CHECKED JK	FIG NO. 01	REV 0



- LEGEND
- Approximate Alignment of Airstrip
 - Stream outline
 - Direction of Stream Flow

1				
REV.	DESCRIPTION	YY/MM/DD	BY	CHK

REFERENCES

PROPRIETARY INFORMATION MAY NOT BE REPRODUCED OR DIVULGED WITHOUT PRIOR WRITTEN CONSENT OF BLUMETRIC ENVIRONMENTAL INC. DO NOT SCALE DRAWING. THIS DRAWING MAY HAVE BEEN REDUCED. ALL SCALE NOTATIONS INDICATED ARE BASED ON 11"x17" FORMAT DRAWINGS.

0 140 280 Meters

1:7,000

CLIENT

Public Services and Procurement Canada

PROJECT

**Environmental Impact Assessment
Pelly Lake Airstrip and
Former Fuel Cache Site, Nunavut**

TITLE

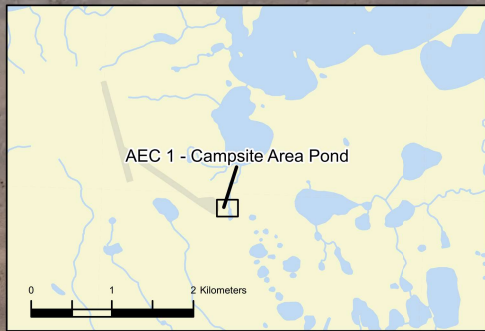
Site Features

4916 49th Street,
PO Box 11086
Yellowknife, NT, X1A 1P3
TEL: (867) 873-3500
FAX: (867) 873-3499
Email: info@blumetric.ca
Web: http://www.blumetric.ca

PROJECT #
220515

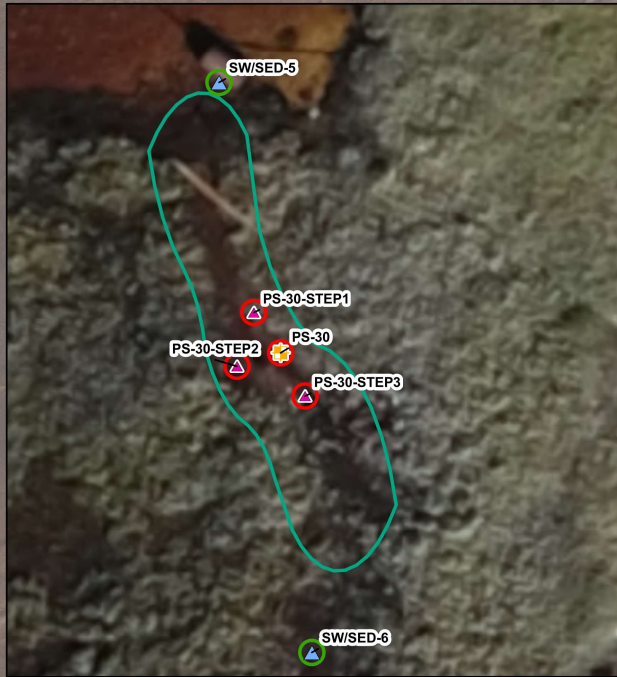
DATE
November 02, 2023

DRAWN	CHECKED	FIG NO.	REV
MB	JK	02	0



COC	Unit	PS30	PS30 – STEP 1	PS30 – STEP 2	PS30 – STEP 3	SED5	SED6	PW3	PW5
Lead (Pb)	mg/kg	4385	1740	7540	2720	60.2	14.8	0.97	0.95

COC	Unit	SED1	SED 2	SED 3	SED 4
Lead (Pb)	mg/kg	0.84	1.26	3.53	3.62



SW/SED-1 North of AEC 1

PW-5

SW/SED-1

PW-3

SW/SED-3

SW/SED-4

SW/SED-5

PS-30

SW/SED-6

LEGEND

- Extent of sediment impacts exceeding the Probable Effects Level
- Surface Water Sample Location
- Historic Sediment
- Historical Sediment/Surface Water
- Stepout Sediment
- Sample Below Guidelines
- Sample Above Guidelines

Parameter	Probable Effects Level
Lead	91.3
All units are in mg/kg	
Bold and grey indicates value exceeded guideline value	

1				
REV.	DESCRIPTION	YY/MM/DD	BY	CHK
REFERENCES PROPRIETARY INFORMATION MAY NOT BE REPRODUCED OR DIVULGED WITHOUT PRIOR WRITTEN CONSENT OF BLUMETRIC ENVIRONMENTAL INC. DO NOT SCALE DRAWING. THIS DRAWING MAY HAVE BEEN REDUCED. ALL SCALE NOTATIONS INDICATED ARE BASED ON 11"x17" FORMAT DRAWINGS.				
0 15 30 Meters 1:781				

CLIENT	Public Services and Procurement Canada
--------	--

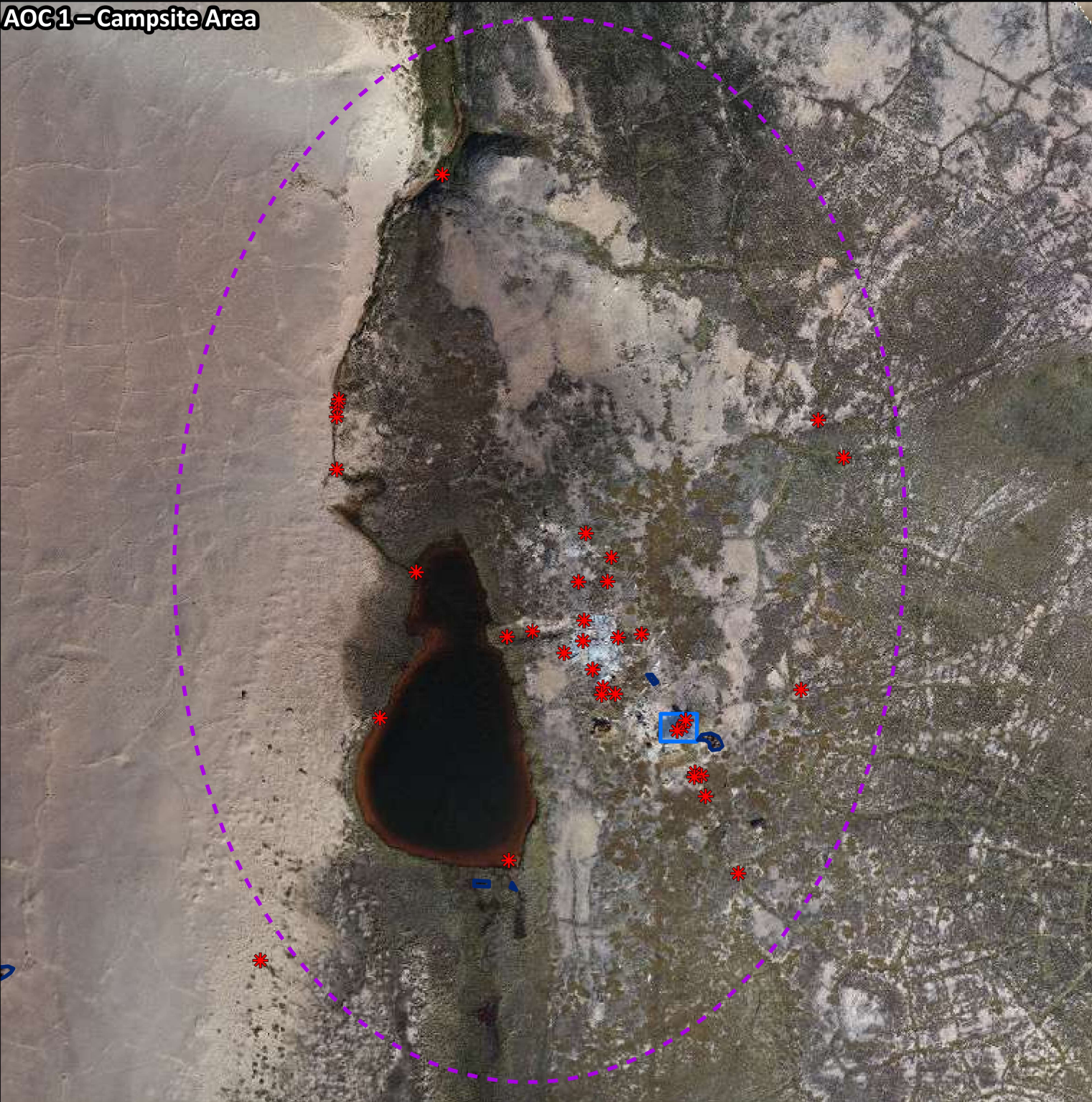
PROJECT	Environmental Impact Assessment Pelly Lake Airstrip and Former Fuel Cache Site, Nunavut
---------	---

TITLE	Impacted Sediment
-------	-------------------

	4916 49th Street, PO Box 11086 Yellowknife, NT, X1A 1P3 TEL: (867) 873-3500 FAX: (867) 873-3499 Email: info@blumetric.ca Web: http://www.blumetric.ca
---	---

PROJECT #	220515	DATE	March 06, 2023
DRAWN	PB	CHECKED	KC
FIG NO.	00	REV	1

AOC1 – Campsite Area



LEGEND

—

 Approximate Alignment of Airstrip

Barrel/Tank Sample Location

Barrel Areas

Building

AOC 1 - Campsite Area

AOC 2 - Site #1

AOC 3 - Site #2

AOC 4 - Drinking Water Lake



1				
REV.	DESCRIPTION	YY/MM/DD	BY	CHK

REFERENCES

PROPRIETARY INFORMATION MAY NOT BE REPRODUCED OR DIVULGED WITHOUT PRIOR WRITTEN CONSENT OF BLUMETRIC ENVIRONMENTAL INC. DO NOT SCALE DRAWING. THIS DRAWING MAY HAVE BEEN REDUCED. ALL SCALE NOTATIONS INDICATED ARE BASED ON 6.5"x11" FORMAT DRAWINGS.

1:1,250

CLIENT

Public Services and Procurement Canada

PROJECT

**Environmental Impact Assessment,
Pelly Lake Former Airstrip and
Former Fuel Cache Site, Nunavut**

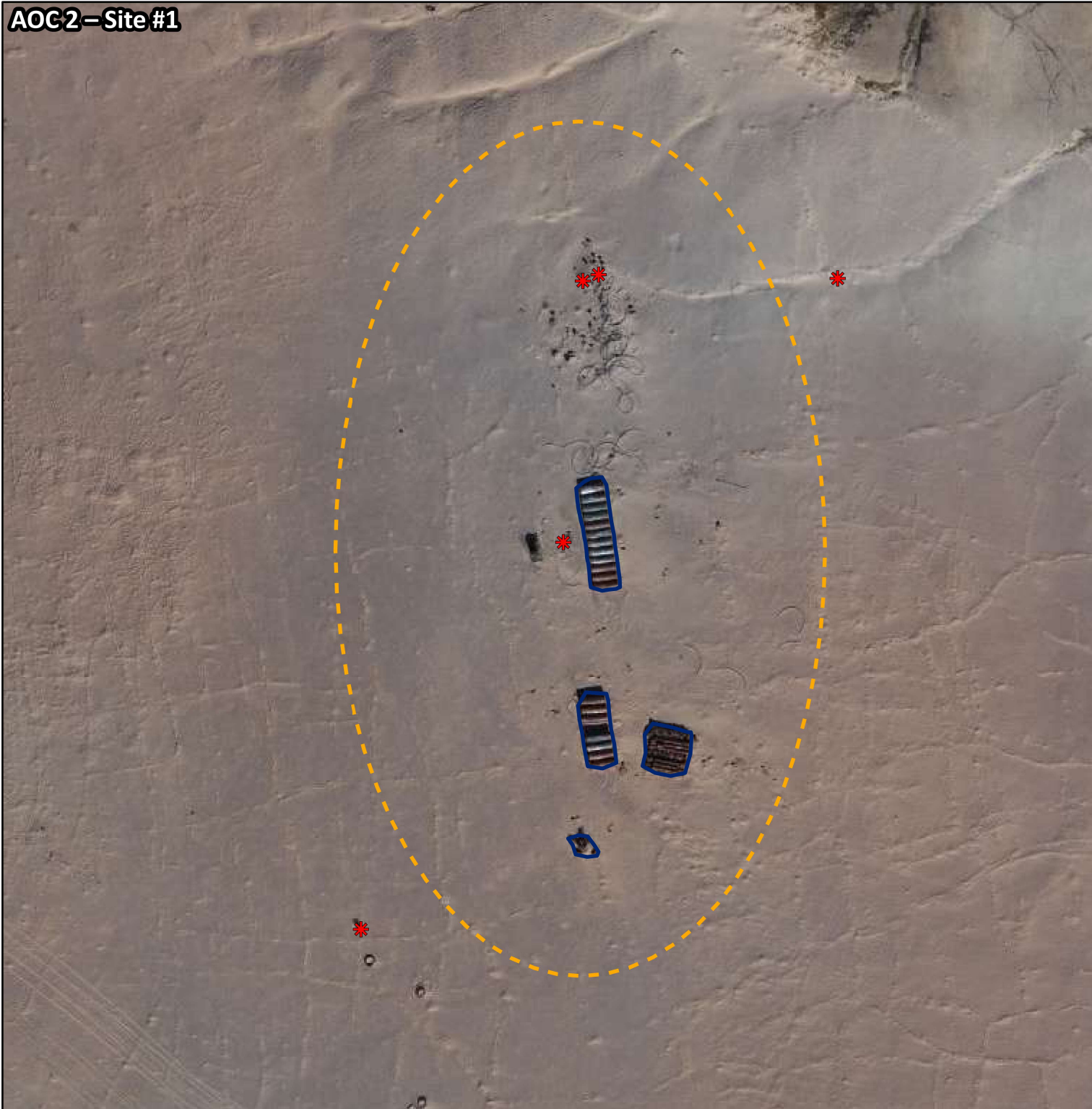
TITLE

Debris in AOC 1 - Campsite Area

4916 49th Street,
PO Box 11086
Yellowknife, NT, X1A 1P3
TEL: (867) 873-3500
FAX: (867) 873-3499
Email: info@blumetric.ca
Web: <http://www.blumetric.ca>

PROJECT #	220515	DATE	November 02, 2023
DRAWN	MB	CHECKED	JB
FIG NO.	04a	REV	0

AOC2-Site #1



LEGEND

- Approximate Alignment of Airstrip
- ✱ Barrel/Tank Sample Location
- Barrel Areas
- Building
- Area of Concern
- AOC 1 - Campsite Area
- AOC 2 - Site #1
- AOC 3 - Site #2
- AOC 4 - Drinking Water Lake



1				
REV.	DESCRIPTION	YY/MM/DD	BY	CHK

REFERENCES

PROPRIETARY INFORMATION MAY NOT BE REPRODUCED OR DIVULGED WITHOUT PRIOR WRITTEN CONSENT OF BLUMETRIC ENVIRONMENTAL INC. DO NOT SCALE DRAWING. THIS DRAWING MAY HAVE BEEN REDUCED. ALL SCALE NOTATIONS INDICATED ARE BASED ON 8.5"x11" FORMAT DRAWINGS.



1:800



CLIENT

**Public Services and
Procurement Canada**

PROJECT

**Environmental Impact Assessment,
Pelly Lake Former Airstrip and
Former Fuel Cache Site, Nunavut**

TITLE

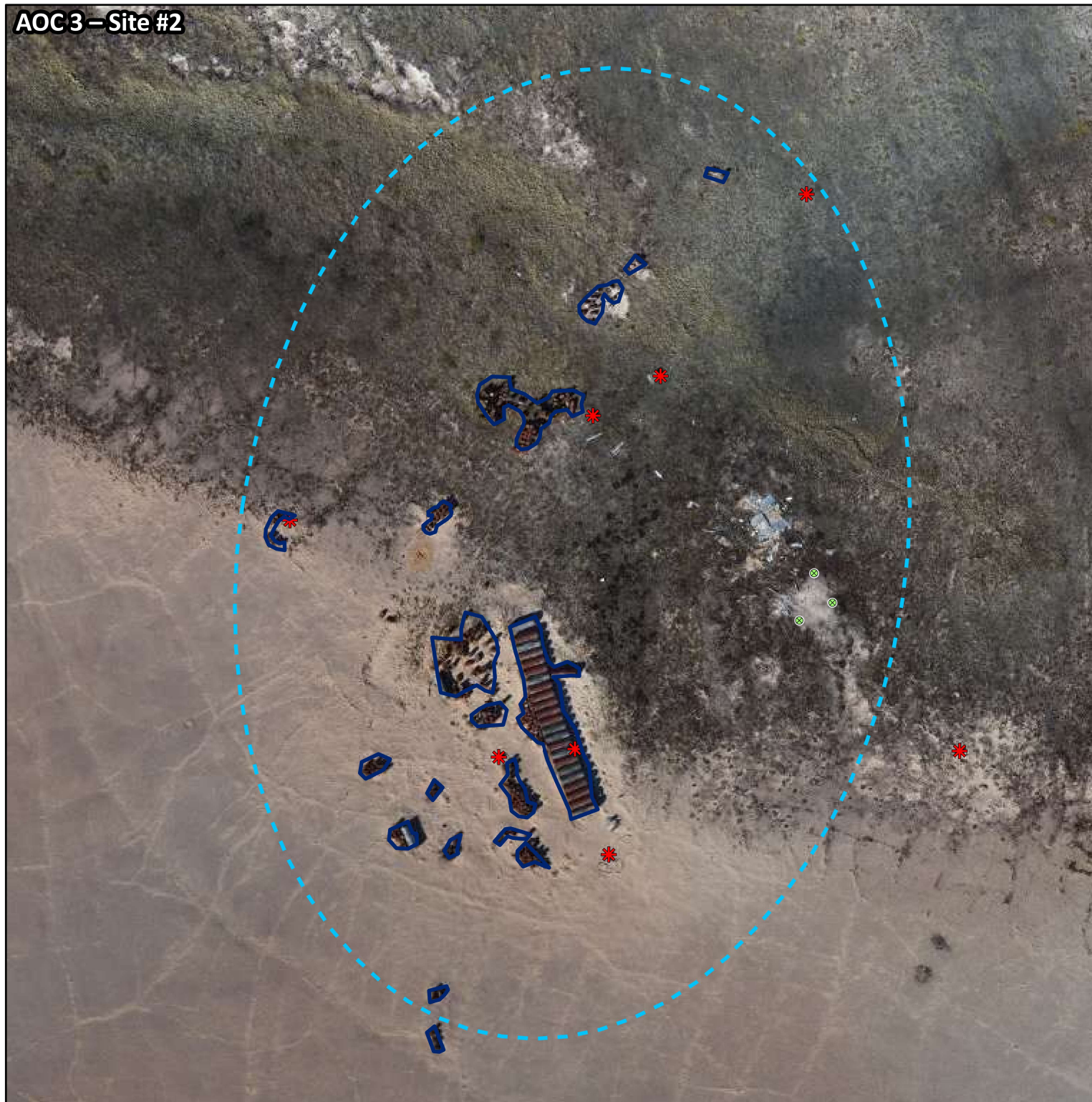
Debris in AOC 2 - Site #1



4916 49th Street,
PO Box 11086
Yellowknife, NT, X1A 1P3
TEL: (867) 873-3500
FAX: (867) 873-3499
Email: info@blumetric.ca
Web: <http://www.blumetric.ca>

PROJECT # 220515		DATE November 02, 2023	
DRAWN MB	CHECKED JB	FIG NO. 04b	REV 0

AOC 3 – Site #2



LEGEND

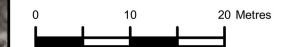
- Approximate Alignment of Airstrip
- ✱ Barrel/Tank Sample Location
- Barrel Areas
- Building
- AOC 1 - Campsite Area
- AOC 2 - Site #1
- AOC 3 - Site #2
- AOC 4 - Drinking Water Lake



1				
REV.	DESCRIPTION	YY/MM/DD	BY	CHK

REFERENCES

PROPRIETARY INFORMATION MAY NOT BE REPRODUCED OR DIVULGED WITHOUT PRIOR WRITTEN CONSENT OF BLUMETRIC ENVIRONMENTAL INC. DO NOT SCALE DRAWING. THIS DRAWING MAY HAVE BEEN REDUCED. ALL SCALE NOTATIONS INDICATED ARE BASED ON 8.5"x11" FORMAT DRAWINGS.



1:800



CLIENT

**Public Services and
Procurement Canada**

PROJECT

**Environmental Impact Assessment,
Pelly Lake Former Airstrip and
Former Fuel Cache Site, Nunavut**

TITLE

Debris in AOC 3 - Site #2



4916 49th Street,
PO Box 11086
Yellowknife, NT, X1A 1P3
TEL: (867) 873-3500
FAX: (867) 873-3499
Email: info@blumetric.ca
Web: <http://www.blumetric.ca>

PROJECT # 220515		DATE November 02, 2023	
DRAWN MB	CHECKED JB	FIG NO. 04c	REV 0

AOC4-Drinking Water Lake

LEGEND

- Approximate Alignment of Airstrip
- ✱ Barrel/Tank Sample Location
- Barrel Areas
- Building
- AOC 1 - Campsite Area
- AOC 2 - Site #1
- AOC 3 - Site #2
- AOC 4 - Drinking Water Lake



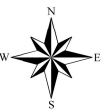
1				
REV.	DESCRIPTION	YY/MM/DD	BY	CHK

REFERENCES

PROPRIETARY INFORMATION MAY NOT BE REPRODUCED OR DIVULGED WITHOUT PRIOR WRITTEN CONSENT OF BLUMETRIC ENVIRONMENTAL INC. DO NOT SCALE DRAWING. THIS DRAWING MAY HAVE BEEN REDUCED. ALL SCALE NOTATIONS INDICATED ARE BASED ON 8.5"x11" FORMAT DRAWINGS.



1:2,000



CLIENT

**Public Services and
Procurement Canada**

PROJECT

**Environmental Impact Assessment,
Pelly Lake Former Airstrip and
Former Fuel Cache Site, Nunavut**

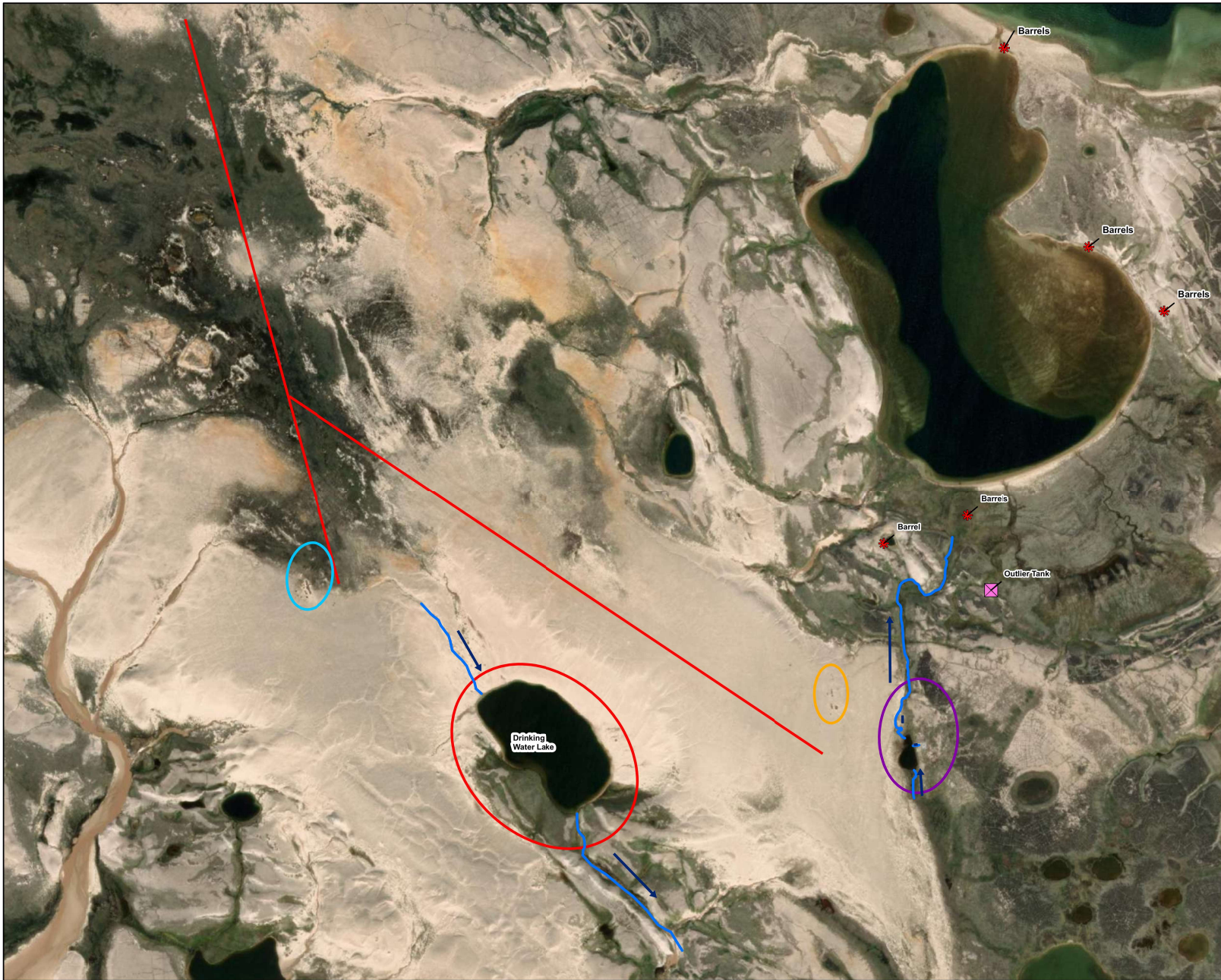
TITLE

Debris in AOC 4 - Drinking Water Lake

4916 49th Street,
PO Box 11086
Yellowknife, NT, X1A 1P3
TEL: (867) 873-3500
FAX: (867) 873-3499
Email: info@blumetric.ca
Web: <http://www.blumetric.ca>

PROJECT #	DATE
220515	November 02, 2023

DRAWN	CHECKED	FIG NO.	REV
MB	JB	04d	0



LEGEND

Areas Of Concern

- AOC 1 - Campsite Area
- AOC 2 - Site #1
- AOC 3 - Site #2
- AOC 4 - Drinking Water Lake

- Barrels
- Outlier Tank
- Approximate Alignment of Airstrip
- Stream outline
- Direction of Stream Flow

1				
REV.	DESCRIPTION	YY/MM/DD	BY	CHK

REFERENCES

PROPRIETARY INFORMATION MAY NOT BE REPRODUCED OR DIVULGED WITHOUT PRIOR WRITTEN CONSENT OF BLUMETRIC ENVIRONMENTAL INC. DO NOT SCALE DRAWING. THIS DRAWING MAY HAVE BEEN REDUCED. ALL SCALE NOTATIONS INDICATED ARE BASED ON 11"x17" FORMAT DRAWINGS.

0 160 320 Meters

1:8,000

CLIENT

Public Services and Procurement Canada

PROJECT

**Environmental Impact Assessment
Pelly Lake Airstrip and
Former Fuel Cache Site, Nunavut**

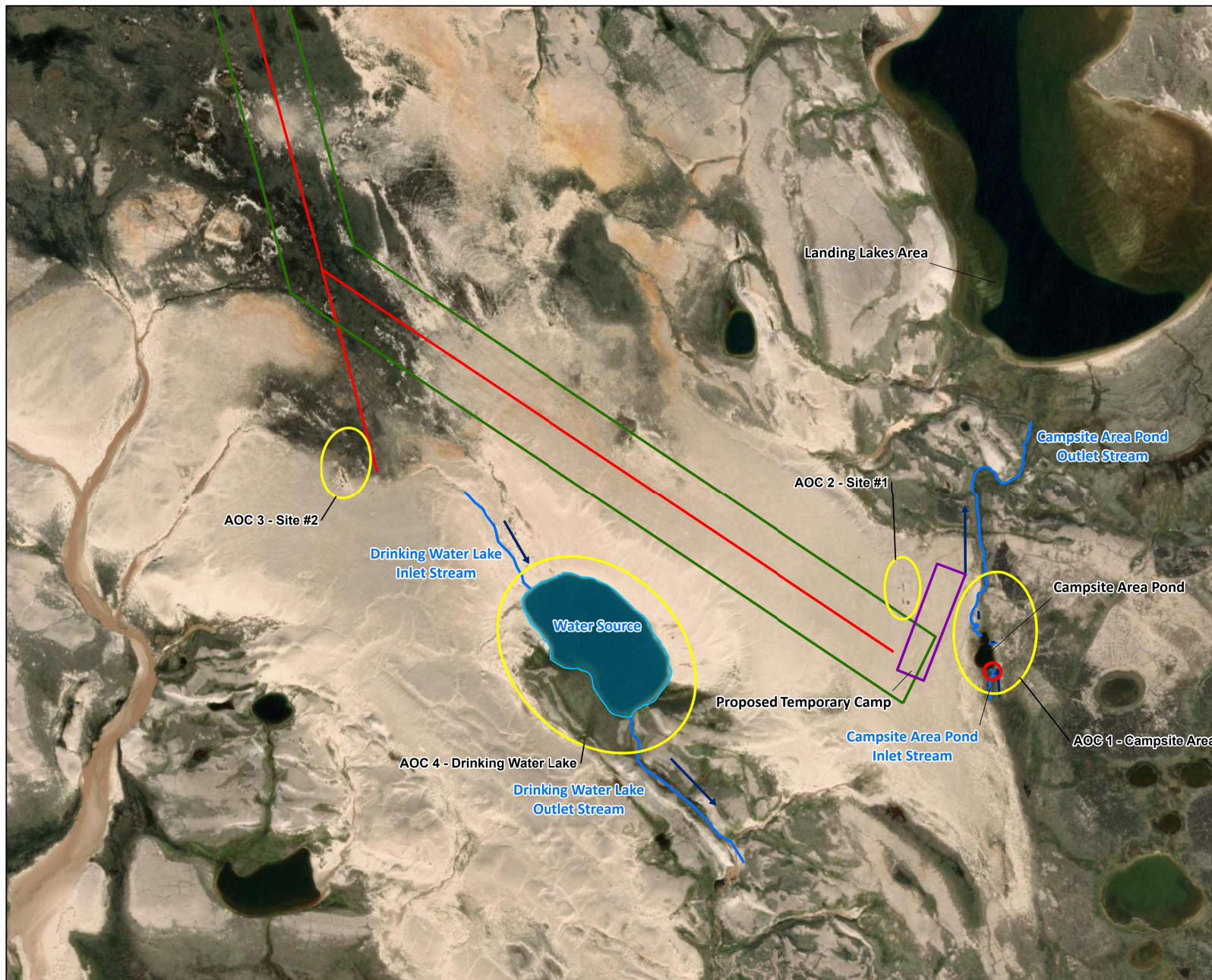
TITLE

Debris Outside AOCs

Blumetric™
Environmental

4916 49th Street,
PO Box 11086
Yellowknife, NT, X1A 1P3
TEL: (867) 873-3500
FAX: (867) 873-3499
Email: info@blumetric.ca
Web: <http://www.blumetric.ca>

PROJECT # 220515		DATE December 06, 2023	
DRAWN PB	CHECKED JK	FIG NO. 04e	REV 0



LEGEND

- Impacted Sediment Sample
- Approximate Alignment of Airstrip
- Stream outline
- Direction of Stream Flow
- Approximate Boundaries of Airstrip (From Air Photographs)
- Areas of Concern
- Proposed Temporary Camp including Fuel Storage and Staging Areas
- Water Source

1				
REV.	DESCRIPTION	YY/MM/DD	BY	CHK

REFERENCES
 PROPRIETARY INFORMATION MAY NOT BE REPRODUCED OR DIVULGED WITHOUT PRIOR WRITTEN CONSENT OF BLUMETRIC ENVIRONMENTAL INC. DO NOT SCALE DRAWING. THIS DRAWING MAY HAVE BEEN REDUCED. ALL SCALE NOTATIONS INDICATED ARE BASED ON 11"x17" FORMAT DRAWINGS.

0 150 300 Meters
 1:7,500

CLIENT
 Public Services and Procurement Canada

PROJECT
 Environmental Impact Assessment
 Pelly Lake Airstrip and
 Former Fuel Cache Site, Nunavut

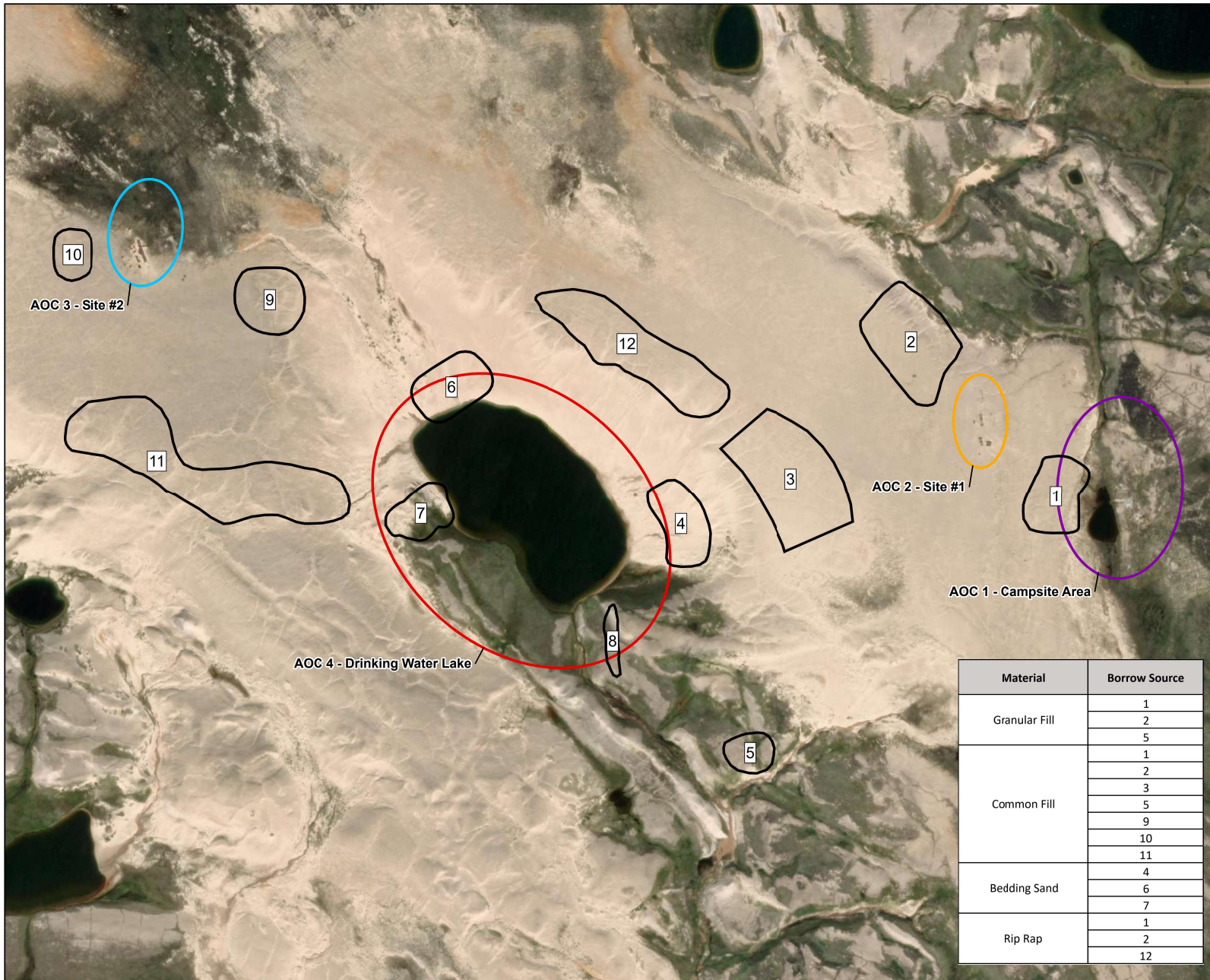
TITLE
 Proposed Work Areas

4916 49th Street,
 PO Box 11086
 Yellowknife, NT, X1A 1P3
 TEL: (867) 873-3500
 FAX: (867) 873-3499
 Email: info@blumetric.ca
 Web: http://www.blumetric.ca

PROJECT #
 220515

DATE
 December 04, 2023

DRAWN MB	CHECKED JB	FIG NO. 05	REV 0
--------------------	----------------------	----------------------	-----------------



LEGEND

- Approximate Alignment of Airstrip
- Borrow Sources
- AOC 1 - Campsite Area
- AOC 2 - Site #1
- AOC 3 - Site #2
- AOC 4 - Drinking Water Lake

1				
REV.	DESCRIPTION	YY/MM/DD	BY	CHK

REFERENCES
PROPRIETARY INFORMATION MAY NOT BE REPRODUCED OR DIVULGED WITHOUT PRIOR WRITTEN CONSENT OF BLUMETRIC ENVIRONMENTAL INC. DO NOT SCALE DRAWING. THIS DRAWING MAY HAVE BEEN REDUCED. ALL SCALE NOTATIONS INDICATED ARE BASED ON 11"x17" FORMAT DRAWINGS.

1:5,000

CLIENT

Public Services and Procurement Canada

PROJECT

Environmental Impact Assessment
Pelly Lake Airstrip and Former Fuel Cache Site, Nunavut

TITLE

Potential Borrow Source Locations

4916 49th Street,
PO Box 11086
Yellowknife, NT, X1A 1P3
TEL: (867) 873-3500
FAX: (867) 873-3499
Email: info@blumetric.ca
Web: http://www.blumetric.ca

PROJECT # 220515	DATE December 04, 2023		
DRAWN MB	CHECKED JB	FIG NO. 06	REV 0