



Existing Landfills – FOX-5

- Main Landfill
- Airstrip Landfill

UMC



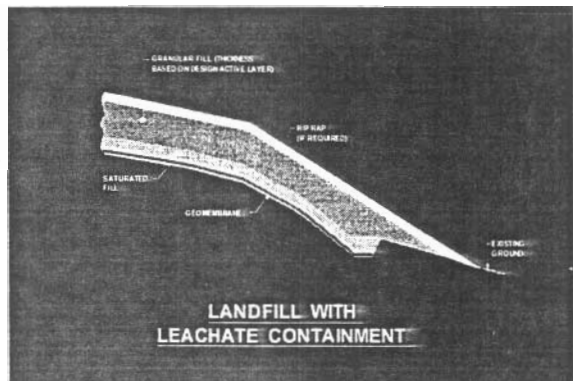
Existing Landfills

- Main Landfill – Moderate Risk
 - Leachate Containment Design
 - Cover with Liner
 - Place Fill to Develop Freeze-back
 - Cover Surface with Rip-Rap for Erosion Protection

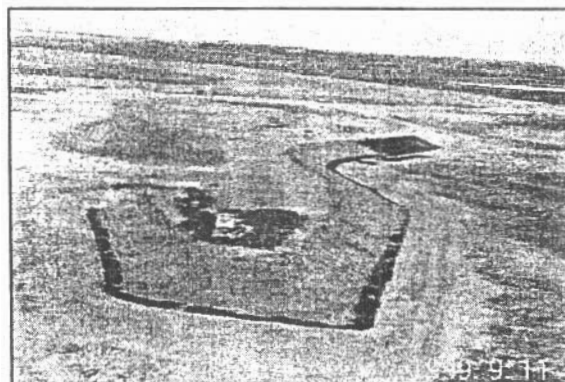
UMC



UMC




UMC




UMC

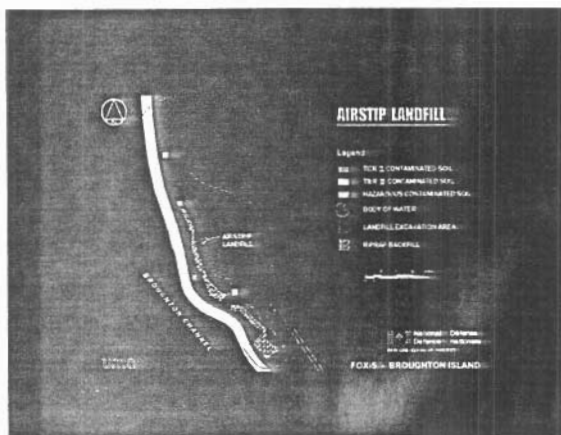
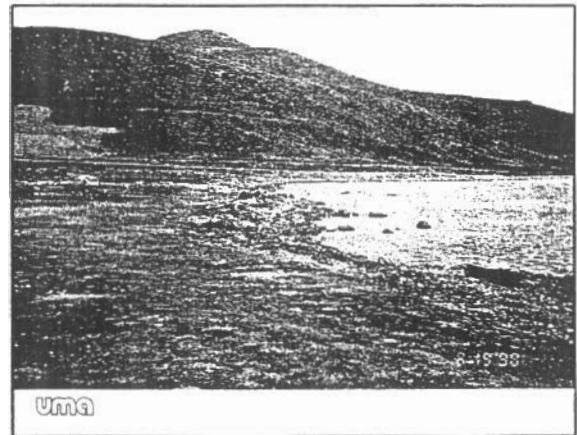


UMC

 **Existing Landfills**


- Airstrip Landfill
 - High Risk
 - Excavate







 **New Landfills – FOX-5**

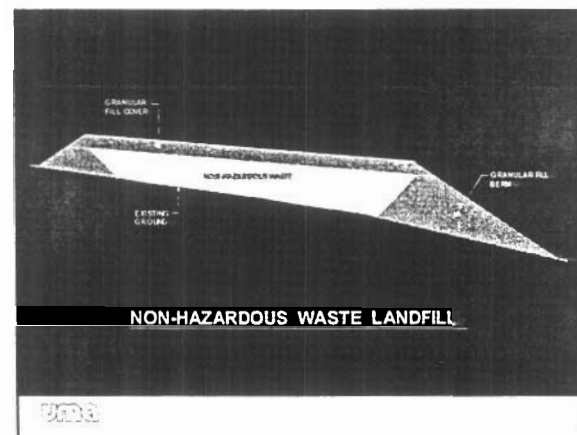
- Non-Hazardous Waste Landfill
 - Located at Station Area
- Tier II Disposal Facility
 - Located at Middle Site
 - Includes a Non Hazardous Waste Cell

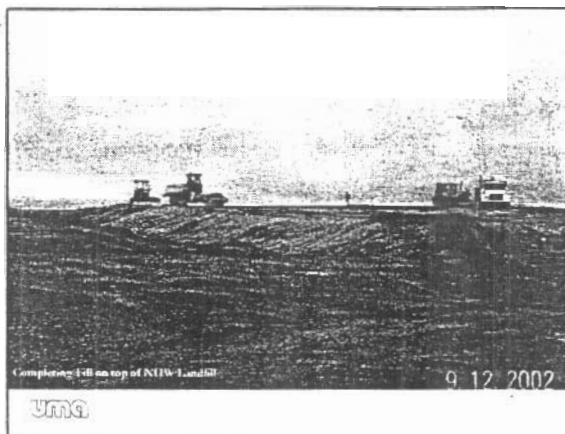


 **New Landfills – FOX-5**

- Non-Hazardous Waste Landfill for Disposal of:
 - Non Hazardous Demolition Materials
 - Non Hazardous Debris
 - Double Bagged Asbestos
 - Low Level Contaminated Soils

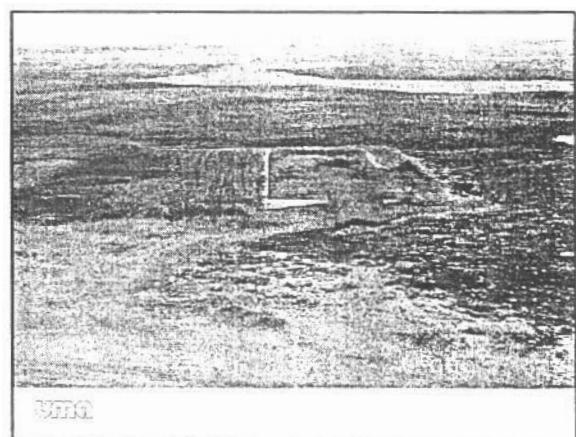
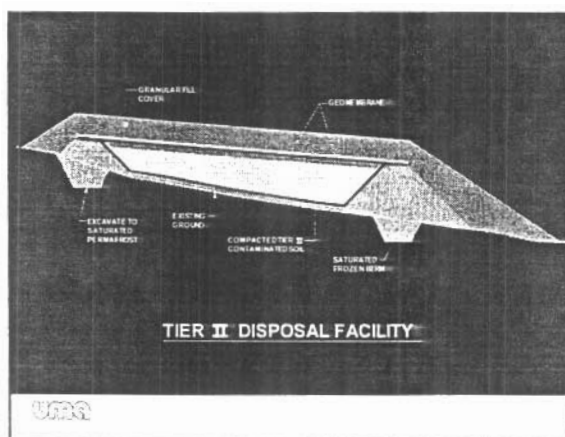






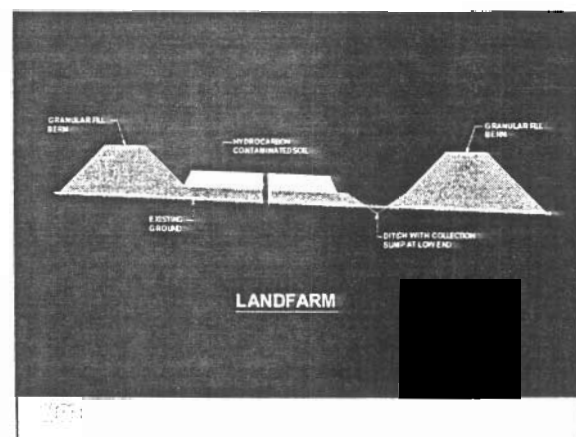
New Landfills – FOX-5

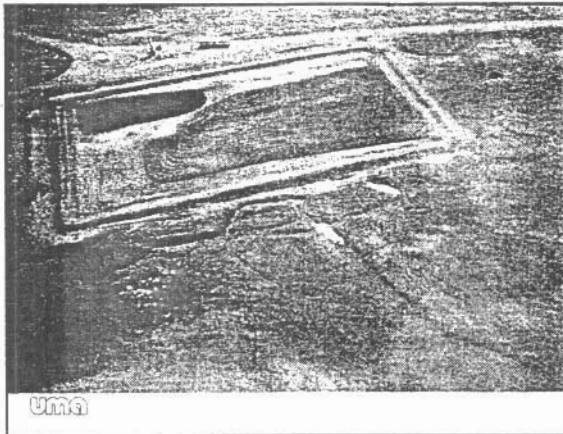
- Tier II Disposal Facility
 - Moderately Contaminated (Tier II) Soils
 - Designed for freeze-back of the contaminated soil
 - Frozen, icy berms
 - Incorporates an HDPE Liner System




Landfarms – FOX-5

- Treatment of Fuel Contaminated Soils in a Landfarm
 - Spread Fuel Contaminated Soil thinly over the Landfarm Area for Treatment
 - Two Landfarms are proposed, including one near the Airstrip and one at the Upper Site



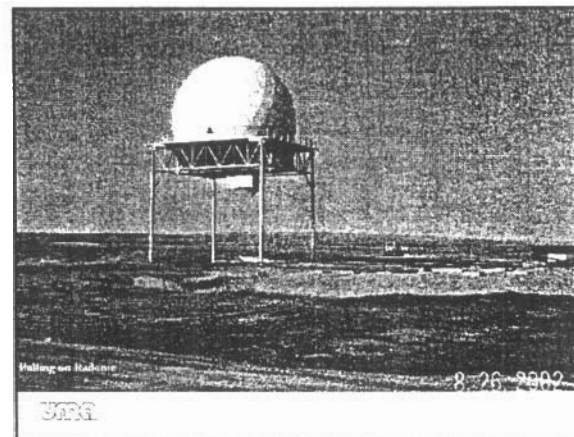
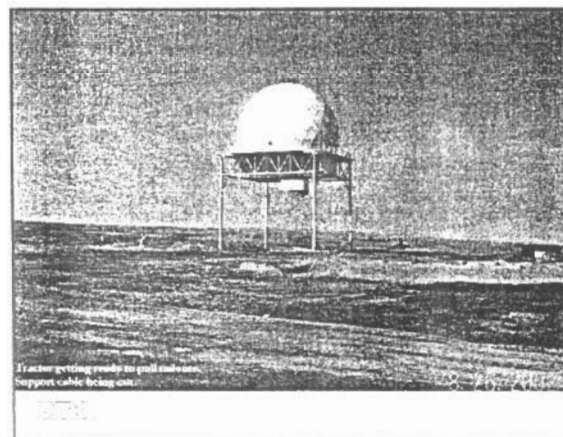
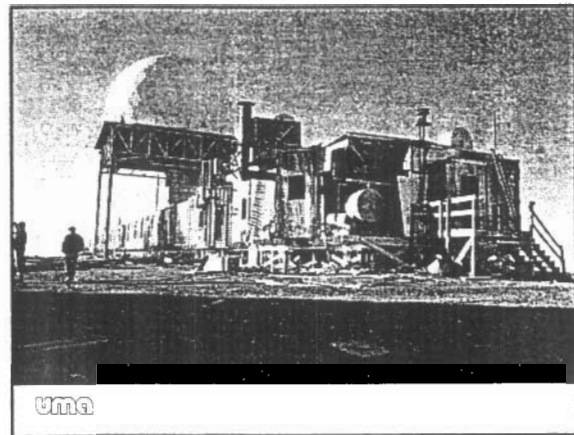
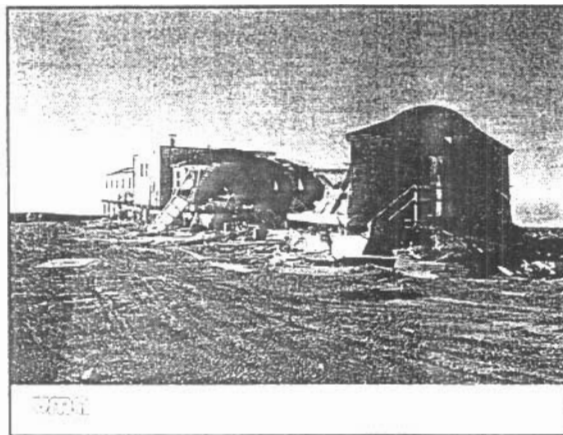


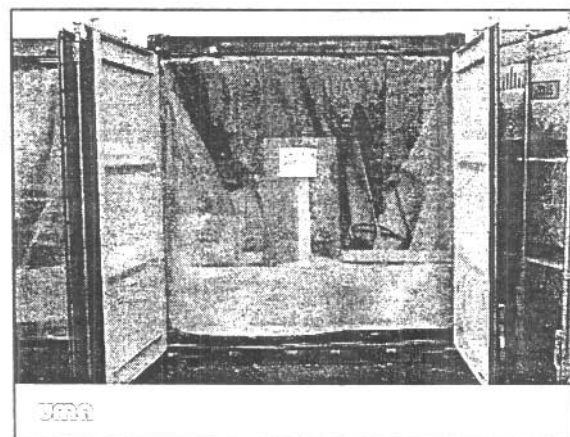
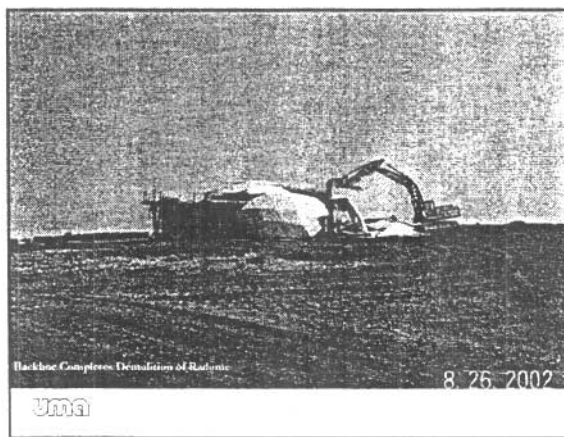
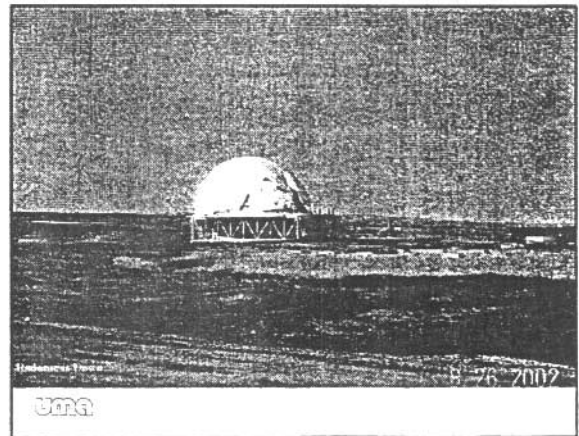
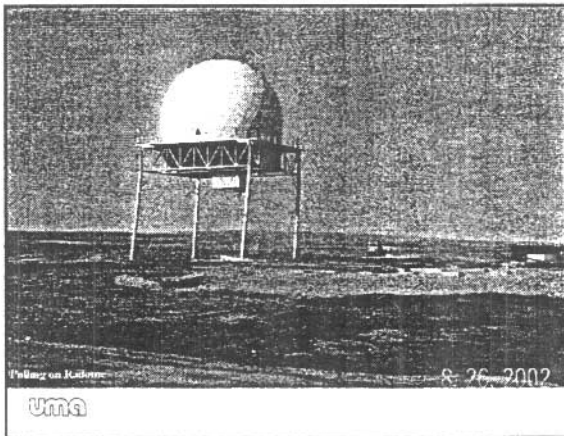


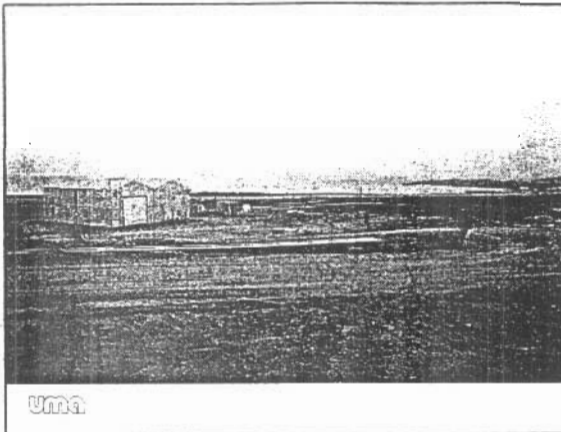
Engineering and Design

- Demolition and Debris Removal
 - Demolition of Buildings, Tanks and Structures
 - Collection of Scattered Site Debris
 - Disposal in Non Hazardous Waste Landfill
 - Hazardous Materials placed in Secure Containers for Disposal Off-site

UMA



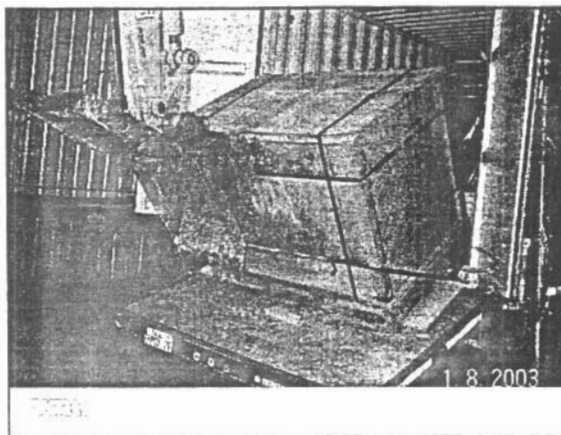




Engineering and Design

- Contaminated Soils
 - Hazardous Soil / Debris
 - Placed in Government Approved Containers
 - Shipped South for Disposal

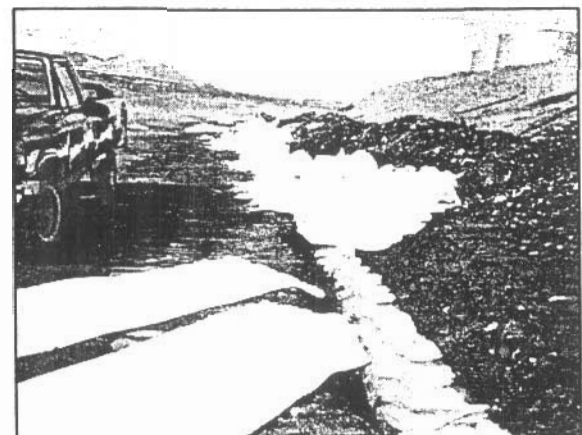
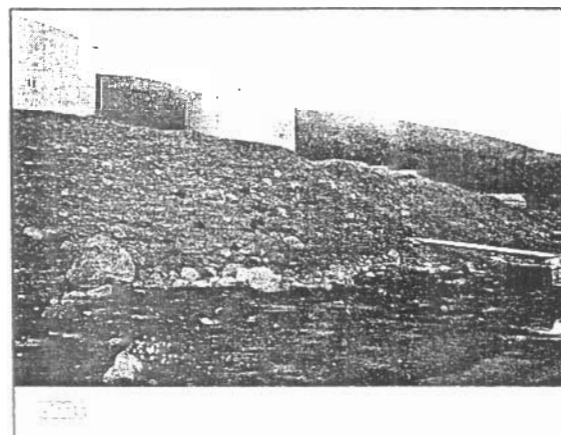
UMA



Engineering and Design

- Contaminated Soil
 - Hydrocarbon Contaminated Soils
 - Soils Contaminated with Fuel or Lube Oil
 - Hydrocarbon Contaminated Soils are Removed from Areas at Risk (Beach and Near Water Bodies)
 - Other Hydrocarbon Contaminated Soils are Partially Excavated or Covered with Clean Fill

UMA





Engineering and Design

- Construction Quality Assurance
 - Gravel Fill Requirements
 - Compaction
 - Enough moisture for frozen berms

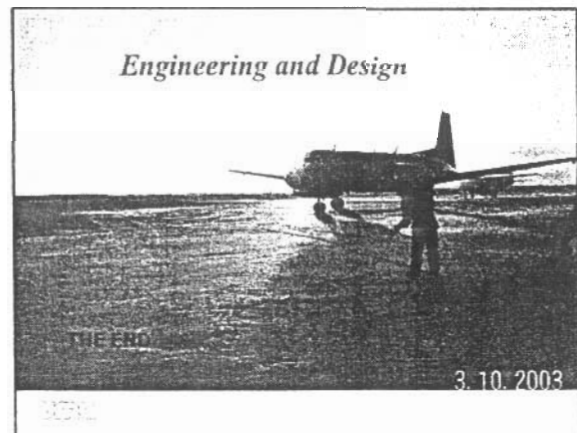
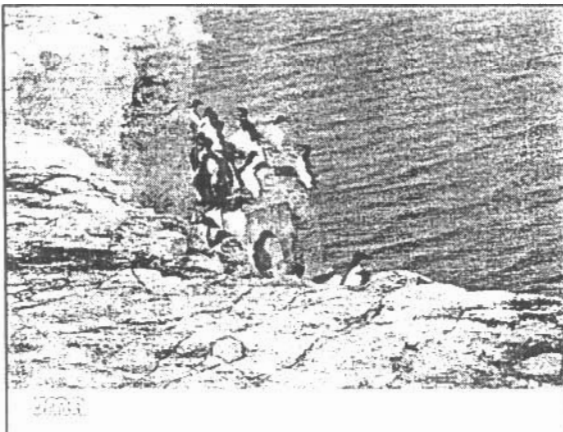
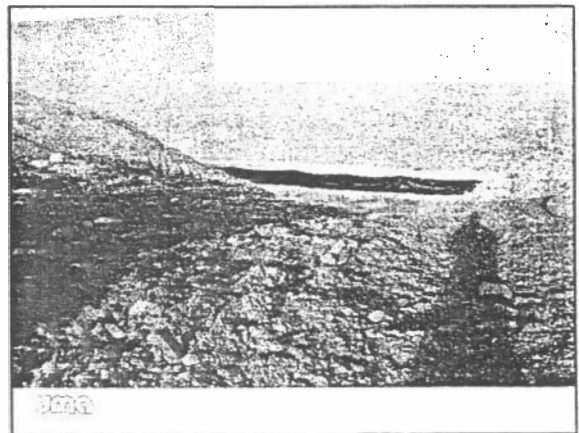
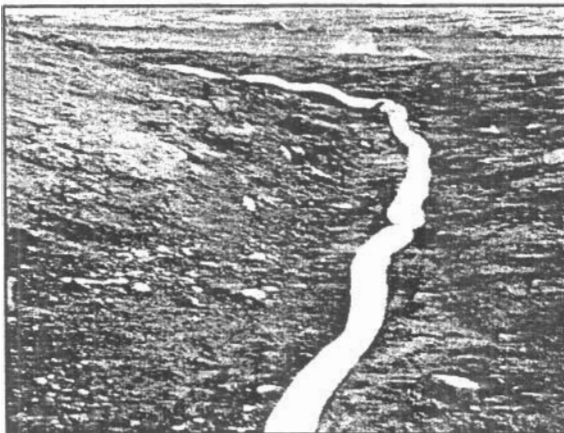
UMA



Engineering and Design

- Construction Issues
 - Environmental Protection
 - Erosion and Sediment Control
 - Maintenance of Hamlet Roads
 - Control Dust Creating Activities

UMA




 **DEW LINE CLEAN UP (DLCU)**


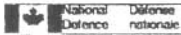
QIKIQTARJUAQ PUBLIC MEETING
FOR FOX-5 (Broughton Island)
July 3, 2003

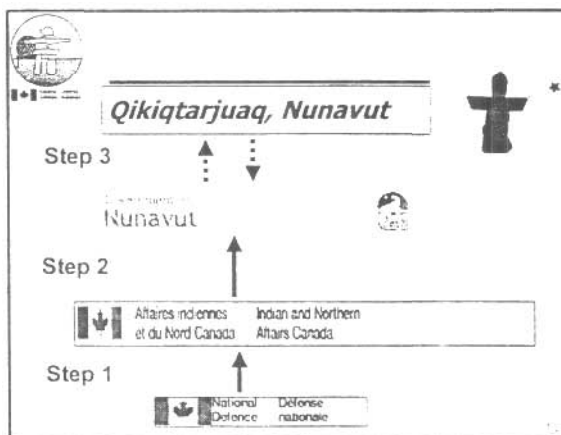
Speaker: Tania Guty


 

 **Purpose of the Presentation**

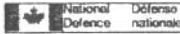
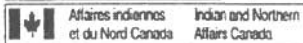
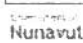
To Discuss the Land Transfer Process
once DND releases Reserved Land at
Fox-5 in Qikiqtarjuaq, Nunavut.


 




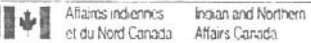
 **Step 1**


- DND informs DIAND that it would like to return the reserve
- DND must satisfy DIAND of sound environmental condition of land,
- DND keeps the Government of Nunavut informed.




 **Step 2**

- Government of Nunavut–Commissioner requests transfer of land from DIAND,
- DIAND must satisfy GN/Commissioner of satisfactory environmental condition of land,
- Commissioner accepts administration of land.

 **Step 3**

- Land is held by the Commissioner.
- Approval of local community must be received prior to anything being done with or on the property.
- Legal Property Survey of property and transfer to local municipality.



Project Schedule for FOX-5

- Contracting Process
- Solicitation of Interest closed February 18 for Pre-qualification.
- Tender period to begin in early March for 4-6 weeks.
- Letter of Intent issued to successful contractor to finalize participation plans.
- Contract awarded in Mid-June.

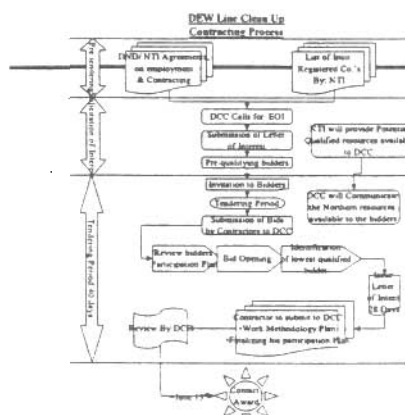
Defence Construction Canada Construction de Défense Canada



Project Schedule for FOX-5

- Actual Clean up Schedule
- Work anticipated to start late August, early September till early October this year.
- Clean up activities to occur over next 3 years ending in 2006.
- Long-term monitoring to be undertaken after clean up for 25 year period.

Defence Construction Canada Construction de Défense Canada



Questions?



National Defence Défense nationale

3. Group Discussion Summary

- Members of the community asked several questions related to training opportunities and the DEW Line Clean up Project. During the clean up at FOX-4 Cape Hooper, people were trained on the job, why is this not happening for this clean up? Questions were also asked if adjustments to the first year of the contract to give people more time to become qualified. Questions were also asked about having someone from the community trained as a Site Engineer. **Response:** On the job training at FOX-4 was conducted before the signing of the economic agreement between DND and NTI and was considered a one-time event. With the agreement in place, all contracts require that a minimum level of Inuit employment and contracting be obtained. As part of the economic agreement, DND provides NTI with funding to use for training. With this funding NTI tries to provide the training before the clean up. In regards to the Site Engineer normally these people are brought in temporarily within our organization from other offices.
- Questions also focused on the contracting process and how hiring of labour would take place. Questions were asked on the definition of Inuit within the economic agreement, was this definition meant to imply all Inuit within Nunavut or Inuit that were located closest to where the work was to take place. Some concerns were raised by the community regarding companies that call themselves Inuit but are located in the south and do not provide any benefits to the community. **Response:** The project stated that a contract for the work at FOX-5 had not been awarded yet and that rather than having several contracts for each clean up, the contracts are structured as a single contract awarded to one group to run the clean up with possibly several sub-contractors under their direction. In regards to the definition of Inuit, under the economic agreement, Inuit refers to all Inuit of Nunavut with priority given to local communities. However it was also stated that it would not be possible to guarantee that everyone would be hired, as everyone may not be qualified. As part of the contracting process, NTI provides a list of Inuit firms and Inuit labour in the region, this is included in the contract documents, so perspective contractors have an idea of the resources in the area when developing their proposals. NTI also provides a list of firms from their registry that are designated as Inuit firms for inclusion in the contract documents. It was mentioned during the meeting that at Pelly Bay, all men within the community were working on the clean up at CAM-4 and that the demand was so high people from other communities had to be brought in. The contracting process for the clean up is a public process, which allows any company that is qualified to submit a bid proposal for the work, DCC cannot exclude qualified companies from bidding on the project.

APPENDIX A: Detailed Meeting Notes

Hall Beach Community Meeting

Q: DND and NTI have agreed on \$750,000 for the training for the DEW Line sites. Will this amount cover the 6 years that the cleanup at FOX-M is supposed to take?

A: This amount is only for the Nunavut region and is intended for training purposes only. This amount will be split up into \$50,000 per site in the Nunavut region.

Q: What will happen to the smaller DEW Line sites?

A: The sites that are owned by the DIAND are not part of this project. For the DEW Line site, each site will be given \$50,000. We do not know what plans DIAND has for these sites.

Q: Will the cleanup be conducted only in the summer months or year round?

A: We will only work in the summer time when the ground is thawed.

Q: Since the work this year will not start until the sealift arrives, will you have enough time to do the work this year?

A: We don't expect much work to happen this year. The contractor will have to bring in a camp and equipment, so the first year is typically a mobilization year. We tell them when they have to be finished but we cannot give them a start date.

Q: For how many months will people be employed to do the work next summer?

A: Typically, the work lasts for 5 years from June to early October. This is based on what we know right now about the site. There is always the possibility that a contractor might take longer or less time than expected.

Q: How many locals will be employed?

A: There are two mechanisms included in the contract to ensure that Inuit are employed during the cleanup. A Minimum Inuit Employment Content (MIEC) and Minimum Inuit Content for Contracting (MICC). *[Administrative Note: A Minimum Inuit Employment Content (MIEC) will be set for each DEW Line Site. The MIEC for a Site is the minimum level of Inuit employment that DND requires the Contractor to achieve for the cleanup of that site. Depending on the site, the MIEC is typically within a range of 65-85. A Minimum Inuit Content for Contracting (MICC) will also be set for each Site. The MICC for a Site is the minimum level of Inuit business participation that DND will require the Contractor to achieve for the cleanup of that Site. Depending on the site, the MICC is typically within a range of 60-75%.]*

Q: Are local people allowed to bid on the contract?

A: DND cannot enter into a contract with individuals. Only incorporations can be given the contract.

- Q: Who has the contract for the cleanup?
- A: We have not awarded the contract yet. Right now, the tendering process has been initiated and we are waiting for proposals from potential bidders. We expect to have the contract by June.
- Q: So Mosher does not have the contract?
- A: No, Mosher does not have the contract. Last year we had to give the contract to Mosher because we were directed by Environment Canada to do the work quickly. Mosher was the only company able to work under our time frame.
- Q: Did you check with the Hamlet Council on what equipment was available in Hall Beach before you gave the contract to Mosher?
- A: We checked with the NTI. We can only enter into contracts with incorporations. We explored all options and that was the only one available.
- Q: If work were to be done off the DND owned land, would the landowner receive money?
- A: This is covered by a land use permit. We do not know at this stage, where the DND property boundaries are and who owns the land around the DND property. We will forward minutes and let you know more details on this.
- Q: Did the fuel contamination go into the permafrost?
- A: Normally contamination does not go into permafrost. We usually test the soil at depth to make sure that there is no contamination.
- Q: Do you have pictures of the land available from the time before the DEW Line started?
- A: We have air photos available from the time when the site was built and onwards, we haven't checked whether there are any earlier photos available.
[Administrative Note: ESG is currently running a search to see whether any air photos prior to construction are available]
- Q: Will surplus infrastructure be shipped out or will it be buried? There is a concern if they are buried because Inuit bury their food in the ground. Will this food become contaminated?
- A: All contamination will be excavated or covered with at least 30 cm of clean fill.
- Q: Some people in the community have worked on the DEW Line site and have good knowledge about the site. One person knows about areas where debris has been buried, which is now showing up at the surface.
- A: Landfills and debris areas are addressed during the cleanup.
- Q: Early in your presentation we saw a landfill being prepared and we saw a skin on the ground. Will there be a skin on top as well, and will there be more than the typical 1.2 m of gravel?

- A: Because FOX-M is so flat and the permafrost is very high, we will not excavate pits for landfills. We will put a liner on the ground, then put the materials in and cover it up with another liner at the top. In addition we will add 1.8 m of fill on top to ensure that the permafrost is coming up again. This represents a layer of safety. The other type of landfill will be for non-hazardous materials and we will only place fill material on top.
- Q: Jonah has been with the DEW Line for 23 years. He knows that some of the debris has been thrown into the lakes and the ocean. Will something be done about this?
- A: Scientific studies have shown that it was mostly metal debris, which is not harmful to the environment, fish or other sea animals.
- Q: There is a tank that holds the water from the excavations on site; will this be a problem under freezing conditions?
- A: No, we wouldn't have filled it to the extent that it could burst.
- Q: If there was a spill in 1963, will it still be here today?
- A: This will depend on how much was spilled, on the soil type and on the type of material that was spilled. Fuel does disappear with time, but it might take along time. Dr. Ingham will explain this during his presentation.
- Q: During the work that was done last year, did you remove any seaweed from the beach area?
- A: Everything that is shown in the green area on the drawing was excavated. If it were right on the beach, we wouldn't have done anything about it. If the concern is that there is fuel in the seaweed; studies have shown that fuel contamination does not go into plants, even when these plants grow on highly contaminated soils. The concentrations that seaweed would be exposed to would be much smaller. There is no expected risk to local people by seaweed.
- Q: What about high places in the arctic like DYE-M and FOX-5 on barren rock? How do you determine contamination there?
- A: In places where there are mostly rock, we will look at where the contamination could have gone and sample the soil closest to the rocky area. This is a lot more difficult than at FOX-M.
- Q: I know that there have been lots of landfills at FOX-M. Have you found all of them?
- A: We cannot be 100 % sure, but if there are any that we haven't found yet, they are well covered. We are doing something about the ones we have found.
- Q: There are many people here who have worked at the DEW Line site who haven't been interviewed.

- A: That is true, we cannot speak to everyone. During the cleanup, people working on the site will have another opportunity to point things out that might be of concern. We certainly have tried our best to contact as many people as possible in the past.
- Q: Will you scrape any PCB paint off the antennas?
- A: If any buildings were staying on site, the paint would have to be removed or secured to ensure it does not get into the environment.
- Q: Can you estimate how much PCB paint is on the site?
- A: The estimated amount of demolition material is about 500 m³. No hazardous soil exceeding the levels set by the Canadian Environmental Protection Act (CEPA) has been found at FOX-M. But we did find some soil exceeding the Tier II level set by the DEW Line Cleanup Protocol. This soil will go into a special disposal facility.
- Q: Will this material be buried by gravel or sand?
- A: We will use gravel from the beach ridge, with finer material below to ensure freezing of the ground.
- Q: Three of the Amco buildings will be demolished and one will be left behind, why?
- A: This building has been designated as a heritage site.
- Q: Has it been taken into account that the permafrost varies from year to year and have you thought about global warming?
- A: The design has taken global warming into account. No hazardous materials will go into the new landfills on site.
- Q: Will you be cleaning up the site around the cabins or will you take gravel from there?
- A: We will remove any buried debris and dispose of it accordingly.
- Q: Will you be demolishing the cabins in this area?
- A: We are not planning to disturb the cabins.
- Q: Will it hurt the cabins or the access road if you are taking gravel from this area?
- A: We will not be taking gravel from very close to the cabins.
- Q: Will you ship the demolished Amco buildings out or will you bury them?
- A: Hazardous material will be shipped south. A small part will be buried in a landfill.
- Q: Why can't you take gravel from the east side and leave the west side where the cabins are?
- A: The areas on the east side are already depleted. We would prefer to take gravel from the DND reserve but it is depleted.

- Q: Do you know whether the gravel you need is on the crown land or municipal land?
- A: Our property lawyers are looking into the boundaries at the moment.
- Q: If the gravel is on municipal land, would we be able to charge under the quarry permit?
- A: Our lawyers are looking into this at the moment.
- Q: You are cleaning up debris on DND land. What about the north end of the lake? We know that there is a lot of debris there?
- A: This land is currently not on DND reserve. The project has asked for authorization to investigate off-site.
- Q: The road along the north pallet line is a public access road. What is the type of contamination on this road?
- A: All hazardous materials will be packaged before being shipped. Any areas of contaminated material excavation will be cleaned and we will make sure that we leave nothing behind.
- Q: What about the dust that will be created during the cleanup?
- A: The contractor is required to include dust suppression. This is outlined in the environmental protection plan of the contract.
- Q: It might be a good idea for the contractor to built their own road for work on a landfill off-site to reduce potential accidents during the summer period where fishing takes place 24 hours a day.
- A: Safety is our first priority. Measures will be put in place to prevent any accidents in areas where debris is located next to the road and where we need to work on the road.
- Q: A small stream just past the old water reservoir is eroding the road. Will you maintain the road?
- A: The contractor would maintain the road while they are using it.
- Q: How much contaminated soil will you remove this year?
- A: Probably none since the contractor will have to set up a camp for their workers. The contractor might start and crush some gravel for the next season.

Gjoa Haven Community Meeting

- Q: DND and NTI have agreed on \$750,000 for the training for the DEW Line sites. How will this affect local employment and training?
- A: DND gives this amount to the NTI for training as part of their agreement. In addition there are two mechanisms included in the contract to ensure that Inuit are employed during the cleanup. A Minimum Inuit Employment Content (MIEC) and Minimum Inuit Content for Contracting (MICC). *[Administrative Note: A Minimum Inuit Employment Content (MIEC) will be set for each DEW Line Site.*

The MIEC for a Site is the minimum level of Inuit employment that DND requires the Contractor to achieve for the cleanup of that site. Depending on the site, the MIEC is typically within a range of 65-85 %. A Minimum Inuit Content for Contracting (MICC) will also be set for each Site. The MICC for a Site is the minimum level of Inuit business participation that DND will require the Contractor to achieve for the cleanup of that Site. Depending on the site, the MICC is typically within a range of 60-75%.]

Q: Will People from Gjoa Haven be included in the work rather than people from Cambridge Bay?

A: We cannot tell the contractor whom to employ. We try to put restrictions in the contract to ensure minimum Inuit employment.

Q: Has the contract been awarded yet?

A: We have not awarded the contract yet. Right now, the tendering process has been initiated and we are waiting for proposals from potential bidders. We expect to have the contract by June.

Q: Will the community be made aware of the tender and the contractors?

A: We can ensure that the community is made aware and provide a list of contractors.

R: The community will appreciate receiving this information.

Q: Has any soil been tested outside of the DEW Line site at the fishing areas?

A: People from the community were present on site during the site investigation and have pointed out areas of concern.

Q: Would it be possible to move some buildings from the site to Gjoa Haven?

A: Some buildings have high levels of contamination in the paint. When these buildings will be demolished the materials will be packed in barge containers and shipped away for disposal. Some buildings might be available for removal or salvage and be moved to a new location. A request would need to be made and to ensure safety the available information for these buildings would be reviewed by scientists and engineers.

Q: Since other communities use a radome from the DEW Line, perhaps the CAM-2 one could be moved to Gjoa Haven?

A: There are contaminants in the material. Please let the contractor know of your interest in the building. If there are no contaminants then the building could be moved.

Q: Are the results for the building materials compared to the DEW Line Cleanup Criteria that you have presented?

A: No, these criteria are for soil only. There are other criteria for building materials and paint that need to be used.

- Q: Will the contaminated soil be incinerated?
A: Most of the soil will be buried. Some materials will be incinerated at a special facility in Alberta.
- Q: Is the airstrip landfill located on the airstrip and does this pose a problem?
A: The landfill is located about 200 m west of the airstrip. The airstrip itself is not a landfill.
- Q: Where do the contaminated materials go?
A: This will be addressed in my presentation. I will be happy to answer this if you till have questions at the end of my presentation.
- Q: Non-hazardous materials like wood will go into a landfill. Will anything be burned as part of the cleanup?
A: Generally, we don't burn anything other than camp waste on site. We have shipped materials to Swan Hills in Alberta to be incinerated at very high temperatures.
- Q: I used to work on the DEW Line and know that things were thrown into the ocean and that vehicles were driven onto the ice. I also had to bury oils and drums with other liquids. Have you found them?
A: Scientific studies have shown that the debris thrown into the ocean was mostly metal debris, which is not harmful to the environment, fish or other sea animals. We have done a very thorough investigation on land and hope to have found everything. You are welcome to look at our drawings to make sure that we have captured the area you are concerned about. [*Administrative note:* This area was identified on the drawing and it was confirmed that this contamination had been captured during the site investigation.]
- Q: What about the small DEW Line site that was closed in the 1960s?
A: The small sites are owned by the Department of Indian and Northern Affairs (DIAND) and are not part of this project. We do not know what plans DIAND has for these sites.
- Q: How often will the landfills be monitored?
A: Depending on the landfill every year or every two years for soil, water and any visual changes. After the first five years we will come back less often.
- Q: At what temperature will the liner break?
A: I have been told that it will be stable down to -40 degrees. We will install the liner in the summer so that it won't break in wintertime because it won't have to move at these low temperatures. I also have a sample of the liner here to show you. [*Administrative note:* The liner sample was passed around.]
- Q: Where would you go to find your gravel?

A: We will try and get everything from the DND reserve. There might be small areas that are not owned by DND.

Q: Will the airstrip be left behind?

A: Yes, it will stay but it won't be maintained.

Q: We would feel better if the old vehicles in the ocean were removed.

A: The Ocean is not the best place for them. But scientific studies have shown that leaving them behind does not cause any harm. We will remove anything that is within 30 m of the shore or within 2 m depth because it is a navigational hazard.

Q: How much money will the cleanup cost? Could you split this up by environmental, labor, equipment and so on?

A: I am not in a position to do so.

Q: Were there any studies on whether the vehicles in the water will harm the fish?

A: Studies have been conducted at three sites to show that fish or other animals are not harmed.

Q: Have you found the buried fuel near the airstrip?

A: We have found contaminated soil in this area.

Q: There was a lot of fuel buried where the tanks used to be.

A: Yes, we have found it.

Q: There were also lots of drums near the terminal.

A: Please come and have a look at the drawings after the presentation.

[*Administrative note:* This area was identified on the drawing and it was confirmed that this contamination had been captured during the site investigation.]

Qikiqtarjuaq Community Meeting

Q: During your presentation you mentioned that there would be a monitoring program for the landfills after the clean-up is finished. Have you been back to Cape Hooper and do you know that polar bears have destroyed some of the equipment on site?

A: We have been back at Cape Hooper to inspect the landfills. Last year a team was supposed to go in but couldn't get to the site because of bad weather. This year another team will go in and fix the broken equipment. We will probably go to Cape Hooper every year for the next three years. (WI)

Q: The community has not been informed that landfill monitoring is still happening at Cape Hooper.

A: A team will collect samples and an environmental working group that represents both NTI and DND looks at the data to determine whether the landfills are still

working. The community can be informed about the results of these monitoring visits. (WI)

Q: Does 'Inuit' in your presentation refer to all Inuit of Nunavut or only to local Inuit?

A: Inuit refers to all Inuit of Nunavut. Thomasie will give you a better answer. (SH)

A: The priority will be given to the local Inuit but it is not possible to guarantee that everyone will be hired, because not everyone will be qualified. (TA)

Q: You are once again turning your back to us. Just because not everyone will be qualified the young people will not get a chance to work on the DEW Line site.

A: Training money has been made available. (TA)

Q: Training opportunities should be made public for the community. DND should train us.

A: DND does not train people but gives money to the NTI to be used for training.

A: Thomasie answered but the answer was not translated back into English.

Q: When we worked at Cape Hooper we were trained on the job. Why can you not hire people with little experience and train them while they are working?

A: NTI is trying to provide certain types of training beforehand. (TA)

A: Cape Hooper was started in 1996, which was before the economic agreement was signed. After the signing it was specified how much training was provided for all of Nunavut. Cape Hooper was a one time only event. (WI)

Q: A local resident voiced his concerns over the working conditions during the clean-up of Cape Hooper. Workers did not feel they were properly informed or trained to handle contaminated materials and were rushed to complete the job.

A: Workers should be aware that the contaminant levels in the soil are not very high. There should not be a concern for people working during the clean-up of FOX-5. However, asbestos is also present in the building materials. This will require special handling procedures. The Health and Safety aspect is important to the project and the contractor is always made aware that he has to adhere to strict rules. (WI)

Q: We only now learned that some of our soil is contaminated. This is the first time that I hear about this. DND owes us an apology.

A: I personally have been in Qikiqtarjuaq several times to inform the community. We are certainly trying to remove the contamination from the land. We are sorry if there are some people in the community who have not had all the information. (WI)

Q: Although we have asked many times for DND to come and clean-up the site, we haven't seen any action yet. Since a class 3 drivers license is often required to work on the site, not many people from the community will be able to find work. There will be more white people coming into town. Can you make adjustments for the first year of the clean-up to give people a chance to get qualified?

- A: The hiring is done by the contractor. We can only ensure that the minimum employment and contracting levels for Inuit are met. (SH)
- Q: In previous years the big corporations like QC or Nunasi have gotten the contracts. This has not benefited the communities. Can DCC consider this when the contract is awarded?
- A: QC or Nunasi have not been involved for this site. I am not a contractor but will pass this concern over to the contracting authority. (SH)
- Q: Some people just add Inuit to their name but have offices in the South.
- A: NTI has a list of registered Inuit firms. In the Agreement for FOX-5 it states that 77% of employees have to be Inuit. At Pelly Bay all local men have worked on-site, but that was not enough to meet the required number of workers. So other people had to be brought in. (TA)
- Q: Inuit own QC, however, we don't see anything beneficial to the community.
- A: QC are currently 7% Inuit. Soon QC will be 100% Inuit. I cannot say more because of a conflict of interest. (TA)
- Q: Will the contract be presented as a whole or will it be broken into sections?
- A: One company will run the clean-up. They may have sub-contractors who will work under their direction. (SH)
- Q: Will the NTI be able to inform contractors or sub-contractors on who can be hired?
- A: As part of the contracting process NTI provides the contractor with a list of Inuit firms and Inuit labour. This list is included in the contract so that the contractor has an idea on who is available. (SH)
- Q: I was very happy to hear what you had to say about the site. I am happy that you have given us the whole story and that something will finally happen. I am sure that everything will be looked after very well.
- A: Thank you.
- Q: I would like to thank you for coming to Qikiqtarjuaq. There are a few people who have passed away due to cancer. We hope that after the clean-up there will be less cancer in the community.
- Q: Who will be the contractor?
- A: The contract hasn't been awarded yet. Delegates from the contractor will come to your community and give you a presentation. (SH)
- Q: Will the fellow short person (Barry Fedorak) be involved in the clean-up?
- A: I am a designer for the project and will ensure that the contractor is performing according to the expectations. (BF)

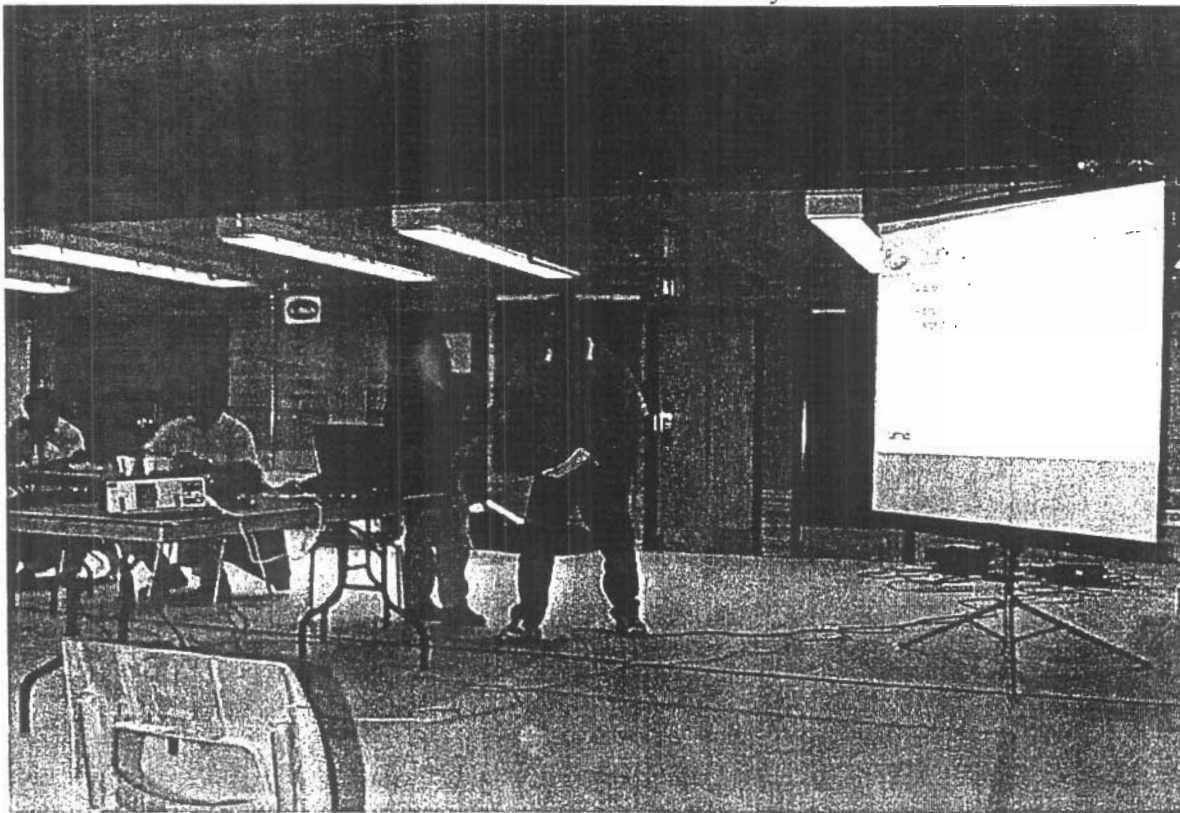
Q: Are you the site engineer?

A: No, DCC will hire another engineer who will oversee the work on site. But I will be available to support this engineer. (BF)

Q: Can you train someone to become the engineer?

A: Normally the site-engineer comes from within our own organization. (SH)

Presentations to the Community



Members of the community in attendance at the meeting

