



## Resolute Bay, Nunavut

i

## TABLE OF CONTENTS

	PAGE
<b>1. INTRODUCTION .....</b>	<b>1</b>
1.1 OBJECTIVE .....	1
1.2 PROJECT DESCRIPTION .....	2
<b>2. POLICIES AND WORKPLACE RIGHTS .....</b>	<b>3</b>
2.1 SAFETY STATEMENT .....	3
2.2 HARASSMENT POLICY .....	4
2.3 DISCIPLINARY POLICY .....	5
2.4 WORKPLACE RIGHTS .....	6
2.4.1 <i>Right to know</i> .....	6
2.4.2 <i>Right to participate</i> .....	6
2.4.3 <i>Right to refuse unsafe work</i> .....	6
<b>3. SAFETY RESPONSIBILITIES AND COMMUNICATIONS .....</b>	<b>7</b>
3.1 LINE OF COMMUNICATION .....	7
3.2 SAFETY RESPONSIBILITIES .....	8
3.3 COMMUNICATION DEVICES .....	8
3.3.1 <i>Satellite phones and internet</i> .....	8
3.3.2 <i>FM radio</i> .....	8
3.4 EMERGENCY PHONE NUMBERS .....	9
<b>4. SAFE WORK PRACTICE AND SITE RULES .....</b>	<b>11</b>
4.1 DRESSING, HYGIENE AND BEHAVIOR .....	11
4.2 WILDLIFE .....	11
4.3 WORKS WITHIN AND AROUND CONTAMINATED SITES .....	12
4.4 FLAMMABLE LIQUIDS .....	12
4.4.1.1 Precautions .....	12
4.5 CORROSIVE LIQUIDS .....	13
4.5.1.1 Precautions while charging a battery .....	13
4.6 COMPRESSED GASES .....	14
4.6.1.1 Precautions .....	14
4.7 DUST, FUMES, GASES AND VAPOURS .....	15
4.8 POWER TOOLS .....	15
4.9 MATERIAL HANDLING .....	15

4.10	ELECTRIFIED APPARATUS .....	16
4.11	EXCESSIVE NOISE.....	16
4.12	CUTTING OR WELDING.....	17
4.13	VEHICLES AND EQUIPMENT USAGE .....	18
<b>5.</b>	<b>CAMP RULES (HOTEL).....</b>	<b>19</b>
5.1	GENERAL REGULATIONS .....	19
5.2	ROOMS.....	19
5.3	SPECIAL DIET, HEALTH PROBLEM AND MEDICAL SUPPORT .....	20
5.4	COMMUNICATIONS .....	20
5.5	MEAL SCHEDULE .....	20
5.6	PASTIMES.....	20
5.7	ENVIRONMENT.....	21
5.8	SAFETY .....	21
<b>6.</b>	<b>HAZARD IDENTIFICATION FOR CONSTRUCTION ACTIVITIES.....</b>	<b>22</b>
<b>7.</b>	<b>PERSONAL PROTECTIVE EQUIPMENT (PPE) .....</b>	<b>23</b>
7.1	SITE REQUIREMENTS .....	23
7.1.1	General activities.....	23
7.1.2	Specific activities.....	23
7.2	DRESSING AND UNDRESSING PROTOCOL .....	24
7.3	PERSONAL HYGIENE .....	25
7.4	TRAINING.....	25
<b>8.</b>	<b>SAFETY MEETINGS, INSPECTIONS AND REPORTS .....</b>	<b>27</b>
8.1	WORKER ORIENTATION SEMINAR.....	27
8.2	JOB HAZARD ANALYSIS.....	27
8.3	WEEKLY GENERAL SAFETY MEETINGS .....	27
8.4	TOOL BOX MEETINGS .....	28
8.5	INSPECTIONS .....	28
8.6	REPORTS.....	28
<b>9.</b>	<b>CONTINGENCY AND EMERGENCY RESPONSE PLAN.....</b>	<b>29</b>
9.1	MEDICAL EMERGENCY PROCEDURES.....	29
9.2	FIRE.....	30
9.2.1	Fire at the camp facilities (hotel) .....	30
9.2.2	Fire on site.....	30
9.3	WILDLIFE THREAT .....	30
9.4	SPILL .....	30
9.5	AIRPLANE MISSING .....	30
<b>10.</b>	<b>SPILL CONTINGENCY PLAN .....</b>	<b>31</b>
10.1	STORAGE.....	31
10.2	EXISTING ON SITE FUEL CONTAINERS OR RESERVOIRS .....	31
10.3	REFUELING.....	31
10.4	PROCEDURES IN CASE OF SPILL .....	32
10.5	LINE OF COMMUNICATION .....	32
10.6	EMERGENCY PHONE NUMBERS .....	32

10.7	GENERAL PROCEDURES .....	33
10.8	SPECIFIC PROCEDURES FOR DIFFERENT ENVIRONMENTS .....	33
10.8.1	<i>Spill on land</i> .....	34
10.8.2	<i>Spill on ice and snow</i> .....	34
10.8.3	<i>Spill on Muskeg</i> .....	34
10.8.4	<i>Spill in water</i> .....	34
10.8.5	<i>Spill in rivers and streams</i> .....	34
10.9	REPORTING.....	34
10.10	TRAINING.....	35
<b>11.</b>	<b>WILDLIFE MANAGEMENT PLAN.....</b>	<b>36</b>

## **APPENDIX**

### APPENDIX 1:

- Acceptance Policy

### APPENDIX 2:

- Hazard assessment sheet
- Incident report form
- Inspection report form
- NT-NU Spill Report Form

### APPENDIX 3:

- Figure 1
- Figure 2

## 1. INTRODUCTION

The purpose of this document is to present the health and safety plan (HSP) elaborated for the Landfills Remediation Project in Resolute Bay, Nu.

The remediation project was awarded to Kudlik Construction Ltd in June 2018. At the end of August 2018, heavy equipment and material will be delivered by sealift to Resolute Bay. The first remediation season will start in August 2018 and all site work will be completed during the summer 2019.

Figure 1: Site location



### 1.1 OBJECTIVE

The objective of the HSP is to inform and protect all personnel and visitors who will gain access to the work site regarding potential and known hazards on the site. In particular, the intent of the health and safety program is to prevent and minimize exposure of workers to contaminants and to protect the public against any hazards or nuisance originating from the site.

The actual HSP describes the potential hazards, identifies the personnel and qualification of personnel in charge on site and outlines the procedures to be followed during the project.

The activities planned are subject to the "Nunavut Safety Act and Regulations", the "Canada Labour Code, Part II" and the "Occupational Health and Safety Regulations". Quality of the workplace must conform to the Public Health Act (Nunavut), General Sanitation Regulations and Camp Sanitation Regulations. All latest revisions of the federal, provincial and territorial regulations must be respected.

The procedures and requirements in this document regarding health and security are based on a review of available information and on the evaluation of potential hazards on site. This document specifies the procedures and the level of personal protection equipment (PPE) to be used, to minimize the potential for accidents and to minimize the exposure of personnel during the activities on site.

All health and security procedures in this plan are based on the best available and current information. Unknown conditions may exist, and conditions can change. This health and safety plan cannot take into account all unknown factors and predict all contingencies. The plan will be updated after the first working season and adjusted according to any new collected information from the site.

All personnel on site, including *Outcomes Consultants Inc.*, *PSPC*, *Transport Canada* representatives and the Kudlik Construction (KCL) employees are to comply with the content of this document. Each person working on site must read and understand the health and safety policy.

## 1.2 PROJECT DESCRIPTION

The landfills remediation at Resolute Bay will be achieved during the summers 2018-19 and will include the following major activities:

- Mobilization and demobilization of equipment;
- The production, transportation and placement of granular material;
- Processing and containerization of hazardous waste;
- Processing and on-site disposal of non-hazardous waste;
- Existing landfill closure;
- Collection, containerization and off-site disposal of all hazardous material;
- Excavation and containerization of contaminated soil

## **2. POLICIES AND WORKPLACE RIGHTS**

### **2.1 SAFETY STATEMENT**

In performance of its activities, Kudlik Construction Ltd. (KCL) is fundamentally concerned with:

- The safety and health of our employees, subcontractors, customers and the public.
- The protection of the environment.
- The protection of property.

Moreover, KCL is committed to:

- Abide by Safety, Health and Environment Acts and Regulations.
- Integrate Safety, Health and Environment matters in every organizational level and every field of activities of the Company.
- Maintain a safe and sound workplace and strive to eliminate preventable hazards that could result in injuries, illnesses, material damages, loss of production or environmental disturbance.
- Ascertain that all levels of management are accountable for the respect of this Safety, Health and Environment Policy
- Ascertain that all employees perform their duties in compliance with the company's Safety, Health and Environment Policy and rules. Every employee must work safely and care for the safety and health of co-workers.
- Verify that this Policy is complied with throughout the Company.

KCL's philosophy is to create an atmosphere that results in NO RISK to our workers, the public, the environment and our client. To fulfill this goal, KCL's senior management expects every employee to work to the highest degree of excellence in performing each job task safely.

To reduce the risk of incidents/accidents, all employees must work together in planning, analysing and identifying hazards before a job starts. Every employee must keep safety in mind, every day and all year long. By doing this, we will achieve our goal of no lost time injuries for any particular year. KCL feels confident that with the management and labour working together, we can succeed.

It is imperative that senior management, supervisor and every worker demonstrates a proactive approach to health and safety.

## **2.2 HARASSMENT POLICY**

KCL's employees are entitled to a harassment free environment at all activities, events and meetings.

There are two fundamental principles to the labour movement: human rights and solidarity. Harassment strikes at the heart of both.

KCL will not tolerate nor condone behaviour that is likely to undermine the dignity or self-esteem of an individual, or which creates an intimidating, hostile or offensive environment. We must speak out against harassment and stand together to protect human rights.

Harassment is not a joke. It is an expression of perceived power by the harasser over another person, usually for reasons, over which the victim has little or no control. Prohibited grounds under Human Rights Codes across Canada can include sex, race, age, marital status, sexual orientation, disability, political or religious beliefs, and place of national origin.

Harassment can be defined as any action (verbal, psychological or physical) on a single or repeated basis which humiliates, insults or degrades and is known or ought reasonably to be known to be unwelcome by the victim of the harassment.

Harassment can include but is not limited to: unwanted comments, slurs, racist or sexist jokes, pictures or posters, bullying or intimidation, graffiti, physical contact of any kind, remarks about a person's appearance or personal life, unwelcome sexual advances or demands, suggestive looks or gestures.

KCL takes harassment complaints seriously. Complaints of harassment at KCL activities will be investigated by the site superintendent and reported to the project manager for any necessary follow-up. A substantiated complaint will result in action by KCL which could include the removal of the harasser from the site.



## 2.3 DISCIPLINARY POLICY

KCL has a zero tolerance policy in regard to procedure violations or the performance of unsafe actions. The acceptance policy, presented in the Appendix 1, must be signed by every KCL's employees and subcontractor's employees.

The following disciplinary measures will be applied in case of violations:

### 1ST SAFETY VIOLATION:

- Verbal reprimand with retraining as required.
- Documentation in the employee's file.

### 2ND SAFETY VIOLATION:

- Written reprimand
- Retraining as required
- Documentation in the employee's file

### 3rd SAFETY VIOLATION:

- Termination (the employee will be sent off-site)
- Documentation in the employee's file

All pertinent facts will be carefully reviewed, and the employee will be given a full opportunity to explain his or her conduct before any decision is reached. The project manager will give a second opinion concerning the unacceptable behaviour before termination occurs.

At any point, an employee displaying disregard for safety, or incorrigibility after violations, may be terminated at the discretion of management.

Employees working with the offender may be subject to the same reprimands as the offender, as determined by the superintendent. The voluntary protection intent requires them to report unsafe behaviour and all employees have STOP WORK authority.

## **2.4 WORKPLACE RIGHTS**

Workers can make certain safety in the workplace is a priority by using workers' rights. The workers' rights are briefly explained hereunder.

### **2.4.1 Right to know**

By knowing about workplace hazards, workers can make sure employers make work safer, provide protection to workers, and give training so that workers can work with the smallest possibility of injury or illness.

### **2.4.2 Right to participate**

Workers have the right to participate in decisions affecting workplace health and safety. Federal, provincial, and territorial laws state that workers can get elected as paid worker representatives on workplace health and safety committees. Workers participating in health and safety decision making work with management on controlling or eliminating dangers in the workplace.

Workers and management on health and safety committees jointly find workplace hazards and recommend actions to make the workplace safer. The work of worker representatives is to act on behalf of workers' well being, and the work of committees is to give the employer advice on improving worker health and safety.

### **2.4.3 Right to refuse unsafe work**

The right to refuse lets a worker step away from work she or he believes is unsafe. The right allows the worker to have the refused work investigated, and repaired if it's dangerous. During the investigation and repair, the right provides that the worker receives pay. And with the right to refuse, a worker is protected from an employer's possible reprisal, since it's illegal for an employer to fire or discipline a worker who refuses work she or he believes is unsafe.

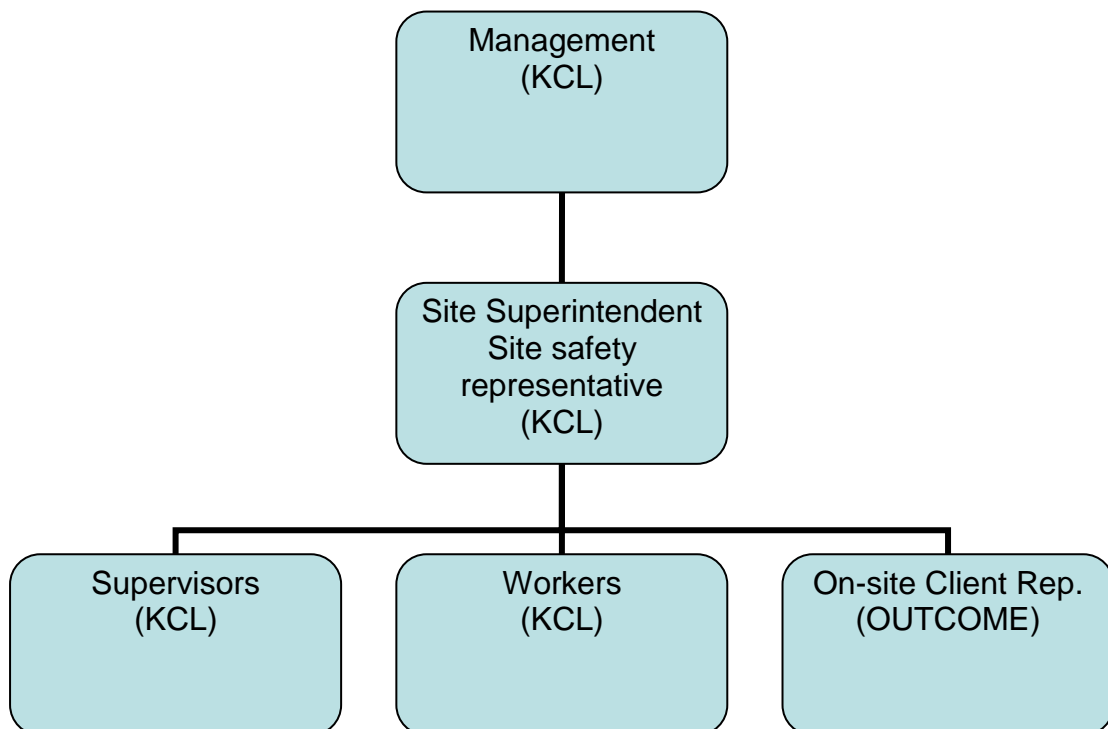
### 3. SAFETY RESPONSIBILITIES AND COMMUNICATIONS

The responsibility of health and safety for all workers begins with the attitude of each individual towards himself and fellow workers. Each employee must use all the precautions and judgement necessary to protect his health and safety and the health and safety of others. All employees have the responsibility to report any potentially hazardous situation to other workers involved, and to the site superintendent.

In the event that an employee finds himself in a potentially dangerous situation, he has the responsibility to stop immediately his activities. Work can resume only once the situation has been corrected and when the superintendent has given his approval. Under no circumstances will dangerous working conditions be tolerated.

#### 3.1 LINE OF COMMUNICATION

Even if the safety is the responsibility of everyone, the following communication chart must be followed on site to report any health and safety issue:



## **3.2 SAFETY RESPONSIBILITIES**

The main safety responsibilities of the following individuals are:

- KCL management is responsible to provide all material, resources and site supports to ascertain that operations are conducted in compliance with all acts and regulations in force;
- KCL superintendent is responsible for the implementation and the application of the Health and Safety Plan on site. He is also the site coordinator for any emergency situation;
- KCL site safety representative is responsible for helping the superintendent for the application of the health and safety plan. He is in charge of achieving all site safety inspections, filling all safety reports, keeping all records, organizing the health and safety committee and strongly consider their recommendations;
- All KCL employees and subcontractors must follow and respect the Health and Safety Plan. They must also report any health and safety issue to the health and safety representative or directly to the site superintendent;
- The client and their representatives, as everybody else on site, must follow the health and safety plan, unless something different is dictated by their own safety policy.

## **3.3 COMMUNICATION DEVICES**

### **3.3.1 Satellite phones and internet**

Certain mobile phone can be used on-site, a card must be purchased from ATCO. Internet and phone are available at the site office

### **3.3.2 FM radio**

Most of the vehicles are equipped with a mobile FM radio system. If your vehicle is not equipped with such a device, you shall carry a portable FM radio. All FM radios must be used on the channel 2. The communication base is located at the site office.

### 3.4 EMERGENCY PHONE NUMBERS

The following emergency phone numbers will be posted at the Hotel's dinning room and at the site office. The site superintendent is the on-site coordinator for any emergency situation. The ***Emergency Response Plan (ERP)***, presented in the section 9, must be consulted for further information regarding the management of emergency situations. The emergency list of phone numbers shown on the next page will be updated before starting each construction season.

## EMERGENCY PHONE NUMBERS

<b>Kudlik Construction Ltd</b>	<b>Business hours</b>	<b>After hours</b>
<b>Resolute Bay Site Office</b>	?	
<b>Hotel South Camp Inn</b>	(867) 252-3737	
<b>Inns North</b>	(867) 988-1981	
Iqaluit Office	(867) 979-1166	
François Bourassa, project manager	(866) 781 0704	(418) 930-0850
Dominique Marceau, backup project manager	(866) 781 0704	(418) 580-9506
Natacha Giroux, corporate H&S officer	(866) 781 0704	(418) 572-0880
<b>PSPC</b>		
Natalie Robinson	(403) 809 2751	(403) 809 2751
<b>Transport Canada (Client)</b>		
Holly Poklitar, Project Manager	(204) 880 5128	(204) 880 5128
<b>Medical</b>		
Resolute Bay Health Centre	(867) 252-3844	
<b>RCMP</b>		
Resolute Bay	(867) 252-1111	
<b>Airport manager</b>		
Resolute Bay	?	
<b>Fire Hall</b>		
Resolute Bay	(867) 924-629	
<b>Air transportation</b>		
Summit Air	(855) 355 5527	(855) 355 5527
Kudlik Aviation Inc.	(866) 781-0704	(418) 928-9690
Adlair Aviation Ltd.	(867) 873-5161	
Kenn Boreck Air Ltd. (resolute dispatch)	(867-252-3845	
<b>Local Resources</b>		
ATCO (Philip Chubbs)	(867) 252 3737	
Aziz Kheraj	(867) 252 3838	
<b>Environment</b>		
Nunavut Spill Report Line	(867) 920-8130	

## **4. SAFE WORK PRACTICE AND SITE RULES**

To ensure a safe work environment, safe work practices and site rules must be applied at all times. Some important site rules are listed below. For safety rules regarding specific activities, further sections must be consulted for additional details.

### **4.1 DRESSING, HYGIENE AND BEHAVIOR**

- Everybody on-site must wear the appropriate personal protective equipment (PPE).
- Loose clothing and long free hair, are forbidden around heavy machinery.
- Contact lenses are forbidden on working site.
- All personnel must have the appropriate personal hygiene to avoid the ingestion of contaminants or the dissemination of contamination.
- Smoking, eating and drinking is strictly forbidden, inside or close to a contaminated area.
- No one is to report in possession of, or under the influence of alcohol or drugs.
- Respect scheduled work hours.
- You must work as a team that is including everybody on-site.
- Intimidation, harassment, racism and any inappropriate behaviour will not be tolerated.

### **4.2 WILDLIFE**

One site, the wildlife monitoring will be done by at least one wildlife monitor. He will patrol the entire working site with ATVs. When needed, additional wildlife monitors will be added to make sure that each working group is covered. Each wildlife monitor will be equipped with a portable radio linked to the main radio communication system. Each wildlife monitors will have a valid firearm certificate and will be trained for wildlife monitoring and usage of deterrent. The wildlife monitors must bring their own firearm and ammunition.

When a potential threat from wildlife is observed, everybody will be advised via radio and the required procedure will be initiated. In the case of a bear presence, it will be chased away and its displacement will be followed carefully to make sure it doesn't come close to the site again. No animals will be shot unless it becomes a threat for our own safety. Any wildlife encounters and sightings will be reported in the weekly report.

### 4.3 WORKS WITHIN AND AROUND CONTAMINATED SITES

All contaminated areas are indicated on the contractual drawings. A general site map and copies of project drawings will be posted at the dining room. Before initiating any works on site, you must verify with the hazardous waste specialist that no contaminated soil is present in the working area. Signs will be posted around the areas where hazardous material can be found.

- All work in contaminated areas or involving hazardous or potentially hazardous material must be supervised by the hazardous material specialist.
- All work in the contaminated areas shall be performed by teams composed of a minimum of two persons.
- When possible, all personnel will work upwind from the excavating zones.
- Use the access road to move into and out of an excavation zone/area.
- All heavy machinery used in the contaminated zone, will remain in this zone until completion of work. Before leaving this zone, the equipment must be cleaned adequately.
- Keep your work area clean at all times placing any trash in the appropriate receptacles.
- Leave site with equipment in a secure and safe state, tidy, clean and ready to continue operations.

### 4.4 FLAMMABLE LIQUIDS

Flammable and combustible liquids vaporize and form flammable mixtures with air when in open containers, when leaks occur, or when heated. The flammable liquids that will be used on site will be diesel fuel and gasoline for small tools. These flammable liquids can be found also in drums through buried or surface debris.

#### 4.4.1.1 Precautions

The main objective in working safely with flammable liquids is to avoid accumulation of vapours and to control sources of ignition.

Besides the most obvious ignition sources, such as open flames from Bunsen burners, matches and cigarette smoking, less obvious sources, such as electrical equipment, static electricity and gas-fired heating devices should be considered. The following precautions must be taken when you are manipulating flammable liquids:



- Control all ignition sources in areas where flammable liquids are used. Smoking, open flames and spark producing equipment should not be used;
- All flammable liquids must be transported and stored in approved containers bearing "FM" and ULC labels. Containers must not be dented and/or damaged, caps and/or fittings present and properly secured;
- Flammable liquids must be transported in an upright position, braced or otherwise secured to prevent overturning;
- Gasoline engines should be shut off and allowed to cool, before refuelling;
- Never use gasoline as a cleaner.

## 4.5 CORROSIVE LIQUIDS

Corrosive liquids (e.g. mineral acids, alkali solutions and some oxidizers) represent a very significant hazard because skin or eye contact can readily occur from splashes and their effect on human tissue generally takes place very rapidly. Since all vehicle batteries contain sulphuric acid, precautions must be taken when a battery is charged or a jump start is performing.

### 4.5.1.1 Precautions while charging a battery

The room or compartment in which the battery is being charged should be well ventilated. Follow precautions to prevent battery explosion. Explosive mixtures of hydrogen gas are being generated during battery charging. This gas can be exploded by a torch, match flame, lighted cigarette, sparks from loose connections or metal tools making contact between the terminals or the ungrounded terminal and adjacent metal parts which are grounded. The following precautions must be taken when charging a battery:

- Always shield eyes when working around the battery;
- It is recommended that filler caps, where used, be left on the battery during charging. Additionally, a wet cloth should be placed over the battery and vent;
- DO NOT ATTEMPT TO CHARGE A FROZEN BATTERY;
- Always turn the charger to the "OFF" position before connecting the leads to the battery;
- Never break a "live" circuit of the battery terminals or touch the charger leads when the charger is "ON". This could create a spark which could ignite the explosive gases in the battery. Always turn the charger "OFF" before removing a charger lead from the battery.

## 4.6 COMPRESSED GASES

Acetylene and oxygen bottles are the more common compress gas that will be used on site. However, the following compress gases maybe also found on site:

- Propane
- Nitrogen

These compressed gas bottles can also be found through buried or surface debris. If a cylinder is not identified, or if you are not sure of the identification, please advise immediately the hazardous material specialist before taking any further action.

### 4.6.1.1 Precautions

Compressed gases can be toxic, flammable, oxidizing, corrosive, inert or a combination of hazards. In addition to the chemical hazards, compressed gases may be under a great deal of pressure. The amount of energy in a compressed gas cylinder makes it a potential rocket. Appropriate care in the handling and storage of compressed gas cylinders is essential.

- Avoid dropping, dragging or sliding cylinders. Use a suitable hand truck or cart equipped with a chain or belt for securing the cylinder to the cart, even for short distances;
- Do not permit cylinders to strike each other violently. Cylinders should not be used as rollers for moving material or other equipment;
- Cylinder caps should be left on each cylinder until it has been secured against a wall or bench or placed in a cylinder stand, and is ready for installation of the regulator. Cylinder caps protect the valve on top of the cylinder from damage if knocked;
- Never tamper with pressure relief devices in valves or cylinders;
- Use only wrenches or tools provided by the cylinder supplier to remove a cylinder cap or to open a valve. Never use a screwdriver or pliers;
- Keep the cylinder valve closed except when in use;
- Position cylinders so that the cylinder valve is accessible at all times;
- All cylinders must be secured to a wall, bench or fixed support using a chain or strap placed 2/3 of the way up. Cylinder stands are an alternative to straps.
- Do not store full and empty cylinders together;
- Oxidizers and flammable gases should be stored in areas separated by at least 20 feet or by a non-combustible wall;

- Cylinders should not be stored near radiators or other heat sources. If storage is outdoor, protect cylinders from weather extremes and damp ground to prevent corrosion;
- No part of a cylinder should be subjected to a temperature higher than 52°C. A flame should never be permitted to come in contact with any part of a compressed gas cylinder;
- Do not place cylinders where they may become part of an electric circuit;
- Ensure that the cylinder is properly and prominently labelled as to its contents;
- NEVER place acetylene cylinders on their side.

#### **4.7 DUST, FUMES, GASES AND VAPOURS**

All workers are provided with suitable respirators appropriate to the hazard and are trained to use and maintain the respirators properly during training sessions.

Should a worker perceive an odour through the cartridges or experience difficulty breathing through the respirator, he should without delay report back to the change room and obtain a new respirator or cartridges.

#### **4.8 POWER TOOLS**

Power tools must be used only by workers who have been instructed to operate the tools properly and safely. It is not permitted to alter or modify any power tools. Hearing protection should be worn when using certain tools.

#### **4.9 MATERIAL HANDLING**

Whenever practical, heavy lifts shall be executed with mechanical lifting devices. Workers should know their physical limitations and the approximate weight of materials they are trying to lift.

Workers are encouraged to get help, when a lifting task may be more than they can safely handle.

When manual handling is required, dollies, trucks and similar devices should be used.

## **4.10 ELECTRIFIED APPARATUS**

All apparatus capable of being electrically energized or dynamically activated must be de-energized by locking it out, physically disconnecting or otherwise rendering the apparatus inoperable.

Switches, power sources, controls, interlocks and other such devices must be appropriately tagged and personally locked off by every employee involved in the operation.

Where several workers or trades are working on the circuit, provisions for additional locks must be made through the use of a multiple lockout device. This arrangement can accommodate any number of locks by placing another multiple lockout device in the last hole of the previous device.

Every worker must attach to this lock a durable identifying tag.

The de-energized electrical system must be discharged, by short circuit and phase to ground. A temporary ground cable must be attached to the system and remain in place, until work is completed.

A record must be kept of the devices opened, locked-off or otherwise rendered inoperable so that all these devices can be reactivated once work is completed.

Always place sign(s) on the system indicating that it is not to be energized or operated and those guards, locks, temporary ground cables, chains, tags and other safeguards are not to be tampered and/or removed until work is completed.

## **4.11 EXCESSIVE NOISE**

With activities involving excessive noise, hearing protections should be used. The maximum allowable noise exposure is 85 decibels for eight hours, and for a longer period, the limit becomes 80 decibels.

Hearing protection is available on site in the following general types:

- Disposable earplugs made of pliable material, one size fits all, but can be used only once.
- CSA approved earmuffs which can be worn with or without safety hat, when fitted properly and worn, generally provide more protection than earplugs.

## 4.12 CUTTING OR WELDING

- Fire extinguishers must be available and close at hand wherever oxyacetylene cutting is being done.
- Workers involved in welding should not carry butane lighters.
- Oxygen or acetylene torches must not be used to blow dust from work surfaces, clothing or skin.
- Use only a spark lighter to ignite torches. Never use matches or cigarette lighter;
- Inspect lines for damage prior to use.
- Wear clothing made from heavyweight, tightly woven, 100% wool or cotton to protect from UV radiation, hot metal, sparks and open flames. Flame retardant treatments become less effective with repeated laundering.
- Keep clothing clean and free of oils, greases and combustible contaminants.
- Wear long-sleeved shirts with buttoned cuffs and a collar to protect the neck. Dark colours prevent light reflection.
- Tape shirt pockets closed to avoid collecting sparks or hot metal or keep them covered with flaps.
- Pant legs must not have cuffs and must cover the tops of the boots. Cuffs can collect sparks.
- Repair all frayed edges, tears or holes in clothing.
- Wear high top boots fully laced to prevent sparks from entering into the boots.
- Use fire-resistant boot protectors or spats strapped around the pant legs and boot tops, to prevent sparks from bouncing in the top of the boots.
- Remove all ignition sources such as matches and butane lighters from pockets. Hot welding sparks may light the matches or ignite leaking lighter fuel.
- Wear gauntlet-type cuff leather gloves or protective sleeves of similar material, to protect wrists and forearms. Leather is a good electrical insulator if kept dry.
- Direct any spark spray away from your clothing.
- Wear leather aprons to protect your chest and lap from sparks when standing or sitting.
- Wear layers of clothing. To prevent sweating, avoid overdressing in cold weather. Sweaty clothes cause rapid heat loss. Leather welding jackets are not very breathable and can make you sweat if you are overdressed.
- Wear a fire-resistant skull cap or balaclava hood under your helmet to protect your head from burns and UV radiation.
- Wear a welder's face shield to protect your face from UV radiation and flying particles.

---

#### 4.13 VEHICLES AND EQUIPMENT USAGE

- The driver must have a valid driver's licence with the appropriate class for the type of vehicle he is operating.
- Anyone using a company vehicle must respect all applicable rules and regulations.
- Vehicular speed limit on site is 40 km/hr
- Drive slow on the hamlet road, watch for kids
- Do not circulate on the airport restricted areas and on the site restricted areas;
- Do not circulate on undisturbed areas unless it is really necessary.
- Getting in or stepping out of a vehicle in motion, is prohibited.
- Riding in box of pickups is forbidden.
- Never use a loader bucket to go into an excavation or to move around the site.
- Before utilizing a company vehicle, the driver must perform the following checks: brakes, lights (headlights, signal, back up, brakes), horn, back-up alarm (if equipped), tires, mirrors, fuel and other fluids, fire extinguisher. Any defect or problem must be reported to the superintendent and the master mechanic.
- Permission must be obtained to disconnect, alter and/or move existing equipment. Review the work with your supervisor beforehand.
- Should any "spills" occur, report immediately to the superintendent.
- Never, but never, stand under overhead loads.

## 5. CAMP RULES (HOTEL)

Any concerns or issues regarding the camp rules must be addressed to the site superintendent who will communicate with the hotel manager. For any repairs or maintenance, please contact directly the hotel manager. The camp rules will be applicable jointly with the hotel rules and in the cases where they overlap, the most restrictive will have to be respected.

### 5.1 GENERAL REGULATIONS

Behaviour: Mutual respect amongst camp residents must be adhered to, at all times. Any person showing a lack of respect, towards a fellow resident will be advised immediately by the site superintendent. Inappropriate behaviour will not be tolerated.

Male, Female Washroom/Shower Time: Privacy during male/female use of camp washrooms and showers must be respected at all times.

Smoking: Smoking is forbidden in all buildings.

Alcohol: All alcohol and drugs are forbidden at the camp.

Use of Vehicles Around the hotel: Vehicle parking should take place in an orderly fashion, as to minimize the amount of space required.

Personal effects: Kudlik Construction Ltd. is not responsible for lost, stolen or damaged personal effects.

Laundry: Washers and dryers are at your disposal for your clothes. However, please use them reasonably; they are not made for clothes covered with mud. An identified washer is available for washing coveralls.

### 5.2 ROOMS

When you arrive, the hotel manager will assign you a room. The door key will be given to you and you shall return it before you leave. If you wish to have your room cleaned up, you must leave the door unlocked. On your arrival, the bed will have clean sheets and blankets. If you want new sheets and pillows, just put the dirty sheets in the laundry basket and get new ones.

### 5.3 SPECIAL DIET, HEALTH PROBLEM AND MEDICAL SUPPORT

For your own safety, allergies, food intolerance or special diet and any medical problem must be indicated on your hiring form and reported to the hotel manager. If you feel sick or you need medical assistance, please contact the site superintendent and the hotel manager.

### 5.4 COMMUNICATIONS

Cell phones service is available in Resolute. Hard line phone is available in each room. Kudlik do not pay for long distance calls.

Internet is accessible for everyone living at the hotel through a wireless network. Please use your common sense while using internet, downloading or sending heavy files is penalizing everyone.

### 5.5 MEAL SCHEDULE

It is really important to respect the meal schedule. If you cannot make it on time, please advise the cook.

**Meal service schedule:**

Breakfast:	6:00-6:30
Lunch:	12:00-12:30
Dinner:	19:00-19:30

### 5.6 PASTIMES

The use of company's vehicles for pastime activities is not permitted. For any past time activities outside of the hamlet boundary, the following safety rules must be taken:

- Advise the safety representative or a camp resident of your destination and the length of your absence;
- Advise the same person when you are back at the camp;
- Never leave alone;
- Always transport on you the proper communication device (portable radio or cell phone) and wildlife deterrent



**Hunting on site is strictly prohibited.** Fishing on and off site is permitted with proper licence.

A search party will be organized, in the event of a prolonged absence.

## **5.7 ENVIRONMENT**

Practice proper and responsible waste and resource management, whenever possible, this includes proper garbage disposal and water management. Excessive wasting and open fires are prohibited.

## **5.8 SAFETY**

Everyone at the camp site must adhere to all safety and regulatory signage as well as the health and safety policies.

You must be familiar with all emergency procedures, exits, signals and alarms. Keep accesses to fire equipment clear at all times and immediately report any damaged fire or safety apparatus to your supervisor.

## **6. HAZARD IDENTIFICATION FOR CONSTRUCTION ACTIVITIES**

PSPC has mandated KCL to perform the remediation of 3 landfills in Resolute Bay which includes the following main tasks:

- The production, transportation and placement of granular material;
- Processing and containerization of hazardous waste;
- Processing and on-site disposal of non-hazardous waste;
- Existing landfill closure;
- Collection, containerization and off-site disposal of all hazardous material;
- Excavation and containerization of contaminated soil

For all remediation activities to be performed, a Job Hazard Assessment (JHA) sheet will be filled on site by the site safety representative prior to the beginning of the activity. The following potential site hazards were identified:

- On-site and off-site traffic management;
- Extreme temperature/weather works;
- Works near and around the slopes / inclines and unstable ground;
- Works with and near heavy machinery;
- Works with hazardous material;
- Works near and around operational airport;
- Works near sewage disposal area;

A JHA was filled for each of the site hazards above-identified and are presented the Appendix 2. The JHA will be reviewed according to site conditions observed at the beginning of the works.

## **7. PERSONAL PROTECTIVE EQUIPMENT (PPE)**

All employees must wear the appropriate personal protective equipment (PPE) while on site. The goal is to protect and isolate individuals from chemical and physical dangers present on site. The selection and careful use of PPE must result in complete protection of the respiratory system, skin, eyes, face, hands, feet, head, body and hearing.

### **7.1 SITE REQUIREMENTS**

For each activity, the proper level of protection was determined. However, when changes in the working conditions occur, a planned level of protection may not be sufficient. In such a case, the affected work zone will be evacuated until the conditions and protection requirements are re-evaluated by the superintendent with the help of the hazardous material specialist and the site safety representative.

#### **7.1.1 General activities**

For anybody working or accessing the construction site, the following safety equipment must be worn for regular activities where hazardous material or contaminated soils are not involved:

- Safety boots
- Safety hat
- Safety glasses
- Working gloves
- Reflecting vest

Safety hats, glasses, gloves and reflecting vest will be provided to everybody. However, all workers must bring their own safety boots on site.

#### **7.1.2 Specific activities**

The following specific activities are requiring additional personnel protective equipment:

- Asbestos removal and containerization;
- PCB's material containerization
- Surface debris -Barrel processing.

Level C (EPA) of personal protective equipment was planned for these project activities. It includes the following equipment:

- Air purifying respirator with organic vapour and HEPA combination filters.
- Chemical resistant coveralls.
- Chemical resistant inner and outer gloves.
- Chemical resistant construction footwear.
- Hard hat.
- Face shield or chemical splash goggles.
- Disposable boot covers.

## **7.2 DRESSING AND UNDRESSING PROTOCOL**

The proper way to put on protective clothing is as follows:

1. Surgical gloves.
2. Cotton overalls.
3. Tyvek or poly laminated coveralls.
4. Construction footwear.
5. Boot covers (or rubber boots).
6. Tyvek bonnet (hood).
7. Respirator.
8. Hard hat.
9. Outer gloves.

Before leaving the dressing area, verify satisfactory fit of the mask-to-face-seal. Facial hair (beard) is not permitted. To check mask tightness, place hands over cartridge ends and breathe in: in doing so, the mask should stick to face and air should not pass. Should this not be the case and/or if you are doubtful, change the mask.

The proper way to disrobe is as follows:

1. Remove outer gloves.
2. Remove hard hat.
3. Remove glasses or eye/facial protection.
4. Remove respiratory mask.
5. Remove bonnet (hood).
6. Remove boot covers.
7. Remove construction footwear.
8. Remove coverall (Tyvek or poly laminated).
9. Remove surgical gloves.
10. Remove working clothes (cotton coveralls).

Disposable safety equipment such as gloves, coveralls, boot covers, etc. must be disposed in the assigned container.

### 7.3 PERSONAL HYGIENE

Decontamination is a critical element in terms of health and safety on site; more specifically, the removal of contaminants on PPE and machinery. Decontamination protects workers from hazardous substances which may contaminate respiratory devices, tools, vehicles and other equipment used on site, and eventually transit through protection clothing. Decontamination also protects all personnel on site, by minimizing transfers of harmful materials to clean zones. The following basic hygiene measures must be adopted by everybody using PPE:

- Every employee must wash his/her hands and face carefully with soap and water before eating, drinking, smoking, or using the bathroom. Meals are to be taken in designated area only and no protection equipment is allowed in those areas.
- At the end of every shift, all personnel must wash or take a shower. Every skin area that may have been in contact with contaminants must be washed with soap and water. All working clothes (worn under protective clothing), should be cleaned frequently.
- The decontamination process includes the removal of all contaminated and stained clothing during work and at the end of the work day. While removing contaminated clothes, special care should be given to prevent contact between contaminants and skin. Contaminated clothing should then be placed in designated drum(s).
- Equipment used, must be cleaned and disinfected wherever there is a potential skin/equipment contact. Wash solutions and wipe material will be kept in the decontamination area for this purpose.
- Observe site specific protocols on washing and removing boots and other equipment before entering the dressing room and/or clean area;

### 7.4 TRAINING

At the beginning of each working season, all employees will be trained on PPE usage. The general training will include the following topics:

- The minimum level of PPE required on site;
- Where are located the contaminated areas;
- Protocols for entry and exit into a contaminated area;
- When extra PPE is necessary;

- Which type of extra PPE will be necessary to access contaminated areas.

All employees who will be involved in activities where PPE level C is required will receive additional training by the hazardous material specialist. During that training, the following subject will be discussed:

- How to properly put on, take off, adjust and wear the PPE;
- Where and how to dispose of contaminated PPE;
- The limitations of the PPE;
- Respirator fit testing;
- PPE inspection and care.

Training records of all employees will be kept on site.

## **8. SAFETY MEETINGS, INSPECTIONS AND REPORTS**

To ensure proper understanding of the health and safety plan by everyone on site and to test its application, a series of meeting and inspections will be performed by the project manager, the site superintendent or the on-site health and safety representative.

### **8.1 WORKER ORIENTATION SEMINAR**

Everyone who will access the site must attempt the worker orientation seminar. During this meeting, presented at the beginning of every working season, the health and safety plan will be presented and explained. Attendants must sign the presence sheet.

### **8.2 JOB HAZARD ANALYSIS**

Prior to start any new activities, a job hazard analysis will be performed in order to identify potential hazards and determine the required level of PPE. Hazard assessment sheets will be kept in the health and safety file.

### **8.3 WEEKLY GENERAL SAFETY MEETINGS**

Once a week, the site superintendent will hold a general safety meeting at the cafeteria. The following safety subjects or concerns might be discussed:

- Describe all assigned tasks and their potential hazards;
- Personal protective equipment;
- Coordination of all activities;
- Identify all safety measures to prevent injuries;
- Plan for emergency situations;
- Describe any change in the health and safety plan;
- Obtain workers' opinions on site conditions, affecting security;
- Obtain workers' opinions on the health and safety plan effectiveness.

A summary of discussed subjects and a copy of the presence list will be part of the weekly progress report submitted to PWGSC.

## **8.4 TOOL BOX MEETINGS**

Tool box meetings will be held on a daily base by the team supervisors or by the site superintendent in order to reinforce the site safety regulations. Tool box meetings must be also done at the beginning of all new activities. Attendance records will be kept in the health and safety file.

## **8.5 INSPECTIONS**

To ensure the correct application of the health and safety plan, a weekly inspection of the site, installations, equipment, conditions and activities will be performed by the site safety representative and a PSPC representative. These inspections will follow the check list presented in the Appendix 2.

## **8.6 REPORTS**

After any accident or incident, the supervisor and worker directly involved in the area, shall assist the health and safety representative to complete the accident report. All personnel witnesses may be questioned, if needed. The accident report form is included in Appendix 2. All accident reports shall be forwarded to the project manager and to the PSPC site representative.

When somebody is getting injured on site and transported to the health center in Resolute Bay, a report must be filled by the employee and by the site safety representative and by the health center. The reports must be sent to the WSCC office within 24 hours.

The weekly progress report submitted to PSPC will include a health and safety section where all related activities will be presented.



## **9. CONTINGENCY AND EMERGENCY RESPONSE PLAN**

Emergencies must be considered as a potential threat. Sudden and unexpected events require both immediate response and adequate preparedness.

Any danger on site can result in an emergency: chemical products, lack of attention, or physical dangers can all act individually or be combined and create spills, toxic atmospheres, injuries or other types of dangerous situations.

If an unexpected and potentially hazardous situation occurs, as indicated by instruments, visible chemical compounds, unusual or excessive odours, etc., employees must temporarily cease operations, go toward a secure zone and contact their supervisor who will immediately inform the site superintendent and the site safety representative. Appropriate measures will be taken according to the nature of the incident.

### **9.1 MEDICAL EMERGENCY PROCEDURES**

In the event of anyone getting injured on site, the following procedures will be followed:

- A general call on radio requiring immediate assistance must be made at first. Mention the exact location and a brief description of the situation;
- The site superintendent will contact the local health center;
- Provide first aids;
- Transport the injured person to the local health center and if applicable, follow the nurse instructions.

If the patient needs evacuation for further medical assistance, the emergency evacuation procedure will be initiated by the local health center. From there, decisions will be taken by the health center personnel if the patient needs to be transferred to Yellowknife or any other hospitals.

## **9.2 FIRE**

### **9.2.1 Fire at the camp facilities (hotel)**

Consult the emergency plan at the hotel showing the emergency exit, extinguishers and the mustard point

### **9.2.2 Fire on site**

In case of fire, contact immediately the site superintendent on the radio and call for help. Each vehicle is equipped with a fire extinguisher. Other fire extinguishers are available on site and their locations are shown on the figures 1 and 2 in the Appendix 3.

## **9.3 WILDLIFE THREAT**

Refer to the section “Wildlife Management Plan”

## **9.4 SPILL**

Refer to the section “Spill Control Plan”

## **9.5 AIRPLANE MISSING**

In the situation where a plane is experiencing troubles or is missing, the following authority must be contacted:

**Civil Air Search and Rescue Association (CASARA) – Nunavut**  
Chris Lalande, Zone Commander (Iqaluit)  
(867) 975-1000

## **10. SPILL CONTINGENCY PLAN**

### **10.1 STORAGE**

With the exception of the site office generator's fuel tank, no fuel storage will be done on site. The 500 litres steel tank is installed in a marine container, built in with the generator.

### **10.2 EXISTING ON SITE FUEL CONTAINERS OR RESERVOIRS**

The various heavy equipment that will be used during the remediation works use diesel fuel. The equipment tanks capacity varies from 120 to 800 liters.

Some drums containing petroleum products were identified with the exiting landfills. Additional filled drums might be existing through debris and could be found through buried or partially buried debris. Any drums found with product will be transported to the material processing area where it will be re-containerized for off-site shipment and disposal.

Some abandoned vehicle to be processed might have remaining petroleum products and antifreeze in various reservoirs. Before being processed for on-site disposal, each vehicles will be inspected by our mechanic in order to confirm the presence of any remaining liquids. All remaining fluids will be drained and collected for off-site disposal.

A drip pan made of a piece of RPE liner will be used to protect the soil while the liquids are transferred into drums.

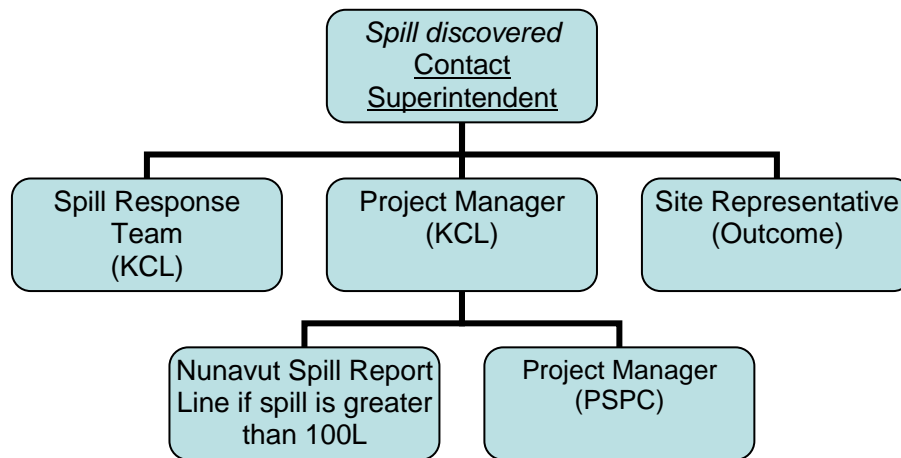
### **10.3 REFUELING**

Only authorized and trained people wearing the appropriated PPE are allowed to carry on the refueling operations. All equipment and vehicles running with diesel will be refilled with the fuel truck who does have a capacity of 11,500 litres. The fuel truck will be refilled at the Resolute Bay fuel storage facility. Low mobility equipment, as excavators, will be refilled at their location at the end of the working shift. Dump trucks will be refilled at the parking area, nearby the site office. A spill kit and a no smoking sign will be installed in the area indicated on the figure 1 and 2 at the Appendix 3.

## 10.4 PROCEDURES IN CASE OF SPILL

## 10.5 LINE OF COMMUNICATION

No matter the size of the spill, it must be reported as soon as possible to the site superintendent. The following line of communication must be applied during the mobilization and site works:



## 10.6 EMERGENCY PHONE NUMBERS

<b>Kudlik Construction Ltd</b>	<b>Business hours</b>	<b>After hours</b>
Resolute Bay site office	?	
François Bourassa, project manager	(866) 781 0704	(418) 930-0850
Dominique Marceau, backup project manager	(866) 781 0704	(418) 580-9506
Natacha Giroux, corporate H&S officer	(866) 781 0704	(418) 572-0880
<b>PSPC</b>		
Natalie Robinson	(403) 809 2751	(403) 809 2751
<b>Transport Canada (Client)</b>		
Holly Poklitar, Project Manager	(204) 880 5128	(204) 880 5128
<b>Airport manager</b>		
Resolute Bay	?	
<b>Environment</b>		
Nunavut Spill Report Line	(867) 920-8130	

## 10.7 GENERAL PROCEDURES

This general procedure is to be followed in the event of a spill. Steps are listed in the order of importance; however, depending on the circumstances, conditions, and potential injuries, this order may need to be altered to meet specific needs.

### 1. Identify the product spilled and call for help:

Petroleum products on site are arctic diesel, gasoline and lubricants. Advise as soon as possible the site superintendent and call for help when needed.

### 2. Assessment of dangers and hazards:

Immediate determinations must be made about the direction of the spill's progress, whether downhill, on the ice, towards the water, or already in the water. As well, careful attention will be paid to the full nature of the incident; is this solely a surface contaminant, or are fumes an additional factor; are there any injuries current or possible.

### 3. Stop the flow at source:

Has the flow been stopped or is it still leaking? Is there an emergency Shut-off valve? Have holes in the container been patched? Is the container empty? PRECAUTION: ONLY ATTEMPT TO STOP THE FLOW IF IT IS SAFE TO DO SO.

### 4. Take actions to contain the spill:

Prompt containment can reduce environmental exposure and risk. Containment measures may be land or water based. Land based measures include application of sorbents, construction of berms and diversion/collection trenches. Water based measures could include dams, dykes, and floating booms.

## 10.8 SPECIFIC PROCEDURES FOR DIFFERENT ENVIRONMENTS

The entire mobilization/demobilization will be done on snow or ice while the cleanup activities will be performed during summer. As explained in the following sections, procedures in case of spill vary depending in which environment it occurs.

### **10.8.1 Spill on land**

- Do not flush into ditches or drainage systems.
- Block entry into waterways and contain with earth, snow or other barrier.
- Remove small spills with sorbent pads.
- On tundra, collect as much contamination as possible while to the maximum extent practicable minimizing destruction of the root zone of the tundra grasses.

### **10.8.2 Spill on ice and snow**

- Block entry into waterways and contain with snow or other barrier.
- Remove minor spills with sorbent pads and/or snow.
- Use ice augers and pump to recover diesel under ice.
- Slots in ice can be cut over slow moving water to contain oil.
- Burn accumulated diesel from the surface using Tiger Torches if feasible and safe to do so.

### **10.8.3 Spill on Muskeg**

- Do not deploy personnel and equipment on marsh or vegetation.
- Remove pooled diesel with pumps and skimmers.
- Flush with low pressure water to herd diesel to collection point.
- Burn only in localized areas, e.g., trenches, piles or windrows.
- Do not burn if root systems can be damaged (low water table).
- Minimize damage caused by equipment and excavation.

### **10.8.4 Spill in water**

- Contain spill as close to release point as possible.
- Use spill containment boom to concentrate slicks for recovery.
- On small spills, use sorbent pads to pick up contained oil.
- On larger spills, use skimmer on contained slicks.
- Do not deploy personnel and equipment onto mudflats or into wetlands

### **10.8.5 Spill in rivers and streams**

- Prevent entry into water, if possible, by building berm or trench.
- Intercept moving slicks in quiet areas using (sorbent) booms.
- Do not use sorbent booms/pads in fast currents and turbulent water.

## **10.9 REPORTING**

For every spill, pictures must be taken during and after the cleanup progress. The GPS coordinates of the spill location must be recorded. All collected information and pictures

will be used for the spill report. Spills of 100 litres and less will be recorded on the Site Spill Log, reported in the weekly report and within the annual license reporting. Any spill greater than 100 litres must be reported to the Nunavut 24-hours spill report line (see the attached form in Appendix 2). The person reporting the spill shall give as much of the following information as possible. Please note that the operators at the Hotline are NOT spill management experts. They can only relay information to the appropriate authorities/protection agencies. Reportable information includes but is not limited to the following:

- Date and time of spill;
- Direction spill is moving (or if it has stopped);
- Name and phone number of persons close to the location of the spill;
- Type of contaminant spilled and quantity spilled;
- Cause of spill;
- Whether the spill is continuing or has stopped;
- Description of the existing containment;
- Actions taken to recover, clean-up and dispose of spilled contaminant;
- Name, address and phone number of person reporting the spill;
- Name of person in charge of management or control at time of spill;

## **10.10 TRAINING**

All employees working on the remediation project will have to attend the worker orientation seminar. Through this seminar, the spill contingency plan will be reviewed and explained to everyone. The employees will be trained in the safe operation of all machinery and tools, as well as in the handling of materials to help prevent and respond to hazardous material spills in a timely and effective manner. Training will also include initial spill response in the event of a spill.

## **11. WILDLIFE MANAGEMENT PLAN**

Wildlife monitoring will be done by two wildlife monitors. They will patrol the entire working site with ATVs. The wildlife monitors will be carrying a portable FM radio in order to be in constant communication with the rest of the crew. Each wildlife monitor will have a valid firearm certificate and will be trained on the safe use of ATV and wildlife deterrent. Two 12-gauge firearms and ammunition (regular and non-lethal) will be kept in a lock cabinet at the site office. The wildlife monitors will be taking the guns at the beginning of their working day and returning them at the end of their working shift. One bear deterrent kit will be available at the site office.

When a potential threat from wildlife is observed, everybody will be advised via radio and the required procedure will be initiated. In the event of a bear presence, it will be chased away and its displacement will be followed carefully to make sure it doesn't come close to the site again. No animal will be shot unless it becomes a threat to our own safety.



## **APENDIX 1**

### **ACCEPTANCE POLICY**

#### **Health and Safety Plan** *Resolute Bay Landfills Remediation*

##### **Attachments:**

- Acceptance policy

## **ACCEPTANCE POLICY**

I received a copy of the Specific Health and Safety Plan for the following project: *Resolute Bay Landfills Remediation*. I read this program, I agree with its content and I understand that my access to the site could be denied due to violation of any clauses concerning health and safety requirements as described in this document.

### EMPLOYEE

Signature: \_\_\_\_\_

Name: \_\_\_\_\_

Date: \_\_\_\_\_

### SUBCONTRACTOR / CLIENT REPRESENTATIVE

Company: \_\_\_\_\_

Signature: \_\_\_\_\_

Name: \_\_\_\_\_

Date: \_\_\_\_\_

## **APENDIX 2**

### **FORMS**

#### **Health and Safety Plan**

##### ***Resolute Bay Landfills Remediation***

##### **Attachments:**

- Hazard assessment sheet
- Incident report form
- Inspection report form
- NT-NU Spill Report Form

Kudlik Construction Ltd.						
<b>Hazard Assessment Form - Dew Line Clean-up: CAM-E</b>						
<b>Area:</b>				<b>Project start date:</b>		
<b>Task:</b>				<b>Project finish date:</b>		
<b>Task Activity Description</b>						
				<b>Project start date:</b>		
				<b>Project finish date:</b>		
<b>Hazards Identified During Assessment</b>			<b>Personal Protective Equipment Required</b>			
<b>Safety Hazards</b>		<b>Biological Hazard</b>	<b>Respirator:</b>	<b>Dermal Protection</b>	<b>Head / Eye Protection</b>	
			YES [ ] NO [ ] TYPE	YES [ ] NO [ ] TYPE	YES [ ] NO [ ] TYPE	
			Half-face respirator [ ]	Leather gloves [ ]	Hard hat [ ]	
			OV/HEPA filter (as [ ]	Long rubber gloves [ ]	Safety glasses [ ]	
			per air monitoring	Cotton coveralls [ ]	Face Shield [ ]	
			PAPR(Powered Air [ ]	Reflective vest [ ]	Chemical goggles [ ]	
			Purifying Respirator	Nitril gloves [ ]	Ear plugs and/or muffs [ ]	
<b>Physical Hazards</b>	<b>Ergonomic Hazards</b>	<b>Chemical Hazards</b>	Dust masks [ ]	Coveralls / Tyvek suits [ ]	<b>Foot Protection</b>	
				rain suit [ ]	YES [ ] NO [ ] TYPE	
					Leather safety boots [ ]	
					Rubber safety boots [ ]	
			<b>Controls Required</b>			
			Area defined	Air monitoring	Confined Space permit	
			YES [ ] NO [ ]	YES [ ] NO [ ]	YES [ ] NO [ ]	
			Fire extinguishers ABC	Decon measures	Tool Box & Formal Meeting	
			YES [ ] NO [ ]	YES [ ] NO [ ]	YES [ ] NO [ ]	
			Two-way communication	Soil Testing	Water Truck	
			YES [ ] NO [ ]	YES [ ] NO [ ]	YES [ ] NO [ ]	
<b>Hazards controlled as per:</b>			Eye wash station	Spotter	Truck Shower	
			YES [ ] NO [ ]	YES [ ] NO [ ]	YES [ ] NO [ ]	
			Polar Bear monitor	Hot Work Permit	Soil Testing	
			YES [ ] NO [ ]	YES [ ] NO [ ]	YES [ ] NO [ ]	
			Kudlik Construction Ltd			
			Name:	Signature:		

Kudlik Construction Ltd				
Hazard Assessment Form - Resolute Bay Landfills Remediation				
<b>Area:</b> Airport property			<b>Project start date:</b> June 1st 2018	
<b>Task:</b> Work near and around operational airport			<b>Project finish date:</b> September 5th, 2019	
<b>Task Activity Description</b>				
All task related to the project will be carried on nearby an active airport site. The East and the N-E borrow areas are in the runway alignment.			<b>Task start date:</b> August 1st 2018	
			<b>Task finish date:</b> September 5th, 2019	
<b>Hazards Identified During Assessment</b>		<b>Personal Protective Equipment Required</b>		
<b>Safety Hazards</b>	<b>Biological Hazard</b>	<b>Respirator:</b>	<b>Dermal Protection</b>	<b>Head / Eye Protection</b>
- Work exclusion zones - Interferences with airport operations	NA	YES [ ]      NO [X]    TYPE	YES [ ]      NO [ ]    TYPE	YES [X] NO [ ]    TYPE
		Half-face respirator    [ ]	Leather gloves            [ ]	Hard hat                [ ]
		OV/HEPA filter (as    [ ] per air monitoring	Long rubber gloves       [ ]	Safety glasses        [ ]
		PAPR(Powered Air    [ ]	Cotton coveralls           [ ]	Face Shield            [ ]
		Purifying Respirator	Reflective vest            [ ]	Chemical goggles       [ ]
		Nitrile gloves            [ ]	Ear plugs and/or       [ ]	
<b>Physical and Ergonomic Hazards</b>	<b>Chemical Hazards</b>	Dust masks            [ ]	Coveralls / Tyvek suits    [ ]	<b>Foot Protection</b>
NA	NA		Rain suit                [ ]	YES [X]      NO [ ]    TYPE
			Warm clothes            [ ]	Leather safe boot       [ ]
				Rubber safe boot:       [ ]
		<b>Controls Required</b>		
		Area defined YES [x]                  NO [ ]	Air monitoring YES [ ]                  NO [x ]	Confined Space permit YES [ ]                  NO [X ]
Fire extinguishers ABC YES [ ]                  NO [x ]	Decon measures YES [ ]                  NO [x ]	Tool Box & Formal Meeting YES [X]                  NO [ ]		
Two-way communication YES [X]                  NO [ ]	Soil Testing YES [ ]                  NO [x ]	Water Truck YES [ ]                  NO [X ]		
<b>Hazards controlled as per:</b>		Eye wash station YES [ ]                  NO [x ]	Spotter YES [ ]                  NO [x ]	
- Proper communication with airport authorities - Signage - Site orientation - Work procedures		Polar Bear monitor YES [X]                  NO [ ]	Hot Work Permit YES [ ]                  NO [X ]	
		Kudlik Construction Ltd		
		Name:		Signature:

Kudlik Construction Ltd				
Hazard Assessment Form - Resolute Bay Landfills Remediation				
<b>Area:</b> Airport property and hamlet			<b>Project start date:</b> June 1st 2018	
<b>Task:</b> Extreme Temperature / Weather Work			<b>Project finish date:</b> September 5th, 2019	
<b>Task Activity Description</b>				
All project tasks, especially applicable in fall when the temperature will become much colder			<b>Task start date:</b> August 1st 2018	
			<b>Task finish date:</b> September 5th, 2019	
<b>Hazards Identified During Assessment</b>		<b>Personal Protective Equipment Required</b>		
<b>Safety Hazards</b>	<b>Biological Hazard</b>	<b>Respirator:</b>	<b>Dermal Protection</b>	<b>Head / Eye Protection</b>
- Road & surface can be slippery - Low visibility	NA	YES [ ]      NO [ X ]    TYPE	YES [ X ]      NO [ ]    TYPE	YES [ X ] NO [ ]    TYPE
		Half-face respirator    [ ]	Leather gloves                    [ X ]	Hard hat                    [ X ]
		OV/HEPA filter (as    [ ] per air monitoring	Long rubber gloves            [ ]	Safety glasses            [ X ]
		PAPR(Powered Air    [ ]	Cotton coveralls                [ ]	Face Shield                [ ]
		Purifying Respirator	Reflective vest                    [ X ]	Chemical goggles           [ ]
<b>Physical and Ergonomic Hazards</b> - Strong wind - Cold temperature - Rapid temperature drop - Hypothermia - Strong UV exposure	NA	Dust masks                    [ ]	Nitrile gloves                    [ ]	Ear plugs and/or           [ ]
			Coveralls / Tyvek suits           [ ]	
			Rain suit                            [ X ]	<b>Foot Protection</b>
			Warm clothes                    [ X ]	YES [ X ]      NO [ ]    TYPE
				Leather safe boot           [ X ]
<b>Controls Required</b>				
<b>Hazards controlled as per:</b> - Daily tool box meetings - Carry warm cloths at all time		Area defined YES [ ]                    NO [ X ]	Air monitoring YES [ ]                    NO [ X ]	Confined Space permit YES [ ]                    NO [ X ]
		Fire extinguishers ABC YES [ ]                    NO [ ]	Decon measures YES [ ]                    NO [ X ]	Tool Box & Formal Meeting YES [ X ]                    NO [ ]
		Two-way communication YES [ X ]                    NO [ ]	Soil Testing YES [ ]                    NO [ X ]	Water Truck YES [ ]                    NO [ X ]
		Eye wash station YES [ ]                    NO [ X ]	Spotter YES [ ]                    NO [ ]	
		Polar Bear monitor YES [ ]                    NO [ X ]	Hot Work Permit YES [ ]                    NO [ X ]	
		Kudlik Construction Ltd		
		Name: _____ Signature: _____		

Kudlik Construction Ltd				
Hazard Assessment Form - Resolute Bay Landfills Remediation				
Area: Airport property			Project start date: June 1st 2018	
Task: Work with hazardous material			Project finish date: September 5th, 2019	
Task Activity Description				
- Removal and containerization of hazardous material - Transport and storage of hazardous material			Task start date: August 1st 2018	
			Task finish date: September 5th, 2019	
Hazards Identified During Assessment		Personal Protective Equipment Required		
Safety Hazards	Biological Hazard	Respirator:	Dermal Protection	Head / Eye Protection
- Known hazardous waste are described in the specifications - Unidentified hazardous waste can be found through debris	NA	YES [ ] NO [X] TYPE	YES [X] NO [ ] TYPE	YES [X] NO [ ] TYPE
		Half-face respirator [ x ]	Leather gloves [ X ]	Hard hat [X ]
		OV/HEPA filter (as [ ] per air monitoring	Long rubber gloves [ x ]	Safety glasses [ X ]
		PAPR(Powered Air [ ] Purifying Respirator	Cotton coveralls [ x ]	Face Shield [ x ]
			Reflective vest [ X ]	Chemical goggles [ x ]
Physical and Ergonomic Hazards	Chemical Hazards			Foot Protection
- Skin / eyes contact with hazardous material - Breathing toxic vapours	- Battery acid - PCB's - Lead amended paint - Asbestos - Petroleum products - Unknown hazardous Waste	Dust masks [ x ]	Coveralls / Tyvek suits [ x ]	
			Rain suit [ ]	YES [X] NO [ ] TYPE
			Warm clothes [ ]	Leather safe boot [X ]
				Rubber safe boot: [X ]
		Controls Required		
		Area defined	Air monitoring	Confined Space permit
		YES [x] NO [ ]	YES [x] NO [ ]	YES [ ] NO [X ]
		Fire extinguishers ABC	Decon measures	Tool Box & Formal Meeting
		YES [ x ] NO [ ]	YES [ x ] NO [ ]	YES [X ] NO [ ]
		Two-way communication	Soil Testing	Water Truck
		YES [X ] NO [ ]	YES [ x ] NO [ ]	YES [ ] NO [X ]
Hazards controlled as per:		Eye wash station	Spotter	
- Proper PPE		YES [x] NO [ ]	YES [ ] NO [x ]	
- Work done under the supervision of the hazardous waste tech		Polar Bear monitor	Hot Work Permit	
- Signage		YES [X] NO [ ]	YES [ ] NO [X ]	
- Work procedures				
Kudlik Construction Ltd				
		Name:	Signature:	

Kudlik Construction Ltd				
Hazard Assessment Form - Resolute Bay Landfills Remediation				
<b>Area:</b> Airport property: Entire site			<b>Project start date:</b> June 1st 2018	
<b>Task:</b> Work with and near heavy machinery			<b>Project finish date:</b> September 5th, 2019	
<b>Task Activity Description</b>				
- Debris removal and processing at AEC-1 and AEC-2 landfills - Regrading slopes at AEC-1 and AEC-2 - Granular material production			<b>Task start date:</b> August 1st 2018	
			<b>Task finish date:</b> September 5th, 2019	
<b>Hazards Identified During Assessment</b>		<b>Personal Protective Equipment Required</b>		
<b>Safety Hazards</b>	<b>Biological Hazard</b>	<b>Respirator:</b>	<b>Dermal Protection</b>	<b>Head / Eye Protection</b>
- Workers nearby moving machinery - Collision between machineries	NA	YES [ ]      NO [ X ]    TYPE	YES [ X ]      NO [ ]    TYPE	YES [ X ] NO [ ]    TYPE
		Half-face respirator    [ ]	Leather gloves                    [ X ]	Hard hat                    [ X ]
		OV/HEPA filter (as    [ ] per air monitoring	Long rubber gloves            [ ]	Safety glasses            [ X ]
		PAPR(Powered Air    [ ]	Cotton coveralls                [ ]	Face Shield                [ ]
		Purifying Respirator	Reflective vest                    [ X ]	Chemical goggles        [ ]
			Nitrile gloves                    [ ]	Ear plugs and/or    [ ]
<b>Physical and Ergonomic Hazards</b>	<b>Chemical Hazards</b>	Dust masks                    [ ]	Coveralls / Tyvek suits        [ ]	<b>Foot Protection</b>
	- Spill of diesel & oil		Rain suit                            [ ]	YES [ X ]      NO [ ]    TYPE
			Warm clothes                    [ ]	Leather safe boot        [ X ]
				Rubber safe boot:    [ X ]
		<b>Controls Required</b>		
		Area defined YES [ ]                    NO [ x ]	Air monitoring YES [ ]                    NO [ X ]	Confined Space permit YES [ ]                    NO [ X ]
Fire extinguishers ABC YES [ ]                    NO [ x ]	Decon measures YES [ ]                    NO [ x ]	Tool Box & Formal Meeting YES [ X ]                    NO [ ]		
Two-way communication	Soil Testing	Water Truck		
<b>Hazards controlled as per:</b>		YES [ X ]                    NO [ ]	YES [ ]                    NO [ X ]	YES [ ]                    NO [ X ]
- Eyes contact with the operator at all time - Tool box meetings - Speed limits - Work procedures		Eye wash station YES [ ]                    NO [ x ]	Spotter YES [ X ]                    NO [ ]	
		Polar Bear monitor	Hot Work Permit	
		YES [ X ]                    NO [ ]	YES [ ]                    NO [ X ]	
Kudlik Construction Ltd				
		Name:	Signature:	



Kudlik Construction Ltd				
Hazard Assessment Form - Resolute Bay Landfills Remediation				
<b>Area:</b>		Airport property and hamlet		<b>Project start date:</b> June 1st 2018
<b>Task:</b>		On-site and off-site traffic		<b>Project finish date:</b> September 5th, 2019
<b>Task Activity Description</b>				
- Daily travel from hotel and hamlet to site with pickup truck and other vehicles - Hauling gravel from borrow areas to AEC-1, 2 & 3 / Hauling debris from AEC-2 /AEC-3 to AEC-1 - Hauling equipment and containers from/to barge landing to site				<b>Task start date:</b> August 1st 2018
				<b>Task finish date:</b> September 5th, 2019
<b>Hazards Identified During Assessment</b>		<b>Personal Protective Equipment Required</b>		
<b>Safety Hazards</b>	<b>Biological Hazard</b>	<b>Respirator:</b>	<b>Dermal Protection</b>	<b>Head / Eye Protection</b>
- Sharing roads with smaller vehicles (ATV, ...) - Kids playing, people not use with vehicle traffic - Road conditions are slippery when temperature are below zero	NA	YES [ ]      NO [ X ]    TYPE	YES [ X ]      NO [ ]    TYPE	YES [ X ] NO [ ]    TYPE
		Half-face respirator    [ ]	Leather gloves                    [ X ]	Hard hat                    [ X ]
		OV/HEPA filter (as    [ ] per air monitoring	Long rubber gloves            [ ]	Safety glasses            [ X ]
		PAPR(Powered Air    [ ]	Cotton coveralls                [ ]	Face Shield                [ ]
		Purifying Respirator	Reflective vest                    [ X ]	Chemical goggles            [ ]
		Nitrile gloves                    [ ]	Ear plugs and/or            [ ]	
<b>Physical and Ergonomic Hazards</b>	<b>Chemical Hazards</b>	Dust masks                    [ ]	Coveralls / Tyvek suits            [ ]	<b>Foot Protection</b>
-The airport property includes some restricted areas - Watch for overhead electric wires	NA		rain suit                            [ ]	YES [ X ]      NO [ ]    TYPE
				Leather safe boot            [ X ]
				Rubber safe boot:            [ ]
		<b>Controls Required</b>		
		Area defined YES [ ]                    NO [ X ]	Air monitoring YES [ ]                    NO [ X ]	Confined Space permit YES [ ]                    NO [ X ]
Fire extinguishers ABC YES [ X ]                    NO [ ]	Decon measures YES [ ]                    NO [ X ]	Tool Box & Formal Meeting YES [ X ]                    NO [ ]		
Two-way communication YES [ X ]                    NO [ ]	Soil Testing YES [ ]                    NO [ X ]	Water Truck YES [ ]                    NO [ X ]		
<b>Hazards controlled as per:</b>		YES [ X ]                    NO [ ]	YES [ ]                    NO [ X ]	YES [ ]                    NO [ X ]
- Respect the speed limits - Do not circulate in restricted areas, watch for signs - Slow down during low visibility conditions - Radio communication		Eye wash station YES [ ]                    NO [ X ]	Spotter YES [ X ]                    NO [ ]	
		Polar Bear monitor YES [ ]                    NO [ X ]	Hot Work Permit YES [ ]                    NO [ X ]	
Kudlik Construction Ltd				
		Name:	Signature:	

Kudlik Construction Ltd				
Hazard Assessment Form - Resolute Bay Landfills Remediation				
Area: AEC-1			Project start date: June 1st 2018	
Task: Work near a sewage lagoon			Project finish date: September 5th, 2019	
Task Activity Description				
Beside AEC-1 and belw the slope of AEC-1 where the lagoon overflow			Task start date: August 1st 2018	
			Task finish date: September 5th, 2019	
Hazards Identified During Assessment		Personal Protective Equipment Required		
Safety Hazards	Biological Hazard	Respirator:	Dermal Protection	Head / Eye Protection
Watch for sewage delivery by the sewage truck	Exposure to sewage and untreated wastewater -Bacteria - Parasites - Viruses	YES [ ] NO [X] TYPE	YES [x] NO [ ] TYPE	YES [X] NO [ ] TYPE
		Half-face respirator [ ]	Leather gloves [ x ]	Hard hat [ x ]
		OV/HEPA filter (as [ ] per air monitoring	Long rubber gloves [ x ]	Safety glasses [x ]
		PAPR(Powered Air [ ] Purifying Respirator	Cotton coveralls [ x ]	Face Shield [ ]
			Reflective vest [ ]	Chemical goggles [ ]
Physical and Ergonomic Hazards	Chemical Hazards	Dust masks [ ]	Coveralls / Tyvek suits [ x ]	Foot Protection
Surface water below the AEC-1 slope could be contaminated with overflow water from the sewage lagoon.  The entigrity of the sewage lagoon shall be preserved, no work is allowed nearby	NA		Rain suit [ ]	YES [X] NO [ ] TYPE
			Warm clothes [ ]	Leather safe boot [ ]
				Rubber safe boot: [ x ]
		Controls Required		
		Area defined YES [x] NO [ ]	Air monitoring YES [ ] NO [x ]	Confined Space permit YES [ ] NO [X ]
	Fire extinguishers ABC YES [ ] NO [x ]	Decon measures YES [ ] NO [x ]	Tool Box & Formal Meeting YES [X] NO [ ]	
	Two-way communication YES [X] NO [ ]	Soil Testing YES [ ] NO [x]	Water Truck YES [ ] NO [X ]	
Hazards controlled as per:		Eye wash station YES [x] NO [ ]	Spotter YES [ ] NO [x ]	
- Proper PPE		Polar Bear monitor YES [X] NO [ ]	Hot Work Permit YES [ ] NO [X ]	
- Education about the hazards of wastewater and sewage				
- Site orientation				
- Hygiene procedures				
		Kudlik Construction Ltd		
		Name:	Signature:	

Kudlik Construction Ltd				
Hazard Assessment Form - Resolute Bay Landfills Remediation				
Area: Airport property: AEC-1 and AEC-2			Project start date: June 1st 2018	
Task: Work near around slopes/Inlines and unstable ground			Project finish date: September 5th, 2019	
Task Activity Description				
- Debris removal and processing at AEC-1 and AEC-2 landfills - Regrading slopes at AEC-1 and AEC-2			Task start date: August 1st 2018	
			Task finish date: September 5th, 2019	
Hazards Identified During Assessment		Personal Protective Equipment Required		
Safety Hazards	Biological Hazard	Respirator:	Dermal Protection	Head / Eye Protection
- Steep and unstable slopes - Rugged terrain - Debris - Sharp objects	NA	YES [ ] NO [X] TYPE	YES [X] NO [ ] TYPE	YES [X] NO [ ] TYPE
		Half-face respirator [ ]	Leather gloves [X]	Hard hat [X]
		OV/HEPA filter (as [ ] per air monitoring	Long rubber gloves [ ]	Safety glasses [X]
		PAPR(Powered Air [ ] Purifying Respirator	Cotton coveralls [ ]	Face Shield [ ]
			Reflective vest [X]	Chemical goggles [ ]
Physical and Ergonomic Hazards	Chemical Hazards	Dust masks [ ]	Coveralls / Tyvek suits [ ]	Foot Protection
- Fall - Cut - Equipment tip over	- Presence of Haz Mat		Rain suit [ ]	YES [X] NO [ ] TYPE
			Warm clothes [ ]	Leather safe boot [X]
				Rubber safe boot: [X]
		Controls Required		
		Area defined YES [X] NO [ ]	Air monitoring YES [ ] NO [X]	Confined Space permit YES [ ] NO [X]
	Fire extinguishers ABC YES [ ] NO [ ]	Decon measures YES [ ] NO [X]	Tool Box & Formal Meeting YES [X] NO [ ]	
	Two-way communication YES [X] NO [ ]	Soil Testing YES [ ] NO [X]	Water Truck YES [ ] NO [X]	
Hazards controlled as per:		Eye wash station YES [ ] NO [ ]	Spotter YES [X] NO [ ]	
- Spotter for trucks - Barricades & signs - Work procedures		Polar Bear monitor YES [X] NO [ ]	Hot Work Permit YES [ ] NO [X]	
		Kudlik Construction Ltd		
		Name:	Signature:	

## INCIDENT REPORT

No

Nº:

Project: _____ Project No.: _____ Preventive Action <input type="checkbox"/> Corrective Action <input type="checkbox"/>		Type of Incident: <input type="checkbox"/> Internal (operations, audit) <input type="checkbox"/> Spill <input type="checkbox"/> Damaged Equipment <input type="checkbox"/> Injury <input type="checkbox"/> Fire <input type="checkbox"/> Leak <input type="checkbox"/> Supplier: _____ <input type="checkbox"/> Client complaint: _____	
Situation Description Date (y-m-d): _____ Time: _____ _____ _____ _____		Impact _____ _____ _____ _____	
Prepared by: _____ Position: _____		Date (y-m-d): _____	

Immediate Actions (special instructions) _____ _____ _____		
Verified by: _____	Site services supervisor: _____	Date (y-m-d): _____
Actions taken to prevent a reoccurrence of the incident _____ _____ _____		
Approved by: _____	Site services supervisor: _____	Date (y-m-d): _____

Verified by: _____	(CQE)	Date (y-m-d): _____
Other by: _____	(Position: _____)	Date (y-m-d): _____

## INCIDENT REPORT

<b>1.1.1.1.2.1 FINAL VERIFICATION</b>		
Corrective/Preventive Action: _____	By: _____	Date (y-m-d): _____
Comments: _____		
_____		
_____		
_____		
_____		
_____		

Estimated Cost: _____	Details of Costs Annexed: <input type="checkbox"/> Yes <input type="checkbox"/> No
-----------------------	--

## SAFETY INSPECTION RECORDING FORM

***Kudlik Construction Ltd.***

### Work Site Safety Inspection

Date: \_\_\_\_\_

Project: ***Resolute Bay environmental remediation***

Inspected by: \_\_\_\_\_

#### Items to watch for:

- |  |                                 |                             |
|--|---------------------------------|-----------------------------|
| 1 Safety Policy posted, Manual available | 10. Hoarding and heating        | 18. Safety Harnesses        |
| 2 Housekeeping                           | 11. Excavation slope protection | 19. Safety training         |
| 3 First-aid                              | 12. Electrical wiring, cords    | 20. Vehicle speed           |
| 4 Scaffolds and ladders                  | 13. Adequate lighting           | 21. Ventilation             |
| 5 PPE - Hard hats/boots/glasses/etc.     | 14. WHMIS information available | 22. Toxic material storage  |
| 6 Hoisting and rigging                   | 15. Explosive actuated tools    | 23. Warning signs, labels   |
| 7 Proper lifting                         | 16. Fire protection equipment   | 24. Smoking restrictions    |
| 8 Hand and Power tools maintained        | 17. Handrails/openings covered  | 25. Materials safely stored |
| 9 Site secure from public                |                                 |                             |

#	Hazard Classification Rating (A,B,C)	Description of Hazard (unsafe condition/practice/procedure)	Corrective Action Plan (describe action(s) taken or to be taken; responsibility assigned to; and by what date)

## SITE INSPECTION CHECKLIST

### *Kudlik Construction Ltd.*

**Project:** Resolute Bay

**Time:** \_\_\_\_\_

**Inspected By:** \_\_\_\_\_ **Date:** \_\_\_\_\_

<b>Public Safety</b>	<input type="checkbox"/> Barricade	<input type="checkbox"/> Signage	<input type="checkbox"/> Safe public passage
	<input type="checkbox"/> Adjoining property	<input type="checkbox"/> Traffic Control	<input type="checkbox"/> Overhead hazards
	<input type="checkbox"/> Sidewalks/roads clean	<input type="checkbox"/> Fencing/hoarding	<input type="checkbox"/> Signage

<b>Excavation</b>	<input type="checkbox"/> Engineer drawings	<input type="checkbox"/> Shoring or sloping	<input type="checkbox"/> Shoring conditions
	<input type="checkbox"/> Engineer inspections	<input type="checkbox"/> at ¾ hor. to 1 vert.	<input type="checkbox"/> Location of
	<input type="checkbox"/> Safe access	<input type="checkbox"/> for banks over four feet high	<input type="checkbox"/> underground utilities

<b>High Voltage Powerlines</b>	<input type="checkbox"/> Clearance being maintained	<input type="checkbox"/> Assurance in writing from utility	<input type="checkbox"/> 30M33 form on site
--------------------------------	---	--	---

<b>Asbestos-Containing Materials</b>	<input type="checkbox"/> Identified	<input type="checkbox"/> Removed by qualified personnel	<input type="checkbox"/> Clearance letter available
--------------------------------------	-------------------------------------	---	---

<b>Structure</b>	<input type="checkbox"/> Material stock piling	<input type="checkbox"/> Illumination	<input type="checkbox"/> Guardrails
	<input type="checkbox"/> Overhead hazards	<input type="checkbox"/> Housekeeping	<input type="checkbox"/> Overhead hazards
	<input type="checkbox"/> Safe access	<input type="checkbox"/> Floor openings protected	<input type="checkbox"/> Foundation

<b>First-aid</b>	<input type="checkbox"/> Attendant	<input type="checkbox"/> First-aid Kit	<input type="checkbox"/> Record Treatment book
	<input type="checkbox"/> Communication and availability	<input type="checkbox"/> Transportation to medical aid	

<b>Personal Protective Equipment</b>	<input type="checkbox"/> Hard hats	<input type="checkbox"/> Hearing protection	<input type="checkbox"/> Life jackets
	<input type="checkbox"/> Safety footwear	<input type="checkbox"/> Fall Protection Equipment	<input type="checkbox"/> Respirators
	<input type="checkbox"/> Safety glasses	<input type="checkbox"/> Gloves	

<b>Traffic Control</b>	<input type="checkbox"/> Barricades or cones	<input type="checkbox"/> Stop paddles, flags	<input type="checkbox"/> High visibility vests
	<input type="checkbox"/> Trained flag person(s)	<input type="checkbox"/> Wide load sign working	

<b>Cranes</b>	<input type="checkbox"/> Operator Inspections	<input type="checkbox"/> Manufacture's manual	<input type="checkbox"/> Oil leaks
	<input type="checkbox"/> Log book	<input type="checkbox"/> Safety latches	<input type="checkbox"/> Sling charts

<b>Rigging, Slings and Chains</b>	<input type="checkbox"/> Check for wear	<input type="checkbox"/> S.W.L. tags on	<input type="checkbox"/> Properly stored
	<input type="checkbox"/> Stretched links	<input type="checkbox"/> Hooks	

## INSPECTION CHECKLIST

### ***Kudlik Construction Ltd.***

<b>Lifting Equipment and Shoring</b>	<input type="checkbox"/> Hose <input type="checkbox"/> Hydraulic jacks <input type="checkbox"/> Screw jacks	<input type="checkbox"/> Pump jacks <input type="checkbox"/> Rollers <input type="checkbox"/> Pillow Blocks	<input type="checkbox"/> Timbers
<b>Tools and Equipment</b>	<input type="checkbox"/> Chain saw <input type="checkbox"/> Powder actuated tools <input type="checkbox"/> Lock-out procedures	<input type="checkbox"/> Circular saws <input type="checkbox"/> Hand tools <input type="checkbox"/> Operating Procedures	<input type="checkbox"/> Drills <input type="checkbox"/> Guards
<b>Oxy-Acetylene</b>	<input type="checkbox"/> Bottles tied up <input type="checkbox"/> Flash back arrestors <input type="checkbox"/> Regulator working	<input type="checkbox"/> Hoses in good shape <input type="checkbox"/> Lifting cage <input type="checkbox"/> Safety goggles available	<input type="checkbox"/> Lens on regulators <input type="checkbox"/> Regulator stored free of grease
<b>Ladders</b>	<input type="checkbox"/> Non slip base <input type="checkbox"/> Extends 3' beyond platform	<input type="checkbox"/> Rungs not defective <input type="checkbox"/> Angled at 4:1 ratio	<input type="checkbox"/> Rails not defective <input type="checkbox"/> Workers not on top two steps
<b>Scaffolds</b>	<input type="checkbox"/> All braces on <input type="checkbox"/> Level and plumb Secured to structure	<input type="checkbox"/> All connections on <input type="checkbox"/> Guardrails	<input type="checkbox"/> Firm base <input type="checkbox"/> Planks (min. 20" platform) <input type="checkbox"/>
<b>Fire Prevention</b>	<input type="checkbox"/> Fire extinguishers	<input type="checkbox"/> Exits	<input type="checkbox"/> Flammables stored safely
<b>WHMIS</b>	<input type="checkbox"/> Labels on <input type="checkbox"/> Protective and spill equipment available	<input type="checkbox"/> MSDS for controlled products	<input type="checkbox"/> Workers trained in controlled products
<b>Safety Program</b>	<input type="checkbox"/> Toolbox talk minutes <input type="checkbox"/> Safety Orientation	<input type="checkbox"/> Following site rules <input type="checkbox"/> Training procedures	<input type="checkbox"/> Following safe work





Canada

# NT-NU SPILL REPORT

OIL, GASOLINE, CHEMICALS AND OTHER HAZARDOUS MATERIALS

NT-NU 24-HOUR SPILL REPORT LINE

TEL: (867) 920-8130

FAX: (867) 873-6924

EMAIL: spills@gov.nt.ca

A	REPORT DATE: MONTH – DAY – YEAR		REPORT TIME	<input type="checkbox"/> ORIGINAL SPILL REPORT, OR <input type="checkbox"/> UPDATE # TO THE ORIGINAL SPILL REPORT	<b>REPORT LINE USE ONLY</b> REPORT NUMBER -
	OCCURRENCE DATE: MONTH – DAY – YEAR		OCCURRENCE TIME		
C	LAND USE PERMIT NUMBER (IF APPLICABLE)		WATER LICENCE NUMBER (IF APPLICABLE)		
D	GEOGRAPHIC PLACE NAME OR DISTANCE AND DIRECTION FROM THE NAMED LOCATION			REGION <input type="checkbox"/> NWT <input type="checkbox"/> NUNAVUT <input type="checkbox"/> ADJACENT JURISDICTION OR	
E	LATITUDE DEGREES      MINUTES      SECONDS		LONGITUDE DEGREES      MINUTES      SECONDS		
F	RESPONSIBLE PARTY OR VESSEL NAME		RESPONSIBLE PARTY ADDRESS OR OFFICE LOCATION		
G	ANY CONTRACTOR INVOLVED		CONTRACTOR ADDRESS OR OFFICE LOCATION		
H	PRODUCT SPILLED		QUANTITY IN LITRES, KILOGRAMS OR CUBIC METRES	U.N. NUMBER	
	SECOND PRODUCT SPILLED (IF APPLICABLE)		QUANTITY IN LITRES, KILOGRAMS OR CUBIC METRES	U.N. NUMBER	
I	SPILL SOURCE		SPILL CAUSE	AREA OF CONTAMINATION IN SQUARE METRES	
J	FACTORS AFFECTING SPILL OR RECOVERY		DESCRIBE ANY ASSISTANCE REQUIRED	HAZARDS TO PERSONS, PROPERTY OR ENVIRONMENT	
K	ADDITIONAL INFORMATION, COMMENTS, ACTIONS PROPOSED OR TAKEN TO CONTAIN, RECOVER OR DISPOSE OF SPILLED PRODUCT AND CONTAMINATED MATERIALS				
L	REPORTED TO SPILL LINE BY	POSITION	EMPLOYER	LOCATION CALLING FROM	TELEPHONE
M	ANY ALTERNATE CONTACT	POSITION	EMPLOYER	ALTERNATE CONTACT LOCATION	ALTERNATE TELEPHONE
<b>REPORT LINE USE ONLY</b>					
N	RECEIVED AT SPILL LINE BY	POSITION <b>Station operator</b>	EMPLOYER	LOCATION CALLED <b>Yellowknife, NT</b>	REPORT LINE NUMBER <b>(867) 920-8130</b>
LEAD AGENCY <input type="checkbox"/> EC <input type="checkbox"/> CCG <input type="checkbox"/> GNWT <input type="checkbox"/> GN <input type="checkbox"/> ILA <input type="checkbox"/> INAC <input type="checkbox"/> NEB <input type="checkbox"/> TC			SIGNIFICANCE <input type="checkbox"/> MINOR <input type="checkbox"/> MAJOR <input type="checkbox"/> UNKNOWN		FILE STATUS <input type="checkbox"/> OPEN <input type="checkbox"/> CLOSED
AGENCY		CONTACT NAME	CONTACT TIME	REMARKS	
LEAD AGENCY					
FIRST SUPPORT AGENCY					
SECOND SUPPORT AGENCY					
THIRD SUPPORT AGENCY					

## **APENDIX 3**

### **FIGURES**

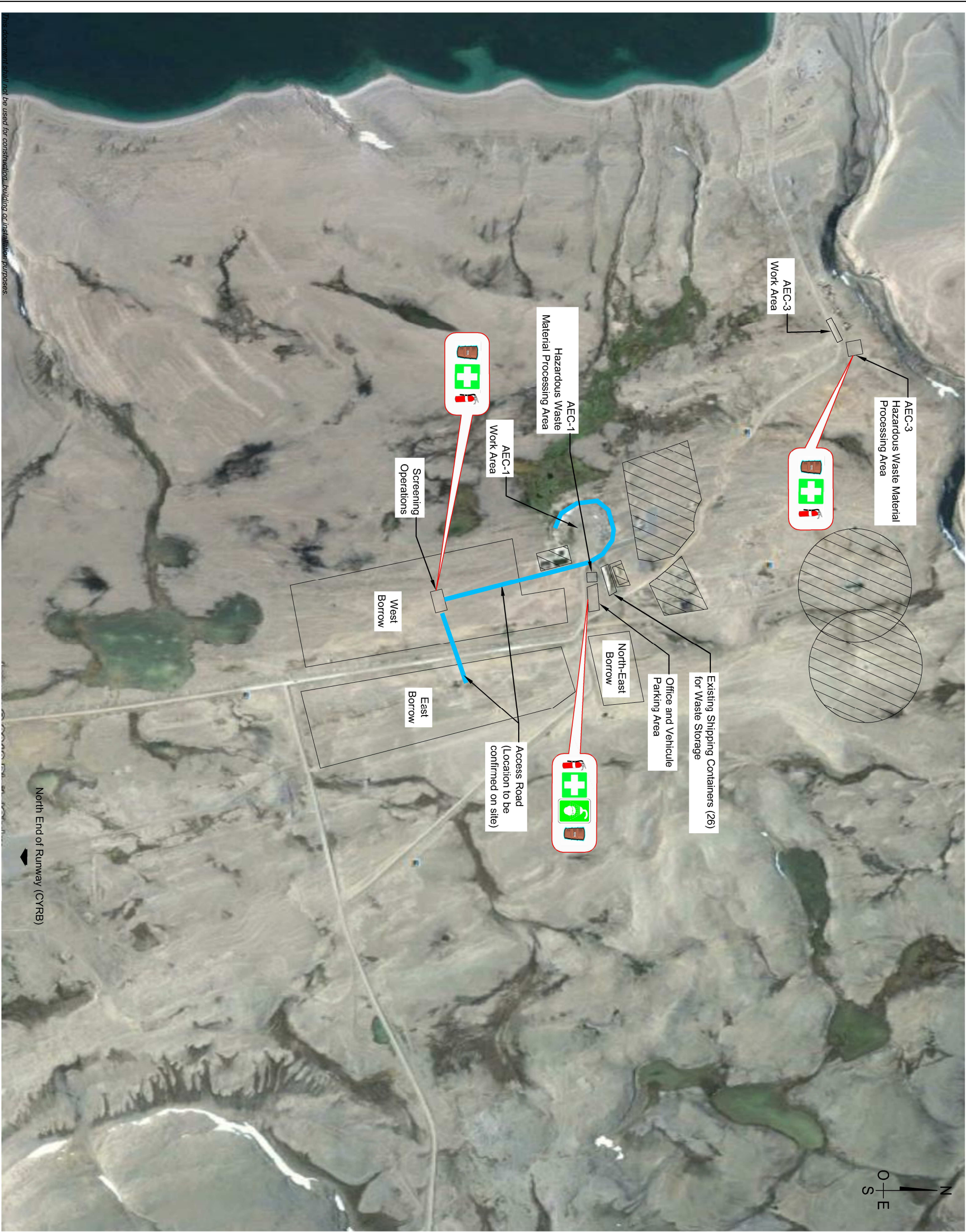
#### **Health and Safety Plan**

##### ***Resolute Bay Landfills Remediation***

##### **Attachments:**

- Figure 1: Site Plan and work areas AEC-1 & AEC-2
- Figure 2: Site Plan and work area AEC-3





This document shall not be used for construction, building or installation purposes.

North End of Runway (CYRB)

Legend

Work Area and activities (~)

Access road (~)

Restricted Area (~)

Spill Kit

First Aid

Fire Extinguisher

Eyewash

(~) : approximative position

Source:  
• PlexEarth, Satellite image, 2016-06-08



CONFIDENTIEL

Figure 1  
Site Plan and Work Areas  
AEC-1 & AEC-3

RESOLUTE BAY LANDFILLS REMEDIATION

Presented to:

Public Services and  
Procurement Canada

Property located at:  
Resolute Bay, Nunavut

Drawn by: J. Croteau	Verified by: J. Wollenberg	Approved by: J. Godin
Date: 2018-06-15	Drawing no.: QE18-105-1-01   A	Geodetic reference: None   None

Kudlik Construction Ltd.  
AMERIKK-PAK-ONE 40001



