

APPENDIX A

Figures

- Figure 1: Overview Map
- Figure 2: Key Plan and Site Location
- Figure 3: Roberts Bay Mine Site – Overview
- Figure 4: Roberts Bay Mine Site – Site Plan
- Figure 5: Ida Bay Mine Site – Site Plan
- Figure 6: Waterbodies Sampled as Part of the Doris North Project proximate to the Roberts Bay Mine Site
- Figure 7: Archaeological Sites Identified Proximate to the Roberts Bay and Ida Bay Mine Sites
- Figures 8: Approximate Location of the Roberts Bay Mine Site with Respect to the Doris North Project



Scale: 1:10,000,000



Reference

Base Data: National Atlas, scale 1:7.5 million.

CLIENT:

Public Works and Government Services Canada

PROJECT:

Environmental Assessment of the Remediation of the Proposed Roberts Bay and Ida Bay Abandoned Mine Sites

Overview Map

DATE:
January 2007

ANALYST:
BWS

Figure 1

JOB No:
VE51612

QA/QC:
BWS

PDF FILE:
VE51612_overview_map.pdf

GIS FILE:
VE51612_overview_map.mxd

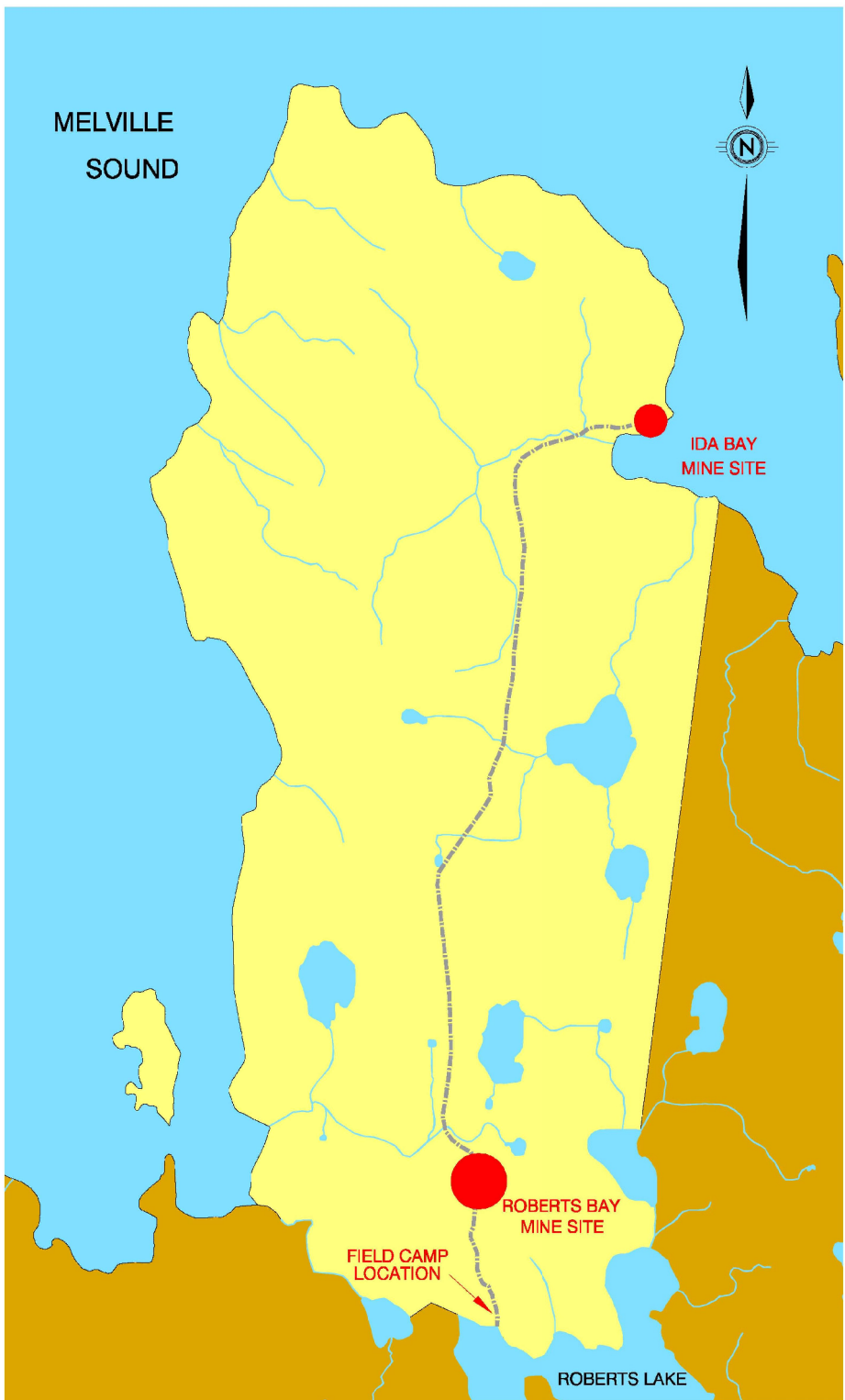
PROJECTION:
Lambert Conformal Conic

DATUM:
NAD83





GENERAL AREA OVERVIEW
NOT TO SCALE



ROBERTS BAY & IDA BAY MINE SITE OVERVIEW

Reference: Roberts Bay and Ida Bay Abandoned Mine Sites Remediation Plan (Draft), AMEC Earth & Environmental, March 2006

CLIENT:
PUBLIC WORKS AND GOVERNMENT SERVICES CANADA

AMEC Earth & Environmental
2227 Douglas Road, Burnaby, B.C., V5C 5A9
Tel. 604-294-3811 Fax 604-294-4664



DWN BY: BWS
CHK'D BY: SNB
DATUM: -
PROJECTION: -
SCALE: AS SHOWN

PROJECT
**ENVIRONMENTAL ASSESSMENT OF THE
REMEDATION OF THE PROPOSED ROBERTS BAY
AND IDA BAY ABANDONED MINE SITES**

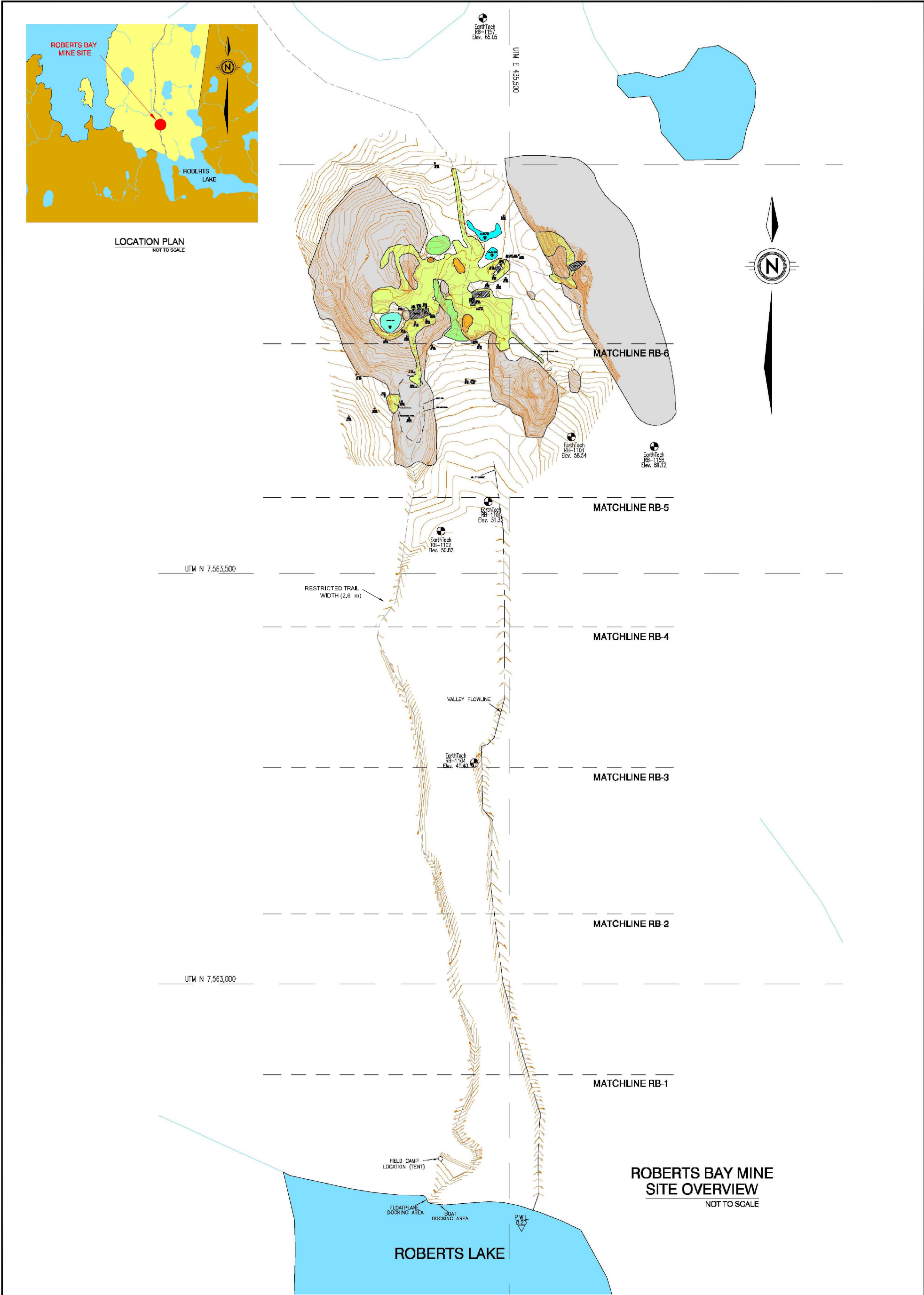
TITLE
KEY PLAN AND SITE LOCATION

DATE:
JANUARY 2007

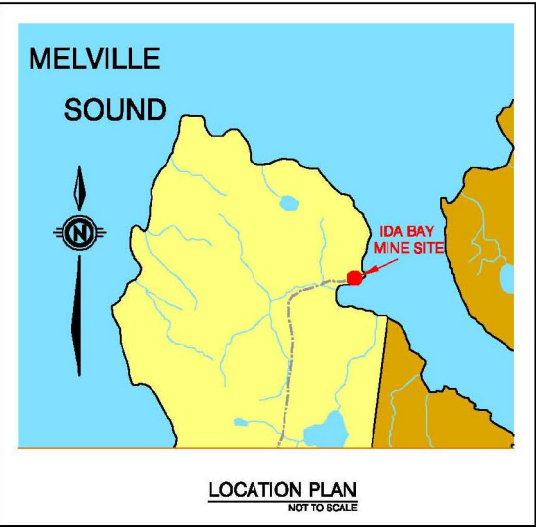
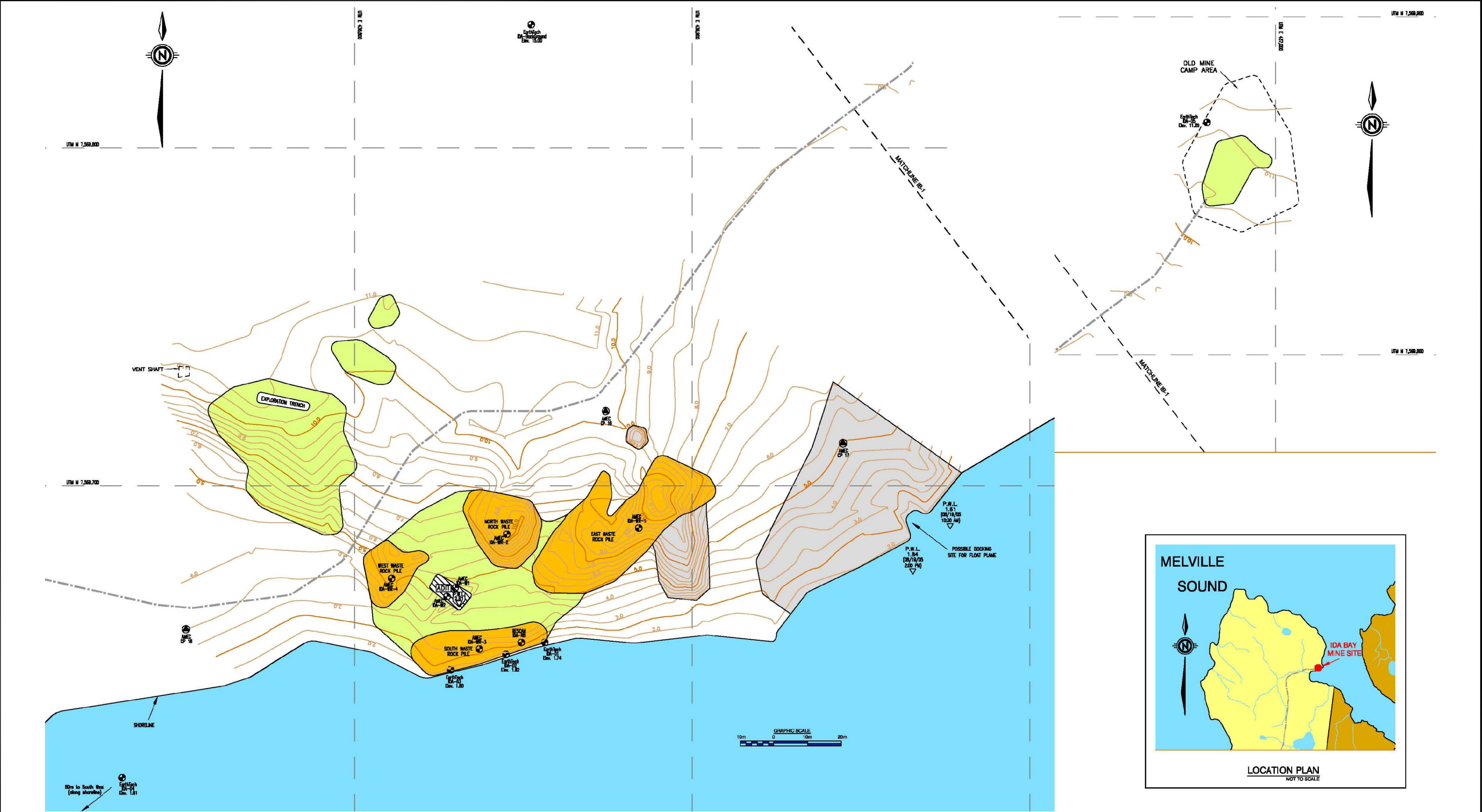
PROJECT NO:
VE51612

REV. NO.:
A

FIGURE No.
FIGURE 2



Reference: Roberts Bay and Ida Bay Abandoned Mine Sites Remediation Plan (Draft), AMEC Earth & Environmental, March 2006			
CLIENT PUBLIC WORKS AND GOVERNMENT SERVICES CANADA	DWN BY: BWS	PROJECT ENVIRONMENTAL ASSESSMENT OF THE PROPOSED REMEDIATION OF THE ROBERTS BAY AND IDA BAY ABANDONED MINE SITES	REV. NO.: A
	CHK'D BY: SNB		DATE: JANUARY 2007
AMEC Earth & Environmental 2227 Douglas Road, Burnaby, B.C., V5C 5A9 Tel. 604-294-3811 Fax 604-294-4664	DATUM: -	TITLE ROBERTS BAY MINE SITE - OVERVIEW	PROJECT NO: VE51612
	PROJECTION: -		FIGURE No.
	SCALE: AS SHOWN		FIGURE 3



Reference: Roberts Bay and Ida Bay Abandoned Mine Sites Remediation Plan (Draft), AMEC Earth & Environmental, March 2006

LEGEND:			
	WASTE ROCK PILE		WASTE ROCK AREA
	ROCK OUTCROP		OVERBURDEN AREA
	TRAIL (ROUGH QUAD ONLY)		CONCRETE AREA
	P.W.L. PRESENT WATER LEVEL		TESTHOLE LOCATION

CLIENT:
PUBLIC WORKS AND GOVERNMENT SERVICES CANADA

AMEC Earth & Environmental
2227 Douglas Road, Burnaby, B.C., V5C 5A9
Tel. 604-294-3811 Fax 604-294-4664

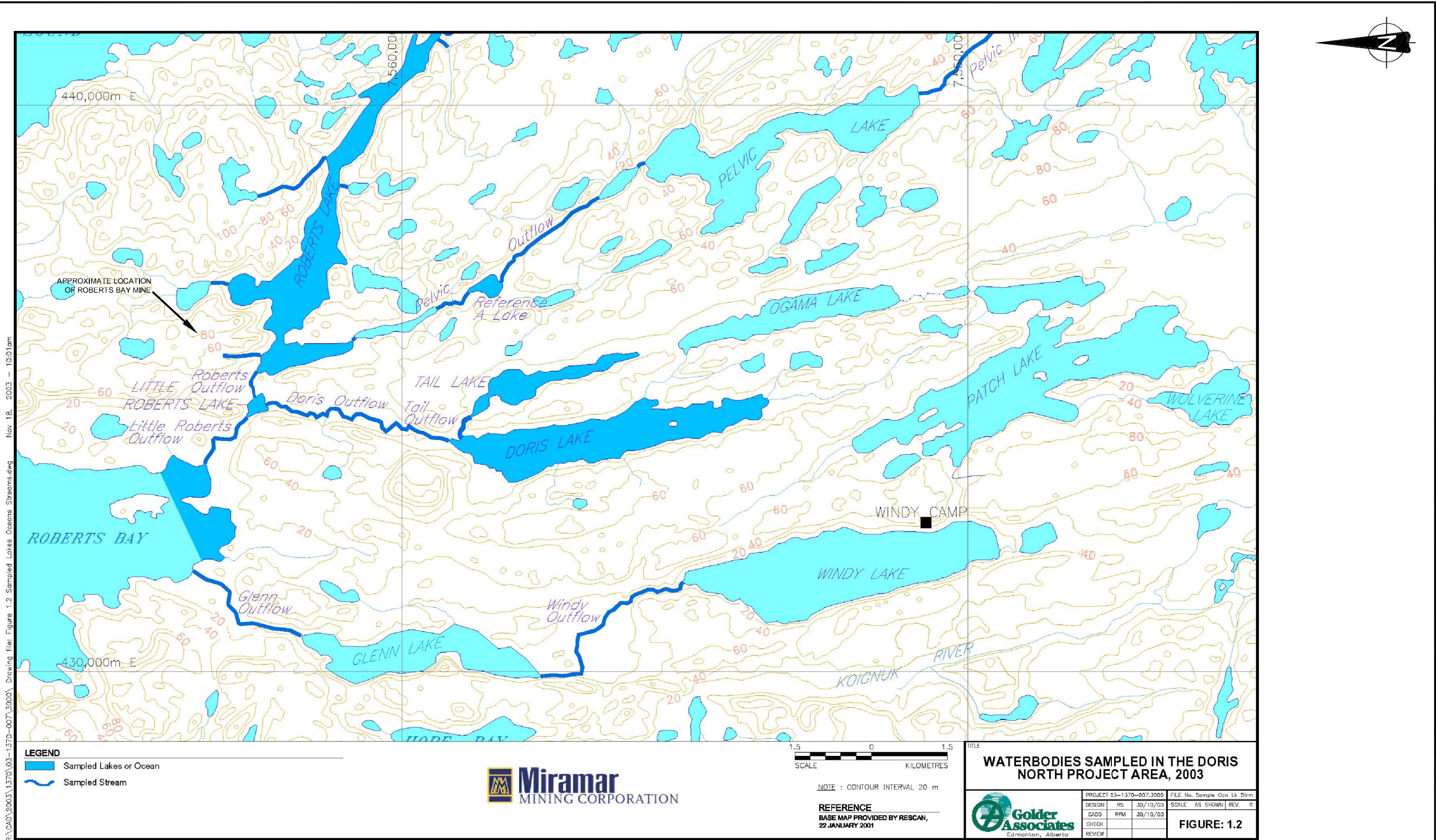


DWN BY:	BWS
CHK'D BY:	SNB
DATUM:	-
PROJECTION:	-
SCALE:	AS SHOWN

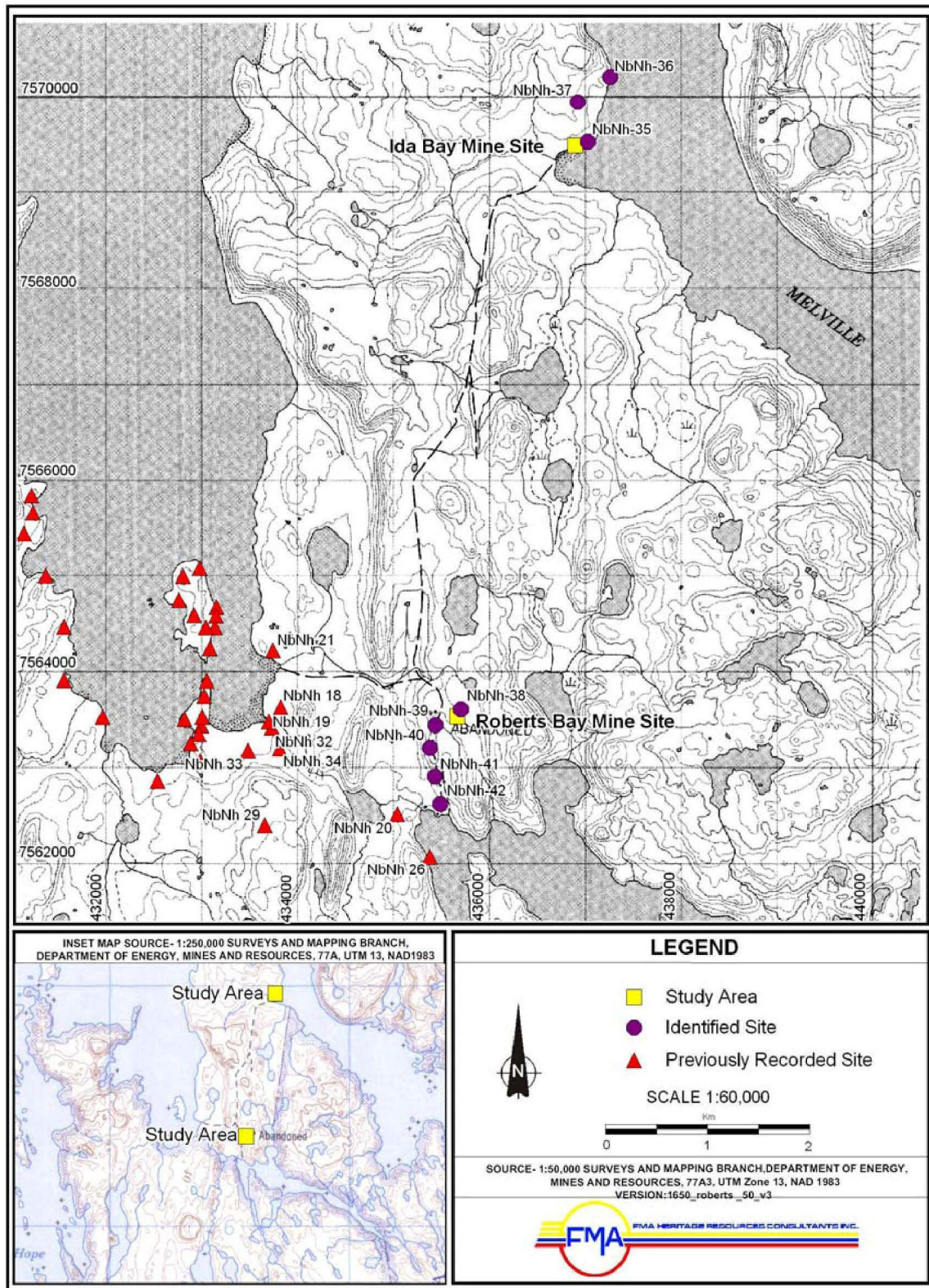
PROJECT
**ENVIRONMENTAL ASSESSMENT OF THE PROPOSED REMEDIATION
OF THE ROBERTS BAY AND IDA BAY ABANDONED MINE SITES**

TITLE
IDA BAY MINE SITE - SITE PLAN

DATE:	JANUARY 2007
PROJECT NO:	VE51612
REV. NO.:	A
FIGURE No.	FIGURE 5

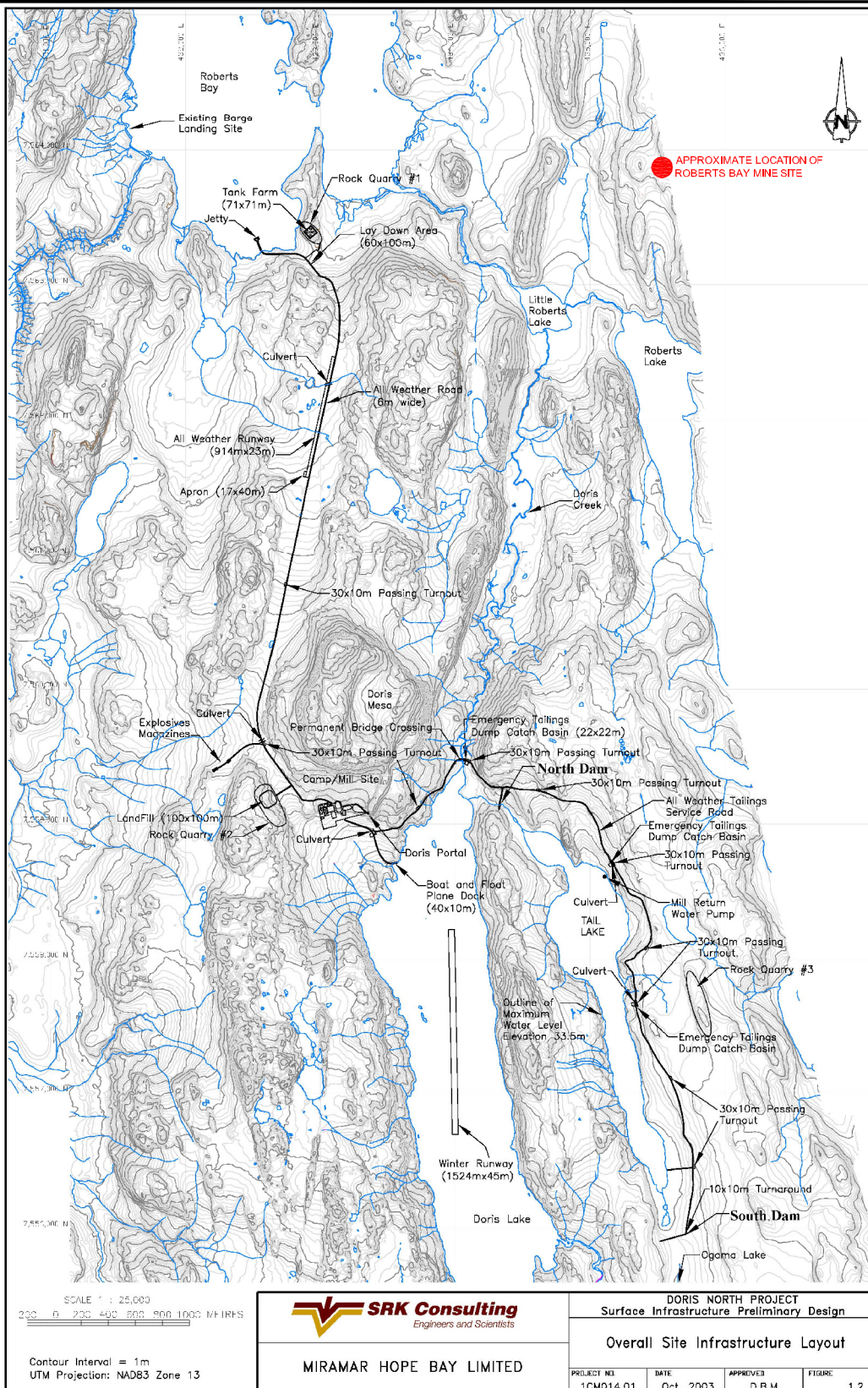


Reference: Doris North Project Aquatic Studies 2003, RL&L Environmental Services Ltd./Golder Associates Ltd., November 2003.	CLIENT:		DWN BY:	BWS	PROJECT ENVIRONMENTAL ASSESSMENT OF THE REMEDIATION OF THE PRPOSED ROBERTS BAY AND IDA BAY ABANDONED MINE SITES	DATE: JANUARY 2007
	PUBLIC WORKS AND GOVERNMENT SERVICES CANADA		CHK'D BY:	SNB		PROJECT NO: VE51612
	AMEC Earth & Environmental 2227 Douglas Road, Burnaby, B.C., V5C 5A9 Tel. 604-294-3811 Fax 604-294-4664		DATUM:	-	TITLE WATERBODIES SAMPLED AS PART OF DORIS NORTH PROJECT PROXIMATE TO THE ROBERTS BAY MINE SITE	REV. NO.: A
			PROJECTION:	-		FIGURE No. FIGURE 6
			SCALE:	AS SHOWN		



Reference: Archaeological Impact Assessment: Ida Bay and Roberts Bay Mine Sites Remediation Program, FMA
Heritage Resources Consultants Inc., November 2006

AMEC Earth & Environmental 2227 Douglas Road, Burnaby, B.C., V5C 5A9 Tel. 604-294-3811 Fax 604-294-4664				CLIENT PUBLIC WORKS AND GOVERNMENT SERVICES CANADA	
PROJECT ENVIRONMENTAL ASSESSMENT OF THE REMEDIATION OF THE PROPOSED ROBERTS BAY AND IDA BAY ABANDONED MINE SITES		DWN BY: BWS	DATUM: -	DATE: JANUARY 2007	
TITLE ARCHAEOLOGICAL SITES IDENTIFIED PROXIMATE TO THE ROBERTS BAY AND IDA BAY MINE SITES		CHK'D BY: SNB	REV. NO.: A	PROJECT NO: VE51612	
		PROJECTION: -	SCALE: AS SHOWN	FIGURE No. FIGURE 7	



Reference: Project Description and Alternatives: Doris North Project, AMEC Earth & Environmental, November 2003

AMEC Earth & Environmental

2227 Douglas Road, Burnaby, B.C., V5C 5A9
Tel. 604-294-3811 Fax 604-294-4664



CLIENT

PUBLIC WORKS AND GOVERNMENT SERVICES CANADA

PROJECT ENVIRONMENTAL ASSESSMENT OF THE REMEDIATION OF THE PROPOSED ROBERTS BAY AND IDA BAY ABANDONED MINE SITES

TITLE APPROXIMATE LOCATION OF ROBERTS BAY MINE SITE WITH RESPECT TO THE DORIS NORTH PROJECT

DWN BY: BWS DATUM: - DATE: JANUARY 2007

CHK'D BY: SNB REV. NO.: A PROJECT NO: VE51612

PROJECTION: - SCALE: AS SHOWN FIGURE No. FIGURE 8