

Project Photographs

Long Term Monitoring, 2017
PIN-D, Ross Point, Nunavut



Photo: 21

Date:

August 2, 2017

Description:

Bullet casing

Location:

Access road to main station
area.

Direction Taken:

N/A



Photo: 22

Date:

August 2, 2017

Description:

Hare scat

Location:

Access road to main station
area.

Direction Taken:

N/A

Project Photographs

Long Term Monitoring, 2017
PIN-D, Ross Point, Nunavut



Photo: 23

Date:

August 2, 2017

Description:

View of caribou bones
southwest of the NHL area.

Location:

SW of NHL area (P56)

Direction Taken:

N/A

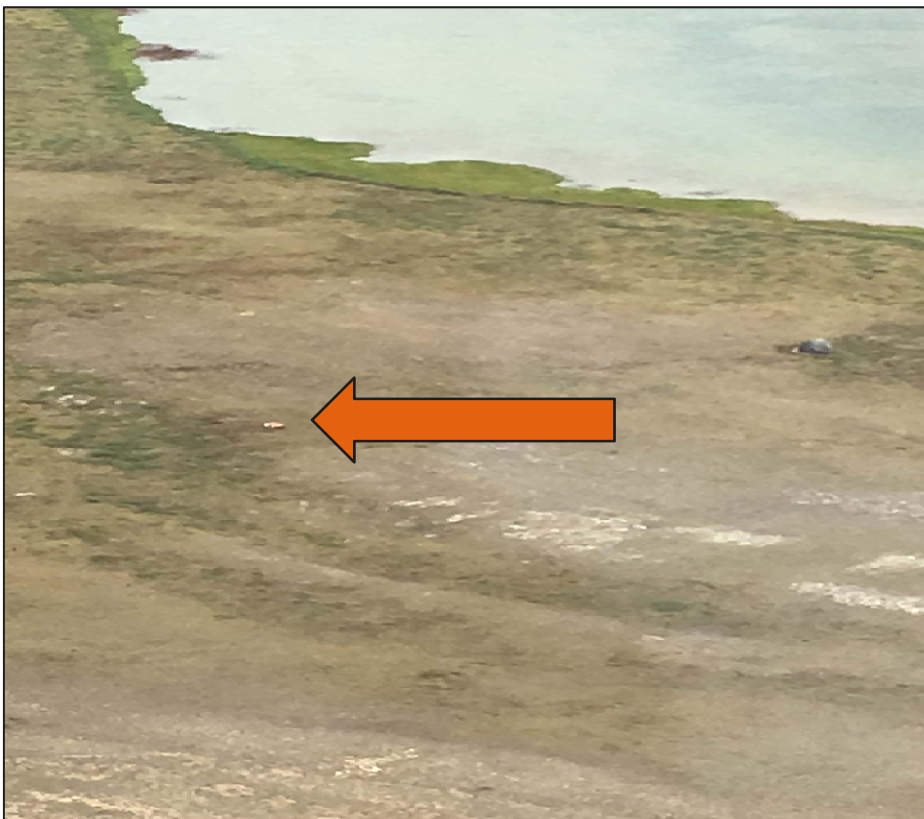


Photo: 24

Date:

August 2, 2017

Description:

View of two red steel drums,
with unknown contents,
located several kilometres
east of the runway area.

Location:

East of NHL area (P61)

Direction Taken:

N/A