

GENERAL NOTES:

1. ALL COORDINATES ARE REFERENCED TO NAD 83, UTM ZONE 17 N, BASED ON CHM1 AND CHM2.

2. SITE PLANS AND TOPOGRAPHIC INFORMATION ARE BASED ON AIR PHOTOS AND SURVEYS, AS SHOWN.

3. BORROW AREA, INFORMATION AND TEST PIT LOCATIONS AS SHOWN ON THE DRAWINGS HAVE BEEN PROVIDED BY EBA ENGINEERING CONSULTANTS LTD.

4. INFORMATION REGARDING DELINEATION AND SOIL TESTING OF CONTAMINATED AREAS PROVIDED BY EARTHTECH CANADA INC.

5. KEY TRENCH 1.0m BELOW EXISTING GROUND, EXCAVATION DEPTH TO BE FIELD CONFIRMED BY THE SITE ENGINEER, BASED ON THE PRESENCE OF SATURATED GROUND.

6. ALL SURFACE DEBRIS IS TO BE REMOVED FROM ALL CONTAMINATED SOIL AREAS AND EXISTING AND NEW LANDFILL AREAS PRIOR TO PLACEMENT ON EXCAVATION TAKING PLACE.

7. FOR GROUND TEMPERATURE CABLE INSTALLATION DETAILS, SEE DWG. C12.

8. EXACT LOCATIONS TO BE FIELD DETERMINED BY THE ENGINEER.

LEGEND:

25m

2004 CONTOURS

COORDINATE POINT

VERTICAL GROUND TEMPERATURE CABLE INSTALLATION (4)

PRELIMINARY  
NOT FOR CONSTRUCTION

REGISTERED PROFESSIONAL ENGINEER  
R.H. SCHMIDTKE  
LICENSEE (N.W.T.)

THE ASSOCIATION OF PROFESSIONAL ENGINEERS, GEOSCIENTISTS AND EARTHSCIENTISTS OF THE NORTHWEST TERRITORIES  
MEMBER NUMBER 007  
UMA ENGINEERING LTD.

uma  
an AECOM Company

DESIGNED FOR TRENCH		ISSUED FOR DATE DESIGN SUBMISSION	06/02/03
DESIGNED FOR CLIENT REVIEW		ISSUED FOR DATE REVIEW	06/02/03
DESIGNED FOR WORK PLAN		ISSUED FOR WORK PLAN	06/01/07
REVISIONS		DESCRIPTION	DATE

A

number du détail

B

source drawing no.

C

détail on drawing no.

A

number du détail

B

source drawing no.

C

détail on drawing no.

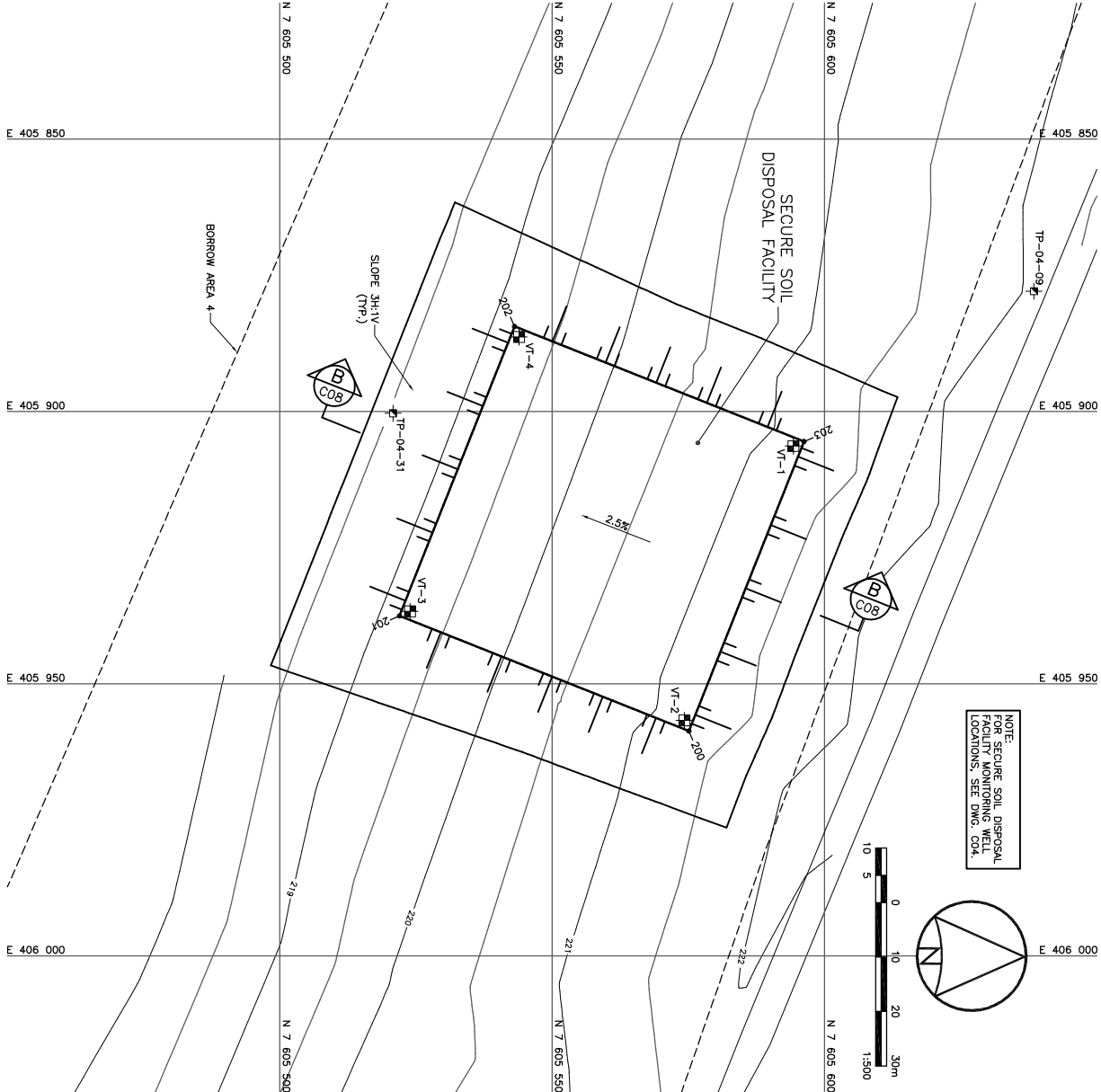
CAM-F Intermediate Dew Line Site  
SARCPA LAKE  
Site Restoration

Nunavut

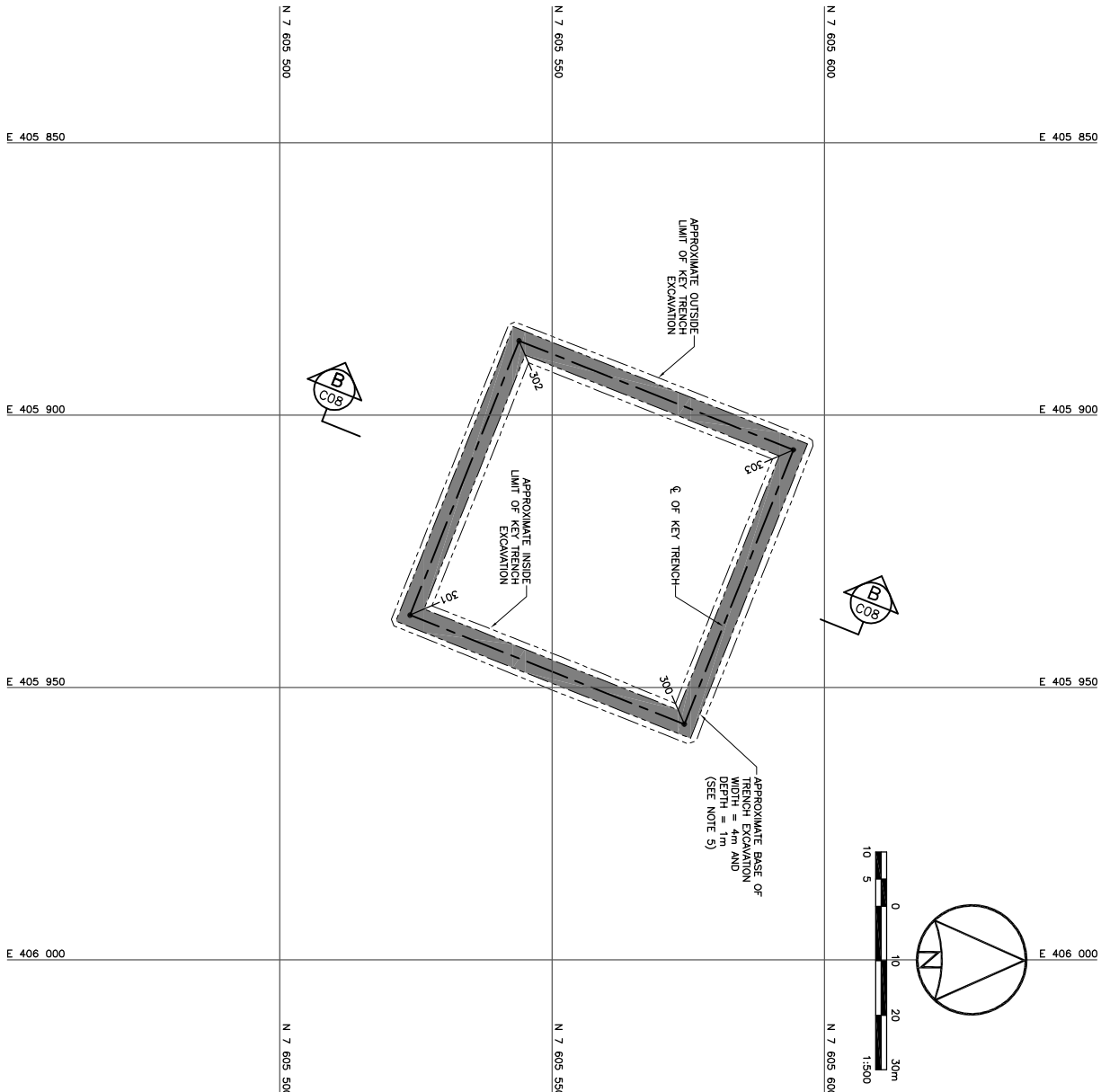
SECURE SOIL DISPOSAL FACILITY  
KEY TRENCH EXCAVATION PLAN &  
GRADING / INSTRUMENTATION PLAN

designed by	T. JACQUIN	checked by	
drawn by	D. JERGEN	drawing per	
approved by	R. SCHMIDTKE	approved per	
PMSC Project Manager	J. BUCHHEIM	Administrateur de Projets, PMSC	

drawn	AS SHOWN	sheet	C07
project no.	413334	proj. no.	
date	FEBRUARY, 2003	date	OF 12



GRADING/INSTRUMENTATION PLAN



KEY TRENCH EXCAVATION PLAN

COORDINATE POINTS KEY TRENCH EXCAVATION		
NO.	NORTHING	EASTING
300	7 605 574.3	405 946.7
301	7 605 523.9	405 936.7
302	7 605 543.9	405 886.3
303	7 605 594.3	405 906.4

COORDINATE POINTS SECURE SOIL DISPOSAL FACILITY			
NO.	NORTHING	EASTING	ELEV.
200	7 605 575.1	405 958.7	226.03
201	7 605 521.9	405 937.6	224.57
202	7 605 543.1	405 884.4	224.60
203	7 605 596.2	405 905.5	226.03