

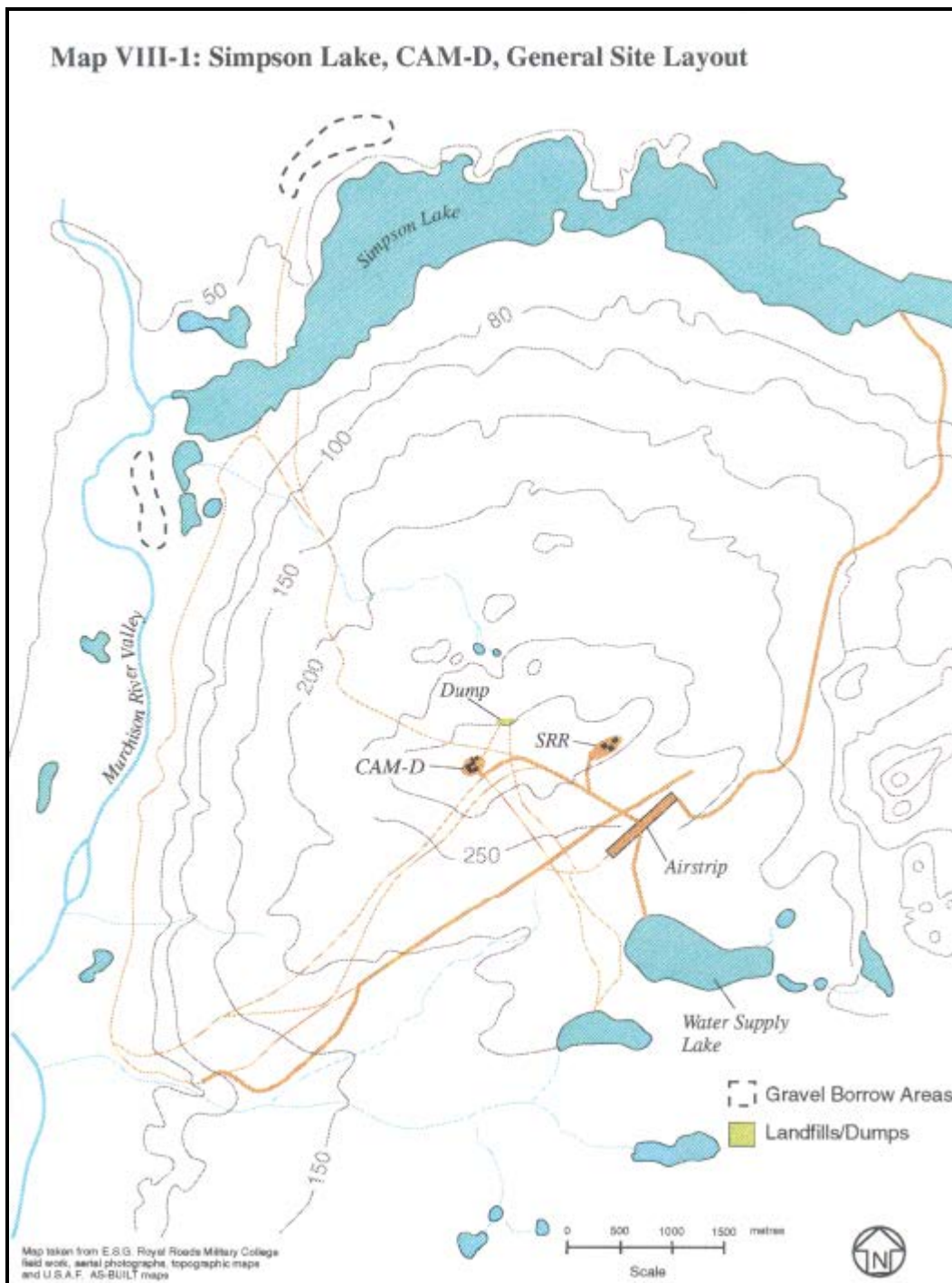


Source Earth Tech (2006)

**Figure 1:** CAM-D (Simpson Lake) General Location

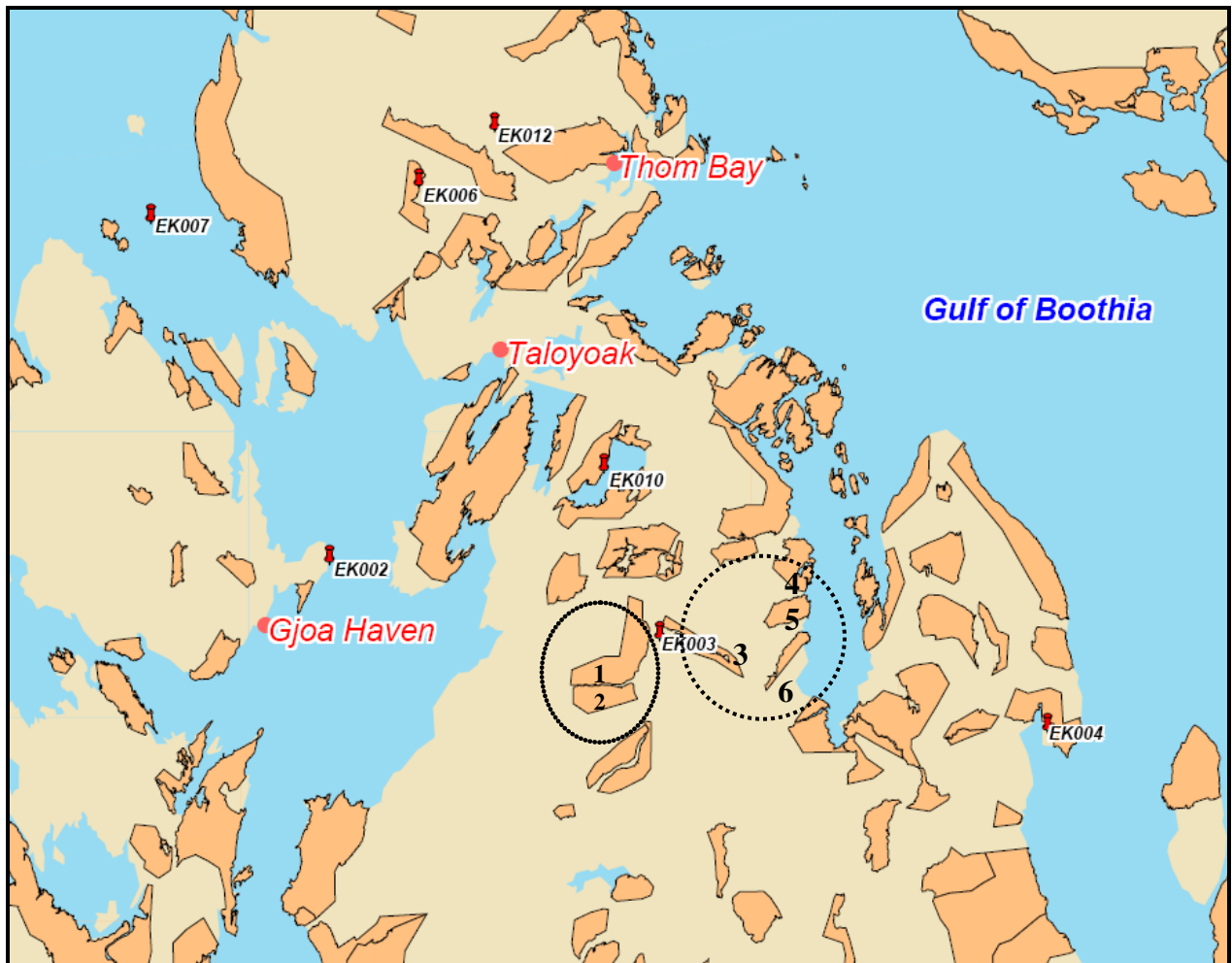


**Figure 2: CAM-D (Simpson Lake) Site Location**



Source ESG (1995)

**Figure 3:** CAM-D (Simpson Lake) Site Layout



Source INAC (2007)

**Figure 4:** Inuit Owned Land (IOL) parcels identified to the east and west of CAM-D (EK003, Simpson Lake) which may be accessed, by winter cat train route, to and from CAM-D (mobilization/demobilization activities) during the winters of 2008/09 and 2009/10.

IOLs to the west of EK003 (2 parcels):

1. (north parcel) SB-05
2. (south parcel) SB-04

IOL to the east of EK003 (4 parcels):

3. (nearest eastern parcel) PB-51
4. (clockwise, northern parcel on coast) PB-52
5. (eastern parcel on coastline) PB-50
6. (south-eastern parcel) PB-49