

October 14, 2009

To  
Nunavut Water Board  
P.O. Box 119  
Gjoa Haven, NU  
X0B 1J0  
Attention: David Hohnstein, Acting Director of Technical Services

Reference: Water licence #1BR-SIM0813 modification  
Remediation of CAM-D DEW Line site

Mr. Hohnstein,

In reference with previous correspondences, we are requesting some modifications to the water licence no. 1BR-SIM0813. In order to support our camp operations for the abovementioned project, we would like to use a waste water treatment plant instead of sewage lagoons, as indicated in the water licence. All details regarding the waste water treatment unit are presented in the following attached documents:

- Kodiak Technology
- Design and Calculation
- Components
- Warnings

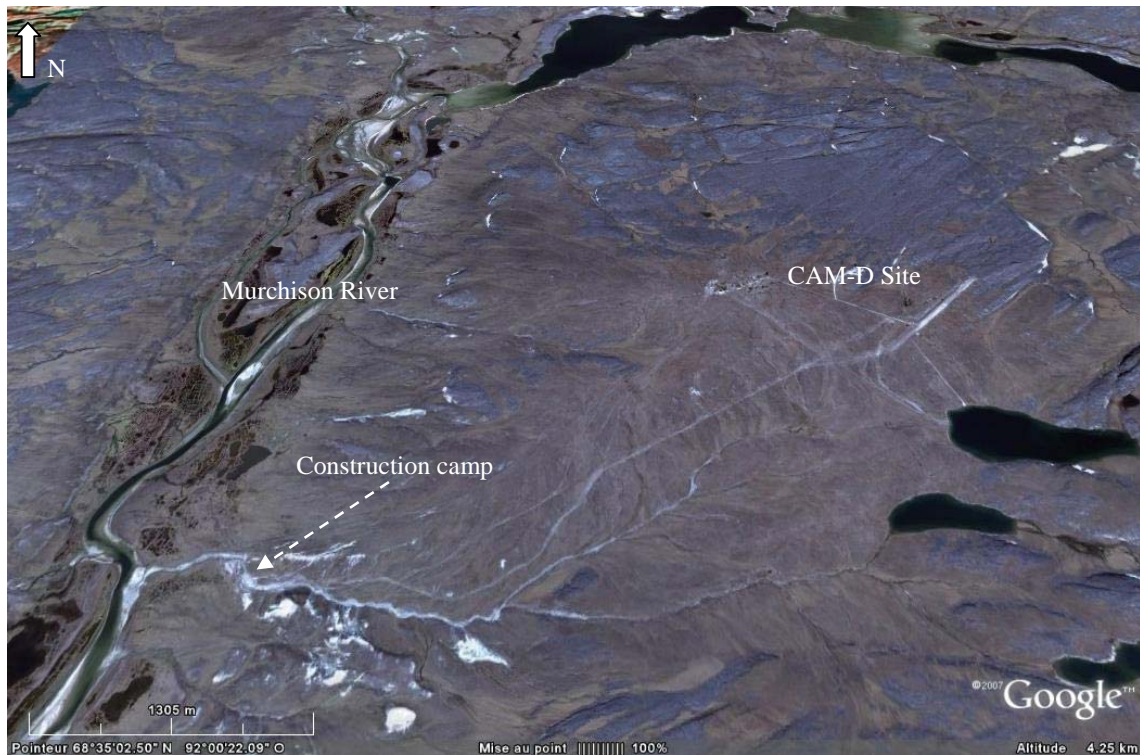
With respect to Water Licence Part E, Item 4, all details regarding the sludge management and the unit operation are presented in the following attached document:

- Maintenance Manual

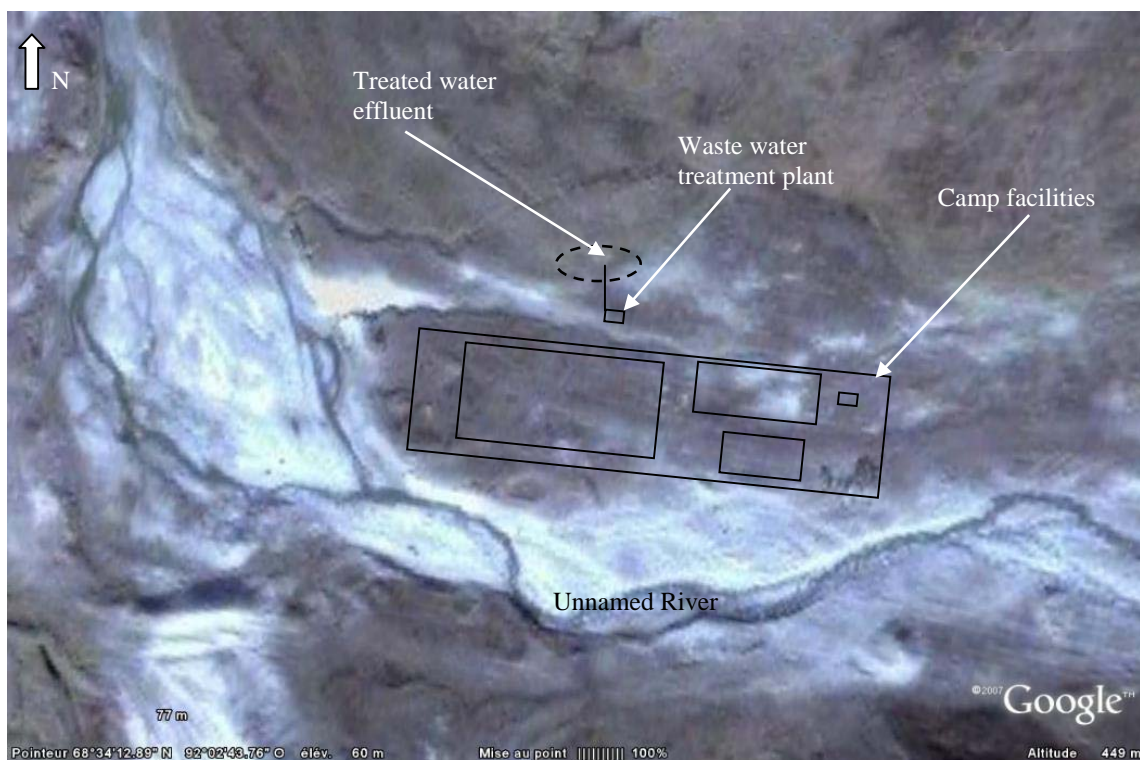
As indicated in the maintenance manual, a lined lagoon will be built nearby the treatment plant. This lagoon will be used to contain waste water in the event that the treatment plant must be temporary shut down. The lagoon will be designed to contain the camp waste water during a complete week, which represents about 45,000 litres. This lagoon will also be used to treat the sludge removed from the unit, as explained in the shut down procedure. According to the analytical results, the sludge will be disposed into the project landfill or containerized and shipped out to the appropriate treatment facility.

The construction camp will be located nearby an unnamed river, which is a tributary of the Murchison River, as indicated on figure 1. The area is mainly flat, covered with sand and gravel and already disturbed by past activities. The treated water will be discharged on a flat area located north of the construction camp, as showed on figure 2.

**Figure 1: Site map**



**Figure 2: Treated water effluent location**



The exact location of the treatment plan as well as the effluent discharge point will be transmitted to the Water Board, as per licence requirements.

As discussed earlier, the effluent quality would be monitored at the beginning, the mid-way and near the end of the construction seasons. Only one monitoring station would be required. The water samples would be taken directly at the plant water outlet.

If you need additional information, don't hesitate to contact us.

Best regards

---

Francois Bourassa, P.Eng.  
Site Project Manager  
Kudlik Construction Ltd.