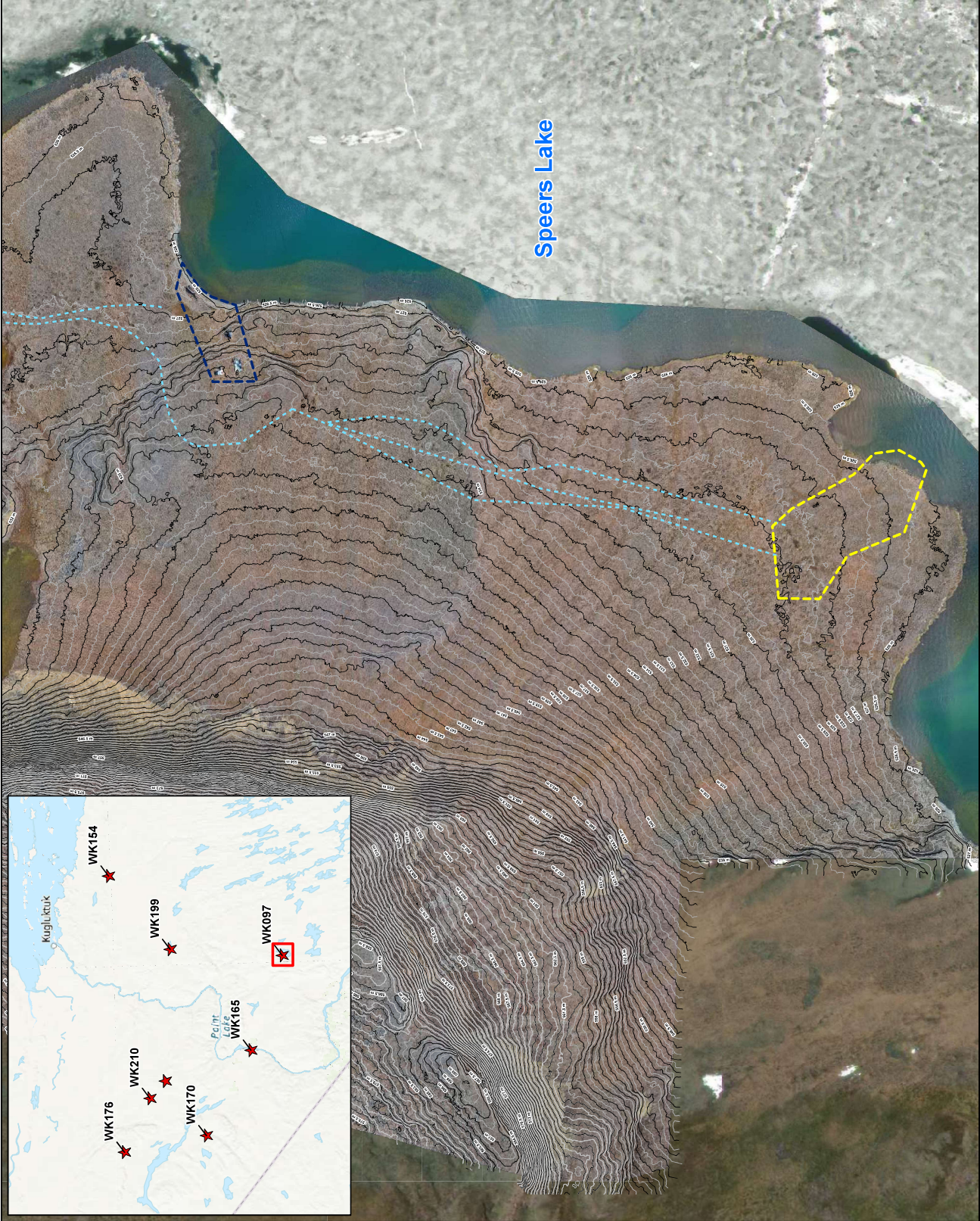


FIGURES

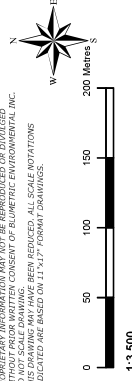


LEGEND

- North Site Outline
- South Site Outline
- Intermediate Contour (0.5 m)
- Major Contour (1 m)
- Approximate CAT Train Trail
- Site Locations

REV.	DESCRIPTION	YY/MM/DD	BY	CHK
1				

REFERENCES
 PROPRIETARY INFORMATION MAY NOT BE REPRODUCED OR DIVULGED WITHOUT THE EXPRESS WRITTEN CONSENT OF BLUMETRIC ENVIRONMENTAL, INC. THIS DRAWING MAY HAVE BEEN REVISED. ALL SCALE NOTATIONS INDICATED ARE BASED ON A 1:10,000 PLAN SCALE.



CLIENT
 Public Services and Procurement Canada

PROJECT
 Environmental Impact Assessment
 Speers Lake Sites Kitikmeot Region, Nunavut

TITLE
 Speers Lake (WK097)
 Site Location

BLM-KEL-60
 A Kitikmeot JV Corporation
 BluMetric • KBL • Accutech
 306 Mitik Street Cambridge Bay, NU X0B 0C0

PROJECT #	DATE
230468	February 24, 2025

DRAWN	CHECKED	FIG. NO.	REV
PB	SA	02	0

LEGEND

- South Site Outline
- Debris
- Barrel
- Barrel Cache
- Former Structure

REV.	DESCRIPTION	YY/MM/DD	BY	CHK
1				

REFERENCES
 PROPRIETARY INFORMATION MAY NOT BE REPRODUCED OR DIVULGED WITHOUT THE EXPRESS WRITTEN CONSENT OF BLUMETRIC ENVIRONMENTAL INC.
 THIS DRAWING MAY HAVE BEEN REVISED. ALL SCALE NOTATIONS INDICATED ARE BASED ON A 1:1000 DRAWING.

1:750

CLIENT
 Public Services and Procurement Canada

PROJECT
 Environmental Impact Assessment
 Speers Lake Sites Kitikmeot Region, Nunavut

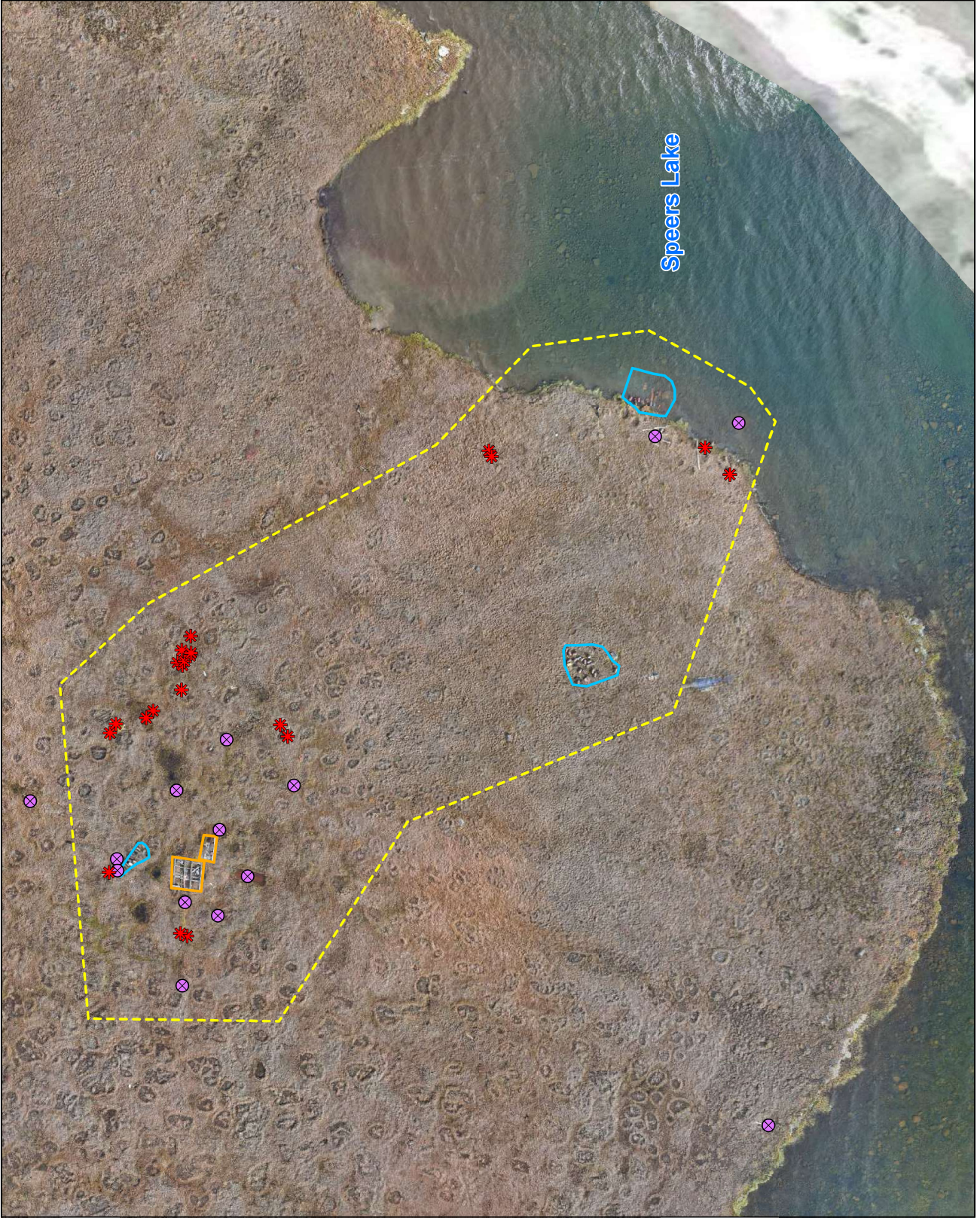
TITLE
 Speers Lake (WK097)
 South Site Features

BLM-KEL-60
 A Kitikmeot JV Corporation
 BluMetric • KBL • Accutech

306 Mitik Street Cambridge Bay, NU X0B 0C0


PROJECT #	DATE
230468	February 24, 2025

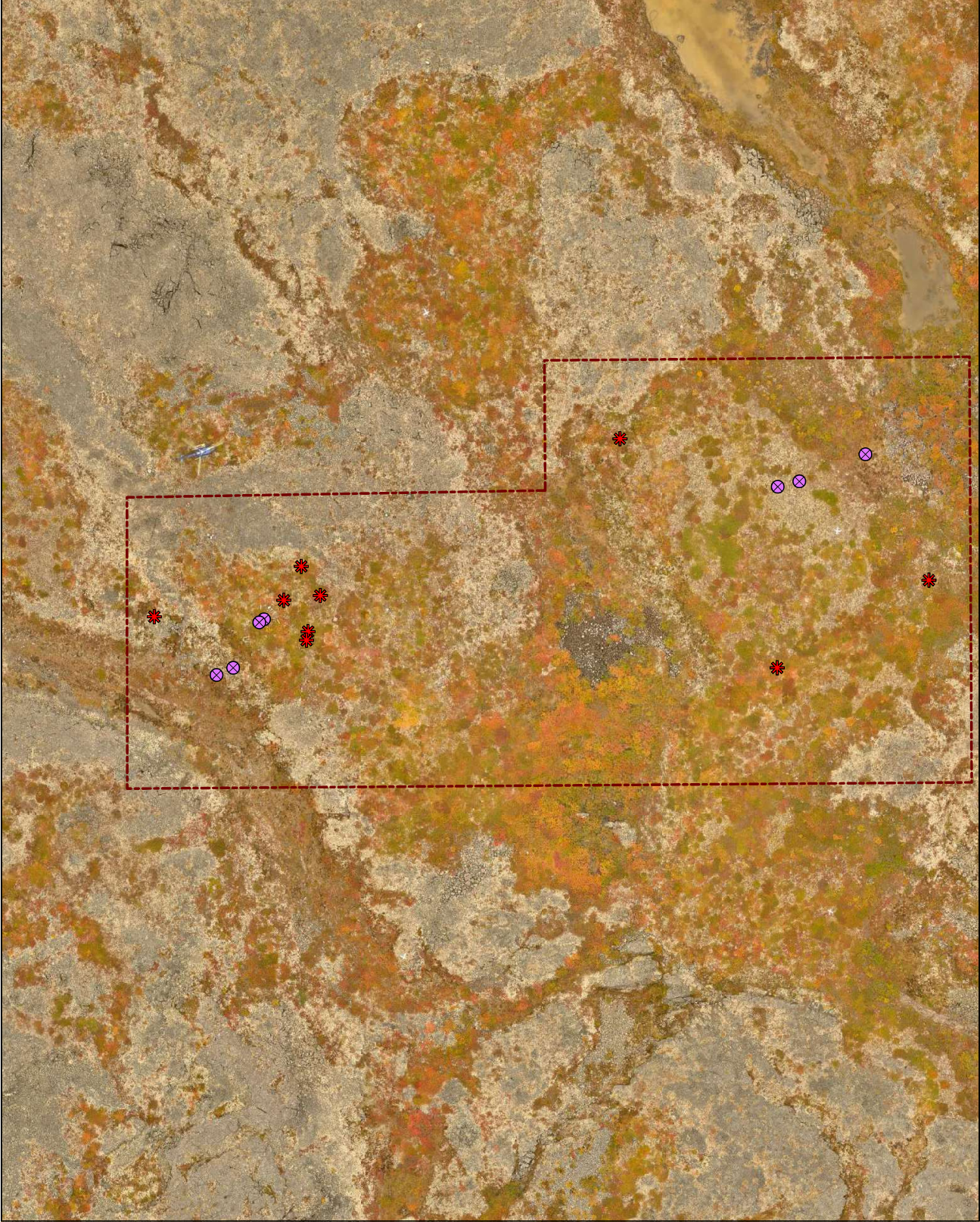
DRAWN	CHECKED	FIG NO.	REV
PB	SA	04	0



LEGEND

Site Boundary (approximate)

-  Site Boundary (approximate)
-  Debris
-  Barrel



REV.	DESCRIPTION	YY/MM/DD	BY	CHK
1				

REFERENCES
 PROPRIETARY INFORMATION MAY NOT BE REPRODUCED OR DIVULGED
 WITHOUT THE WRITTEN CONSENT OF BLUMETRIC ENVIRONMENTAL INC.
 THIS DRAWING MAY HAVE BEEN REVISED. ALL SCALE NOTATIONS
 INDICATED ARE BASED ON A 1:4000 SCALE DRAWING.



CLIENT
Public Services and Procurement Canada

PROJECT
**Environmental Impact Assessment
 Speers Lake Sites Kitikmeot Region, Nunavut**

TITLE
**Asiak River Site (WK154)
 Site Features**



BLM-KEL-60
 A Kitikmeot JV Corporation
 BluMetric • KBL • Accutech

306 Mitik Street Cambridge Bay, NU X0B 0C0









PROJECT #	DATE
230468	February 24, 2025

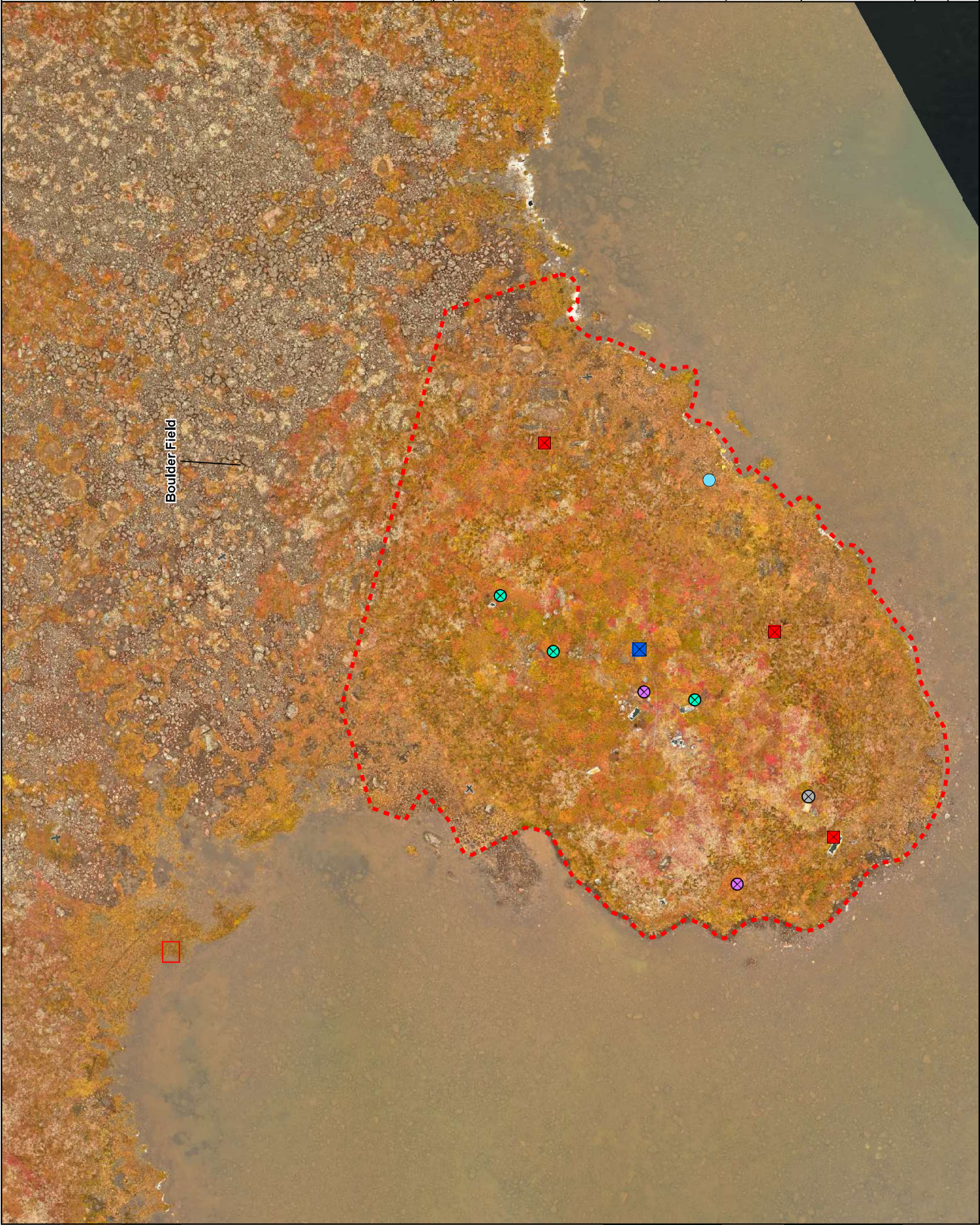
DRAWN	CHECKED	FIG. NO.	REV.
PB	SA	05	0

LEGEND

Site Area (Approximate)

Site Features

-  Debris
-  Barrel
-  Concrete Pad
-  Burn Pit
-  Machinery
-  Drill Core
-  Tank
-  Inuit Owned Land



REV.	DESCRIPTION	YY/MM/DD	BY	CHK
1				

PROPRIETARY INFORMATION MAY NOT BE REPRODUCED OR DIVULGED WITHOUT THE EXPRESS WRITTEN CONSENT OF BLUMETRIC ENVIRONMENTAL INC. THIS DRAWING MAY HAVE BEEN REVISIONED. ALL SCALE NOTATIONS INDICATED ARE BASED ON 1:500 PERCENT DIMENSIONS.



CLIENT

Public Services and Procurement Canada

PROJECT

Environmental Impact Assessment
Speers Lake Sites Kitikmeot Region, Nunavut

TITLE

Coppermine Area Site (WK199)
Site Features



BLM-KEL-60

A Kitikmeot JV Corporation
BluMeiric • KBL • Accutech

306 Mitik Street Cambridge Bay, NU X0B 0C0

PROJECT #	DATE
230468	February 24, 2025

DRAWN	CHECKED	FIG NO.	REV
PB	SA	09	0

