





**LEGEND**

- Site Boundary (approximate)
- Soil Sample Location
- Vegetation Sample Location
- Historical Sample Location (Golder 2005)**
- Historical Sample Soil Sample
- Debris Areas
- RPA guide

REV.	DESCRIPTION	YY/MM/DD	BY	CHK
1				

**REFERENCES**

PREPARED INFORMATION MAY NOT BE REPRODUCED OR DIVULGED WITHOUT THE WRITTEN CONSENT OF BLUMERIC ENVIRONMENTAL INC. THIS DRAWING MAY HAVE BEEN REPRODUCED. ALL SCALE NOTATIONS INDICATED ARE BASED ON A 1:1000 DRAWING.

**CLIENT**

Public Services and Procurement Canada

**PROJECT**

Environmental Impact Assessment  
Speers Lake Sites Kitikmeot Region, Nunavut

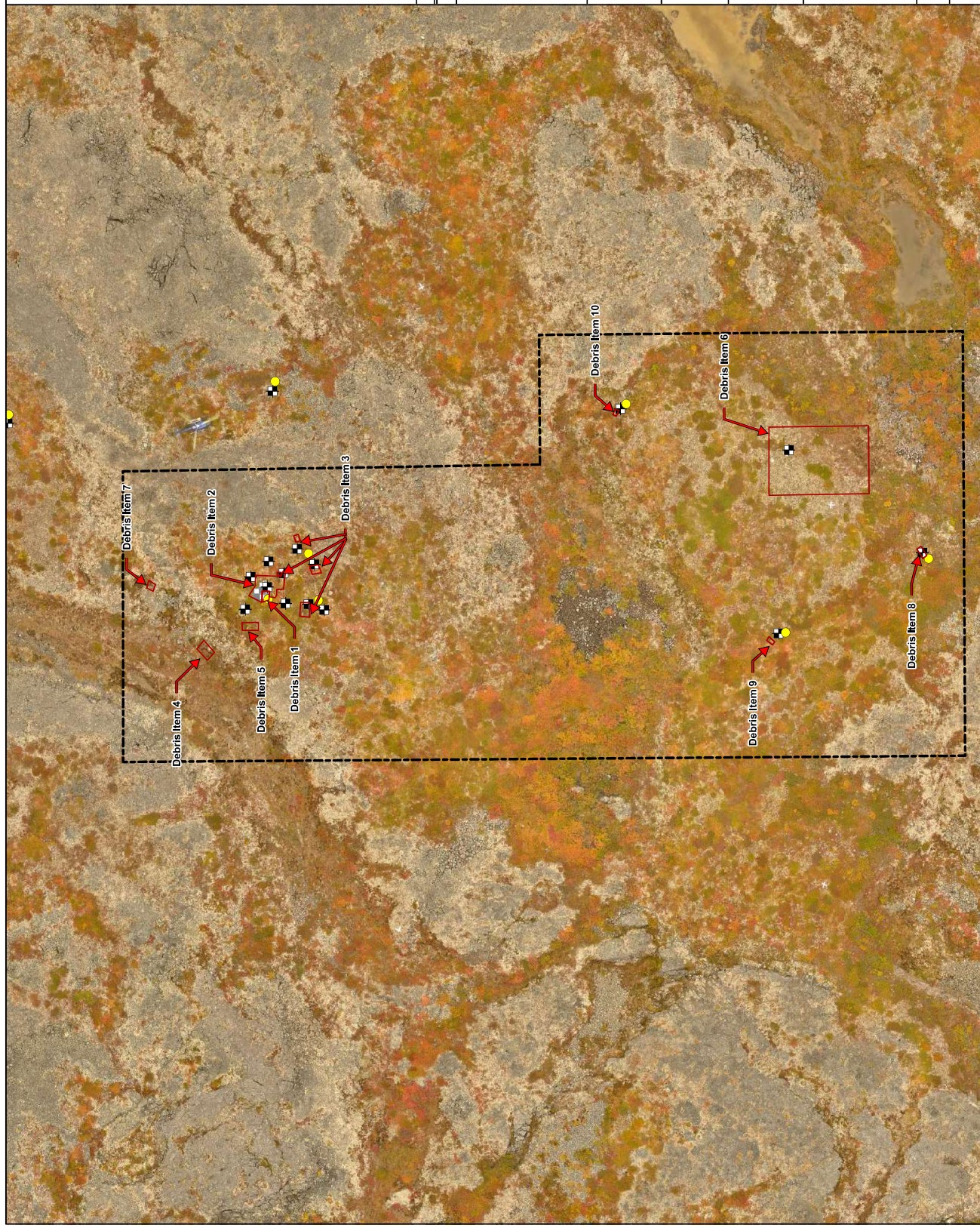
**TITLE**

Asiak River Site (WK154)  
Hazardous and Non-Hazardous Materials  
Inventory Results

**BLM-KEL-60**  
A Kitikmeot JV Corporation  
BluMeiric • KBL • Accutech

306 Mitik Street Cambridge Bay, NU X0B 0C0

<b>PROJECT #</b>	<b>DATE</b>
230468	February 24, 2025
<b>DRAWN</b>	<b>CHECKED</b>
PB	SA
<b>FIG NO.</b>	<b>REV</b>
13	0



**LEGEND**

**Areas of Concern / Areas of Potential Environmental Concern**

- Site Area (Approximate)
- Debris Area
- Soil Sample Location
- Historical Soil Sample Location
- Vegetation Sample Location
- Fuel Sample Location
- Paint Sample Location
- RPA Guide

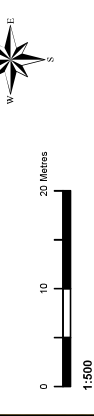
**Areas of Concern / Areas of Potential Environmental Concern**

- AEC 1 - Jerry Can Storage Area
- AEC 2 - Burn Pit
- APEC 3 - Debris Area 1
- APEC 4 - Debris Area 2

**NOTES:**  
Debris Items are described in the Debris Inventory (Table E-1) provided in Appendix E of the accompanying report

REV.	DESCRIPTION	YY/MM/DD	BY /CHK
1			

**REFERENCES**  
PROPRIETARY INFORMATION MAY NOT BE REPRODUCED OR DIVULGED WITHOUT THE WRITTEN CONSENT OF BLUMETRIC ENVIRONMENTAL INC. THIS DRAWING MAY HAVE BEEN REVISED. ALL SCALE NOTATIONS INDICATED ARE BASED ON A 1:500 SCALE DRAWING.



**CLIENT**  
Public Services and Procurement Canada

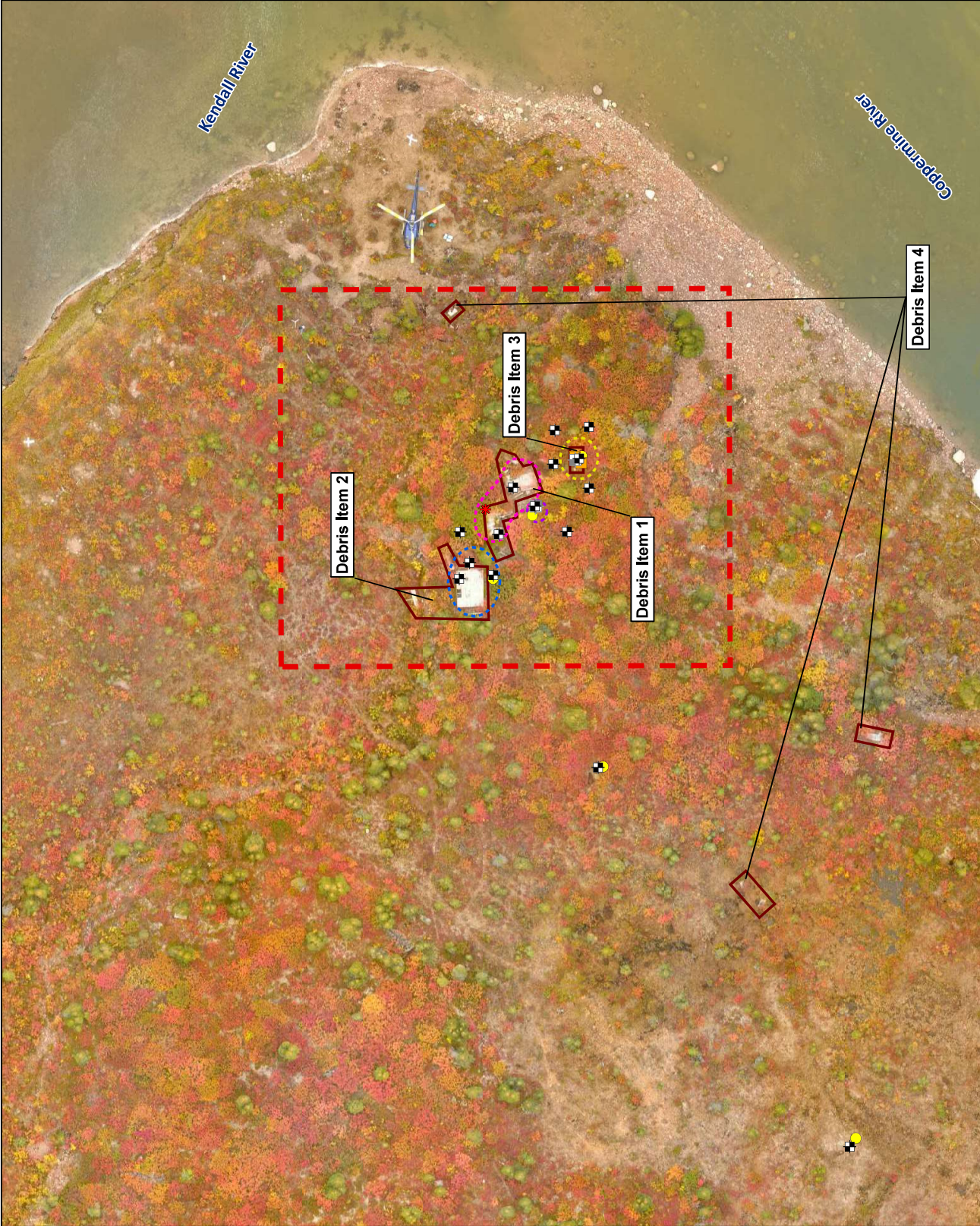
**PROJECT**  
Environmental Impact Assessment  
Speers Lake Sites Kitikmeot Region, Nunavut

**TITLE**  
Kendall River Site (WK165)  
Hazardous and Non-Hazardous Materials  
Inventory Results

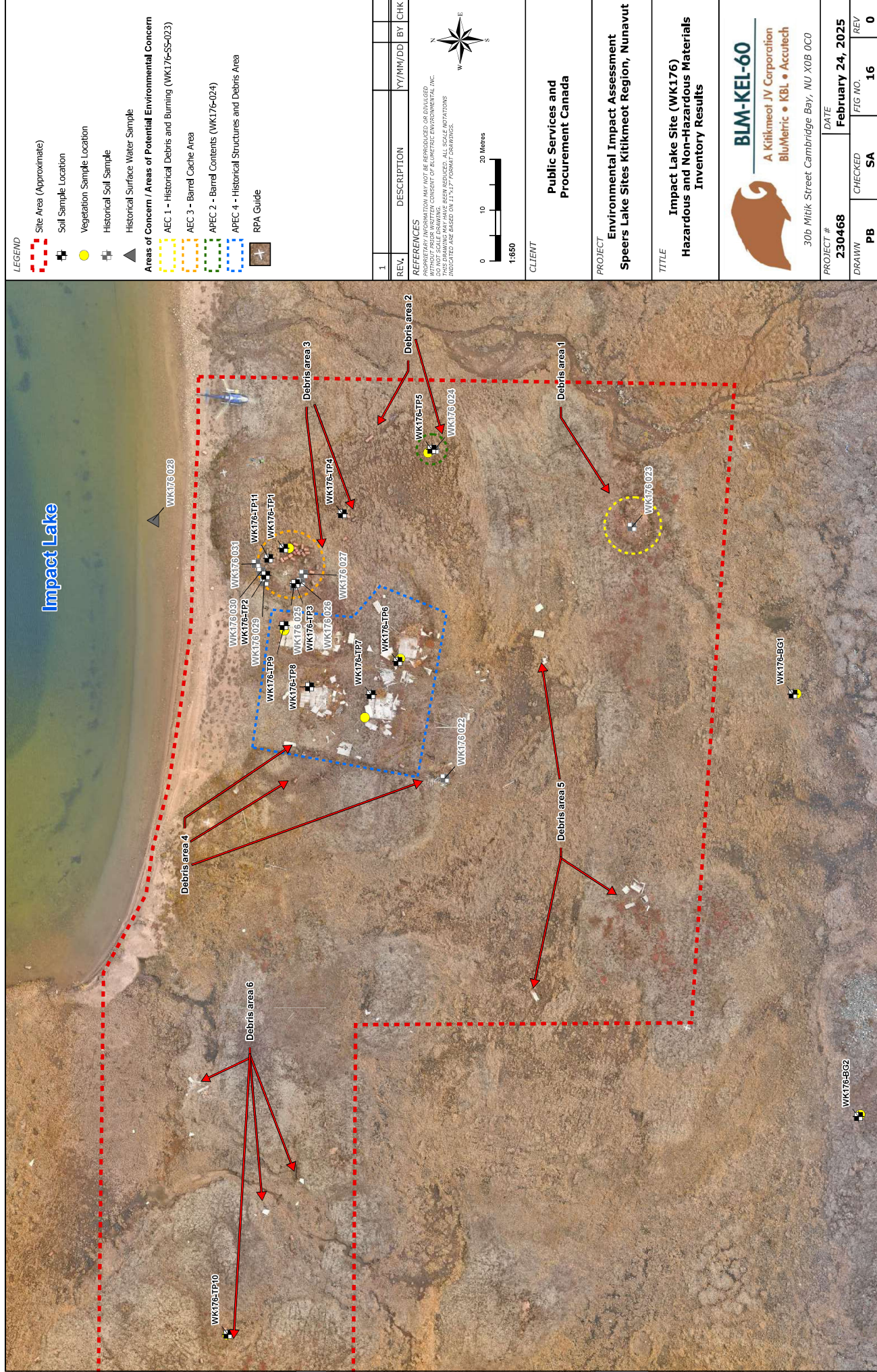
**BLM-KEL-60**  
A Kitikmeot JV Corporation  
BluMetric • KBL • Accutech

306 Mitik Street Cambridge Bay, NU X0B 0C0

<b>PROJECT #</b>	<b>DATE</b>
230468	February 24, 2025
<b>DRAWN</b>	<b>CHECKED</b>
PB	SA
<b>FIG NO.</b>	<b>REV</b>
14	0


















**LEGEND**

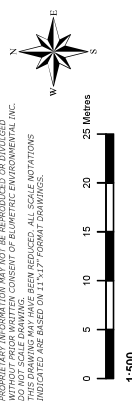
-  North Site Outline
-  Debris
-  Barrel
-  Lead Batteries
-  Barrel Cache
-  Former Structure
-  Proposed Camp Area



Speers Lake

REV.	DESCRIPTION	YY/MM/DD	BY	CHK
1				

**REFERENCES**  
 PROPRIETARY INFORMATION MAY NOT BE REPRODUCED OR DIVULGED WITHOUT THE WRITTEN CONSENT OF BLUMETRIC ENVIRONMENTAL INC. THIS DRAWING MAY HAVE BEEN REPRODUCED, ALL SCALE NOTATIONS INDICATED ARE BASED ON A 1:500 SCALE DRAWING.



**CLIENT**  
 Public Services and Procurement Canada

**PROJECT**  
 Environmental Impact Assessment  
 Speers Lake Sites Kitikmeot Region, Nunavut

**TITLE**  
 Speers Lake (WK097)  
 North Area Site Features



**BLM-KEL-60**  
 A Kitikmeot JV Corporation  
 BluMetric • KBL • Accutech

306 Mitik Street Cambridge Bay, NU X0B 0C0

PROJECT #	DATE
230468	February 24, 2025

DRAWN	CHECKED	FIG NO.	REV
PB	SA	19	0



