

RTS113 - WTS 40 GPM, TRAILER



APPLICATION:

- Water Treatment Applications (8-40 GPM)
 - Groundwater extraction/treatment applications
 - Surface and waste water treatment applications
 - Hydrocarbon contaminated water treatment applications

EQUIPMENT SUMMARY:

- Groundwater inlet port
- Alternative inlet progressive cavity suction pump
- Welded steel oil water separator w/ product storage drum
- Bag filter
- Wide availability of filtration media, TM100 clay, Carbon, Alumina, etc.

CONSTRUCTION:

- Installed in a 8' x 12' cargo trailer
- Process piping is galvanized steel fittings and PVC hose and fittings.
- Programmable Logic Controller (PLC)
- Remote access and control via cellular wireless telemetry (Optional)

PROCESS SPECIFICATIONS

- Rated Water Process Flow: Up to 40 GPM
- Rated Pressure and Flow for Water Treatment System: 40 GPM @ 30 PSIG
- Approximate Weight: 7,000 lbs
- Approximate Exterior Dimensions: 8' x 12' (Not including hitch)
- Acceptable Ambient Temperature: - 40 to + 35 deg C
- Third Party Approvals: UL and ESA System and Panel Approved

POWER SPECIFICATIONS

- Power Requirements: 43 Amps @ 208V 3 Ph
- Service Required: 70 Amps @ 208V 3 Ph
- Main Disconnect by: **newterra**
- Area Classification of Process Equipment: Class 1 Div 2 Group D
- Area Classification of Control Panel: General Purpose, Outdoors
- Telephone Line Requirements: None - Optional wireless telemetry available

STANDARD FEATURES:

- Explosion proof heater, lighting, ventilation fan
- Corrosion prevention anode installed in Oil Water Separator
- 55 Gallon product storage drum
- All air phase and liquid phase media, bag filters, and OWS media is purchased at time of the order
- Automated PLC control system for independent operation

OPTIONAL ITEMS:

- Remote cellular access system with data-logging functions
- Additional transmitters and other process instrumentation
- Submersible pumps
- Pneumatic well pumps and air compressor
- Generator for power supply at remote locations
- Ontario Certificate of Approval (C of A) for discharge to storm sewer, surface watercourse or surface of the ground

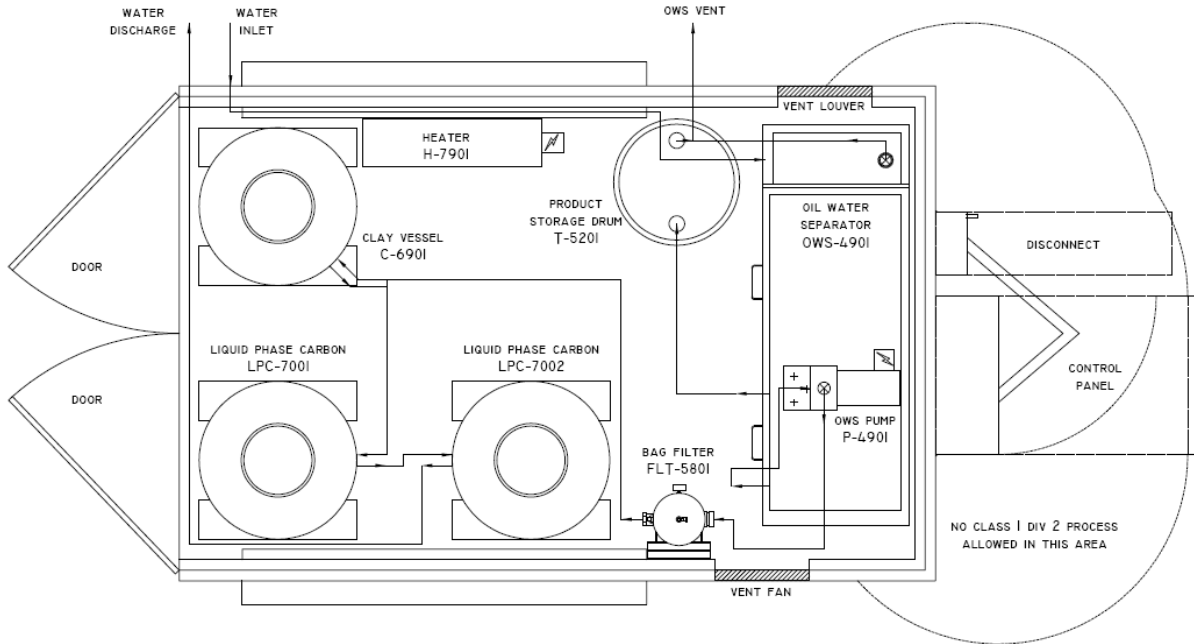




newterra™
smart technology. sustainable solutions.™

LAYOUT:

RTS113 - WTS 40 GPM, TRAILER



PERFORMANCE DATA:

