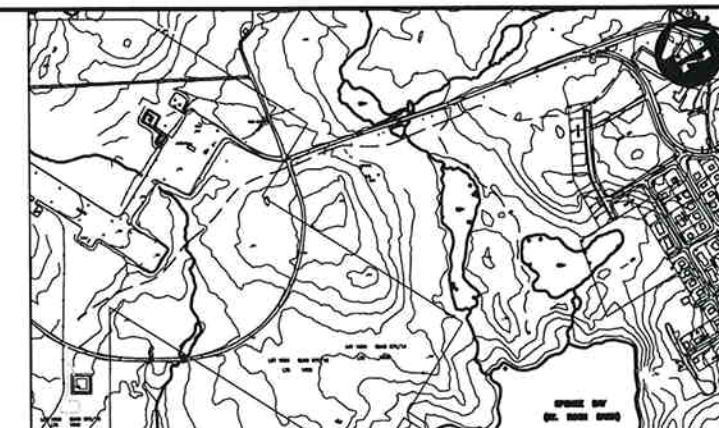


LAND FARM PLAN
1:100

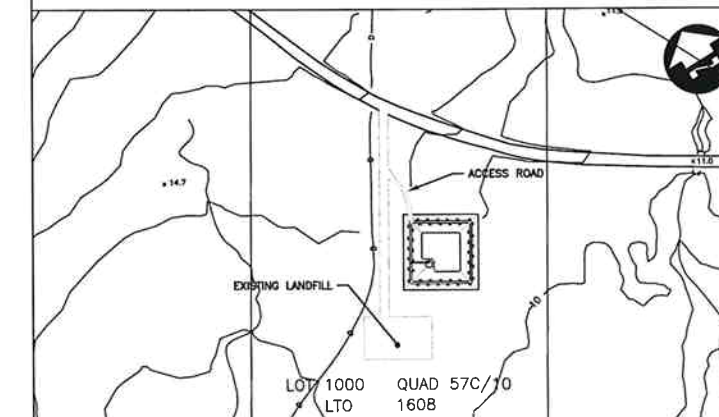
THE ASSOCIATION OF
PROFESSIONAL ENGINEERS,
GEOLOGISTS and GEOPHYSICISTS
OF THE NORTHWEST TERRITORIES
PERMIT NUMBER
P 010
M. M. DILLON
LIMITED



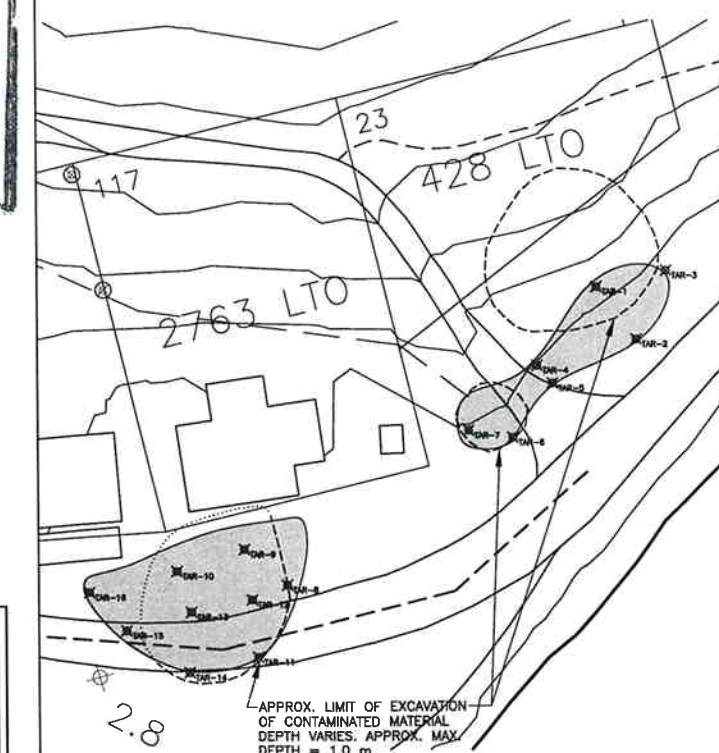
This record drawing has been prepared based in part upon information furnished by others. Dillon Consulting Limited cannot assure the accuracy of others' information and thus is not responsible for the accuracy of this record drawing or for any error or omission that may have been incorporated into it as a result. Those relying on this drawing are advised to obtain independent verification of its accuracy before applying it for any purpose.



OVERALL SITE PLAN
SCALE 1:7500

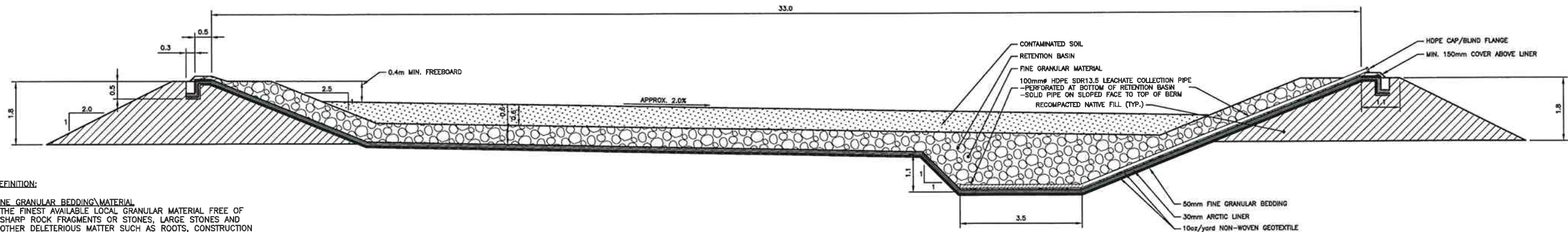


LANDFARM LOCATION
SCALE 1:2000



EXCAVATION DETAIL - RESUPPLY AREA
1:400

..... DILLON CONSULTING LTD. DATE			<div><div>RECORD DRAWING</div><div><div>APPROVED BY</div><div>DATE</div></div></div>	<p>NOTE: LOCATION OF STRUCTURES AND COMPONENTS ARE BASED IN PART BY INFORMATION PROVIDED BY OTHERS. NO GUARANTEE IS GIVEN THAT ALL STRUCTURES ARE SHOWN OR THAT THE GIVEN LOCATIONS ARE EXACT. CONFIRMATION OF EXISTENCE AND LOCATION OF ALL ITEMS MUST BE CONFIRMED BY THE CONTRACTOR.</p>	 <div>DILLON CONSULTING</div>					DESIGN	BMP	GOVERNMENT OF NUNAVUT TALOYOAK PPD REMEDIATION	FILE NO.	02-0456
										DRAWN	EDT		SITE PLANS	DRAWING NO.
				CHECKED	MTB									
				APPROVED										
	1	RECORD DRAWING	12/18/02	GS	DATE	06/17/02								
	NO.	REVISIONS	DATE	BY	SCALE	AS SHOWN								



DEFINITION:

FINE GRANULAR BEDDING MATERIAL

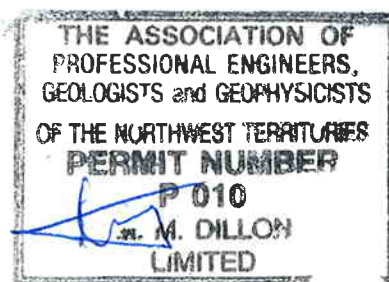
THE FINEST AVAILABLE LOCAL GRANULAR MATERIAL FREE OF SHARP ROCK FRAGMENTS OR STONES, LARGE STONES AND OTHER DELETERIOUS MATTER SUCH AS ROOTS, CONSTRUCTION DEBRIS AND METALLIC OBJECTS AT THE DISCRETION OF THE SITE ENGINEER.

LANDFARM SECTION 1

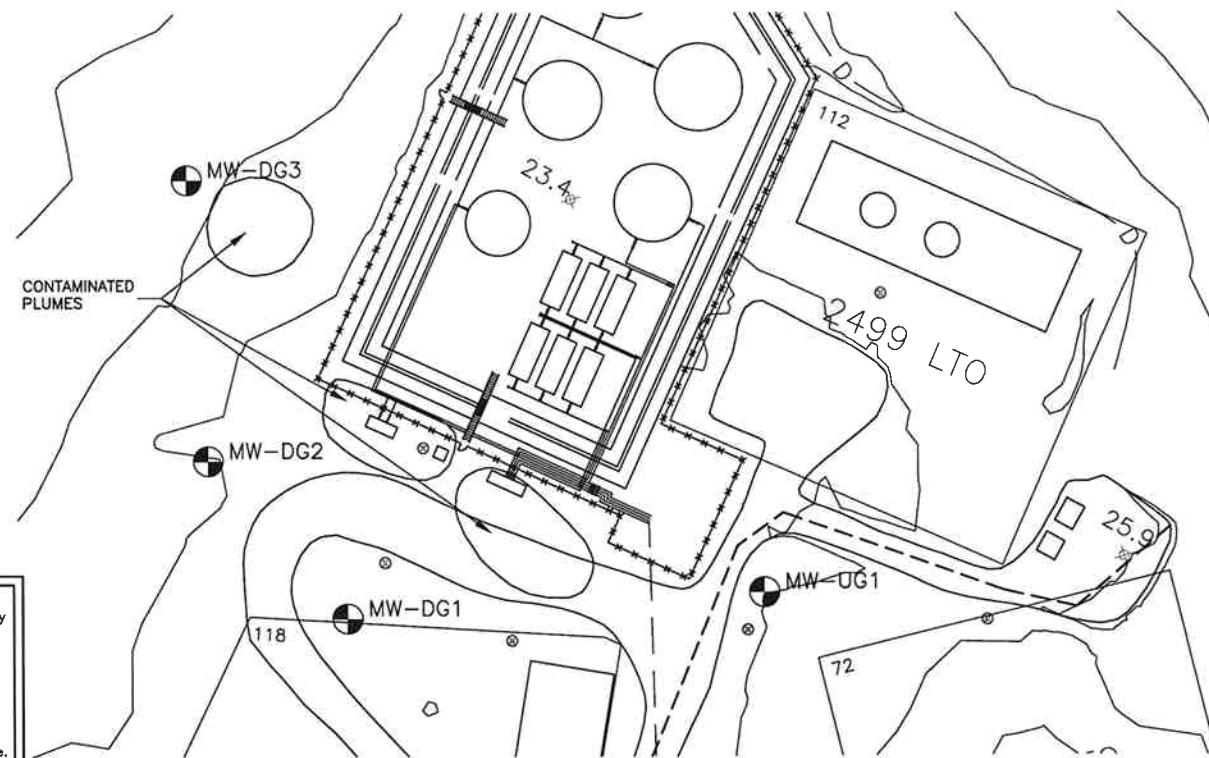
1:60

NOTES:

- FINE GRANULAR BEDDING AND EMBANKMENT (RECOMPACTED NATIVE FILL) SHALL BE COMPACTED TO 95% OF PROCTOR DENSITY AT THE DISCRETION OF THE SITE ENGINEER.
- CONTAMINATED SOILS FROM RESUPPLY AREA WILL BE EXCAVATED AND HAULED ALONG DESIGNATED ROUTE AND DEPOSITED AT THE SOIL REMEDIATION FACILITY LOCATED TO THE SOUTHEAST OF THE PPD TANK FARM.
- APPROXIMATE VOLUME OF THE EXCAVATION IS 780m³. THE EXCAVATION IS APPROX. 1.0m DEEP.
- SCOPE OF WORK FOR SOIL REMEDIATION PROJECT:**
 - EXCAVATE SOILS AT RESUPPLY AREA AS INDICATED. CONSULTANT IN FIELD WILL DETERMINE THE CHARACTER OF MATERIALS. MATERIALS DESIGNATED AS CONTAMINATED ARE TO BE HAULED TO THE SOIL REMEDIATION FACILITY. MATERIALS DESIGNATED AS UNCONTAMINATED ARE TO BE STOCKPILED ON SITE.
 - MATERIALS HAULED TO FACILITY ARE TO BE DISTRIBUTED IN TREATMENT CELL TO A MAXIMUM THICKNESS OF 200mm.
 - CONTAMINATED SOILS TO BE REMEDIATED BY PERIODIC TILLAGE AS PER SPECIFICATIONS. CONTAMINATED SOILS MUST BE MAINTAINED AT OPTIMUM MOISTURE CONTENT AS DIRECTED BY CONSULTANT.
 - TO MAINTAIN THE CONTAMINATED SOILS AT OPTIMUM MOISTURE CONTENT, WATER COLLECTED FROM THE LEACHATE COLLECTION SYSTEM IS TO BE SPRAYED IN THE CELL. EXCESS WATER IS TO BE PUMPED FROM THE LEACHATE COLLECTION SYSTEM AND DEPOSITED AT A LOCATION DIRECTED BY THE CONSULTANT IN ACCORDANCE WITH THE GENERAL REQUIREMENTS SECTION OF THE SPECIFICATION.
 - EXCAVATIONS AT THE RESUPPLY AREA TO BE BACK FILLED AFTER ALL CONTAMINATED MATERIALS HAVE BEEN REMOVED AND CERTIFIED "CLEAN" BY CONSULTANT ON SITE.
 - FOLLOWING SUCCESSFUL REMEDIATION OF ALL CONTAMINATED SOILS, ALL REMEDIATED SOILS FROM TREATMENT CELLS ARE TO BE HAULED AND SPREAD IN A LOCATION SPECIFIED BY THE CONSULTANT ON SITE.
 - FOLLOWING REMOVAL OF CONTAMINATED SOILS FROM TREATMENT FACILITY, DECOMMISSION SOIL REMEDIATION FACILITY AND RESTORE ALL CONSTRUCTION AND OPERATION AREAS TO CONDITION EQUAL TO OR BETTER THAN WHICH EXISTED PRIOR TO CONSTRUCTION.
- PROVIDE SHORING AND BRACING TO REQUIREMENTS OF NUNAVUT SAFETY ACT TO ALLOW ACCESS BY WORKERS; TO PROTECT EXISTING INFRASTRUCTURE; OR WHERE REQUIRED BY LAW.
- SEE SPECIFICATION FOR FURTHER DETAILS AND INSTRUCTIONS.



This record drawing has been prepared based in part upon information furnished by others. Dillon Consulting Limited cannot assume the accuracy of others' information and thus is not responsible for the accuracy of this record drawing or for any error or omission that may have been incorporated into it as a result. Those relying on this drawing are advised to obtain independent verification of its accuracy before applying it for any purpose.



TANK FARM MONITORING WELLS

1:600

<p>DILLON CONSULTING LTD.</p> <p>DATE</p>		<p>RECORD DRAWING</p> <p>APPROVED BY: <i>[Signature]</i> DATE: <i>[Date]</i></p> <p>NOTE: LOCATION OF STRUCTURES AND COMPONENTS ARE BASED IN PART BY INFORMATION PROVIDED BY OTHERS. NO GUARANTEE IS GIVEN THAT ALL STRUCTURES ARE SHOWN OR THAT THE GIVEN LOCATIONS ARE EXACT. CONFIRMATION OF EXISTENCE AND LOCATION OF ALL ITEMS MUST BE CONFIRMED BY THE CONTRACTOR.</p> <p>DILLON CONSULTING</p>	<p>DESIGN: BMP</p> <p>DRAWN: EDT</p> <p>CHECKED: MTB</p> <p>APPROVED:</p>	<p>1 RECORD DRAWING 12/16/02 GS DATE 06/17/02 SCALE AS SHOWN</p>	<p>GOVERNMENT OF NUNAVUT TALOYOAK PPD REMEDIATION</p> <p>MONITORING WELLPLAN AND LANDFARM SECTION</p>	<p>FILE NO. 02-0456</p> <p>DRAWING NO. T2</p>
---	--	--	---	--	---	---