

**Application for a variance under  
the Caribou Protection Measures**

**27 April 2007**

Maze Lake Project  
Kivalliq District, Nunavut

Prepared by:  
Patrick Lengyel, P. Geo  
Consulting Geologist to Terrane Metals Corp.

The Maze Lake project is located on ground where the Caribou Protection Measures apply. For the first two years of the project, field work has been carried only between July 16 and the fall season. For 2007, 3000m of drilling are planned which should take 2 months to complete between mid-July to mid-September. In order to better defined our drill targets some mapping, rock sampling, soil sampling and ground geophysical surveys have to be completed beforehand. As proposed in our 2007 Work Plan, we would like to have access to the project's site and carry some work between July 1 and July 15 when the Caribou Protection Measures are in force.

The status of the fuel cache near the camp in the south end of the property is going to be evaluated to verify if it can be used for helicopter use. If so, our activity during the exclusion period will be limited to re-establishing the existing camp. If it is no longer suitable for helicopter use, and we have to fly in new fuel, we will consider establishing a camp at the north end closer to the main work area. If the work is limited to re-establishment of the camp, the activity will be very localized and consist of flying in camp materials to one site. If the work requires bringing in new fuel and a new camp it will be in the north end far away from known Caribou migration.

**Table 1: Summary of the activities planned to be carried during the exclusion period**

Caribou Protection Measures Period												
Activity	May				June				July			
	1	2	3	4	1	2	3	4	1	2	3	4
Freight hauling by ground												
Freight hauling by air												
Camp building/opening												
Geological mapping												
Soil sampling												
Ground geophysical survey												

## **Activities Description and Mitigation Measures:**

### **1- Equipment hauling- by air**

Date: July 1 to July 15

Description: Hauling of camp equipment, fuel drums and drill equipment using helicopter and fixed-wing aircrafts to existing camp at south end of property (Figure 1 – “CAMP”).

Protection: At least three different airstrips are available in the Maze Lake area so landing location can be selected to avoid areas where caribous are present. If avoidance is impossible, hauling would be suspended.

### **2- Camp opening/building**

Date: July 1 to July 15

Description: Setting up new tents, new sumps and latrine pits, getting camp ready for summer at south end of property (Figure 1 – “CAMP”). If existing fuel cache quality has expired for helicopter use and new fuel must be brought in, a new camp and fuel cache may be established in the north end of the property (Figure 1 – “POTENTIAL NEW CAMP” and “POTENTIAL NORTHERN FUEL CACHE”).

Protection: Camp opening will proceed only if caribou cows are not present close to the camp site. If cows and calves or migrating caribous were to come close to camp area after opening, noisy activities would be suspended and personnel movement limited to the immediate vicinity of camp. No all-terrain vehicles will be present on site.

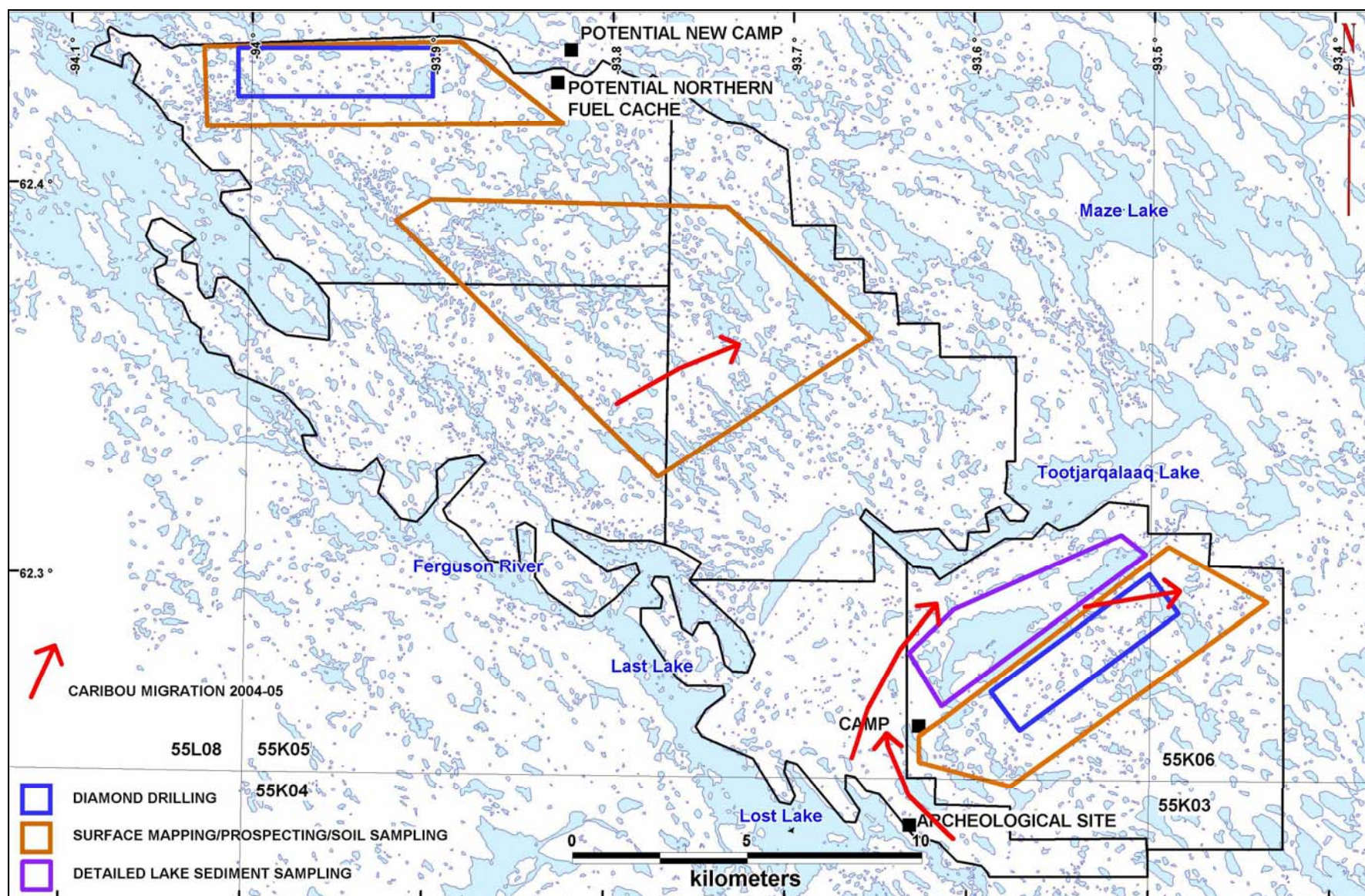


Figure 1 - Known Caribou Migration 2003-05