

COMINCO LTD. GLOBAL EXPLORATION EMERGENCY SPILL RESPONSE

A) MATERIALS TO BE USED FOR SPILL CONTROL

Matasorb (as sheets, rolls, tiger tails)

This is a melt blown polypropylene product designed specifically for soaking up diesel, gasoline and other hydrocarbon products, as well as a wide range of other liquids.

Plug 'n Dyke

This is a non-toxic material which forms an immediate sea to control flammable and hazardous leaks from containers.

These materials will be stored at the camp and at fuel caches

B) CATEGORIES/RESPONSE

1. Leaking drum:

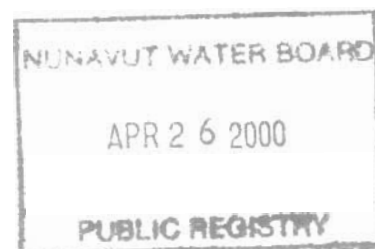
- Seal with Plug 'n Dyke if appropriate
- Pump out fluid either into non-leaking empty drum or into salvage drum
- Clean up ground with Matasorb
- Dispose of waste material to Resolute or burn

2. Localized spill of diesel fuel/gasoline:

- Clean up area with Matasorb
- Dispose of waste material as above

C) DISPOSAL OF WASTE MATERIAL AND WASTE FLUIDS

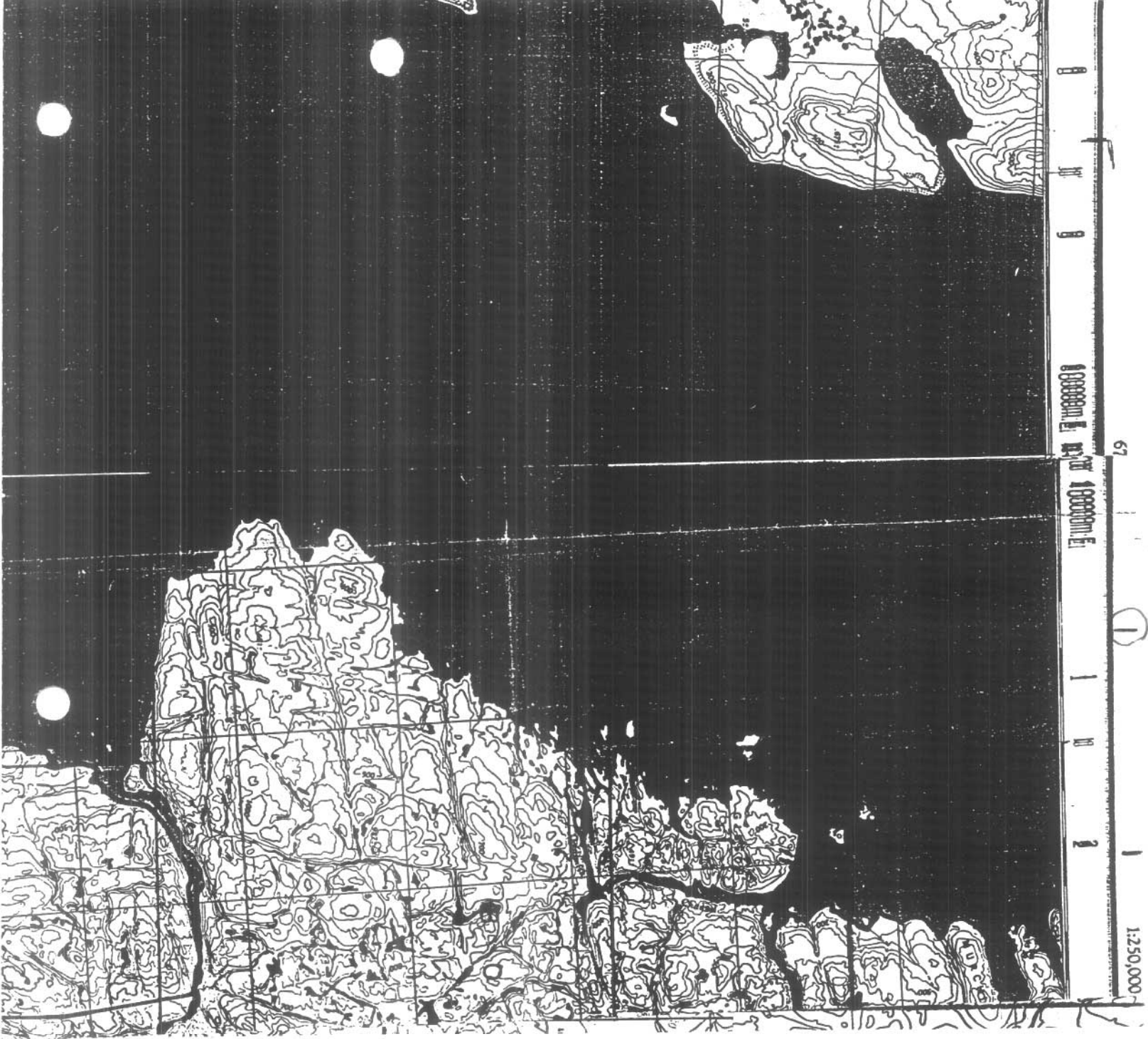
Contaminated Matasorb material and waste fluids will be transported back to Resolute for incineration.



EMERGENCY SPILL RESPONSE PLAN

1. Identify nature and source of spill-fuel drums, fuel tank etc.
2. Take immediate action to contro the spill at source- shut off engine, seal with Plug 'n Dyke etc
3. Notify on-site supervising geologist.
4. Open up spill response kit and use appropriate method to clean up spilled material.
5. On-site supervising geologist will go to the spill site and ensure appropriate and complete clean-up of spilled material.
6. Dispose of waste material.
7. Each spill is to be documented by the on-site supervising geologist.

Jeffrey H. Heidema
Geologist, Land Administration



000000m E
000000m E
000000m E

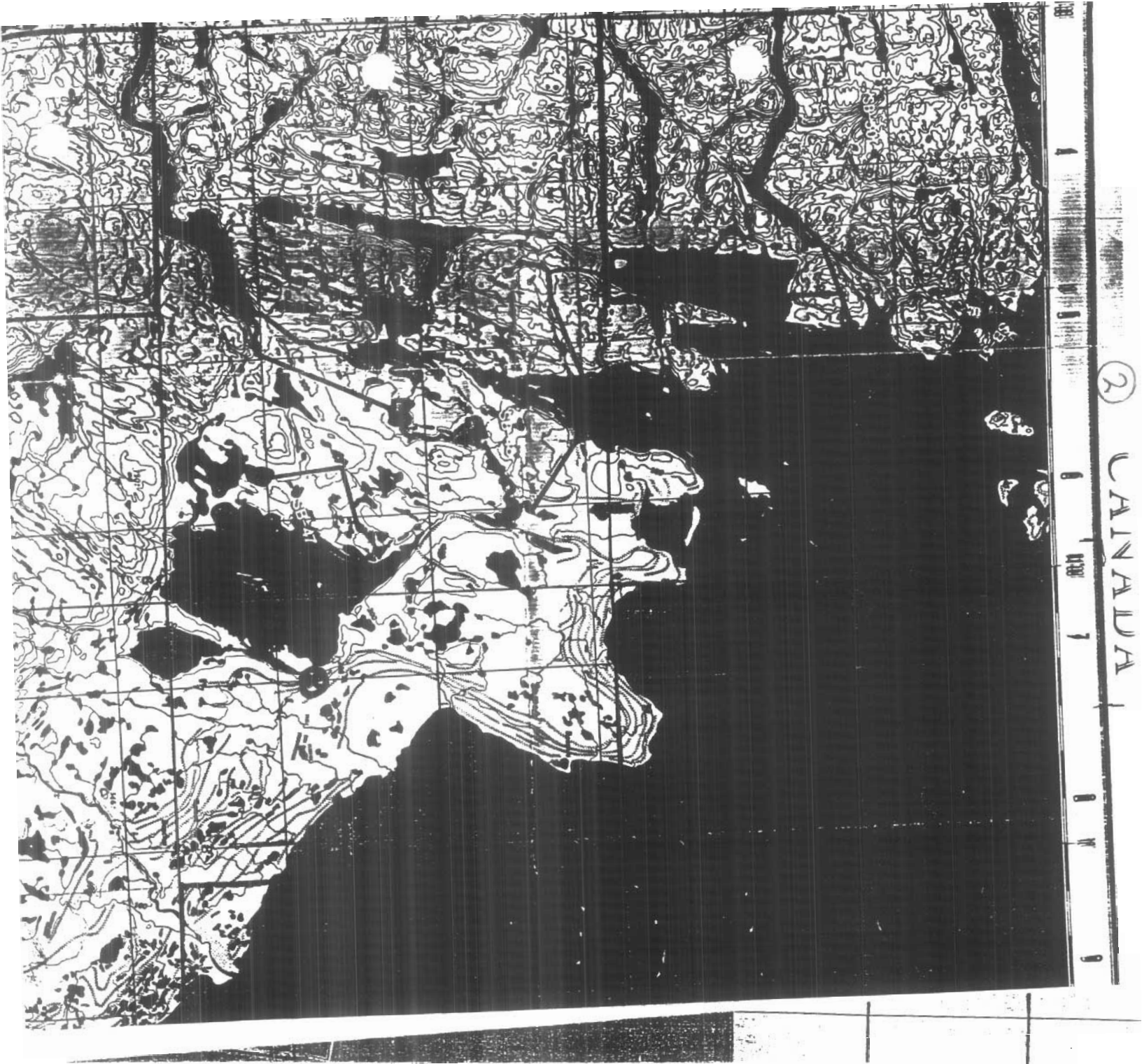
67

①

1:250,000

2

CANADA



11 100'

1

10'

2

530000m E.

W 100'

N'w nnnnn Rk/

7

6

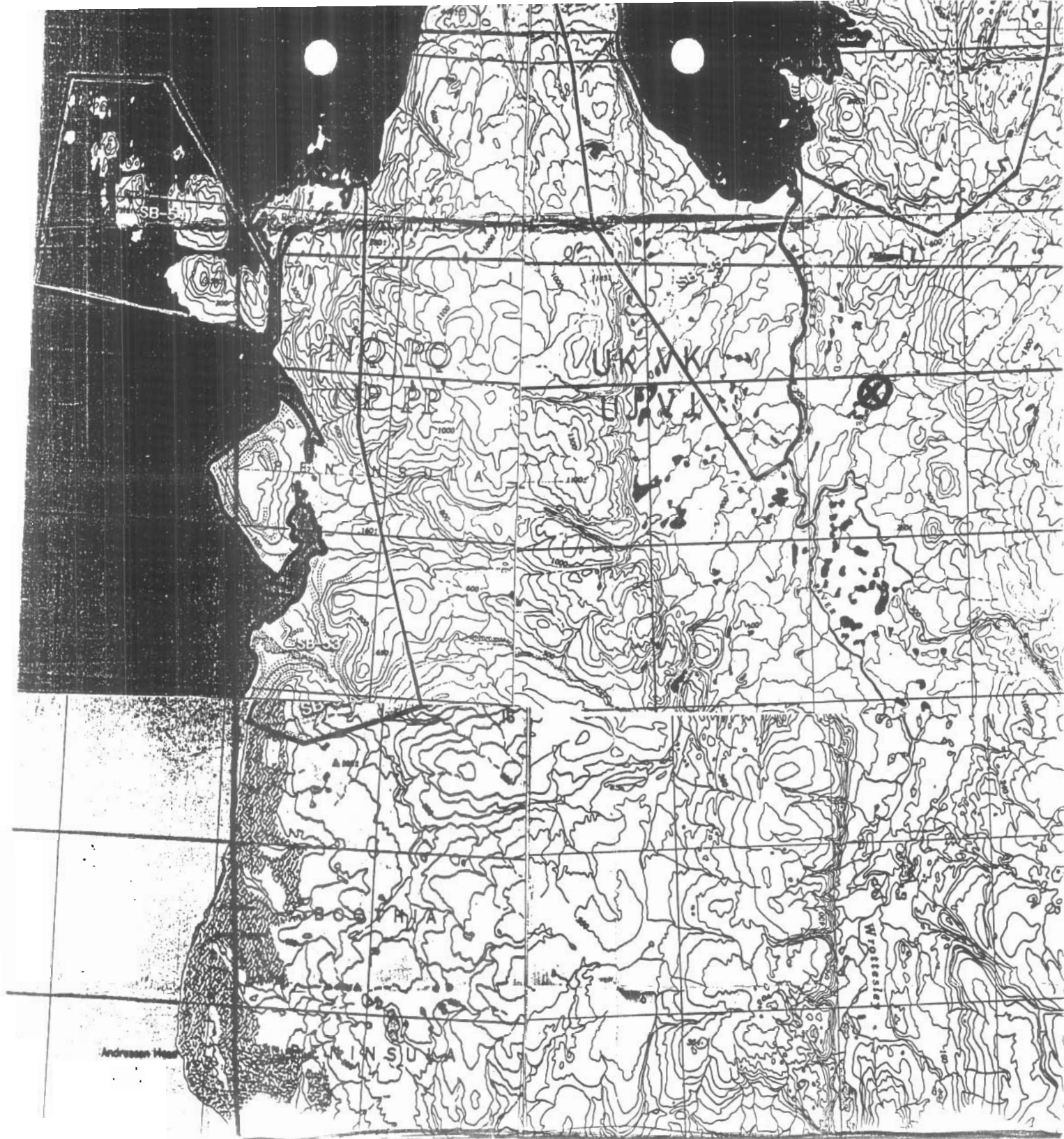
5

4

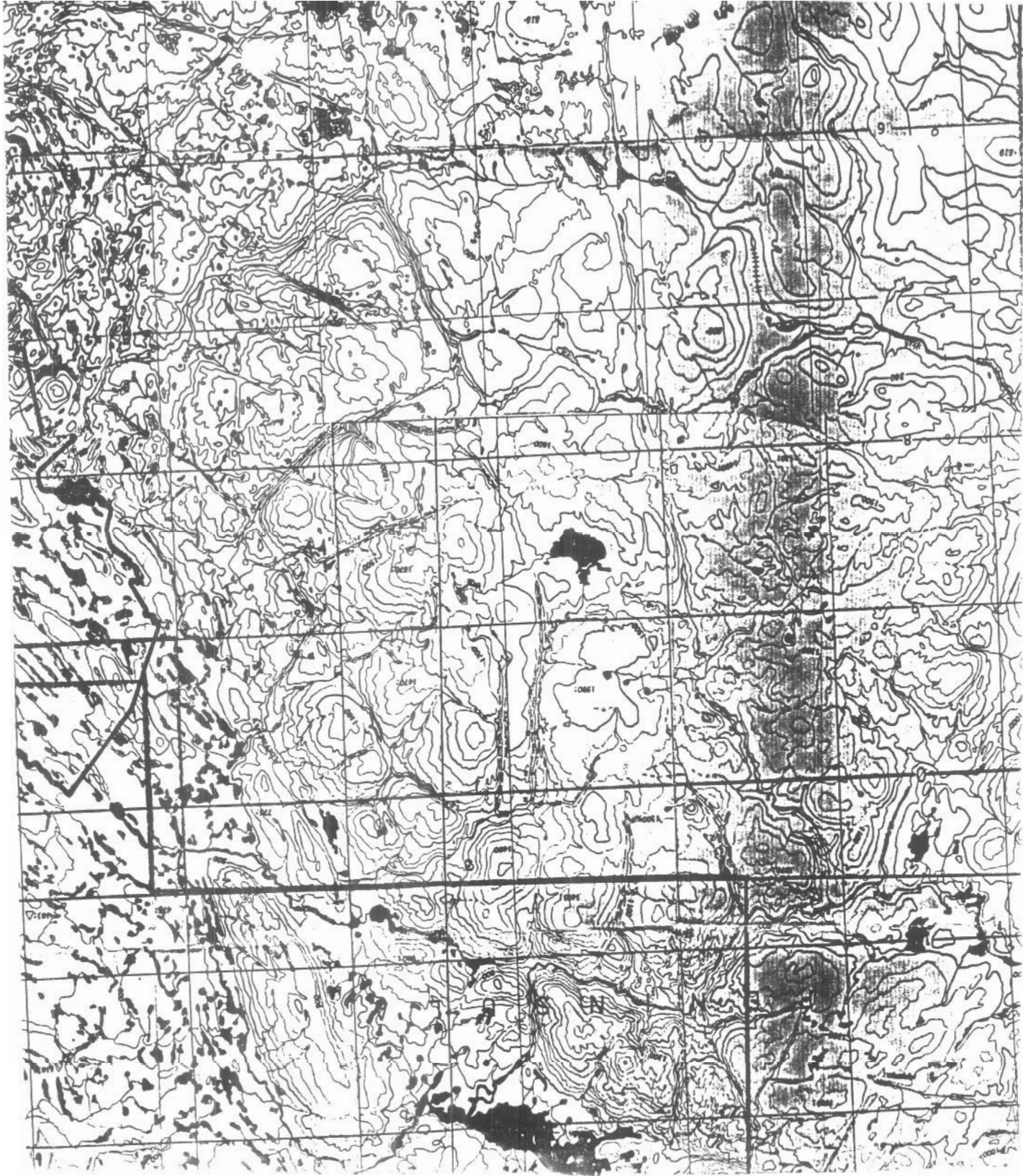
3

⊗
-CAMO + MAIN
FUEL CACHE





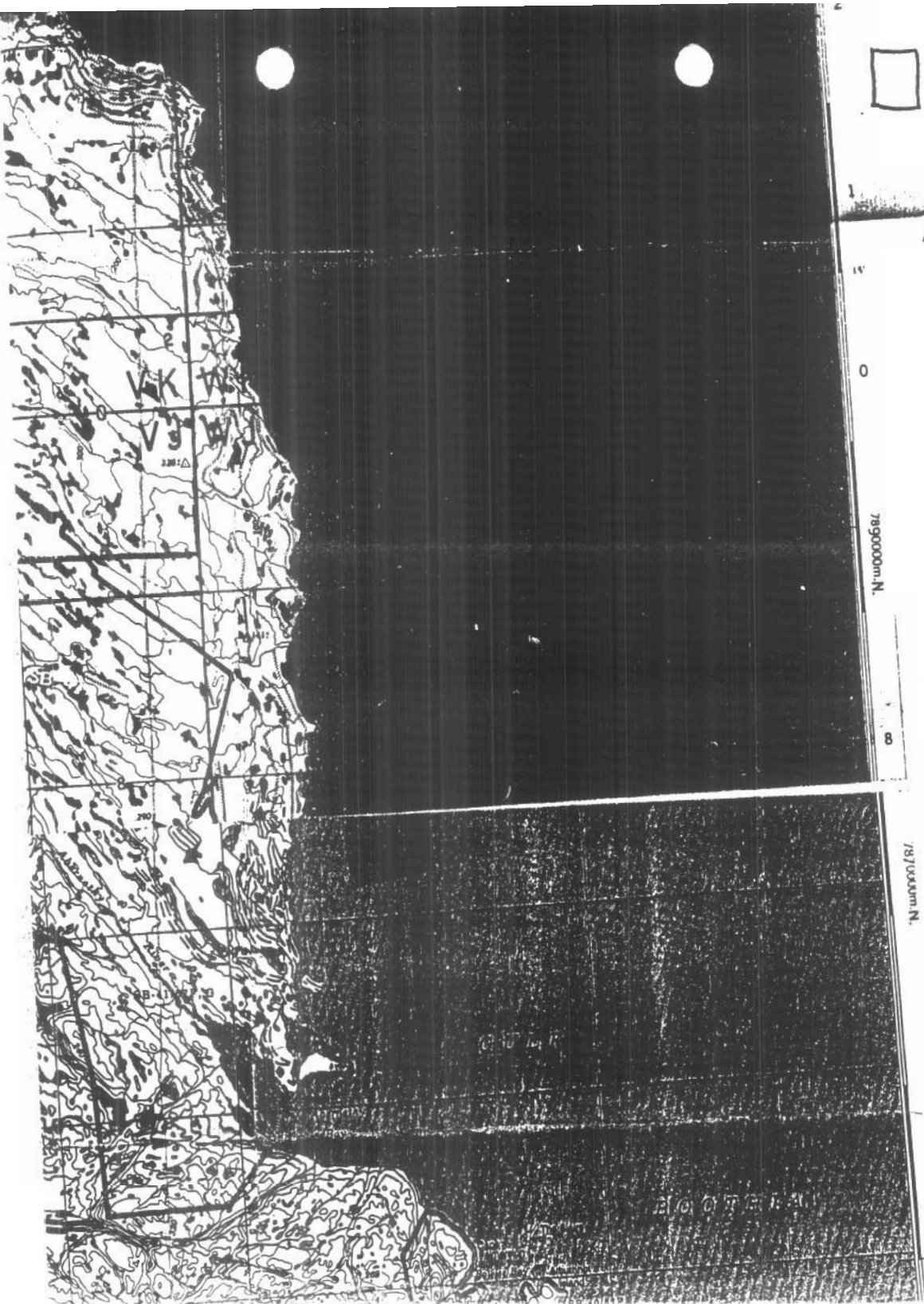
4



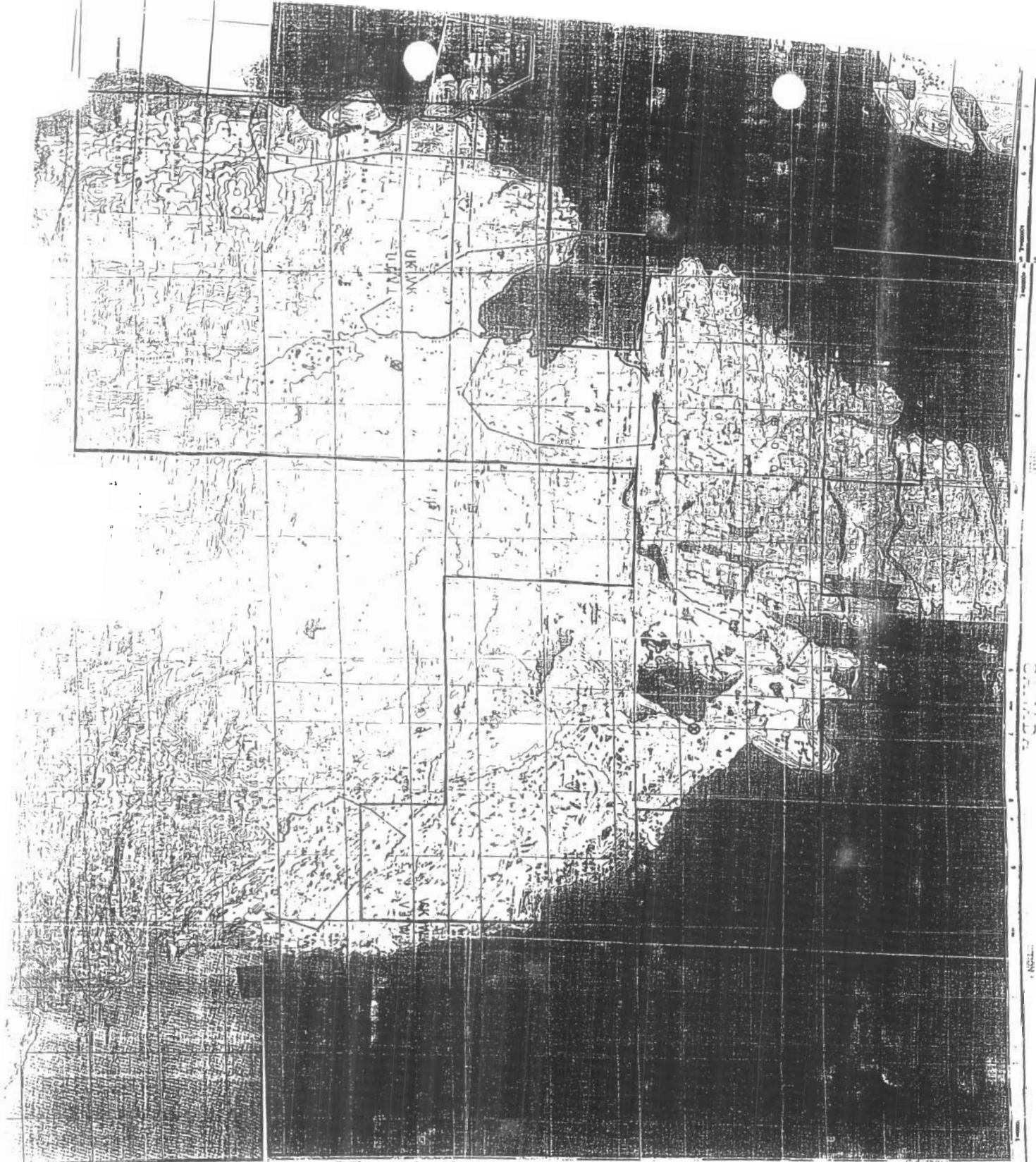
5

□ - PROPERTY
BOUNDARY

SCALE
1:250,000



6



⊗ CAMP & TRAIL
⊗ FUEL CACHE
□ PRIMITIVE
STATION

SCALE
1:250,000