

KUGAARUK, NU
ACCESS TRAIL TO FOL SITE, KM 10
ALIARUHIK RIVER FIRST BRIDGE
CROSSING

Construction 2000/2001

**KUGAARUK, NU. ACCESS TRAIL TO FOL SITE, KM 10
ALIARUHIK RIVER FIRST BRIDGE CROSSING.**



Elevation of First Bridge Crossing. Bridge span 60 m



View of timber deck towards east

**KUGAARUK, NU. ACCESS TRAIL TO FOL SITE, KM 10
ALIARUHIK RIVER FIRST BRIDGE CROSSING**



Local bridge crew assembling a binwall abutment



Local bridge crew assembling a binwall abutment

**KUGAARUK, NU. ACCESS TRAIL TO FOL SITE, KM 10
ALIARUHIK RIVER FIRST BRIDGE CROSSING**



Local crew member working on binwall assembly



Local bridge crew carrying 900 lb. Pre-assembled binwall panel

**KUGAARUK, NU. ACCESS TRAIL TO FOL SITE, KM 10
ALIARUHIK RIVER FIRST BRIDGE CROSSING.**



Concrete production plant, owned and operated by the local Koomiut Co-op produced the concrete for the bridge bearing seats.



Local crew placing concrete

**KUGAARUK, NU. ACCESS TRAIL TO FOL SITE, KM 10
ALIARUHIK RIVER FIRST BRIDGE CROSSING.**



Concrete bearing seat installed on top of the binwall abutment



Local crew placing concrete

**KUGAARUK, NU. ACCESS TRAIL TO FOL SITE, KM 10
ALIARUHIK RIVER FIRST BRIDGE CROSSING**



October 04, 2000. Elevation of completed east abutment



Elevation of completed west abutment

**KUGAARUK, NU. ACCESS TRAIL TO FOL SITE, KM 10
ALIARUHIK RIVER FIRST BRIDGE CROSSING.**



October 04, 2000. Upstream view of completed bridge approaches and abutments



Downstream view of completed bridge approaches and abutments

**KUGAARUK, NU. ACCESS TRAIL TO FOL SITE, KM 10
ALIARUHIK RIVER FIRST BRIDGE CROSSING.**

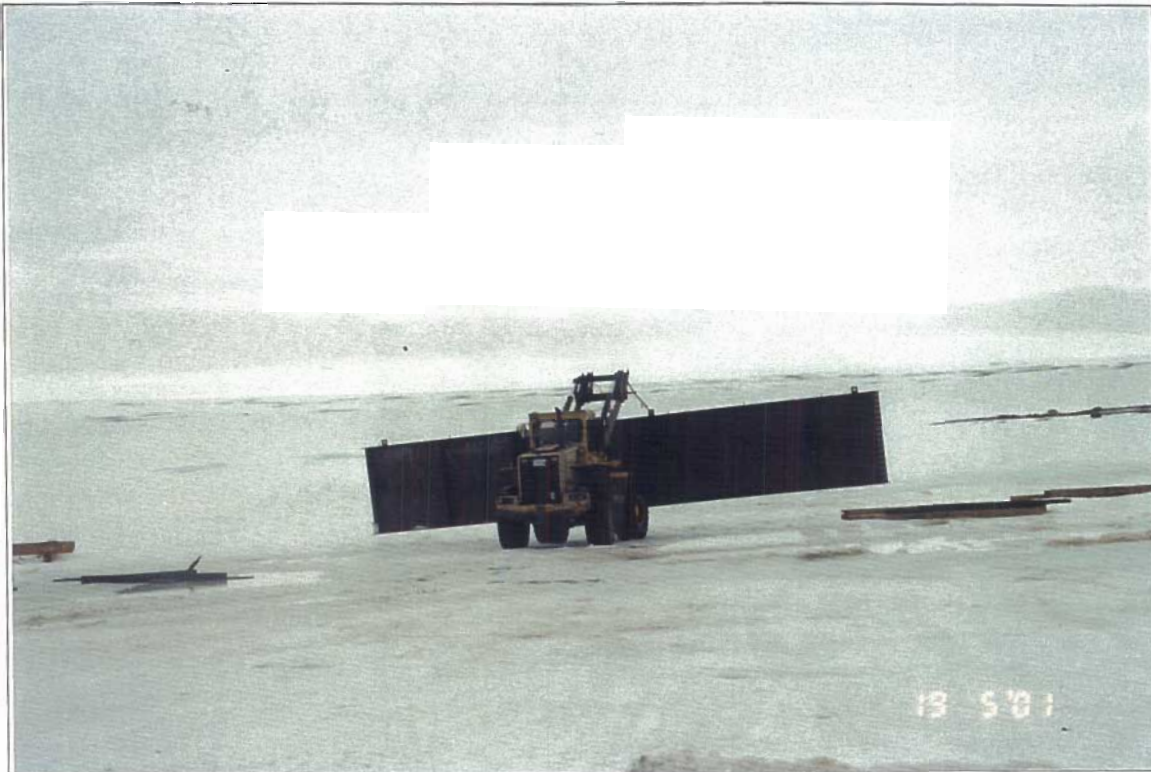


Local equipment transporting 12,000 lb. Bridge girder section



Temporary storage of the girders on the community staging area near the runway

**KUGAARUK, NU. ACCESS TRAIL TO FOL SITE, KM 10
ALIARUHIK RIVER FIRST BRIDGE CROSSING.**



Transportation of bridge girder using local loader.



Local crew working on girder splice.

**KUGAARUK, NU. ACCESS TRAIL TO FOL SITE, KM 10
ALIARUHIK RIVER FIRST BRIDGE CROSSING**



Transportation and assembly of bridge girders using local loader.



Transportation and assembly of bridge girders using local loader.

**KUGAARUK, NU. ACCESS TRAIL TO FOL SITE, KM 10
ALIARUHIK RIVER FIRST BRIDGE CROSSING**



Bridge crew member working on girder splice



Side view of partially installed bridge. A 3.5 m high and 20.0 m wide berm constructed of snow was used as working platform

**KUGAARUK, NU. ACCESS TRAIL TO FOL SITE, KM 10
ALIARUHIK RIVER FIRST BRIDGE CROSSING**



Bridge crew member installing floor beam



Bridge crew member working on girder splice.

**KUGAARUK, NU. ACCESS TRAIL TO FOL SITE, KM 10
ALIARUHIK RIVER FIRST BRIDGE CROSSING.**



Girder splice detail.



General view of construction site with partially installed bridge.

**KUGAARUK, NU. ACCESS TRAIL TO FOL SITE, KM 10
ALIARUHIK RIVER FIRST BRIDGE CROSSING.**



End view of installed bridge superstructure

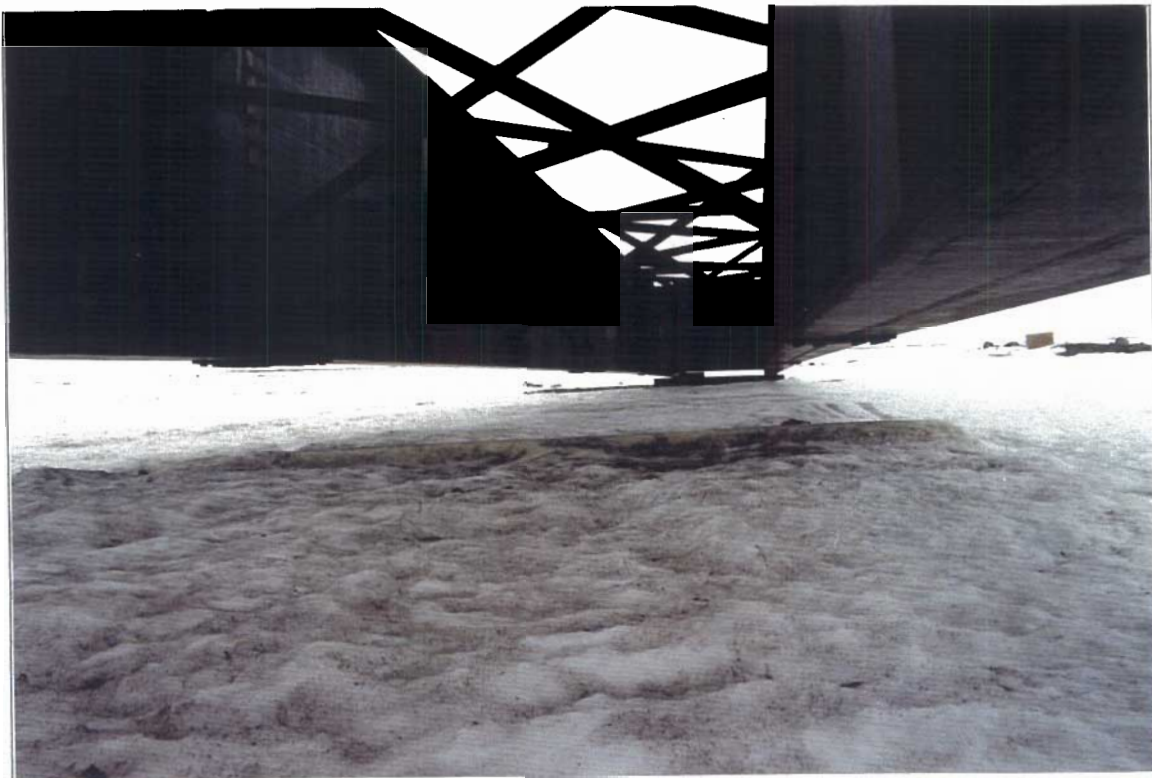


April 2001. Bridge girders installed on 3.5 m high snow berm.

**KUGAARUK, NU. ACCESS TRAIL TO FOL SITE, KM 10
ALIARUHIK RIVER FIRST BRIDGE CROSSING.**



60 m bridge superstructure. Top view.



Bridge superstructure underside. Snow berm built for the installation under the bridge.

**KUGAARUK, NU. ACCESS TRAIL TO FOL SITE, KM 10
ALIARUHIK RIVER FIRST BRIDGE CROSSING.**



Elevation of bridge girders installed on 3.5 m high snow berm



Removal of snow berm prior to spring break up.

**KUGAARUK, NU. ACCESS TRAIL TO FOL SITE, KM 10
ALIARUHIK RIVER FIRST BRIDGE CROSSING**



Local bridge crew working on deck installation



Local bridge crew working on deck installation

**KUGAARUK, NU. ACCESS TRAIL TO FOL SITE, KM 10
ALIARUHIK RIVER FIRST BRIDGE CROSSING.**



August 2001. Completion of bridge deck.



Bridge construction crew. In back plan – Back-binwall prior to backfill.

**KUGAARUK, NU. ACCESS TRAIL TO FOL SITE, KM 10
ALIARUHIK RIVER FIRST BRIDGE CROSSING.**



First vehicle travel on the bridge to deliver gravel for the east binwall backfill



Wild flowers in the vicinity of the bridge site